

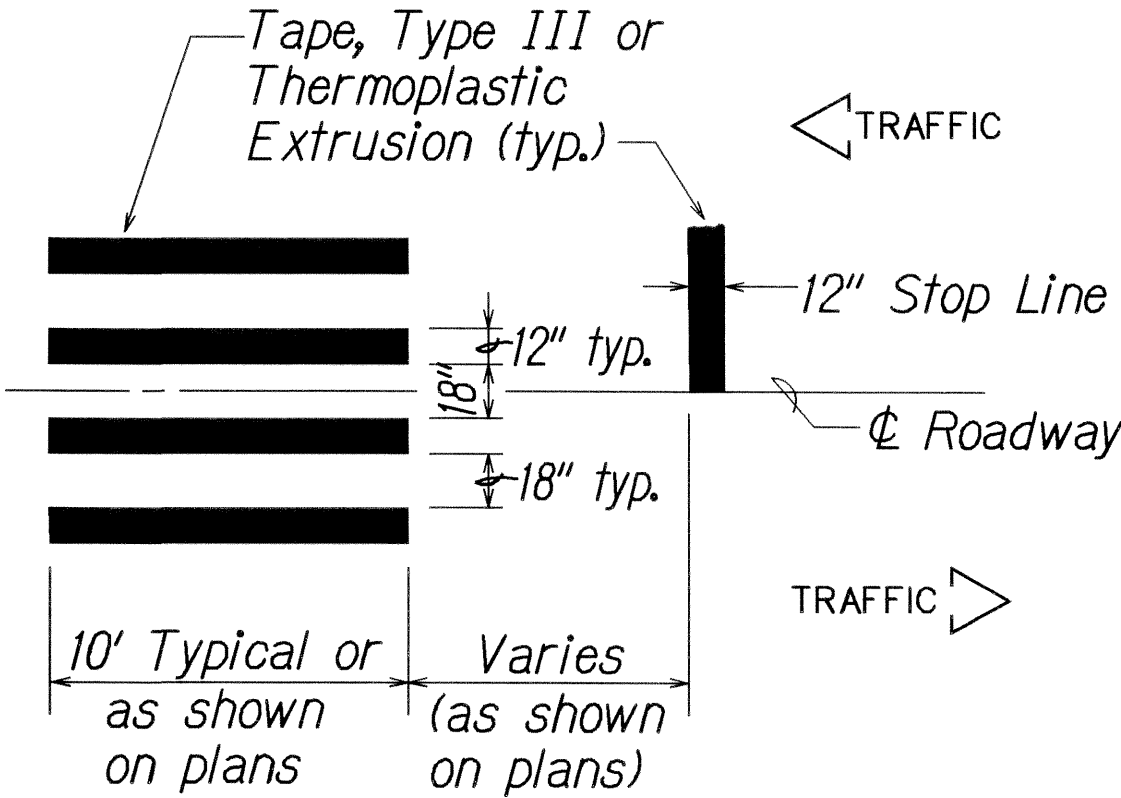
FED. ROAD DIST. NO.	STATE	PROJ. NO.	FISCAL YEAR	SHEET NO.	TOTAL SHEETS
HAWAII	HAW.	580A-01-07M	2007	12	17

LEGEND

	4 each Type A Raised Pavement Markers
	Type C Raised Pavement Markers @ 40'-0" o.c.
	4 each Type J Raised Pavement Markers
	Type D Raised Pavement Markers @ 40'-0" o.c.
	8" White Stripe with Type C Raised Pavement Markers @ 20'-0" o.c. (Tape, Type I or Thermoplastic Extrusion)
	4" Double Solid Yellow with Type D Raised Pavement Markers @ 20'-0" o.c. (Tape, Type I or Thermoplastic Extrusion)
	4" Double Solid Yellow Stripes with Type H Raised Pavement Markers @ 20'-0" o.c. (Tape, Type II or Thermoplastic Extrusion)
	4" Yellow Edge Stripe with Type H Raised Pavement Markers @ 40'-0" o.c. (Tape, Type II or Thermoplastic Extrusion)
	4" Double Solid White Stripes with Type C Raised Pavement Markers @ 20'-0" o.c. (Tape, Type I or Thermoplastic Extrusion)
	Lane Change Restriction Marking
	4 each Type A Raised Pavement Markers
	Type C Raised Pavement Markers @ 20'-0" o.c.
	4" White Stripe (Tape, Type I or Thermoplastic Extrusion)
	4" or 8" White Edge Stripe with Type C Raised Pavement Markers @ 40'-0" o.c. (Tape, Type II or Thermoplastic Extrusion)
	4" White Guide Lines (Tape, Type III or Thermoplastic Extrusion except for bus bays)
	Transverse Median Marking (Tape, Type II or Thermoplastic Extrusion)
	Transverse Shoulder Marking (Tape, Type II or Thermoplastic Extrusion)
	Channelizing Island or Deceleration Lane Gore (Tape, Type II or Thermoplastic Extrusion)
	Crosswalk and Stop Line. All Stop Lines shall be 10'-0" from Crosswalk unless otherwise noted. The circled number indicates the number of lanes for payment (Tape, Type III or Thermoplastic Extrusion)
	Pavement Arrow (Tape, Type III or Thermoplastic Extrusion)
	Pavement Word (Tape, Type III or Thermoplastic Extrusion)
	4 Each Type J Raised Pavement Markers
	Type D Raised Pavement Markers @ 40'-0" o.c.
	Type H Raised Pavement Markers (Reflective Surface facing no-passing direction)
	4" Single Solid Yellow Stripe (Tape, Type I or Thermoplastic Extrusion)
	Extension of Edge Line, 4" Wide x 2'-0" Long White Stripe @ 10'-0" o.c. w/Type C Markers @ 40'-0" o.c. (Tape, Type III or Thermoplastic Extrusion)

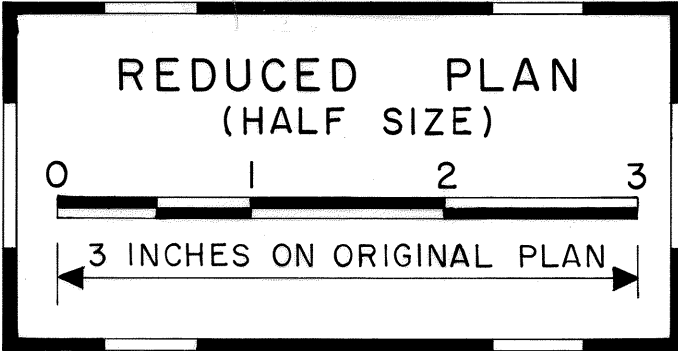
NOTES

- Layout of pavement markings and striping shall be done by the Contractor and approved by the Engineer prior to any installation work.
- Existing pavement markings not incorporated in the final traffic pattern shall be removed as directed by the Engineer. Costs shall be incidental to the various pavement marking items.
- Raised pavement markers shall not be installed within crosswalks.
- Final locations of all signs shall be approved by the Engineer prior to any installation work.
- Existing signs not shown on these plans shall remain as posted unless otherwise directed by the Engineer. Removal and disposal of existing signs and/or posts as designated on these plans shall be incidental to the various signing items.
- Final locations of all Stop Lines shall be approved by the Engineer prior to installation.
- All pavement striping shall be as noted on the legend or plans.
- All preformed pavement marking tapes over existing pavement shall be applied with an approved primer as recommended by the tape manufacturer and as approved by the Engineer. The primer shall be allowed to dry to the tacky stage prior to tape application.
- The Contractor shall erect at the beginning of the project and at the end of the project advance construction warning signs placed as indicated on the plans or as directed by the Engineer for the duration of the highway project and shall be maintained by the Contractor. These signs shall be placed in addition to the required traffic control signs called for in Section 645 - Traffic Control. The advance construction warning signs shall be new and become the property of the State. The Contractor shall remove, clean, and deliver the signs and posts to the District Baseyard, or as directed by the Engineer, upon the completion of the project.



CROSSWALK STRIPING DETAIL

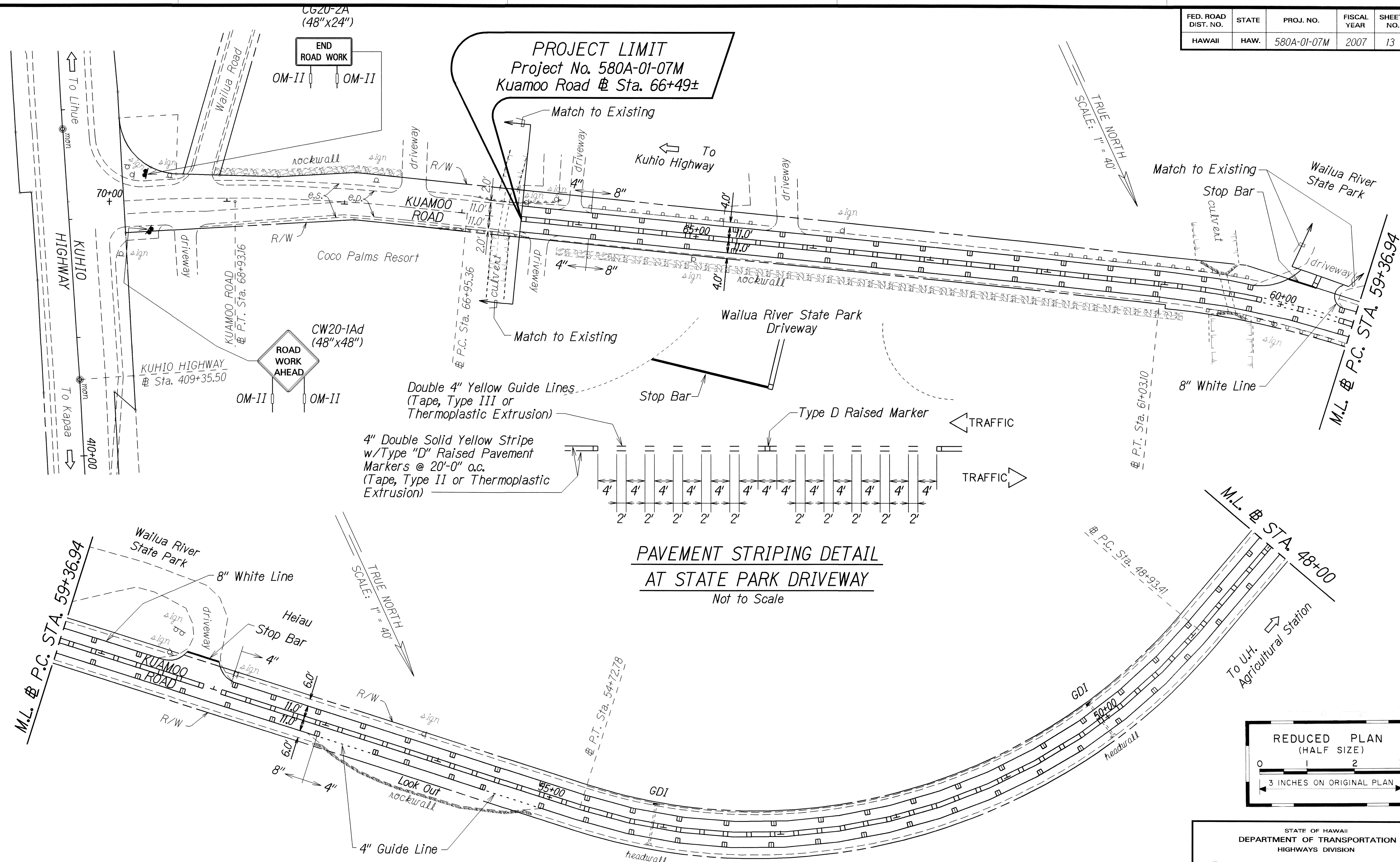
Not to Scale



STATE OF HAWAII  
DEPARTMENT OF TRANSPORTATION  
HIGHWAYS DIVISION  
**PAVEMENT MARKING**  
**LEGEND, DETAILS & NOTES**  
**KUAMOO ROAD RESURFACING**  
**KUHIO HIGHWAY TO LILIA PLACE**  
**PROJECT NO. 580A-01-07M**  
Scale: As Noted Date: May, 2007  
SHEET No. 12 OF 6 SHEETS

ORIGINAL PLAN	SURVEY PLOTTED BY	DATE
NOTE BOOK	DRAWN BY	07/09/07
add'l/dub	DESIGNED BY	
IN CHARGE	QUANTITIES BY	
	CHECKED BY	

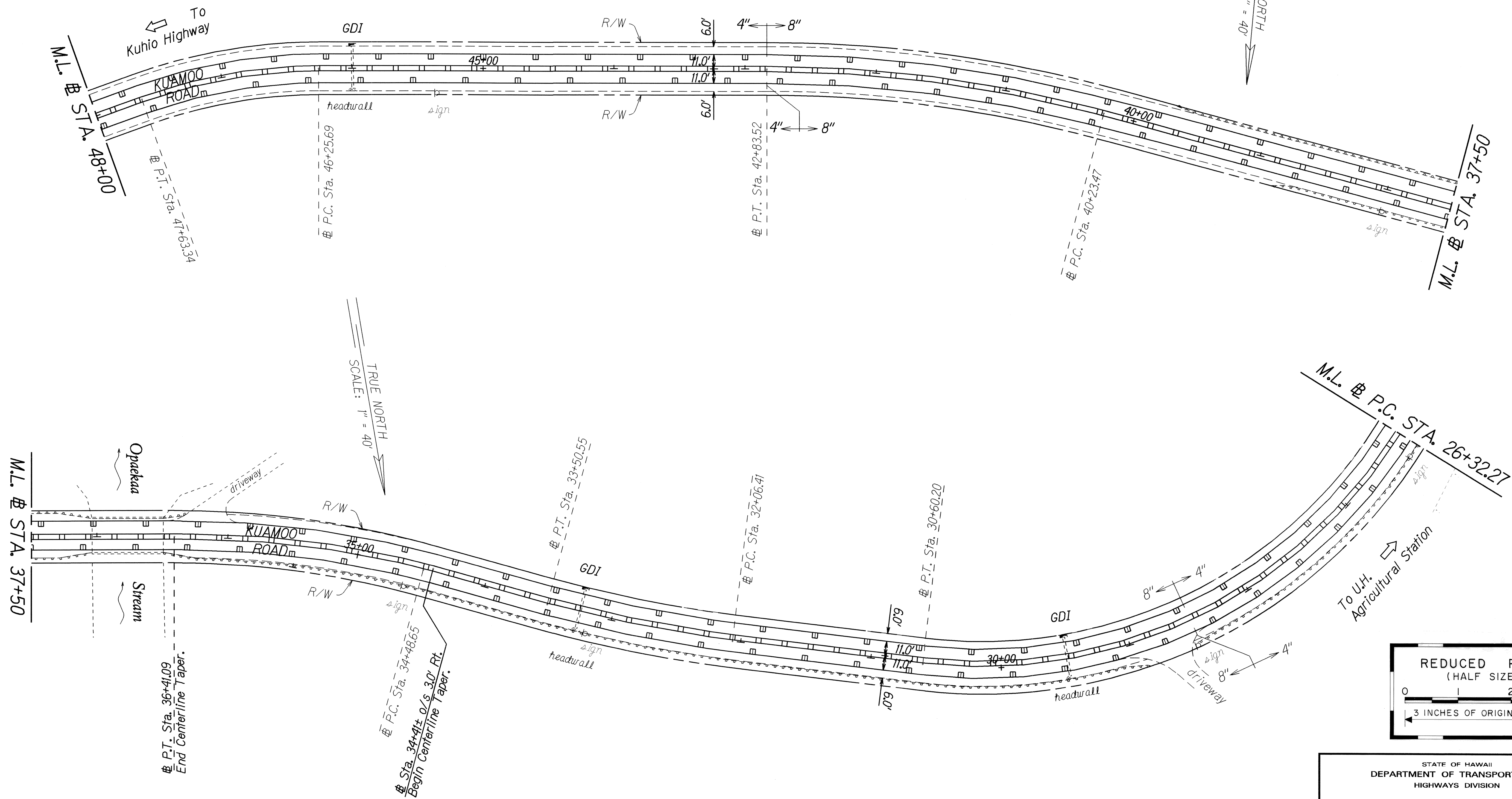
FED. ROAD DIST. NO.	STATE	PROJ. NO.	FISCAL YEAR	SHEET NO.	TOTAL SHEETS
HAWAII	HAW.	580A-01-07M	2007	13	17



ORIGINAL PLAN	SURVEY PLOTTED BY	DATE
NOTE BOOK	DRAWN BY	05/09/07
DESIGNED BY	DESIGNED BY	05/09/07
CHECKED BY	CHECKED BY	



FED. ROAD DIST. NO.	STATE	PROJ. NO.	FISCAL YEAR	SHEET NO.	TOTAL SHEETS
HAWAII	HAW.	580A-01-07M	2007	14	17



ORIGINAL PLAN	DATE
DRAWN BY	03/24/07
DESIGNED BY	02/17/07
QUANTITIES BY	
CHECKED BY	



STATE OF HAWAII  
DEPARTMENT OF TRANSPORTATION  
HIGHWAYS DIVISION

**PAVEMENT MARKING PLAN**

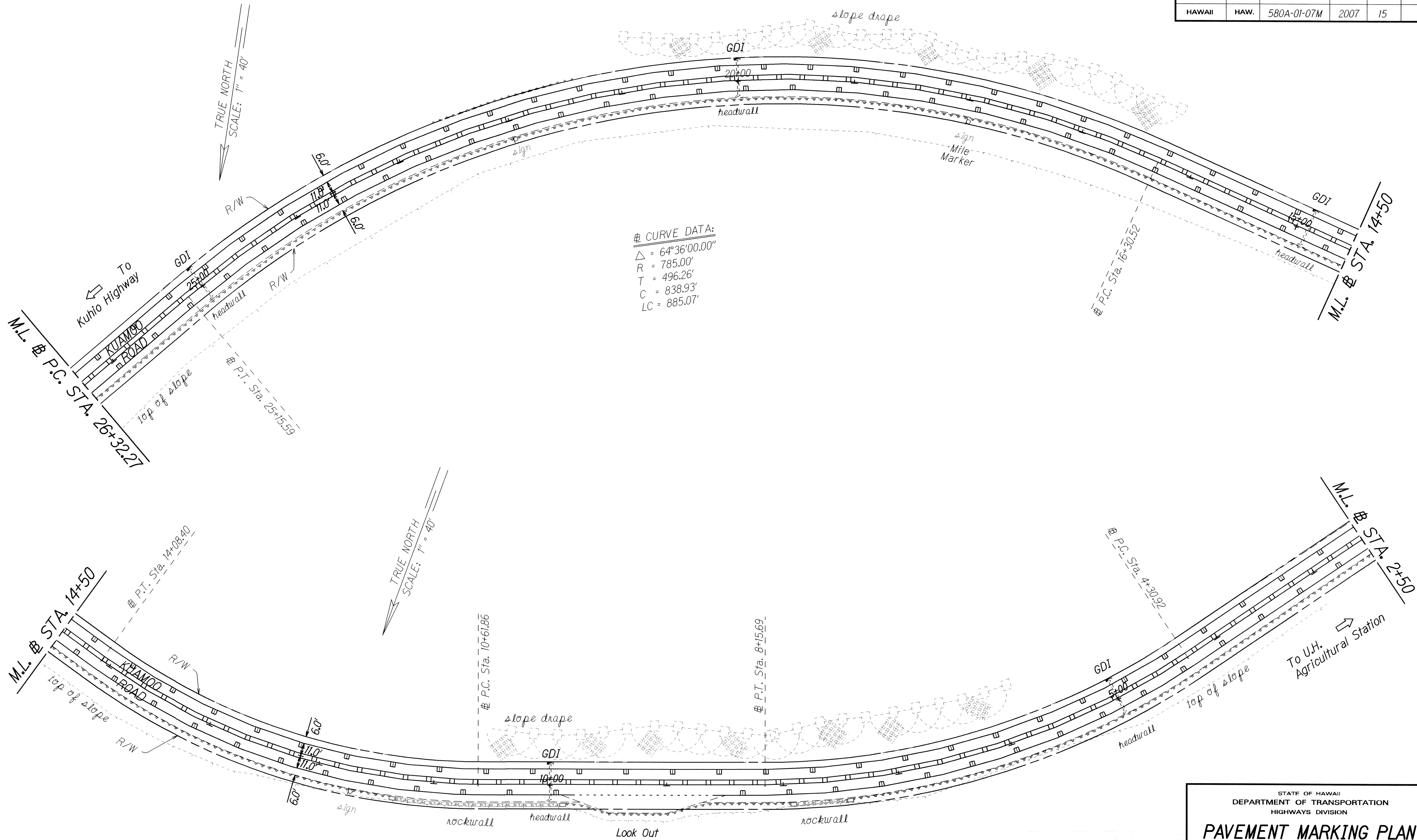
**KUAMOO ROAD RESURFACING  
KUHIO HIGHWAY TO LILIA PLACE**

**PROJECT NO. 580A-01-07M**

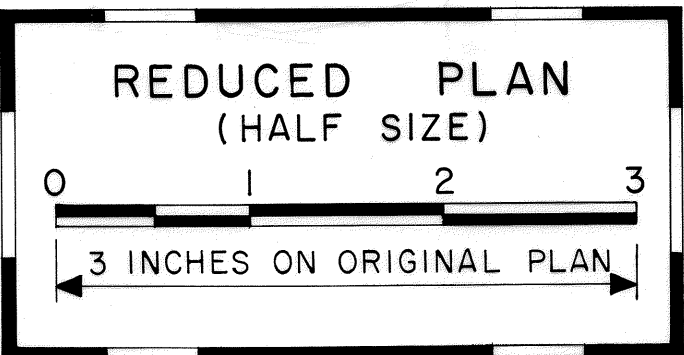
Scale: 1" = 40' Date: May, 2007

SHEET No. 14 OF 17 SHEETS

FED. ROAD DIST. NO.	STATE	PROJ. NO.	FISCAL YEAR	SHEET NO.	TOTAL SHEETS
HAWAII	HAW.	580A-01-07M	2007	15	17



ORIGINAL PLAN	SURVEY PLOTTED BY	DATE
NOTE BOOK	DRAWN BY	05/09/07
05/09/07	DESIGNED BY	
05/09/07	QUANTITIES BY	
05/09/07	CHECKED BY	



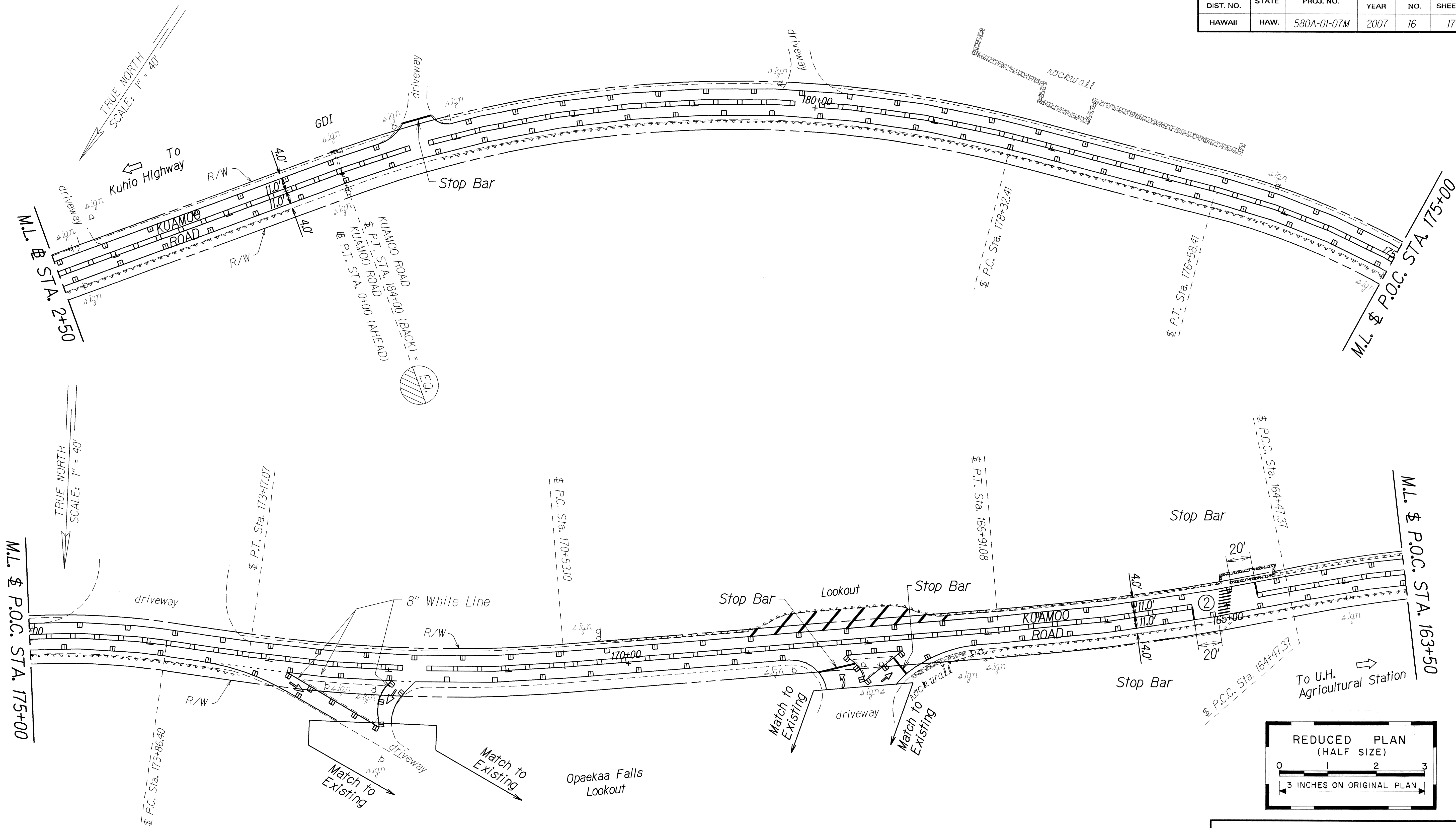
STATE OF HAWAII  
DEPARTMENT OF TRANSPORTATION  
HIGHWAYS DIVISION

**PAVEMENT MARKING PLAN**  
**KUAMOO ROAD RESURFACING**  
**KUHIO HIGHWAY TO LILIA PLACE**  
**PROJECT NO. 580A-01-07M**

Scale: 1" = 40'      Date: May, 2007

SHEET No. **T4** OF **6** SHEETS

FED. ROAD DIST. NO.	STATE	PROJ. NO.	FISCAL YEAR	SHEET NO.	TOTAL SHEETS
HAWAII	HAW.	580A-01-07M	2007	16	17



DATE	05/09/07
SURVEY PLOTTED BY	
DRAWN BY	
DESIGNED BY	
CHECKED BY	
NOTE BOOK	
ORIGINAL PLAN	



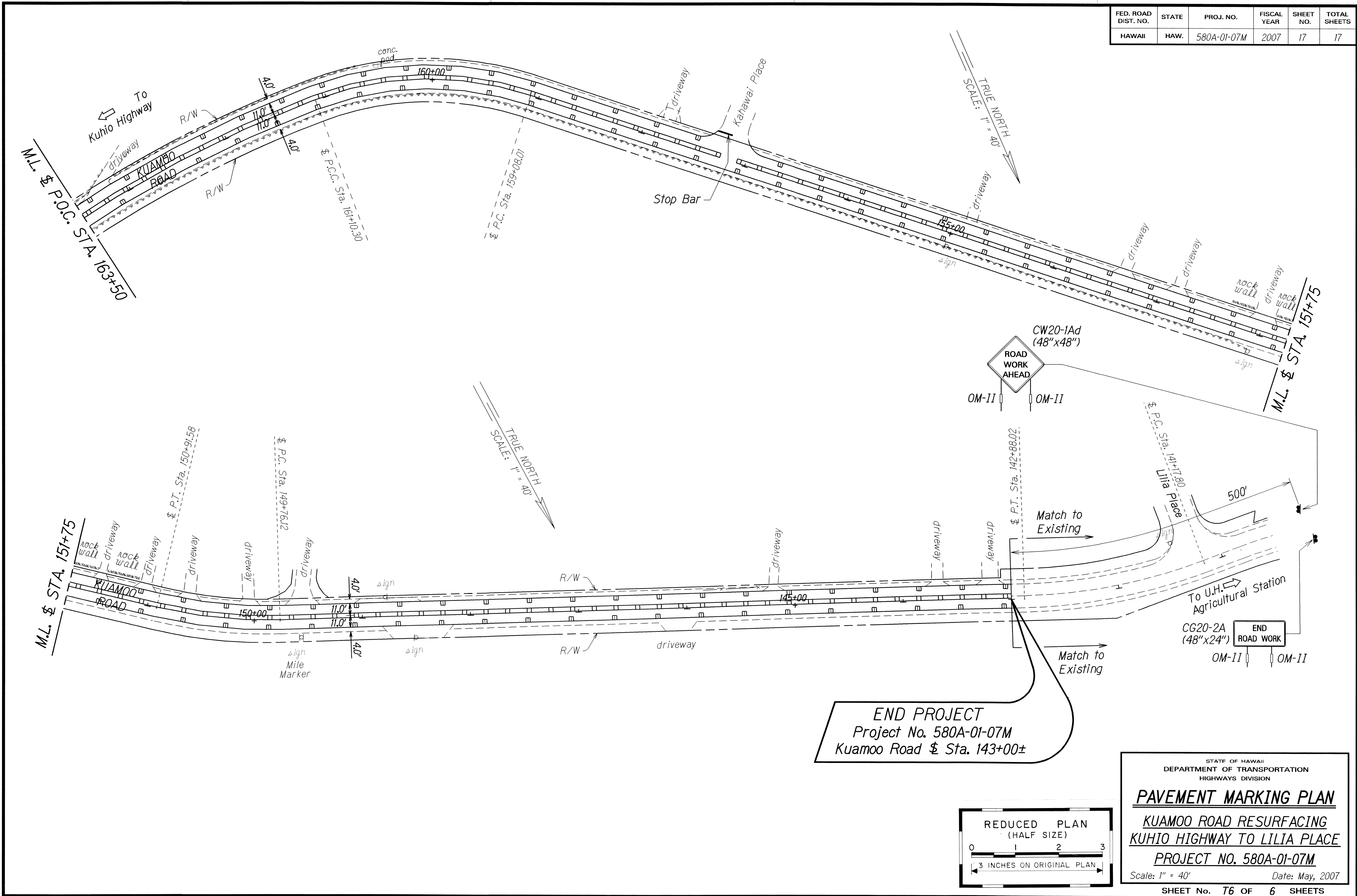
STATE OF HAWAII  
DEPARTMENT OF TRANSPORTATION  
HIGHWAYS DIVISION

**PAVEMENT MARKING PLAN**  
**KUAMOO ROAD RESURFACING**  
**KUHIO HIGHWAY TO LILIA PLACE**  
**PROJECT NO. 580A-01-07M**  
Scale: 1" = 40'  
Date: May, 2007

SHEET No. 15 OF 6 SHEETS

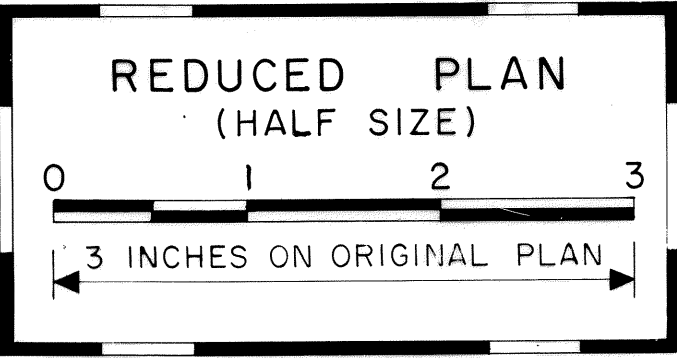


FED. ROAD DIST. NO.	STATE	PROJ. NO.	FISCAL YEAR	SHEET NO.	TOTAL SHEETS
HAWAII	HAW.	580A-01-07M	2007	17	17



SURVEY PLOTTED BY	DATE
DESIGNED BY	05/09/07
CHECKED BY	
NOTED BY	
QUANTITIES BY	
CHECKED BY	

END PROJECT  
Project No. 580A-01-07M  
Kuamoo Road & Sta. 143+00±



STATE OF HAWAII  
DEPARTMENT OF TRANSPORTATION  
HIGHWAYS DIVISION

### PAVEMENT MARKING PLAN

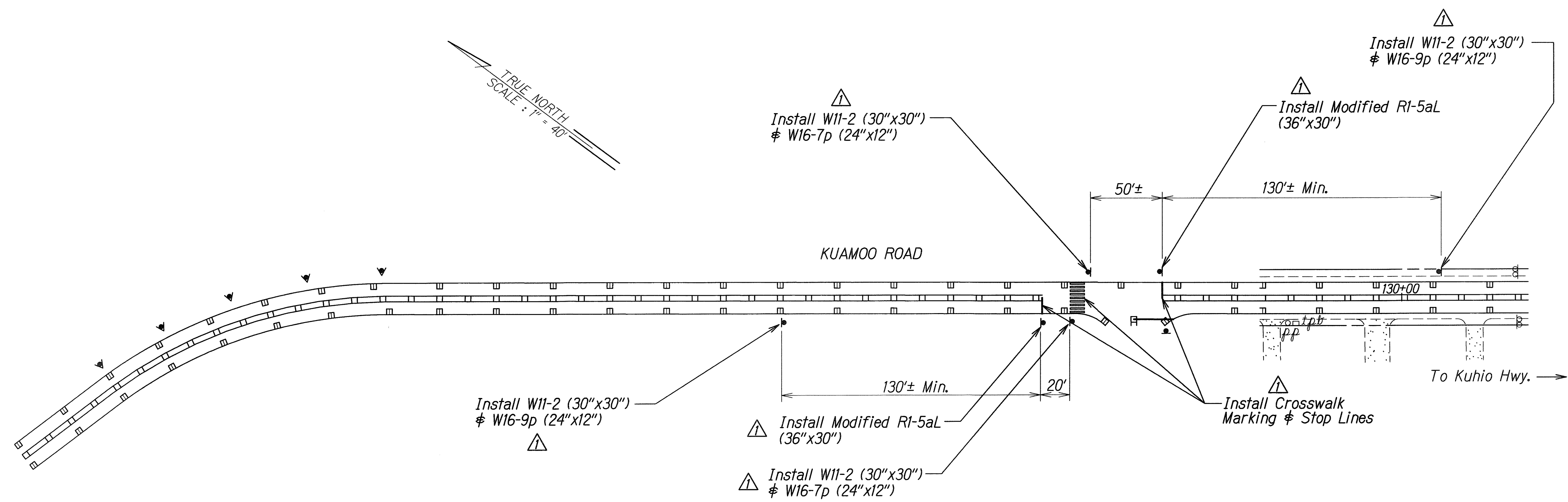
#### KUAMOO ROAD RESURFACING KUPIO HIGHWAY TO LILIA PLACE

PROJECT NO. 580A-01-07M

Scale: 1" = 40'      Date: May, 2007

SHEET No. 76 OF 6 SHEETS

FED. ROAD DIST. NO.	STATE	PROJ. NO.	FISCAL YEAR	SHEET NO.	TOTAL SHEETS
HAWAII	HAW.	580A-01-06M	2007	C.O. 17S-1	17



ORIGINAL PLAN	SURVEY PLOTTED BY	DATE
NOTE BOOK	DRAWN BY	07/05
DESIGNED BY	TRACED BY	
CHECKED BY	DESIGNED BY	
C.O. 17S-1001	CHECKED BY	
NO		

7/15/08	△	Install Pedestrian Crossing Signs and Crosswalk Marking
DATE		REVISION
STATE OF HAWAII DEPARTMENT OF TRANSPORTATION HIGHWAYS DIVISION <b>PAVEMENT MARKING &amp;            TRAFFIC SIGNING PLAN</b> <u>KUAMOO ROAD RESURFACING</u> <u>Kuhio Highway to Lilia Place</u> <u>Project No. 580A-01-07M</u> Scale: 1" = 40' Date: May 2007 SHEET No. 1 OF 1 SHEETS		

C.O. 17S-1