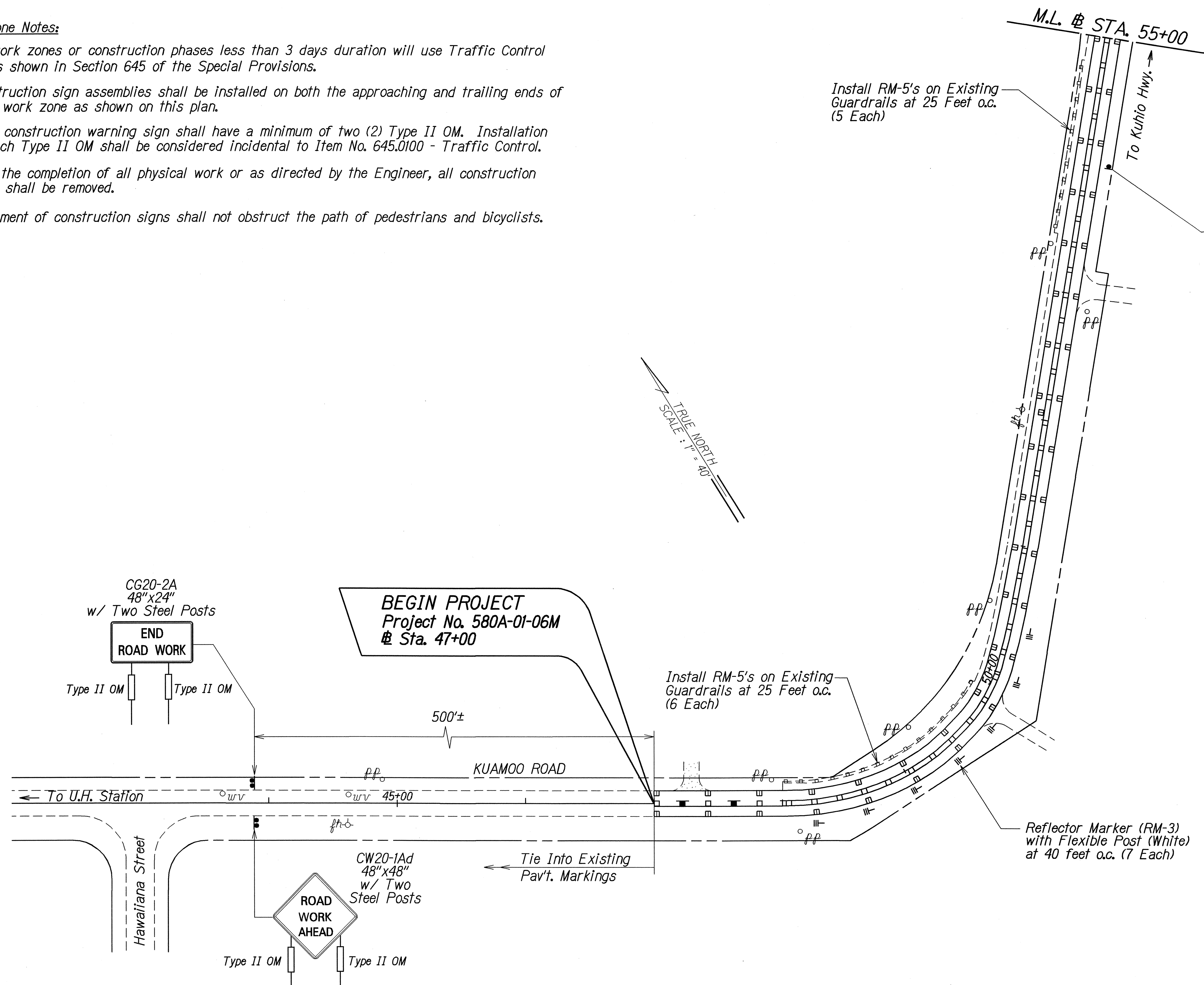


FED. ROAD DIST. NO.	STATE	PROJ. NO.	FISCAL YEAR	SHEET NO.	TOTAL SHEETS
HAWAII	HAW.	580A-01-06M	2006	22	28

Work Zone Notes:

1. All work zones or construction phases less than 3 days duration will use Traffic Control Plans shown in Section 645 of the Special Provisions.
2. Construction sign assemblies shall be installed on both the approaching and trailing ends of each work zone as shown on this plan.
3. Each construction warning sign shall have a minimum of two (2) Type II OM. Installation of each Type II OM shall be considered incidental to Item No. 645.0100 - Traffic Control.
4. Upon the completion of all physical work or as directed by the Engineer, all construction signs shall be removed.
5. Placement of construction signs shall not obstruct the path of pedestrians and bicyclists.



ORIGINAL PLAN	SURVEY PLOTTED BY	DATE
NOTED FOR	DRAWN BY	10/05
DESIGNED BY	TRACED BY	
QUANTITIES BY	CHECKED BY	
APPROVED BY		

STATE OF HAWAII  
DEPARTMENT OF TRANSPORTATION  
HIGHWAYS DIVISION

**PAVEMENT MARKING & TRAFFIC SIGNING PLAN**

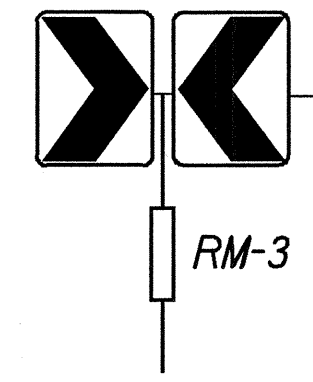
**KUAMOO ROAD RESURFACING**  
Vicinity of Hawaiiana Street to Lilia Place  
Project No. 580A-01-06M

Scale: 1" = 40' Date: March 2006

SHEET No. 1 OF 6 SHEETS

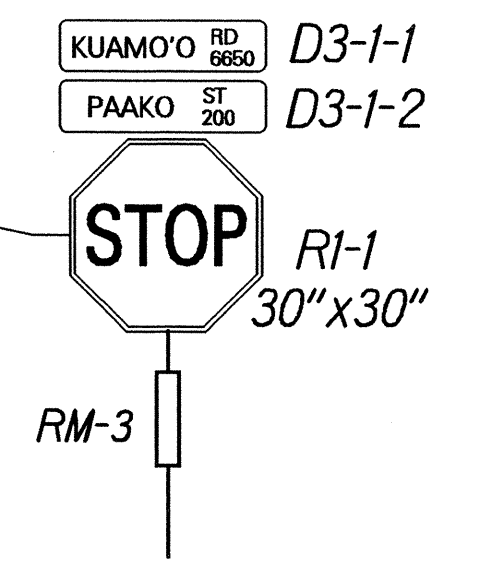
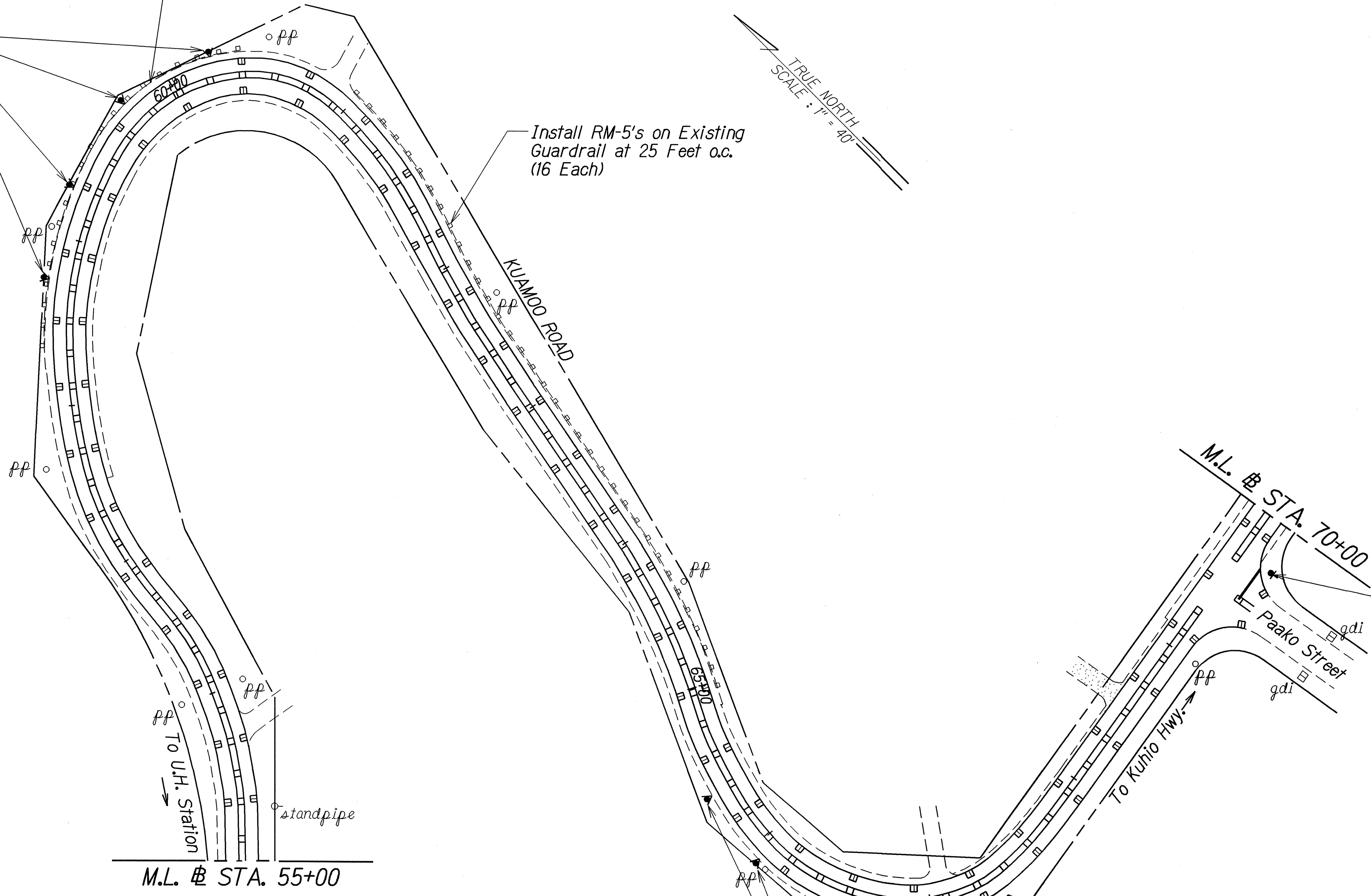
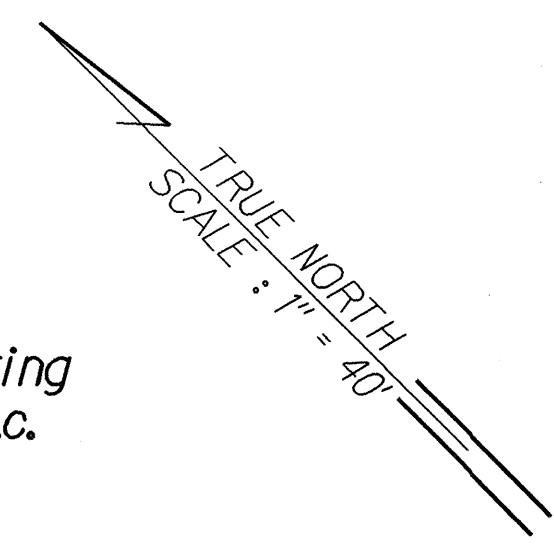
FED. ROAD DIST. NO.	STATE	PROJ. NO.	FISCAL YEAR	SHEET NO.	TOTAL SHEETS
HAWAII	HAW.	580A-01-06M	2006	23	28

W1-8R (18"x24")  
 & W1-8L (18"x24")  
 (4 Each)

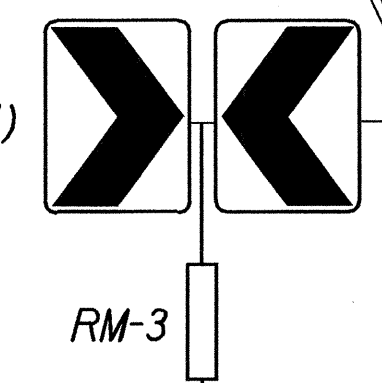


Install RM-5's on Existing  
 Guardrail at 25 Feet o.c.  
 (7 Each)

Install RM-5's on Existing  
 Guardrail at 25 Feet o.c.  
 (16 Each)



W1-8R (18"x24")  
 & W1-8L (18"x24")  
 (5 Each)



ORIGINAL PLAN	SURVEY PLATTED BY	DATE
NOTED	DRAWN BY	10/05
DESIGNED BY	TRACED BY	
QUANTITIES BY		
CHECKED BY		

STATE OF HAWAII  
 DEPARTMENT OF TRANSPORTATION  
 HIGHWAYS DIVISION

**PAVEMENT MARKING &  
 TRAFFIC SIGNING PLAN**

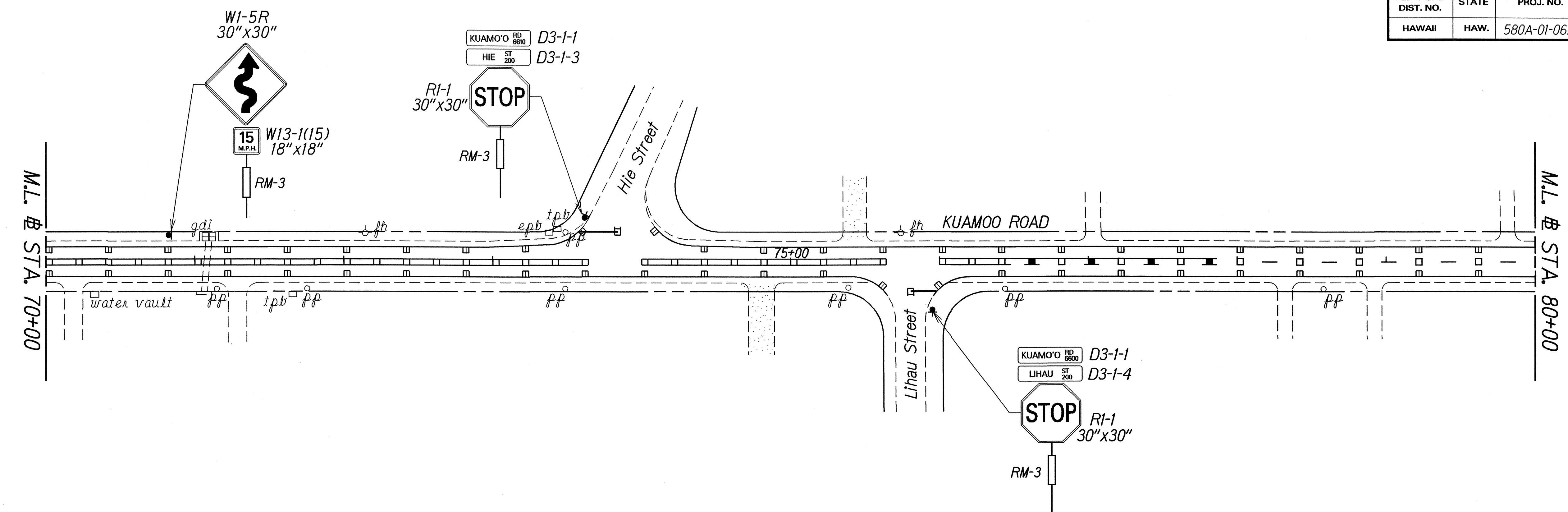
**KUAMOO ROAD RESURFACING**  
 Vicinity of Hawaiiana Street to Lilia Place  
 Project No. 580A-01-06M

Scale: 1" = 40'      Date: March 2006

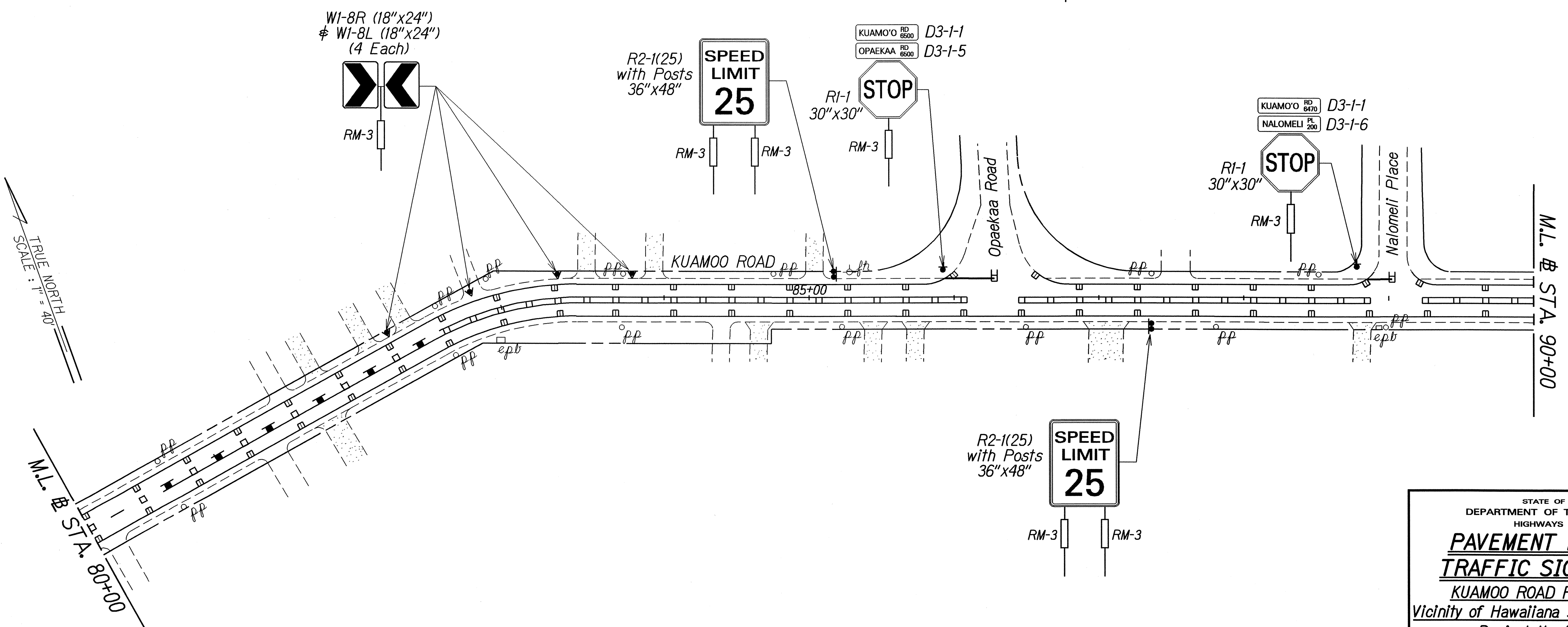
SHEET No. 2 OF 6 SHEETS

FED. ROAD DIST. NO.	STATE	PROJ. NO.	FISCAL YEAR	SHEET NO.	TOTAL SHEETS
HAWAII	HAW.	580A-01-06M	2006	24	28

TRUE NORTH  
SCALE: 1" = 40'



TRUE NORTH  
SCALE: 1" = 40'



ORIGINAL PLAN	DATE
SURVEY PLOTTED BY	10/05
DRAWN BY	
DESIGNED BY	
QUANTITIES BY	
CHECKED BY	

STATE OF HAWAII  
DEPARTMENT OF TRANSPORTATION  
HIGHWAYS DIVISION

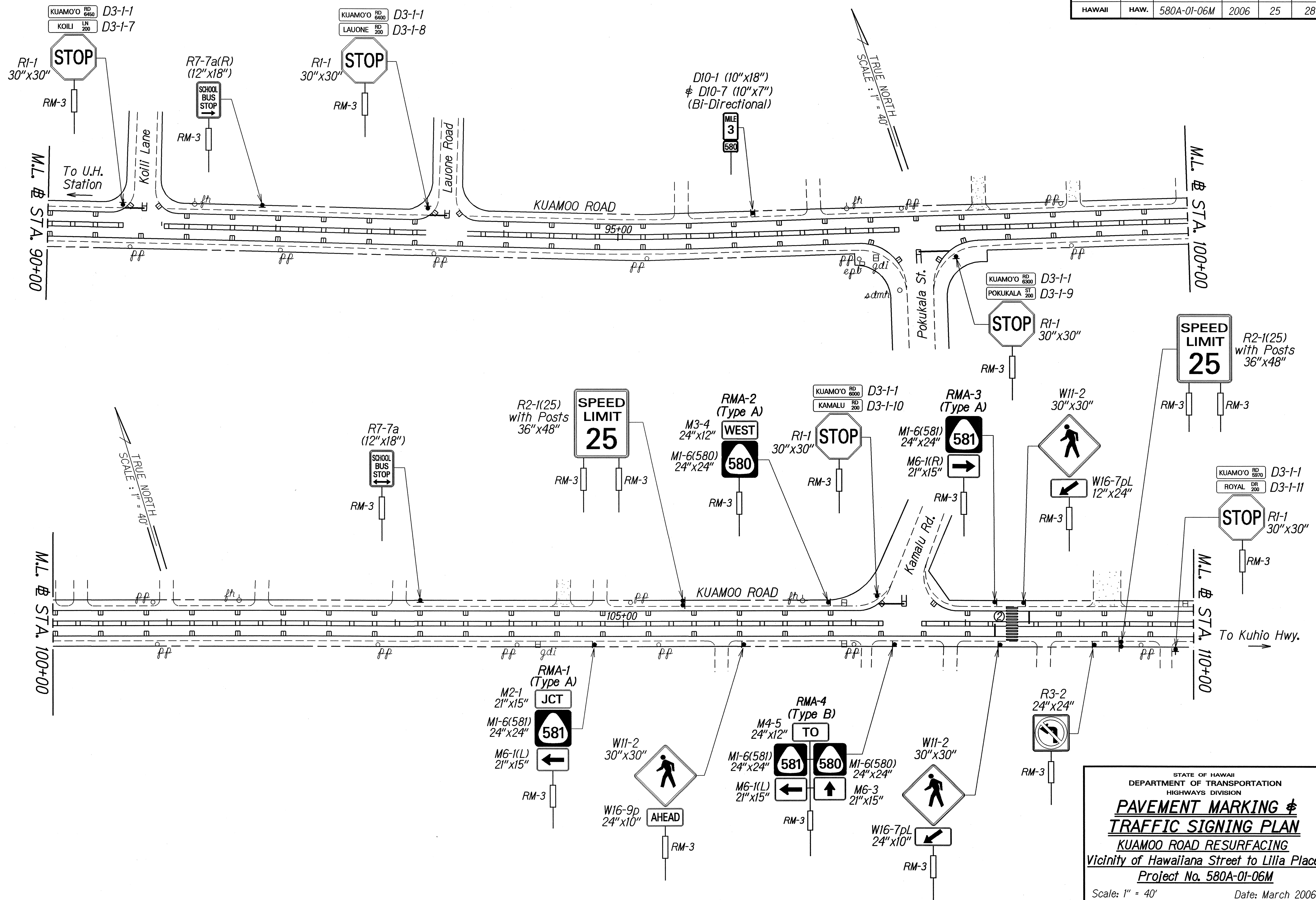
**PAVEMENT MARKING & TRAFFIC SIGNING PLAN**

**KUAMOO ROAD RESURFACING**  
Vicinity of Hawaiiana Street to Lilia Place  
Project No. 580A-01-06M

Scale: 1" = 40'      Date: March 2006

SHEET No. 3 OF 6 SHEETS

FED. ROAD DIST. NO.	STATE	PROJ. NO.	FISCAL YEAR	SHEET NO.	TOTAL SHEETS
HAWAII	HAW.	580A-01-06M	2006	25	28



ORIGINAL PLAN	DATE	11/05
SURVEY PLATTED BY		
DRAWN BY		
TRACED BY		
DESIGNED BY		
NOTED BY		
QUANTITIES BY		
CHECKED BY		

STATE OF HAWAII  
DEPARTMENT OF TRANSPORTATION  
HIGHWAYS DIVISION

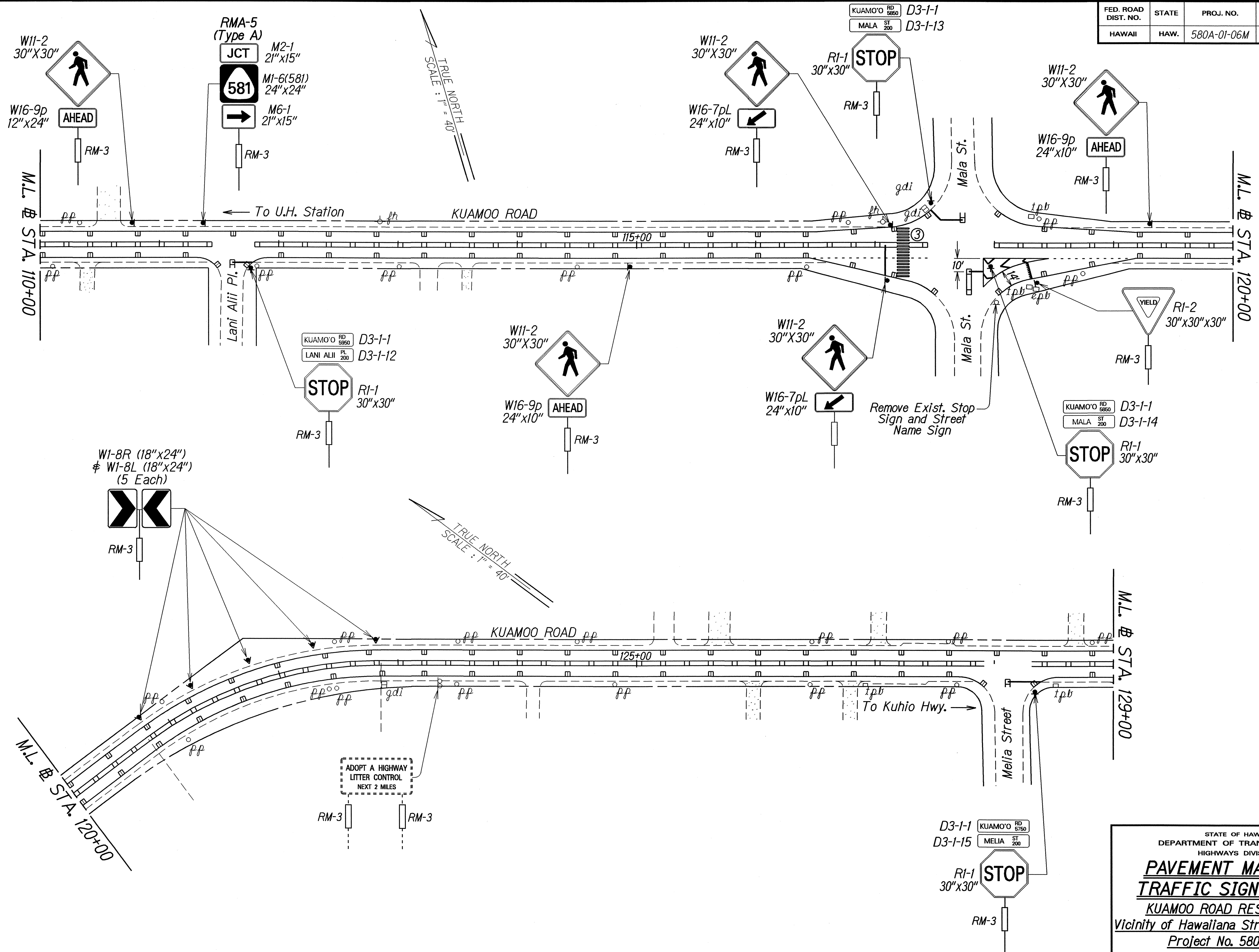
**PAVEMENT MARKING &  
TRAFFIC SIGNING PLAN**

**KUAMOO ROAD RESURFACING**  
Vicinity of Hawaiiana Street to Lilia Place  
Project No. 580A-01-06M

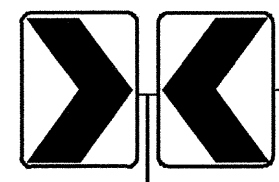
Scale: 1" = 40'      Date: March 2006

SHEET No. 4 OF 6 SHEETS

FED. ROAD DIST. NO.	STATE	PROJ. NO.	FISCAL YEAR	SHEET NO.	TOTAL SHEETS
HAWAII	HAW.	580A-01-06M	2006	26	28



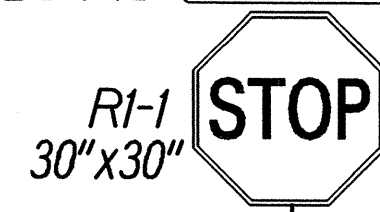
W1-8R (18"x24")  
 & W1-8L (18"x24")  
 (5 Each)



ADOPT A HIGHWAY  
 LITTER CONTROL  
 NEXT 2 MILES

RM-3 RM-3

D3-1-1 KUAMO'O RD 5750  
 D3-1-15 MELIA ST 200



RM-3

DESIGNED BY	DATE
TRACED BY	
NOTED BY	
QUANTITIES BY	
CHECKED BY	

STATE OF HAWAII  
 DEPARTMENT OF TRANSPORTATION  
 HIGHWAYS DIVISION

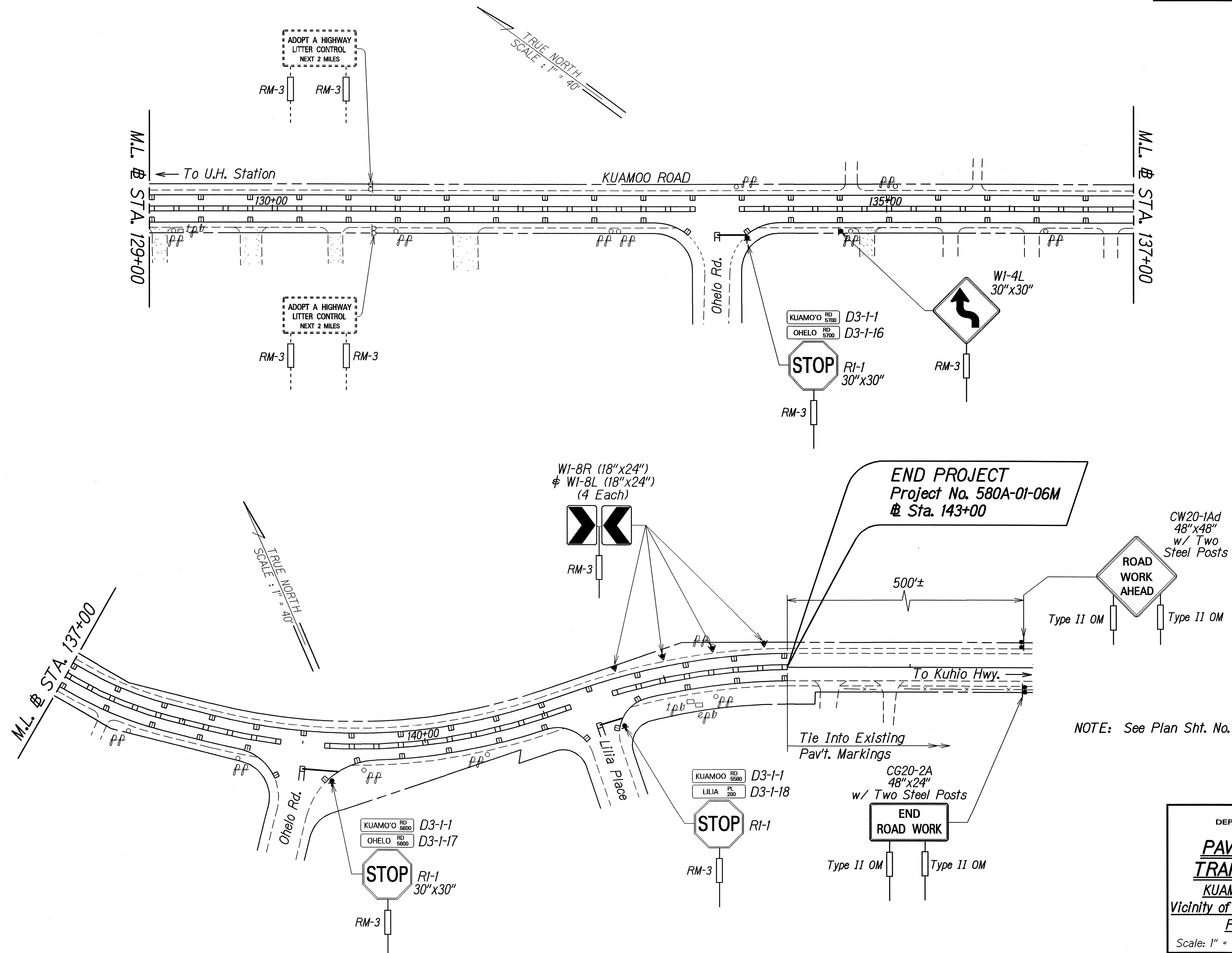
**PAVEMENT MARKING &  
 TRAFFIC SIGNING PLAN**

**KUAMOO ROAD RESURFACING**  
 Vicinity of Hawaiiana Street to Lilia Place  
 Project No. 580A-01-06M

Scale: 1" = 40' Date: March 2006

SHEET No. 5 OF 6 SHEETS

FED. ROAD DIST. NO.	STATE	PROJ. NO.	FISCAL YEAR	SHEET NO.	TOTAL SHEETS
HAWAII	HAW.	580A-01-06M	2006	27	28



NOTE: See Plan Sht. No. 22 for Work Zone Notes.

ORIGINAL PLAN	DATE
SURVEY PLOTTED BY	10/05
DRAWN BY	
TRACED BY	
DESIGNED BY	
QUANTITIES BY	
CHECKED BY	

STATE OF HAWAII  
DEPARTMENT OF TRANSPORTATION  
HIGHWAYS DIVISION

**PAVEMENT MARKING & TRAFFIC SIGNING PLAN**

**KUAMOO ROAD RESURFACING**  
Vicinity of Hawaiiana Street to Lilia Place  
Project No. 580A-01-06M

Scale: 1" = 40' Date: March 2006

SHEET No. 6 OF 6 SHEETS