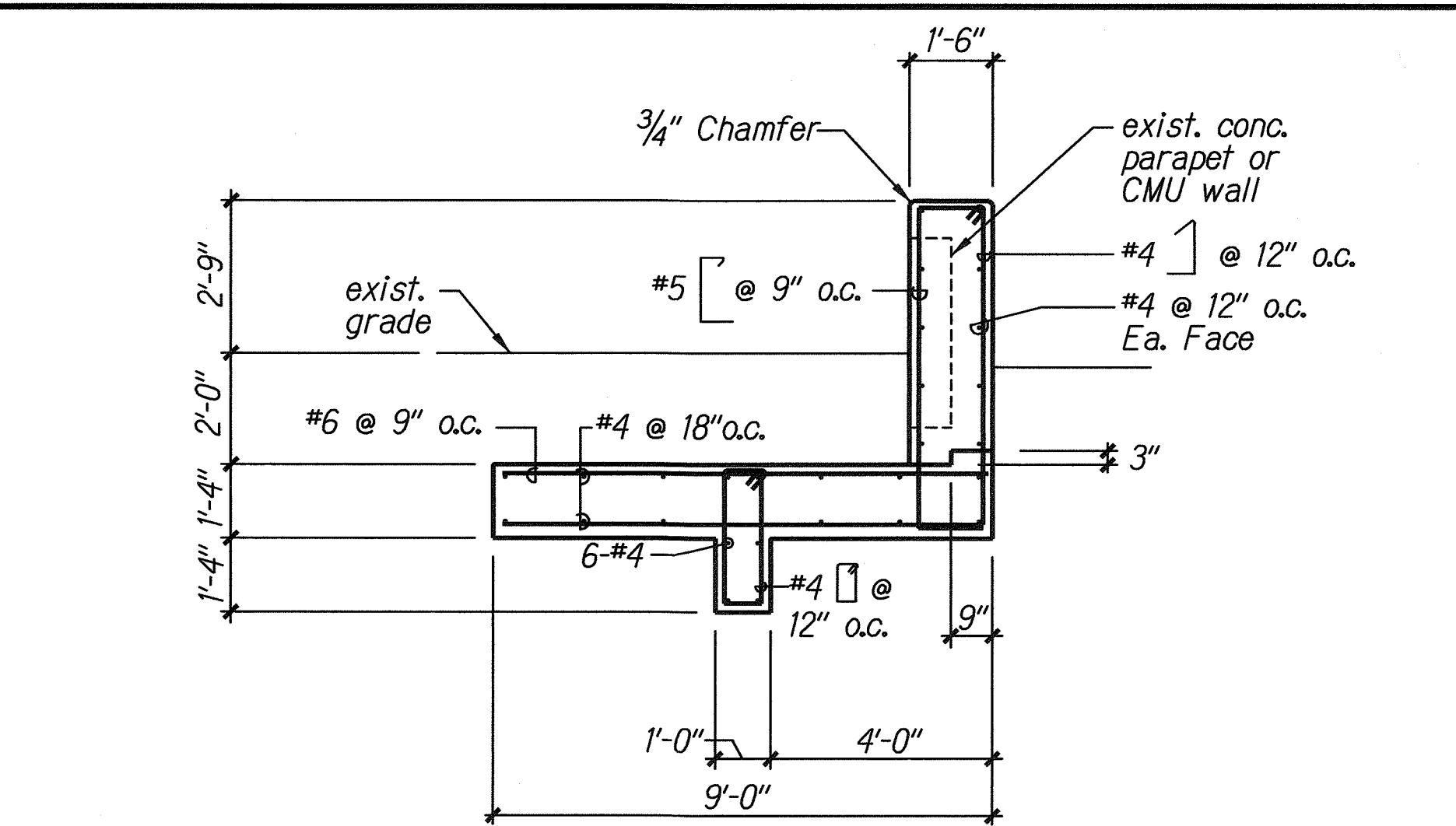
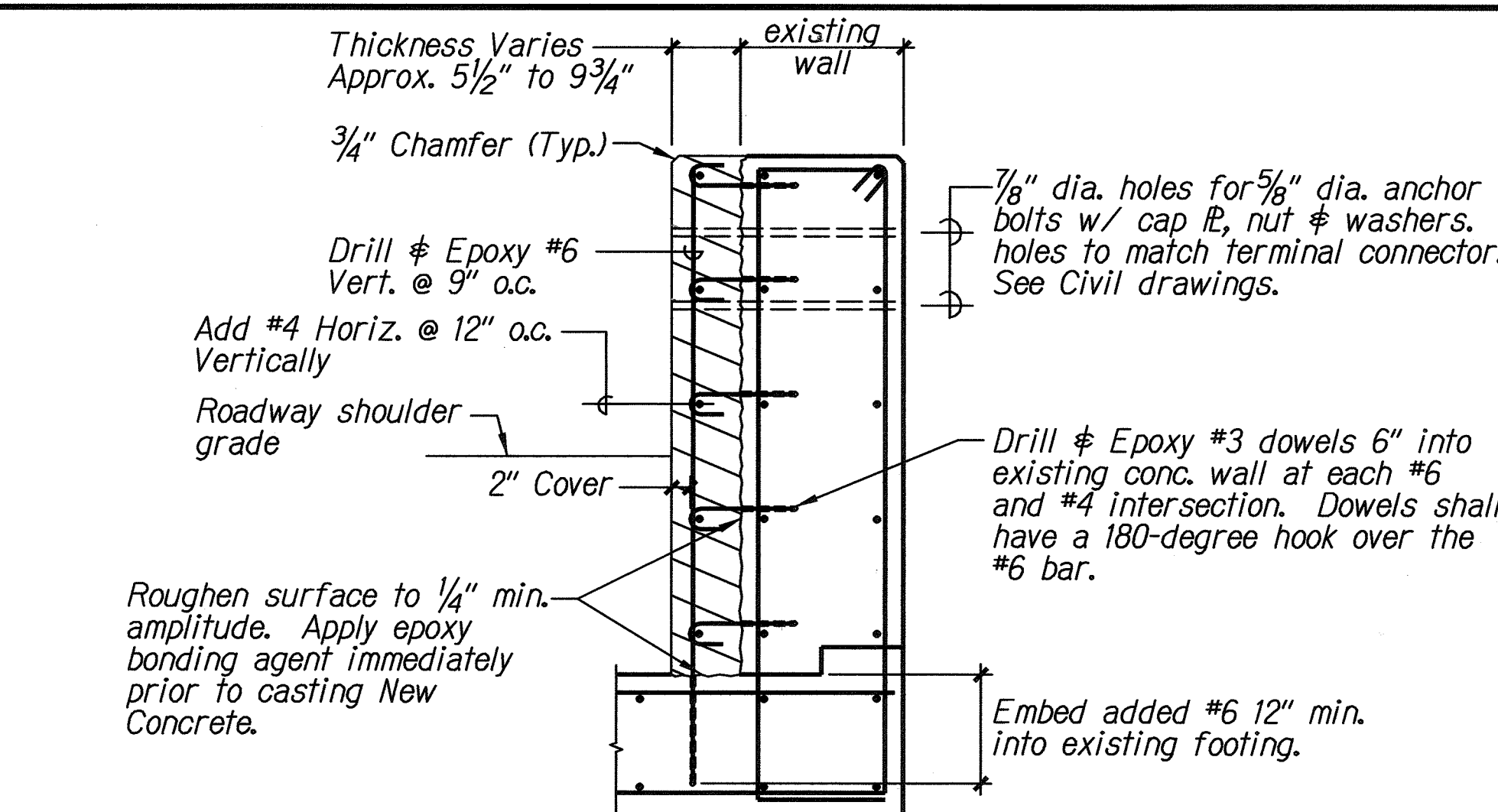


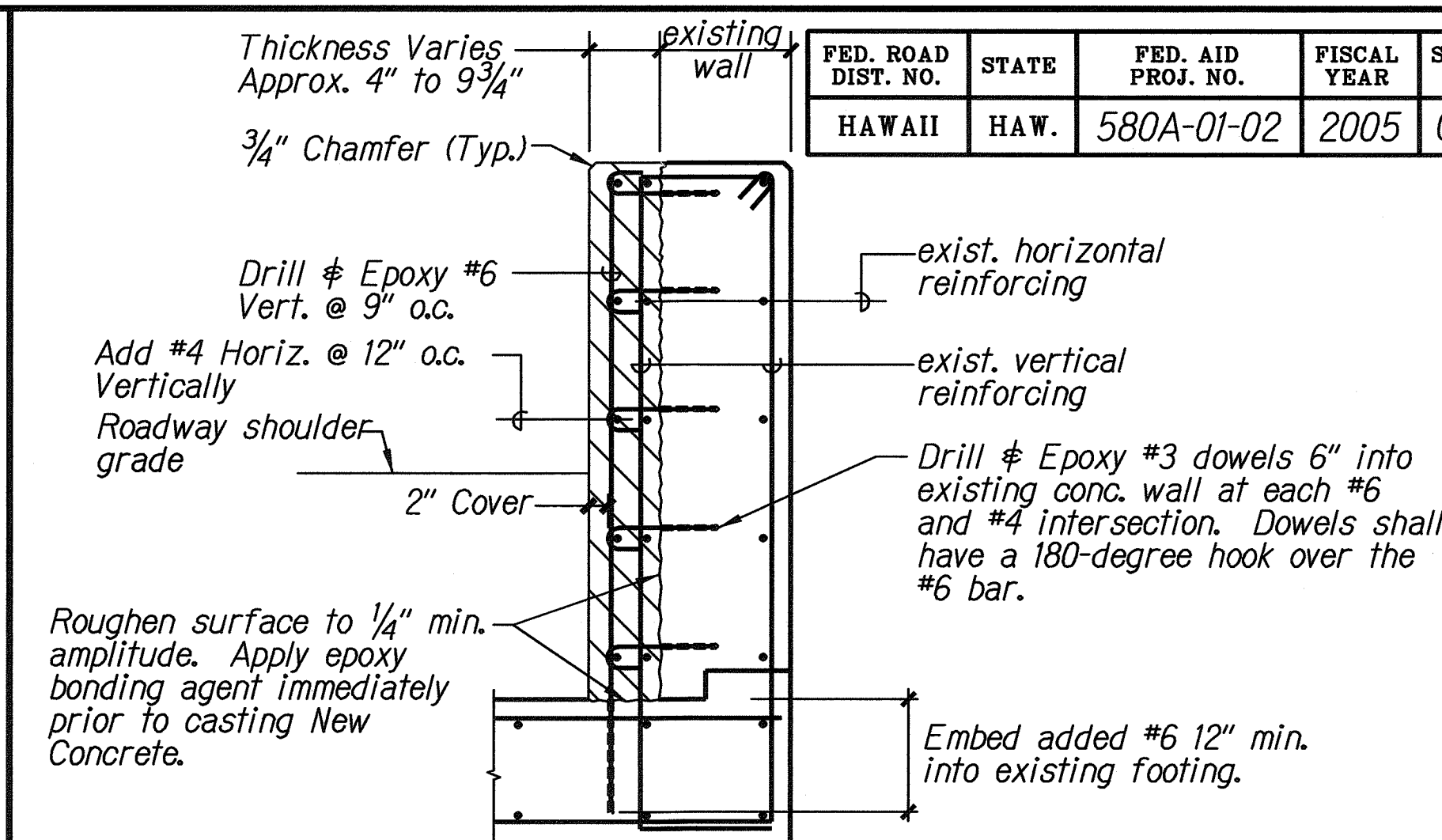
FED. ROAD DIST. NO.	STATE	FED. AID PROJ. NO.	FISCAL YEAR	SHEET NO.	TOTAL SHEETS
HAWAII	HAW.	580A-01-02	2005	C.025	25



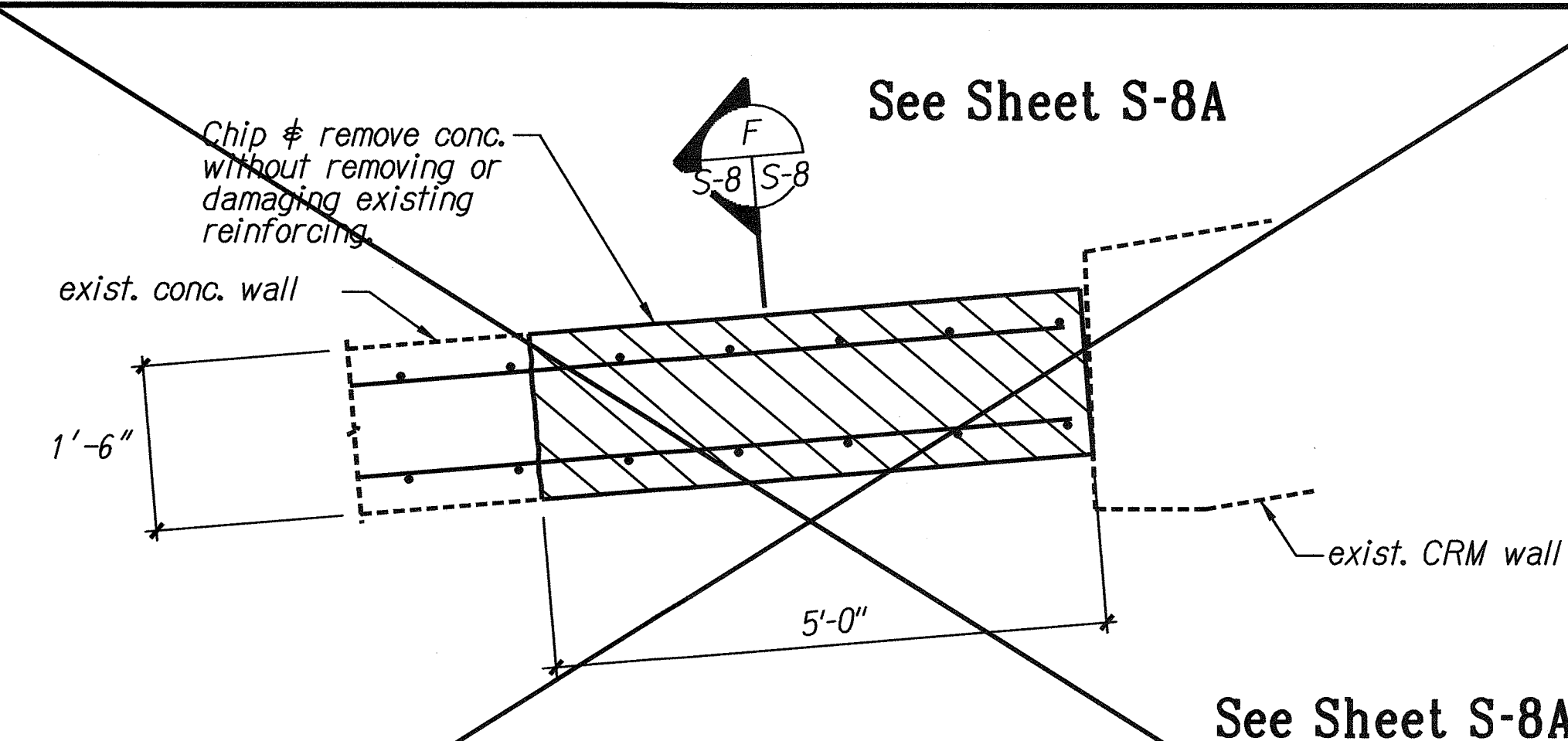
A TYP. SECTION OF EXIST'G CONC. WALL
S-2 S-8 Scale: 3/4" = 1'-0"



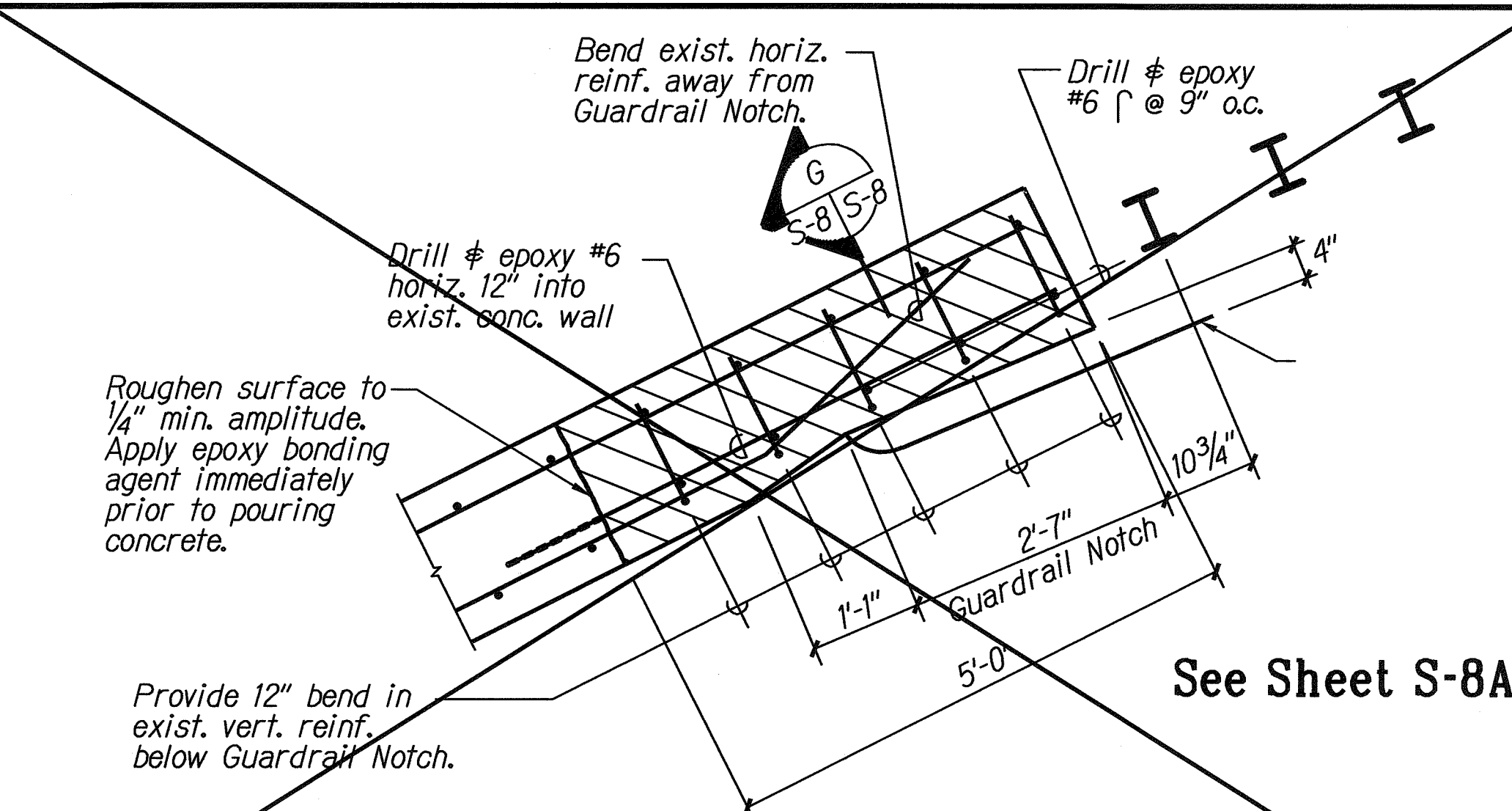
B SECTION OF WALL MODIFICATION
S-8 S-8 Scale: 3/4" = 1'-0"



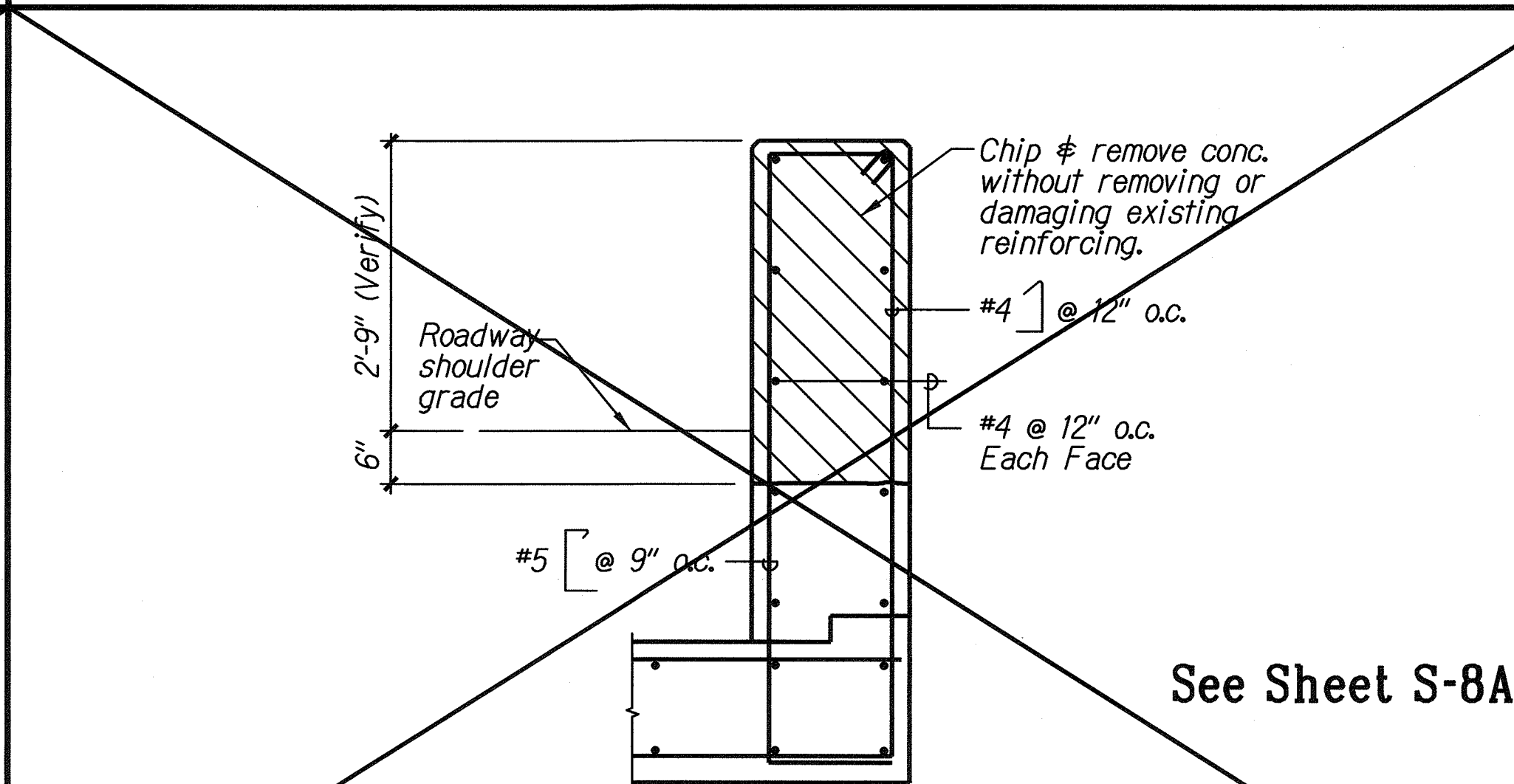
C SECTION OF WALL MODIFICATION
S-8 S-8 Scale: 3/4" = 1'-0"



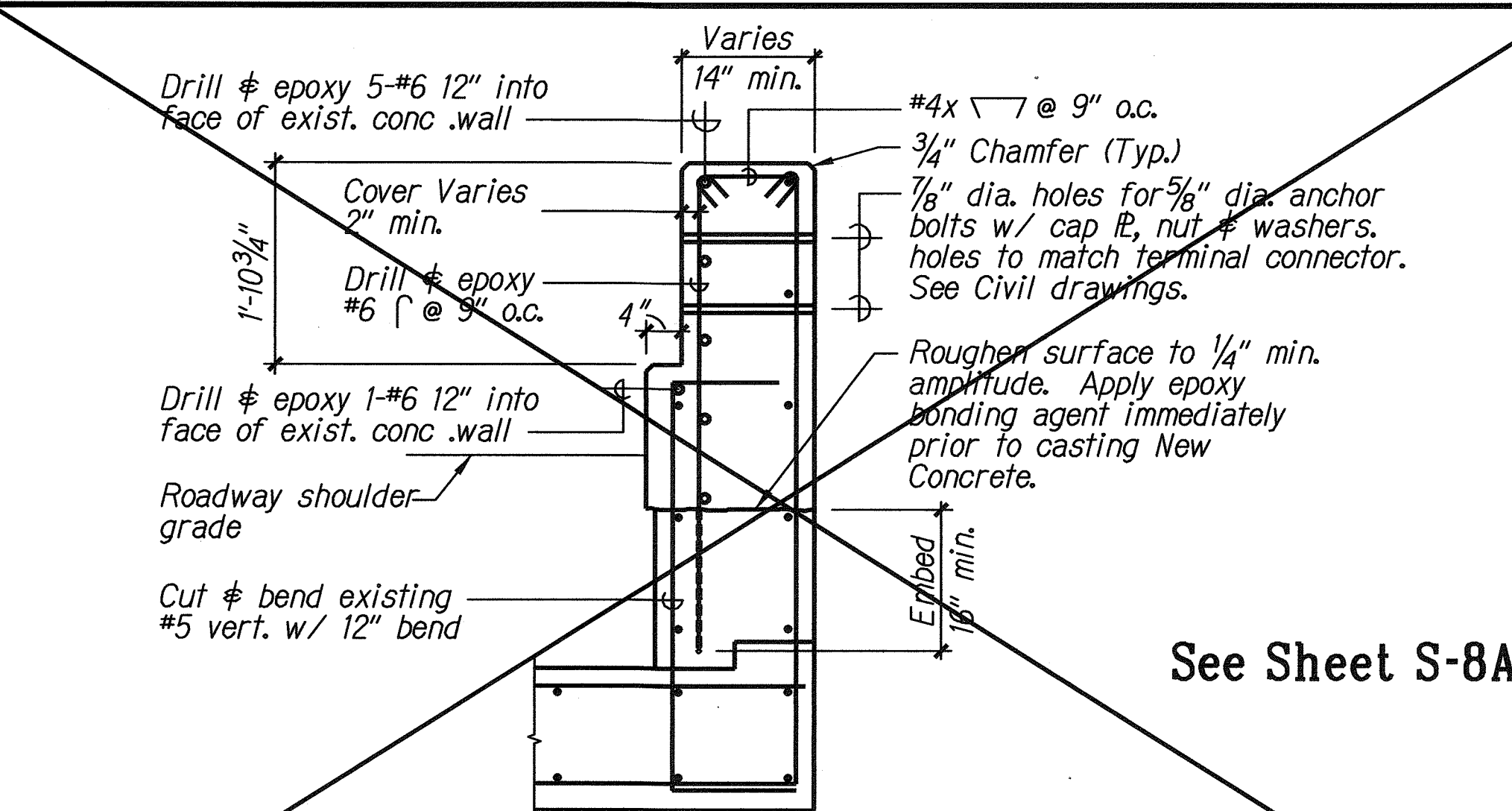
D DEMOLITION OF EXISTING WALL NEAR STA. 7+60
S-2 S-8 Scale: 3/4" = 1'-0"



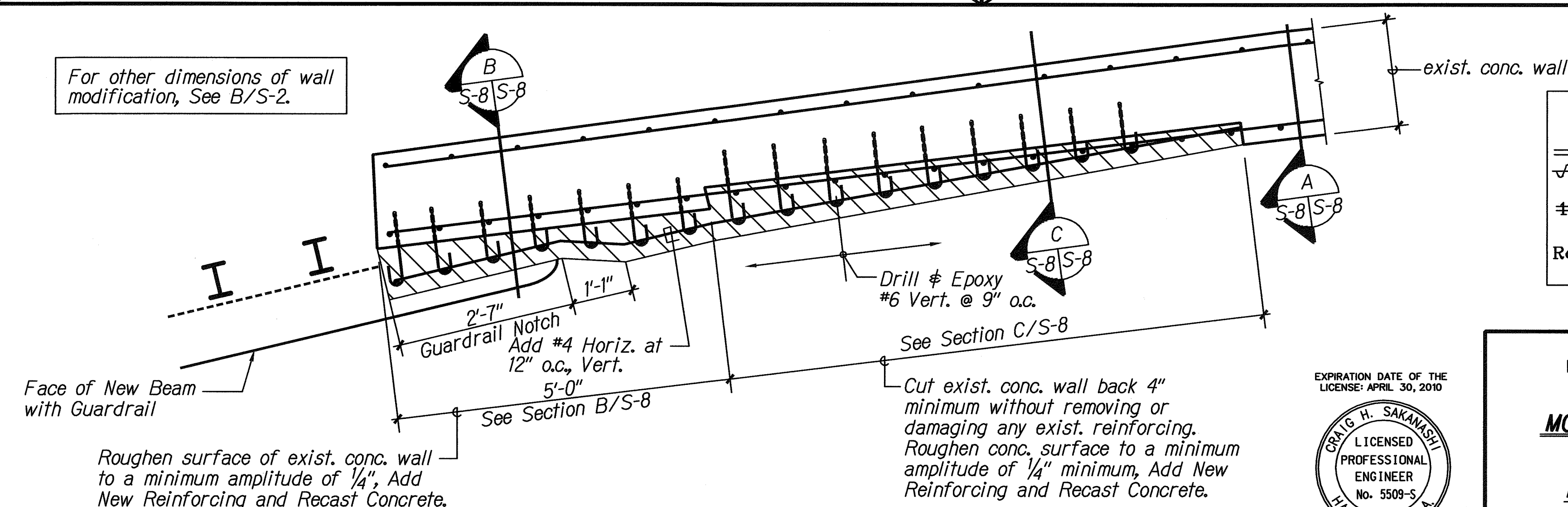
E WALL MODIFICATION NEAR STA. 7+60
S-2 S-8 Scale: 3/4" = 1'-0"



F DEMOLITION OF EXIST'G WALL
S-8 S-8 Scale: 3/4" = 1'-0"



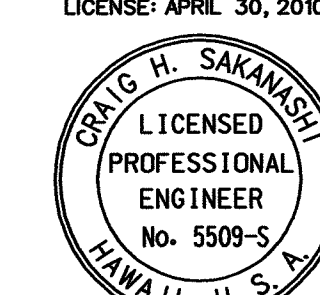
G SECTION OF WALL MODIFICATION
S-8 S-8 Scale: 3/4" = 1'-0"



H WALL MODIFICATION NEAR STA. 11+50
S-2 S-8 Scale: 3/4" = 1'-0"

LEGEND FOR AS-BUILT POSTINGS	
~~~~~	Squiggly line for as-built deletion
==	Double line for as-built deletion
Roadway	Text for as-built posting

EXPIRATION DATE OF THE LICENSE: APRIL 30, 2010



THIS WORK WAS PREPARED BY ME OR UNDER MY SUPERVISION.

STATE OF HAWAII  
DEPARTMENT OF TRANSPORTATION  
HIGHWAYS DIVISION

### MODIFICATIONS TO EXISTING CONCRETE WALLS

KUAMOO ROAD RETAINING WALL  
IN THE VICINITY OF M.P. 1J  
PROJECT NO. 580A-01-02

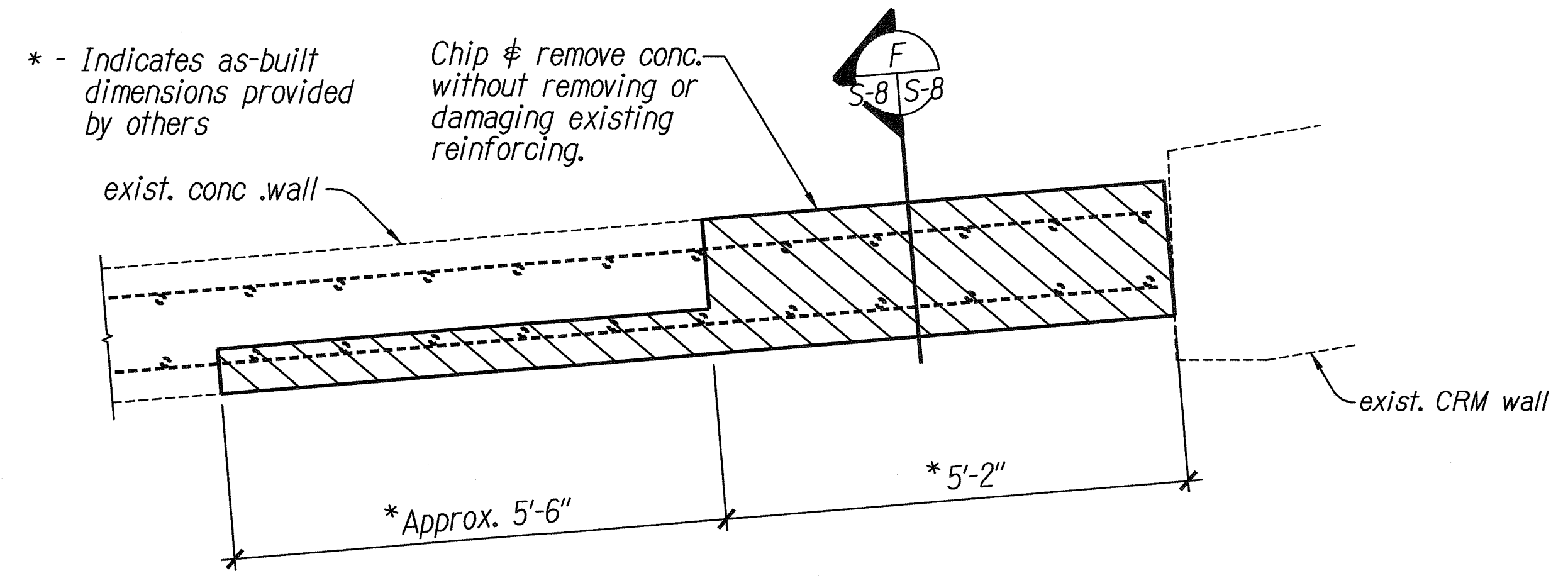
Scale: As Noted Date: September 2005

SHEET No. S-8 OF 8 SHEETS

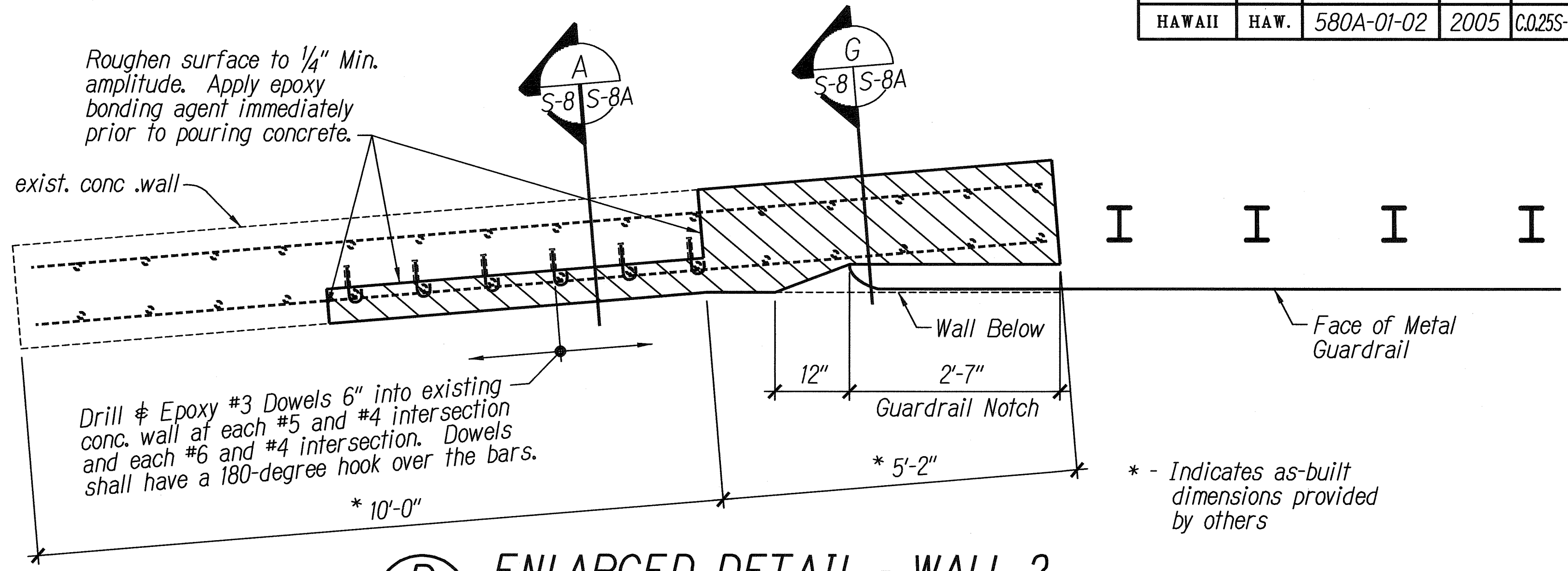
"AS-BUILT"

C.025

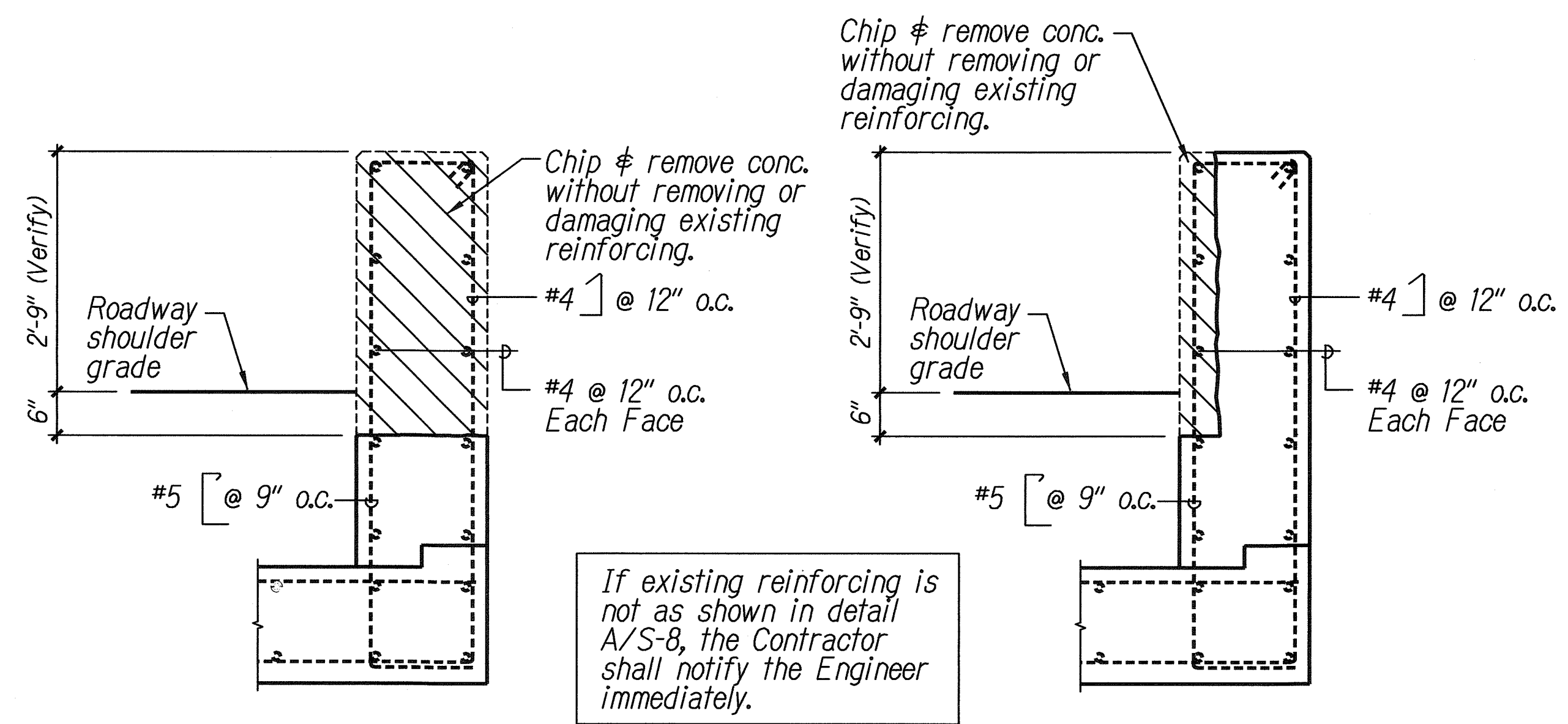
FED. ROAD DIST. NO.	STATE	FED. AID PROJ. NO.	FISCAL YEAR	SHEET NO.	TOTAL SHEETS
HAWAII	HAW.	580A-01-02	2005	C.O.25S-1	25



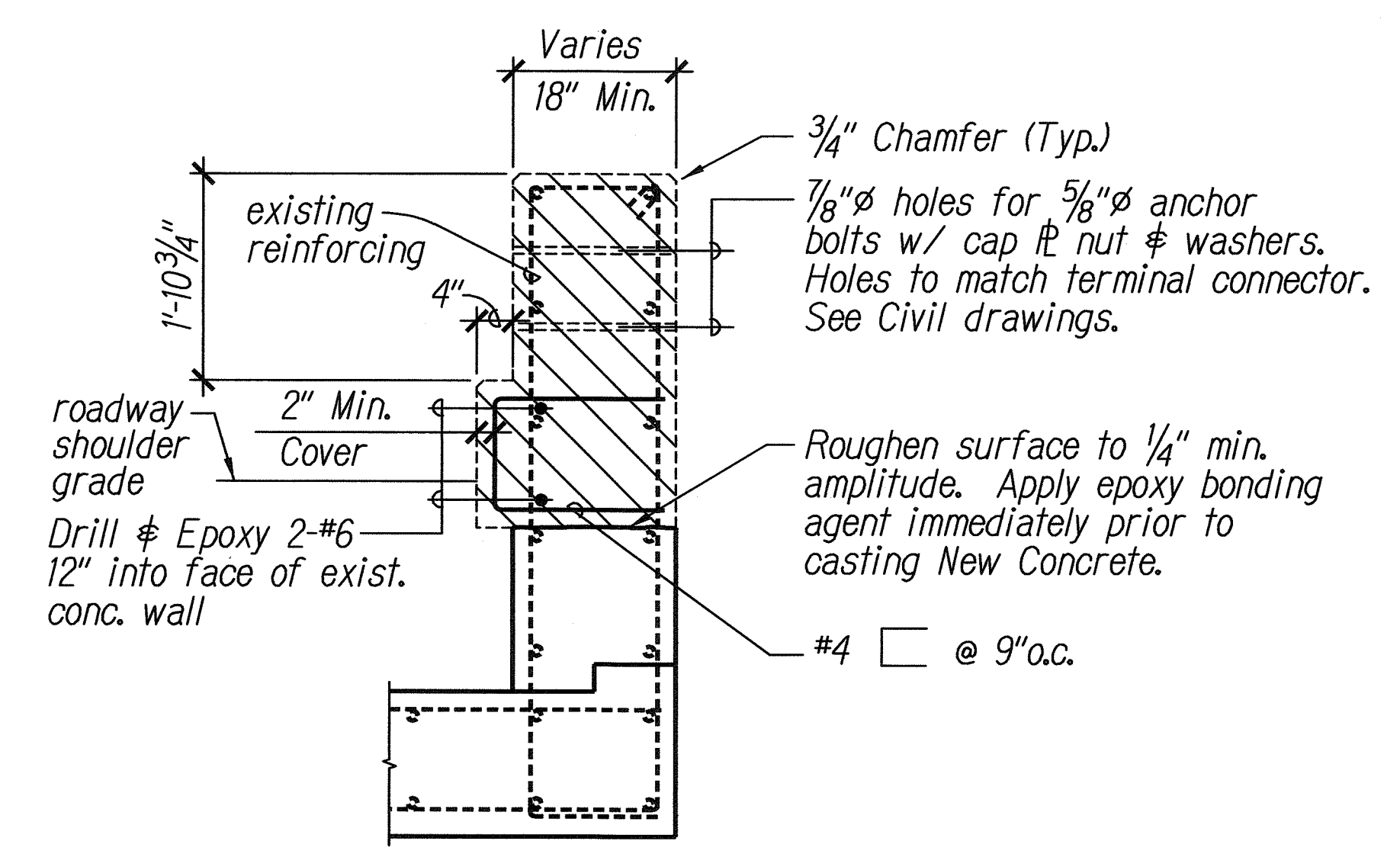
**A** DEMOLITION OF EXISTING WALL NEAR STA. 7+60  
S-2 S-8A Scale: 3/4" = 1'-0"



**B** ENLARGED DETAIL - WALL 2  
S-2 S-8A Scale: 3/4" = 1'-0"



**C** DEMOLITION OF EXISTING WALL  
S-2 S-8A Scale: 3/4" = 1'-0"



**D** SECTION OF WALL MODIFICATION  
S-2 S-8A Scale: 3/4" = 1'-0"

**LEGEND FOR AS-BUILT POSTINGS**

	Squiggly line for as-built deletion
	Double line for as-built deletion
Roadway	Text for as-built posting

EXPIRATION DATE OF THE LICENSE: APRIL 30, 2010

**CRAIG H. SAKAMOTO**  
LICENSED PROFESSIONAL ENGINEER  
No. 5509-S  
HAWAII, U.S.A.

THIS WORK WAS PREPARED BY ME OR UNDER MY SUPERVISION.

STATE OF HAWAII  
DEPARTMENT OF TRANSPORTATION  
HIGHWAYS DIVISION

**MODIFICATIONS TO EXISTING CONCRETE WALLS**

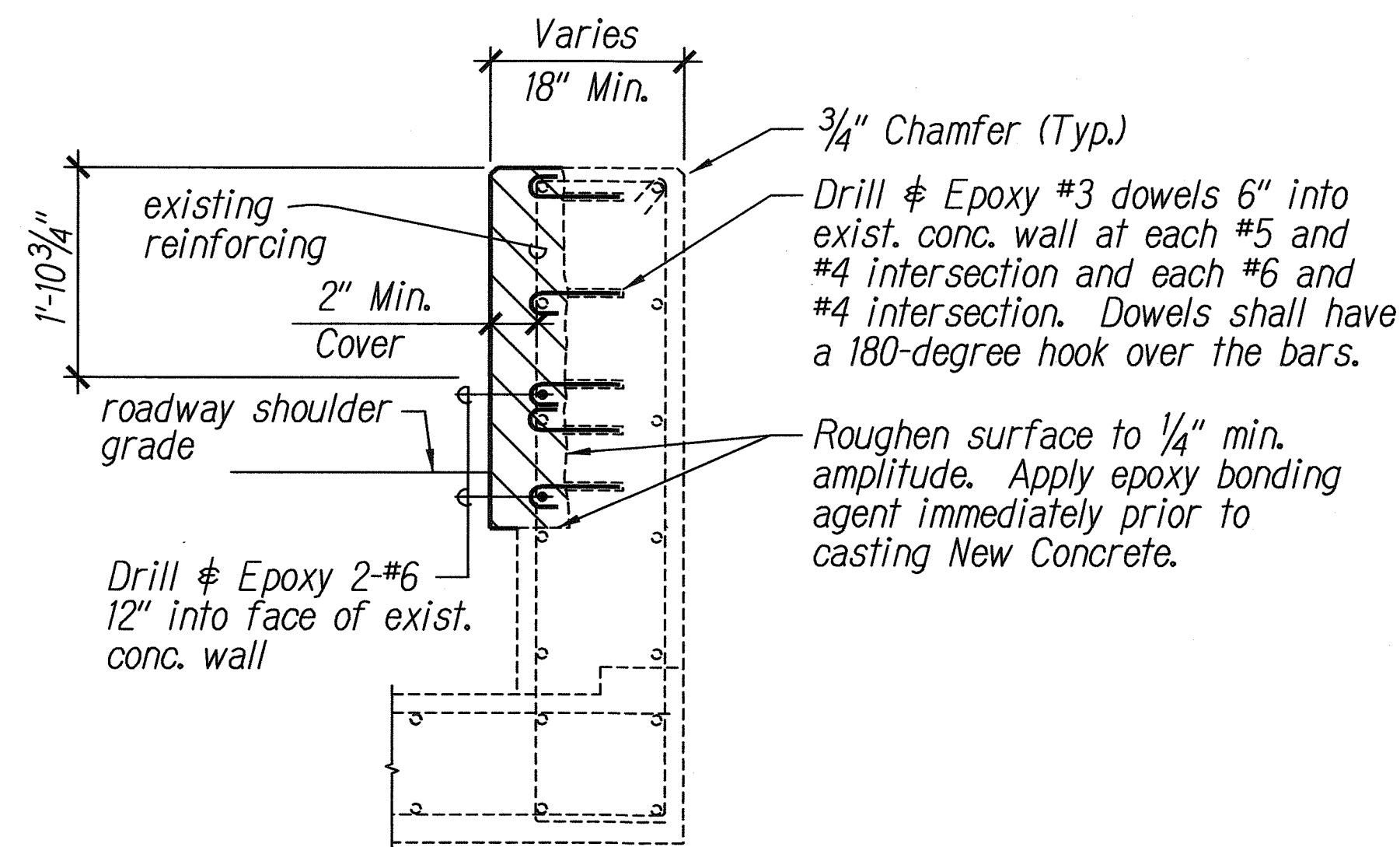
**KUAMOO ROAD RETAINING WALL IN THE VICINITY OF M.P. 1J**  
PROJECT NO. 580A-01-02

Scale: As Noted Date: September 2005

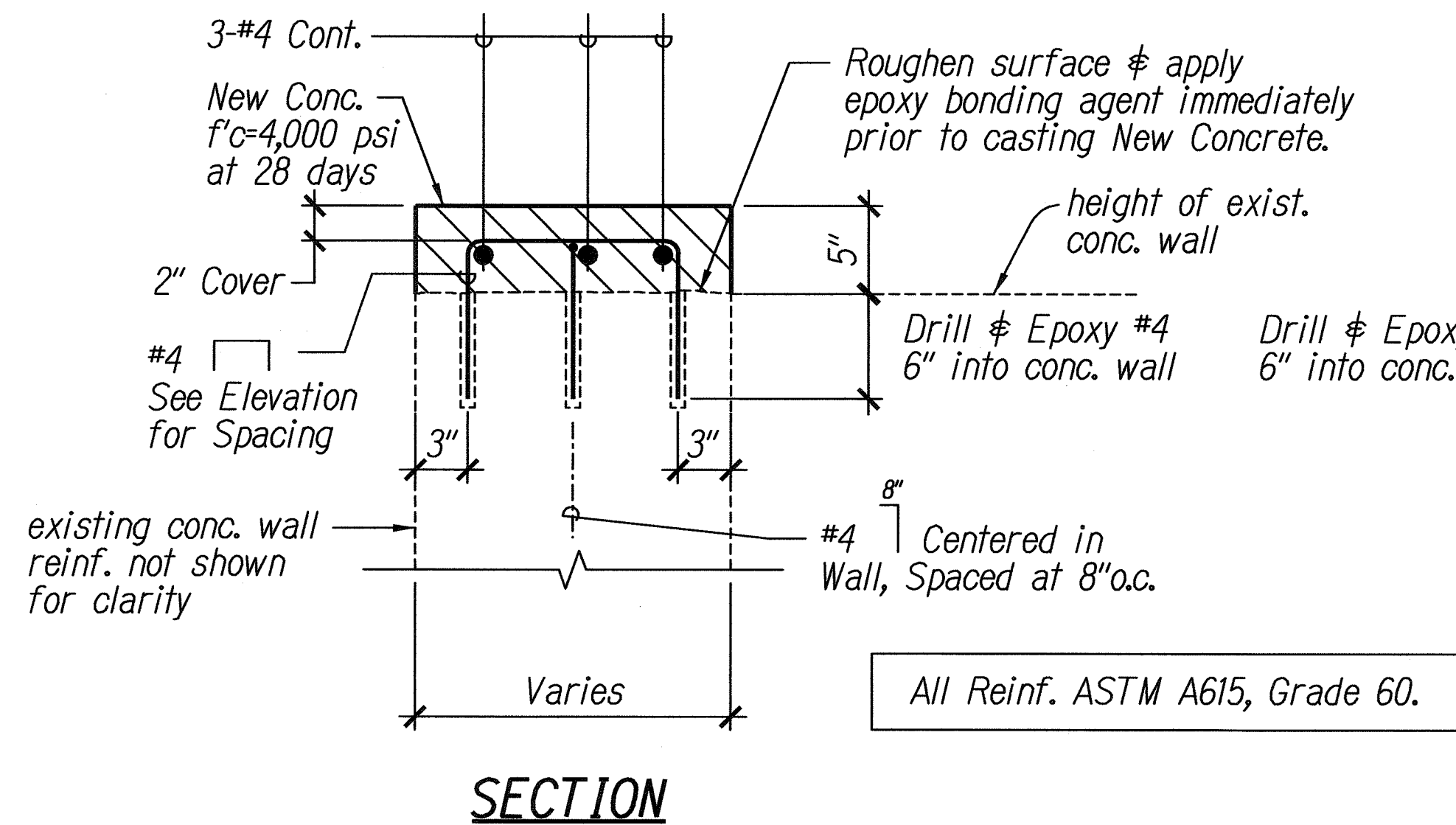
SHEET No. **S-8A** OF **8** SHEETS



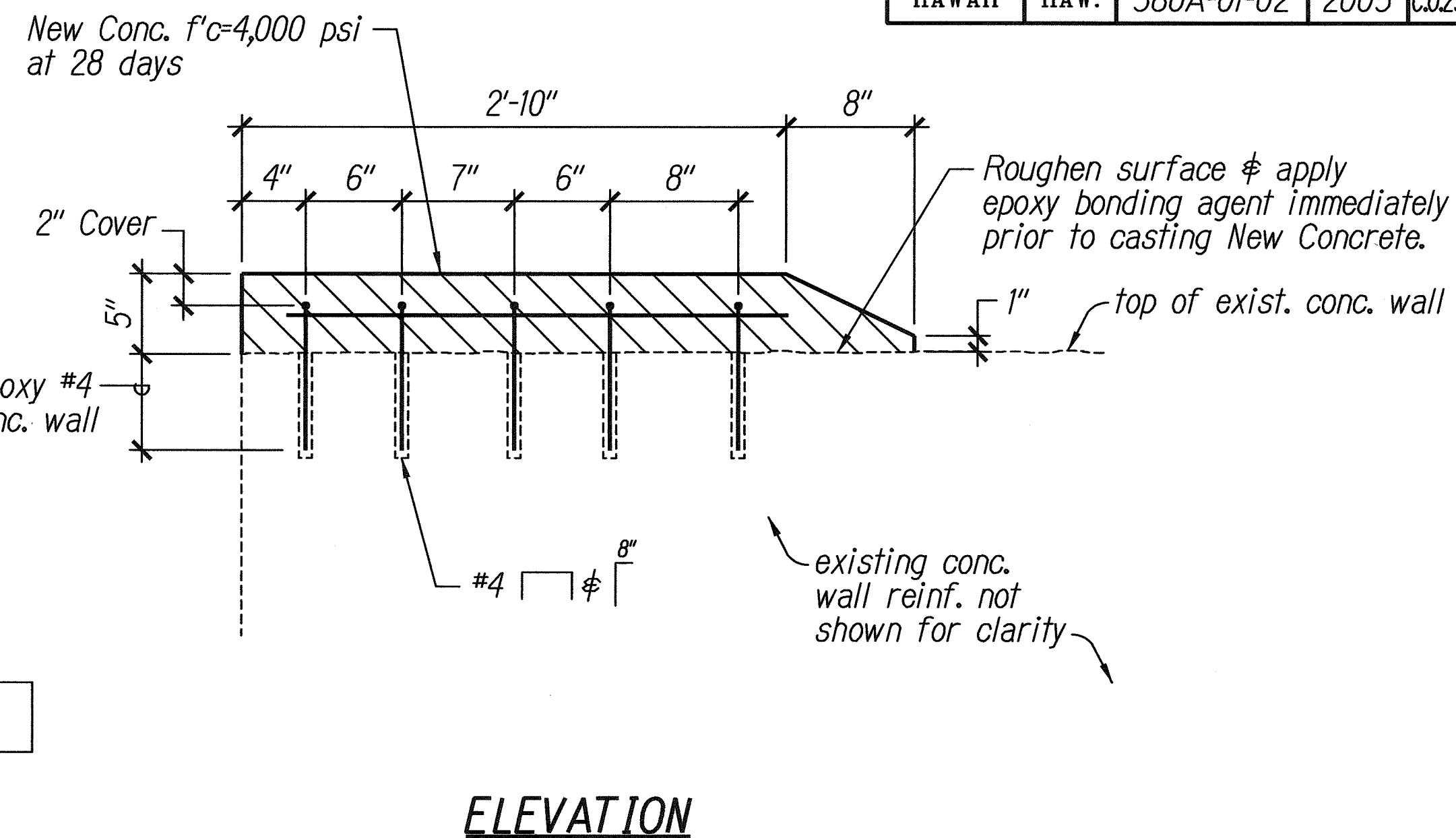
FED. ROAD DIST. NO.	STATE	FED. AID PROJ. NO.	FISCAL YEAR	SHEET NO.	TOTAL SHEETS
HAWAII	HAW.	580A-01-02	2005	C.025S-2	25



**A** SECTION OF WALL MODIFICATION  
S-2 | S-8B Scale: 3/4" = 1'-0"

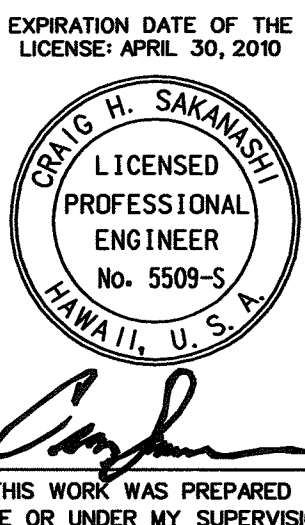


**B** TOPPING ADDITION AT WALL #1  
S-2 | S-8B Not to Scale



**ELEVATION**

LEGEND FOR AS-BUILT POSTINGS	
	Squiggly line for as-built deletion
	Double line for as-built deletion
Roadway	Text for as-built posting



STATE OF HAWAII  
DEPARTMENT OF TRANSPORTATION  
HIGHWAYS DIVISION

**MODIFICATIONS TO EXISTING CONCRETE WALLS**

**KUAMOO ROAD RETAINING WALL  
IN THE VICINITY OF M.P. 1J  
PROJECT NO. 580A-01-02**

Scale: As Noted Date: September 2005

SHEET No. **S-8B** OF **8** SHEETS