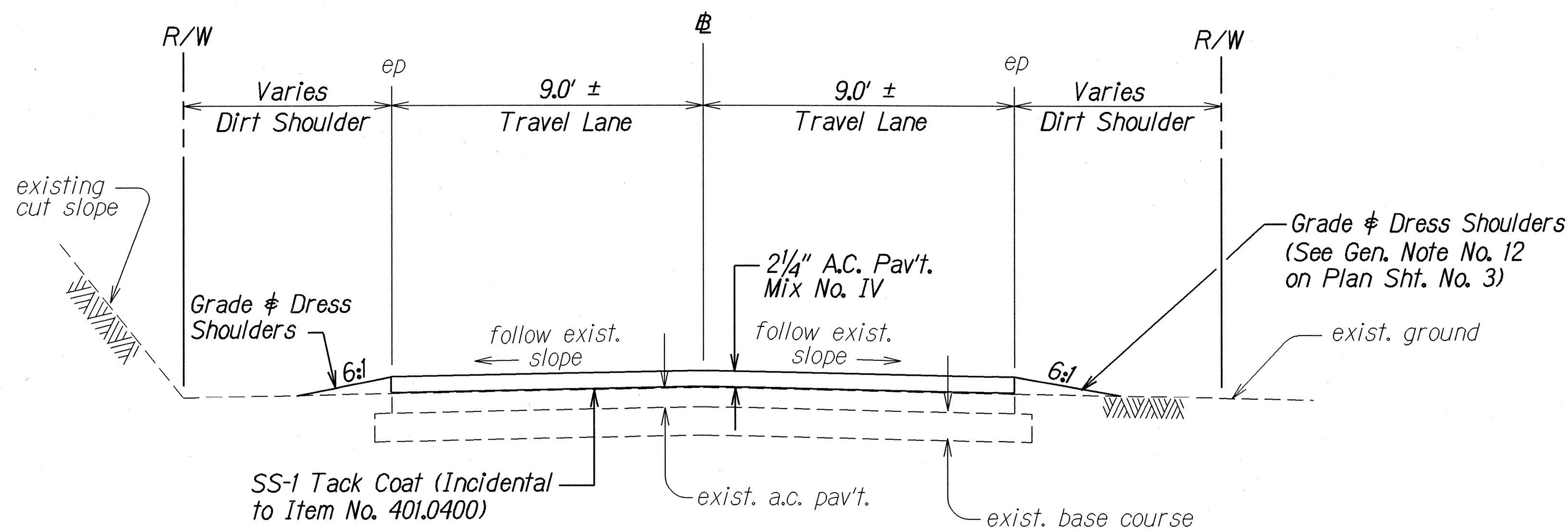
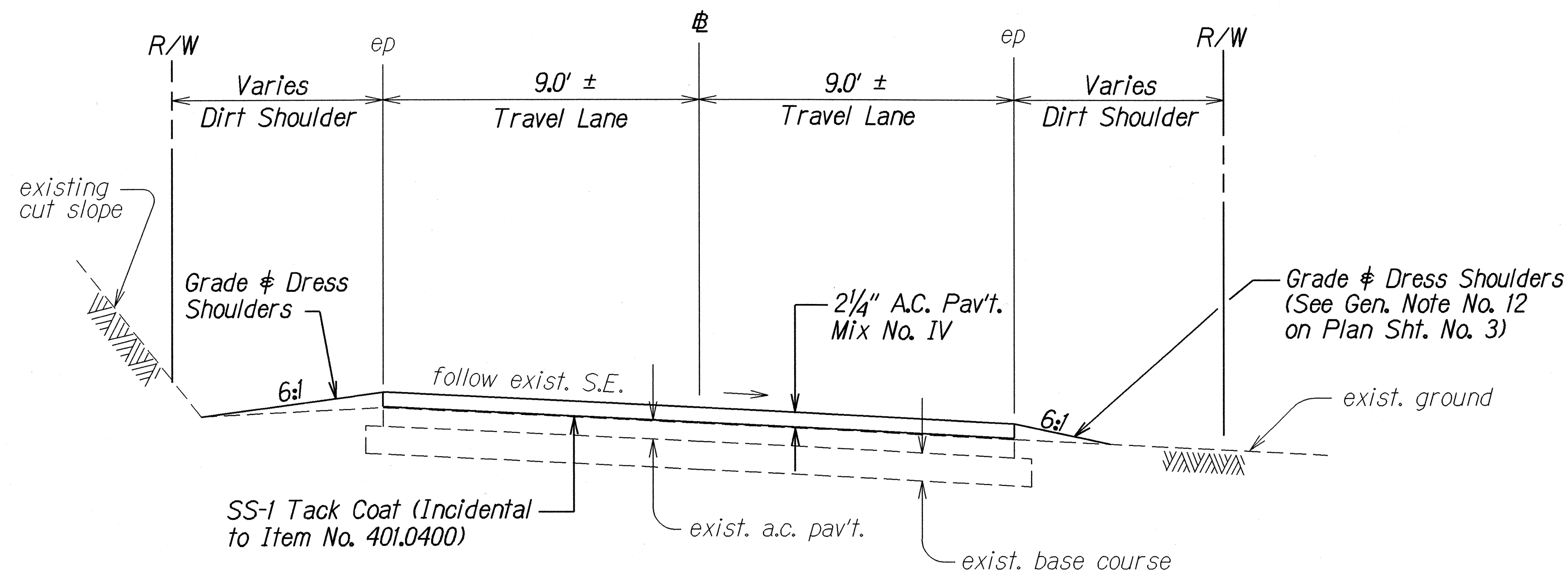


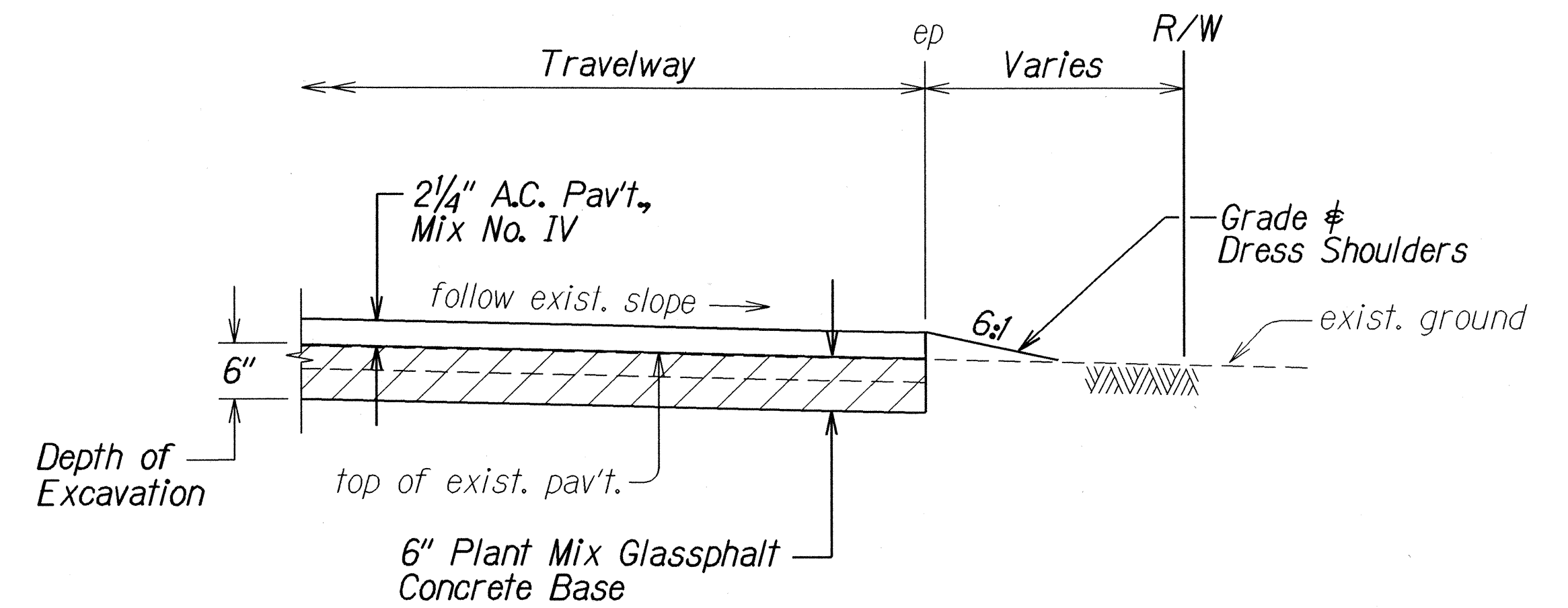
FED. ROAD DIST. NO.	STATE	PROJ. NO.	FISCAL YEAR	SHEET NO.	TOTAL SHEETS
HAWAII	HAW.	580A-01-01M	2002	6	20



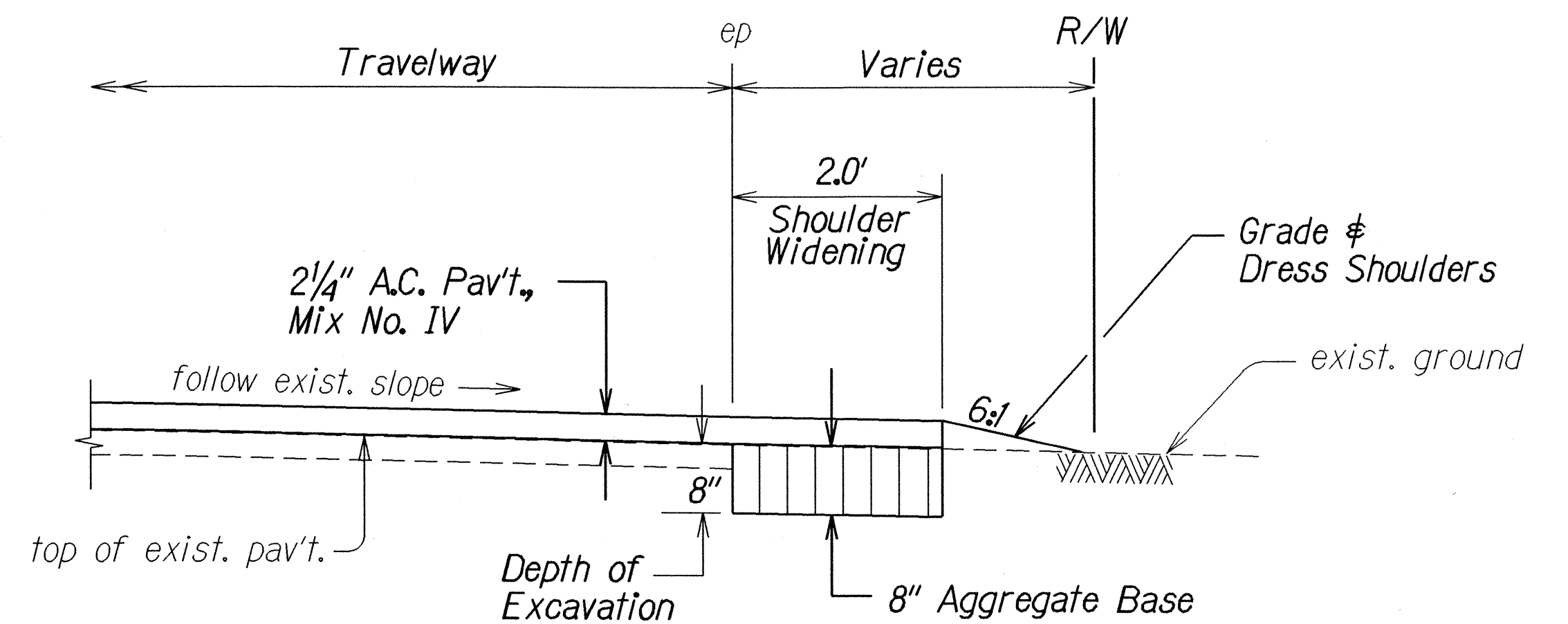
TANGENT SECTION
Scale: 3/8" = 1'-0"



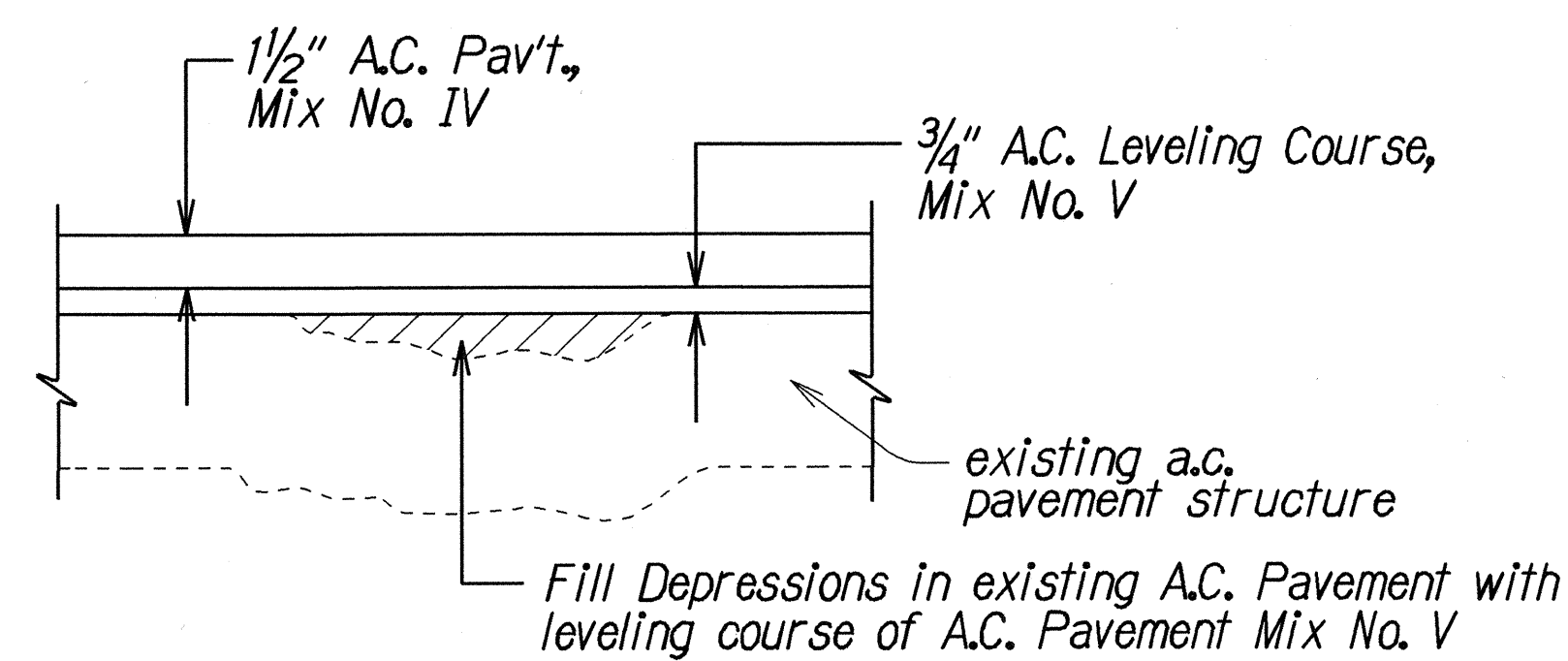
SUPERELEVATED SECTION
Scale: 3/8" = 1'-0"



A.C. PAVEMENT RECONSTRUCTION DETAIL
Not to Scale



SHOULDER CONSTRUCTION DETAIL
Not to Scale



LEVELING COURSE DETAIL
Not to Scale

STATE OF HAWAII
DEPARTMENT OF TRANSPORTATION
HIGHWAYS DIVISION

TYPICAL SECTIONS & DETAILS

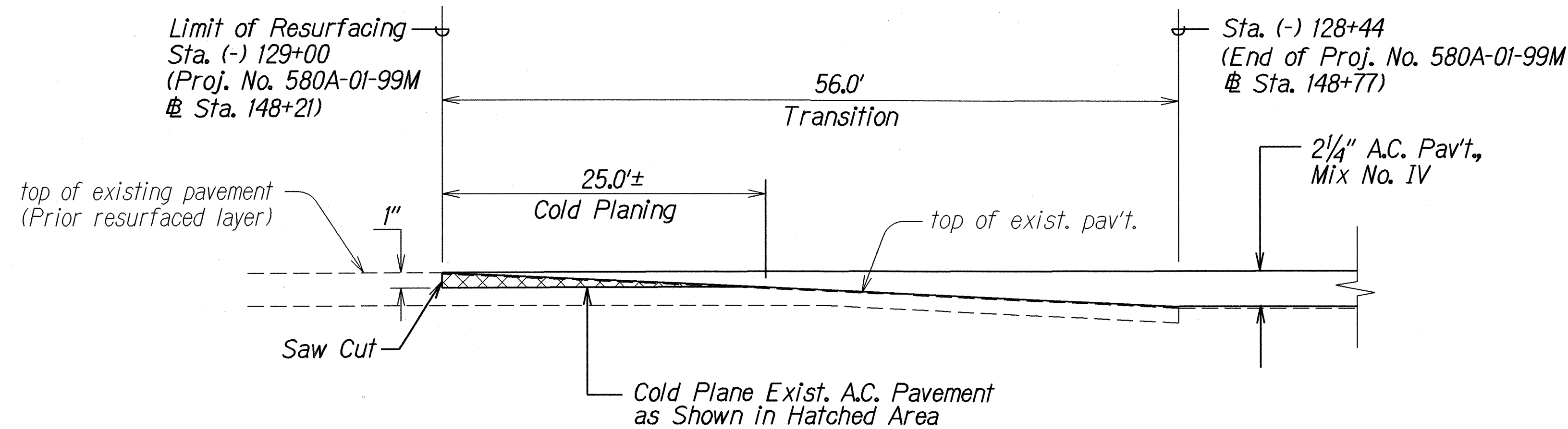
KUAMOO ROAD RESURFACING
Vicinity of U.H. Experimental Station
to Vicinity of Hawaiiiana Street
Project No. 580A-01-01M

Scale : As Shown Date: June 2001

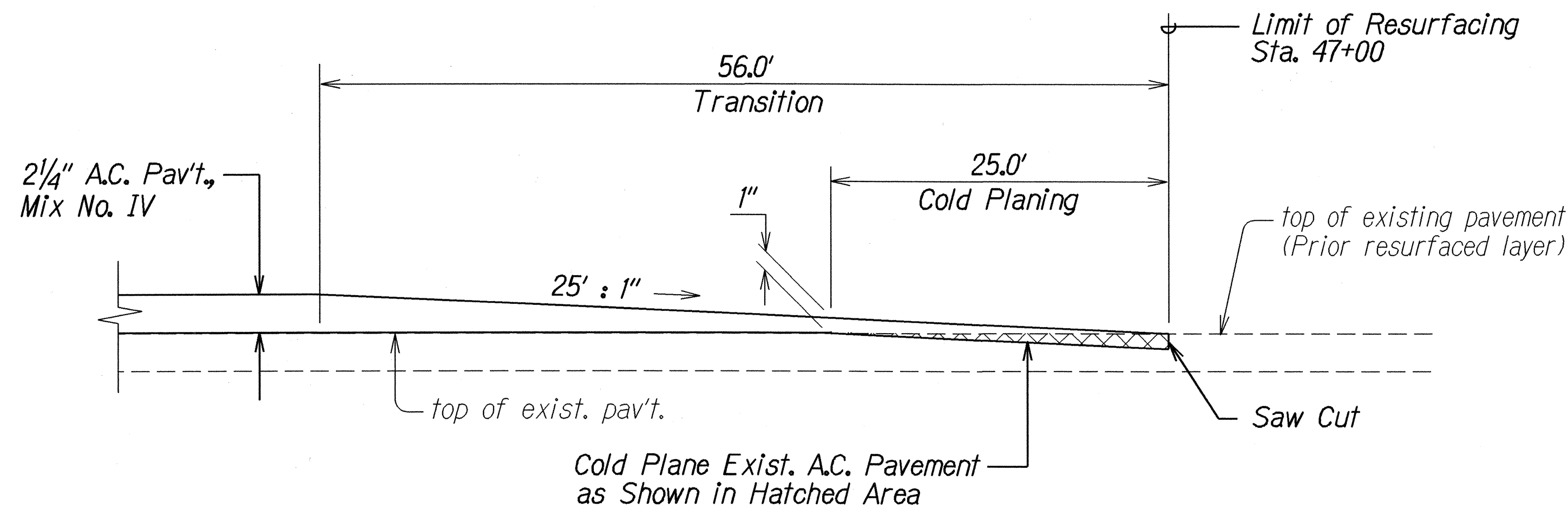
SHEET No. 1 OF 3 SHEETS

DATE	6-18-01
DESIGNED BY	EL 4000
CHECKED BY	EL 4000
ORIGINAL PLAN	YES
NOTE BOOK	YES
DESIGNED BY	EL 4000
CHECKED BY	EL 4000
ORIGINAL PLAN	YES
NOTE BOOK	YES

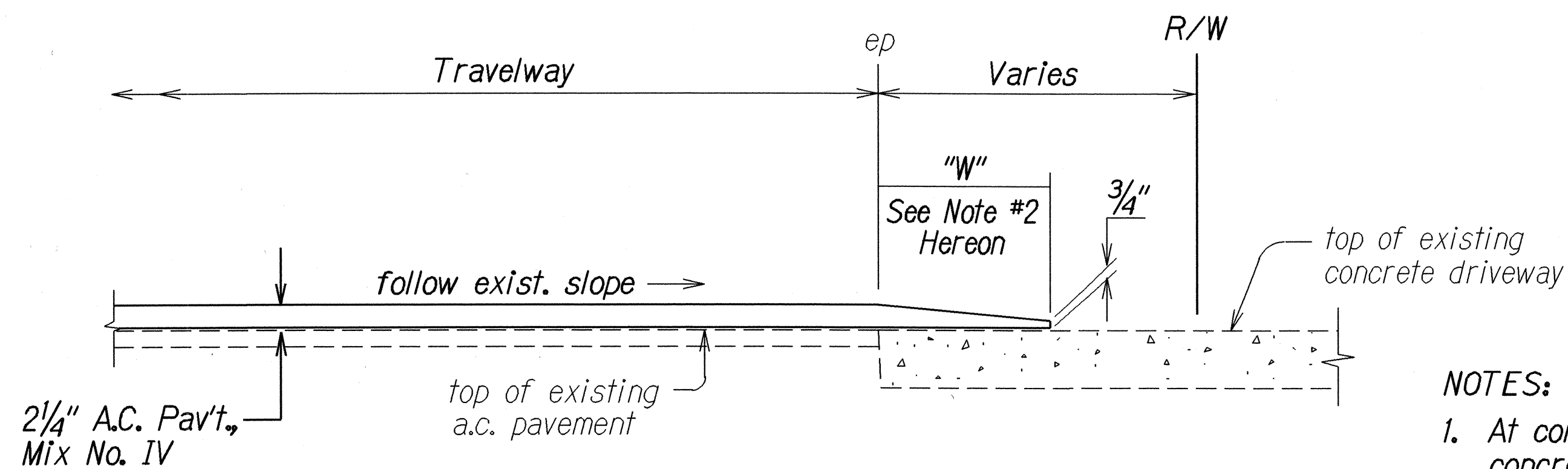
FED. ROAD DIST. NO.	STATE	PROJ. NO.	FISCAL YEAR	SHEET NO.	TOTAL SHEETS
HAWAII	HAW.	580A-01-01M	2002	7	20



COLD PLANED TRANSITION AT BEGINNING OF PROJECT
Not to Scale



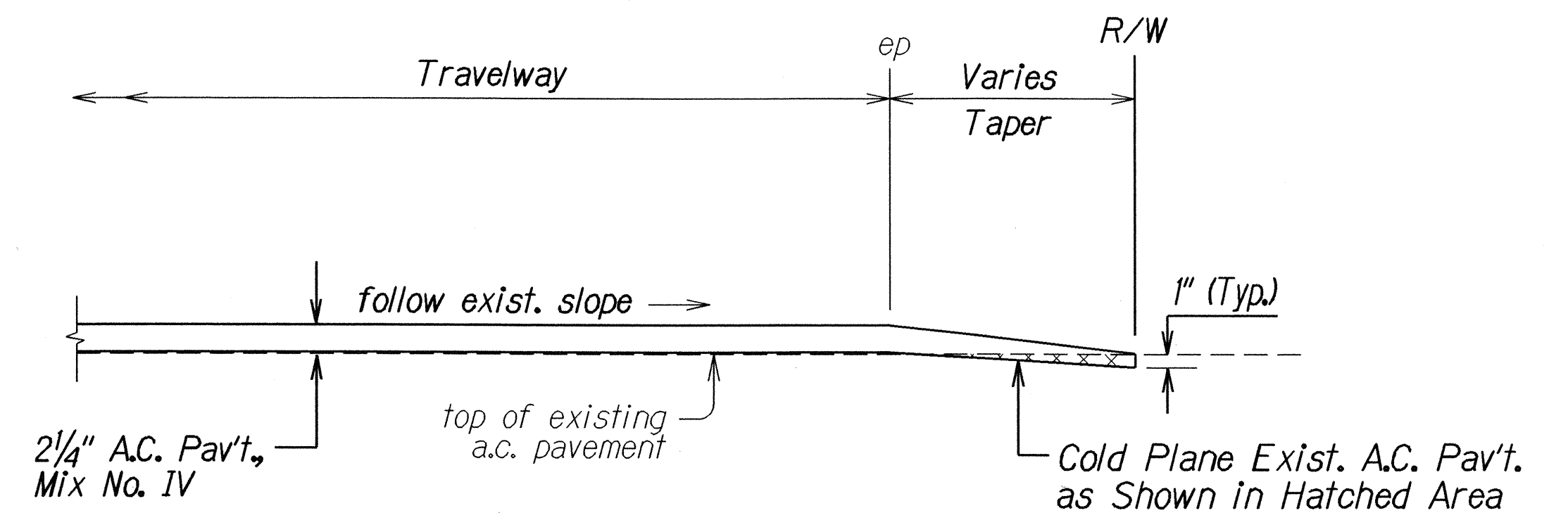
COLD PLANED TRANSITION AT END OF PROJECT
Not to Scale



RESURFACING AT CONCRETE DRIVEWAYS
Not to Scale

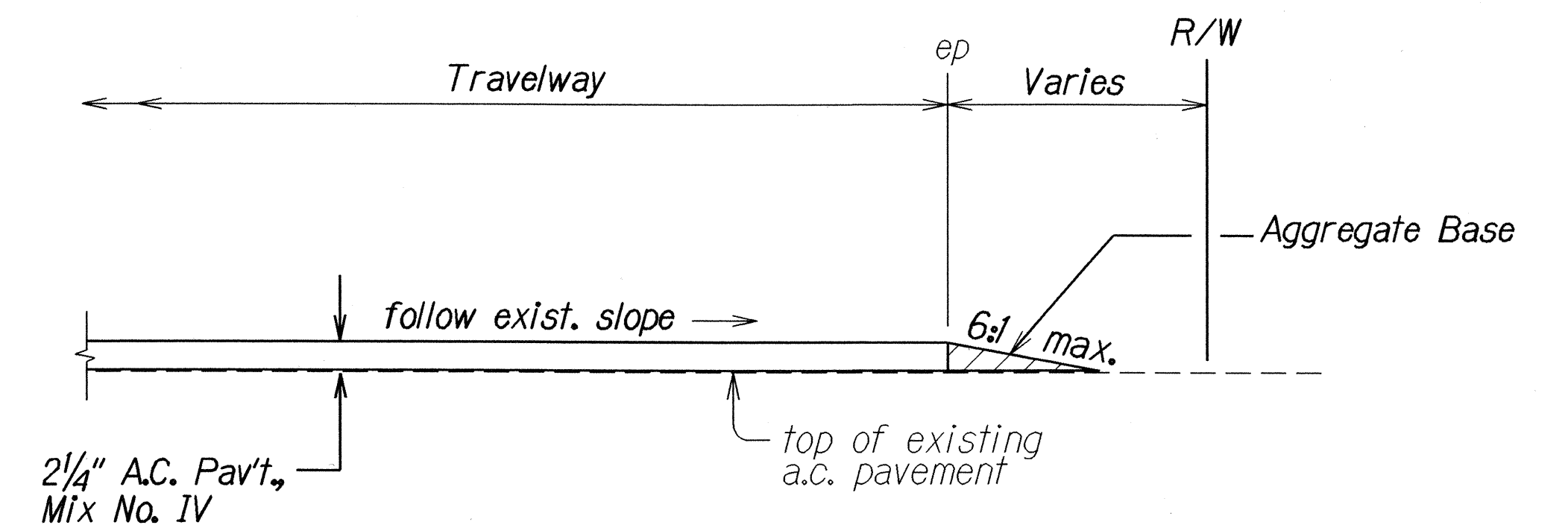
NOTES:

- At concrete driveways where there is existing a.c. pavement over concrete, remove or cold plane the existing a.c. pavement prior to resurfacing. Removing or cold planing and disposing of a.c. pavement shall be incidental to the various contract items.
- W = 4.0' at Sta. 4+75± o/s Rt.
W = 3.0' at all other concrete driveways.



RESURFACING AT PAVED SIDEROADS
Not to Scale

NOTE: Cold planing on the north leg of Kaholalele Road shall be made outside the State R/W as shown on Plan Sht. No. 12.



RESURFACING AT UNPAVED SIDEROADS & DRIVEWAYS
Not to Scale

NOTE: Aggregate Base Course for unpaved sideroads and driveways shall be paid for under contract Item No. 304.1110 - Aggregate Base.

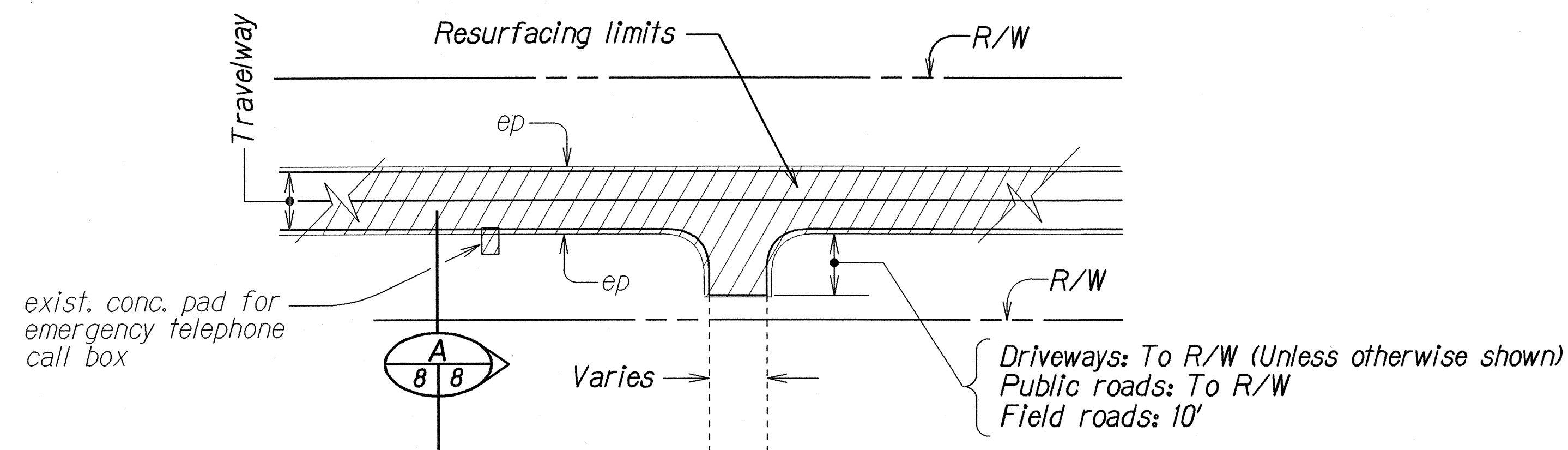
DATE	6/18/01
SURVEY PLOTTED BY	R. A. 4000
PLAN	
NOTE BOOK	
REVISION	
CHECKED BY	
APPROVED BY	

STATE OF HAWAII
DEPARTMENT OF TRANSPORTATION
HIGHWAYS DIVISION

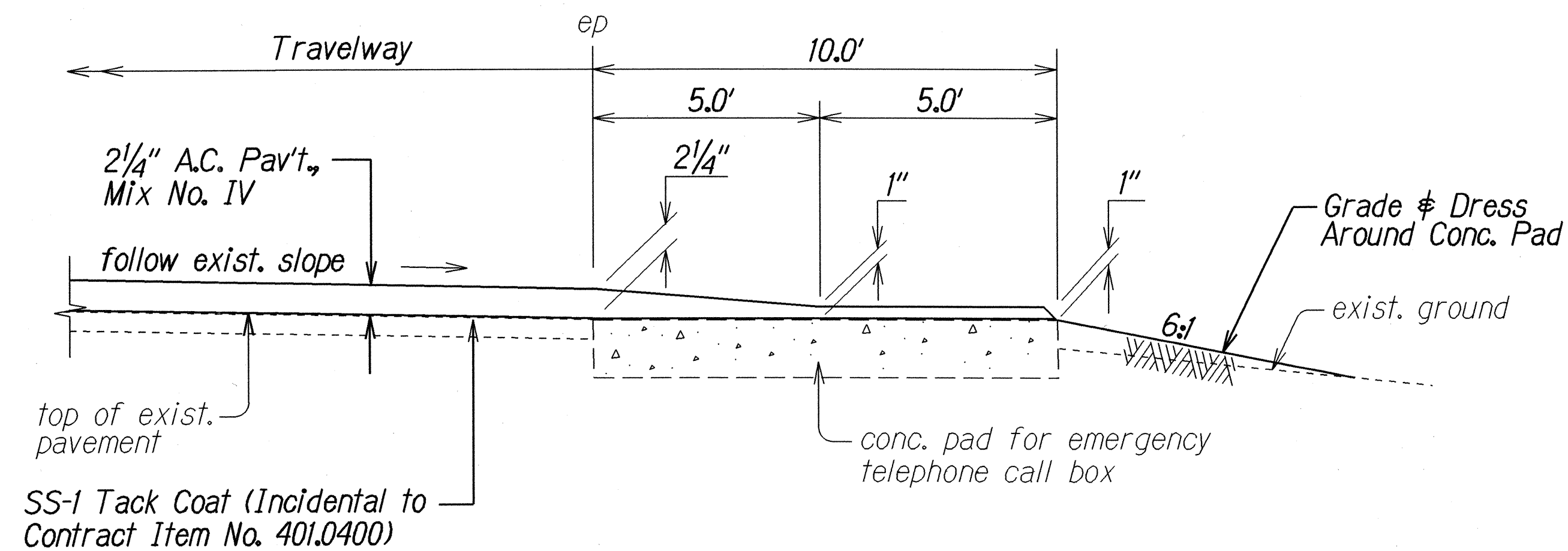
TYPICAL SECTIONS & DETAILS
KUAMOO ROAD RESURFACING
Vicinity of U.H. Experimental Station
to Vicinity of Hawaiiana Street
Project No. 580A-01-01M
Scale: As Shown Date: June 2001

SHEET No. 2 OF 3 SHEETS

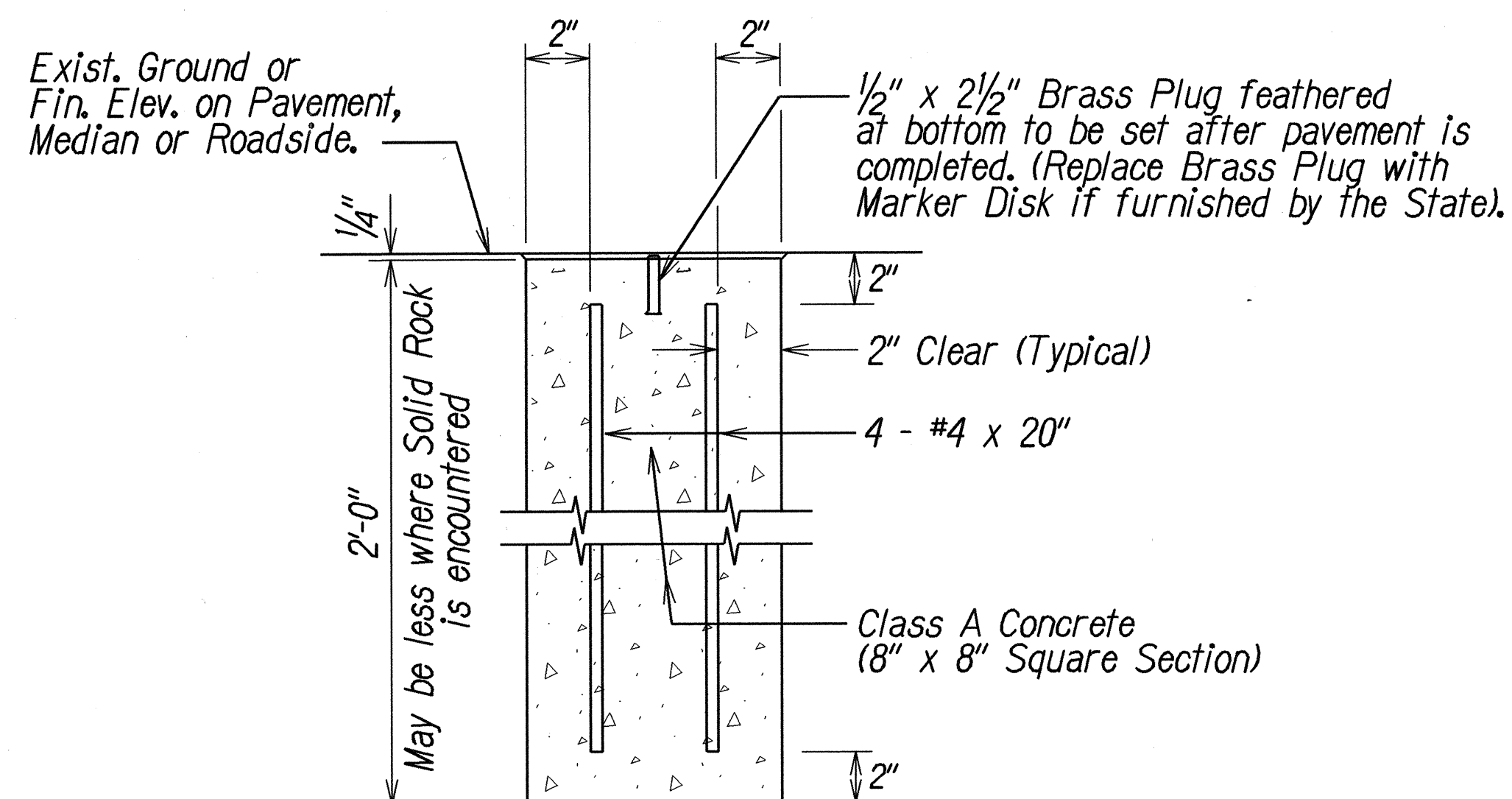
FED. ROAD DIST. NO.	STATE	PROJ. NO.	FISCAL YEAR	SHEET NO.	TOTAL SHEETS
HAWAII	HAW.	580A-01-01M	2002	8	20



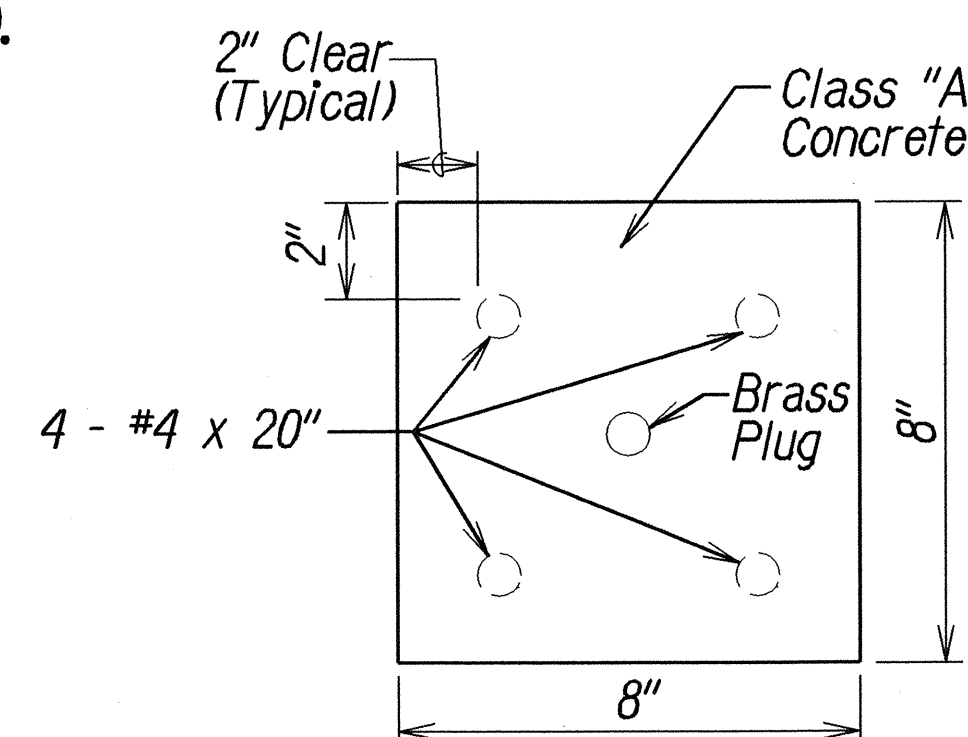
PLAN
TYPICAL RESURFACING LIMITS
Not to Scale



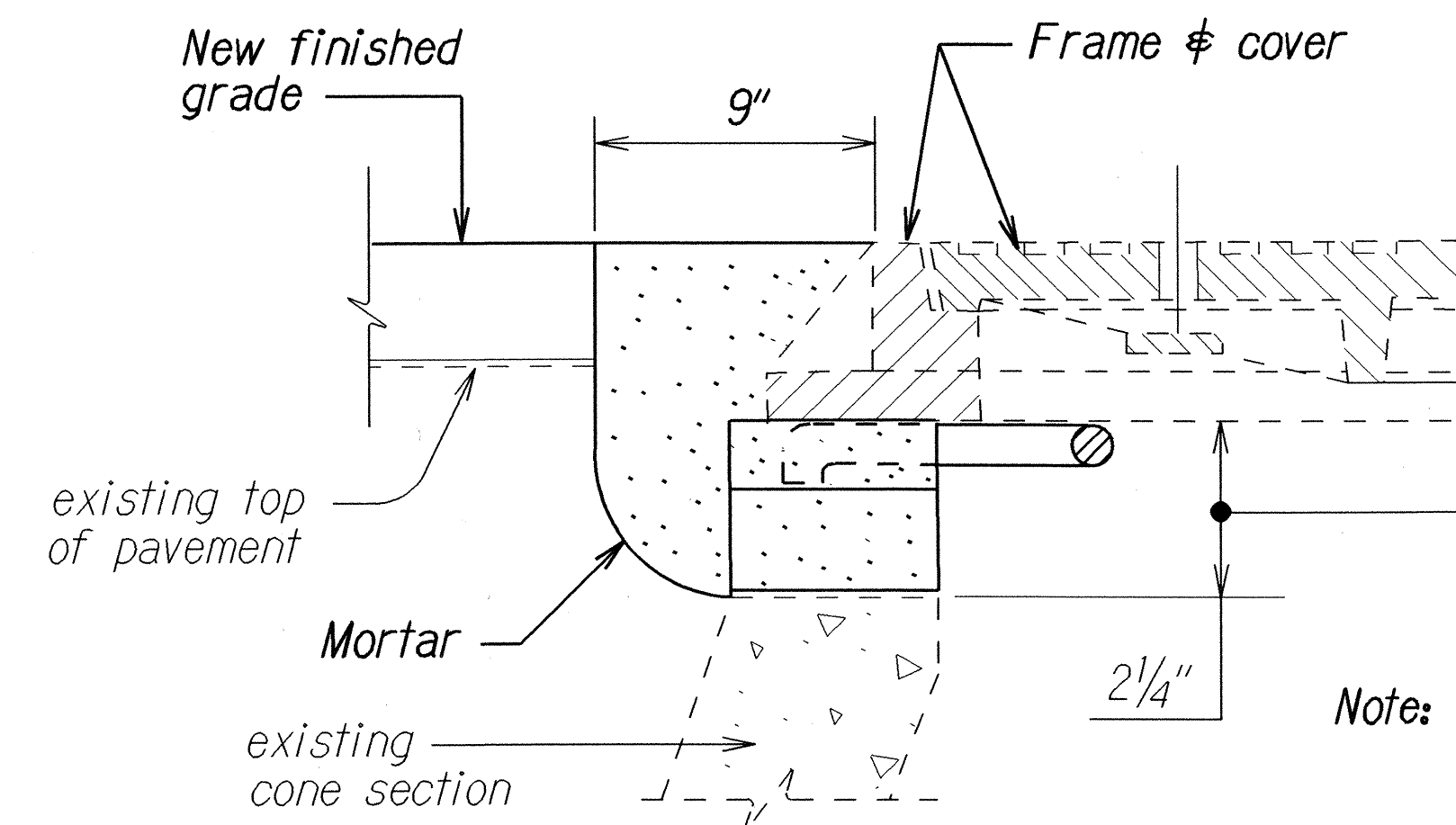
SECTION
Not to Scale



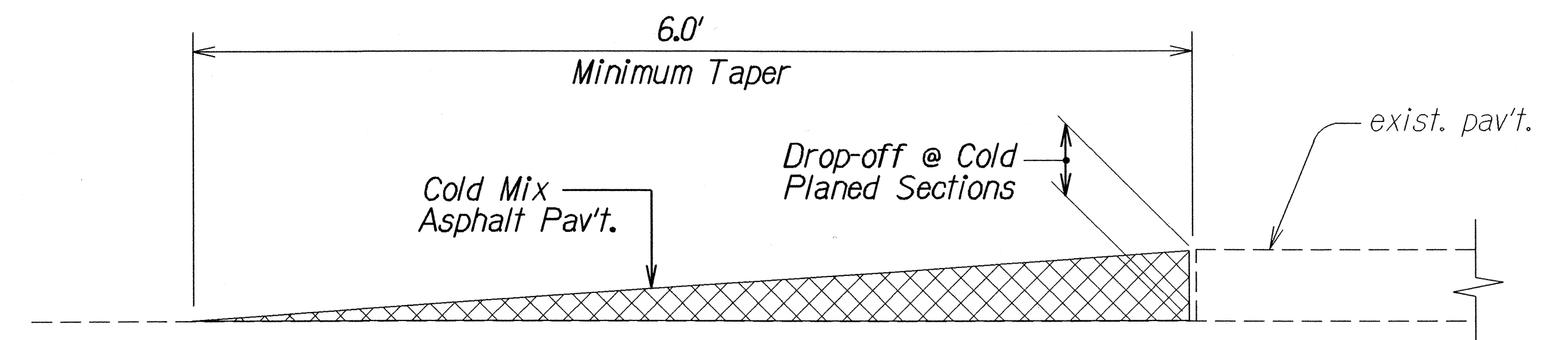
DETAIL FOR CENTERLINE & REFERENCE SURVEY MONUMENT
Not to Scale



PLAN VIEW



TYPICAL MANHOLE FRAME & COVER ADJUSTMENT
(SEWER & STORM DRAIN M.H.)
Not to Scale



TEMPORARY TRANSITION AT COLD PLANED AREAS
Not to Scale

Note: Contractor shall construct temporary pavement taper to prevent sharp pavement drop-offs at all cold planed sections. Prior to final A.C. Mix No. IV placement, temporary pavement taper shall be removed. This work shall be incidental to contract Item No. 652.1000 - Cold Planing.

Note: This detail is applicable to the installation of new centerline and reference survey monument only. Refer to Std. Plan D-06 for adjusting existing centerline and reference survey monument.

STATE OF HAWAII
DEPARTMENT OF TRANSPORTATION
HIGHWAYS DIVISION

TYPICAL SECTIONS & DETAILS

KUAMOO ROAD RESURFACING
Vicinity of U.H. Experimental Station
to Vicinity of Hawaiiana Street
Project No. 580A-01-01M

Scale: As Shown

Date: June 2001

SHEET No. 3 OF 3 SHEETS