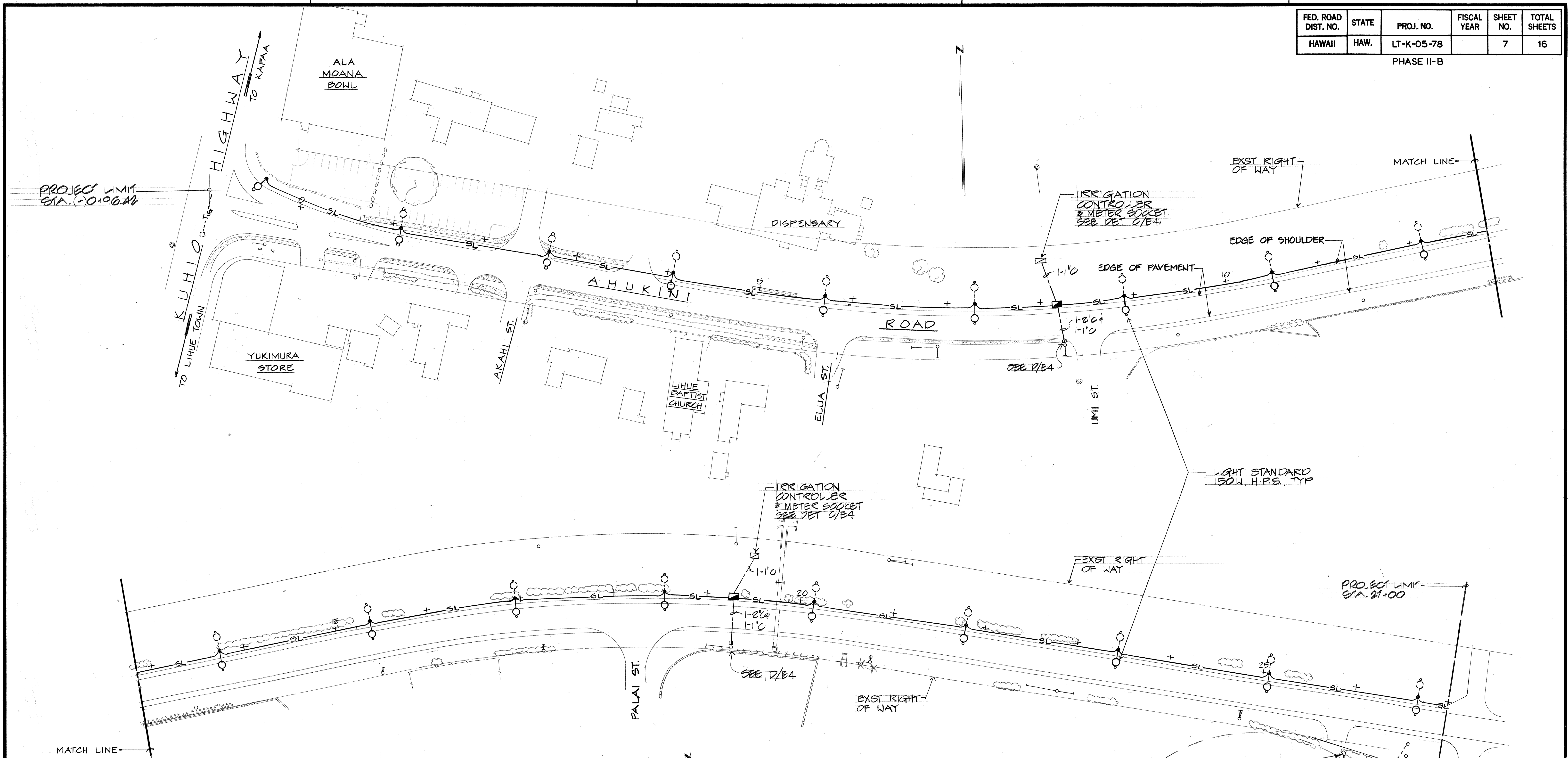


FED. ROAD DIST. NO.	STATE	PROJ. NO.	FISCAL YEAR	SHEET NO.	TOTAL SHEETS
HAWAII	HAW.	LT-K-05-78		7	16

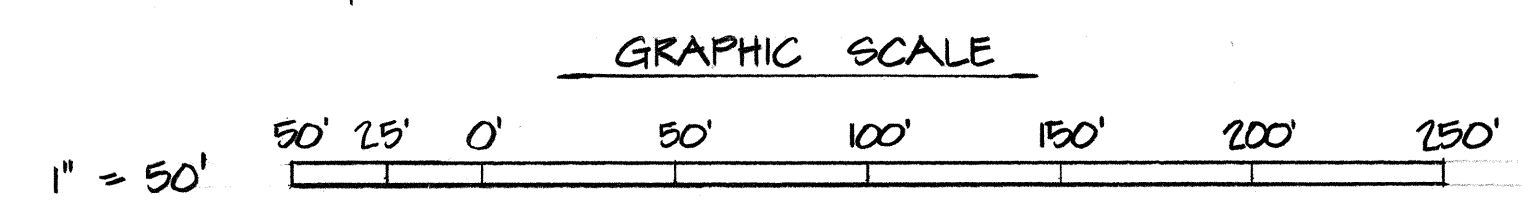
PHASE II-B



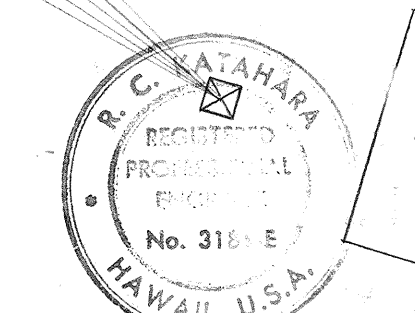
SURVEY FLOTTED BY: \_\_\_\_\_ DATE: \_\_\_\_\_  
 DRAWN BY: \_\_\_\_\_  
 DESIGNED BY: \_\_\_\_\_  
 QUANTITIES BY: \_\_\_\_\_  
 CHECKED BY: \_\_\_\_\_  
 ORIGINAL PLAN: \_\_\_\_\_  
 NOTE BOOK: \_\_\_\_\_  
 No. \_\_\_\_\_

**ELECTRICAL SYMBOLS**

	STREET LIGHT STANDARD, 150W HIGH PRESSURE SODIUM LAMP, SEE DETAIL A/E3 (-O- DENOTES FUTURE LUMINAIRE)
	STREET LIGHT CONDUIT, WIRES BY RECO.
	STREET LIGHT PULLBOX
	IRRIGATION CONTROLLER & METER SOCKET
	EXISTING STREET LIGHT
	EXISTING PULLBOX
	EXISTING CONDUIT
	UTILITY POLE (ELEC & TEL) & GUY WIRES



APPROX. EDGE OF COPPER COUNTERPOISE SET FOUR DEGREES APART.



STATE OF HAWAII  
 DEPARTMENT OF TRANSPORTATION  
 HIGHWAYS DIVISION

**SYMBOLS & LIGHTING PLAN**

LIHUE AIRPORT  
 GATEWAY BEAUTIFICATION  
 PROJECT NO. LT-K-05-78 PHASE II-B  
 SCALE: 1"=50' DATE: \_\_\_\_\_

SHEET NO. E-1 OF 2 SHEETS