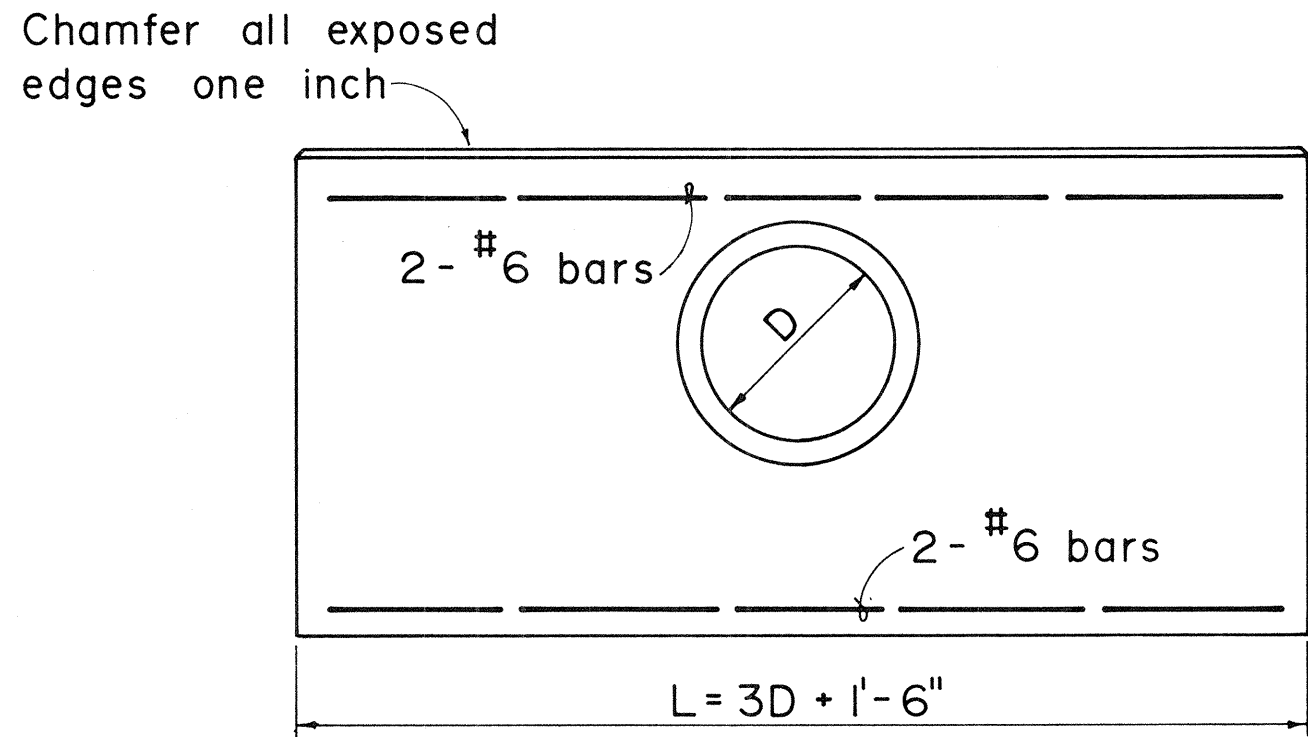
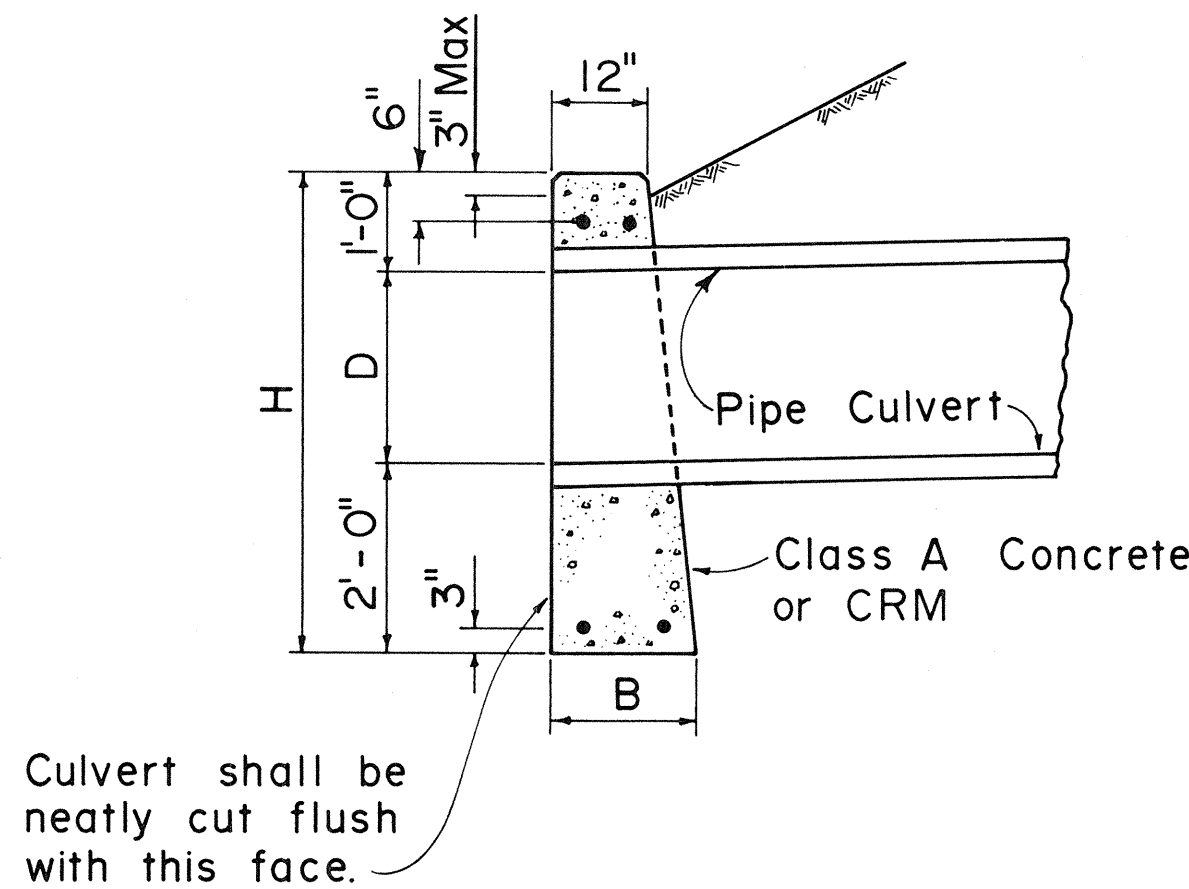


FED. ROAD DIST. NO.	STATE	PROJ. NO.	FISCAL YEAR	SHEET NO.	TOTAL SHEETS
HAWAII	HAW.	570A-01-82	1982	7	7



ELEVATION



SECTION

DATA FOR CONC. HDWL.			
D	B	L	H
18"	1'-6"	6'-0"	4'-6"
24"	1'-6"	7'-6"	5'-0"
30"	2'-0"	9'-0"	5'-6"
36"	2'-0"	10'-6"	6'-0"
42"	2'-6"	12'-0"	6'-6"
48"	2'-6"	13'-6"	7'-0"

DATA FOR CRM HDWL.			
D	B	L	H
18"	1'-9"	6'-0"	4'-6"
24"	2'-0"	7'-6"	5'-0"
30"	2'-3"	9'-0"	5'-6"
36"	2'-6"	10'-6"	6'-0"

CONCRETE OR CRM HEADWALL

APPROVAL RECOMMENDED:
T. Takano 6-19-79
 HYDRAULIC DESIGN ENGINEER DATE

APPROVED:
Harold Zaleishi 6-22-79
 ASSISTANT CHIEF, ENGINEERING DATE

NO.	REVISION	APPROVED BY	DATE
1.	Supersedes Sht. DH 10 approved 12-17-69	H.T.	6/22/79
2.	Change Class of concrete	H.T.	12/4/80

STATE OF HAWAII
DEPARTMENT OF TRANSPORTATION
HIGHWAYS DIVISION

STANDARD DETAILS
CONCRETE OR CEMENT
RUBBLE MASONRY HEADWALLS

Not To Scale
Date: June 1979

ORIGINAL PLAN	SURVEY PLOTTED BY	DATE
	DRAWN BY	
	TRACED BY	
	DESIGNED BY	
NOTE BOOK No.	CHECKED BY	