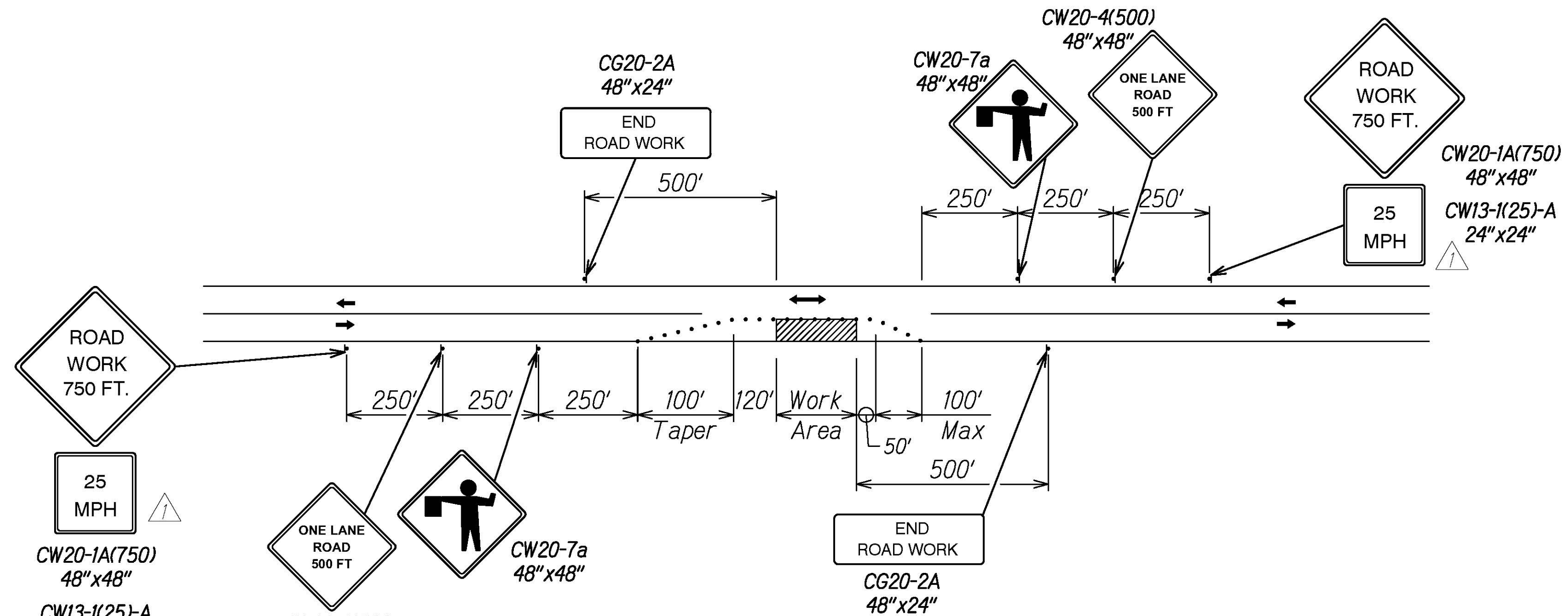


| FED. ROAD DIST. NO. | STATE | FED. AID PROJ. NO. | FISCAL YEAR | SHEET NO. | TOTAL SHEETS |
|---------------------|-------|--------------------|-------------|-----------|--------------|
| HAWAII | HAW. | STP-0560(017) | 2023 | ADD.92 | 92 |

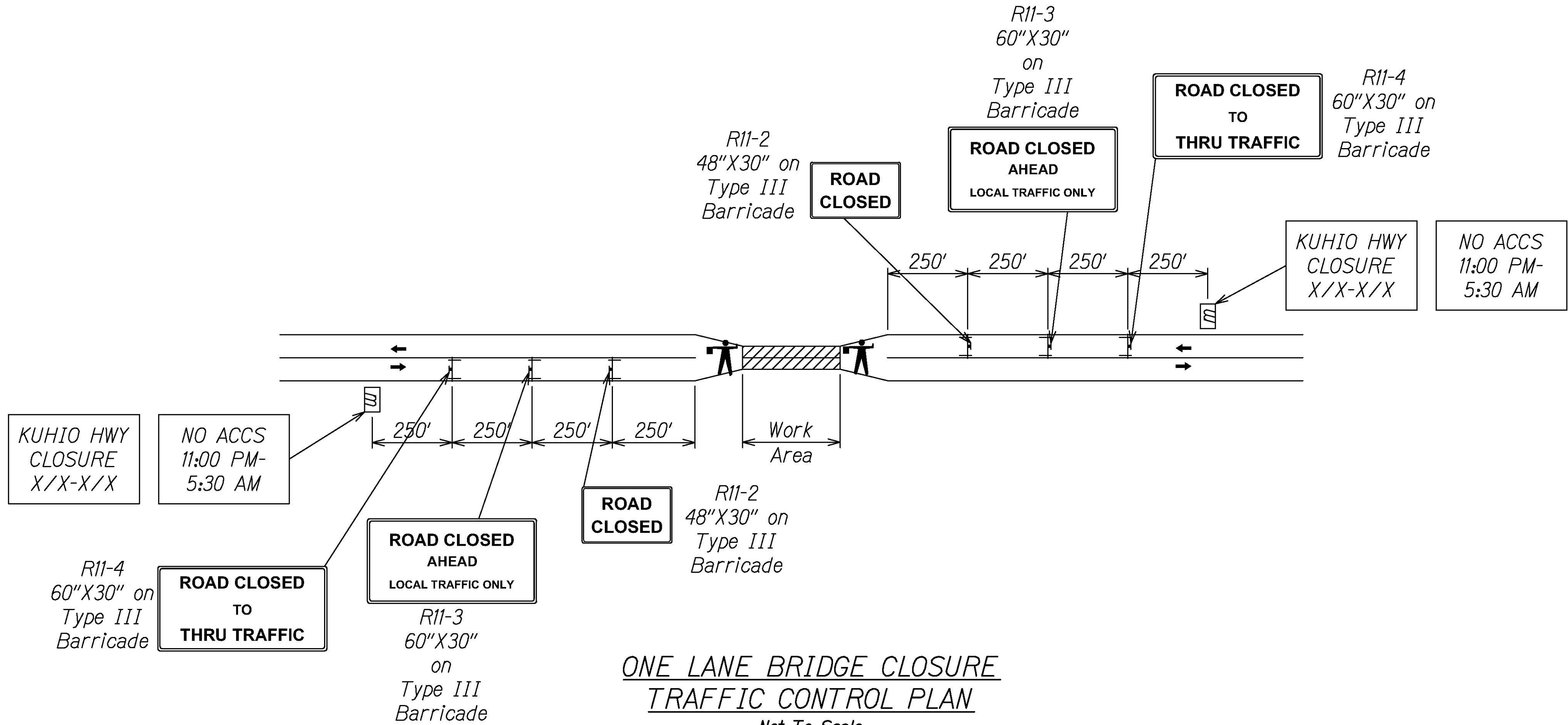
LEGEND

- Sign
- Cone Or Delineator
- Direction Of Traffic
- ▨ Work Area
- ▭ Portable Message Board
- ⊥ Type III Barricade
- 🚧 Flagman



HIGHWAY FULL LANE CLOSURE
TRAFFIC CONTROL PLAN

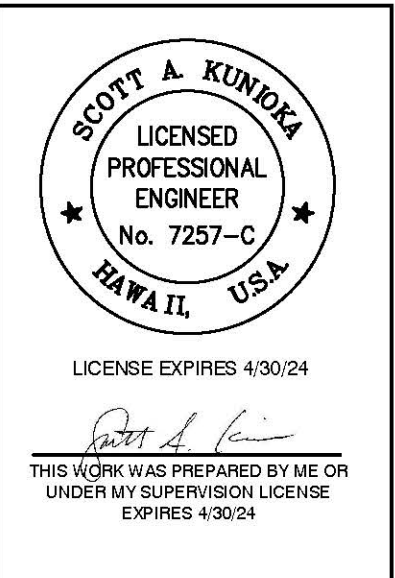
Not To Scale



ONE LANE BRIDGE CLOSURE
TRAFFIC CONTROL PLAN

Not To Scale

| | |
|-------------------|------|
| SURVEY PLOTTED BY | DATE |
| DRAWN BY | |
| DESIGNED BY | |
| QUANTITIES BY | |
| CHECKED BY | |
| ORIGINAL PLAN | |
| NOTE BOOK | |
| NO. | |



STATE OF HAWAII
DEPARTMENT OF TRANSPORTATION
HIGHWAYS DIVISION
**TEMPORARY TRAFFIC
CONTROL PLAN & NOTES**
KUHIOW HIGHWAY RESURFACING
AND SAFETY IMPROVEMENTS
Route 560 M.P. 0.0 to M.P. 4.5
Fed. Aid Proj. No. STP-0560(017)
Scale: Not to Scale Date: July, 2023

| | |
|----------|----------------------------|
| 10/12/23 | △ - Revised Advisory Speed |
| DATE | REVISION |

SHEET No. TC-3A OF 3 SHEETS

ADD. 92