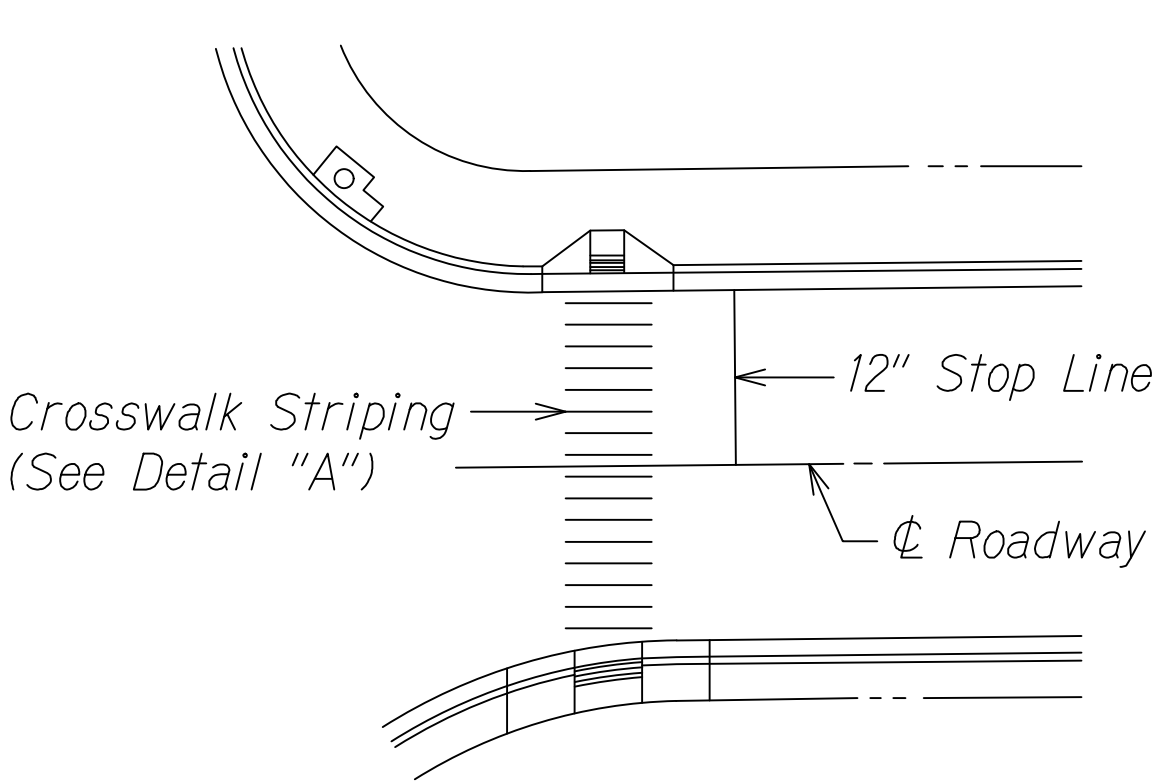
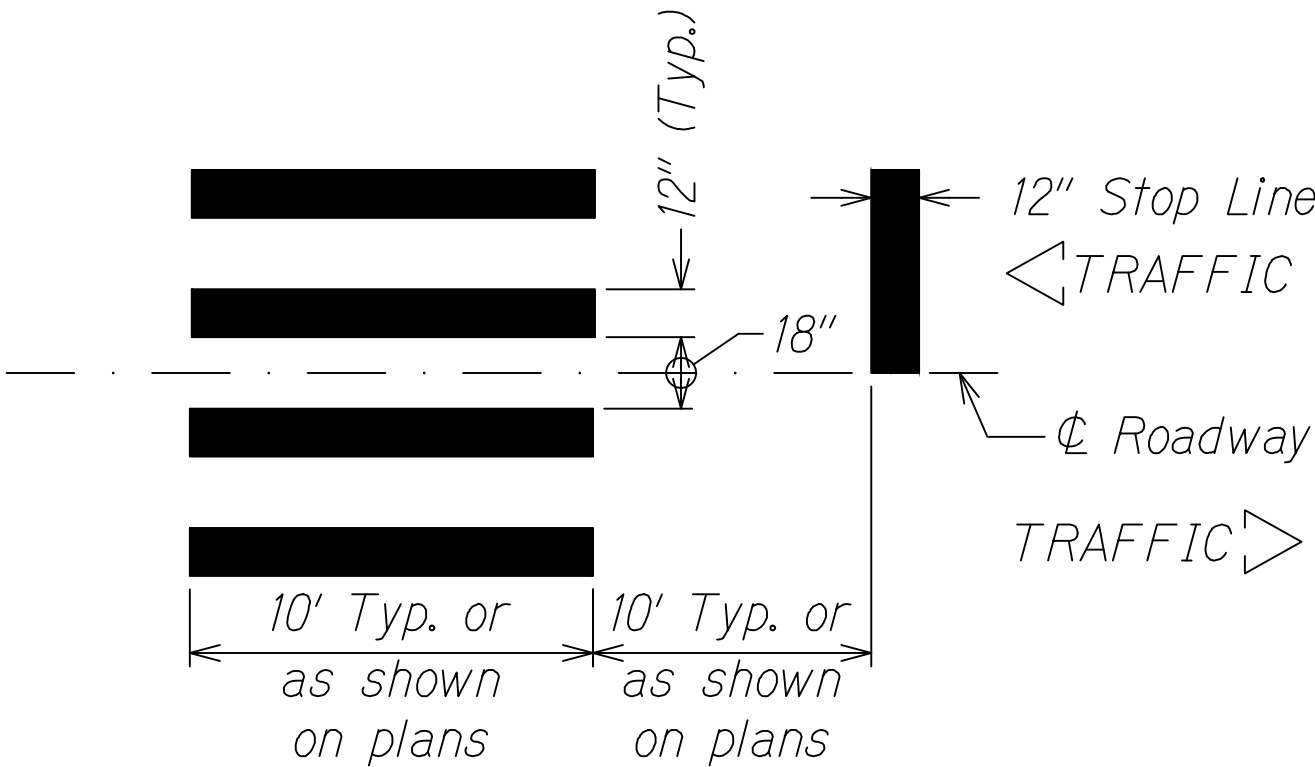


FED. ROAD DIST. NO.	STATE	FED. AID PROJ. NO.	FISCAL YEAR	SHEET NO.	TOTAL SHEETS
HAWAII	HAW.	STP-0560(017)	2023	28	92

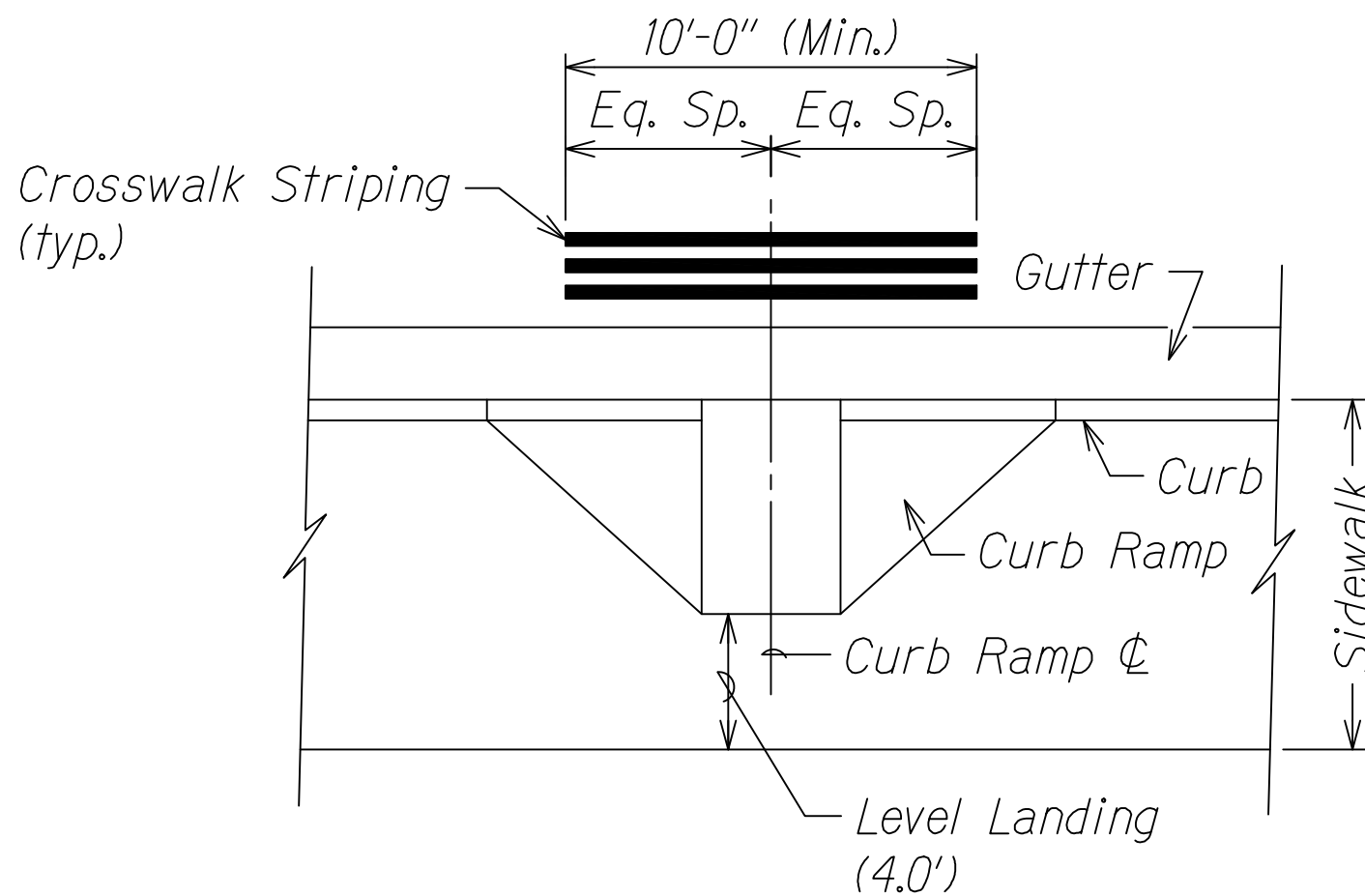


PLAN  
Not to Scale

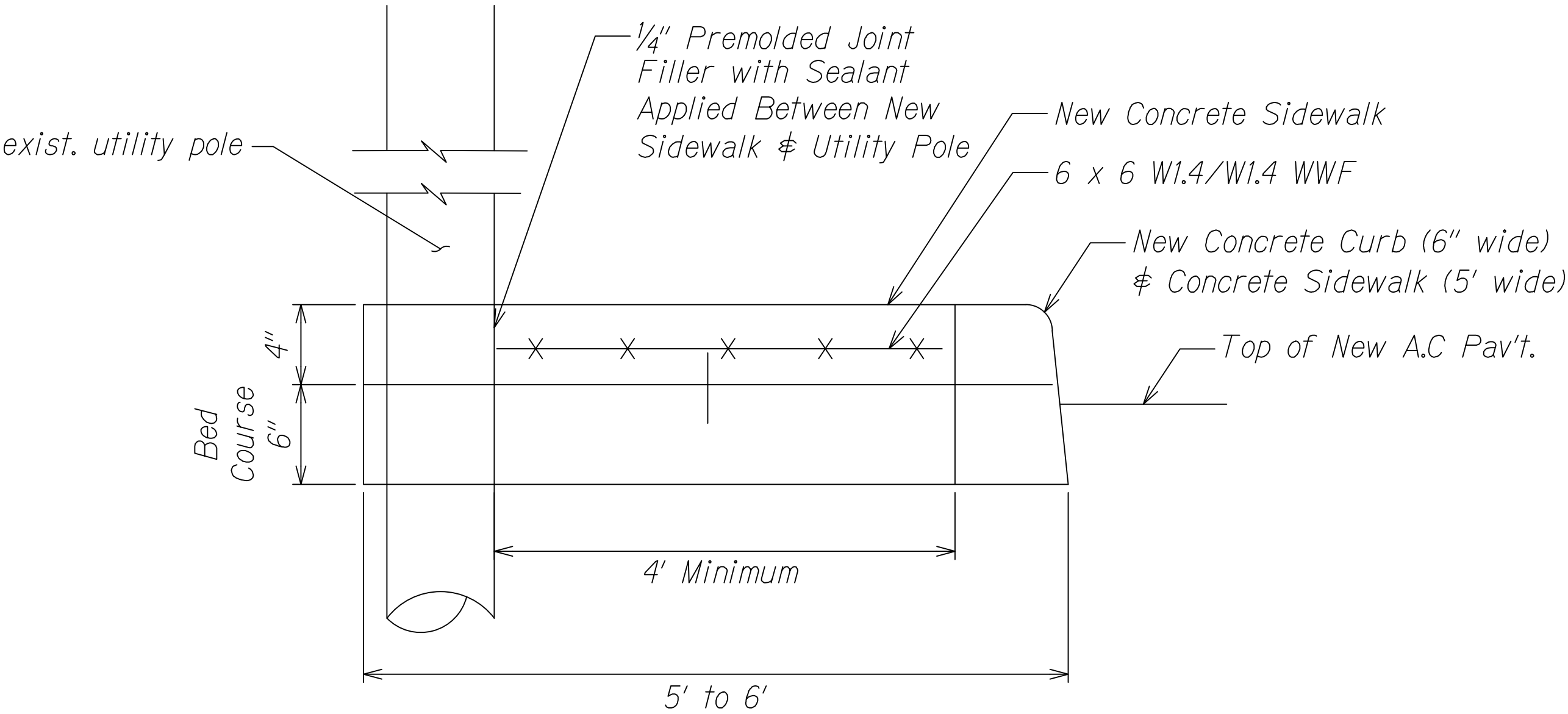


NOTE:  
Crosswalk Markings shall be Parallel to the Direction of the Vehicle Travel, Even if the Crosswalk is Skewed to Roadway

CROSSWALK STRIPING DETAIL  
Not to Scale

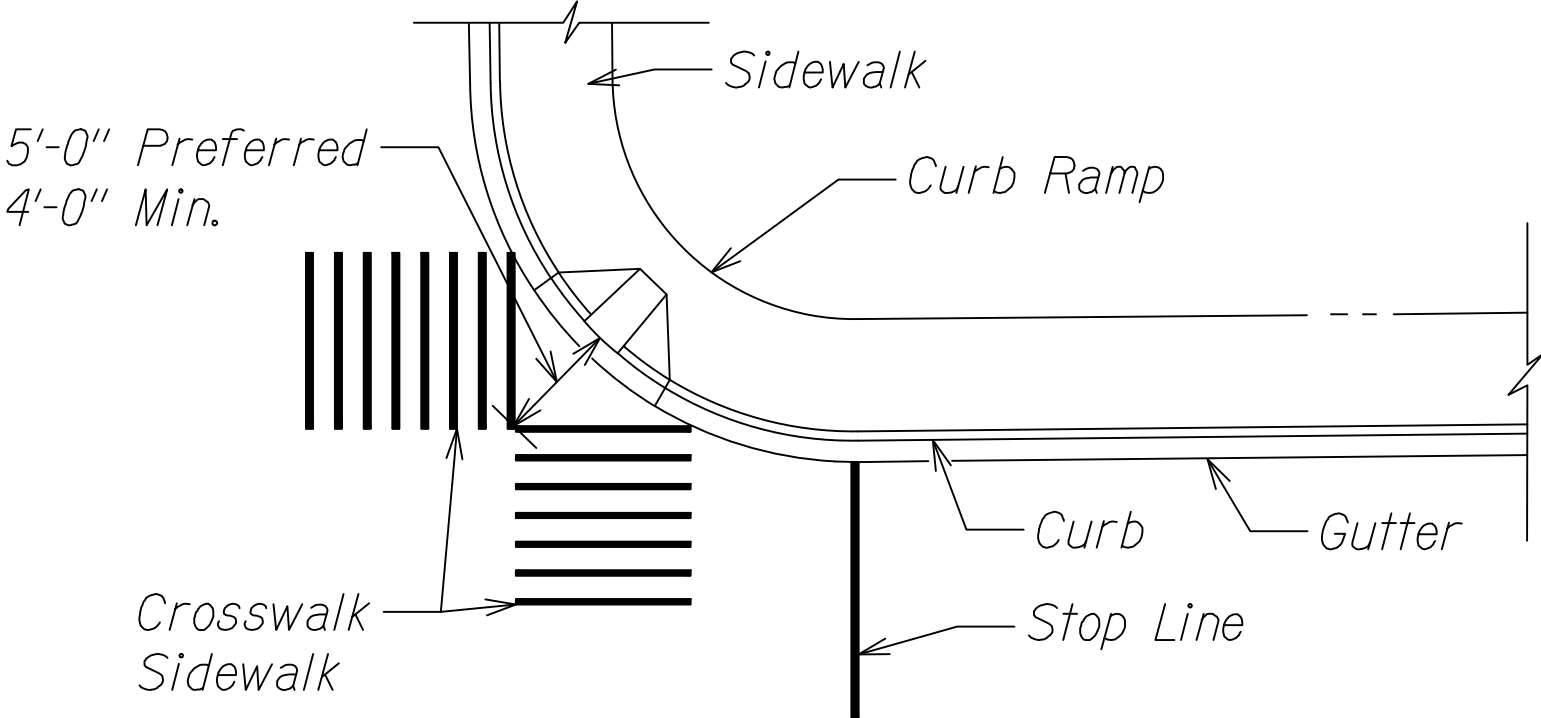


TYPICAL CROSSWALK STRIPING  
AT CURB RAMP  
Not to Scale

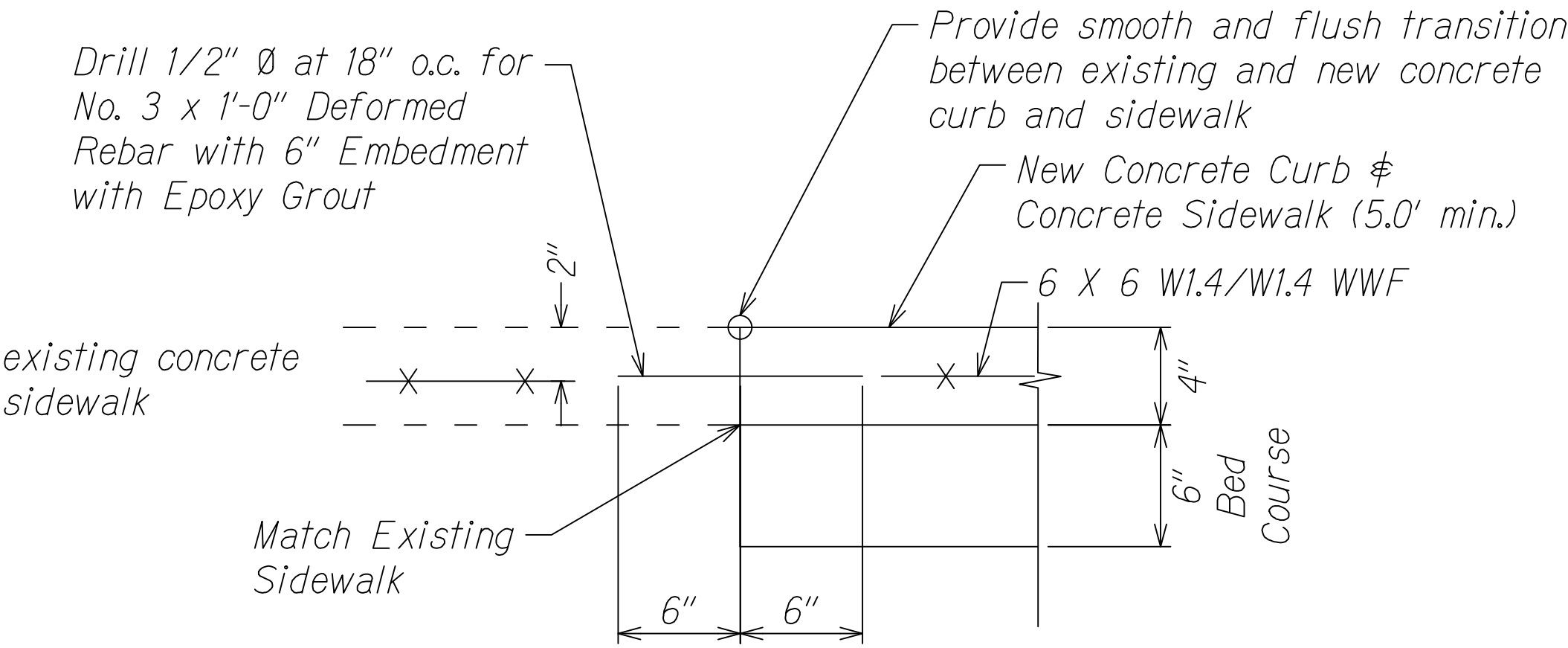


NOTE:  
Refer to Std. Plans D-05 & D-15 for additional details.

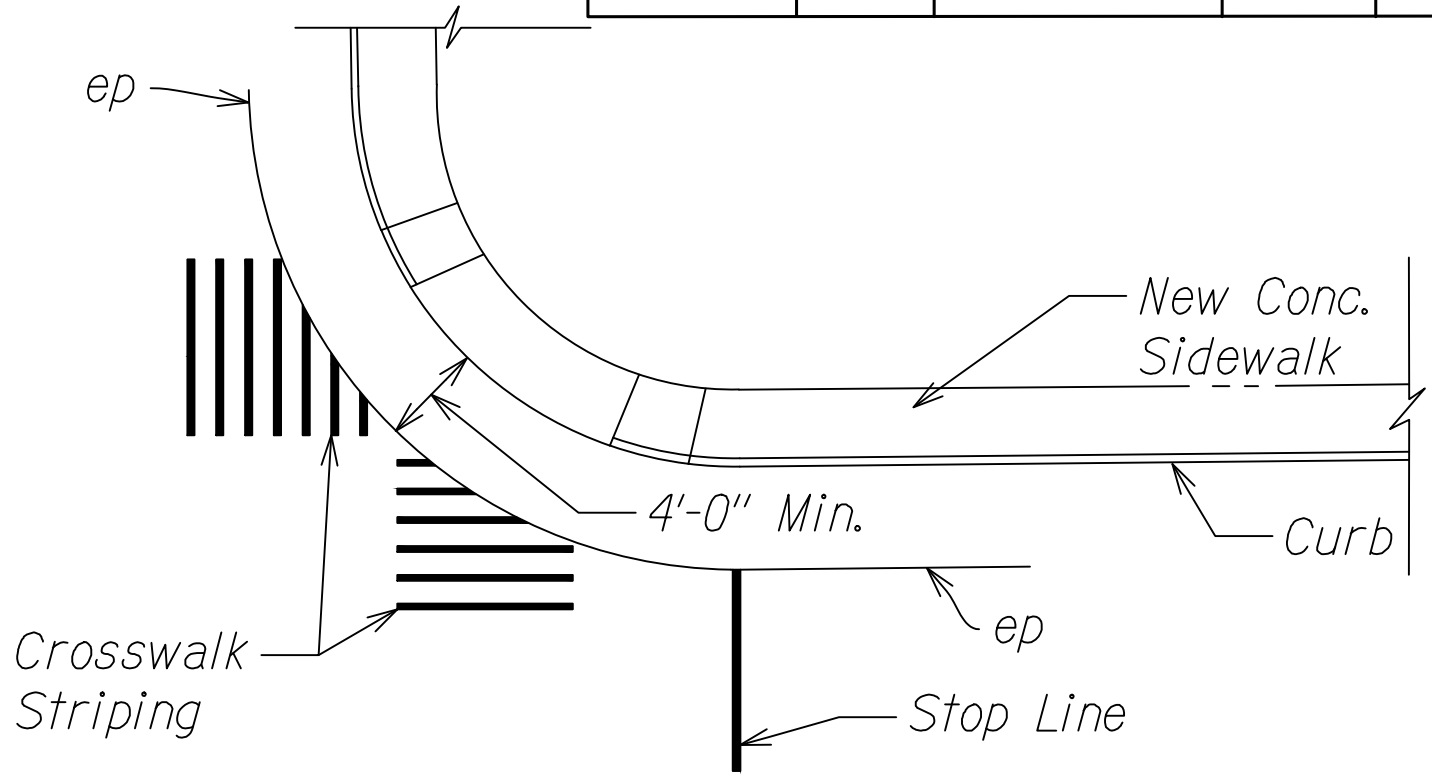
TYPICAL CONSTRUCTION AT EXISTING UTILITY POLE  
Not to Scale



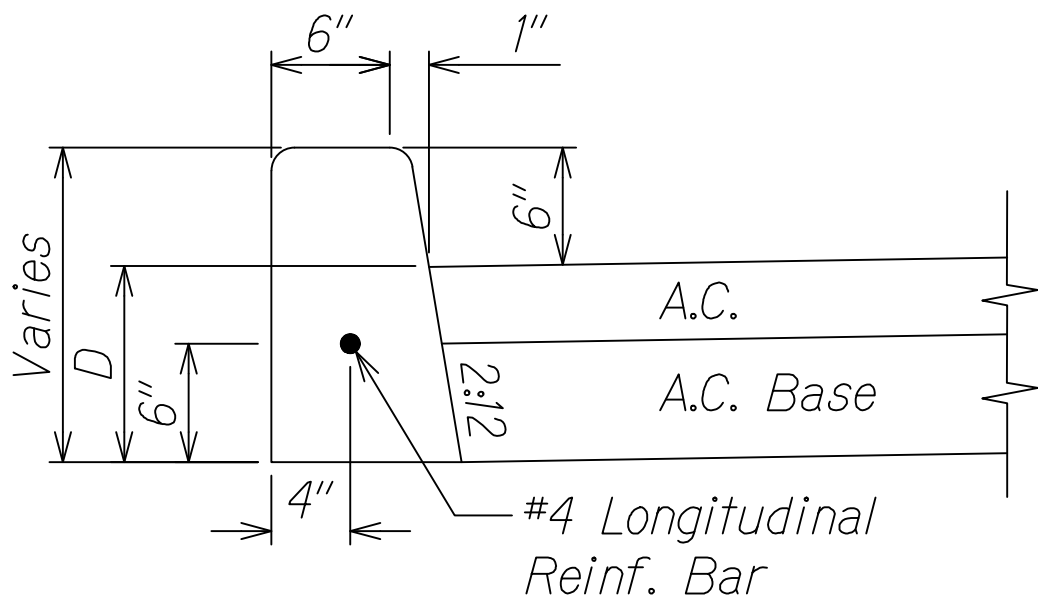
TYPICAL CROSSWALK STRIPING  
AT DIAGONAL CURB RAMP  
Not to Scale



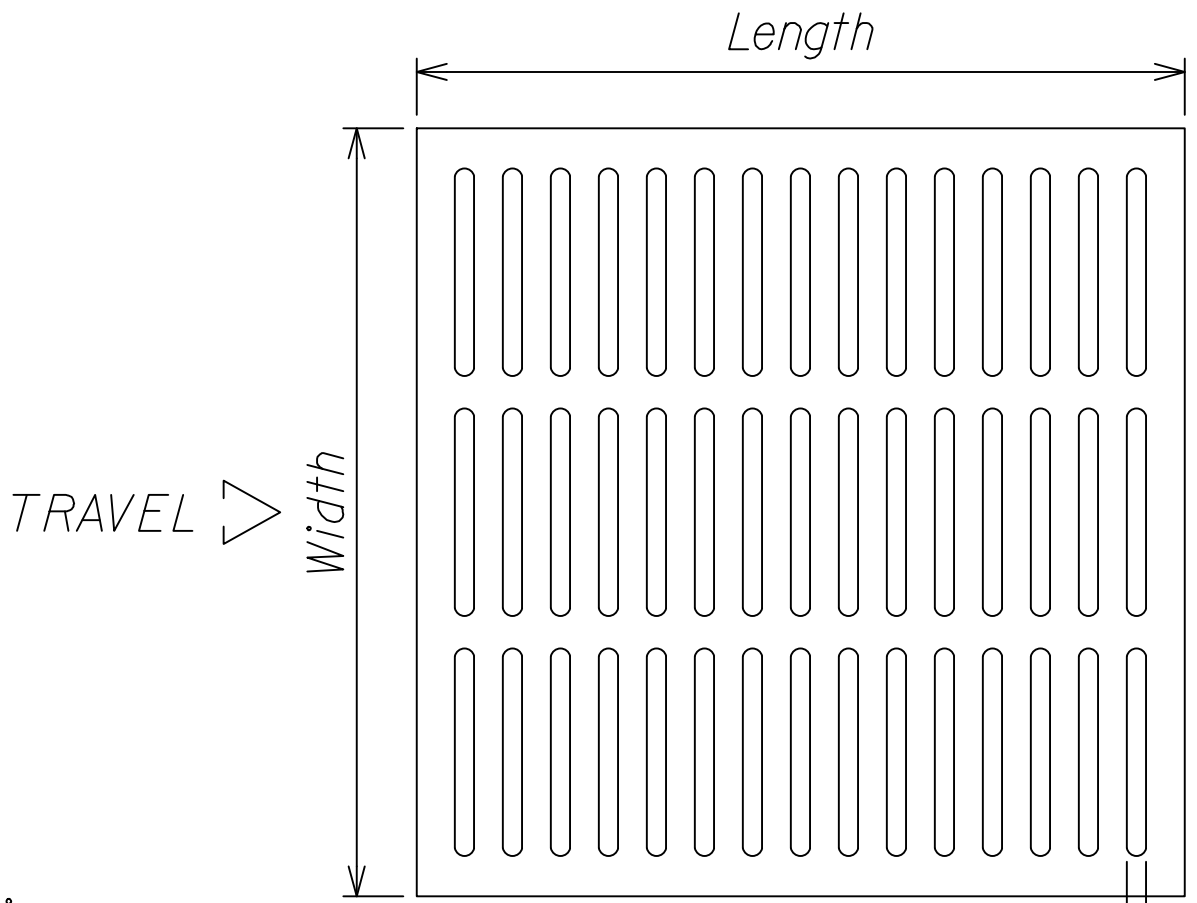
TYPICAL CONSTRUCTION JOINT  
AT EXISITING RAMP  
Not to Scale



TYPICAL CROSSWALK STRIPING  
AT BLENDED TRANSITION  
Not to Scale



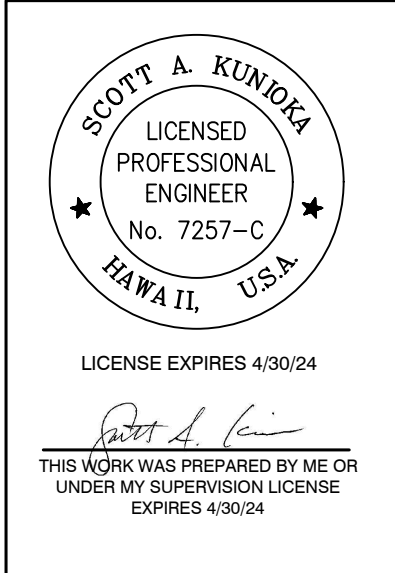
CAST-IN-PLACE CURB, TYPE 2D  
Not to Scale



NOTES:  
1. Long dimension of opening shall be placed perpendicular to walking path direction of travel.

2. Contractor to field verify dimensions of each affected grate and provide shop drawing for submittal.

ADA COMPLIANT GRATE  
Not to Scale



STATE OF HAWAII  
DEPARTMENT OF TRANSPORTATION  
HIGHWAYS DIVISION

### MISCELLANEOUS DETAILS

KUHIO HIGHWAY RESURFACING  
AND SAFETY IMPROVEMENTS  
Route 560 M.P. 0.0 to M.P. 4.5  
Fed. Aid Proj. No. STP-0560(017)

Scale: Not to Scale Date: July, 2023

SHEET No. R-9 OF 28 SHEETS