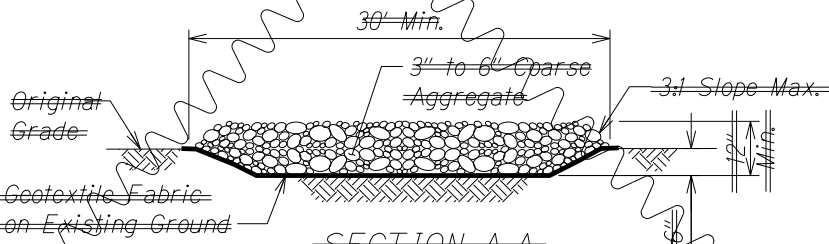


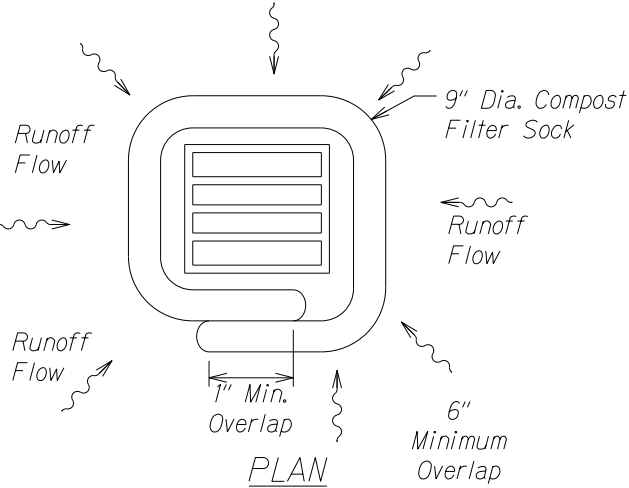
PLAN



SECTION A-A

TEMPORARY CONSTRUCTION STABILIZATION

Not to Scale



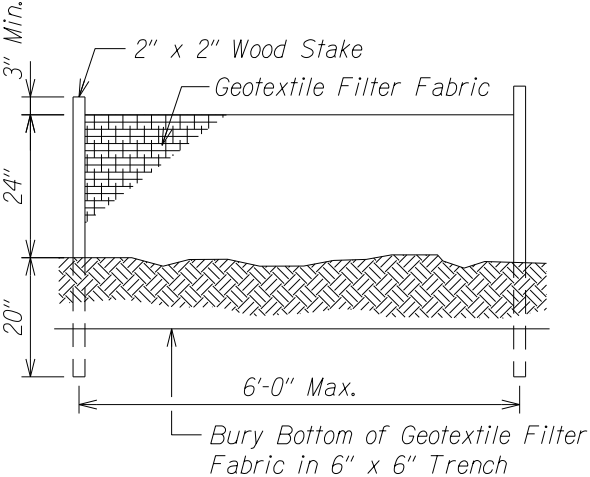
COMPOST FILTER SOCK

DRAIN INLET PROTECTION DETAIL

Not to Scale

COMPOST FILTER SOCK NOTES:

1. Remove accumulated sediment when depth reaches 1/3 the barrier height.
2. Sock material and compost shall be removed at the completion of construction (or a phase of construction) and shall be disposed or properly.
3. No staking is required for slopes < 4:1.
4. Compost shall not contain biosolids and should be consistent with United States Environmental Protection Agency guidelines.

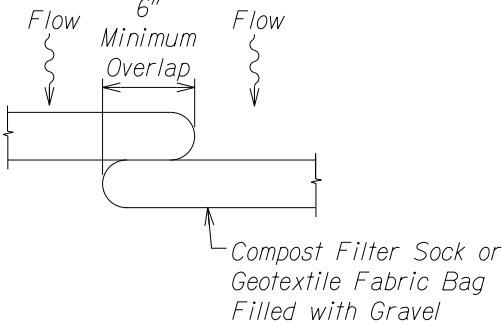


SILT FENCE DETAIL

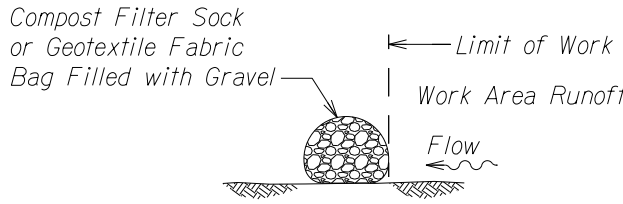
Not to Scale

SILT FENCE NOTES:

1. The filter fabric shall be a minimum of 36 inches wide.
2. If silt fence is obtained from manufacturer as a package (i.e. fabric attached to post) the manufacturer's installation instructions shall be adhered to.



PLAN



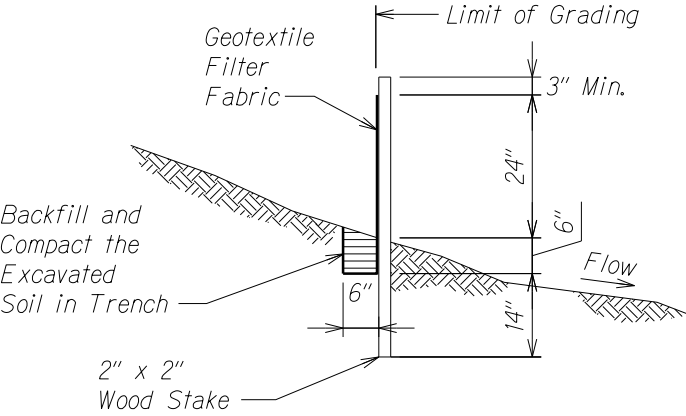
SECTION

NOTE:

Sediment Filter can be either Compost Filter Sock and/or Geotextile Fabric Bag filled with Gravel.

SEDIMENT FILTER DETAIL

Not to Scale



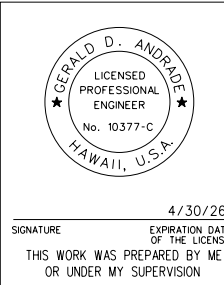
STAGING AREA NOTES:

1. Place and tack down geotextile fabric over sheet plastic at staging area.
2. Place Compost Filter Sock or silt fence along low end of staging area perimeter to filter staging area runoff.
3. Place drip pans under all vehicles and equipment.
4. Provide spill kits at all staging areas.
5. Secure and provide secondary containment for portable toilets.
6. Contractor to install temporary construction stabilization entrances for staging areas. See details on this Sheet.

STORAGE AREA NOTES:

1. Place Compost Filter Sock along storage area perimeter to filter runoff.
2. Contractor to install temporary construction stabilization entrances for storage areas. See details on this Sheet.

LEGEND FOR AS-BUILT POSTINGS	
	Squiggly line for as-built deletion
	Double line for as-built deletion
Roadway	Text for as-built posting



STATE OF HAWAII  
DEPARTMENT OF TRANSPORTATION  
HIGHWAYS DIVISION  
**WATER POLLUTION & EROSION CONTROL DETAILS**  
KUHIO HIGHWAY  
Hanalei Bridge Repair  
FAP Proj. No. BR-0560(016)

Scale: None Date: July 2022