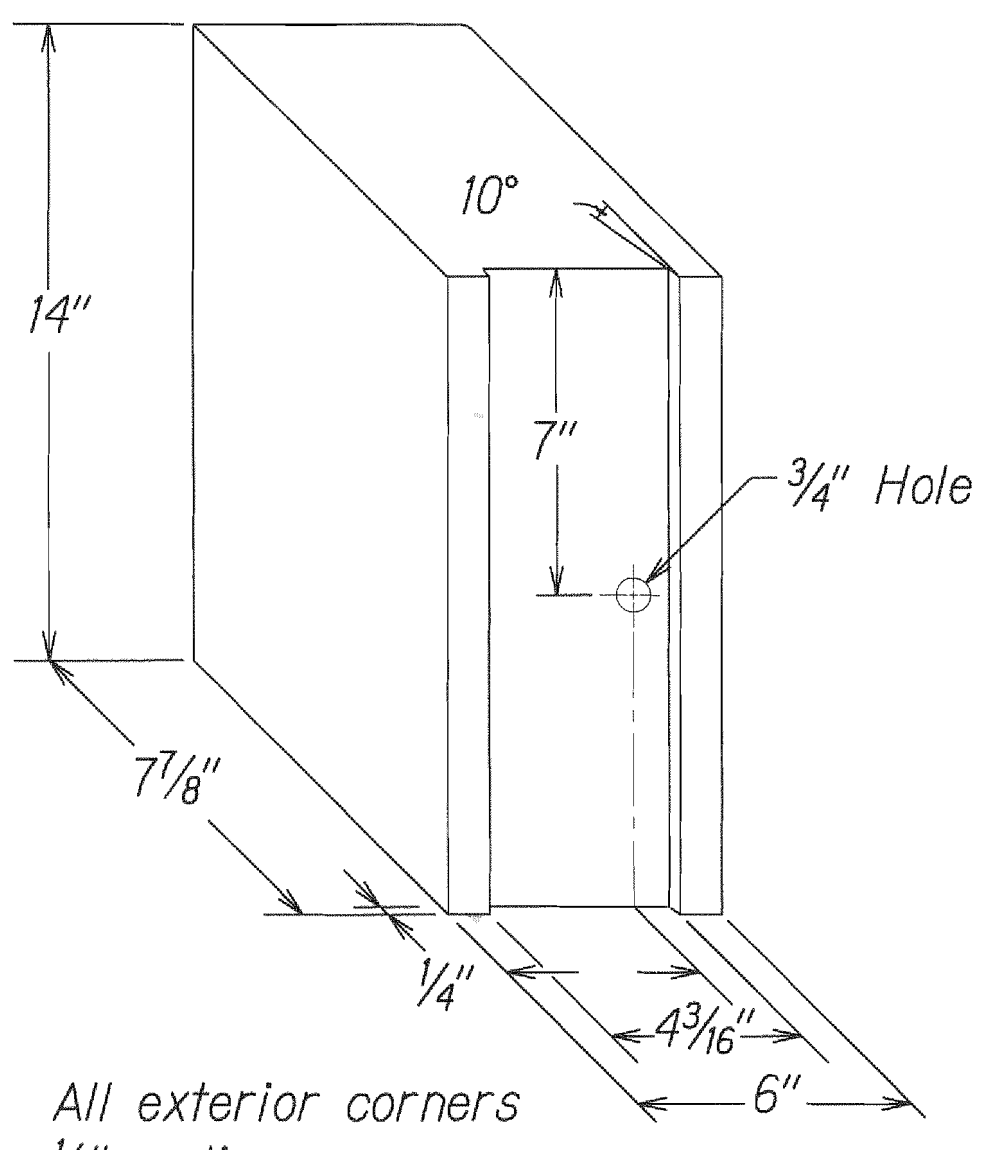


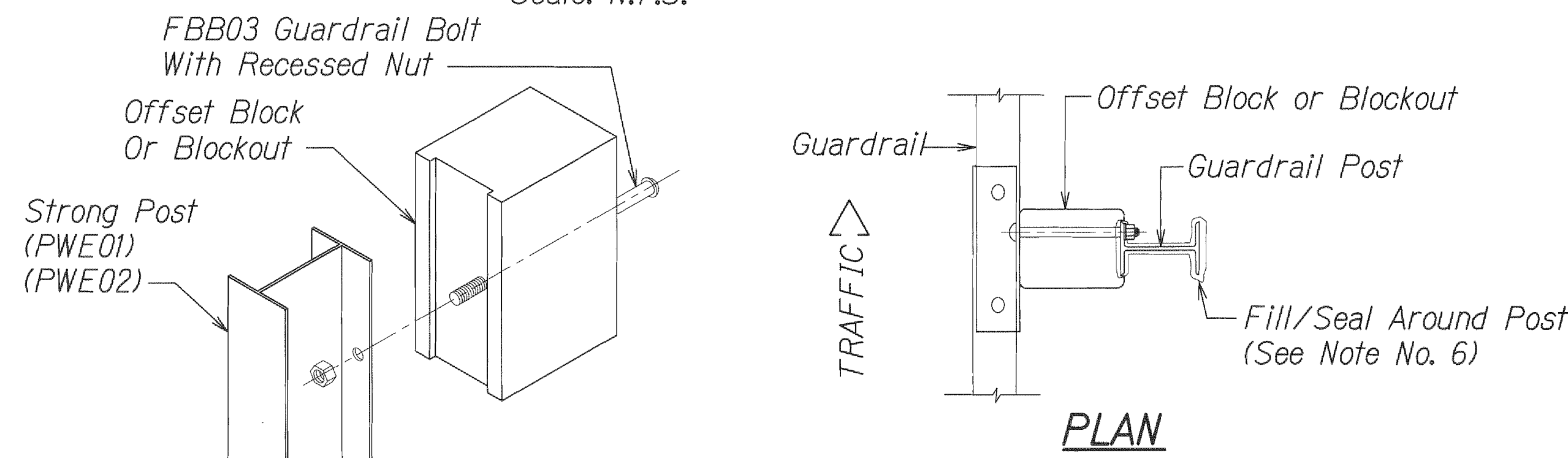
RECYCLED PLASTIC BLOCKOUT (TYPE I)

Scale: N.T.S.



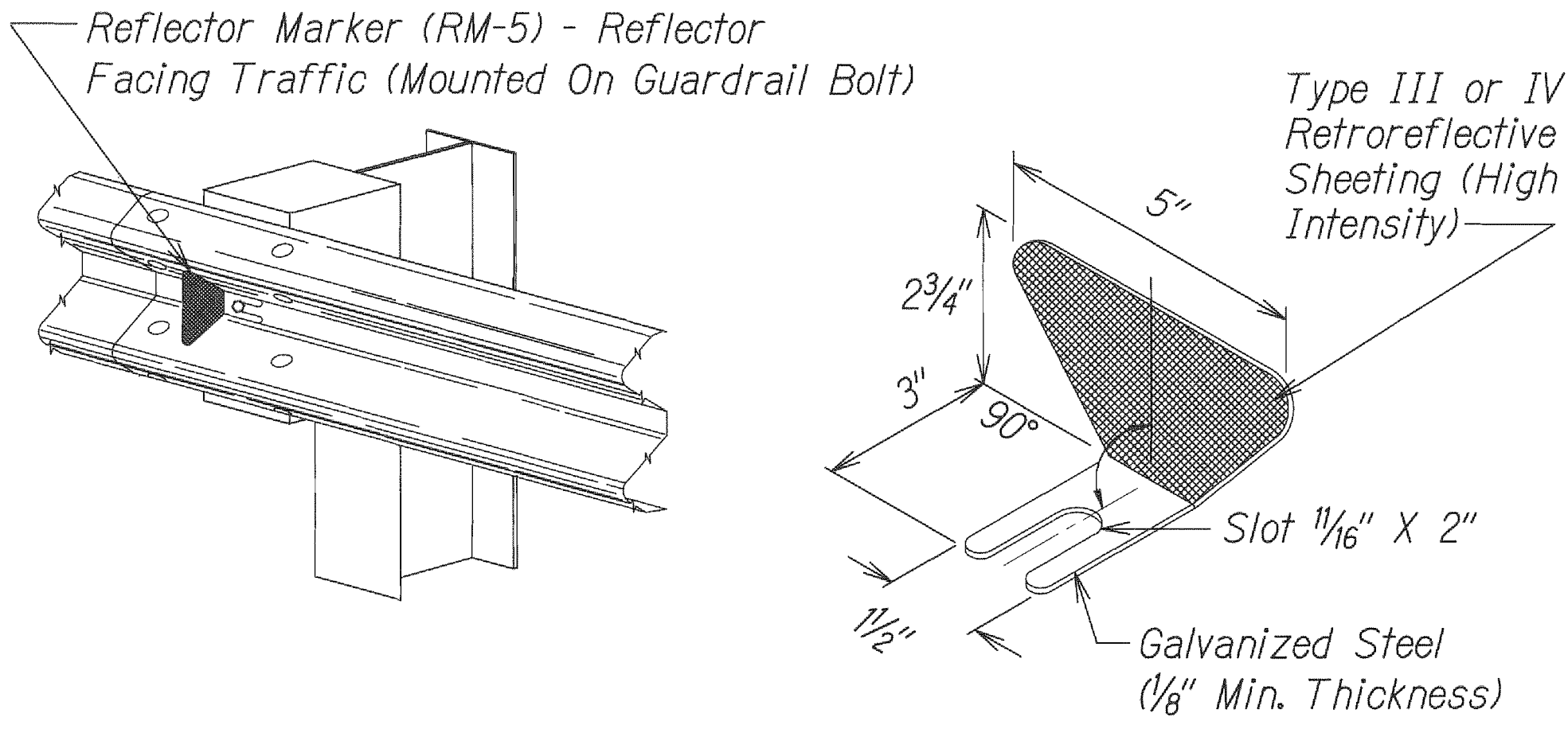
RECYCLED POLYETHYLENE OFFSET BLOCK (TYPE II)

Scale: N.T.S.



STEEL POST AND BLOCK DETAIL

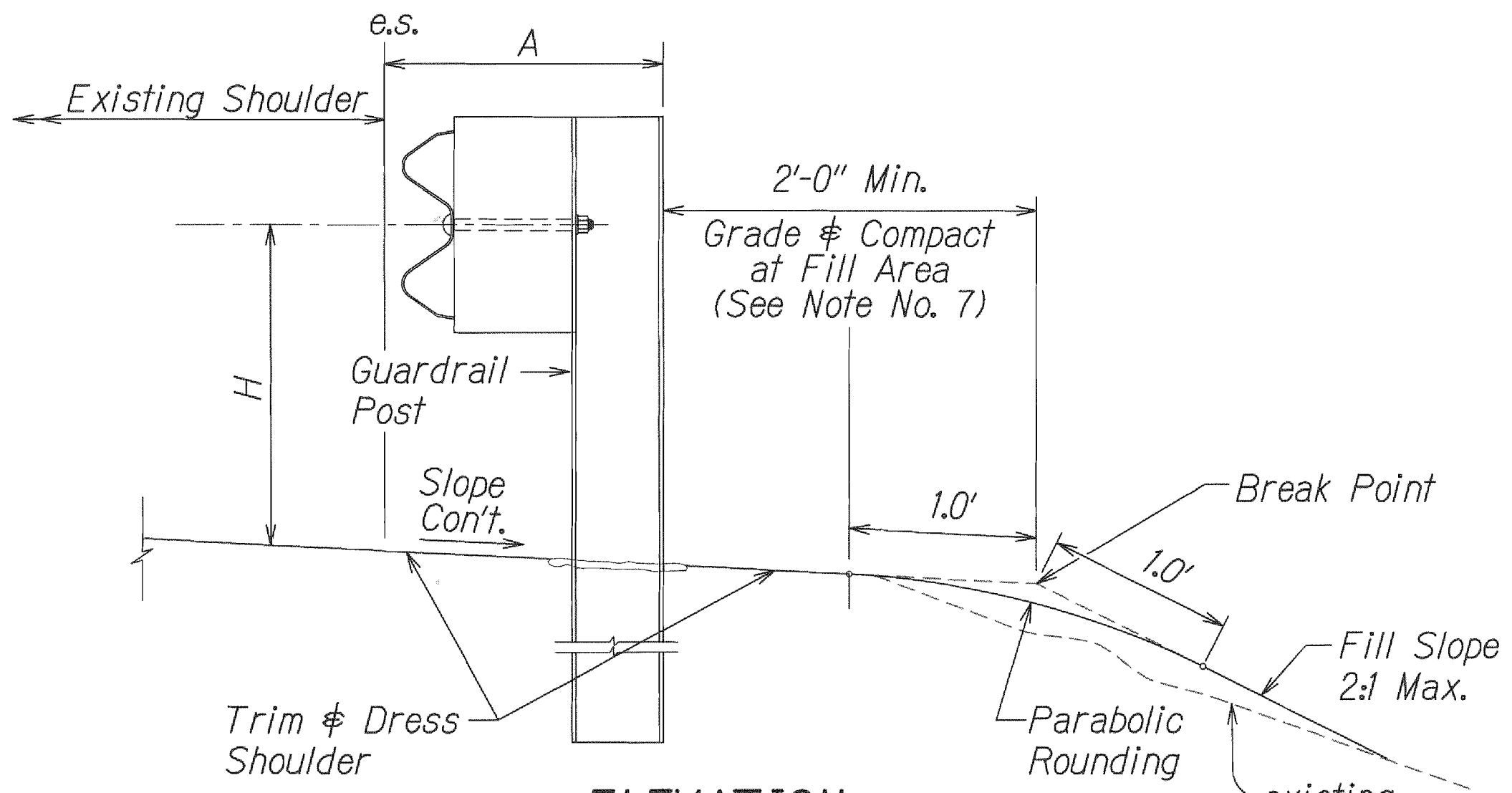
Scale: N.T.S.



REFLECTOR MARKER (RM-5) DETAIL AND TYPICAL INSTALLATION

Scale: N.T.S.

GUARDRAIL TYPE	DIMENSION	
	H	A
Strong Post W-Beam	1'-9 5/8"	1'-6"
Strong Post Rubrail (W-Beam)	2'-0"	1'-6"
Modified Or Strong Post Thrie Beam	2'-0"	2'-0"

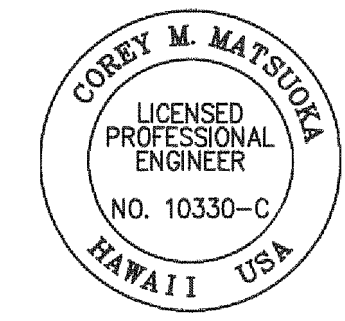


TYPICAL GUARDRAIL INSTALLATION

Scale: N.T.S.

APPROVED: (For Work Within County Right of Way)

County Engineer
 County of Kauai
 Date 10.12.12



THIS WORK WAS PREPARED BY ME OR UNDER MY SUPERVISION

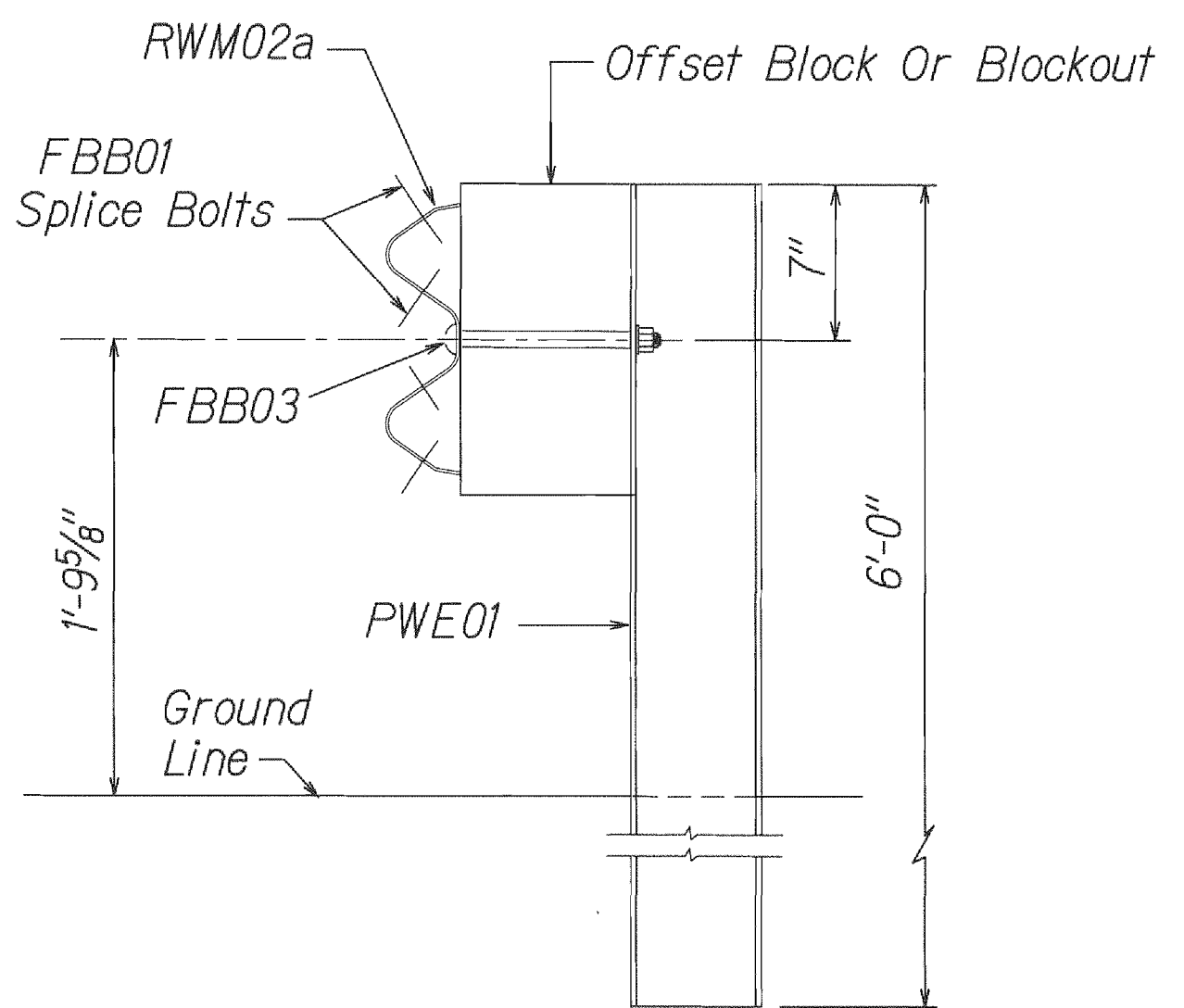
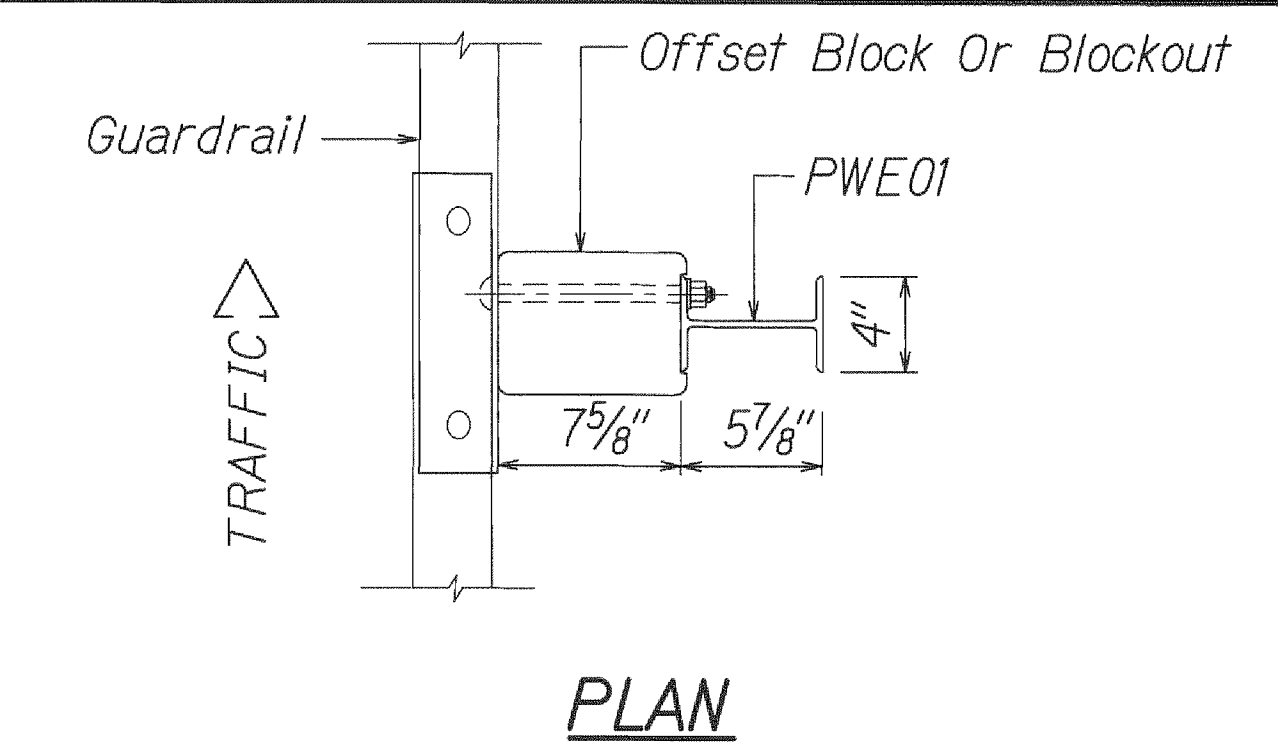
SIGNATURE
 EXPIRATION DATE OF THE LICENSE
 4/30/14

STATE OF HAWAII
DEPARTMENT OF TRANSPORTATION
HIGHWAYS DIVISION

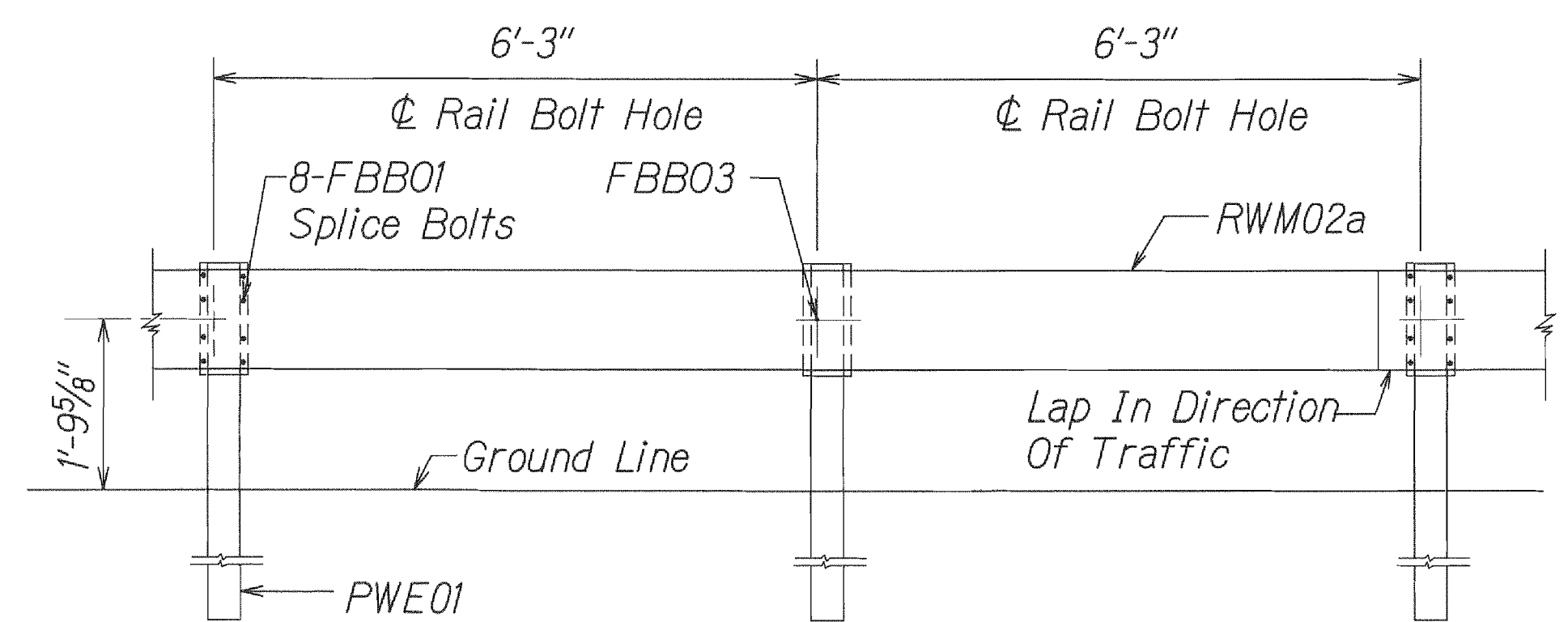
GUARDRAIL DETAILS & NOTES

KUHIO HIGHWAY SAFETY IMPROVEMENTS
Hanalei Bridge to Waikoko Bridge
Fed-Aid Project No. HRR-0560(12)
Scale: N.T.S.
Date: June 2012
SHEET No. 1 OF 3 SHEETS

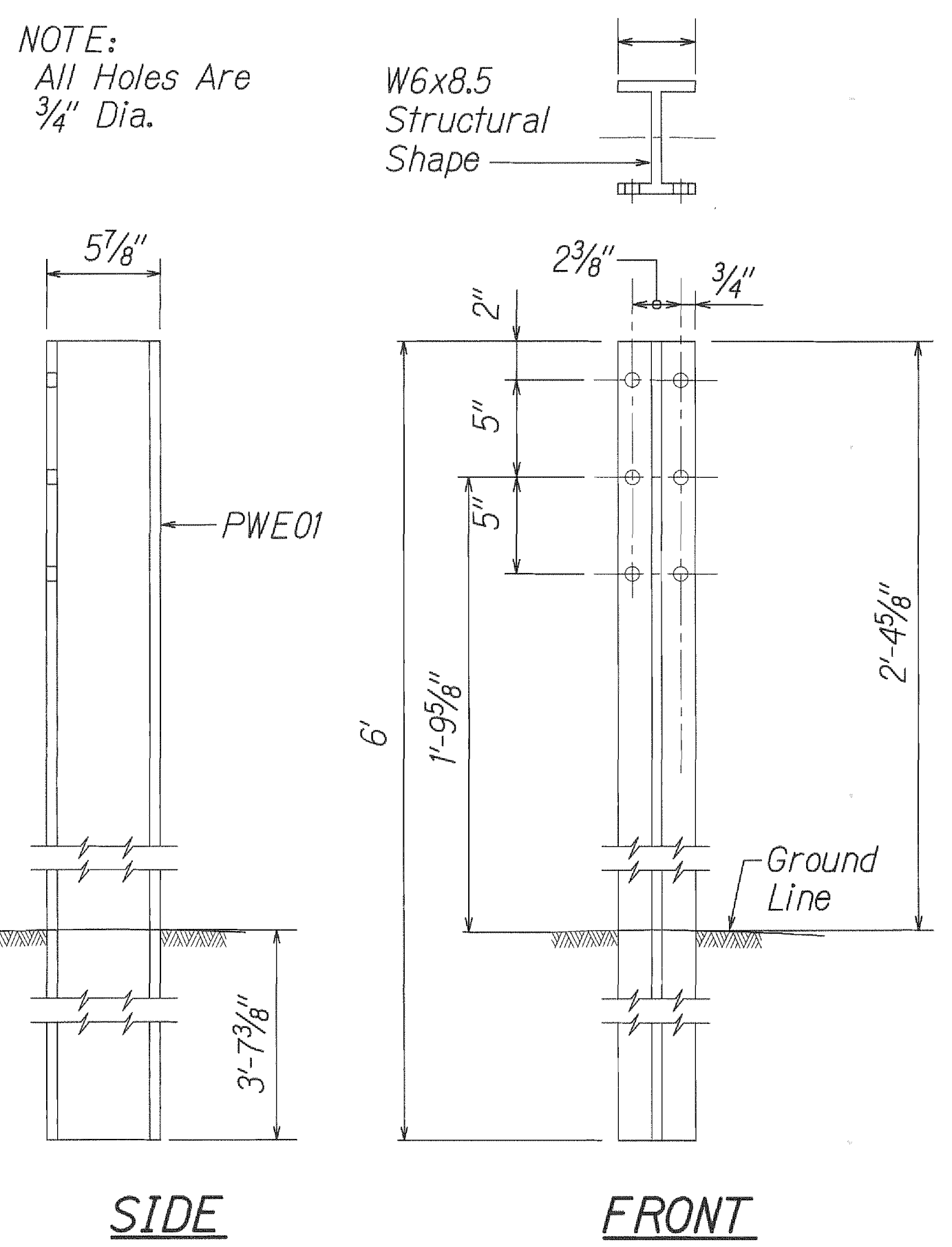
SURVEY PLOTTED BY	DATE
DRAWN BY	
TRACED BY	
NOTE BOOK	
QUANTITIES BY	
CHECKED BY	



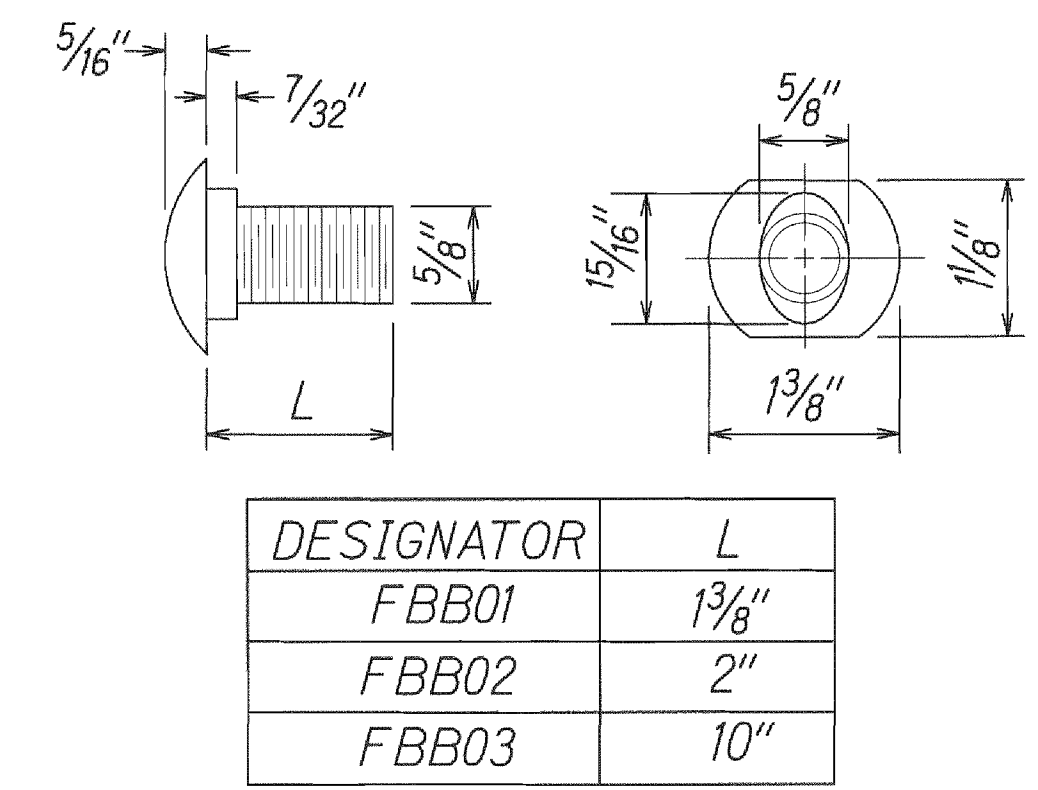
STRONG POST W-BEAM GUARDRAIL (SGR04a)
Scale: N.T.S.



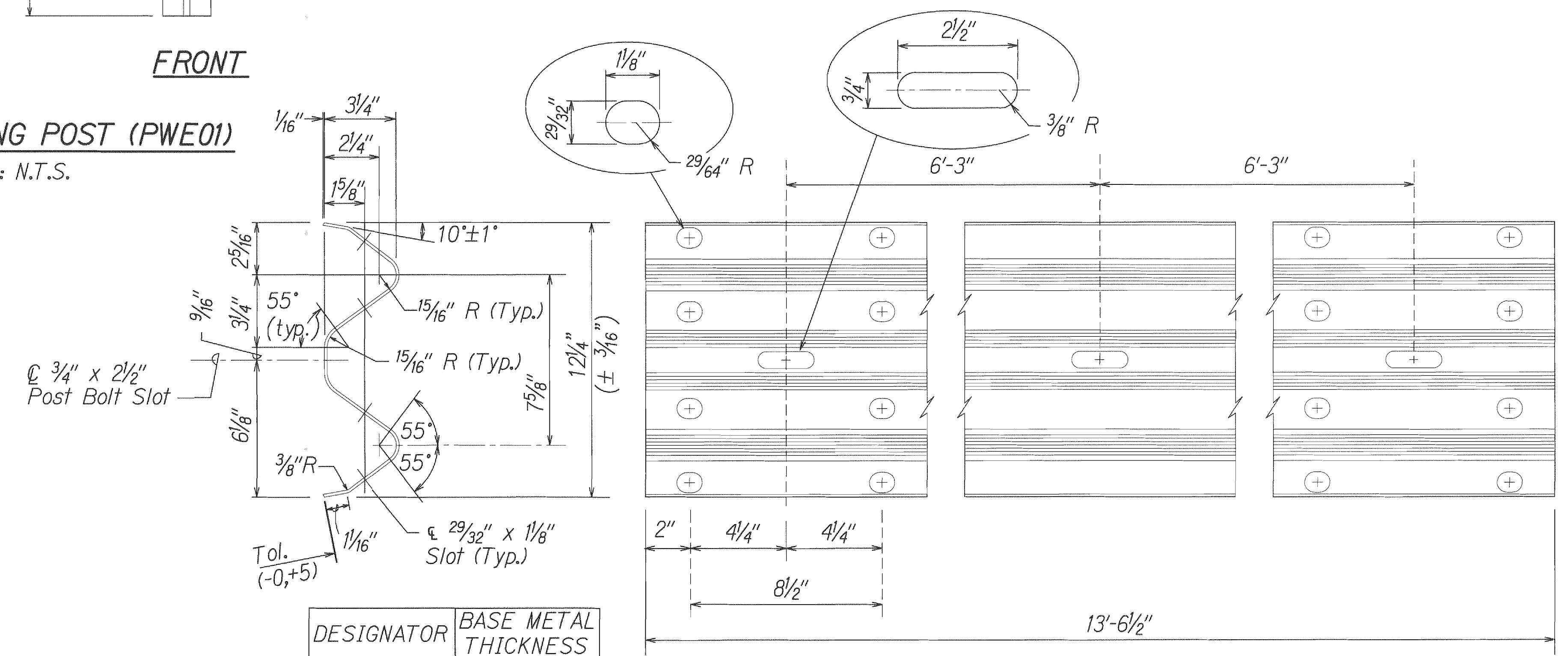
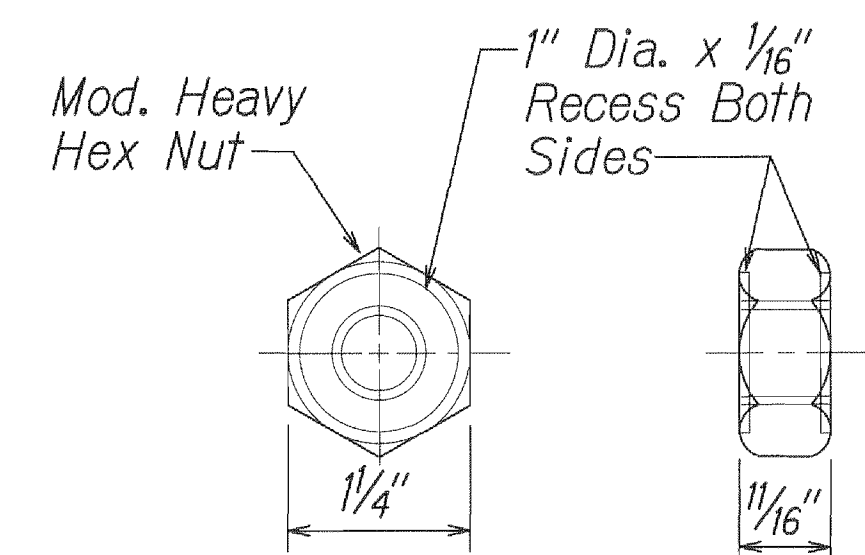
STRONG POST W-BEAM GUARDRAIL WITH RECYCLED OFFSET BLOCK OR PLASTIC BLOCKOUT
Scale: N.T.S.



W-BEAM STRONG POST (PWE01)
Scale: N.T.S.



GUARDRAIL BOLTS AND RECESSED NUT
Scale: N.T.S.



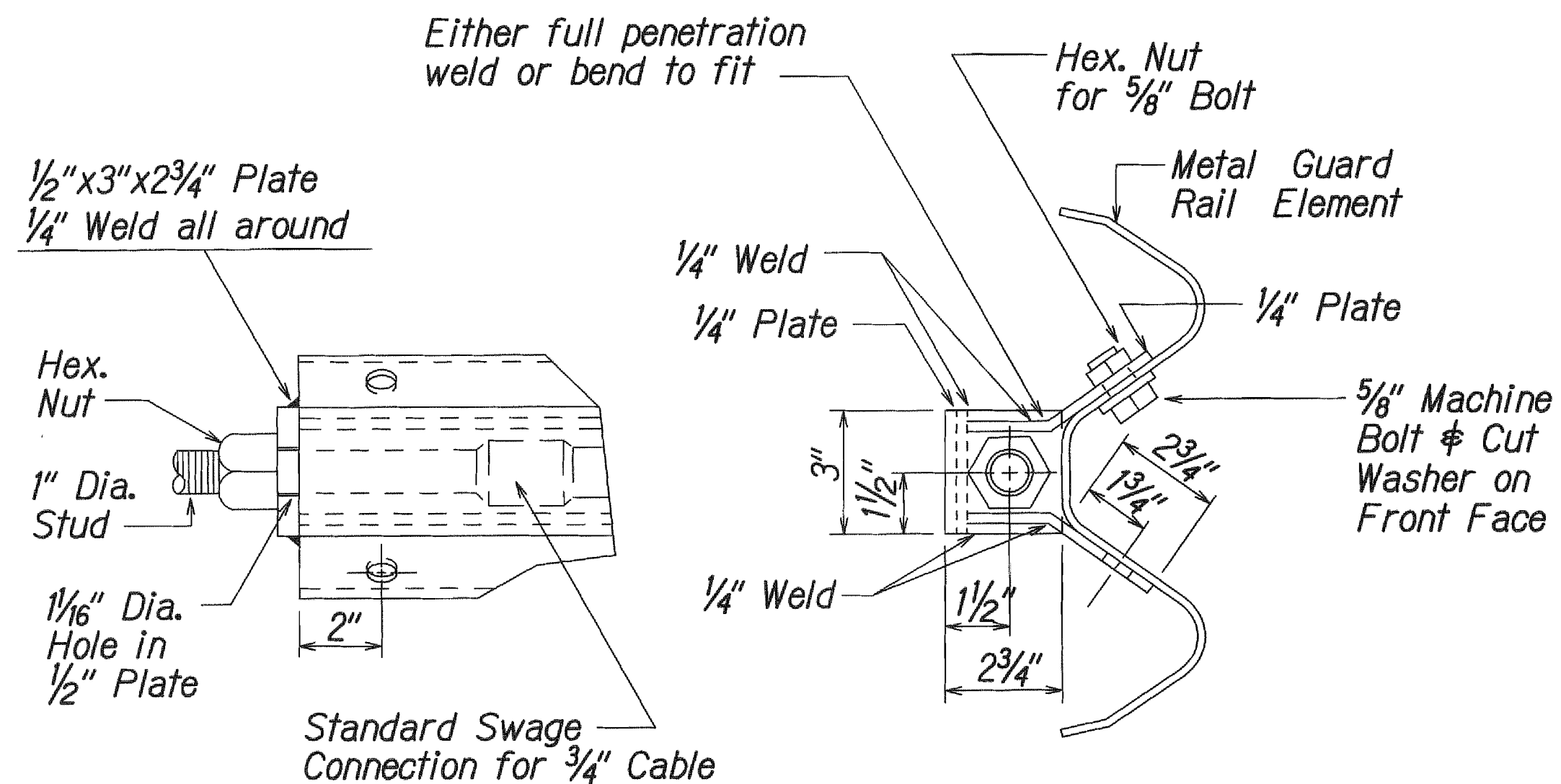
2 SPACE W-BEAM GUARDRAIL (RWM02a)
Scale: N.T.S.

SURVEY PLOTTED BY: _____ DATE: _____
 DRAWN BY: _____
 TRACED BY: _____
 NOTE BOOK: _____
 QUANTITIES BY: _____
 CHECKED BY: _____

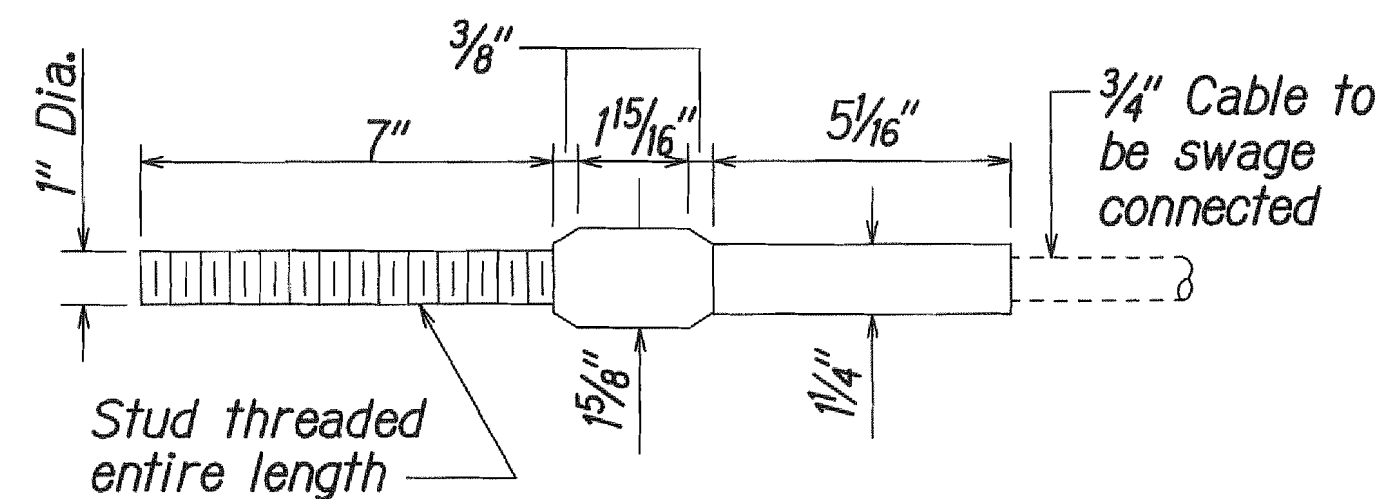
APPROVED: (For Work Within County Right of Way)
 County Engineer
 County of Kauai
 Date: 10.12.12

THIS WORK WAS PREPARED BY ME OR UNDER MY SUPERVISION
 SIGNATURE: Corey M. Matsuka
 EXPIRATION DATE OF THE LICENSE: 4/30/14

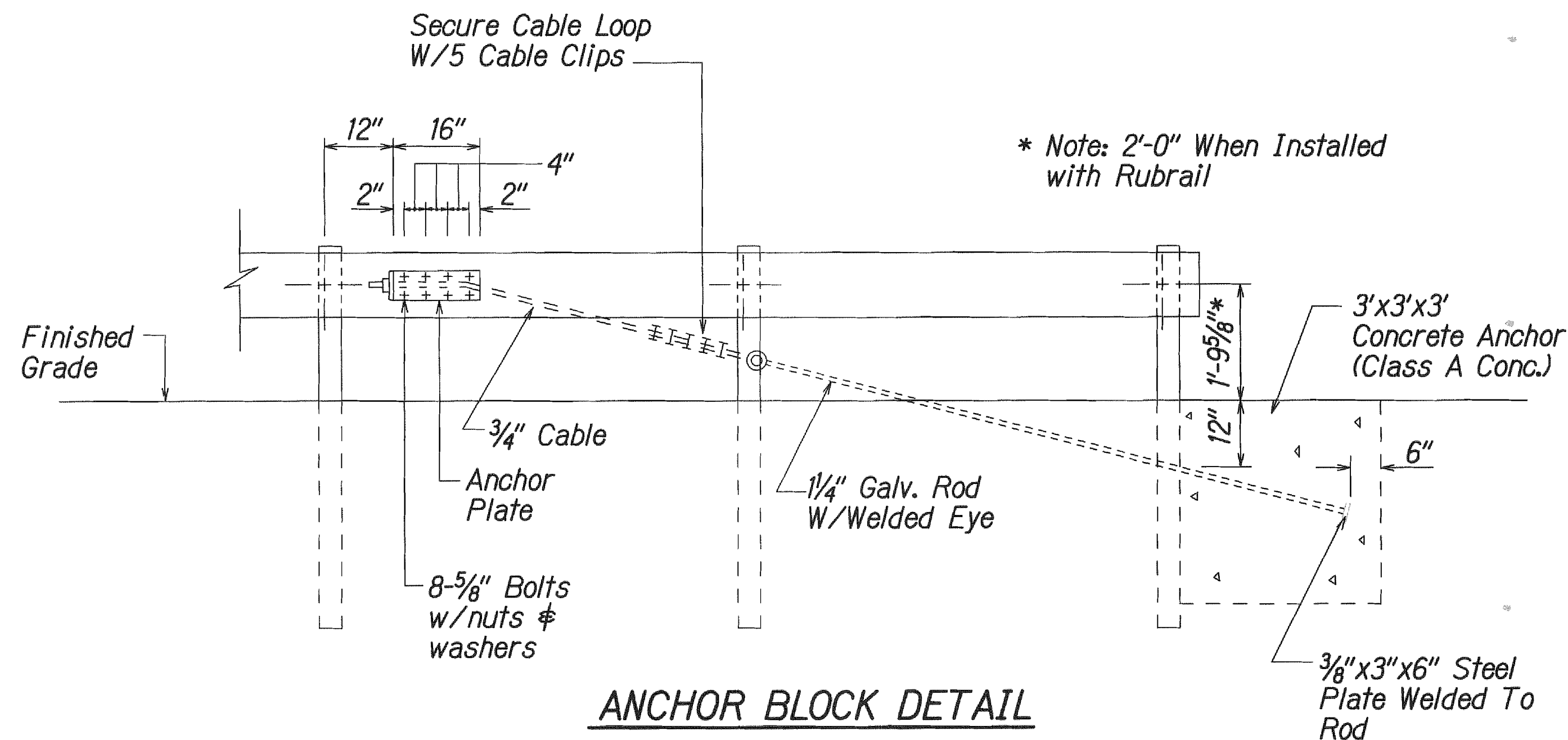
STATE OF HAWAII
 DEPARTMENT OF TRANSPORTATION
 HIGHWAYS DIVISION
STRONG POST W-BEAM GUARDRAIL
 KUHIO HIGHWAY SAFETY IMPROVEMENTS
 Hanalei Bridge to Waikoko Bridge
 Fed-Aid Project No. HRR-0560(12)
 Scale: N.T.S. Date: June 2012
 SHEET No. 2 OF 3 SHEETS



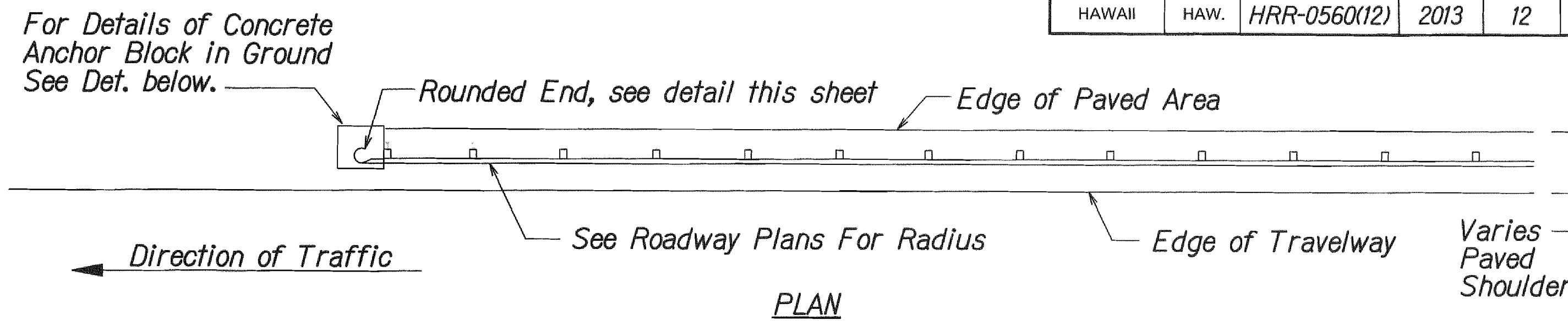
ANCHOR PLATE DETAILS



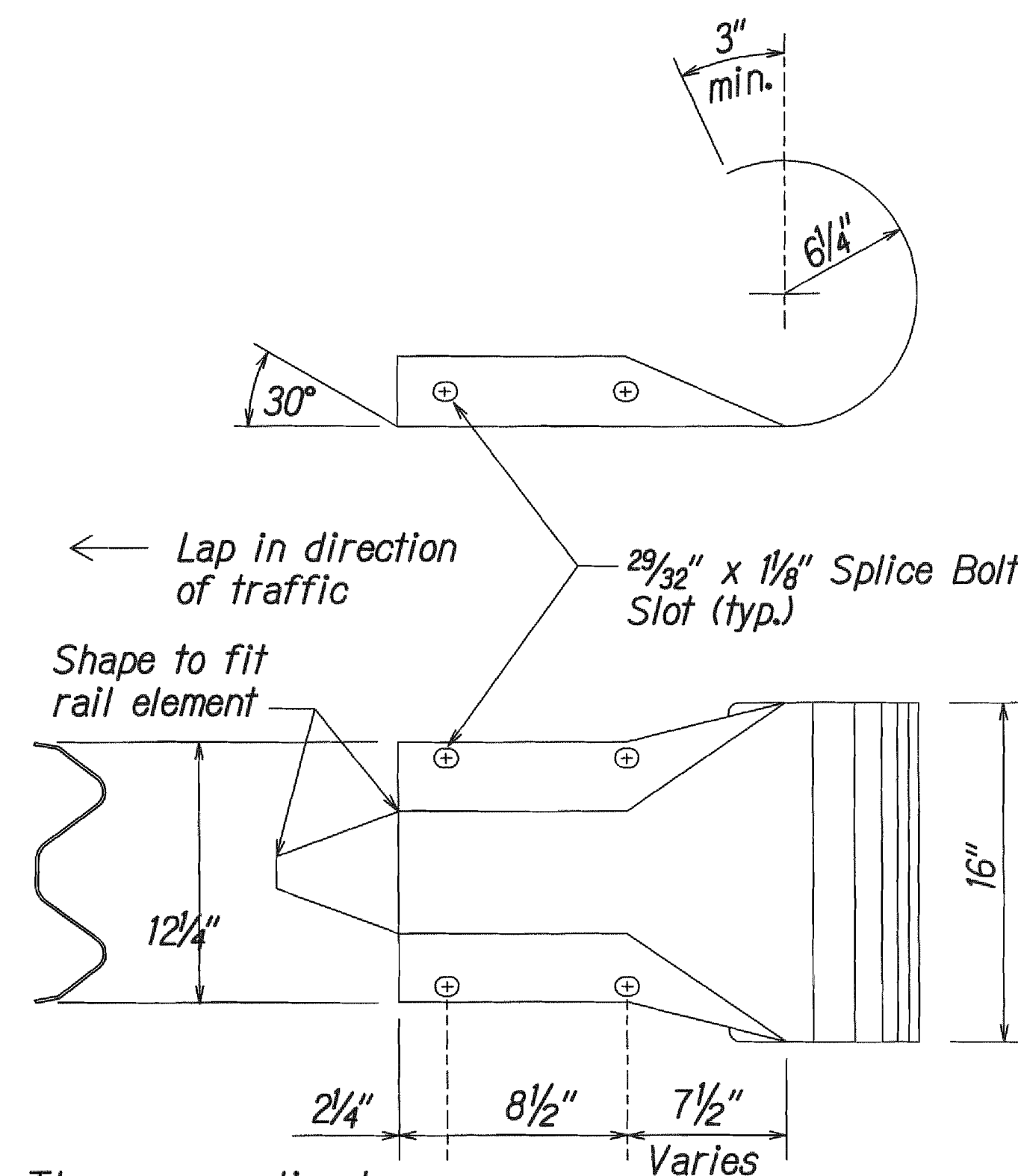
STANDARD SWAGED FITTING AND STUD



ANCHOR BLOCK DETAIL



TERMINAL SECTION, MODIFIED TYPE 'G' WITH ROUNDED END



The cross-sectional dimensions for this part are to fit over part RWM02a

DESIGNATOR	BASE METAL THICKNESS
RWE03a	12 GAGE

W-BEAM END SECTION (ROUNDED RWE03a)

NOTES:

- During construction, the Contractor shall layout the proposed Type 'G' Modified End Terminal and receive approval from the Construction Engineer prior to installation.
- Strong Post, Offset Block or Blockout, and W Beam shall be paid under Item No. 606.0100 - GUARDRAIL, STRONG POST W-BEAM WITH 6-FT. POSTS.
- Concrete anchor block, excavation, anchor rod, rounded end and miscellaneous appurtenances necessary to anchor the guardrail ends shall be paid under Item No. 606.0200 - TERMINAL SECTION, MODIFIED TYPE 'G' WITH ROUNDED END.

SURVEY PLOTTED BY	DATE
DRAWN BY	
CHECKED BY	
NOTE BOOK	
QUANTITIES BY	
CHECKED BY	
NO. 00000000	

APPROVED: (For Work Within County Right of Way)

County Engineer
County of Kauai

10.12.12
Date

THIS WORK WAS PREPARED BY ME OR UNDER MY SUPERVISION

SIGNATURE
COREY M. MATSUDA
4/30/14
EXPIRATION DATE OF THE LICENSE

STATE OF HAWAII
DEPARTMENT OF TRANSPORTATION
HIGHWAYS DIVISION

GUARDRAIL DETAILS & NOTES

KUHIO HIGHWAY SAFETY IMPROVEMENTS
Hanalei Bridge to Waikoko Bridge
Fed-Aid Project No. HRR-0560(12)
Scale: N.T.S.
Date: June 2012

SHEET No. 3 OF 3 SHEETS