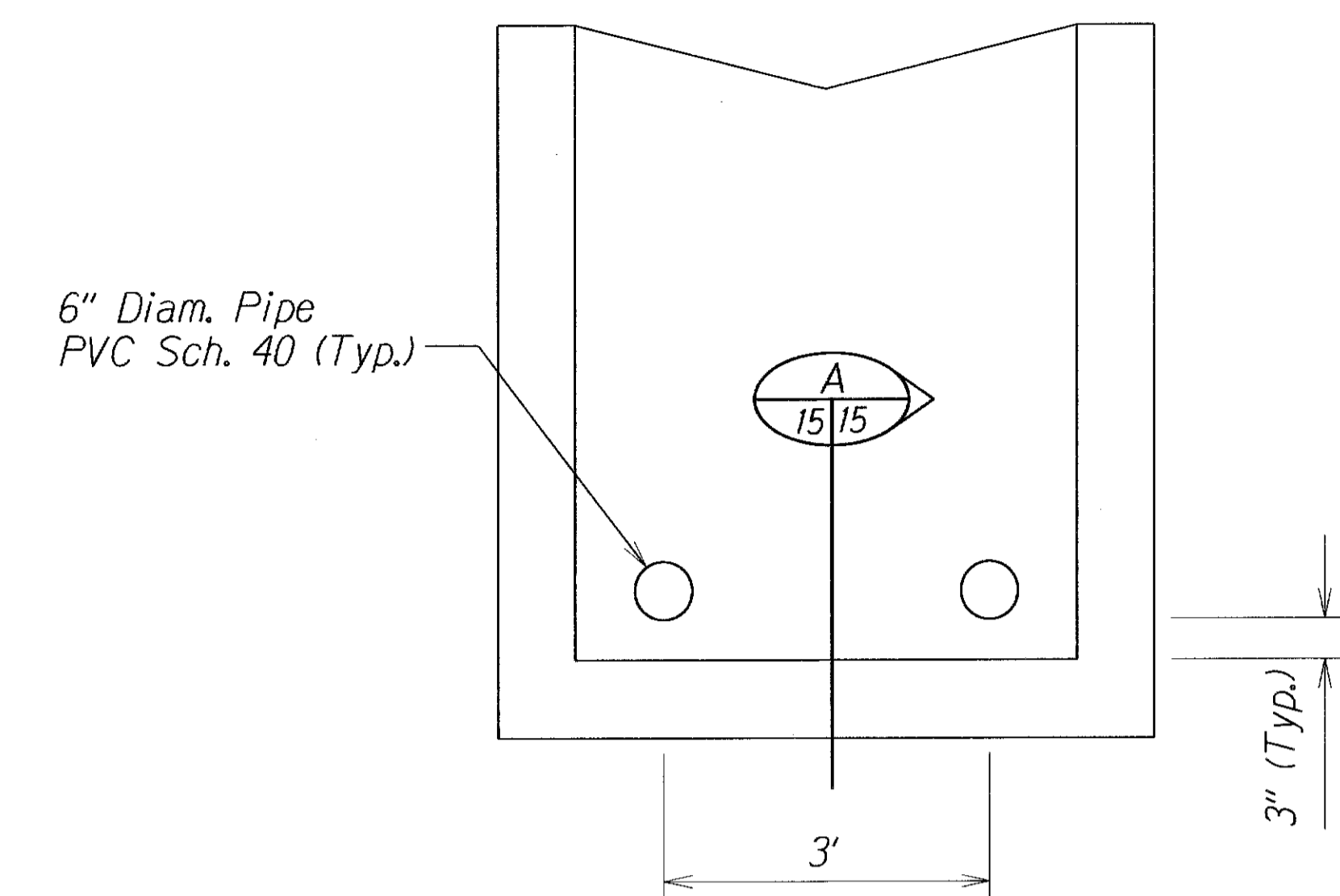
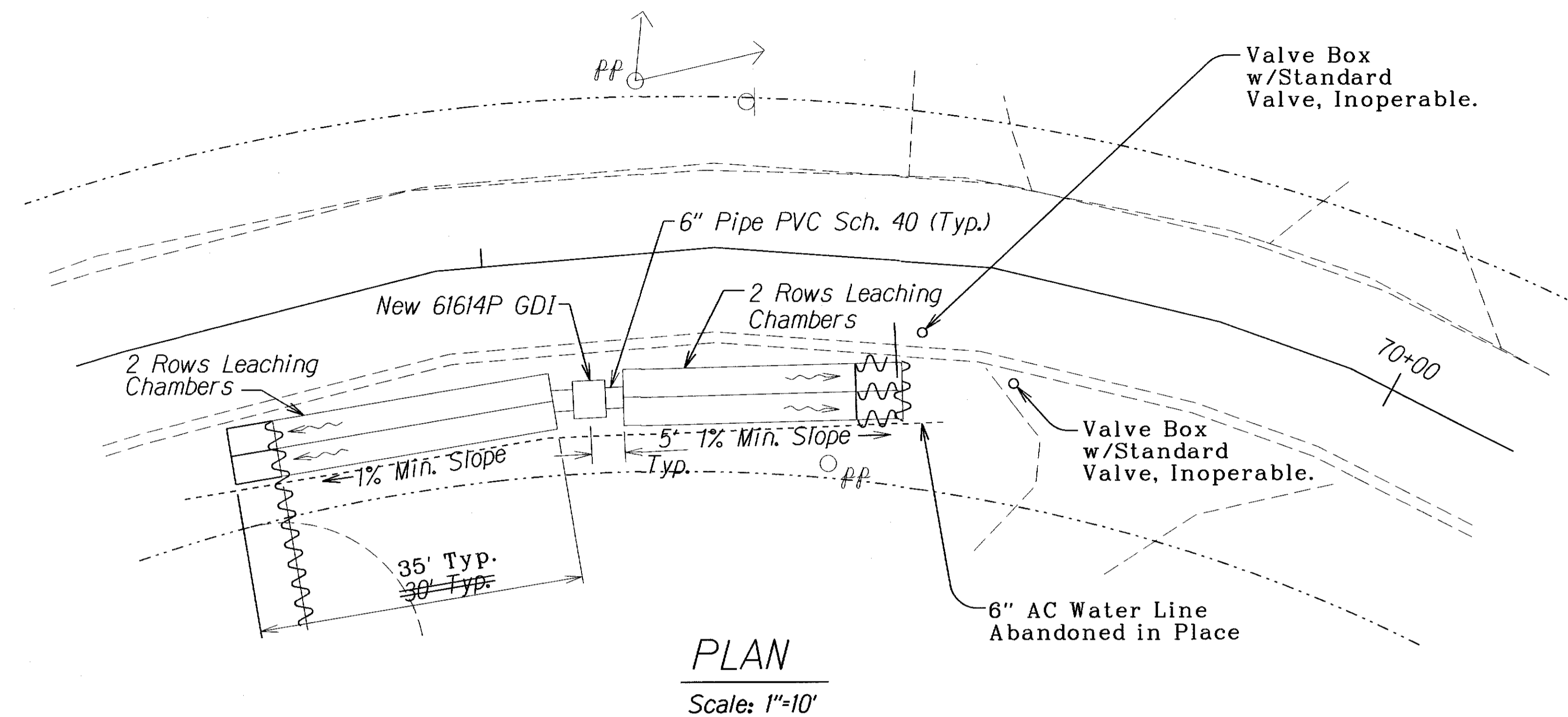
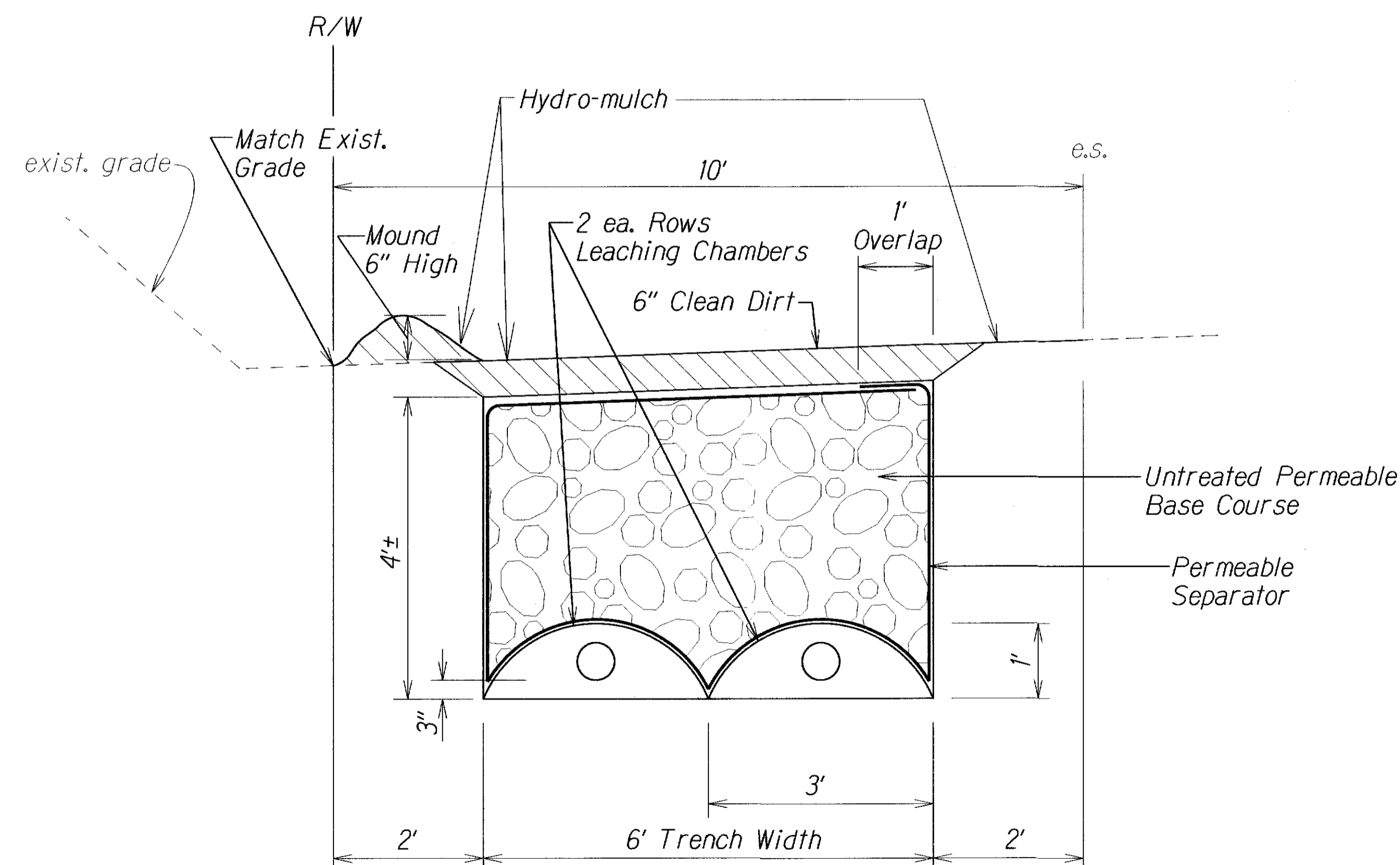


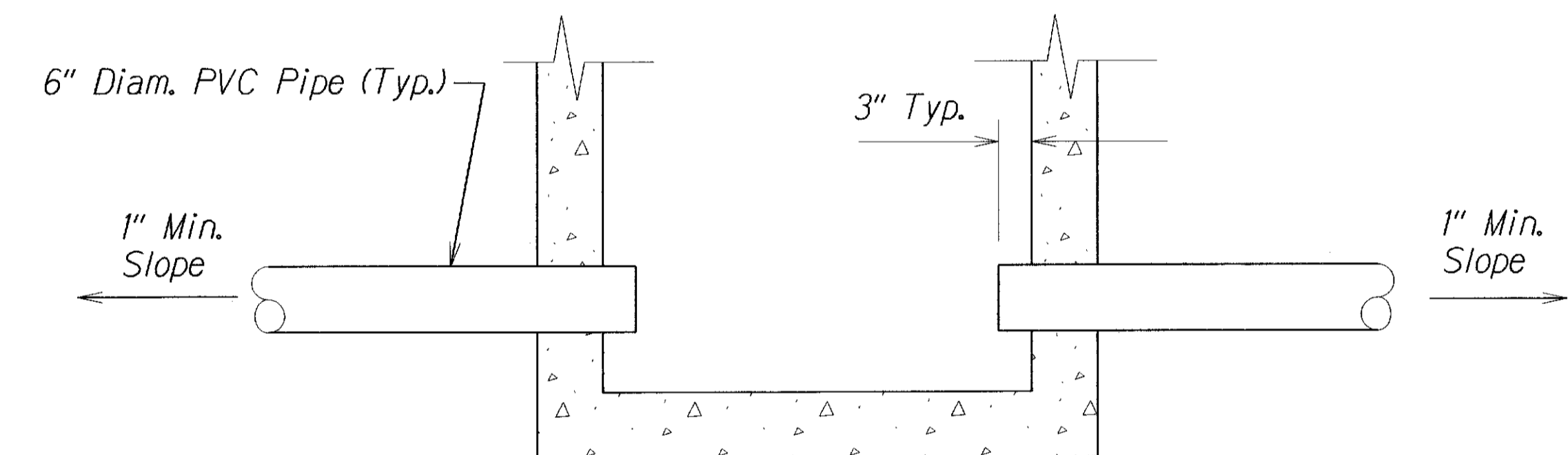
FED. ROAD DIST. NO.	STATE	PROJ. NO.	FISCAL YEAR	SHEET NO.	TOTAL SHEETS
HAWAII	HAW.	560A-01-10M	2010	17	20



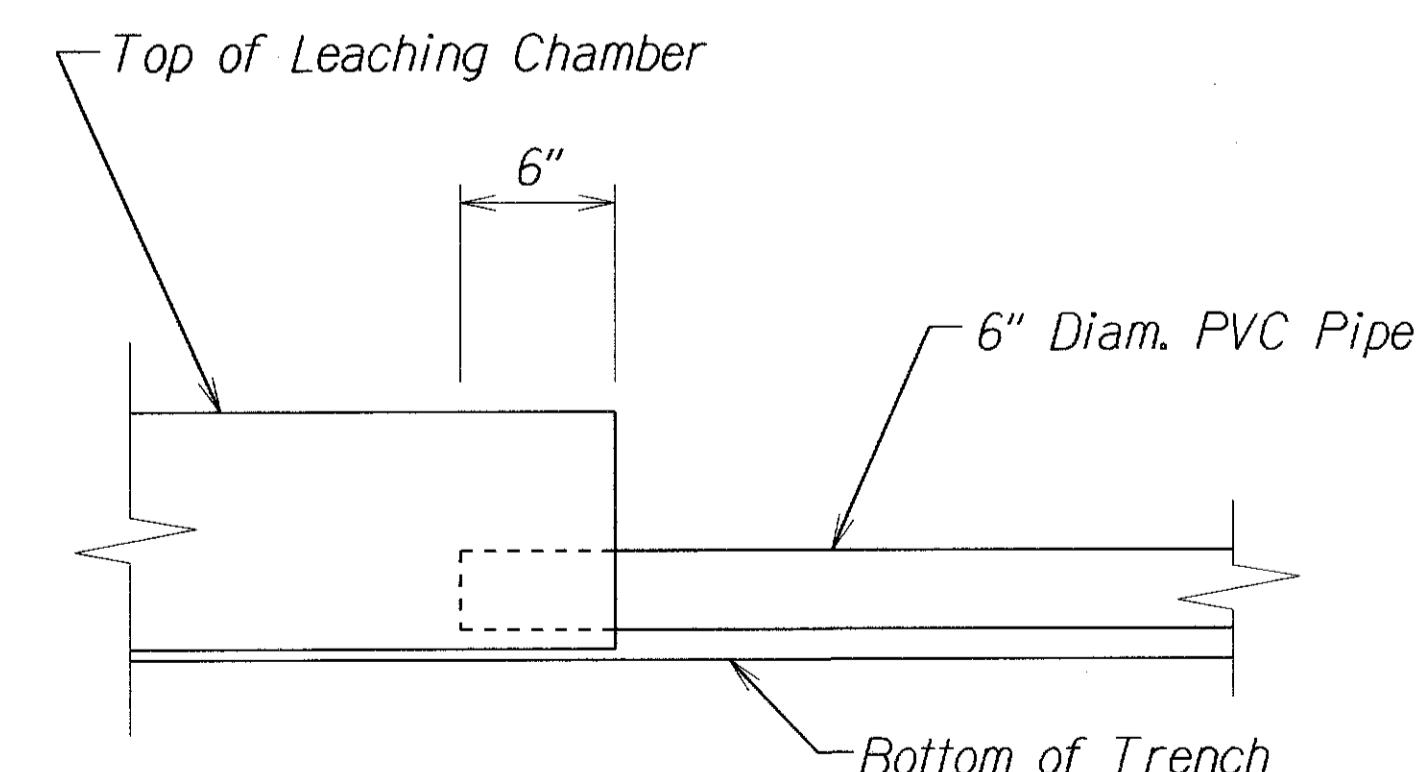
**PVC PIPE OUTLETS AT 61614P GDI**  
Not to Scale



**TYPICAL SECTION 6' WIDE DRAINAGE SYSTEM**  
# Sta. 68+75 to # Sta. 69+45 O/S Rt.  
Not to Scale



**SECTION A 15/15**  
Not to Scale



**PVC PIPE OUTLET AT LEACHING CHAMBER**  
Not to Scale

LEGEND FOR AS-BUILT POSTINGS	
	Squiggly line for as-built deletion
	Double line for as-built deletion
Roadway	Text for as-built posting

STATE OF HAWAII DEPARTMENT OF TRANSPORTATION HIGHWAYS DIVISION	
<b><u>DRAINAGE DETAILS</u></b>	
KUHIO HIGHWAY PAVEMENT REPAIRS Kee Beach to Hanalei Project No. 560A-01-10M	
Scale: As Shown	Date: May 2010
SHEET No. 1 OF 2 SHEETS	

DESIGNED BY	DATE
DRAWN BY	
CHECKED BY	
NOTED BY	
QUANTITIES BY	
CHECKED BY	

Kuhio Highway Existing Condition  
Sta. 237+41 , Sta. 237+91

237+41 50 L.F. 237+91

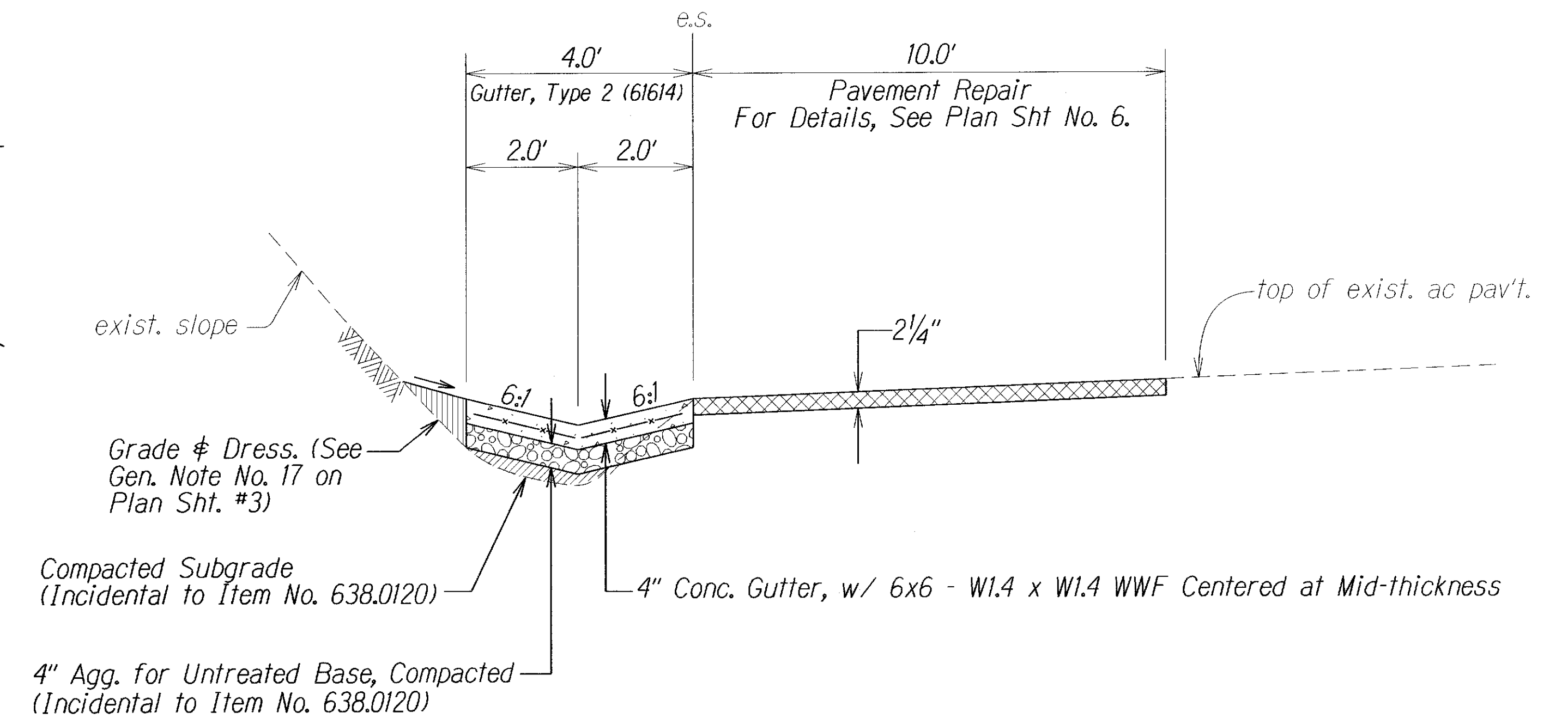
Edge of Road

Swale

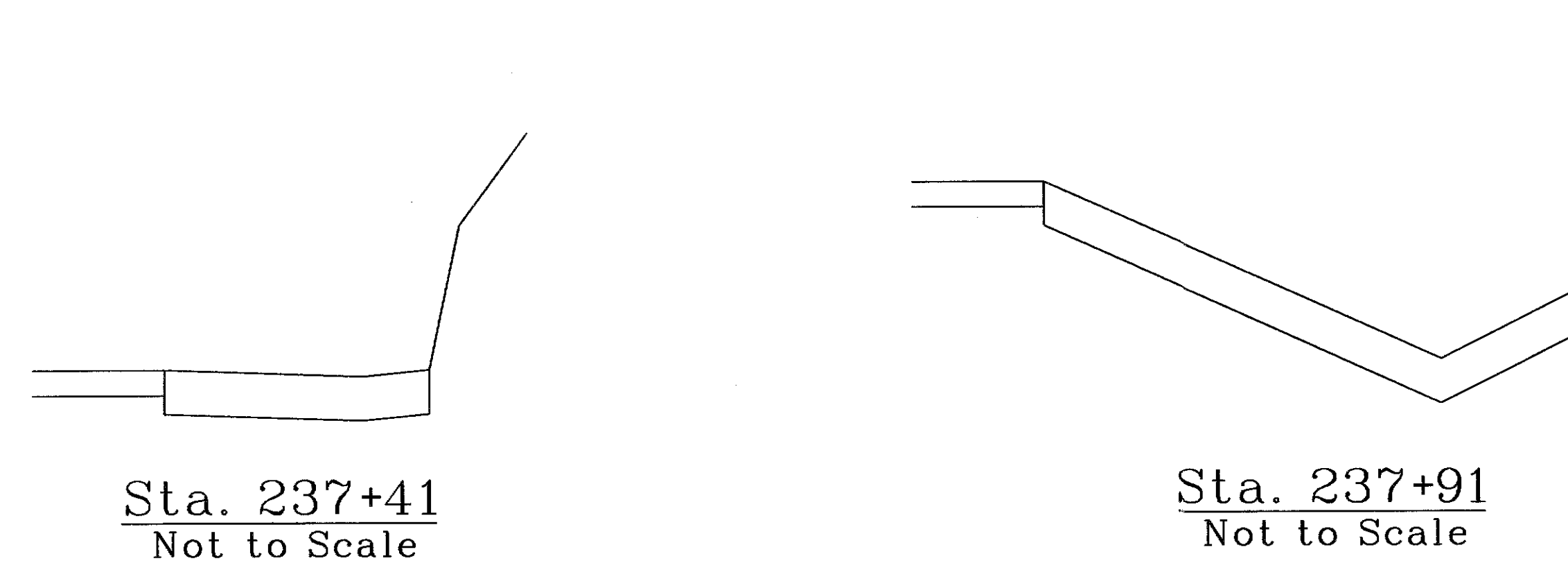
Drain



Sta. 237+41  
Not to Scale

Sta. 237+91  
Not to Scale



Recomended Section  
Sta. 237+41 , Sta. 237+91



<div style="text-align: center;"> <u>LEGEND FOR</u>  <u>AS-BUILT POSTINGS</u> </div>	
	Quiggly line for as-built deletion
	Double line for as-built deletion
Roadway	Text for as-built posting

STATE OF HAWAII  
DEPARTMENT OF TRANSPORTATION  
HIGHWAYS DIVISION  
*DRAINAGE DETAILS*

KUHIO HIGHWAY  
PAVEMENT REPAIRS  
Kee Beach to Hanalei  
Project No. 560A-01-10M

Scale: As Shown Date: May 2010

SHEET No. 2 OF 2 SHEETS