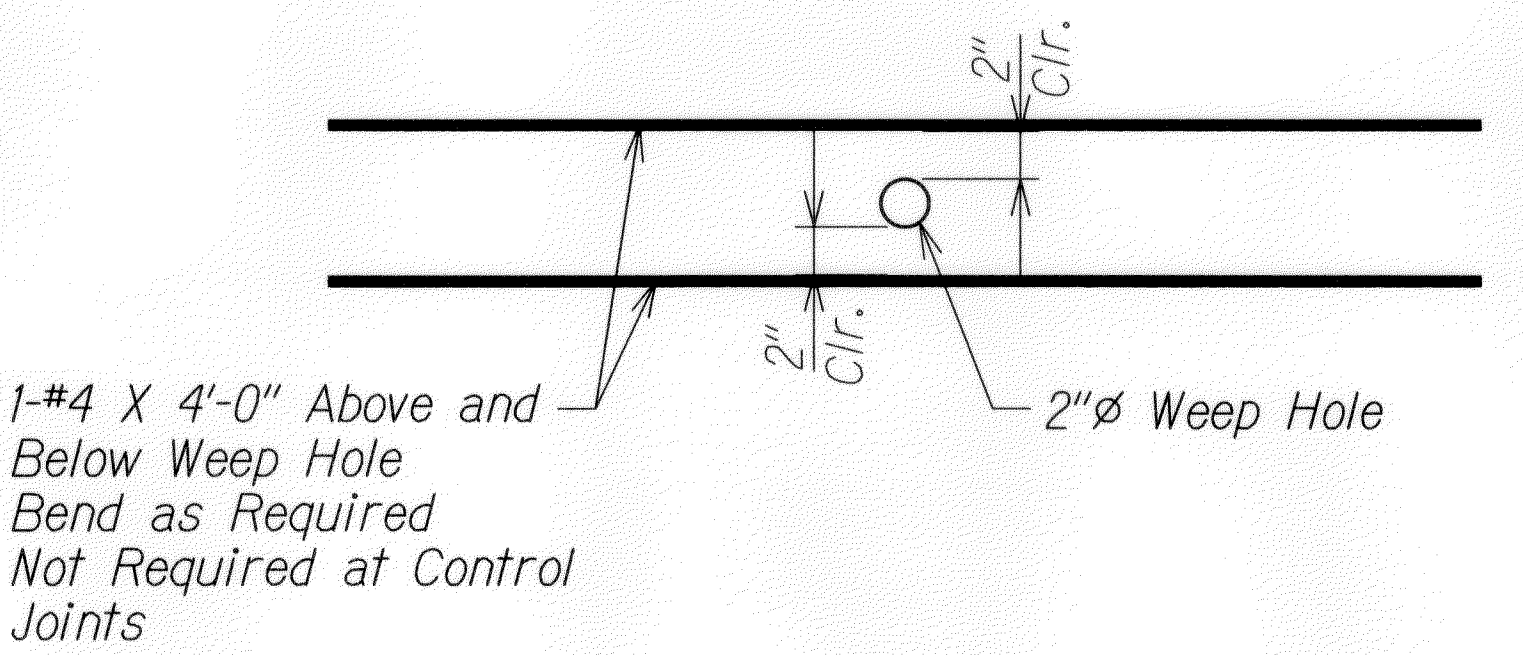
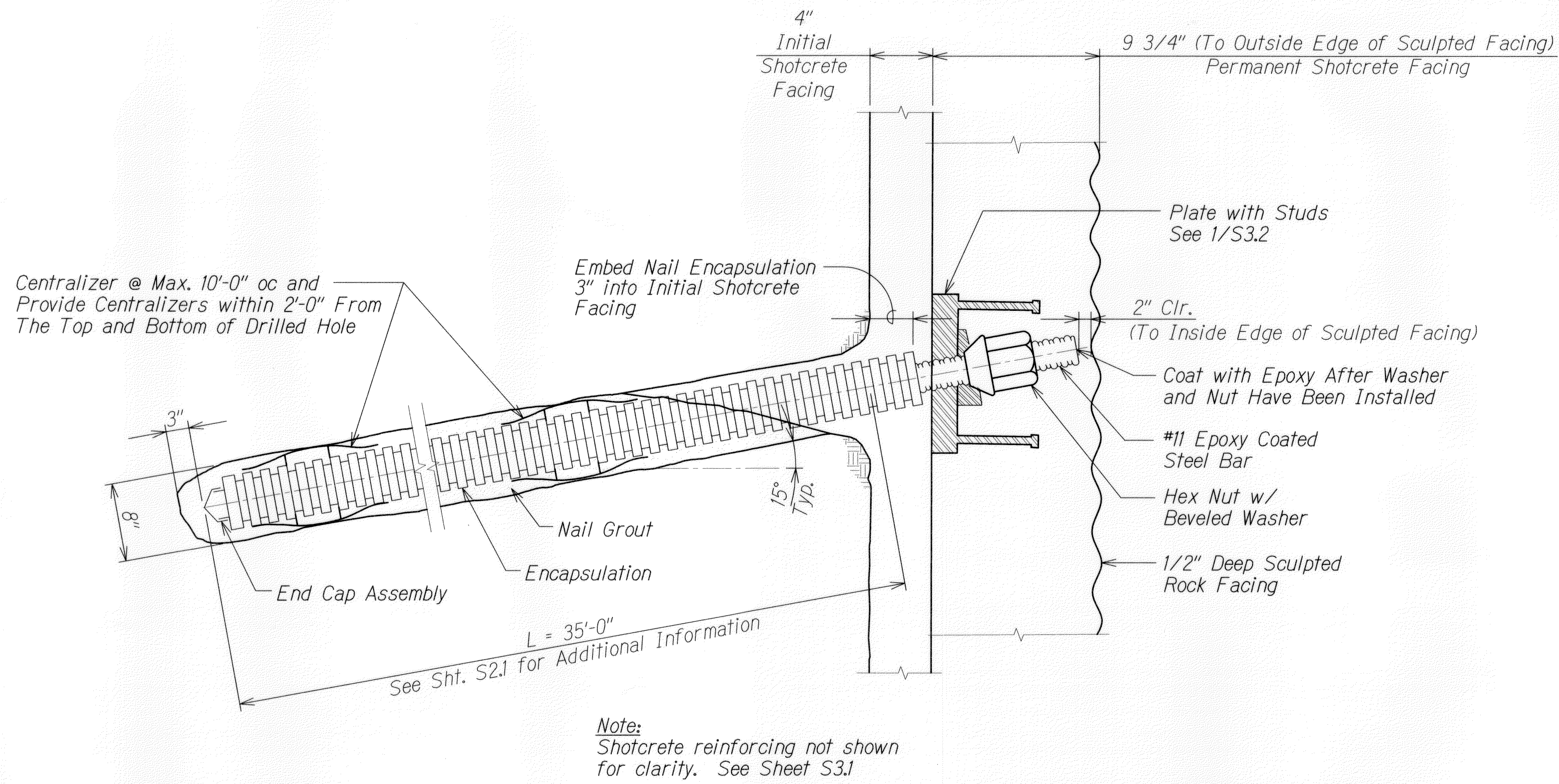


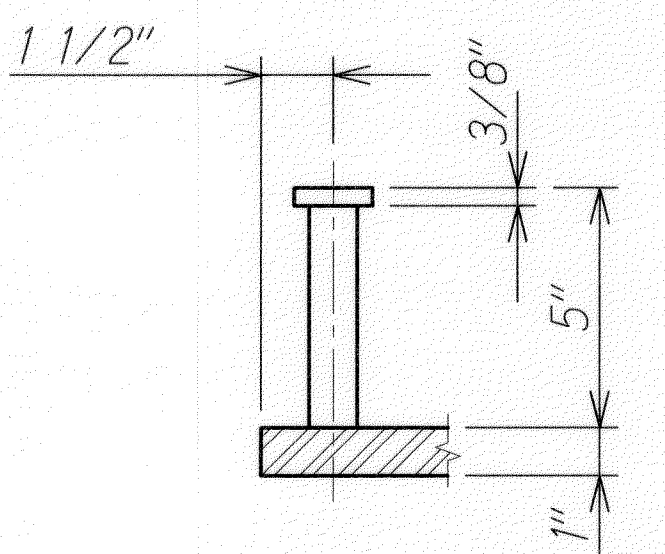
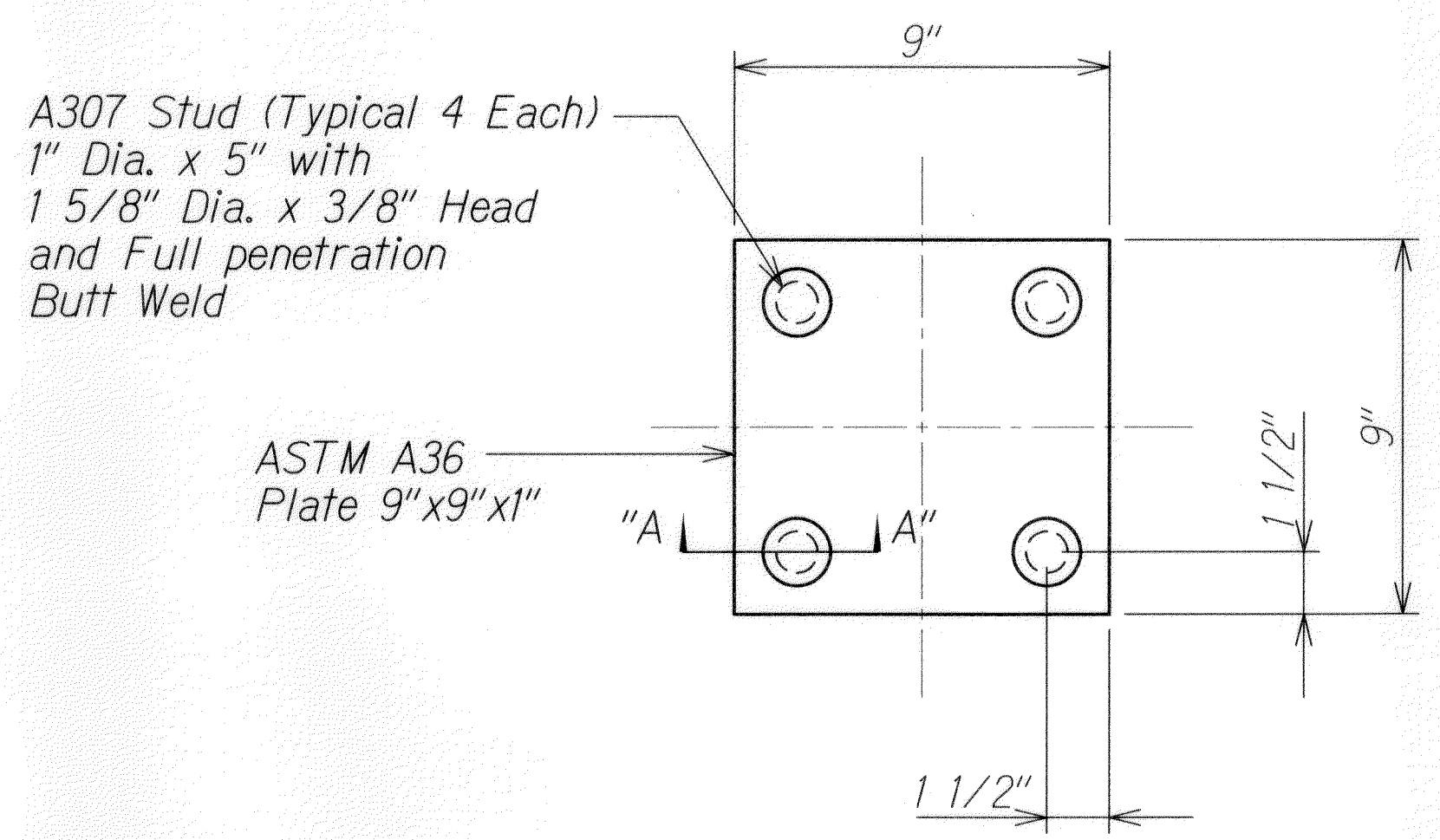
FED. ROAD DIST. NO.	STATE	PROJ. NO.	FISCAL YEAR	SHEET NO.	TOTAL SHEETS
HAWAII	HAW.	560A-02-12	2012	35	36

FINAL



ADDED REINF AT WEEP HOLE
Scale: 1 1/2" = 1'-0"
S3.1 S3.2

ENCAPSULATED PRODUCTION SOIL NAIL DETAIL (TYPE A)
Scale: 1 1/2" = 1'-0"
A S3.2 S3.2



NOTE:
All nuts, washers, plates and studs shall be hot dip galvanized after fabrication.

CONNECTION PLATE WITH STUD DETAIL
Scale: 3" = 1'-0"
1 S3.2 S3.2

ORIGINAL PLAN	DATE
SURVEY PLOTTED BY	
DRAWN BY	
DESIGNED BY	
CHECKED BY	
NOTED BY	
NO.	

DRAWING NAME: Z:\00 ONGOING\10-031-LUMAHAI EMER REPAIR SLOPE MITIGATION\10-17-11\FINAL\LSM-S302.DWG PLOT TIME: 10-14-11, 8:17 AM

DAVID K. FUJIMURA
LICENSED PROFESSIONAL ENGINEER
NO. 8104-S
HAWAII, U.S.A.
THIS WORK WAS PREPARED BY ME OR UNDER MY SUPERVISION.
Signature: David K. Fujimura
APRIL 30, 2012
LIC. EXP. DATE

STATE OF HAWAII
DEPARTMENT OF TRANSPORTATION
HIGHWAYS DIVISION
SOIL NAIL SHOTCRETE WALL
SECTION AND DETAIL
KUHIO HIGHWAY EMERGENCY SLOPE REPAIRS
Vicinity of Lumahai
Project No. 560A-02-12
Scale: As Shown Date: Oct. 17, 2011
SHEET No. S3.2 OF 2 SHEETS