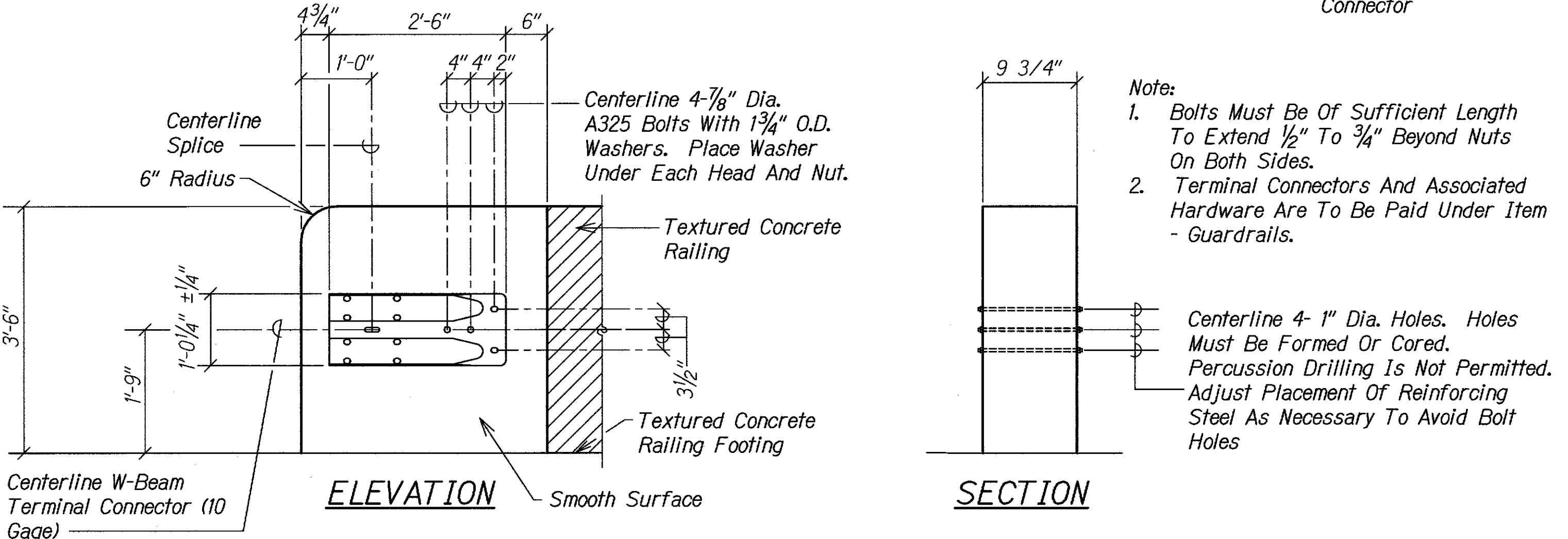
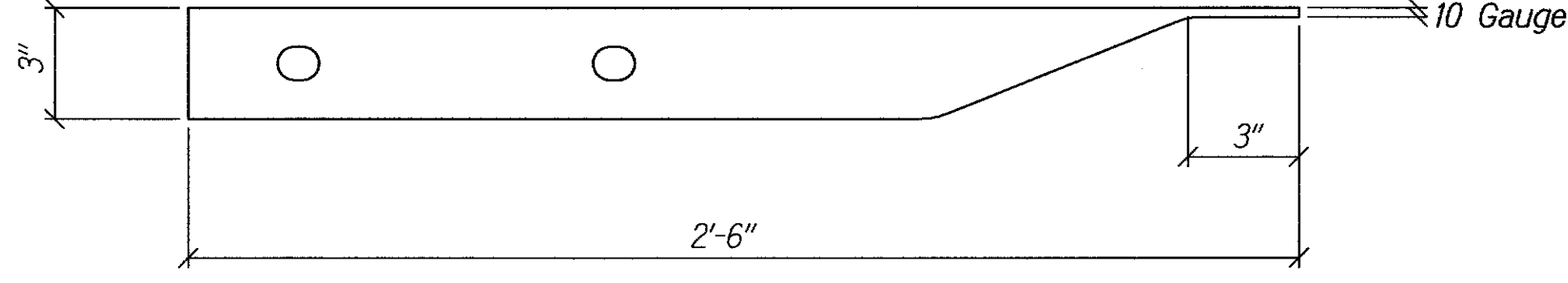
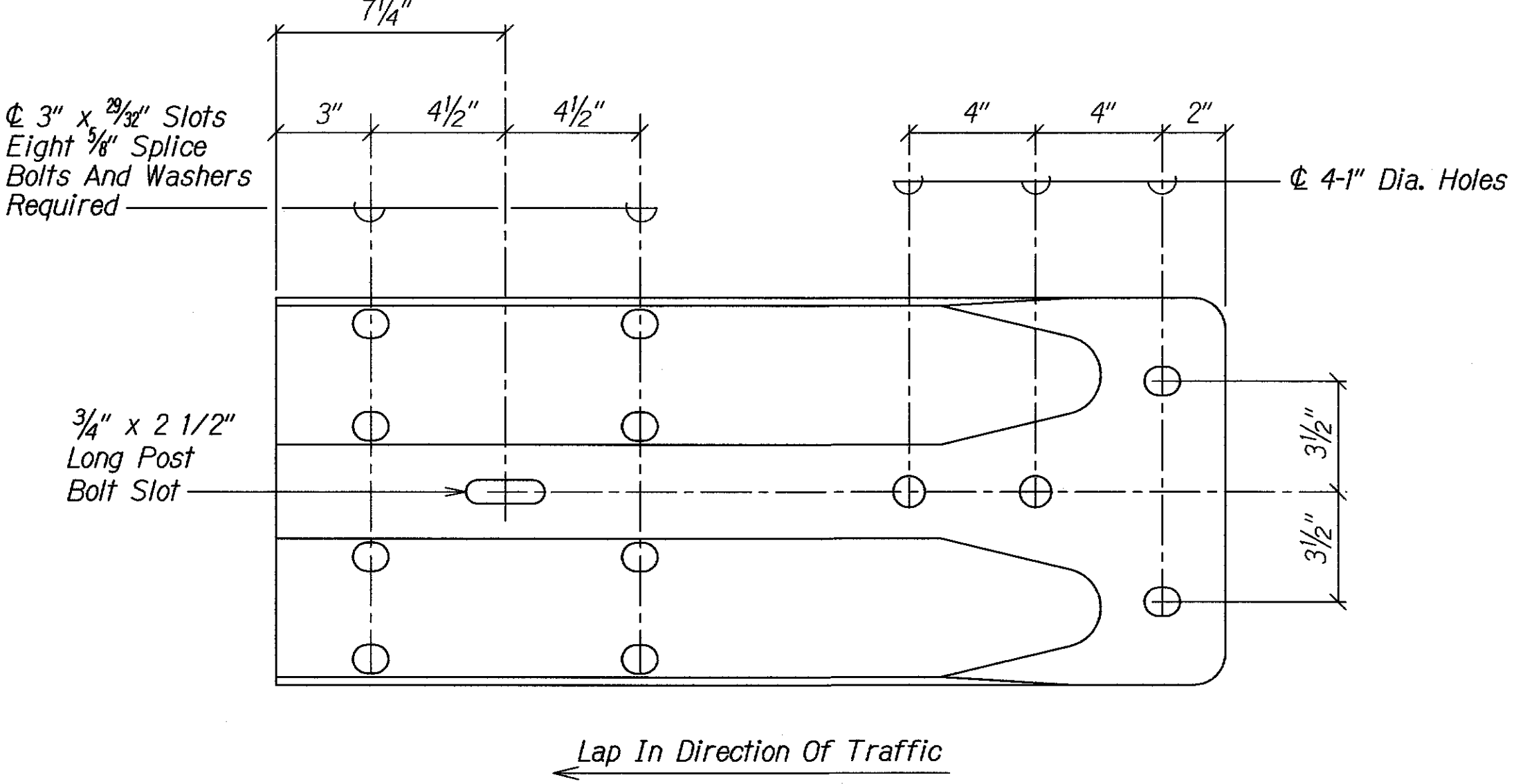


- GENERAL NOTES**
1. Rail element shall meet all requirements of AASHTO M-180 except as modified on the plans.
 2. Button Head Post Bolts (A307) shall be of sufficient length to extend through the full thickness of the nut and no more than 3/4" beyond it. Button Head Splice Bolts (A307) are 5/8" x 1 1/4" with a 5/8" Double Recessed Nut. Galvanized fittings (bolts, nuts, and washers) shall be in accordance with item, "Metal for Structures". Fittings shall be subsidiary to the Bid Item requiring Construction of Transition.
 3. Crown will be widened to accomodate transitions.
 4. Refer to MBGF Standard Sheet for additional details.
 5. Payment for Metal Beam Guardrail Transition (MBGF (TL2)) shall be paid for under Item - Guardrails.

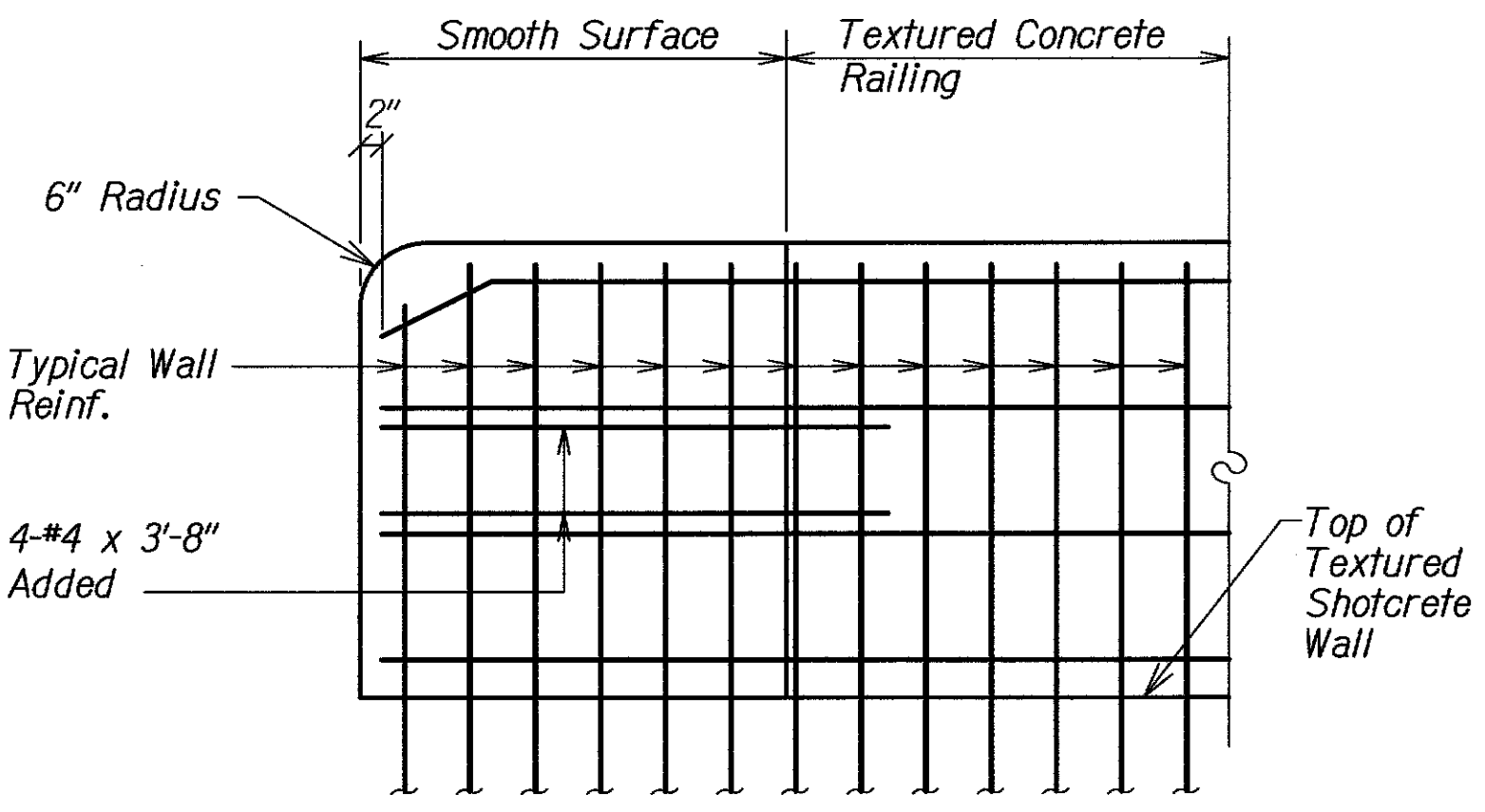


- Note:**
1. Bolts Must Be Of Sufficient Length To Extend 1/2" To 3/4" Beyond Nuts On Both Sides.
 2. Terminal Connectors And Associated Hardware Are To Be Paid Under Item - Guardrails.

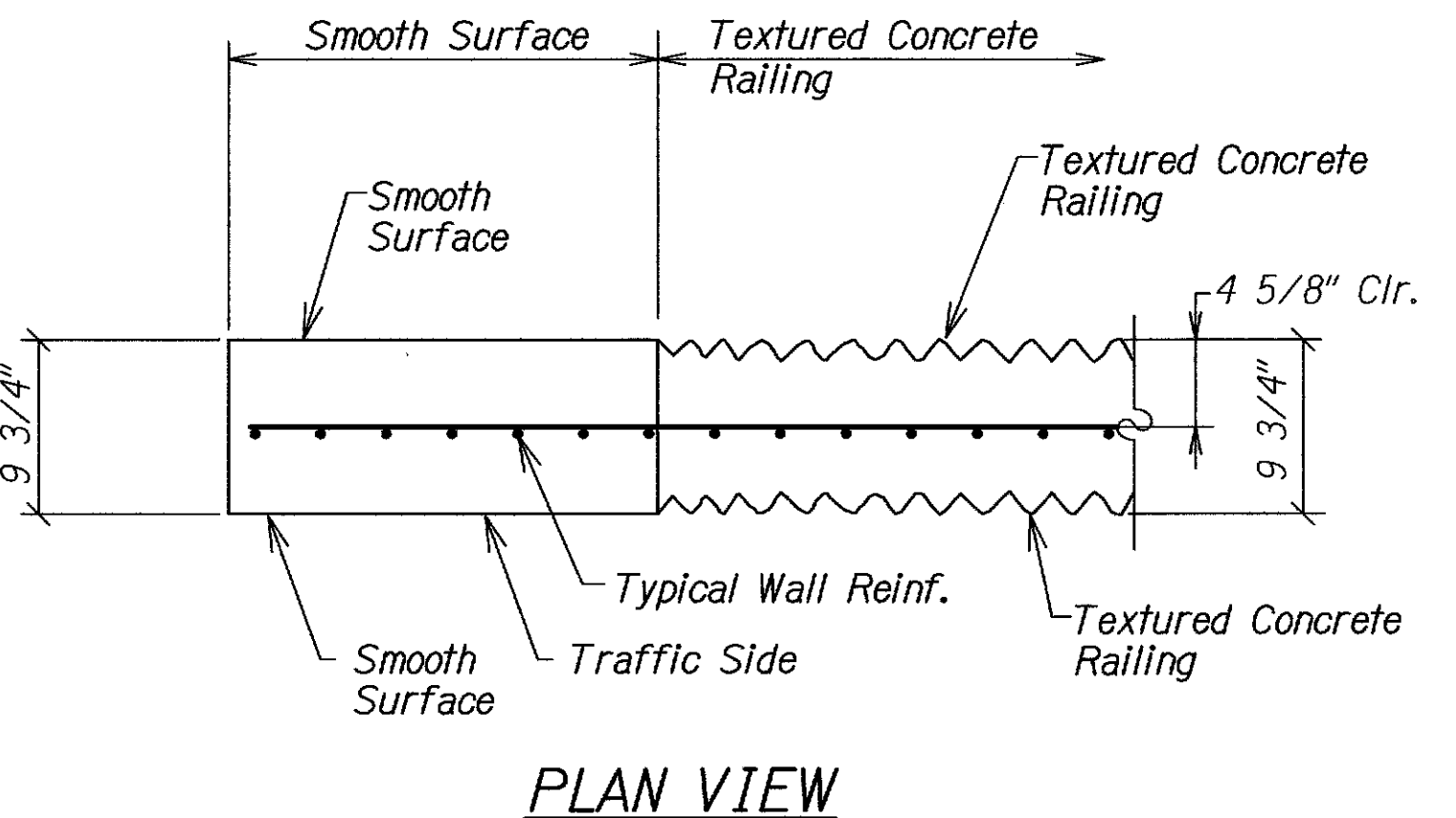
Centerline 4- 1" Dia. Holes. Holes Must Be Formed Or Cored. Percussion Drilling Is Not Permitted. Adjust Placement Of Reinforcing Steel As Necessary To Avoid Bolt Holes



TL-2 TERMINAL CONNECTION DETAILS
Scale: 3/4" = 1'-0"



ELEVATION SHOWING TYPICAL REINFORCING PLACEMENT
Scale: 3/4" = 1'-0"



PLAN VIEW

TERMINAL CONNECTOR
Not To Scale

SURVEY PLOTTED BY	DATE
DRAWN BY	
DESIGNED BY	
CHECKED BY	
NO.	

DRAWING NAME: 21.00 ONGOING 10-031-KUHIO HWY EMER SLOPE REPAIRS LUMAHAI.CAD 07-05-13 ASB 1452-5301B.DWG PLOT TIME: 07-02-13, 1:09 PM

DAVID K. FUJIMURA
LICENSED PROFESSIONAL ENGINEER
NO. 8104-S
HAWAII, U.S.A.

THIS WORK WAS PREPARED BY ME OR UNDER MY SUPERVISION.
Signature: David K. Fujimura
LIC. EXP. DATE: APRIL 30, 2014

STATE OF HAWAII
DEPARTMENT OF TRANSPORTATION
HIGHWAYS DIVISION
W BEAM TO CONCRETE RAILING
CONNECTION DETAILS
KUHIU HIGHWAY EMERGENCY SLOPE REPAIRS
Vicinity of Lumahai
Project No. 560A-02-12
Scale: As Shown Date: Oct. 17, 2011
SHEET No. S31B OF 3 SHEETS

