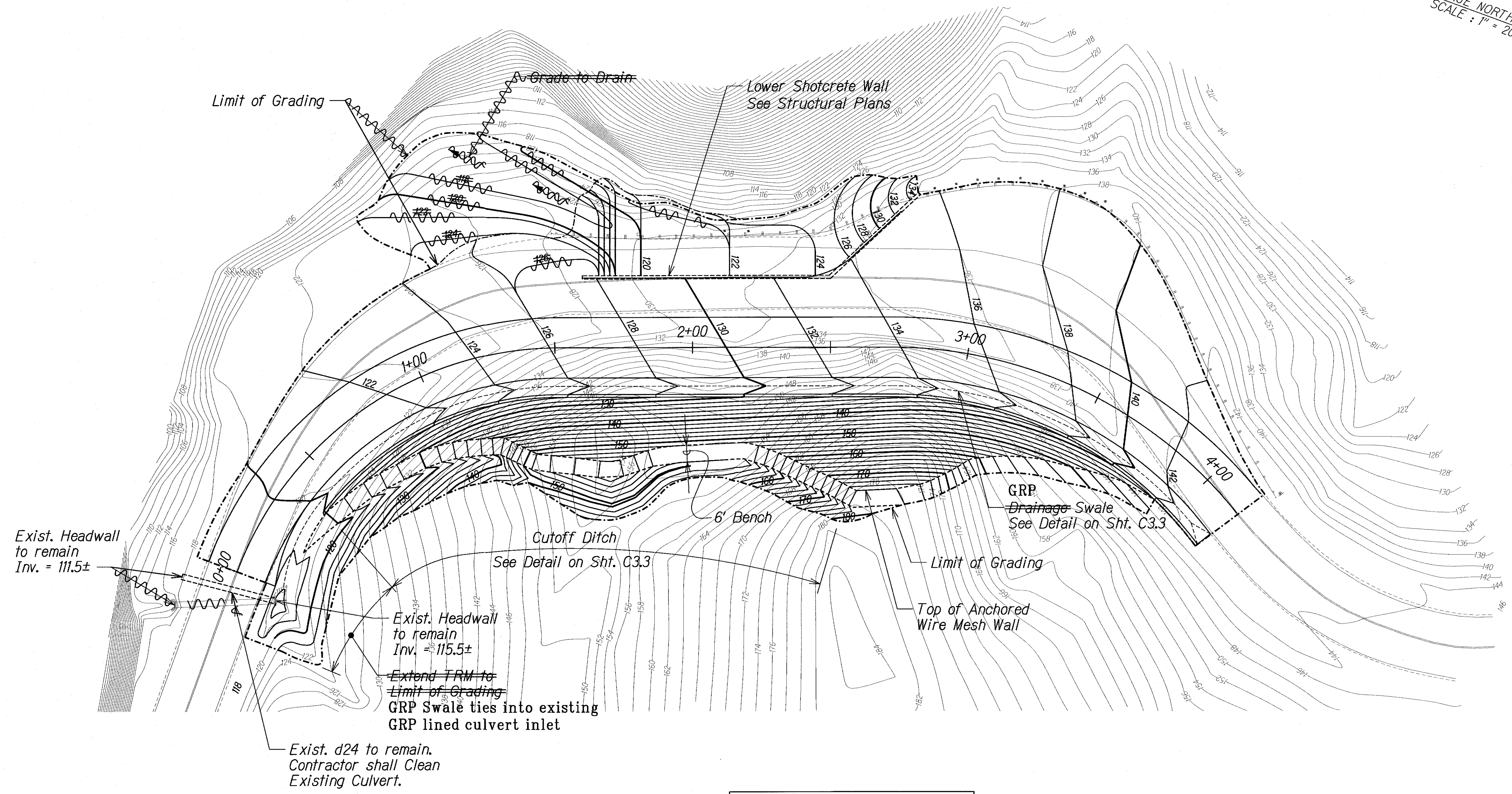


FED. ROAD DIST. NO.	STATE	PROJ. NO.	FISCAL YEAR	SHEET NO.	TOTAL SHEETS
HAWAII	HAW.	560A-02-12	2012	15	36

TRUE NORTH  
SCALE: 1" = 20'



ORIGINAL PLAN	DATE
DESIGNED BY	
CHECKED BY	
NOTED BY	
DATE	

LEGEND FOR AS-BUILT POSTINGS	
	Squiggly line for as-built deletion
	Double line for as-built deletion
Roadway	Text for as-built posting

THIS WORK WAS PREPARED BY ME OR UNDER MY SUPERVISION.

*Pamela K. Uyeda* 04/30/12  
SIGNATURE EXPIRATION DATE OF THE LICENSE

STATE OF HAWAII  
DEPARTMENT OF TRANSPORTATION  
HIGHWAYS DIVISION

**GRADING PLAN**

**KUHIO HIGHWAY EMERGENCY SLOPE REPAIRS**  
Vicinity of Lumahai

Project No. 560A-02-12  
Scale: As Shown Date: Oct. 17, 2011