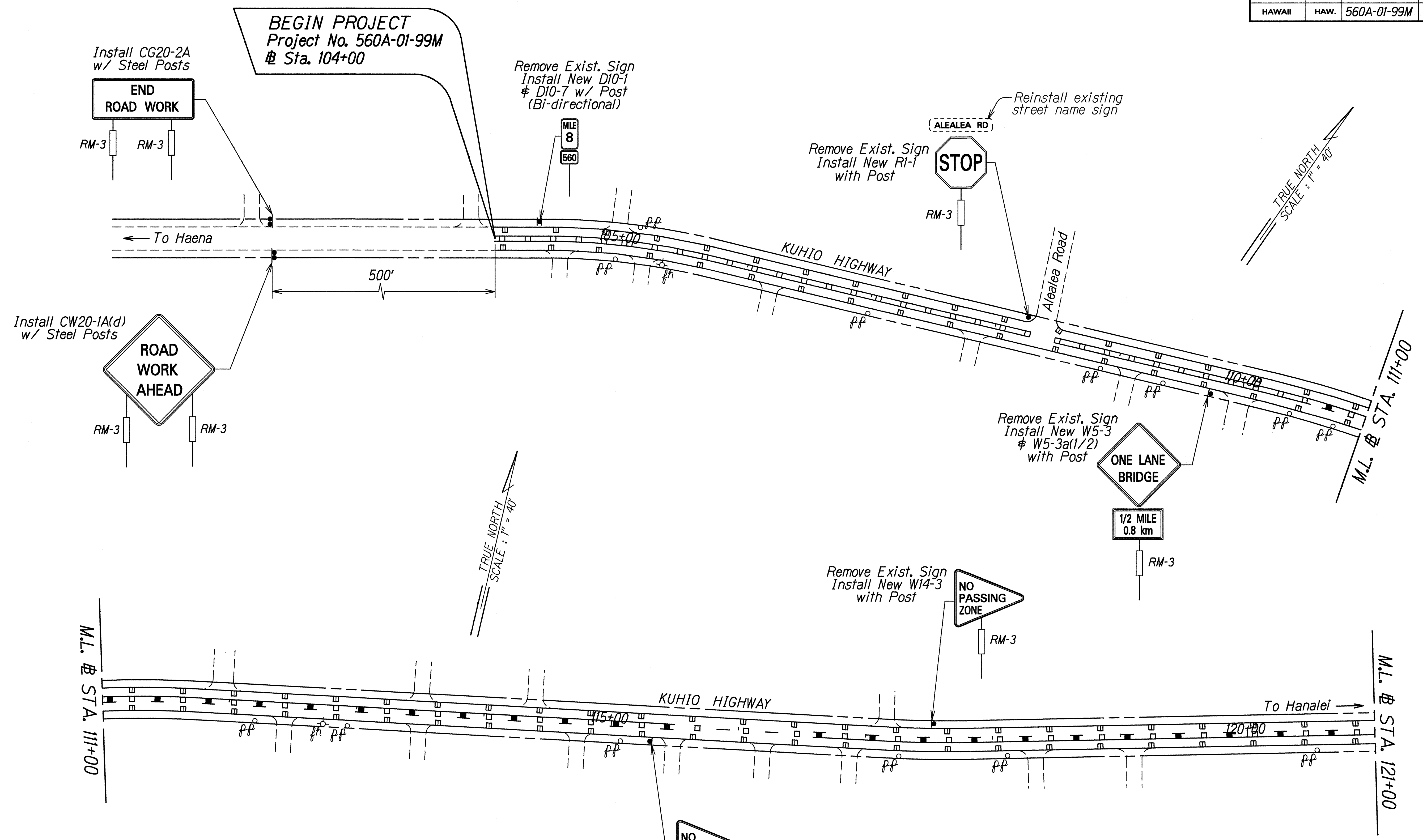


FED. ROAD DIST. NO.	STATE	PROJ. NO.	FISCAL YEAR	SHEET NO.	TOTAL SHEETS
HAWAII	HAW.	560A-01-99M	1999	16	23



DESIGNED BY	DATE
TRACED BY	2/1/99
DESIGNED BY	
QUANTITIES BY	
CHECKED BY	
ORIGINAL PLAN	
NOTES	

STATE OF HAWAII  
DEPARTMENT OF TRANSPORTATION  
HIGHWAYS DIVISION

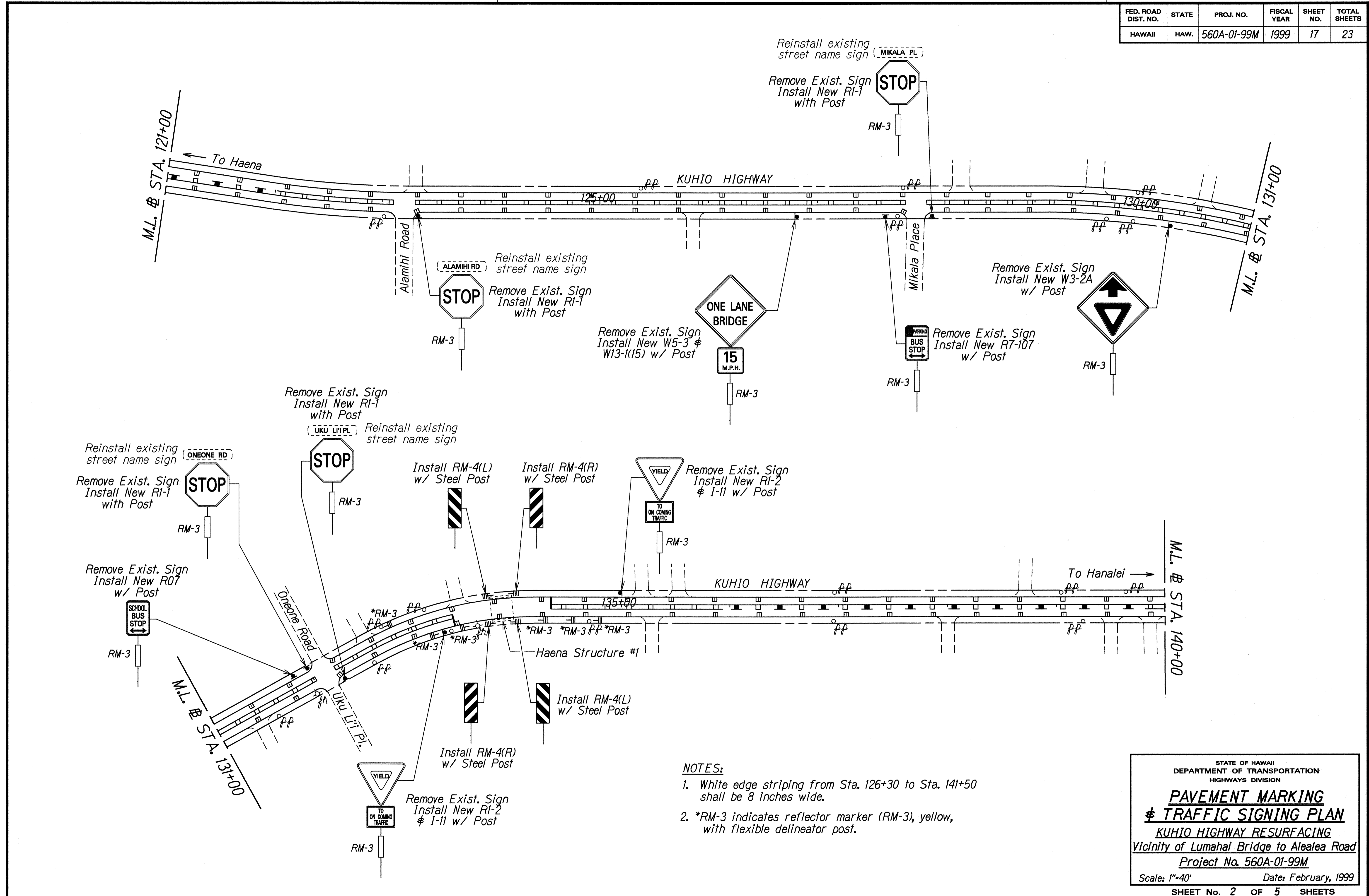
**PAVEMENT MARKING  
& TRAFFIC SIGNING PLAN**

**KUHIO HIGHWAY RESURFACING**  
Vicinity of Lumahai Bridge to Alealea Road  
Project No. 560A-01-99M

Scale: 1"=40' Date: February, 1999

SHEET No. 1 OF 5 SHEETS

FED. ROAD DIST. NO.	STATE	PROJ. NO.	FISCAL YEAR	SHEET NO.	TOTAL SHEETS
HAWAII	HAW.	560A-01-99M	1999	17	23



DATE	2/11/99
SURVEY PLOTTED BY	
DRAWN BY	R. AGO
DESIGNED BY	R. AGO
CHECKED BY	
ORIGINAL PLAN	
NOTE BOOK	
INSTRUMENT	
CHECKED BY	

- NOTES:**
- White edge striping from Sta. 126+30 to Sta. 141+50 shall be 8 inches wide.
  - \*RM-3 indicates reflector marker (RM-3), yellow, with flexible delineator post.

STATE OF HAWAII  
DEPARTMENT OF TRANSPORTATION  
HIGHWAYS DIVISION

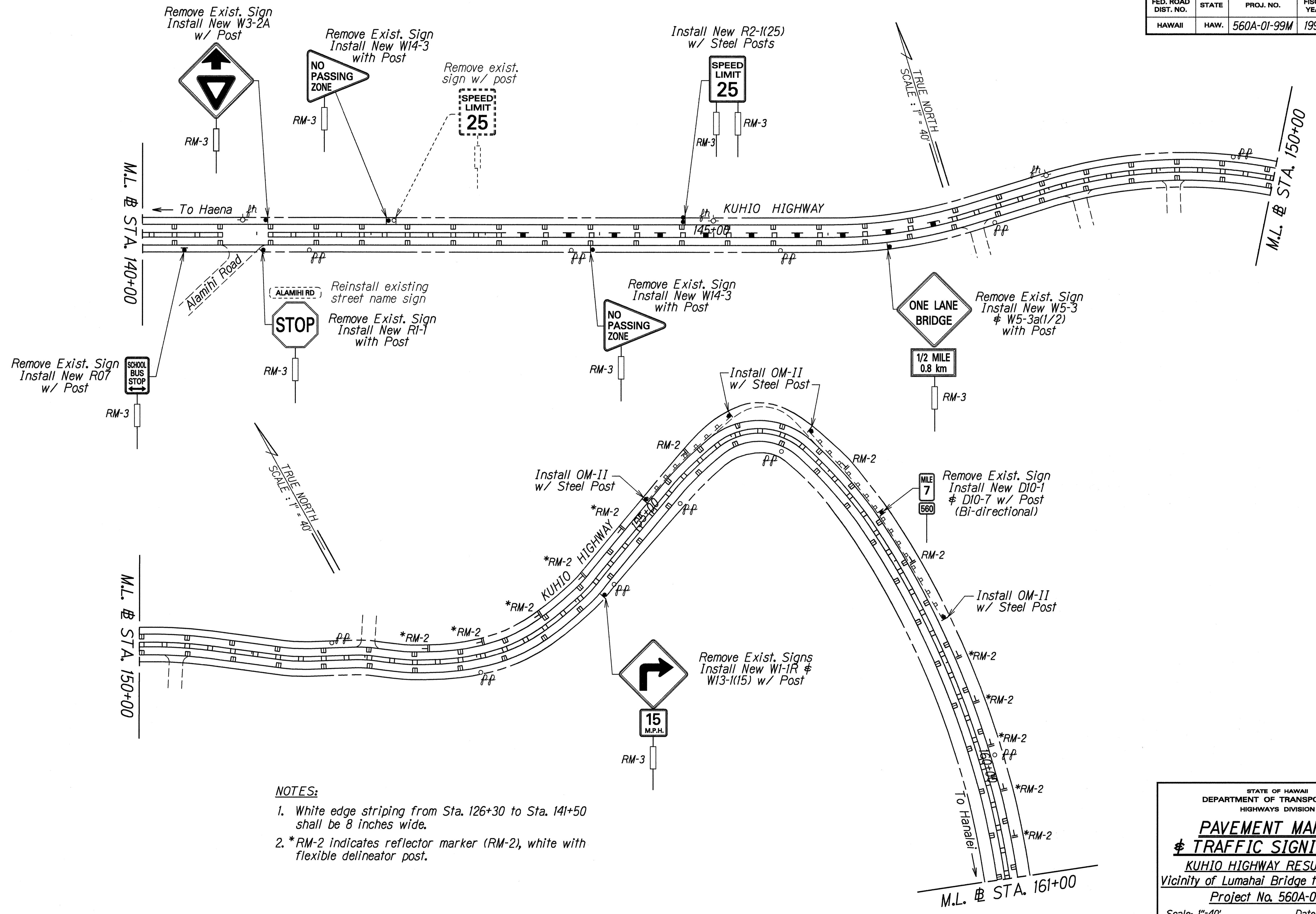
**PAVEMENT MARKING  
& TRAFFIC SIGNING PLAN**

KUHIO HIGHWAY RESURFACING  
Vicinity of Lumahai Bridge to Alealea Road  
Project No. 560A-01-99M

Scale: 1"=40' Date: February, 1999

SHEET No. 2 OF 5 SHEETS

FED. ROAD DIST. NO.	STATE	PROJ. NO.	FISCAL YEAR	SHEET NO.	TOTAL SHEETS
HAWAII	HAW.	560A-01-99M	1999	18	23



- NOTES:**
1. White edge striping from Sta. 126+30 to Sta. 141+50 shall be 8 inches wide.
  2. \*RM-2 indicates reflector marker (RM-2), white with flexible delineator post.

SURVEY PLOTTED BY	DATE
DRAWN BY	2/1/99
NOTE BOOK DESIGNED BY	R. ADDO
QUANTITIES BY	
CHECKED BY	
ORIGINAL PLAN	

STATE OF HAWAII  
DEPARTMENT OF TRANSPORTATION  
HIGHWAYS DIVISION

**PAVEMENT MARKING  
& TRAFFIC SIGNING PLAN**

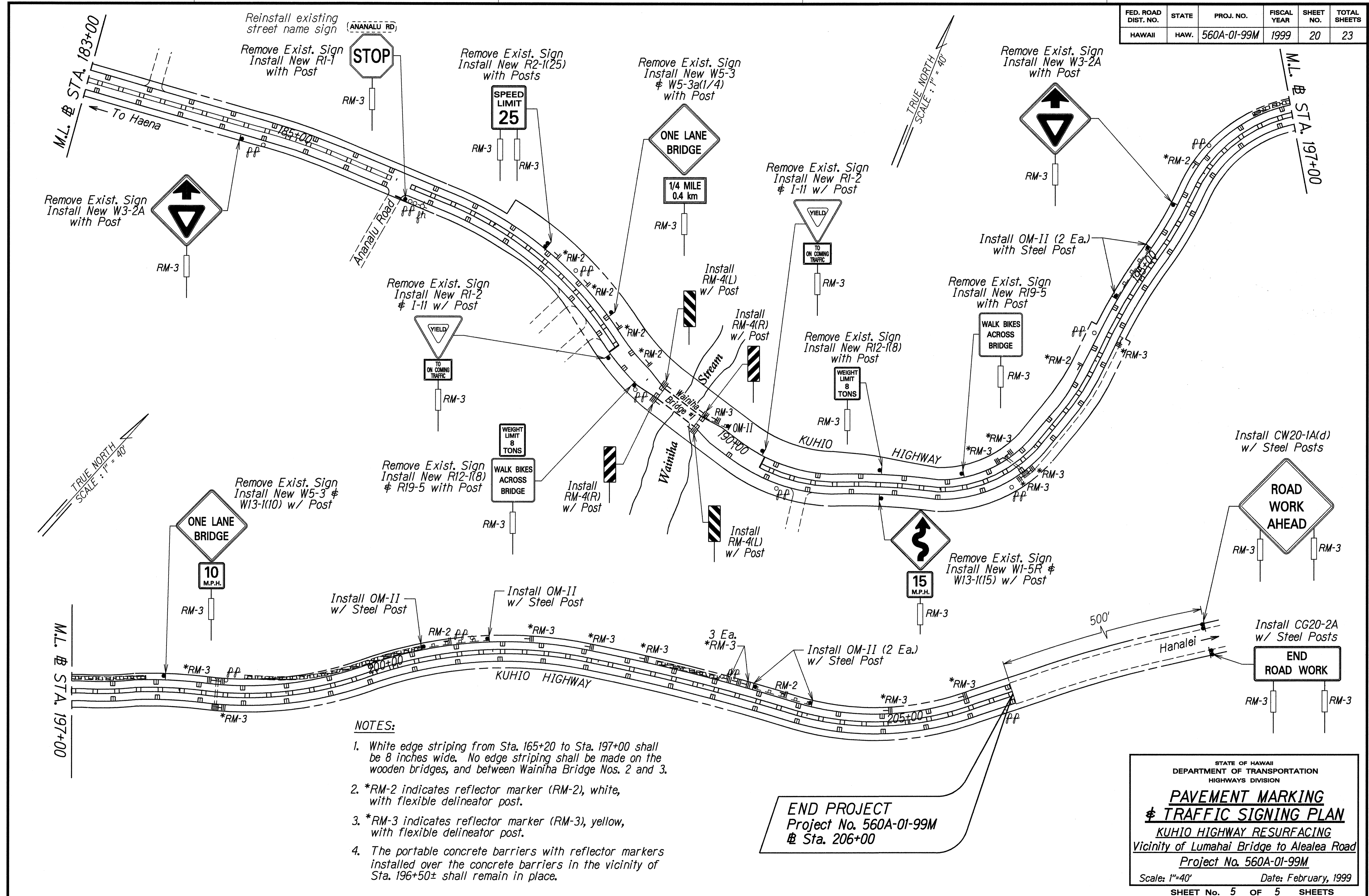
**KUHIO HIGHWAY RESURFACING**  
Vicinity of Lumahai Bridge to Alealea Road  
Project No. 560A-01-99M

Scale: 1"=40' Date: February, 1999

SHEET No. 3 OF 5 SHEETS



FED. ROAD DIST. NO.	STATE	PROJ. NO.	FISCAL YEAR	SHEET NO.	TOTAL SHEETS
HAWAII	HAW.	560A-01-99M	1999	20	23



- NOTES:**
1. White edge striping from Sta. 165+20 to Sta. 197+00 shall be 8 inches wide. No edge striping shall be made on the wooden bridges, and between Wainiha Bridge Nos. 2 and 3.
  2. \*RM-2 indicates reflector marker (RM-2), white, with flexible delineator post.
  3. \*RM-3 indicates reflector marker (RM-3), yellow, with flexible delineator post.
  4. The portable concrete barriers with reflector markers installed over the concrete barriers in the vicinity of Sta. 196+50± shall remain in place.

DATE	2/1/99
DESIGNED BY	R. A. COO
CHECKED BY	PLM/HP/05-dgl
QUANTITIES BY	
DESIGNED BY	
CHECKED BY	
DATE	2/1/99

STATE OF HAWAII  
DEPARTMENT OF TRANSPORTATION  
HIGHWAYS DIVISION

**PAVEMENT MARKING  
& TRAFFIC SIGNING PLAN**

KUHIO HIGHWAY RESURFACING  
Vicinity of Lumahai Bridge to Alealea Road  
Project No. 560A-01-99M

Scale: 1"=40' Date: February, 1999

SHEET No. 5 OF 5 SHEETS