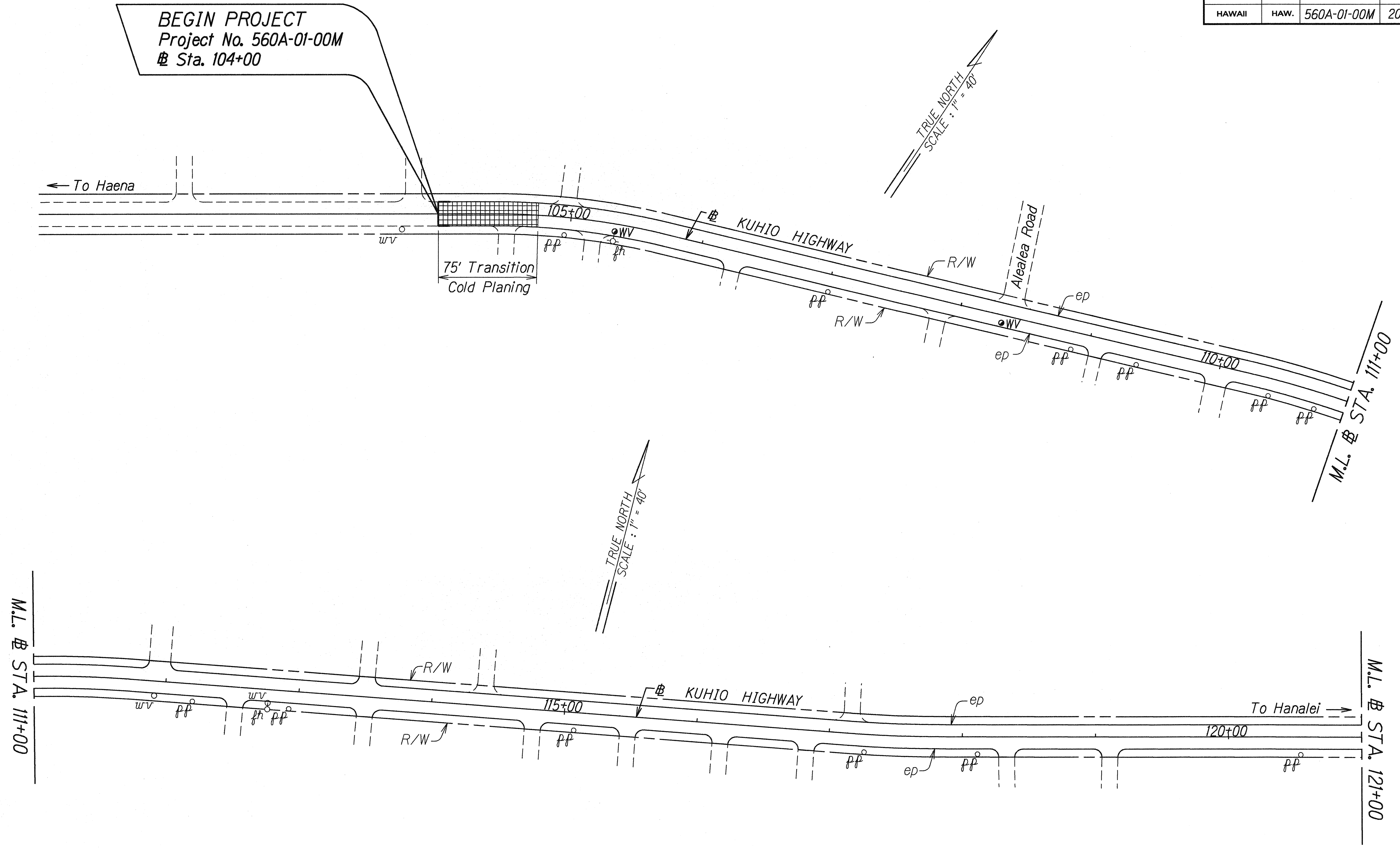


FED. ROAD DIST. NO.	STATE	PROJ. NO.	FISCAL YEAR	SHEET NO.	TOTAL SHEETS
HAWAII	HAW.	560A-01-00M	2000	14	27

BEGIN PROJECT  
Project No. 560A-01-00M  
@ Sta. 104+00



ORIGINAL PLAN	SURVEY PLOTTED BY	DATE
	DRAWN BY	2-10-99
NOTE BOOK	DESIGNED BY	
	CHECKED BY	

de/lanaka/kaui

STATE OF HAWAII  
DEPARTMENT OF TRANSPORTATION  
HIGHWAYS DIVISION

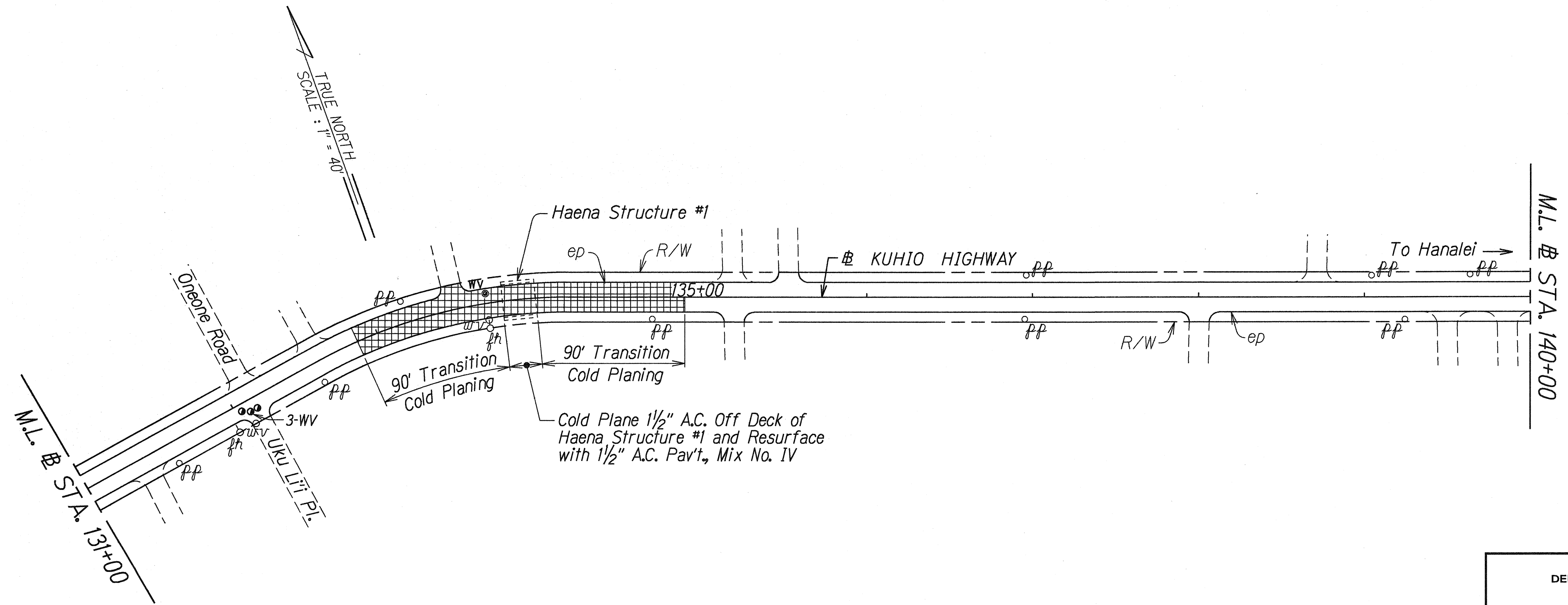
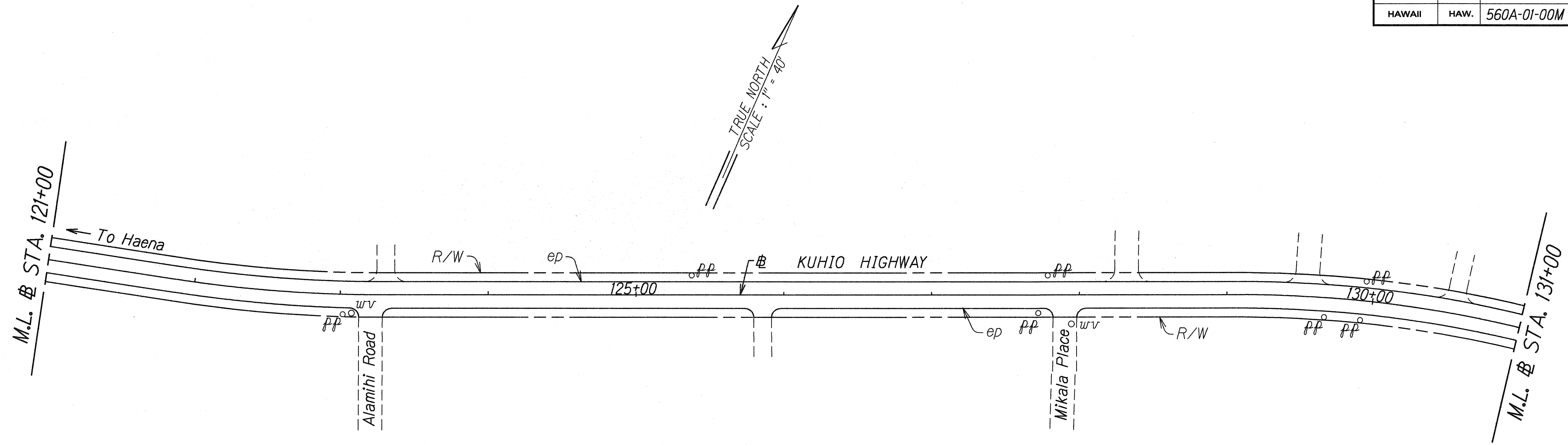
**ROADWAY PLAN**

**KUHIO HIGHWAY RESURFACING**  
Vicinity of Lumahai Bridge to Alealea Road  
Project No. 560A-01-00M

Scale: 1"=40'      Date: December, 1999

SHEET No. 1 OF 5 SHEETS

FED. ROAD DIST. NO.	STATE	PROJ. NO.	FISCAL YEAR	SHEET NO.	TOTAL SHEETS
HAWAII	HAW.	560A-01-00M	2000	15	27



ORIGINAL PLAN  
 SURVEY PLOTTED BY: [ ]  
 DRAWN BY: [ ]  
 DESIGNED BY: [ ]  
 CHECKED BY: [ ]  
 DATE: 2-10-99

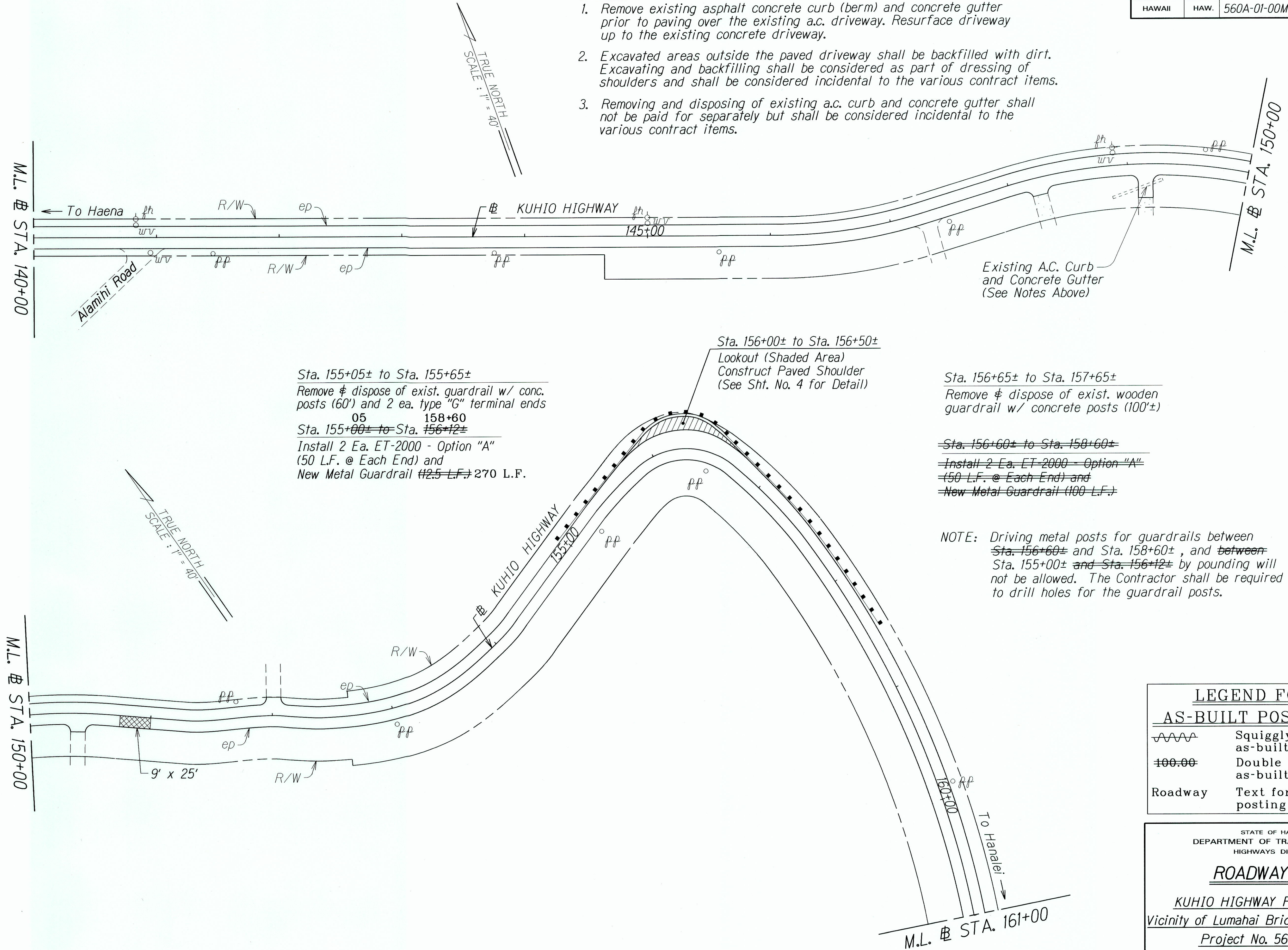
STATE OF HAWAII  
 DEPARTMENT OF TRANSPORTATION  
 HIGHWAYS DIVISION  
**ROADWAY PLAN**  
**KUHIO HIGHWAY RESURFACING**  
 Vicinity of Lumahai Bridge to Alealea Road  
 Project No. 560A-01-00M  
 Scale: 1"=40'      Date: February, 1999  
 SHEET No. 2 OF 5 SHEETS



FED. ROAD DIST. NO.	STATE	PROJ. NO.	FISCAL YEAR	SHEET NO.	TOTAL SHEETS
HAWAII	HAW.	560A-01-00M	2000	16	27

**NOTES:**

1. Remove existing asphalt concrete curb (berm) and concrete gutter prior to paving over the existing a.c. driveway. Resurface driveway up to the existing concrete driveway.
2. Excavated areas outside the paved driveway shall be backfilled with dirt. Excavating and backfilling shall be considered as part of dressing of shoulders and shall be considered incidental to the various contract items.
3. Removing and disposing of existing a.c. curb and concrete gutter shall not be paid for separately but shall be considered incidental to the various contract items.



Sta. 155+05± to Sta. 155+65±  
 Remove & dispose of exist. guardrail w/ conc. posts (60') and 2 ea. type "G" terminal ends  
 05 158+60  
 Sta. 155+00± to Sta. 156+12±  
 Install 2 Ea. ET-2000 - Option "A" (50 L.F. @ Each End) and  
 New Metal Guardrail #2.5 L.F. → 270 L.F.

Sta. 156+00± to Sta. 156+50±  
 Lookout (Shaded Area)  
 Construct Paved Shoulder (See Sht. No. 4 for Detail)

Sta. 156+65± to Sta. 157+65±  
 Remove & dispose of exist. wooden guardrail w/ concrete posts (100'±)

~~Sta. 156+60± to Sta. 158+60±  
 Install 2 Ea. ET-2000 - Option "A" (50 L.F. @ Each End) and  
 New Metal Guardrail (100 L.F.)~~

NOTE: Driving metal posts for guardrails between ~~Sta. 156+60± and Sta. 158+60±~~, and ~~between Sta. 155+00± and Sta. 156+12±~~ by pounding will not be allowed. The Contractor shall be required to drill holes for the guardrail posts.

**LEGEND FOR AS-BUILT POSTINGS**

	Squiggly line for as-built deletion
	Double line for as-built deletion
Roadway	Text for as-built posting

STATE OF HAWAII  
 DEPARTMENT OF TRANSPORTATION  
 HIGHWAYS DIVISION

**ROADWAY PLAN**

KUHIO HIGHWAY RESURFACING  
 Vicinity of Lumahai Bridge to Alealea Road  
 Project No. 560A-01-00M

Scale: 1"=40' Date: December, 1999

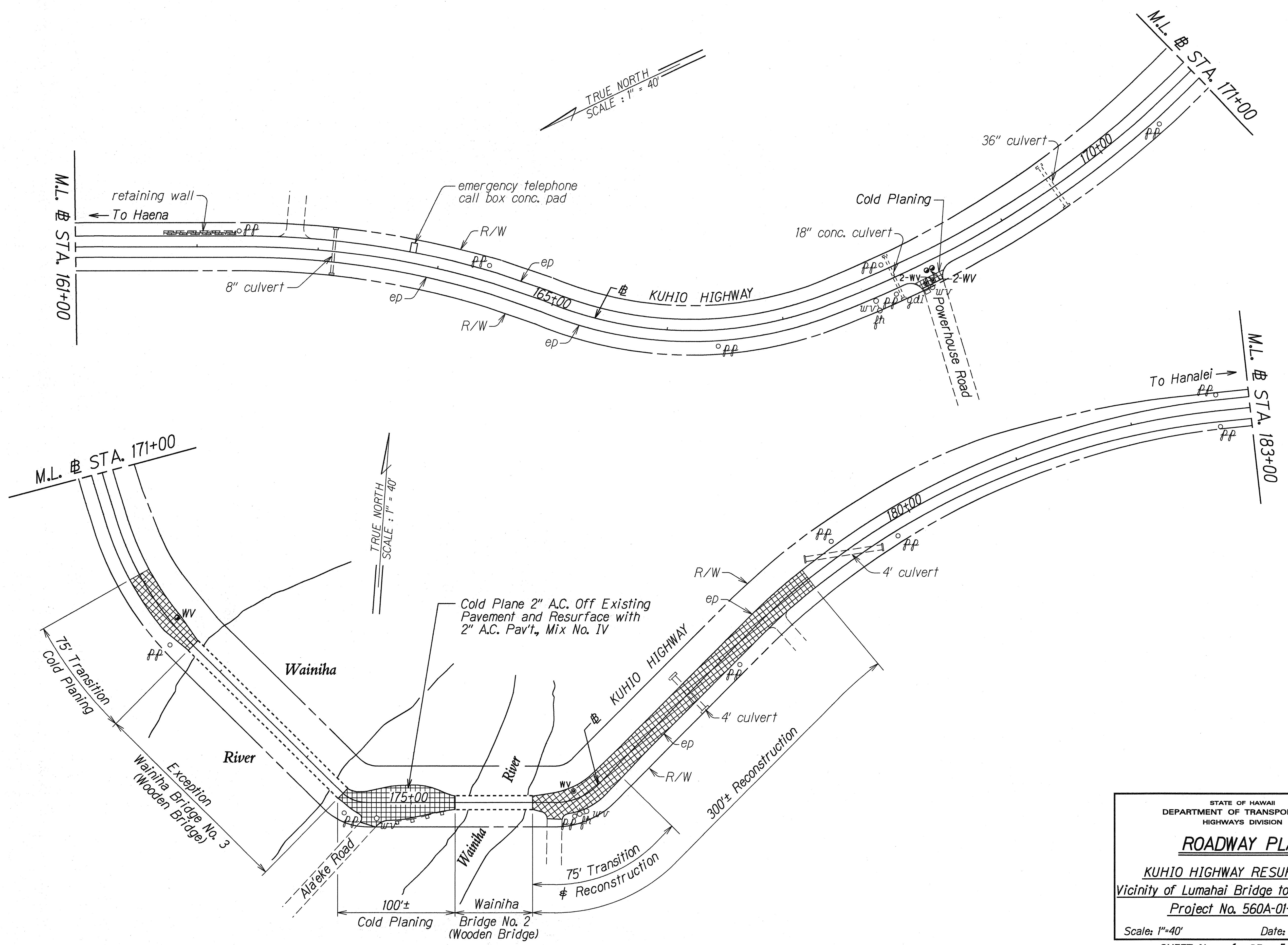
ORIGINAL PLAN	DATE
DESIGNED BY	2/10/99
DRAWN BY	
CHECKED BY	
APPROVED BY	

ddl@hawaii.gov

"AS-BUILT"



FED. ROAD DIST. NO.	STATE	PROJ. NO.	FISCAL YEAR	SHEET NO.	TOTAL SHEETS
HAWAII	HAW.	560A-01-00M	2000	17	27

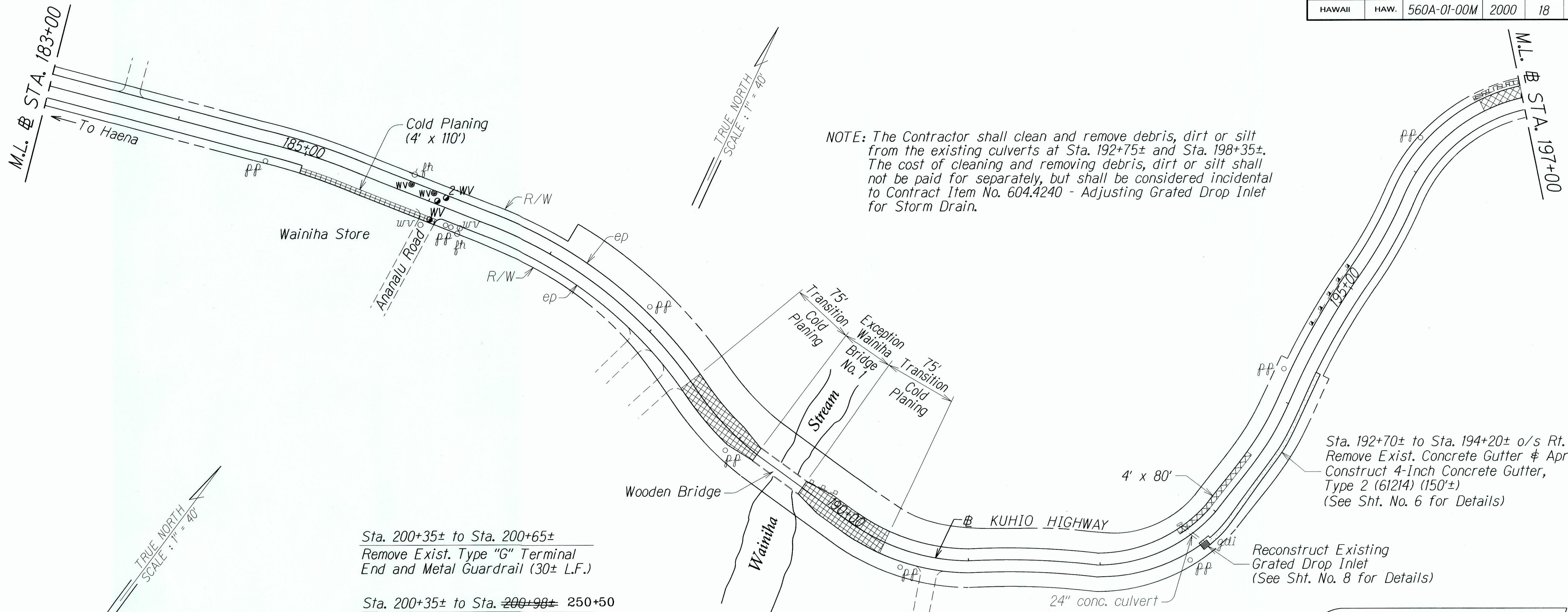


SURVEY PLOTTED BY: DATE: 2-10-99  
 DRAWN BY: R. A. AOB  
 DESIGNED BY: R. A. AOB  
 CHECKED BY: R. A. AOB  
 ORIGINAL PLAN: 2-10-99  
 NOTE: DRAWN BY: R. A. AOB  
 CHECKED BY: R. A. AOB  
 DATE: 2-10-99

STATE OF HAWAII  
 DEPARTMENT OF TRANSPORTATION  
 HIGHWAYS DIVISION  
**ROADWAY PLAN**  
**KUHIO HIGHWAY RESURFACING**  
 Vicinity of Lumahai Bridge to Alealea Road  
 Project No. 560A-01-99M  
 Scale: 1"=40' Date: December, 1999  
 SHEET No. 4 OF 5 SHEETS



FED. ROAD DIST. NO.	STATE	PROJ. NO.	FISCAL YEAR	SHEET NO.	TOTAL SHEETS
HAWAII	HAW.	560A-01-00M	2000	18	27



NOTE: The Contractor shall clean and remove debris, dirt or silt from the existing culverts at Sta. 192+75± and Sta. 198+35±. The cost of cleaning and removing debris, dirt or silt shall not be paid for separately, but shall be considered incidental to Contract Item No. 604.4240 - Adjusting Grated Drop Inlet for Storm Drain.

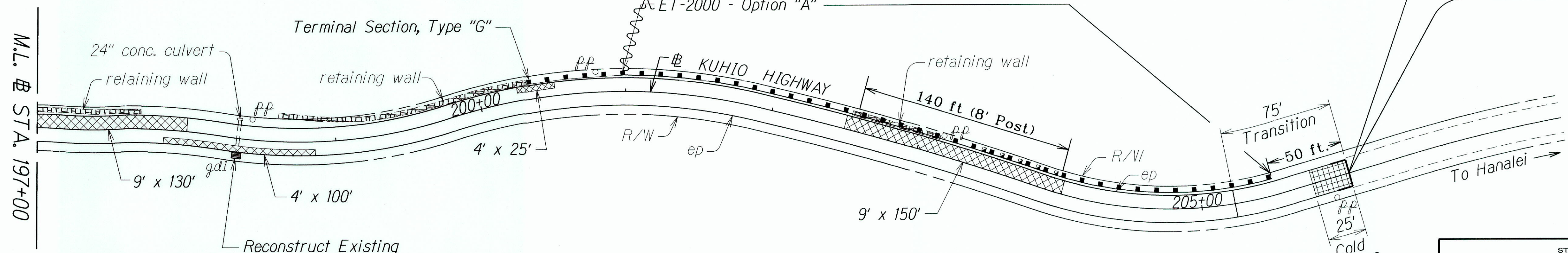
Sta. 200+35± to Sta. 200+65±  
Remove Exist. Type "G" Terminal End and Metal Guardrail (30± L.F.)

Sta. 200+35± to Sta. ~~200+98±~~ 250+50  
Install New Metal Guardrail #2.5± (465 ft)  
Install ET-2000 - Option "A" (50 L.F.)  
and Terminal Section, Type "G"

Sta. 192+70± to Sta. 194+20± o/s Rt.  
Remove Exist. Concrete Gutter & Apron  
Construct 4-Inch Concrete Gutter, Type 2 (61214) (150±)  
(See Sht. No. 6 for Details)

Reconstruct Existing Grated Drop Inlet  
(See Sht. No. 8 for Details)

**END PROJECT**  
Project No. 560A-01-00M  
# Sta. 206+00



Reconstruct Existing Grated Drop Inlet  
(See Sht. No. 8 for Details)

Sta. 203+40 to 203+90  
Remove Exist Guardrail (50ft.)

Note: Driving Metal Post For GR Between Sta. 200+35 to 205+50 By Pounding Shall Not Be Allowed. The Contractor Shall Be Required to Drill Holes For GR Holes. Vibratory Rollers Will Not Be Allowed.

LEGEND FOR AS-BUILT POSTINGS	
	Squiggly line for as-built deletion
	Double line for as-built deletion
Roadway	Text for as-built posting

STATE OF HAWAII  
DEPARTMENT OF TRANSPORTATION  
HIGHWAYS DIVISION

**ROADWAY PLAN**

**KUHIO HIGHWAY RESURFACING**  
Vicinity of Lumahai Bridge to Alealea Road  
Project No. 560A-01-00M

Scale: 1"=40' Date: December, 1999

SHEET No. 5 OF 5 SHEETS

SURVEY PLOTTED BY	DATE
DRAWN BY	2/1/99
DESIGNED BY	
QUANTITIES BY	
CHECKED BY	
ORIGINAL PLAN	
NOTE BOOK	
DATE	
BY	
CHECKED BY	

"AS-BUILT"