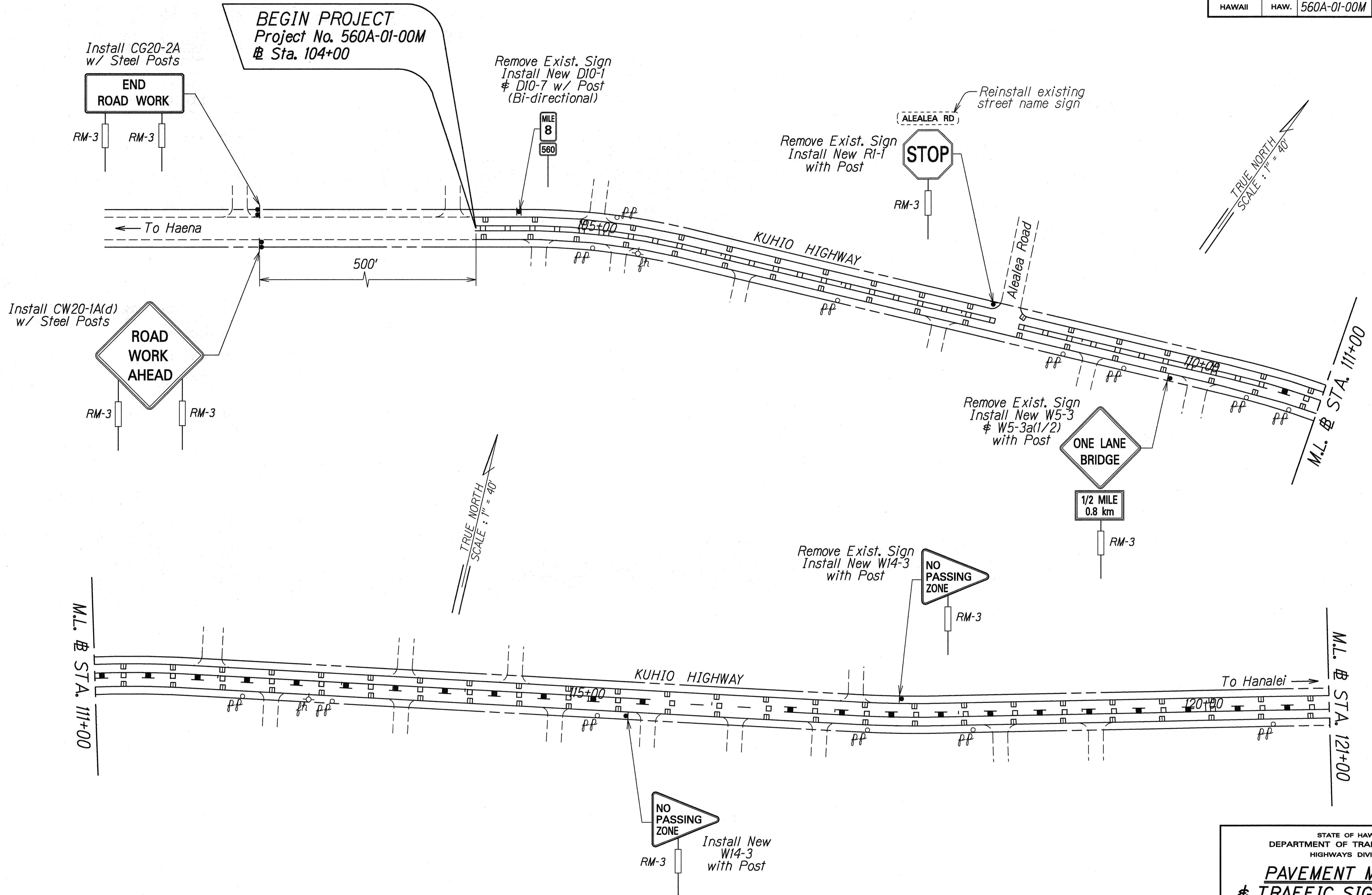


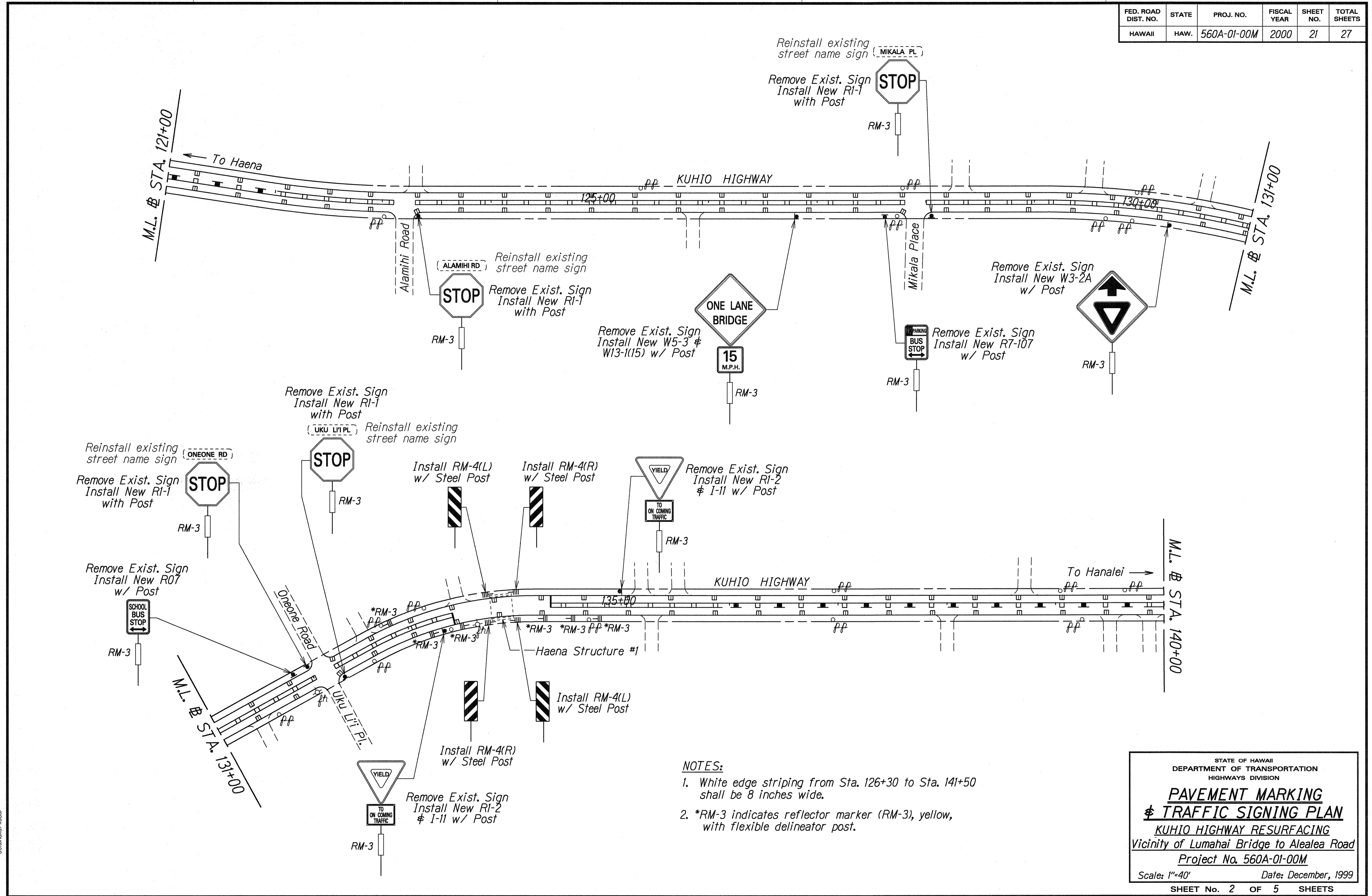
FED. ROAD DIST. NO.	STATE	PROJ. NO.	FISCAL YEAR	SHEET NO.	TOTAL SHEETS
HAWAII	HAW.	560A-01-00M	2000	20	27



ORIGINAL PLAN  
 SURVEY PLOTTED BY: [ ]  
 DATE: 2/1/99  
 DRAWN BY: [ ]  
 CHECKED BY: [ ]  
 DESIGNED BY: [ ]  
 CHECKED BY: [ ]

STATE OF HAWAII  
 DEPARTMENT OF TRANSPORTATION  
 HIGHWAYS DIVISION  
**PAVEMENT MARKING**  
**& TRAFFIC SIGNING PLAN**  
 KUHIO HIGHWAY RESURFACING  
 Vicinity of Lumahai Bridge to Alealea Road  
 Project No. 560A-01-00M  
 Scale: 1"=40' Date: December, 1999  
 SHEET No. 1 OF 5 SHEETS

FED. ROAD DIST. NO.	STATE	PROJ. NO.	FISCAL YEAR	SHEET NO.	TOTAL SHEETS
HAWAII	HAW.	560A-01-00M	2000	21	27

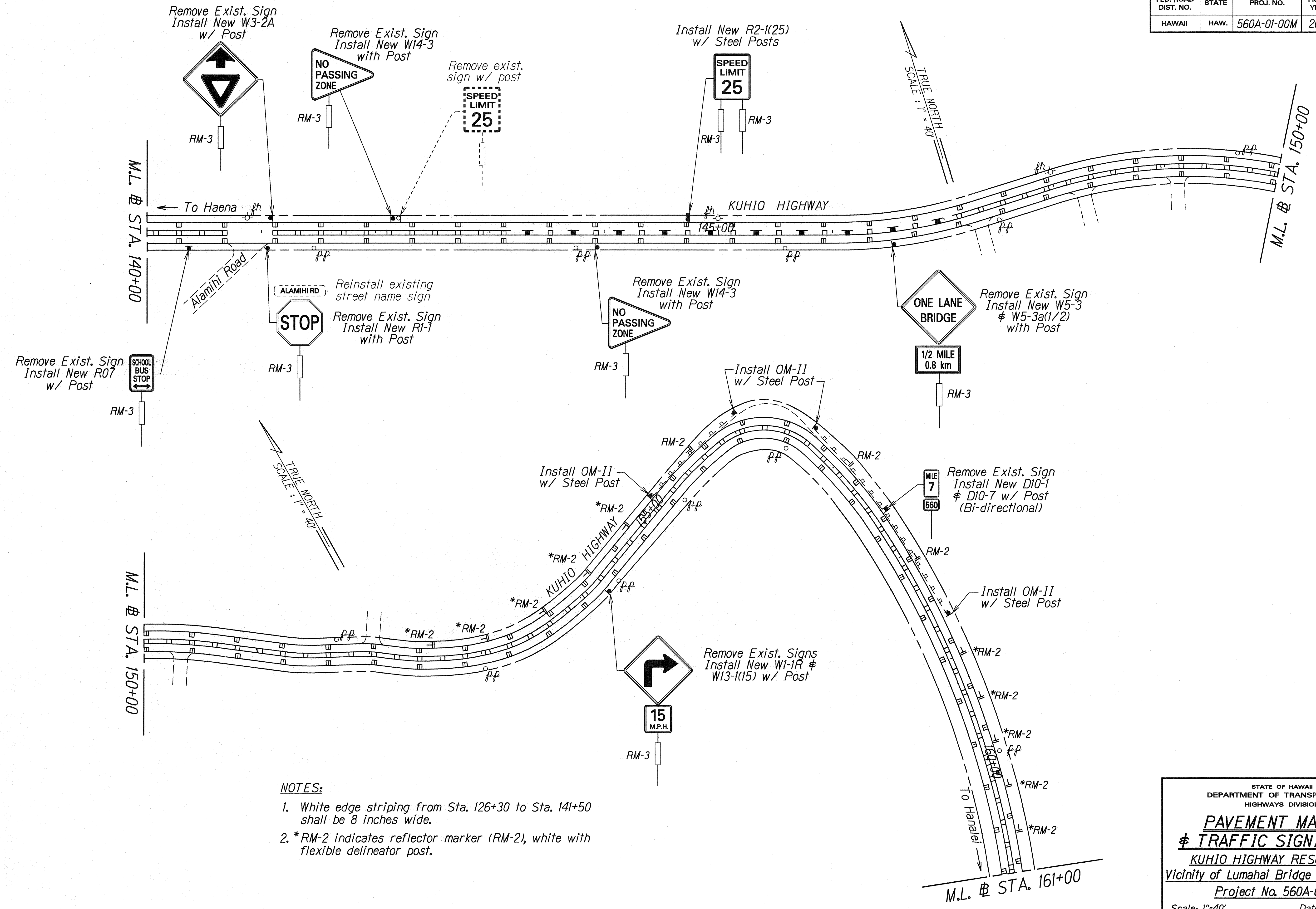


SURVEY PLOTTED BY: DATE: 2-1-99  
 DRAWN BY: R. A. ABB  
 DESIGNED BY: R. A. ABB  
 CHECKED BY: R. A. ABB  
 ORIGINAL PLAN: 2-1-99  
 NOTE: THIS PLAN IS FOR THE PROJECT ONLY AND IS NOT TO BE USED FOR ANY OTHER PURPOSE.  
 R. A. ABB

- NOTES:**
- White edge striping from Sta. 126+30 to Sta. 141+50 shall be 8 inches wide.
  - \*RM-3 indicates reflector marker (RM-3), yellow, with flexible delineator post.

STATE OF HAWAII  
 DEPARTMENT OF TRANSPORTATION  
 HIGHWAYS DIVISION  
**PAVEMENT MARKING**  
**& TRAFFIC SIGNING PLAN**  
 KUHIO HIGHWAY RESURFACING  
 Vicinity of Lumahai Bridge to Alealea Road  
 Project No. 560A-01-00M  
 Scale: 1"=40' Date: December, 1999  
 SHEET No. 2 OF 5 SHEETS

FED. ROAD DIST. NO.	STATE	PROJ. NO.	FISCAL YEAR	SHEET NO.	TOTAL SHEETS
HAWAII	HAW.	560A-01-00M	2000	22	27



- NOTES:**
1. White edge striping from Sta. 126+30 to Sta. 141+50 shall be 8 inches wide.
  2. \*RM-2 indicates reflector marker (RM-2), white with flexible delineator post.

DESIGNED BY	DATE
DRAWN BY	2-1-99
CHECKED BY	
APPROVED BY	
PROJECT NO.	
DATE	
SCALE	
BY	
DATE	
BY	
DATE	
BY	
DATE	

STATE OF HAWAII  
DEPARTMENT OF TRANSPORTATION  
HIGHWAYS DIVISION

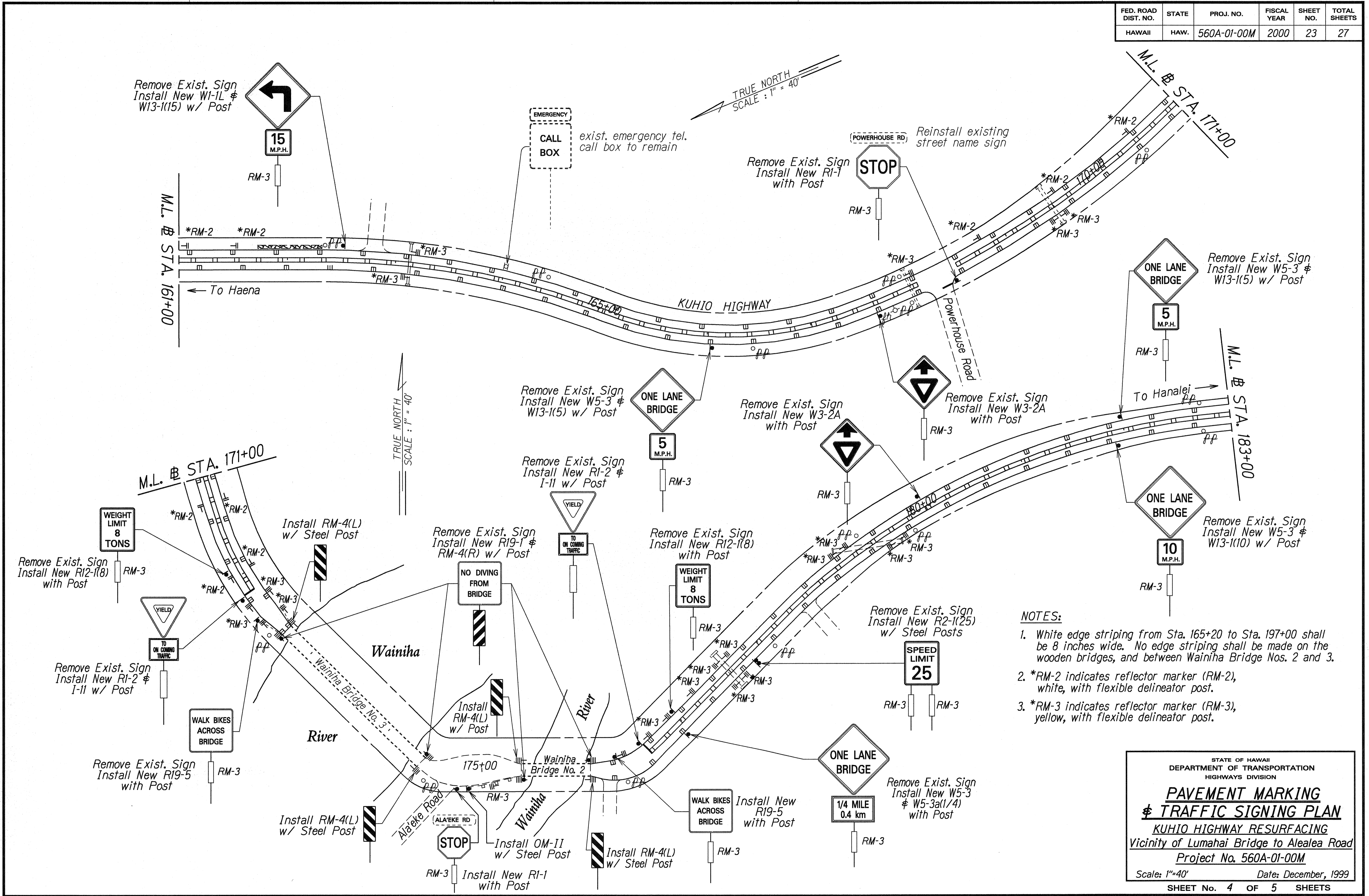
**PAVEMENT MARKING**  
**TRAFFIC SIGNING PLAN**

KUHIO HIGHWAY RESURFACING  
Vicinity of Lumahai Bridge to Alealea Road  
Project No. 560A-01-00M

Scale: 1"=40' Date: December, 1999

SHEET No. 3 OF 5 SHEETS

FED. ROAD DIST. NO.	STATE	PROJ. NO.	FISCAL YEAR	SHEET NO.	TOTAL SHEETS
HAWAII	HAW.	560A-01-00M	2000	23	27



- NOTES:**
1. White edge striping from Sta. 165+20 to Sta. 197+00 shall be 8 inches wide. No edge striping shall be made on the wooden bridges, and between Wainiha Bridge Nos. 2 and 3.
  2. \*RM-2 indicates reflector marker (RM-2), white, with flexible delineator post.
  3. \*RM-3 indicates reflector marker (RM-3), yellow, with flexible delineator post.

DATE: 2/1/99  
 SURVEY PLANNED BY: [ ]  
 DRAWN BY: B. ACOB  
 CHECKED BY: [ ]  
 ORIGINAL PLAN: [ ]  
 NOTE: [ ]  
 SCALE: [ ]  
 PROJECT: [ ]

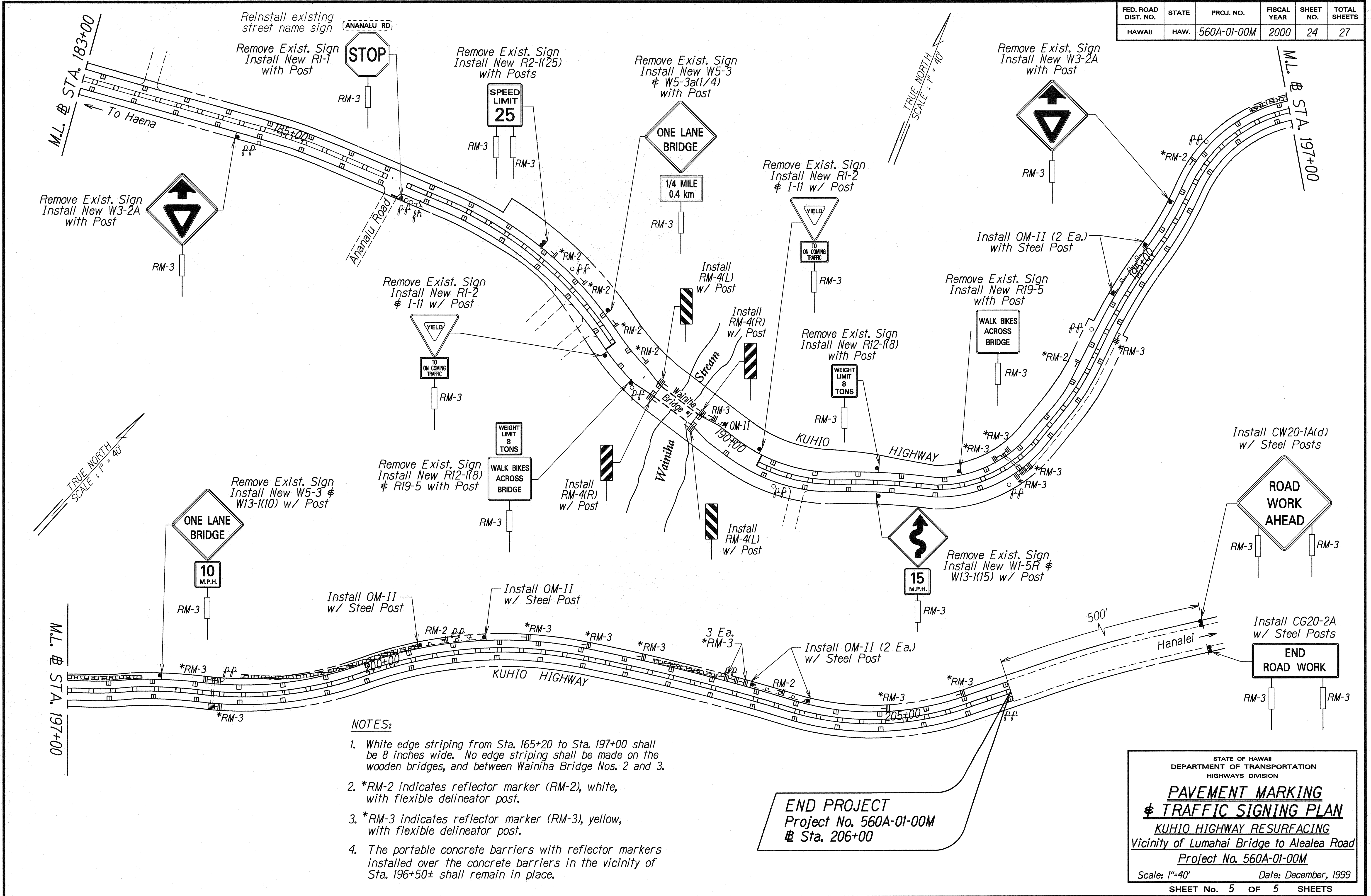
STATE OF HAWAII  
 DEPARTMENT OF TRANSPORTATION  
 HIGHWAYS DIVISION

**PAVEMENT MARKING  
 & TRAFFIC SIGNING PLAN**

**KUHIO HIGHWAY RESURFACING**  
 Vicinity of Lumahai Bridge to Alealea Road  
 Project No. 560A-01-00M

Scale: 1"=40' Date: December, 1999  
 SHEET No. 4 OF 5 SHEETS

FED. ROAD DIST. NO.	STATE	PROJ. NO.	FISCAL YEAR	SHEET NO.	TOTAL SHEETS
HAWAII	HAW.	560A-01-00M	2000	24	27



- NOTES:**
1. White edge striping from Sta. 165+20 to Sta. 197+00 shall be 8 inches wide. No edge striping shall be made on the wooden bridges, and between Wainiha Bridge Nos. 2 and 3.
  2. \*RM-2 indicates reflector marker (RM-2), white, with flexible delineator post.
  3. \*RM-3 indicates reflector marker (RM-3), yellow, with flexible delineator post.
  4. The portable concrete barriers with reflector markers installed over the concrete barriers in the vicinity of Sta. 196+50± shall remain in place.

DATE: 2-11-99  
 SURVEY PLOTTED BY: J. A. ABBOTT  
 DRAWN BY: J. A. ABBOTT  
 DESIGNED BY: J. A. ABBOTT  
 CHECKED BY: J. A. ABBOTT  
 ORIGINAL PLAN: 2-11-99  
 NOTE: THIS PLAN IS A REVISION OF THE ORIGINAL PLAN.  
 DRAWN BY: J. A. ABBOTT  
 CHECKED BY: J. A. ABBOTT

STATE OF HAWAII  
 DEPARTMENT OF TRANSPORTATION  
 HIGHWAYS DIVISION

**PAVEMENT MARKING  
 & TRAFFIC SIGNING PLAN**

KUHIO HIGHWAY RESURFACING  
 Vicinity of Lumahai Bridge to Alealea Road  
 Project No. 560A-01-00M

Scale: 1"=40' Date: December, 1999

SHEET No. 5 OF 5 SHEETS