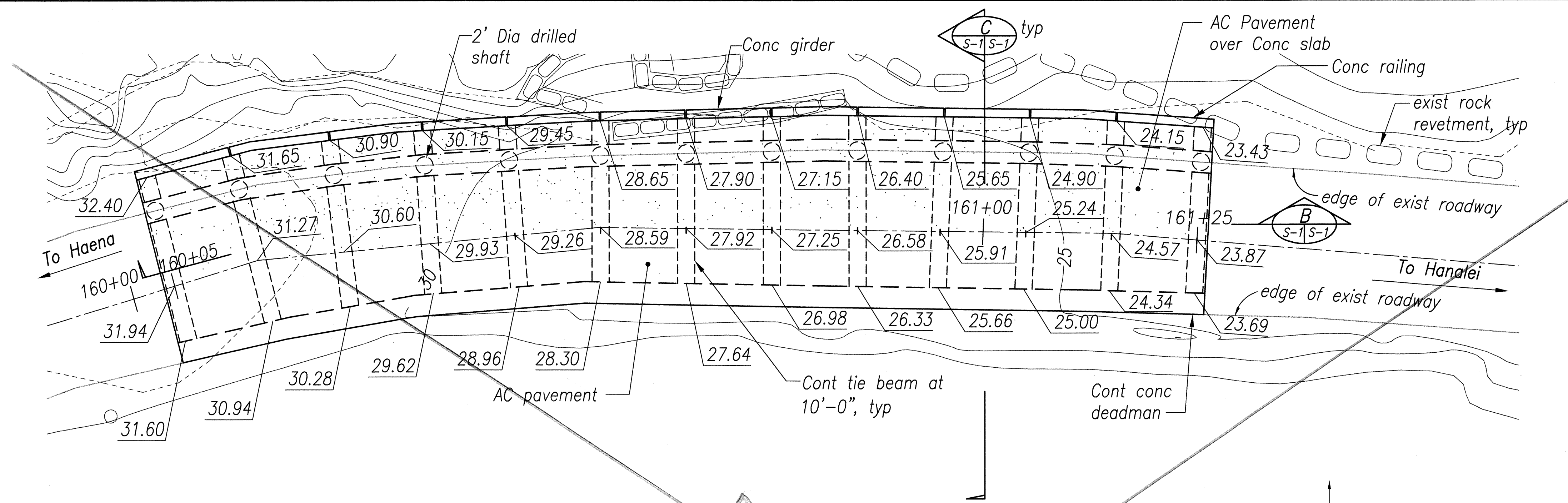
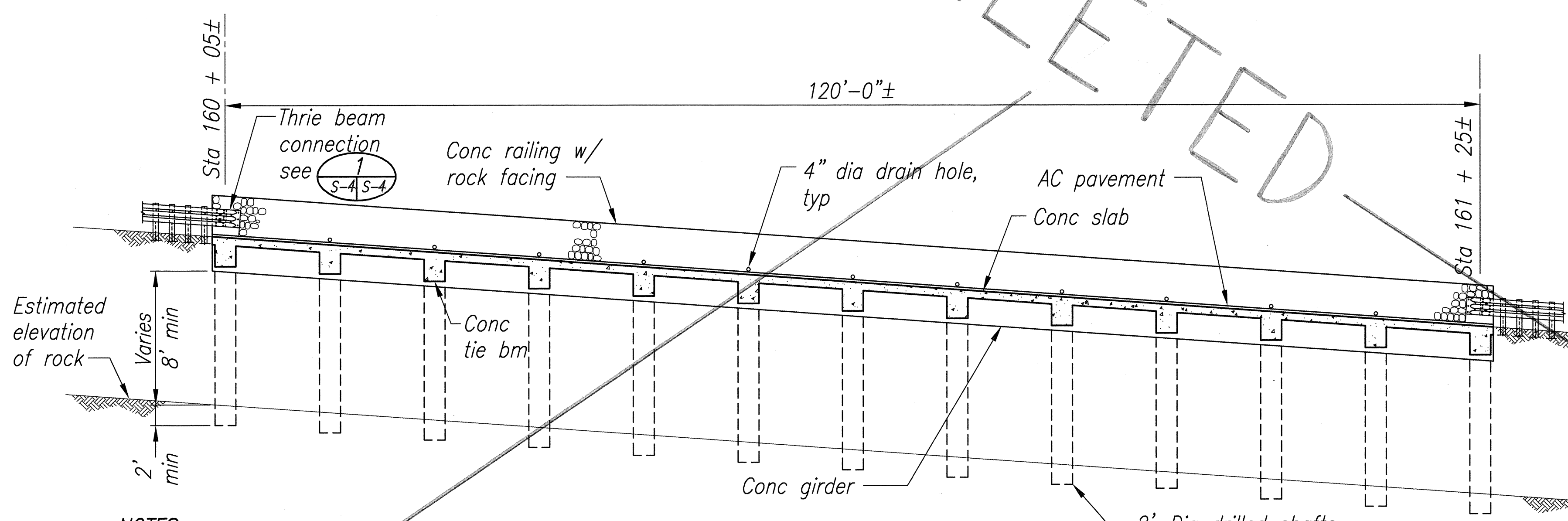


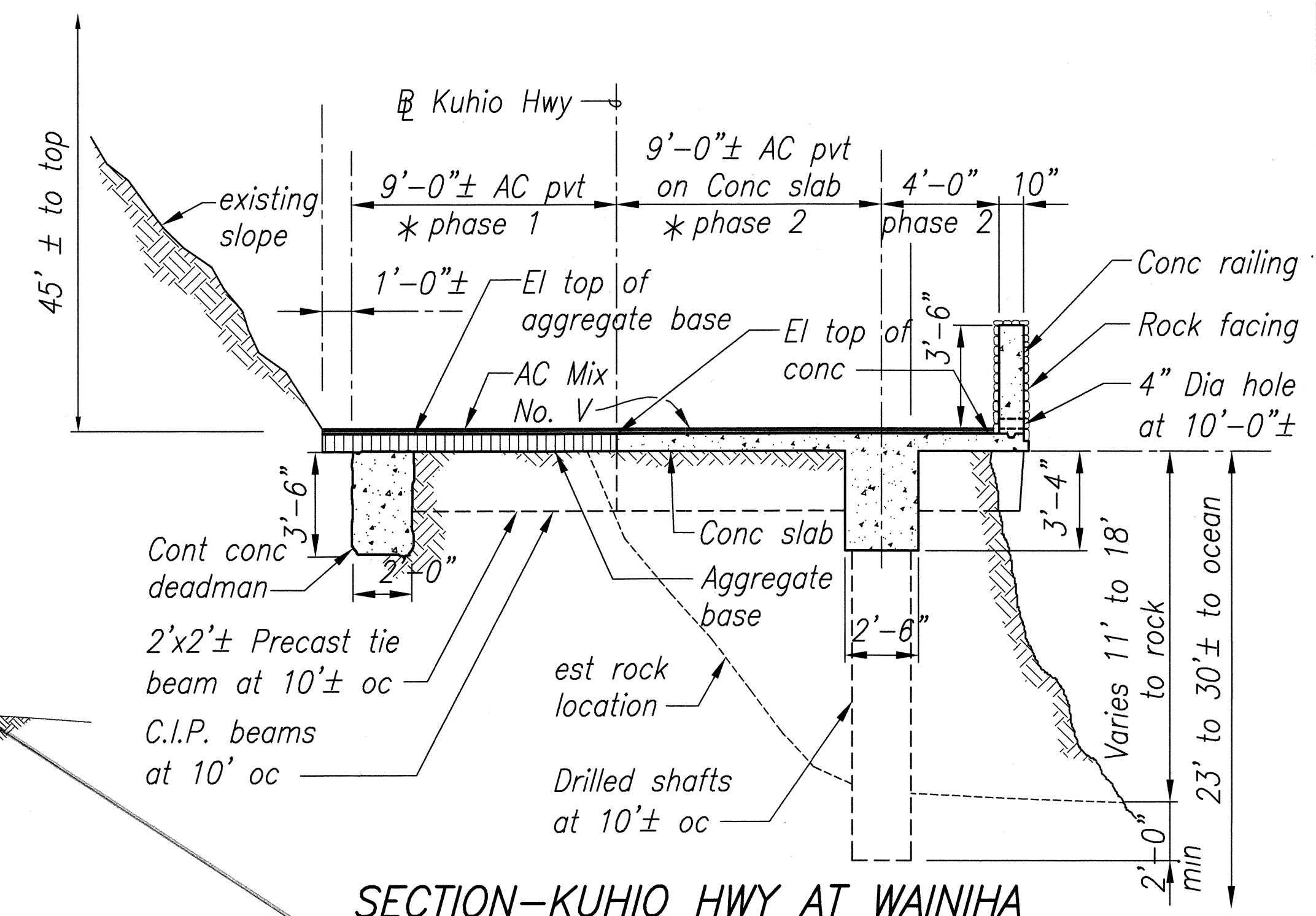
FED. ROAD DIST. NO.	STATE	PROJ. NO.	FISCAL YEAR	SHEET NO.	TOTAL SHEETS
HAWAII	HAW	560A-03-99	2002	12	86



A PLAN OF SHOULDER STRENGTHENING
 Scale: 1/8"=1'-0"



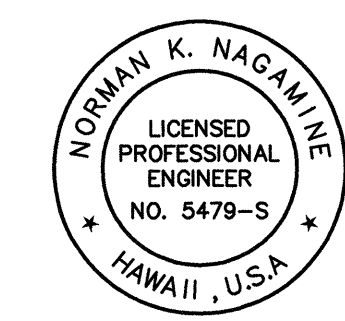
B LONGITUDINAL SECTION
 Scale: 1/8"=1'-0"



C SECTION-KUHIO HWY AT WAINIHA HEADING TOWARD HAENA
 Scale: 1/4"=1'-0"

- NOTES:**
- For bid purpose assume length of drilled shafts to be 15 ft each from bottom of concrete girder to bottom elevation of shaft.
 - Phase 1 portion of the work, including concrete deadman and precast beam, shall be completed prior to start of Phase 2 (AC pavement and aggregate base work may be accomplished in Phase 2, provided condition under note 3 is satisfied).
 - Contractor shall keep one lane open during construction hours, and both lanes open during non-construction hours. All concrete work shall be protected from vehicular load for minimum 7 days from the time of pour or until concrete strength reaches 3,000 psi whichever comes first. Contractor shall place protective steel plate or provide other means so that vehicular load will not come in contact with the newly poured concrete.

SURVEY PLOTTED BY	DATE
DRAWN BY	JAN 2001
DESIGNED BY	
NOTED BY	
CHECKED BY	
ORIGINAL PLAN	
NOTE BOOK	
QUANTITIES BY	
CHECKED BY	



Norman K. Nagamine
 THIS WORK WAS PREPARED BY ME OR UNDER MY SUPERVISION

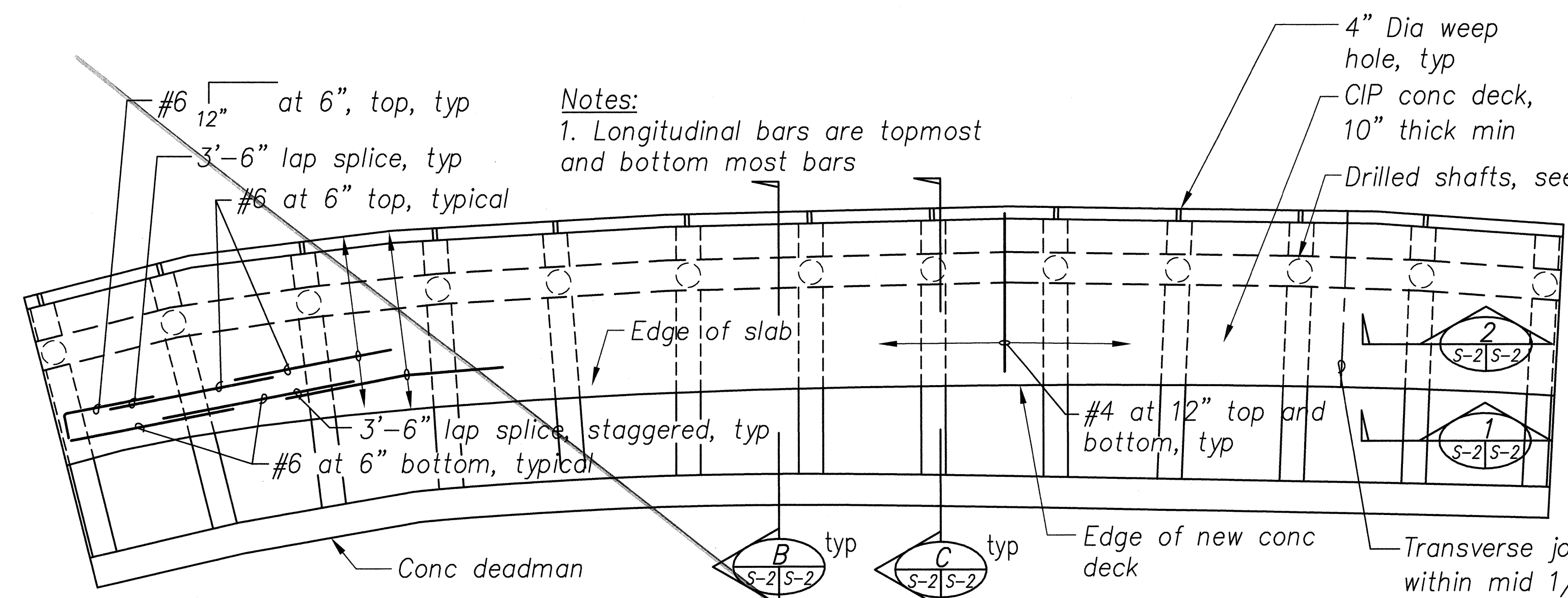
S-1

STATE OF HAWAII
 DEPARTMENT OF TRANSPORTATION
 HIGHWAYS DIVISION
SHOULDER STRENGTHENING SECTION
 KUHIO HIGHWAY
 SHOULDER IMPROVEMENTS
 Haena to Princeville
 Project No. 560A-03-99
 Scale: Noted Date: February, 2002
 SHEET No. S-1 OF 4 SHEETS

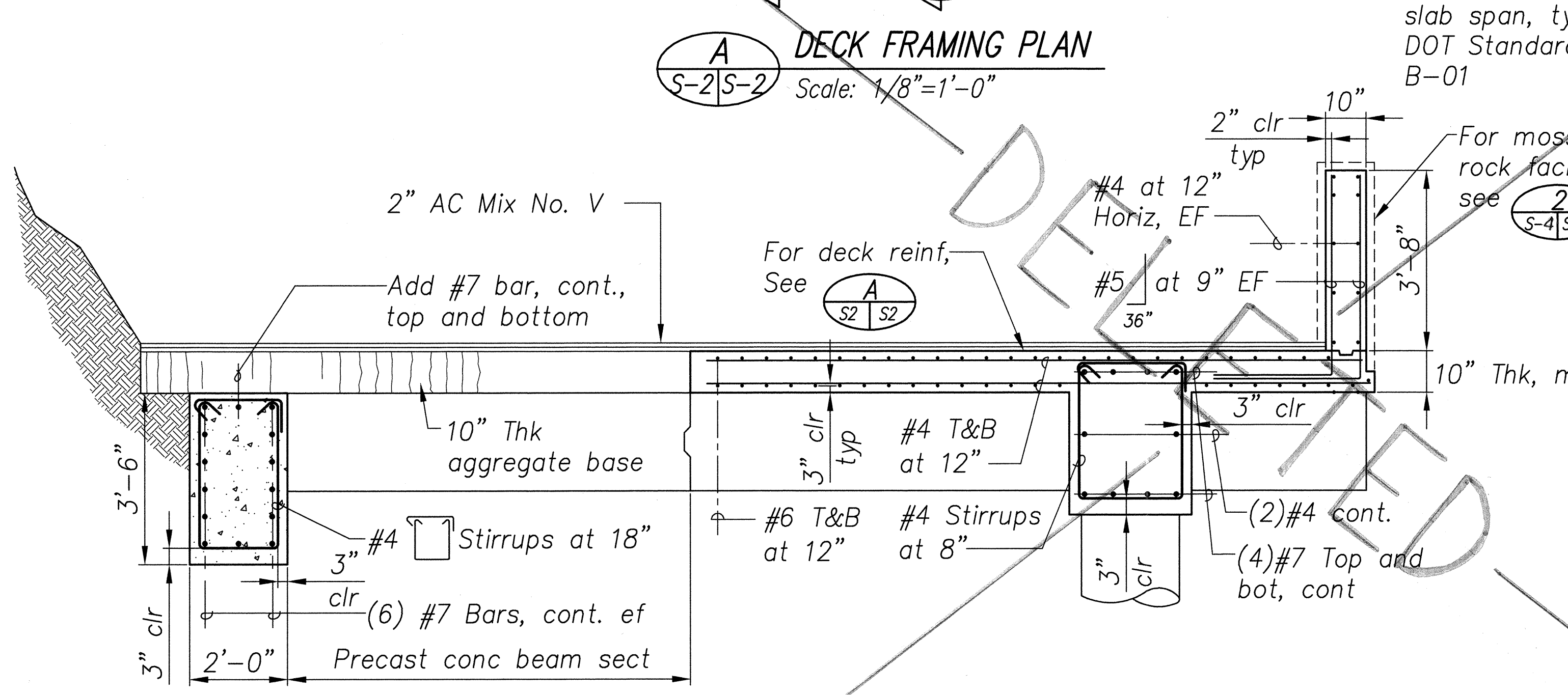
"AS-BUILT"

w:\Dwg\Kuhio_S01.dwg Thu Feb 21 13:51:32 2002

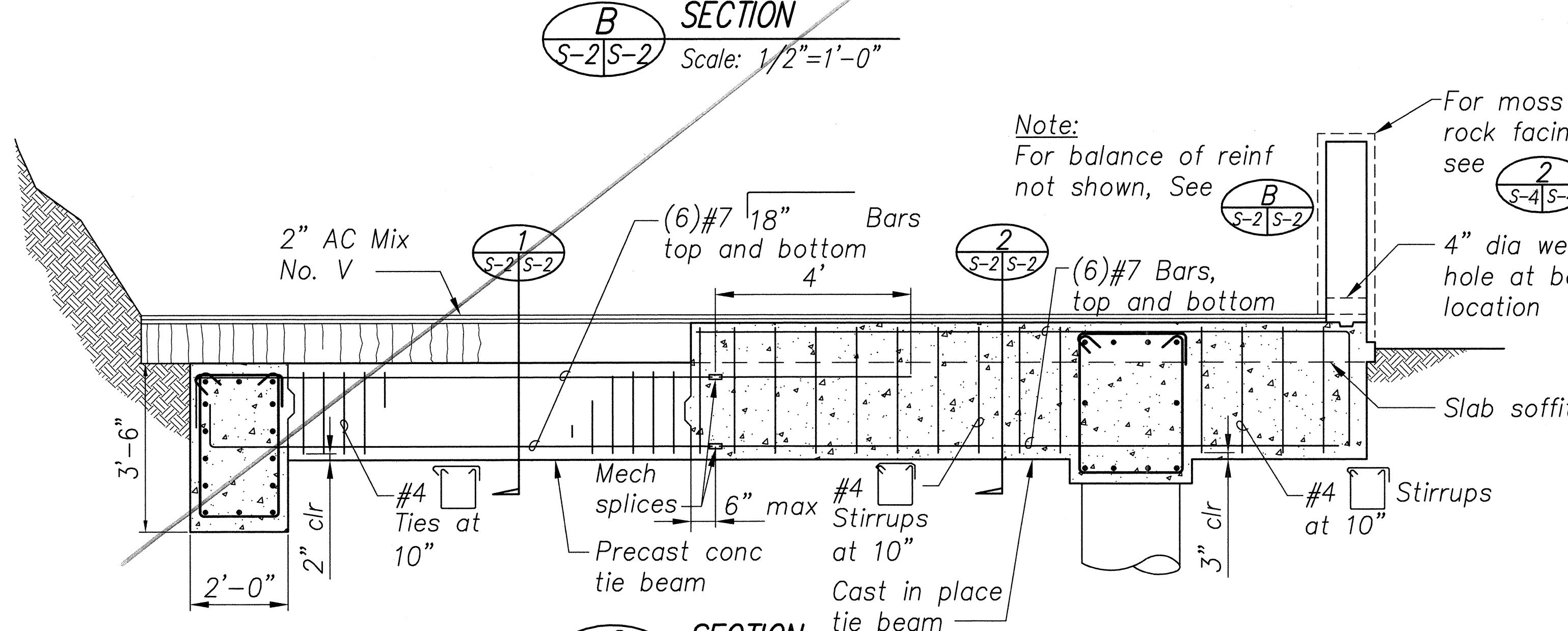
FED. ROAD DIST. NO.	STATE	PROJ. NO.	FISCAL YEAR	SHEET NO.	TOTAL SHEETS
HAWAII	HAW	560A-03-99	2002	13	86



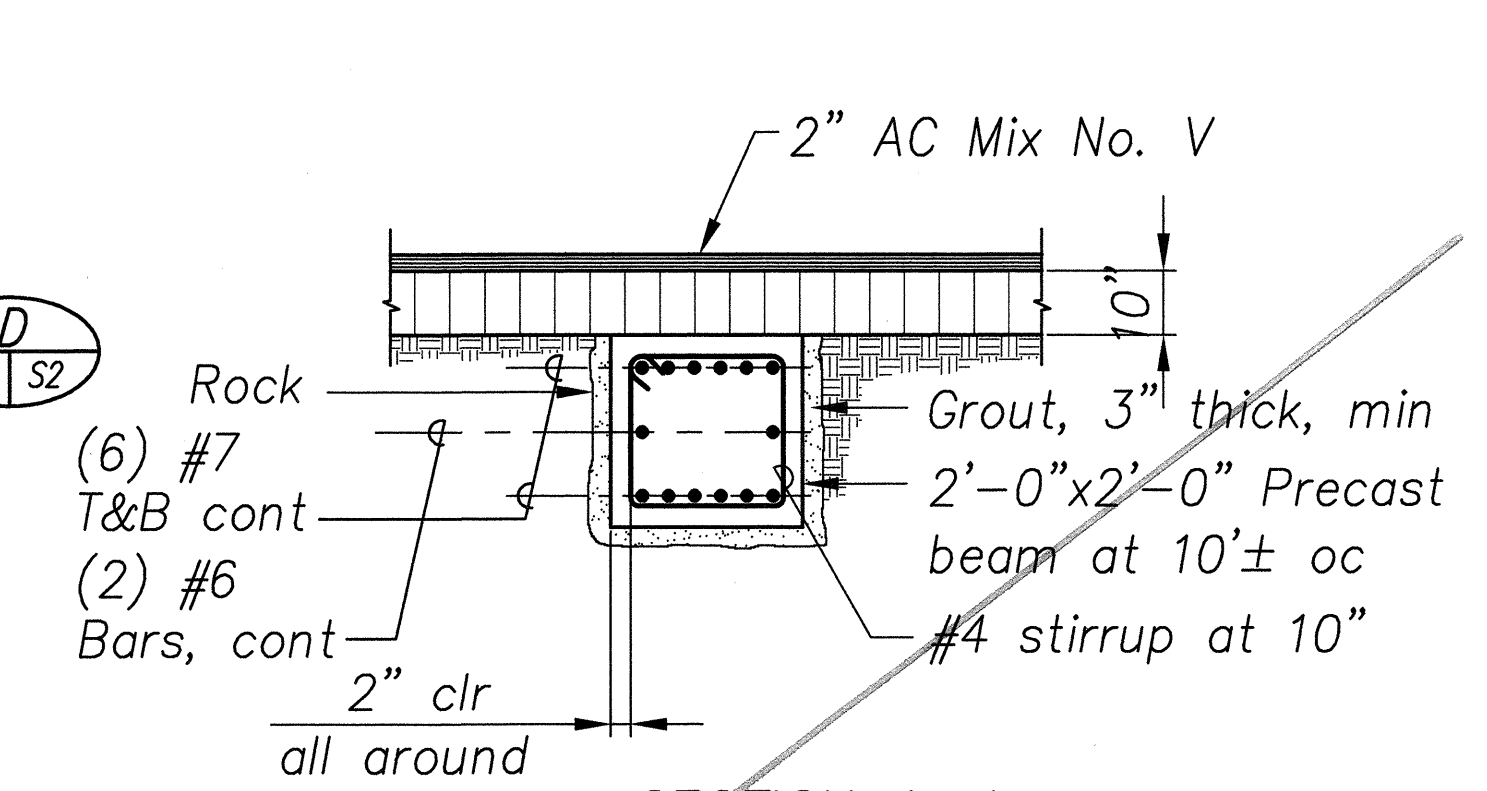
A DECK FRAMING PLAN
S-2|S-2 Scale: 1/8"=1'-0"



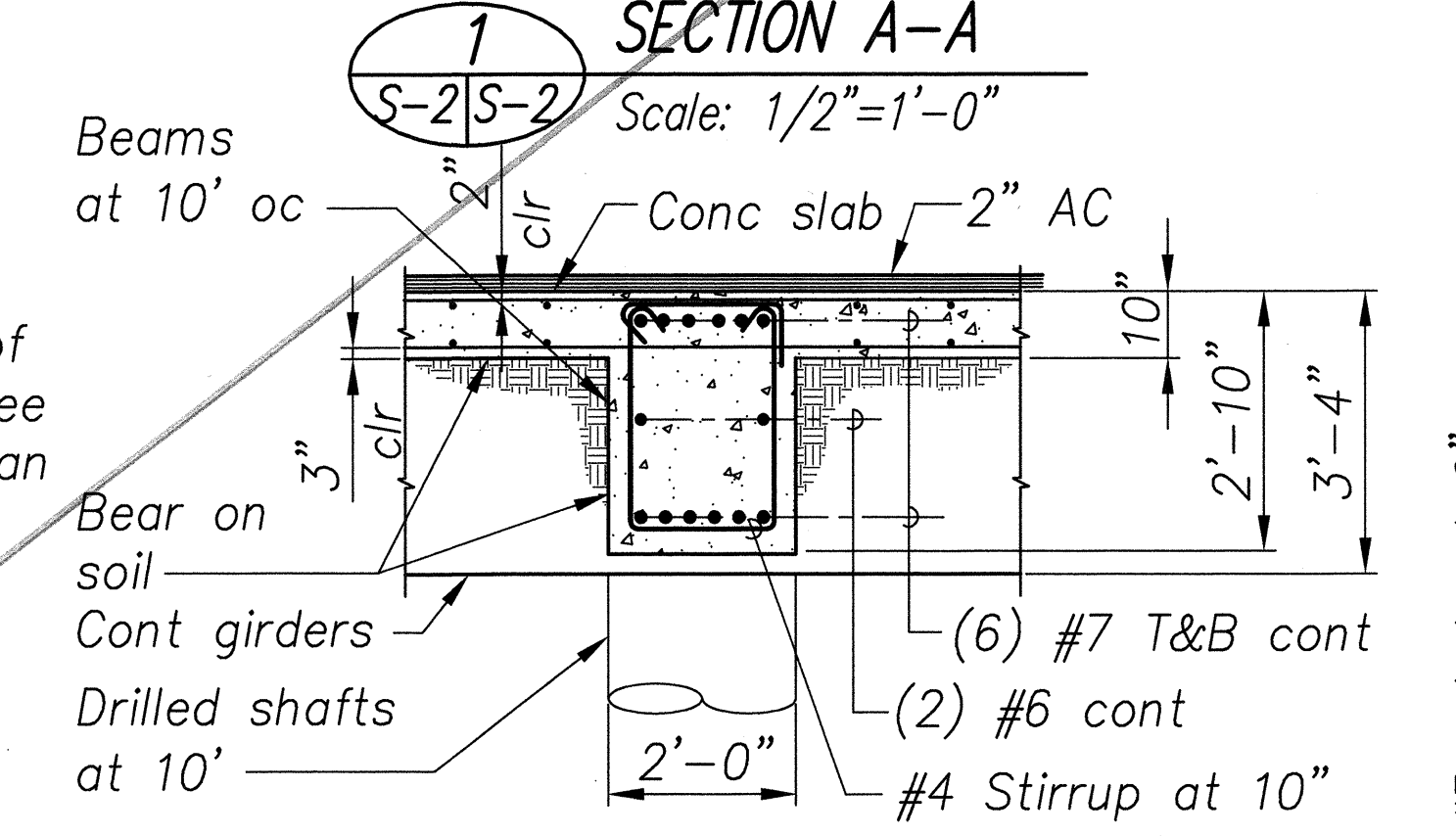
B SECTION
S-2|S-2 Scale: 1/2"=1'-0"



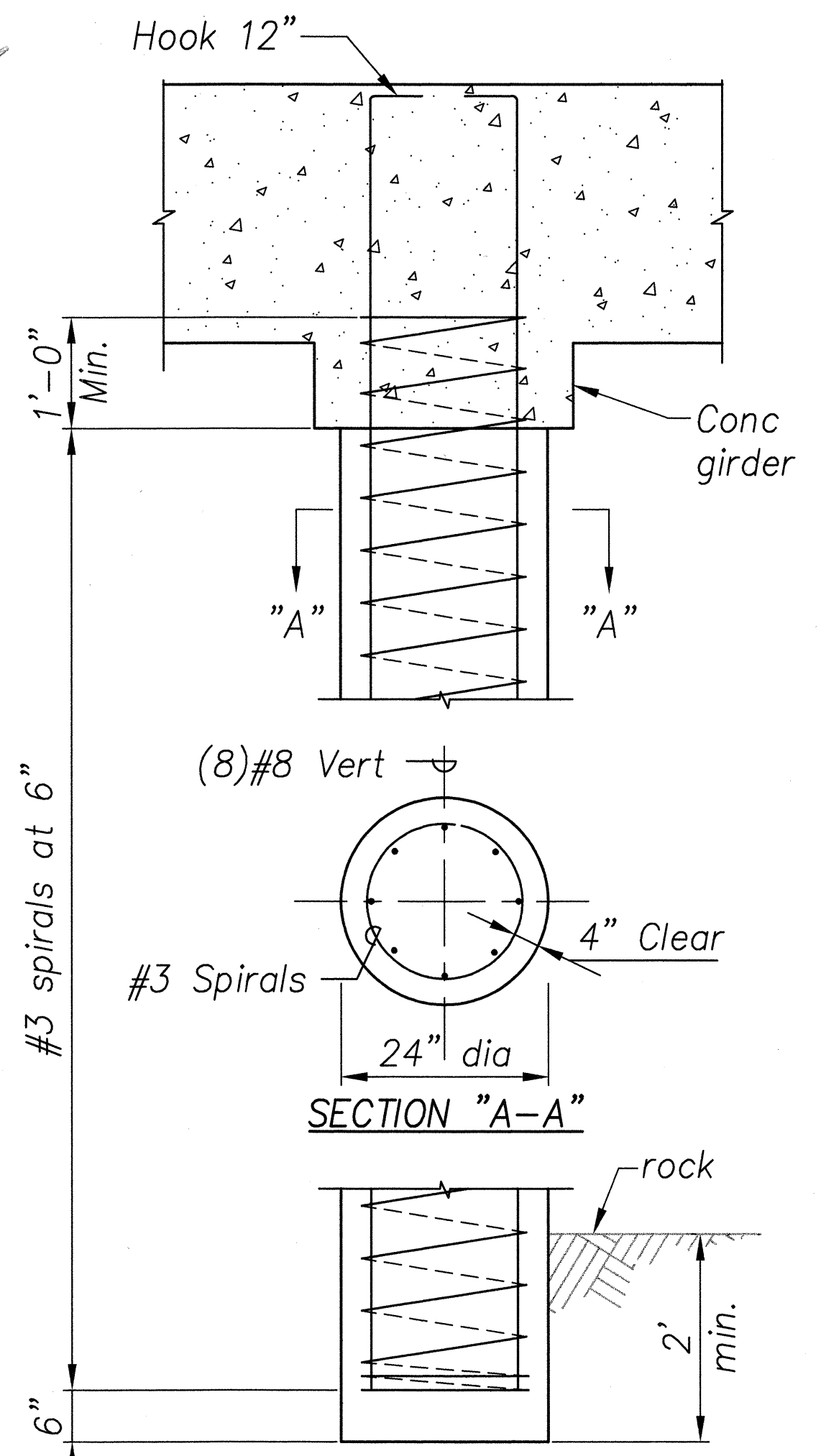
C SECTION
S-2|S-2 Scale: 1/2"=1'-0"



1 SECTION A-A
S-2|S-2 Scale: 1/2"=1'-0"



2 SECTION B-B
S-2|S-2 Scale: 1/2"=1'-0"



D TYPICAL DRILLED SHAFT ELEVATION
S-1|S-2 Scale: 3/4"=1'-0"

DATE	JAN 2001
SURVEY PLOTTED BY	
DESIGNED BY	
NOTE BOOK	
DESIGNED BY	
QUANTITIES BY	
CHECKED BY	
No.	



Norman K. Nagamine
THIS WORK WAS PREPARED
BY ME OR UNDER MY
SUPERVISION

STATE OF HAWAII
DEPARTMENT OF TRANSPORTATION
HIGHWAYS DIVISION
SHOULDER STRENGTHENING SECTION

KUHIO HIGHWAY
SHOULDER IMPROVEMENTS
Haena to Princeville
Project No. 560A-03-99
Scale: Noted Date: February, 2002
SHEET No. S-2 OF 4 SHEETS

S-2

"AS-BUILT"