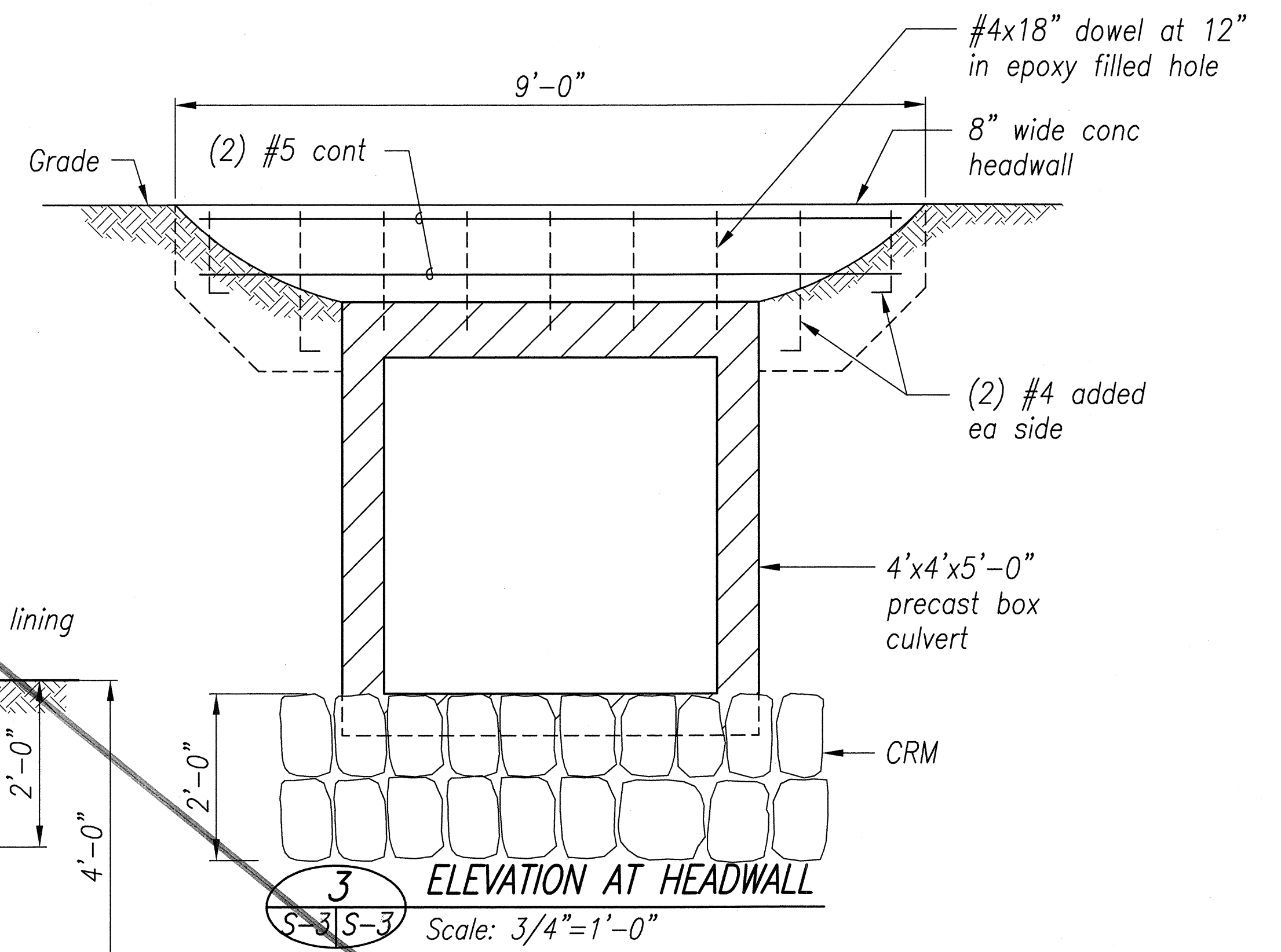
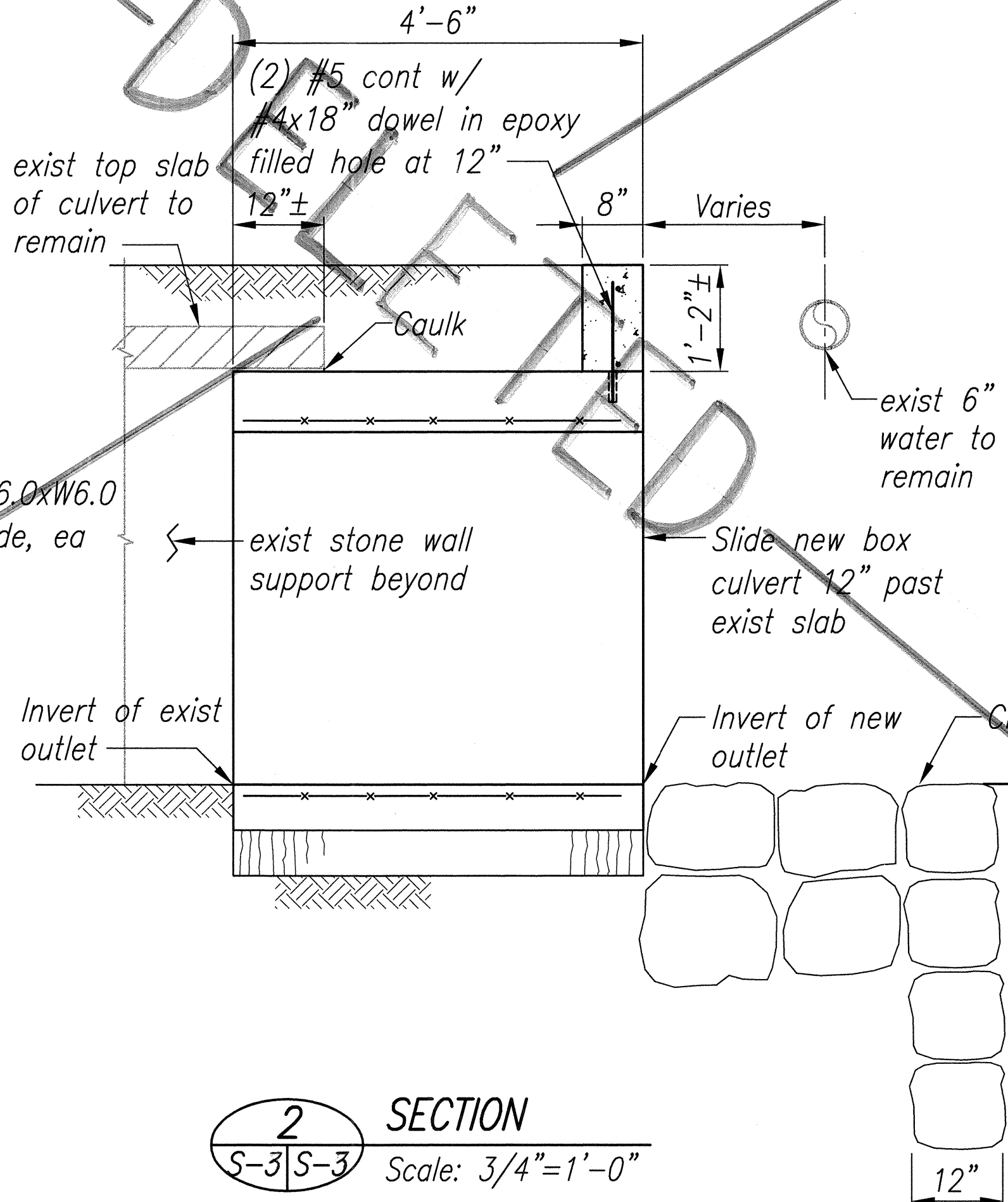
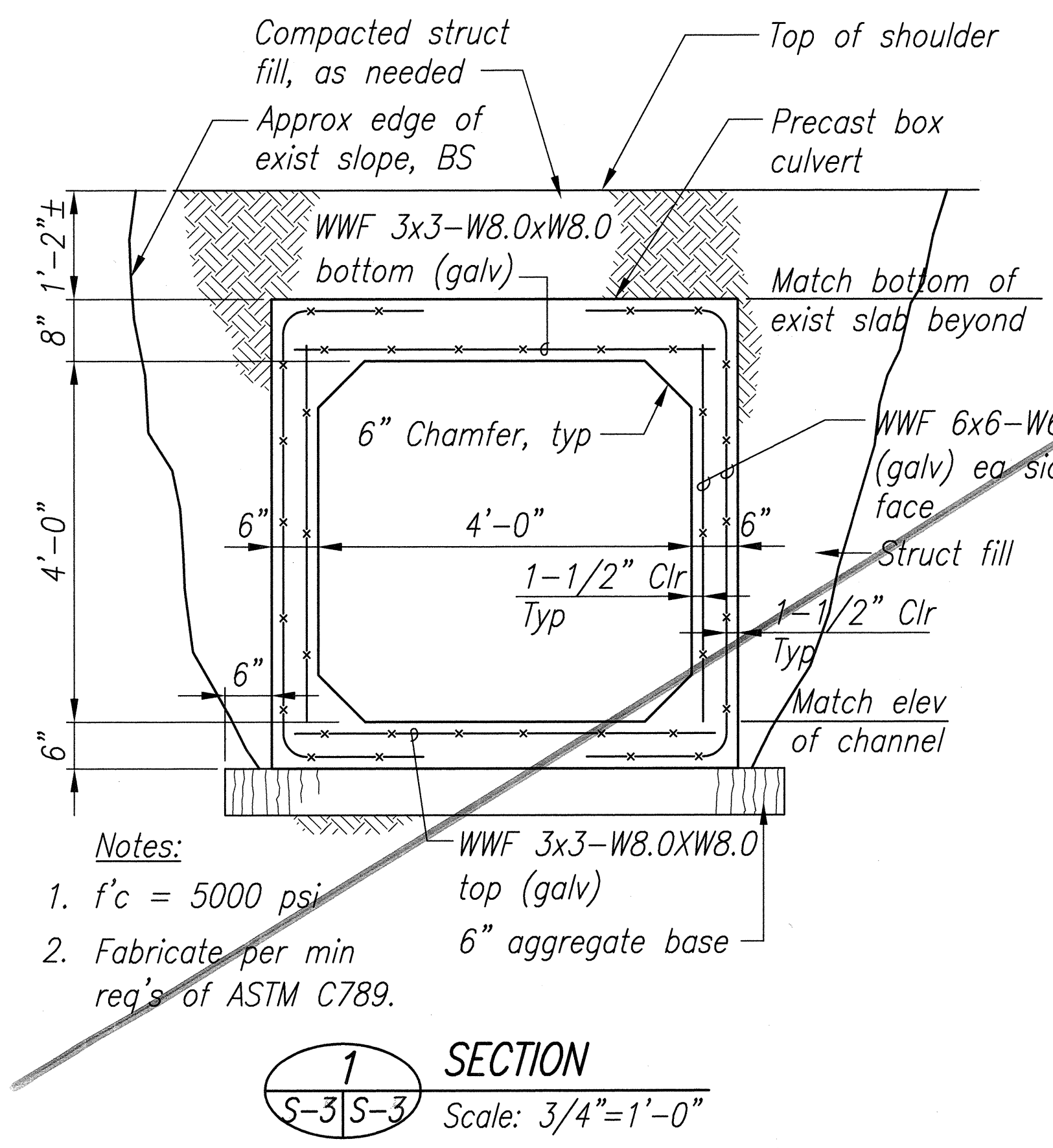
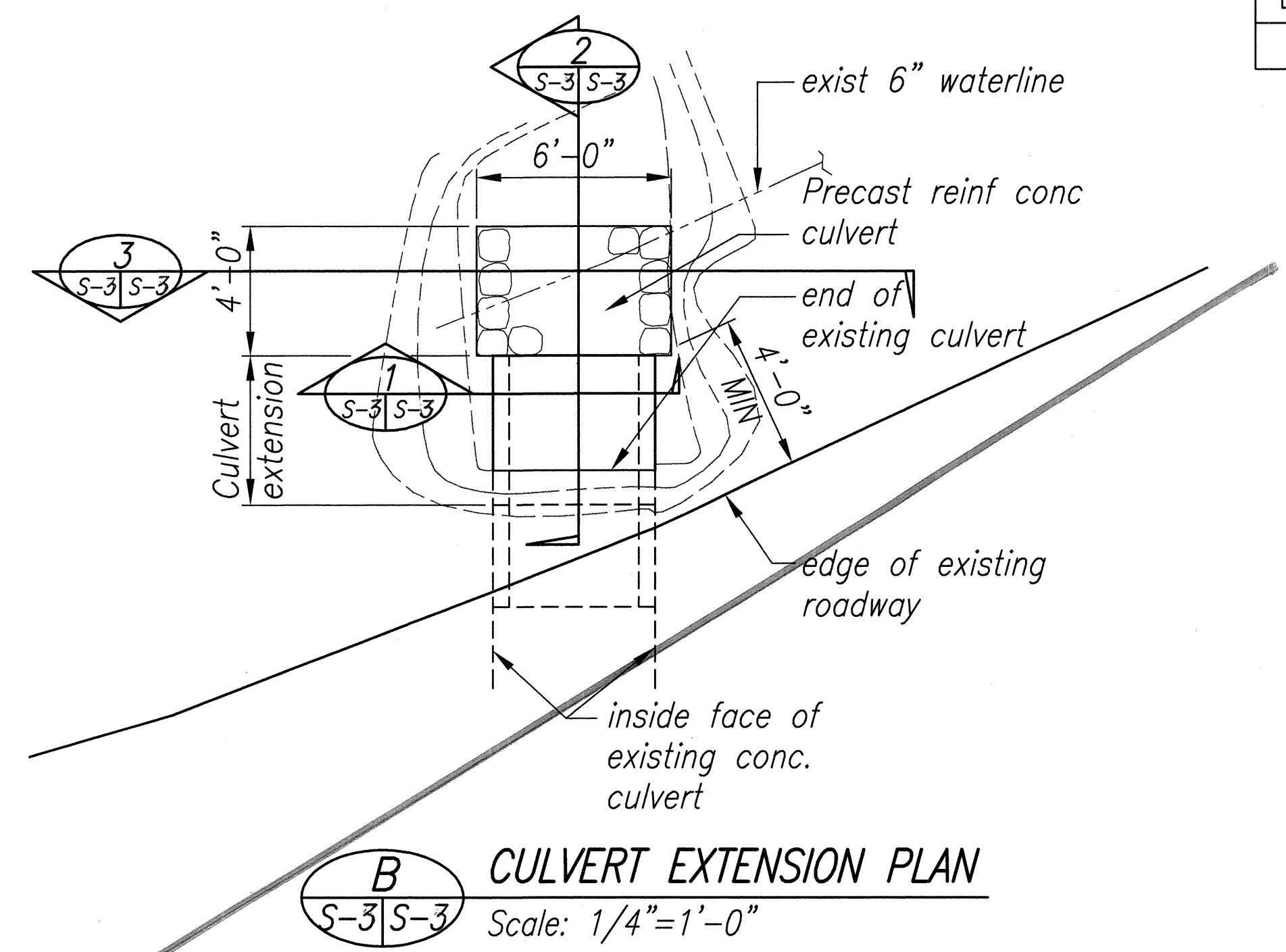
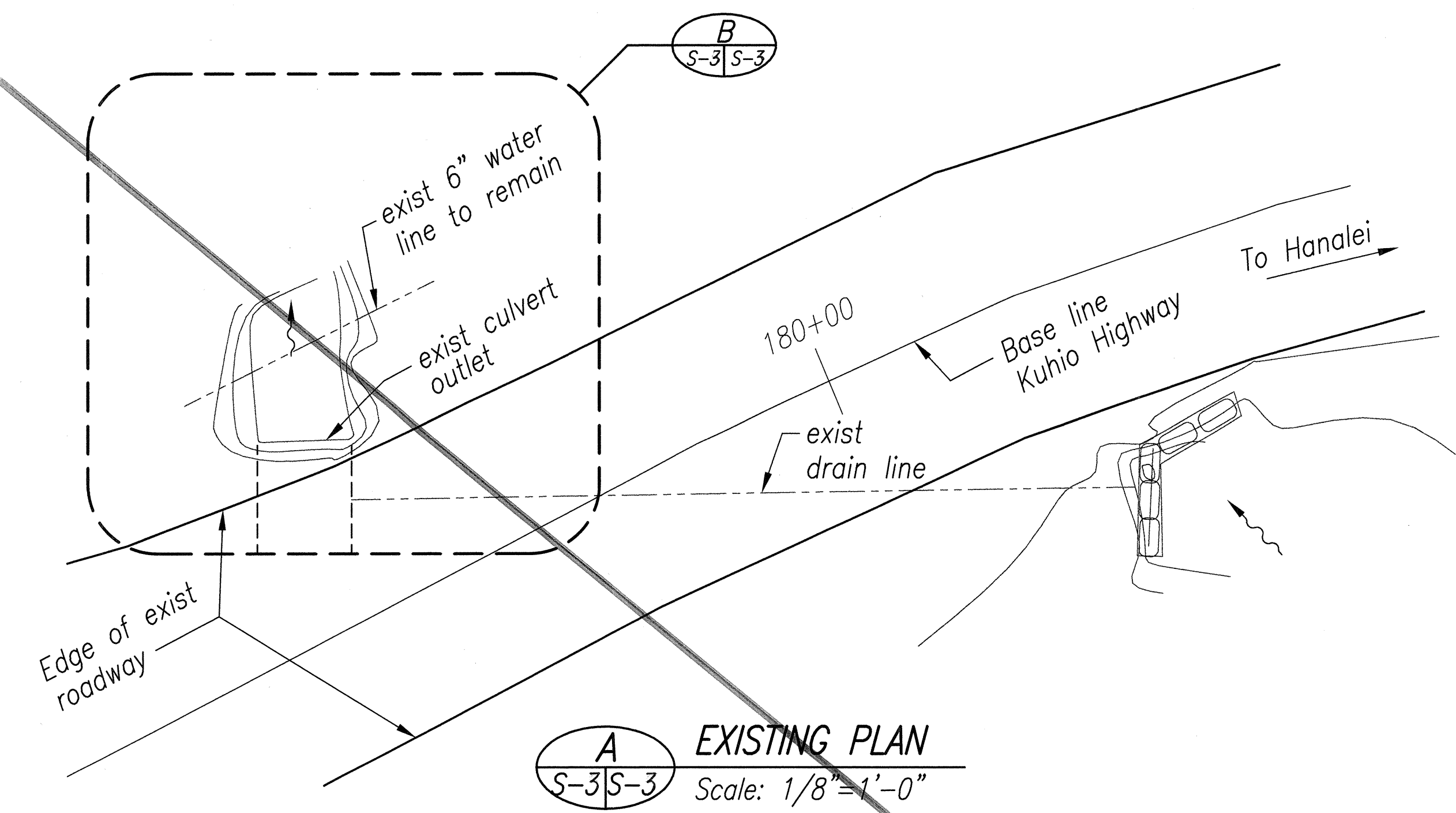


FED. ROAD DIST. NO.	STATE	PROJ. NO.	FISCAL YEAR	SHEET NO.	TOTAL SHEETS
HAWAII	HAW	560A-03-99	2002	14	86



- Notes:
1. $f'c = 5000 \text{ psi}$
 2. Fabricate per min req's of ASTM C789.

SURVEY PLOTTED BY	DATE
DESIGNED BY	NOE
DESIGNED BY	NOE
QUANTITIES BY	NOE
CHECKED BY	NOE



Norman K. Nagamine
THIS WORK WAS PREPARED
BY ME OR UNDER MY
SUPERVISION

S-3

STATE OF HAWAII
DEPARTMENT OF TRANSPORTATION
HIGHWAYS DIVISION
CULVERT EXTENSION-STA 179+65
KUHIO HIGHWAY
SHOULDER IMPROVEMENTS
Haena to Princeville
Project No. 560A-03-99
Scale: Noted Date: February, 2002
SHEET No. S-3 OF 4 SHEETS