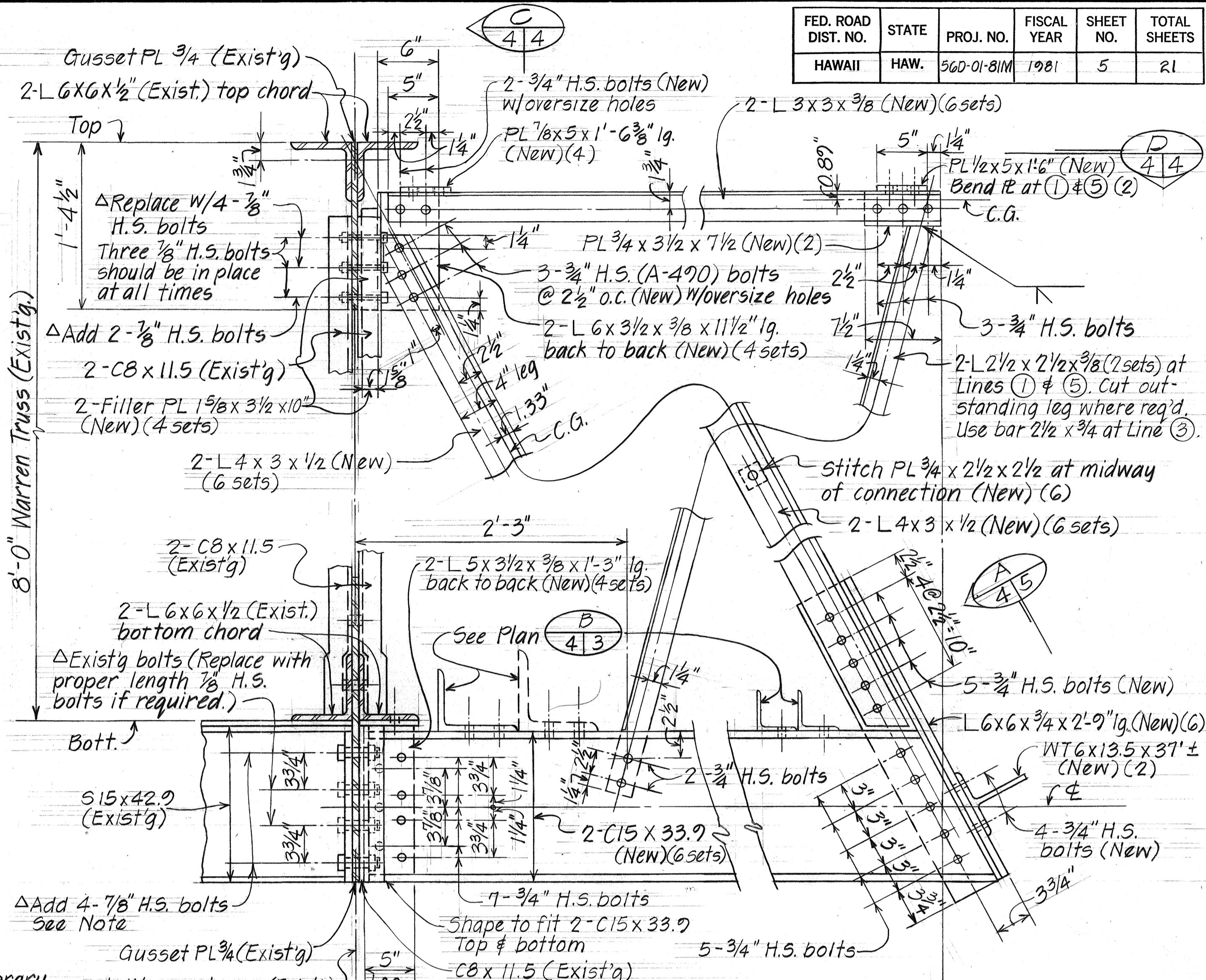
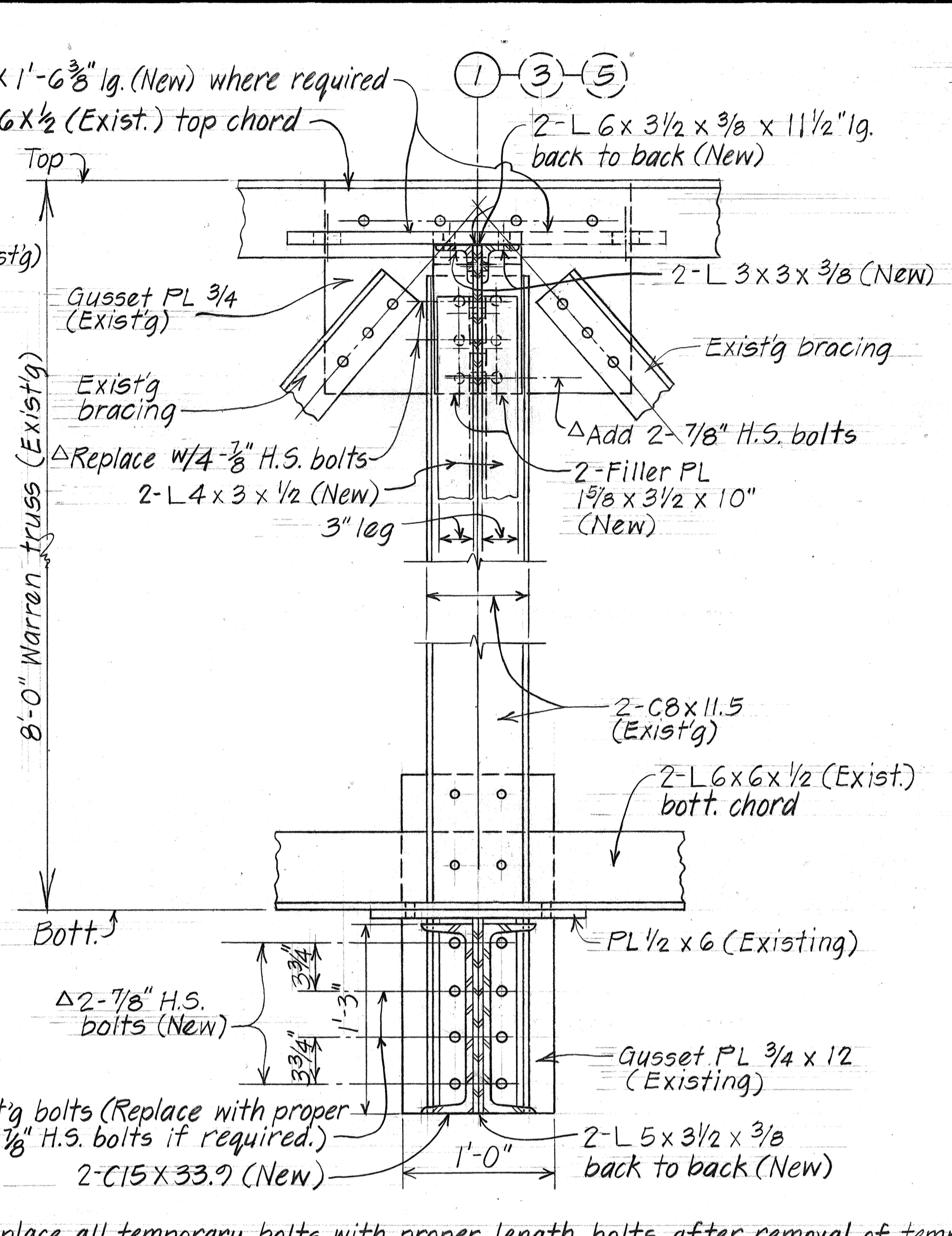
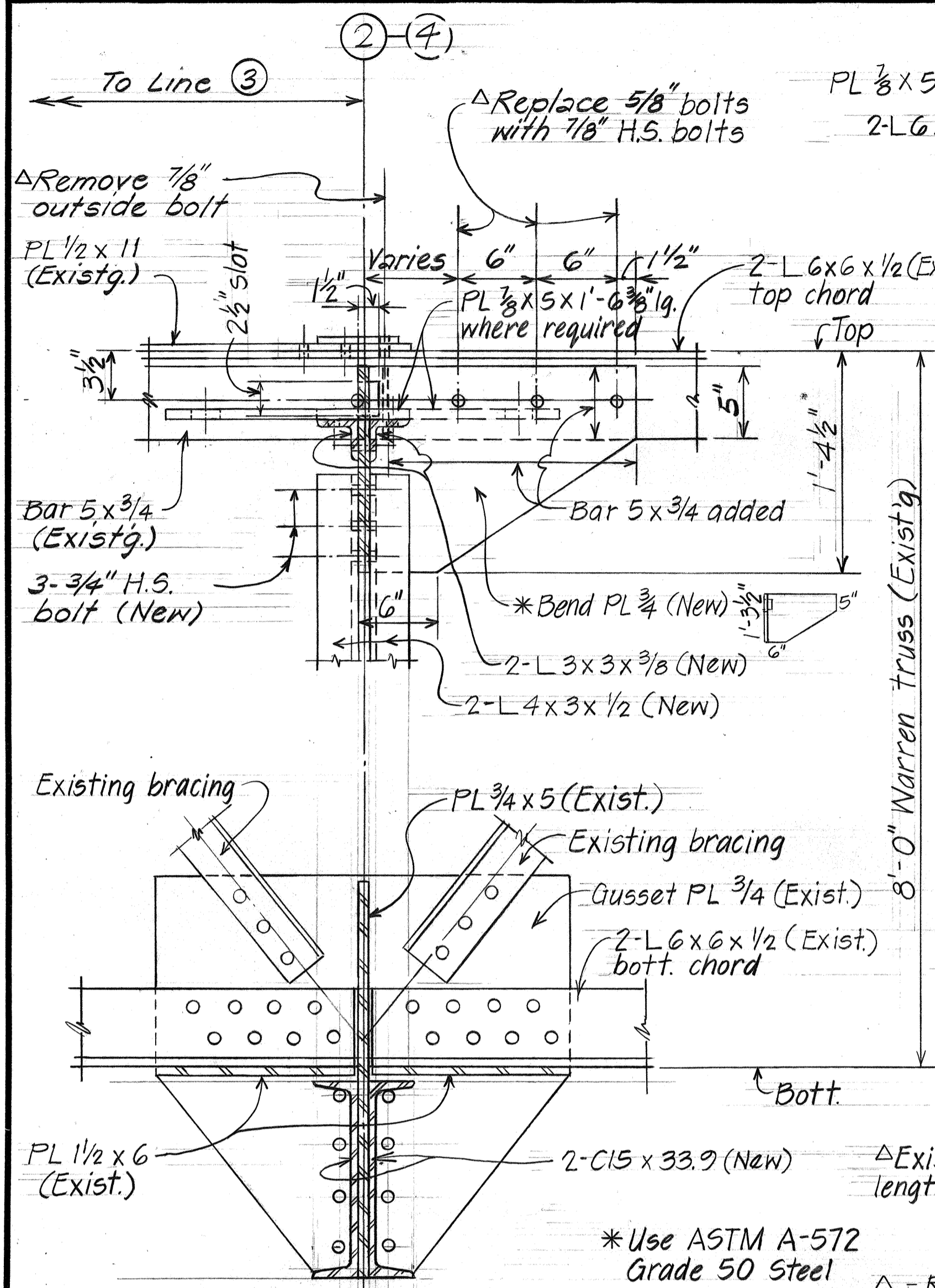


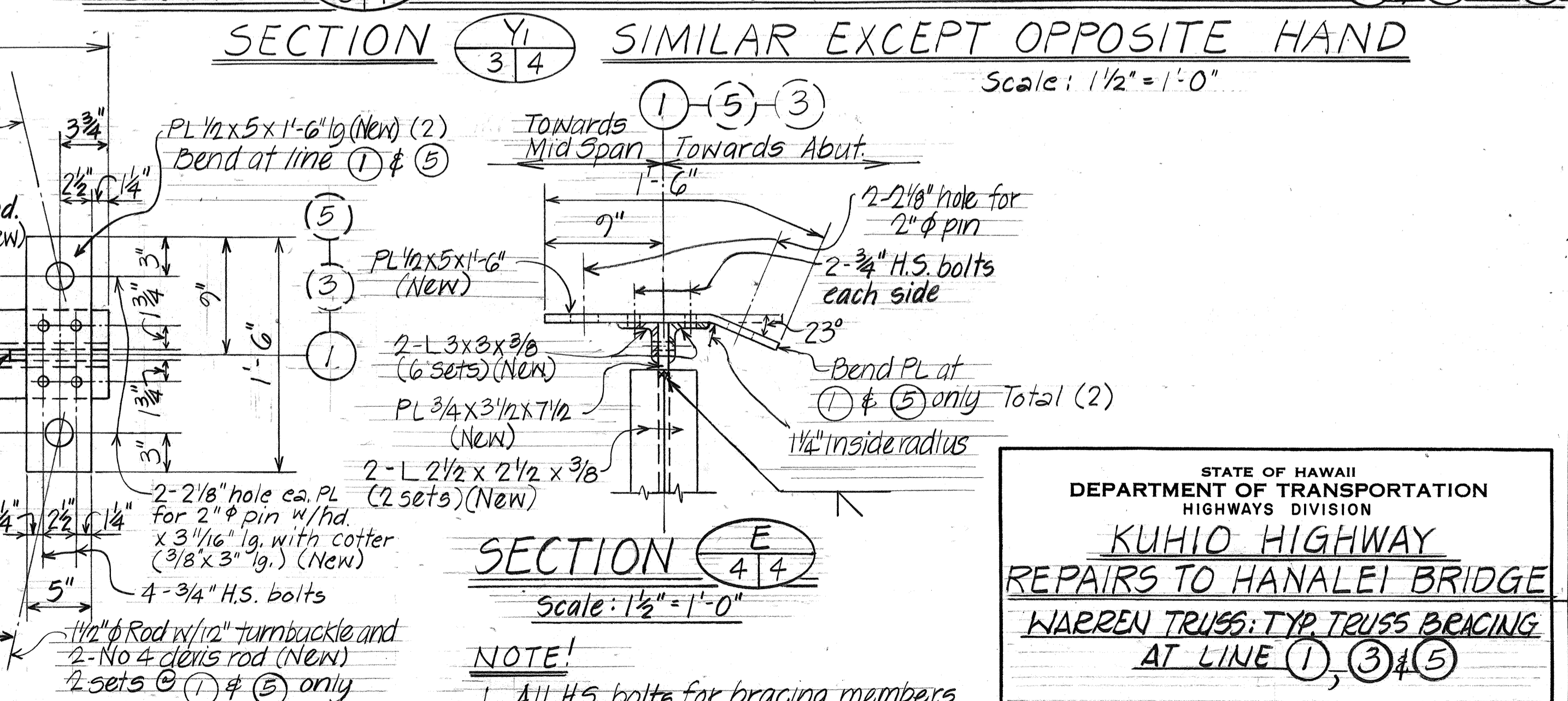
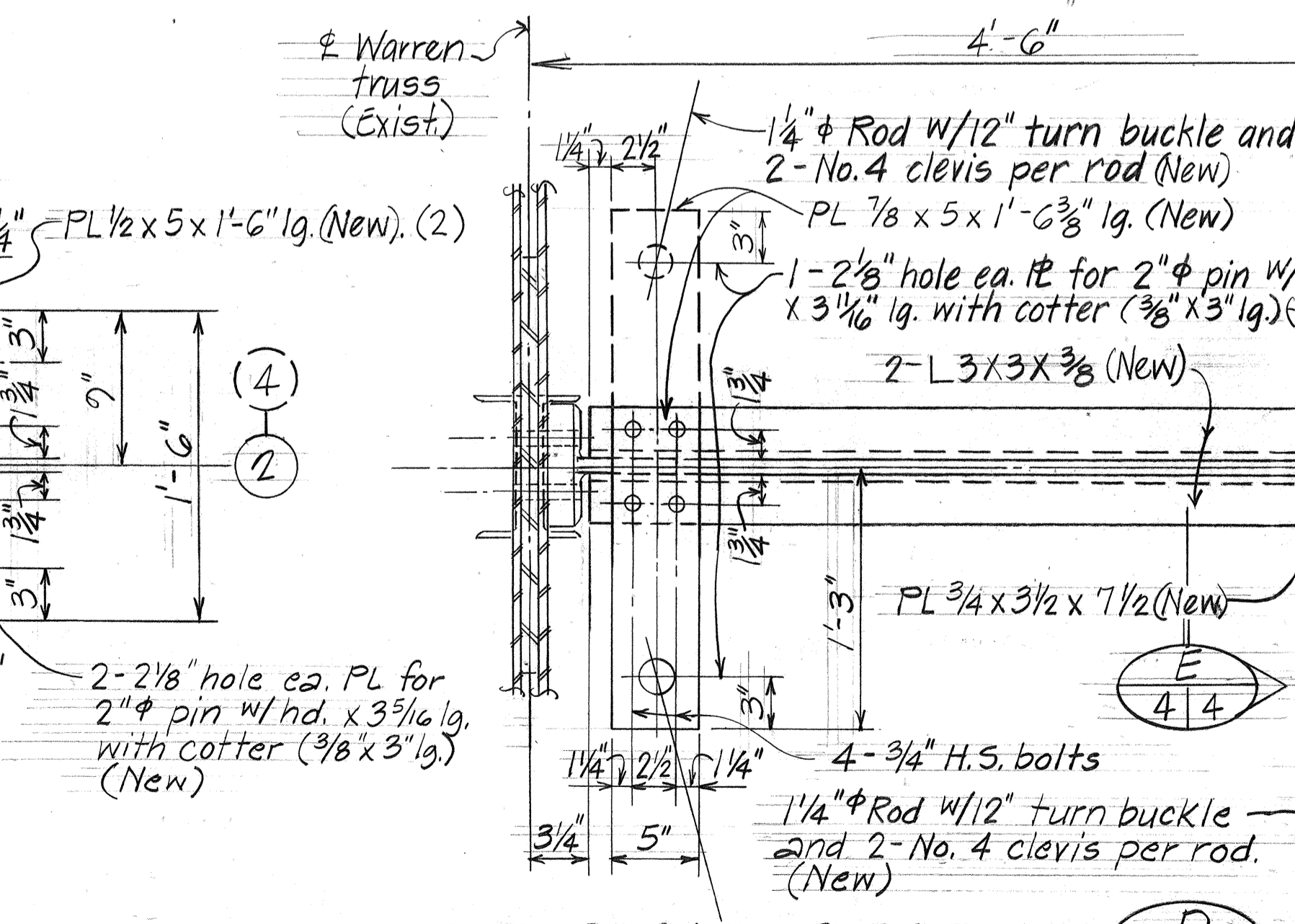
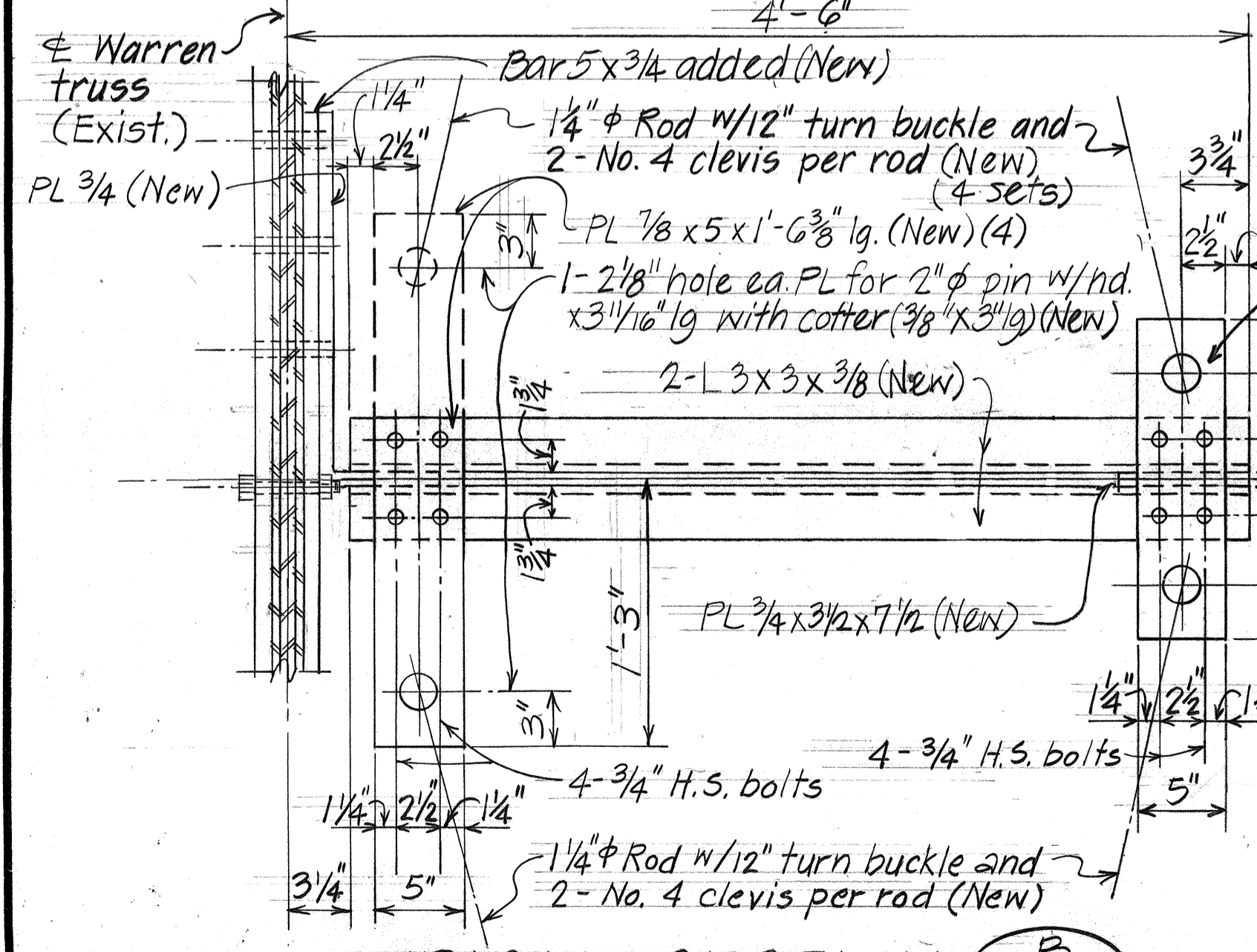
FED. ROAD DIST. NO.	STATE	PROJ. NO.	FISCAL YEAR	SHEET NO.	TOTAL SHEETS
HAWAII	HAW.	56D-01-81M	1981	5	21



SECTION 3/4
Scale: 1/2" = 1'-0"

SECTION 4/4
Scale: 1/2" = 1'-0"

SECTION 3/4 - TYPICAL TRUSS BRACING AT LINES 1, 3 & 5
SECTION 4/4 - SIMILAR EXCEPT OPPOSITE HAND
Scale: 1/2" = 1'-0"



TYPICAL SECTION 3/4
Scale: 1/2" = 1'-0"

TYPICAL SECTION 4/4
Scale: 1/2" = 1'-0"

SECTION E 4/4
Scale: 1/2" = 1'-0"

NOTE!

- All H.S. bolts for bracing members shall be ASTM A-490
- Tighten turn buckles to relieve all slack in rods.

STATE OF HAWAII
DEPARTMENT OF TRANSPORTATION
HIGHWAYS DIVISION

KUHIO HIGHWAY
REPAIRS TO HANAIEI BRIDGE
WARREN TRUSS: TYP TRUSS BRACING
AT LINE 1, 3 & 5

Proj. No. 56D-01-81M
Scale: As Shown Date: Aug. 1980

SHEET NO. 4 OF 15 SHEETS

DATE: Aug 82
DRAWN BY: G.L.L. & I.K.M.
DESIGNED BY: S.A.
CHECKED BY: D.C.O. & S.A.

