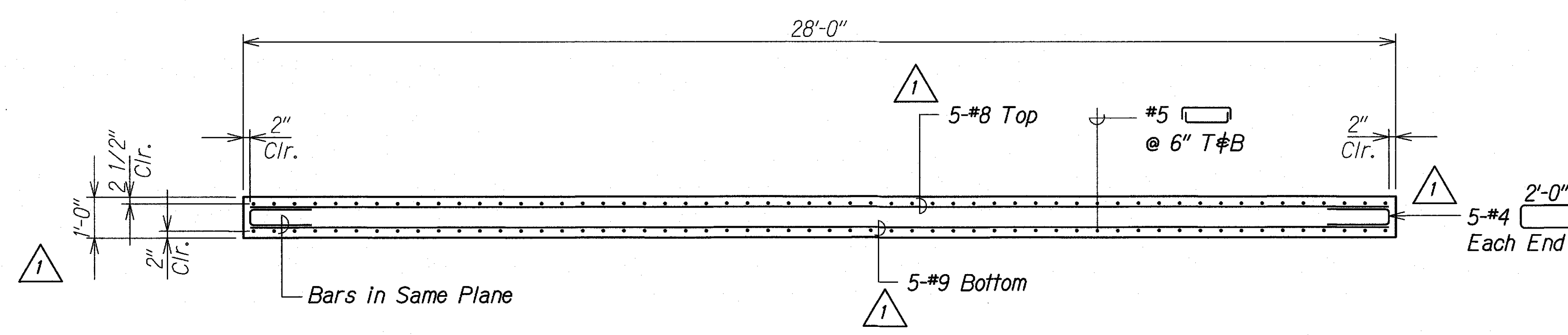
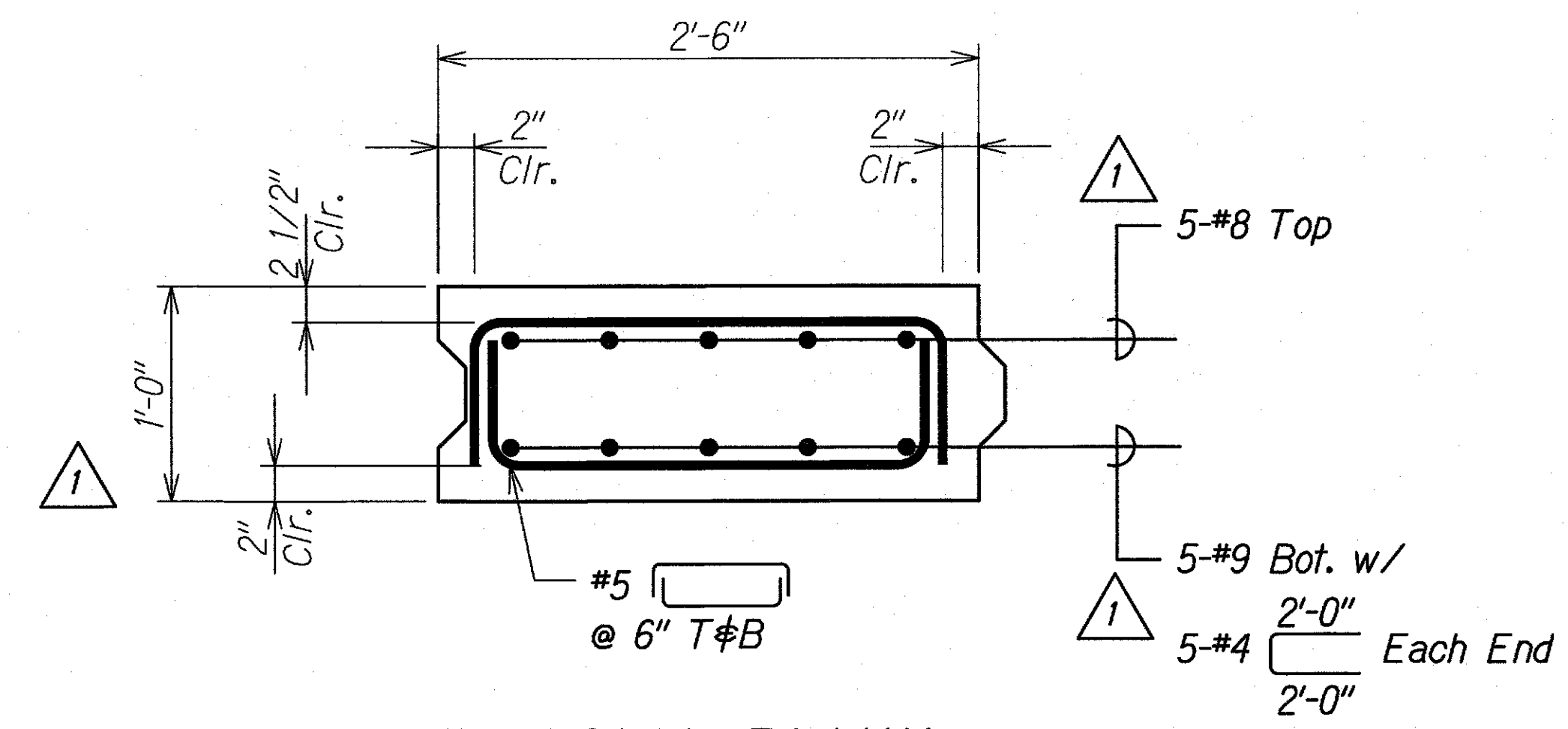


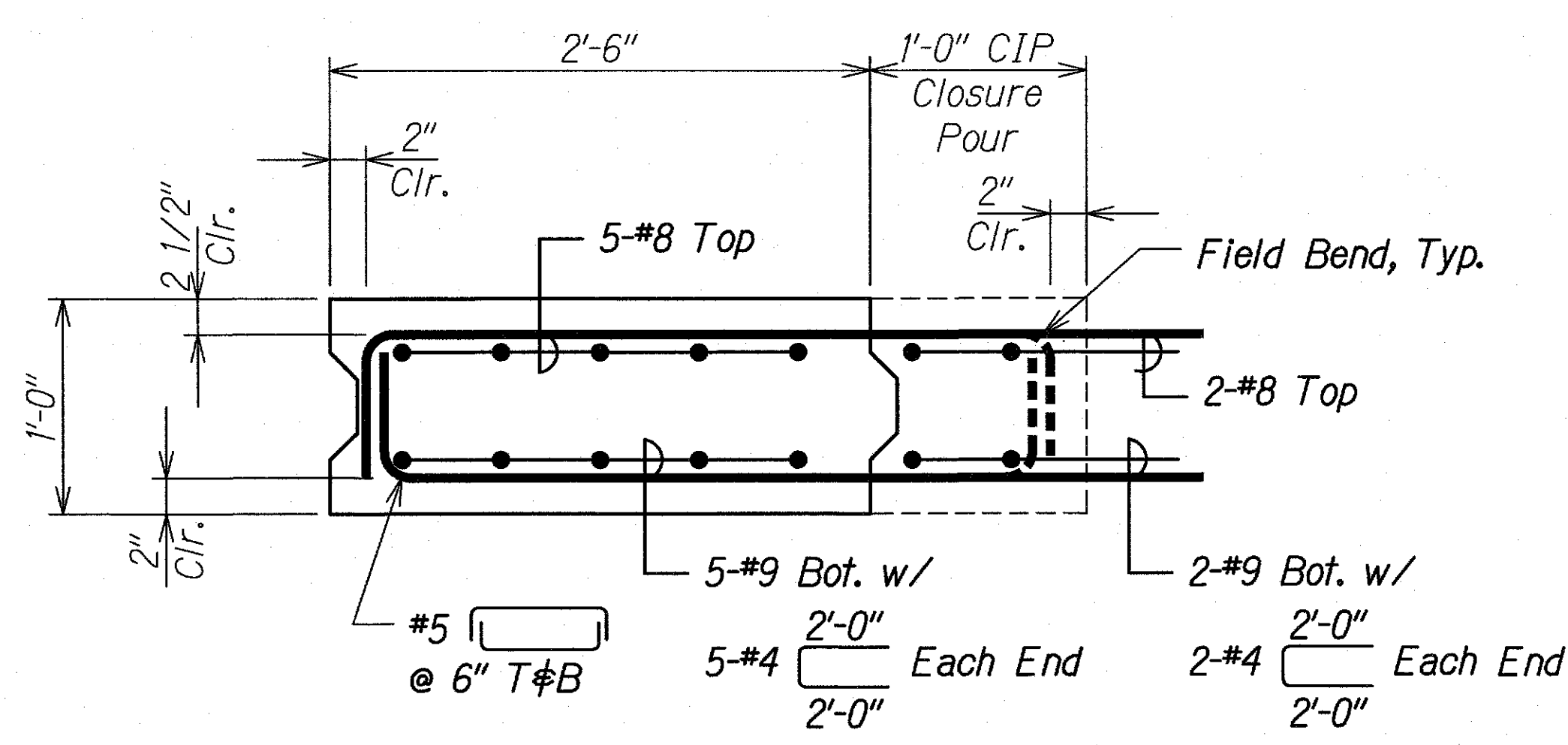
FED. ROAD DIST. NO.	STATE	FEDERAL AID PROJ. NO.	FISCAL YEAR	SHEET NO.	TOTAL SHEETS
HAWAII	HAW.	ER-19(001)	2018	29	30



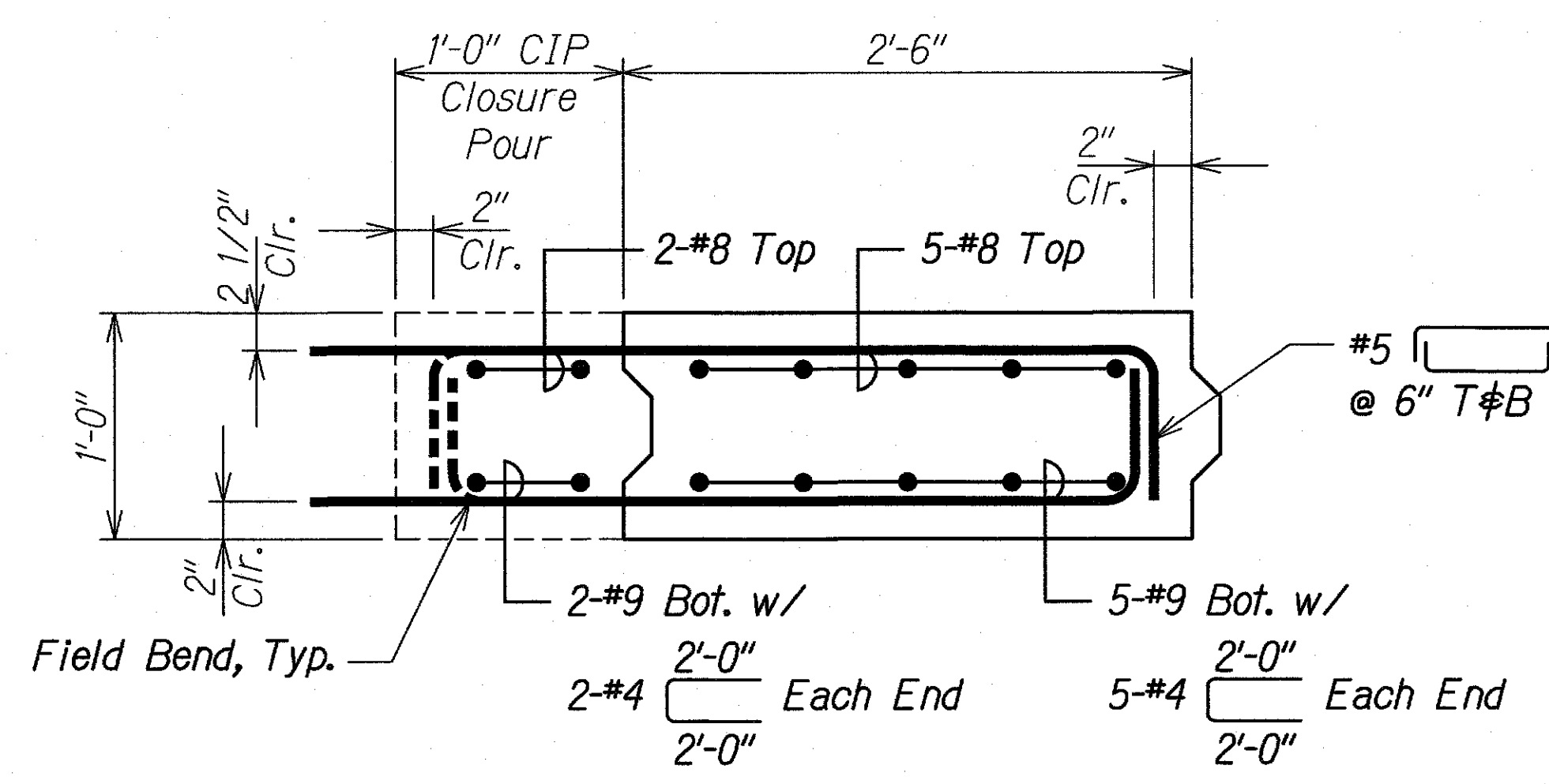
PLANK REINF. SECTION A
 Scale: 1 1/2" = 1'-0"
 S3.1 | S3.2



TYPICAL PLANK REINF. SECTION B
 Scale: 1 1/2" = 1'-0"
 S3.1 | S3.2



PLANK 1 REINF. SECTION C
 Scale: 1 1/2" = 1'-0"
 S3.2 | S3.2



PLANK 6 REINF. SECTION D
 Scale: 1 1/2" = 1'-0"
 S3.2 | S3.2

ORIGINAL PLAN	SURVEY PLOTTED BY	DATE
NOTE BOOK	DRAWN BY	
	DESIGNED BY	
	CHECKED BY	

DRAWING NAME: 2100 ONGOING 18-008.9-KUHO HWY STREAM PCY.01 CAU.10-03-20 LIMAHULU AS-BUILT LSP-S0302 PLANK.DWG PLOT TIME: 10-06-20, 3:55 PM

3/28/19	1	Revised Notes and Sections
DATE		REVISION

STATE OF HAWAII
 DEPARTMENT OF TRANSPORTATION
 HIGHWAYS DIVISION

**PRECAST PLANK
 REINFORCING SECTIONS**

**KAUAI EMERGENCY FLOOD REPAIRS & CLEANUP
 At Various Locations April 2018, Rte. 560
 Proj. No. ER-19(001)**

Scale: As Noted Date: Mar. 2019

SHEET No. S3.2 OF 3 SHEETS

FED. ROAD DIST. NO.	STATE	FEDERAL AID PROJ. NO.	FISCAL YEAR	SHEET NO.	TOTAL SHEETS
HAWAII	HAW.	ER-19(001)	2018	29S-1	30

PRECAST NOTES




1. Precast planks shall be match-cast.
2. See sheets S1.I plank layout.
3. Place SDI 3.0" Segment Coupler Welded Housing on each end of the ducts in the first installed.
4. Provide broom finish to the top surface of precast plank.
5. Use Sinak Lithium Cure or approved equal at a coverage rate of no less than 400 sq. ft. per gallon and cover with polyethylene film (ASTM C171). Encapsulate the curing concrete with the film to maintain a high humidity environment.
6. Concrete shall attain a minimum compressive strength of 4,000 psi and aged 2 days prior to lifting.
7. Ducts shall be covered to prevent debris and water from entering.

TENSIONING NOTES

1. Post-tensioning threaded bars shall be 1" diameter ASTM A722 Grade 150. Post-tensioning ducts shall be Schwager Davis, Inc.'s Corrugated Polypropylene ducts.
2. After tensioning, ducts shall be pressure grouted with Masterflow 1205 cable grout, Sika Grout 300 PT, or approved equal. Ducts shall have grouting vents at anchorages.
3. Ducts shall be secured to prevent misalignment or leakage during concrete pour.
4. A minimum Compressive Strength of 6000 psi shall be attained in the precast planks before tensioning.
5. Prevent ducts, at all times, from getting plugged or damaged.
6. Tension force per threaded bar shall be as required to compress all gaps between precast planks.
7. Prior to grouting and within two days after complete installation of bars, a corrosion inhibitor amine carboxylate powder (Cortec MCI-309) shall be blown into the ducts.

ORIGINAL PLAN	SURVEY PLOTTED BY	DATE
NOTE BOOK	DRAWN BY	
No.	TRACED BY	
	QUANTITIES BY	
	CHECKED BY	

DRAWING NAME: Z:\00 ONGOING\18-0053-KUHIO HWY STREAM PROJ\01 CAD\10-08-20 UMALUU AS-BUILT\LSP-SD303 PLANK.DWG PLOT TIME: 10-08-20, 3:55 PM)

3/28/19	 Added Notes
DATE	REVISION

STATE OF HAWAII DEPARTMENT OF TRANSPORTATION HIGHWAYS DIVISION	
PRECAST PLANK NOTES	
KAUAI EMERGENCY FLOOD REPAIRS & CLEANUP At Various Locations April 2018, Rte. 560 Proj. No. ER-19(001)	
Scale: As Noted	Date: Mar. 2019
SHEET No. S32A OF 3 SHEETS	