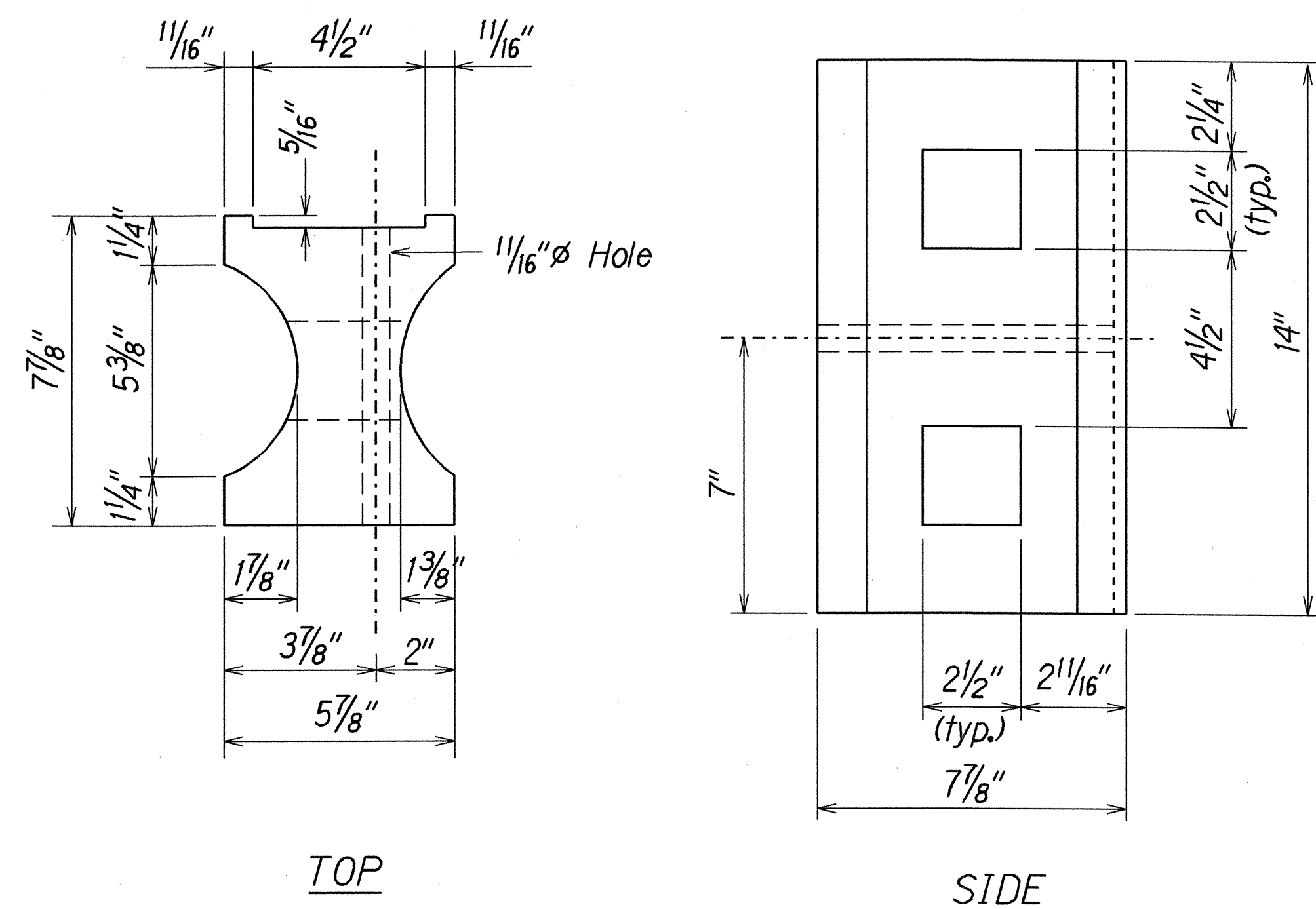


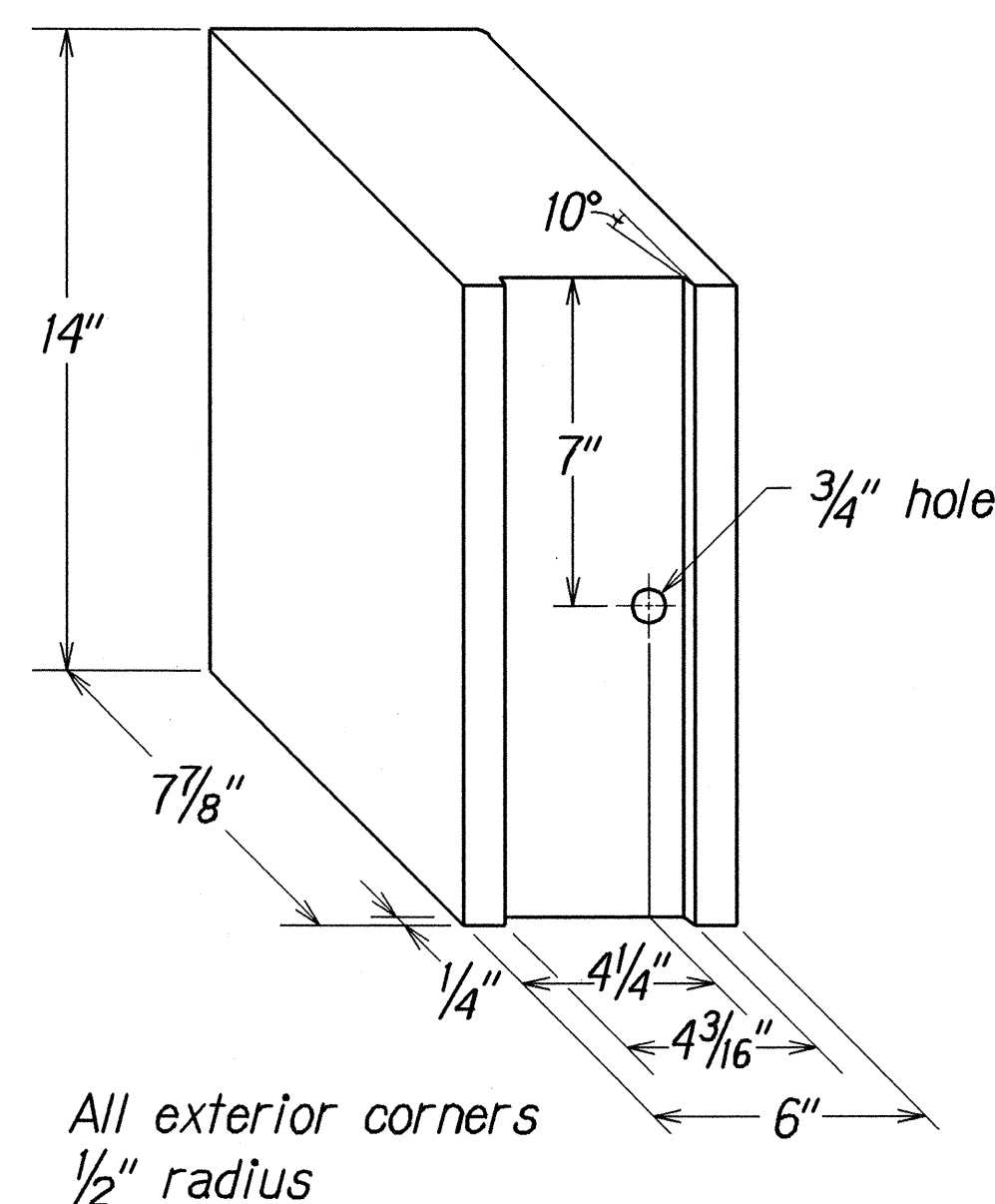
FED. ROAD DIST. NO.	STATE	PROJ. NO.	FISCAL YEAR	SHEET NO.	TOTAL SHEETS
HAWAII	HAW.	550A-01-01M	2002	9	20

GENERAL NOTES

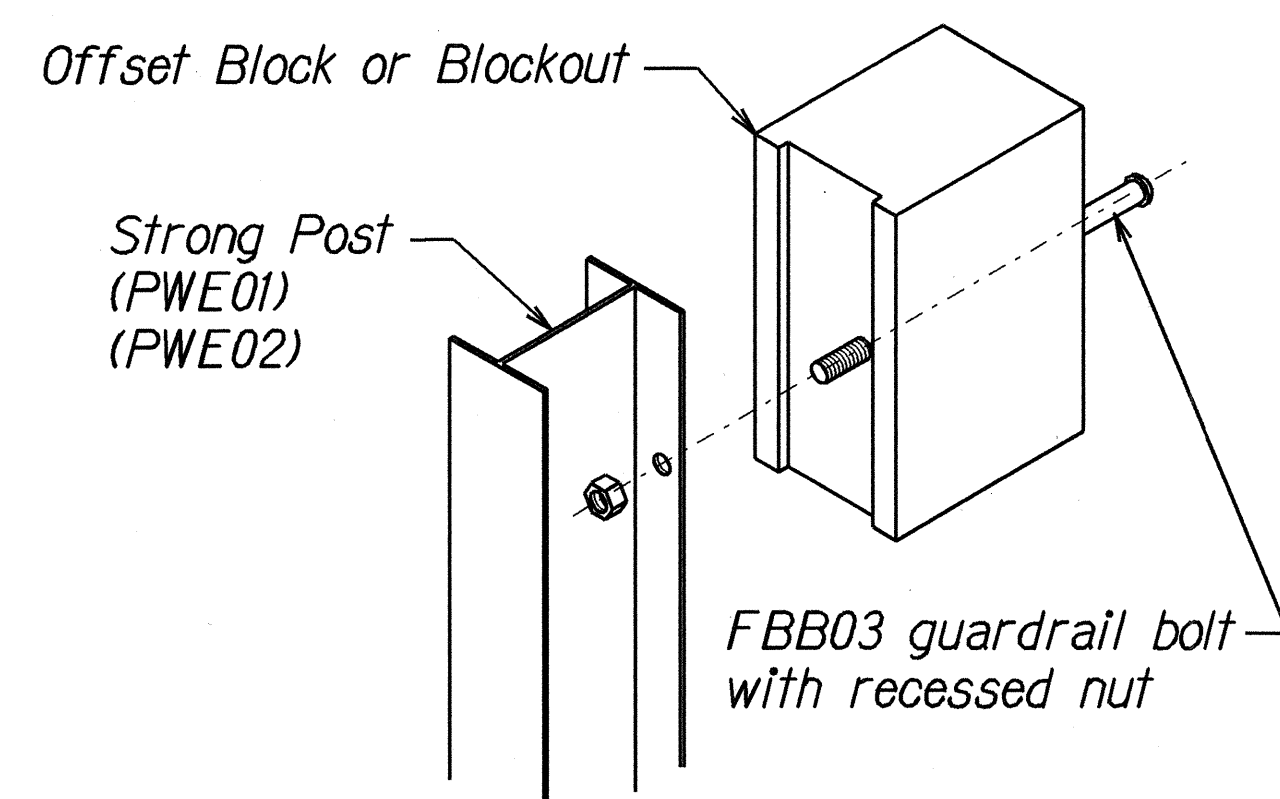
1. All hardware, posts and fasteners shall be hot-dip zinc coated galvanized after fabrication. No punching, drilling or cutting will be permitted after galvanizing.
2. Where conditions require, special post lengths in increments of 6 inches may be specified.
3. All fasteners, posts, and rail elements (i.e. FBB03, PWE01, RWM02b, etc.) shall conform to the latest edition and amendments of "A Guide to Standardized Highway Barrier Rail Hardware," a report prepared and approved by the AASHTO-AGC-ARTBA Joint Cooperative Committee, Subcommittee On New Highway Materials, Task Force 13 Report. Dimensions of fasteners, posts and rail elements have been converted from metric units into their present form.
4. The Recycled Plastic Block or Offset Block shall be approved by the State.
5. Reflector Markers (RM-5) mounted on guardrails shall be spaced every 50 feet. RM-5's shall not be installed on the FLEAT-350 Terminal Sections.



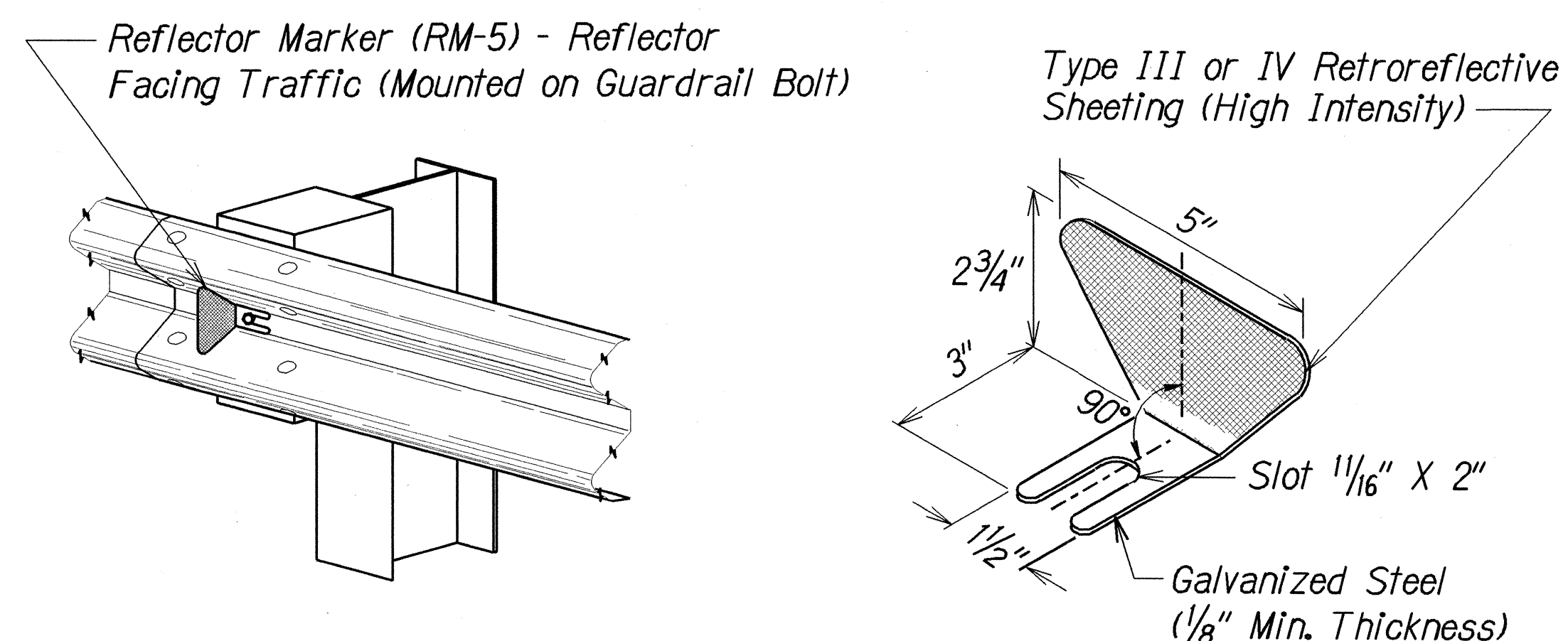
TOP
SIDE
RECYCLED PLASTIC BLOCKOUT (TYPE I)



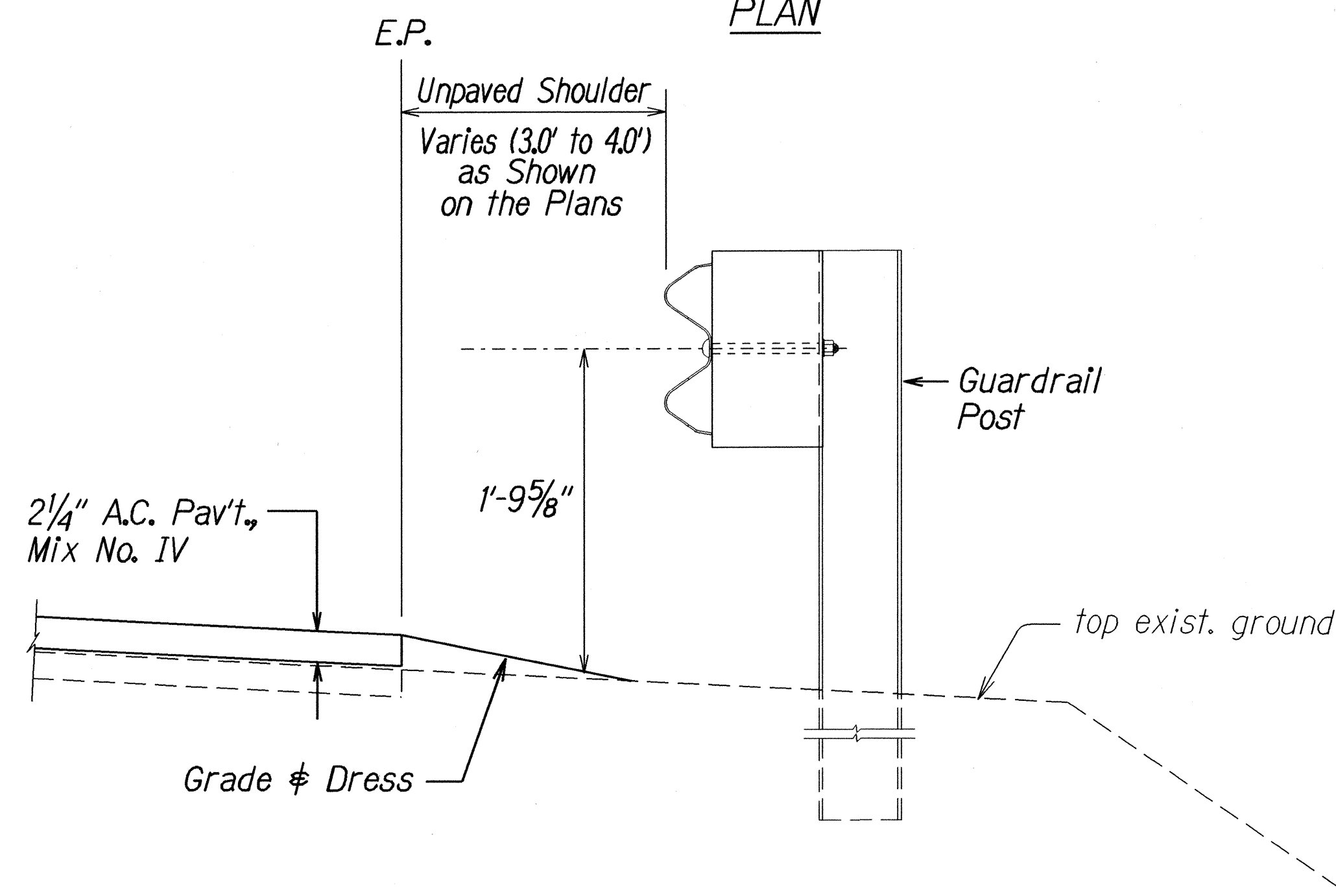
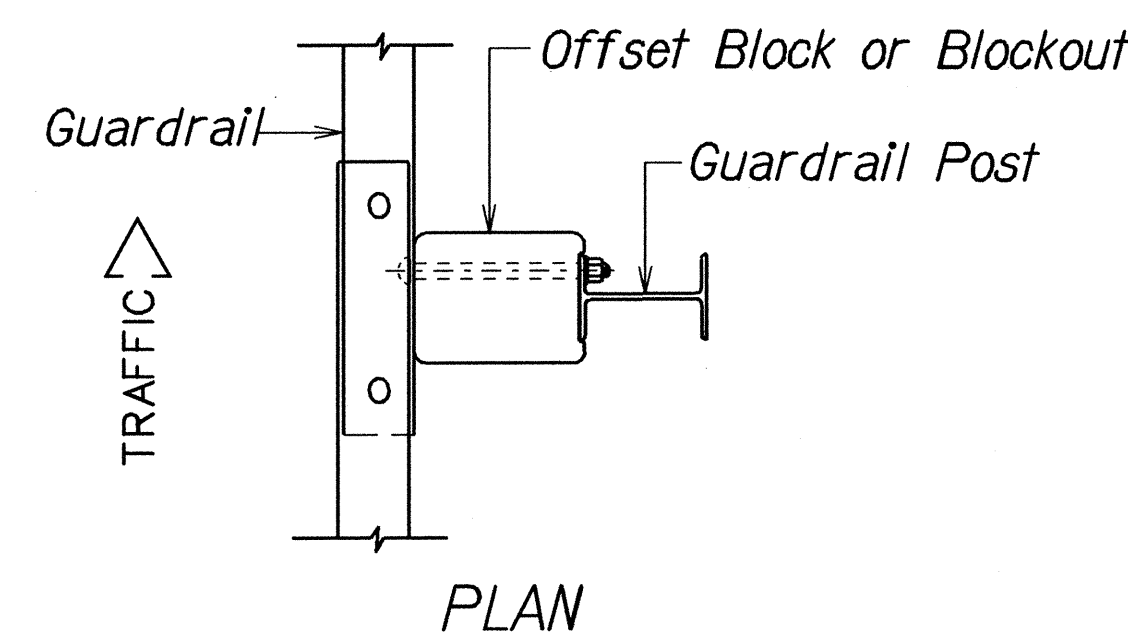
RECYCLED POLYETHYLENE
OFFSET BLOCK (TYPE II)



Exploded View
(Rail, washer and reflector not shown)
STEEL POST AND BLOCK DETAIL



REFLECTOR MARKER (RM-5) DETAIL AND TYPICAL INSTALLATION



ELEVATION
TYPICAL GUARDRAIL INSTALLATION

STATE OF HAWAII
DEPARTMENT OF TRANSPORTATION
HIGHWAYS DIVISION

GUARDRAIL DETAILS & NOTES
WAIMEA CANYON DRIVE RESURFACING
Vicinity of Kokee Road Intersection
Project No. 550A-01-01M
Scale : As Shown Date: June 2001

SHEET No. 1 OF 3 SHEETS

SURVEY PLOTTED BY	DATE
DRAWN BY	
DESIGNED BY	
QUANTITIES BY	
CHECKED BY	
ORIGINAL PLAN	
NOTE BOOK	
DESIGNED BY	
CHECKED BY	