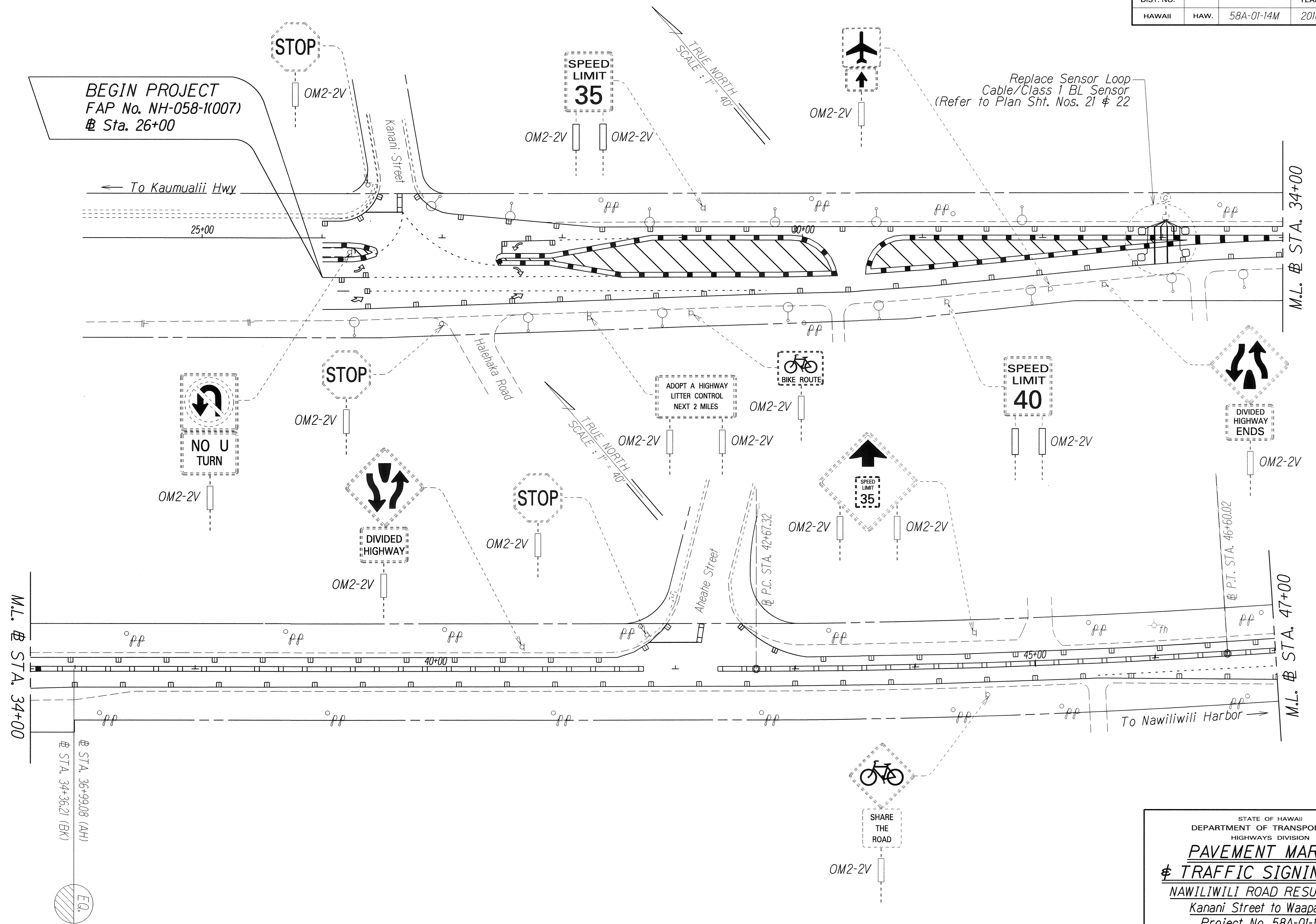


FED. ROAD DIST. NO.	STATE	PROJ. NO.	FISCAL YEAR	SHEET NO.	TOTAL SHEETS
HAWAII	HAW.	58A-01-14M	2016	16	23



DATE	_____
SURVEY PLOTTED BY	_____
DRAWN BY	_____
TRACED BY	_____
DESIGNED BY	_____
QUANTITIES BY	_____
CHECKED BY	_____
ORIGINAL PLAN	_____
NOTE BOOK	_____
NO.	_____

STATE OF HAWAII  
DEPARTMENT OF TRANSPORTATION  
HIGHWAYS DIVISION

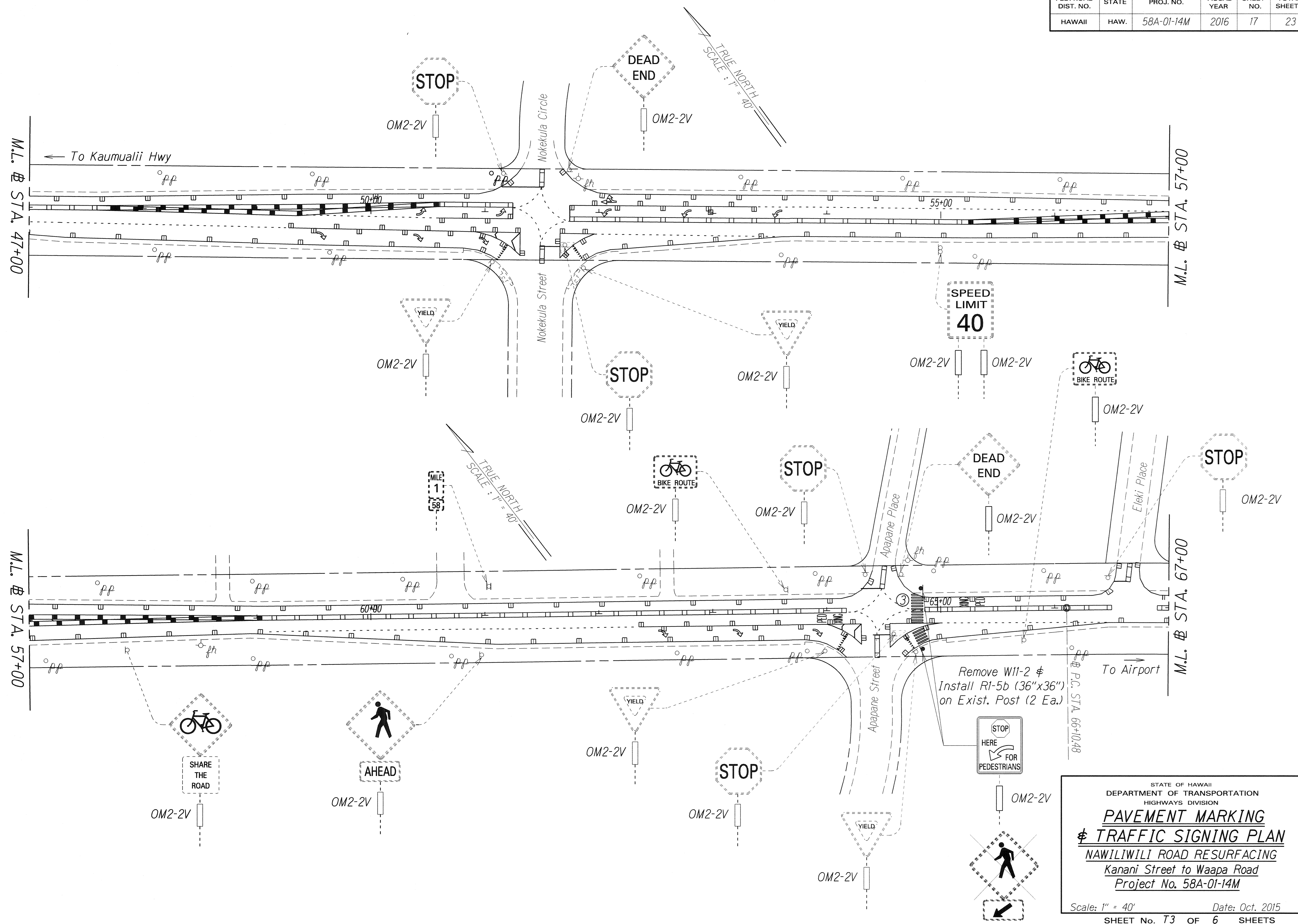
**PAVEMENT MARKING**  
**# TRAFFIC SIGNING PLAN**

**NAWILIWILI ROAD RESURFACING**  
Kanani Street to Waapa Road  
Project No. 58A-01-14M

Scale: 1" = 40' Date: Oct. 2015

SHEET No. T2 OF 6 SHEETS

FED. ROAD DIST. NO.	STATE	PROJ. NO.	FISCAL YEAR	SHEET NO.	TOTAL SHEETS
HAWAII	HAW.	58A-01-14M	2016	17	23



DESIGNED BY	DATE
DRAWN BY	
TRACED BY	
DESIGNED BY	
QUANTITIES BY	
CHECKED BY	

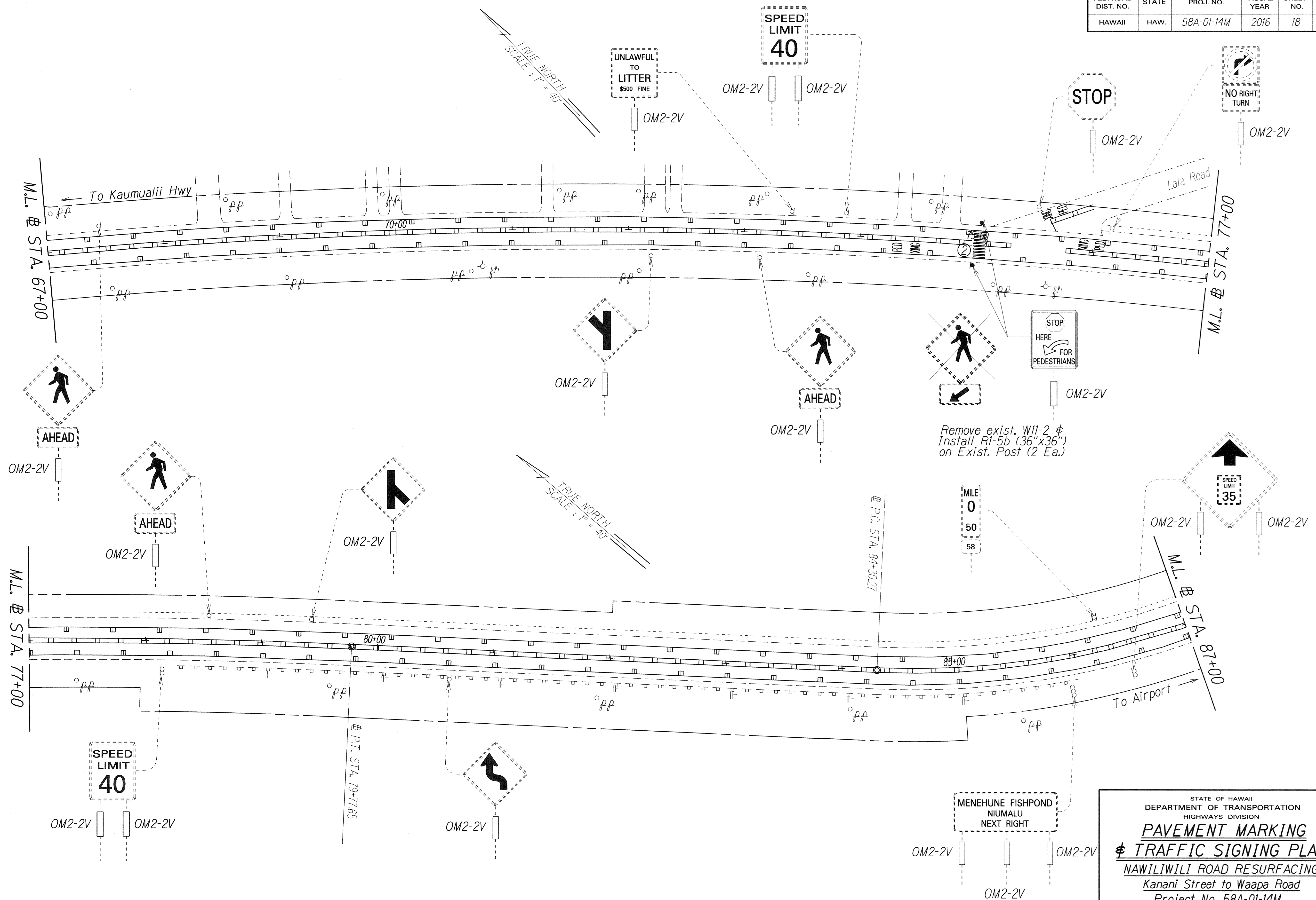
STATE OF HAWAII  
DEPARTMENT OF TRANSPORTATION  
HIGHWAYS DIVISION

**PAVEMENT MARKING**  
**TRAFFIC SIGNING PLAN**

**NAWILIWILI ROAD RESURFACING**  
Kanani Street to Waapa Road  
Project No. 58A-01-14M

Scale: 1" = 40' Date: Oct. 2015  
SHEET No. T3 OF 6 SHEETS

FED. ROAD DIST. NO.	STATE	PROJ. NO.	FISCAL YEAR	SHEET NO.	TOTAL SHEETS
HAWAII	HAW.	58A-01-14M	2016	18	23



DATE	_____
DESIGNED BY	_____
DRAWN BY	_____
CHECKED BY	_____
APPROVED BY	_____

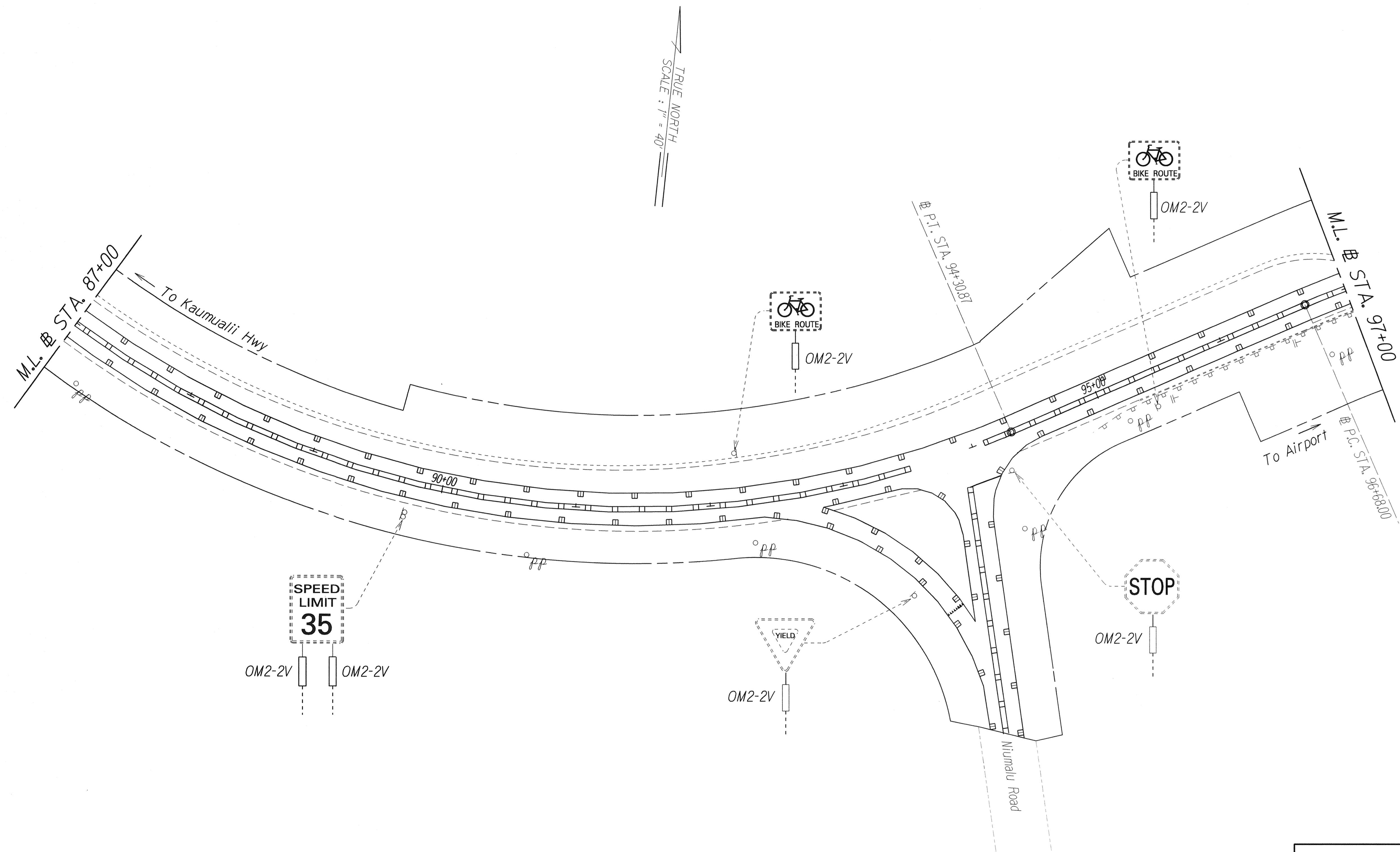
STATE OF HAWAII  
DEPARTMENT OF TRANSPORTATION  
HIGHWAYS DIVISION

**PAVEMENT MARKING  
& TRAFFIC SIGNING PLAN**

**NAWILIWILI ROAD RESURFACING**  
Kanani Street to Waapa Road  
Project No. 58A-01-14M

Scale: 1" = 40' Date: Oct. 2015  
SHEET No. 14 OF 6 SHEETS

FED. ROAD DIST. NO.	STATE	PROJ. NO.	FISCAL YEAR	SHEET NO.	TOTAL SHEETS
HAWAII	HAW.	58A-01-14M	2016	19	23



ORIGINAL PLAN	DATE
SURVEY PLOTTED BY	
DRAWN BY	
TRACED BY	
DESIGNED BY	
QUANTITIES BY	
CHECKED BY	

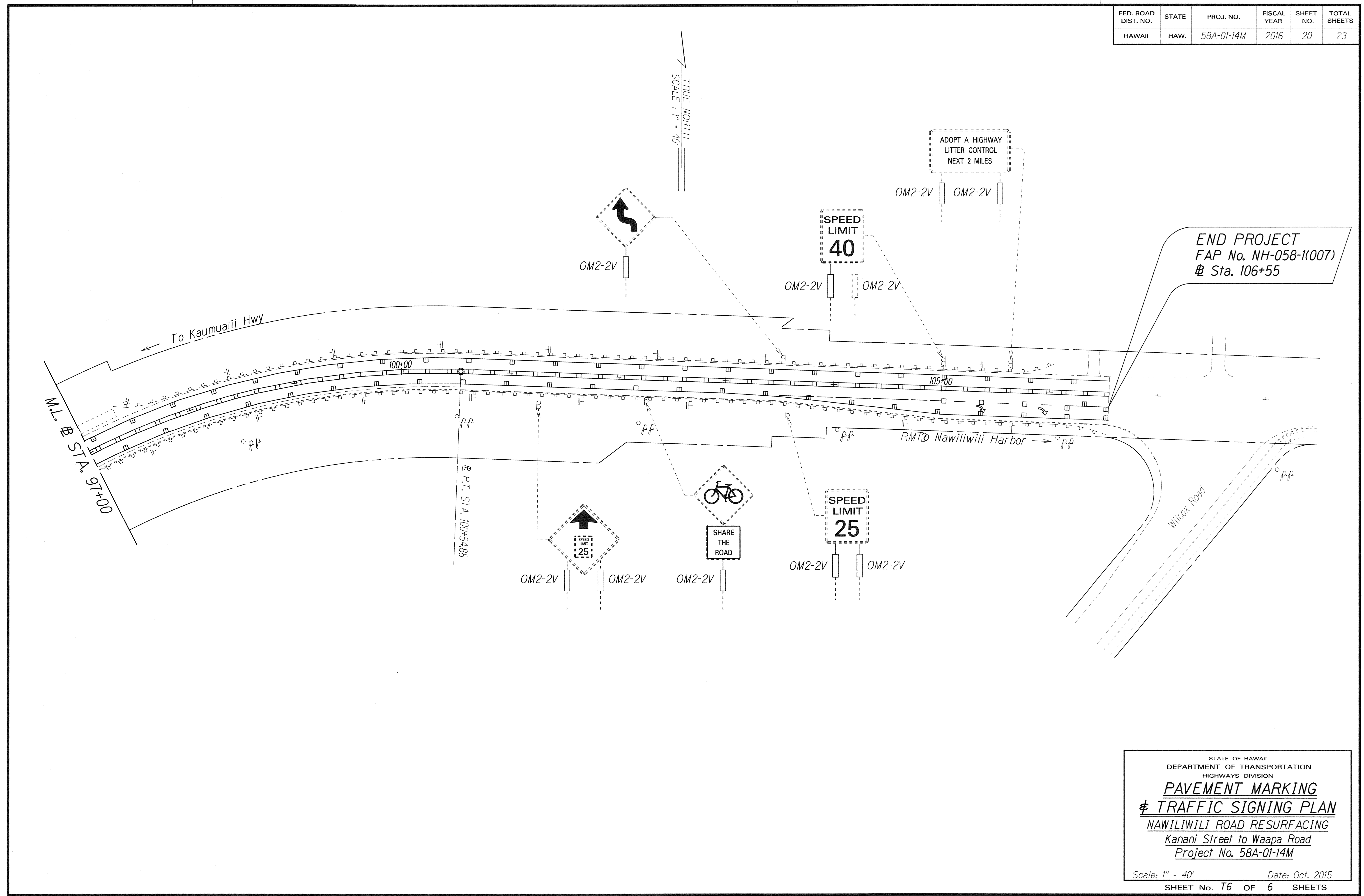
STATE OF HAWAII  
DEPARTMENT OF TRANSPORTATION  
HIGHWAYS DIVISION

**PAVEMENT MARKING**  
**TRAFFIC SIGNING PLAN**

**NAWILIILI ROAD RESURFACING**  
Kanani Street to Waapa Road  
Project No. 58A-01-14M

Scale: 1" = 40' Date: Oct. 2016  
SHEET No. 19 OF 6 SHEETS

FED. ROAD DIST. NO.	STATE	PROJ. NO.	FISCAL YEAR	SHEET NO.	TOTAL SHEETS
HAWAII	HAW.	58A-01-14M	2016	20	23



END PROJECT  
 FAP No. NH-058-1(007)  
 @ Sta. 106+55

DESIGNED BY	DATE
DRAWN BY	
TRACED BY	
DESIGNED BY	
QUANTITIES BY	
CHECKED BY	

STATE OF HAWAII  
 DEPARTMENT OF TRANSPORTATION  
 HIGHWAYS DIVISION

**PAVEMENT MARKING**  
**TRAFFIC SIGNING PLAN**

**NAWILIILI ROAD RESURFACING**  
 Kanani Street to Waapa Road  
 Project No. 58A-01-14M

Scale: 1" = 40' Date: Oct. 2015  
 SHEET No. T6 OF 6 SHEETS