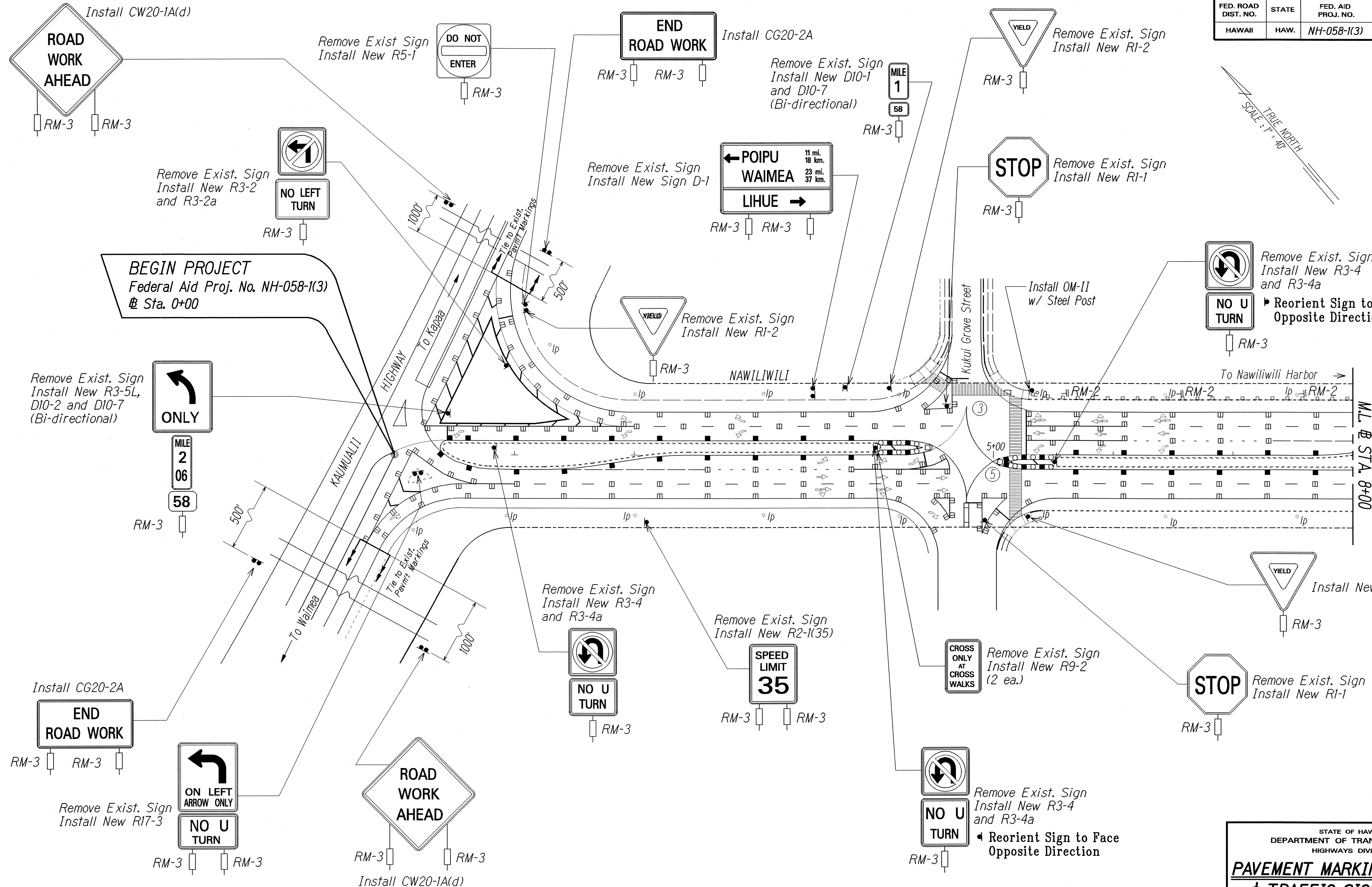


FED. ROAD DIST. NO.	STATE	FED. AID PROJ. NO.	FISCAL YEAR	SHEET NO.	TOTAL SHEETS
HAWAII	HAW.	NH-058-1(3)	2001	28	39



BEGIN PROJECT
Federal Aid Proj. No. NH-058-1(3)
@ Sta. 0+00

Remove Exist. Sign
Install New R3-5L,
D10-2 and D10-7
(Bi-directional)

Remove Exist. Sign
Install New R5-1

END ROAD WORK

Install CG20-2A

Remove Exist. Sign
Install New D10-1
and D10-7
(Bi-directional)

Remove Exist. Sign
Install New R1-2

Remove Exist. Sign
Install New R1-1

Remove Exist. Sign
Install New R3-4
and R3-4a
Reorient Sign to Face
Opposite Direction

Remove Exist. Sign
Install New R1-2

Install OM-II
w/ Steel Post

Remove Exist. Sign
Install New R3-4
and R3-4a

Remove Exist. Sign
Install New R2-1(35)

Remove Exist. Sign
Install New R9-2
(2 ea.)

Remove Exist. Sign
Install New R1-1

Install CG20-2A

Remove Exist. Sign
Install New R17-3

Install CW20-1A(d)

Remove Exist. Sign
Install New R3-4
and R3-4a
Reorient Sign to Face
Opposite Direction

LEGEND FOR AS-BUILT POSTINGS

	Squiggly line for as-built deletion
	Double line for as-built deletion
Roadway	Text for as-built posting

STATE OF HAWAII
DEPARTMENT OF TRANSPORTATION
HIGHWAYS DIVISION

**PAVEMENT MARKING, STRIPING
& TRAFFIC SIGNING PLAN**

**NAWILIWILI ROAD RESURFACING
Kaumualii Highway to Waapa Road
Federal Aid Proj. No. NH-058-1(3)**

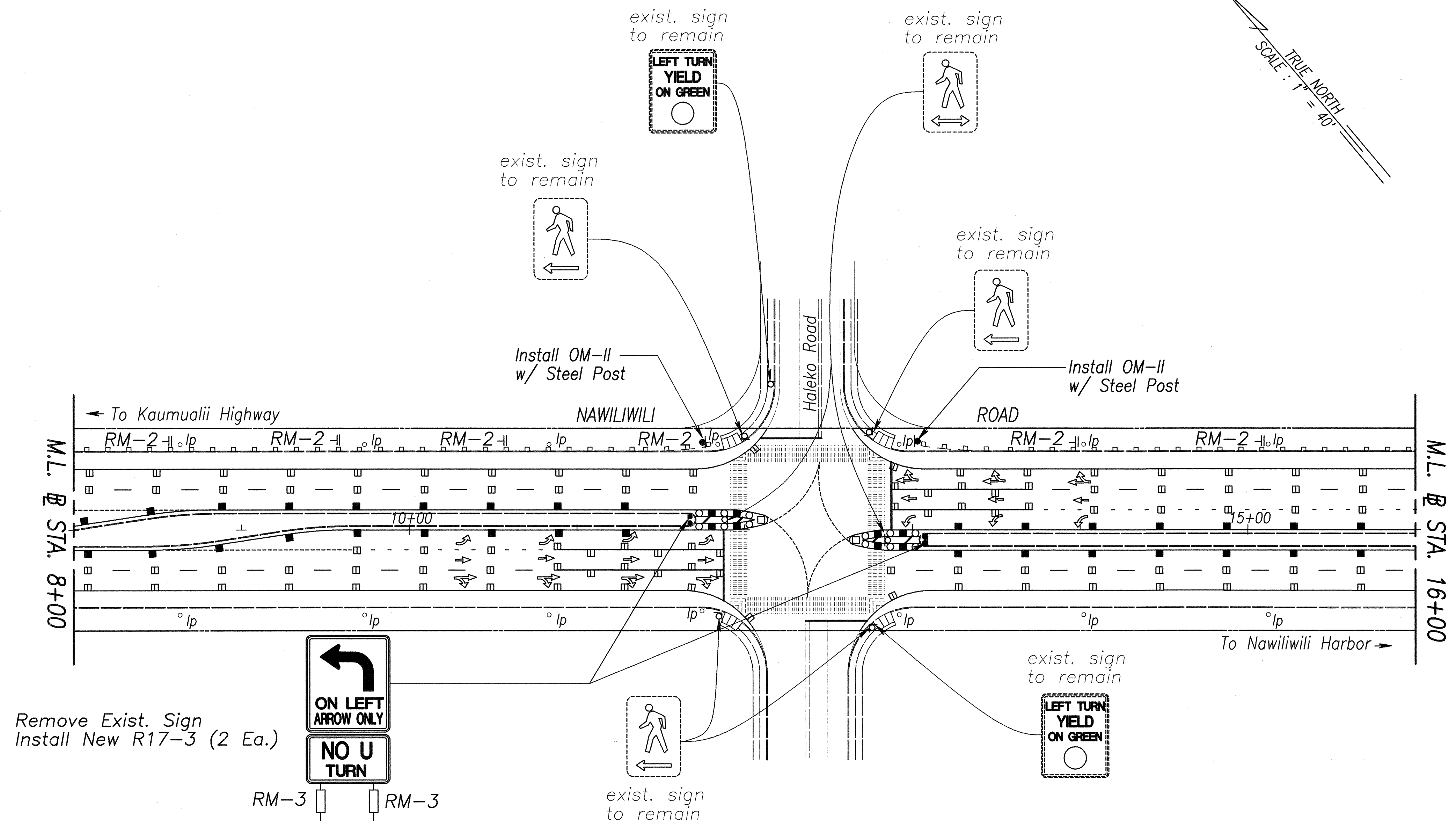
Scale: 1" = 40' Date: Nov. 2000

SHEET No. 1 OF 8 SHEETS

DATE	9-2-00
DESIGNED BY	S. H. H. AND
CHECKED BY	J. T. ALLEN
APPROVED BY	
NOTED BY	
QUANTITIES BY	
REVISIONS	

"AS-BUILT"

FED. ROAD DIST. NO.	STATE	FED. AID PROJ. NO.	FISCAL YEAR	SHEET NO.	TOTAL SHEETS
HAWAII	HAW.	NH-058-1(3)	2001	29	39



Remove Exist. Sign
Install New R17-3 (2 Ea.)

RM-3 RM-3

ORIGINAL PLAN	DATE
SURVEY PLOTTED BY	9-8-00
DRAWN BY H. Eulice	
TRACED BY	
DESIGNED BY S. Harano	
QUANTITIES BY	
CHECKED BY D. Alcon	
FILE	

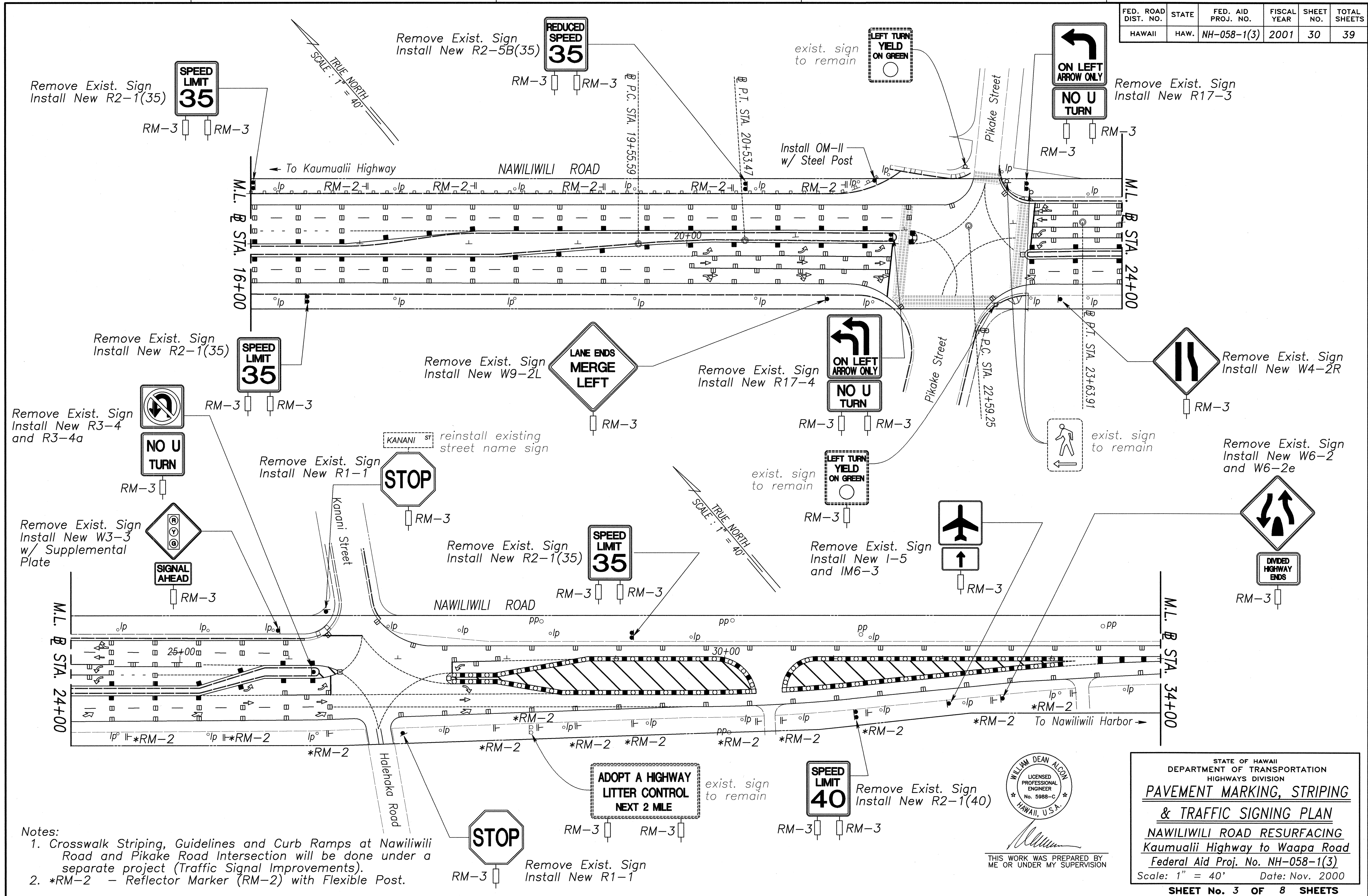
Note:
Crosswalk Striping, Guidelines and Curb Ramps at Nawiliwili Road and Haleko Road Intersection will be done under a separate project (Traffic Signal Improvements).



THIS WORK WAS PREPARED BY
ME OR UNDER MY SUPERVISION

STATE OF HAWAII
DEPARTMENT OF TRANSPORTATION
HIGHWAYS DIVISION
**PAVEMENT MARKING, STRIPING
& TRAFFIC SIGNING PLAN**
NAWILIWILI ROAD RESURFACING
Kaunualii Highway to Waapa Road
Federal Aid Proj. No. NH-058-1(3)
Scale: 1" = 40' Date: Nov. 2000

FED. ROAD DIST. NO.	STATE	FED. AID PROJ. NO.	FISCAL YEAR	SHEET NO.	TOTAL SHEETS
HAWAII	HAW.	NH-058-1(3)	2001	30	39



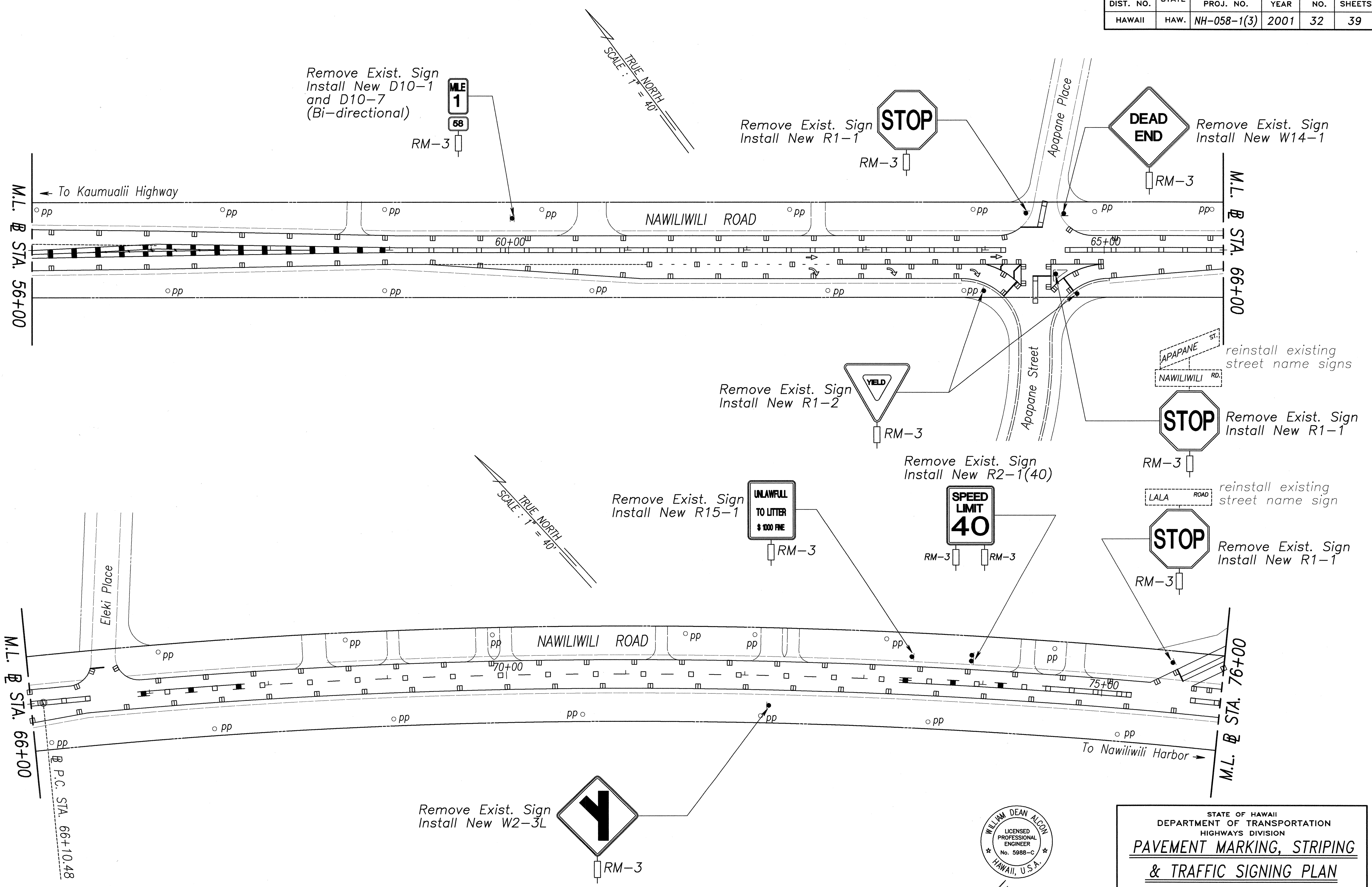
- Notes:
1. Crosswalk Striping, Guidelines and Curb Ramps at Nawiliwili Road and Pikake Road Intersection will be done under a separate project (Traffic Signal Improvements).
 2. *RM-2 - Reflector Marker (RM-2) with Flexible Post.

DATE 9-8-00
 SURVEY PLOTTED BY
 DRAWN BY H. Eulice
 NOTE BOOK DESIGNED BY S. Harano
 QUANTITIES BY
 CHECKED BY D. Alcan

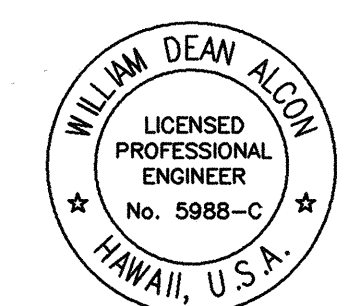
WILLIAM DEAN ALCON
 LICENSED PROFESSIONAL ENGINEER
 No. 5988-C
 HAWAII, U.S.A.
 THIS WORK WAS PREPARED BY ME OR UNDER MY SUPERVISION

STATE OF HAWAII
 DEPARTMENT OF TRANSPORTATION
 HIGHWAYS DIVISION
**PAVEMENT MARKING, STRIPING
 & TRAFFIC SIGNING PLAN**
 NAWILIWILI ROAD RESURFACING
 Kaunualii Highway to Waapa Road
 Federal Aid Proj. No. NH-058-1(3)
 Scale: 1" = 40' Date: Nov. 2000
SHEET No. 3 OF 8 SHEETS

FED. ROAD DIST. NO.	STATE	FED. AID PROJ. NO.	FISCAL YEAR	SHEET NO.	TOTAL SHEETS
HAWAII	HAW.	NH-058-1(3)	2001	32	39



DATE	9-8-00
SURVEY PLANNED BY	H. Eulice
DRAWN BY	H. Eulice
TRACED BY	H. Eulice
NOTE BOOK DESIGNED BY	P.S. Harano
QUANTITIES BY	H. Eulice
CHECKED BY	H. Eulice
ORIGINAL PLAN	
NOTE	
REVISION	



THIS WORK WAS PREPARED BY ME OR UNDER MY SUPERVISION

STATE OF HAWAII
DEPARTMENT OF TRANSPORTATION
HIGHWAYS DIVISION
**PAVEMENT MARKING, STRIPING
& TRAFFIC SIGNING PLAN**
NAWILIWILI ROAD RESURFACING
Kaunualii Highway to Waapa Road
Federal Aid Proj. No. NH-058-1(3)
Scale: 1" = 40' Date: Nov. 2000

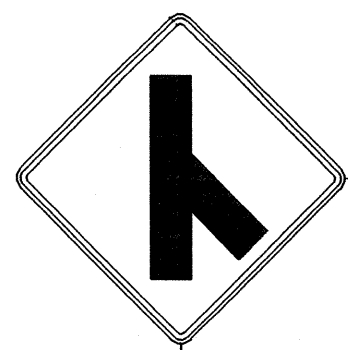
FED. ROAD DIST. NO.	STATE	FED. AID PROJ. NO.	FISCAL YEAR	SHEET NO.	TOTAL SHEETS
HAWAII	HAW.	NH-058-1(3)	2001	33	39

Remove Exist. Sign
Install New R3-1
and R3-1a



RM-3

Remove Exist. Sign
Install New W2-3R



RM-3

Sta. 76+50 to Sta. 86+50
Double 4" Center Striping
(Yellow)

TRUE NORTH
SCALE: 1" = 40'

⊕ P.C. STA. 84+30.27

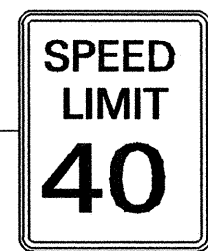
M.L. ⊕ STA. 76+00

M.L. ⊕ STA. 86+00

Install OM-II
w/ Flexible Post

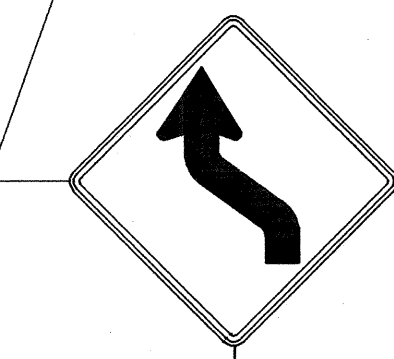
Install OM-II
w/ Flexible Post

Remove Exist. Sign
Install New R2-1(40)



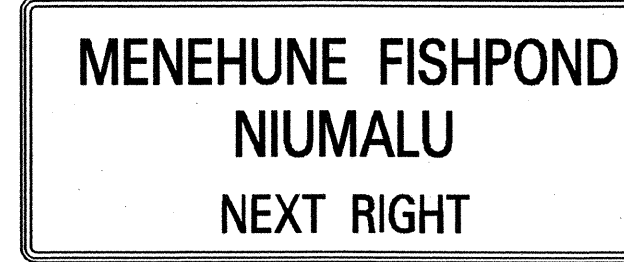
RM-3 RM-3

Remove Exist. Sign
Install New W1-4L



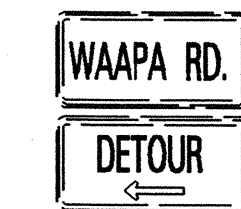
RM-3

Remove Exist. Sign
Install New D-2



RM-3 RM-3 RM-3

exist. sign
to remain



RM-3

TRUE NORTH
SCALE: 1" = 40'

⊕ P.T. STA. 94+30.27

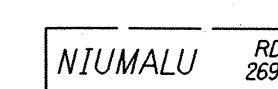
M.L. ⊕ STA. 96+00

M.L. ⊕ STA. 86+00

NAWILIWILI ROAD

To Nawiliwili Harbor

Install OM-II
w/ Flexible Post

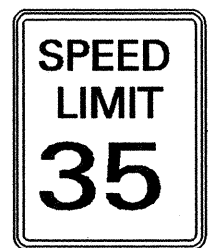


RM-3

reinstall existing
street name sign

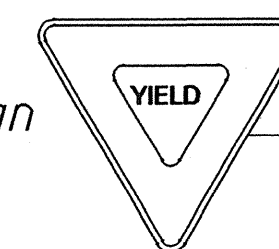
Remove Exist. Sign
Install New R1-1

Remove Exist. Sign
Install New R2-1(35)



RM-3 RM-3

Remove Exist. Sign
Install New R1-2



RM-3

DATE	BY
3/2/00	W. D. ALLEN
3/2/00	S. HIGGINS
3/2/00	W. D. ALLEN

GENERAL PLAN
NOTE: THIS PLAN IS A PART OF THE PROJECT AND SHOULD BE USED IN CONJUNCTION WITH THE PROJECT MANUAL.
DATE: 3/2/00

LEGEND FOR AS-BUILT POSTINGS

- ~~~~~ Squiggly line for as-built deletion
- ==== Double line for as-built deletion
- Roadway Text for as-built posting

STATE OF HAWAII
DEPARTMENT OF TRANSPORTATION
HIGHWAYS DIVISION

**PAVEMENT MARKING, STRIPING
& TRAFFIC SIGNING PLAN**

**NAWILIWILI ROAD RESURFACING
Kaumualii Highway to Waapa Road
Federal Aid Proj. No. NH-058-1(3)**

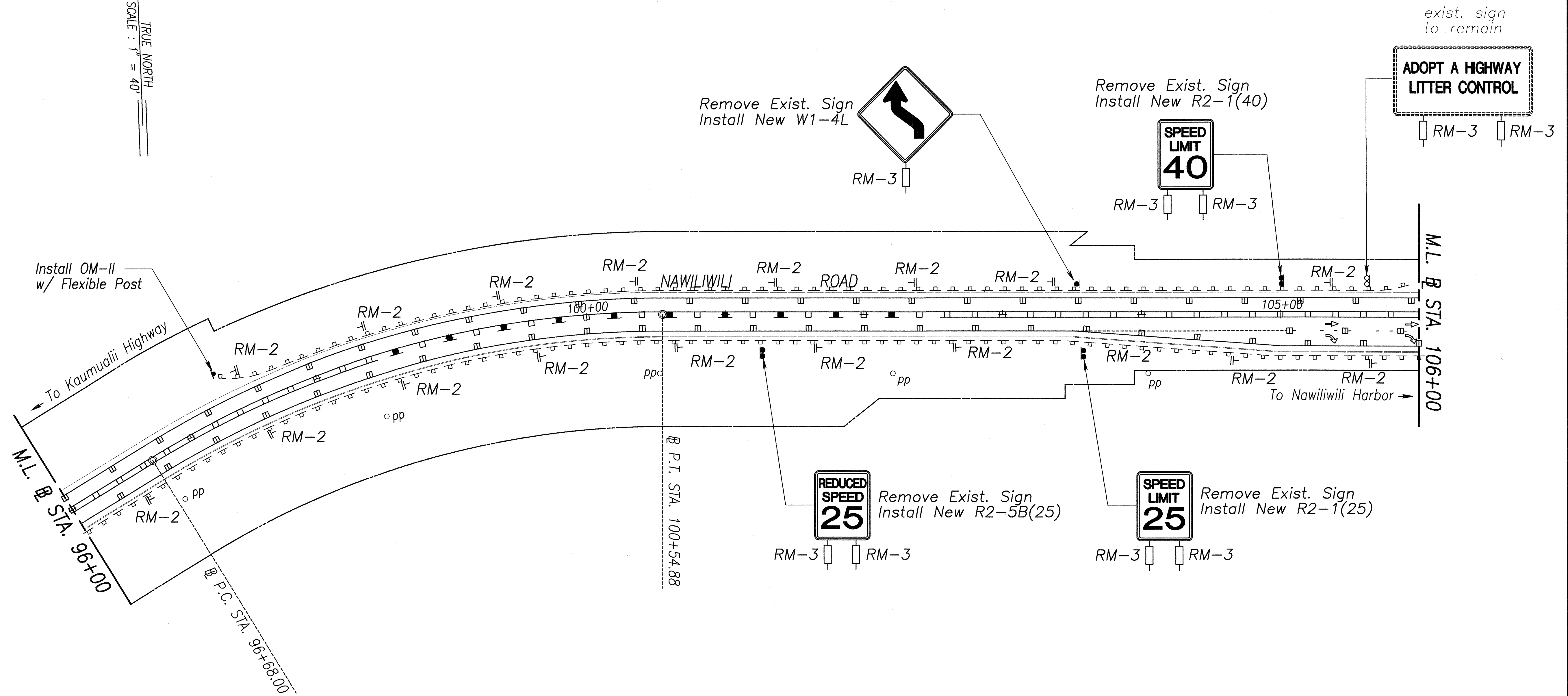
Scale: 1" = 40' Date: Nov. 2000

SHEET No. 6 OF 8 SHEETS

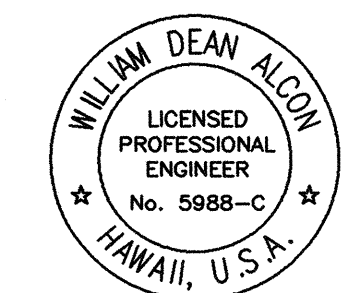
"AS-BUILT"

FED. ROAD DIST. NO.	STATE	FED. AID PROJ. NO.	FISCAL YEAR	SHEET NO.	TOTAL SHEETS
HAWAII	HAW.	NH-058-1(3)	2001	34	39

TRUE NORTH
SCALE: 1" = 40'



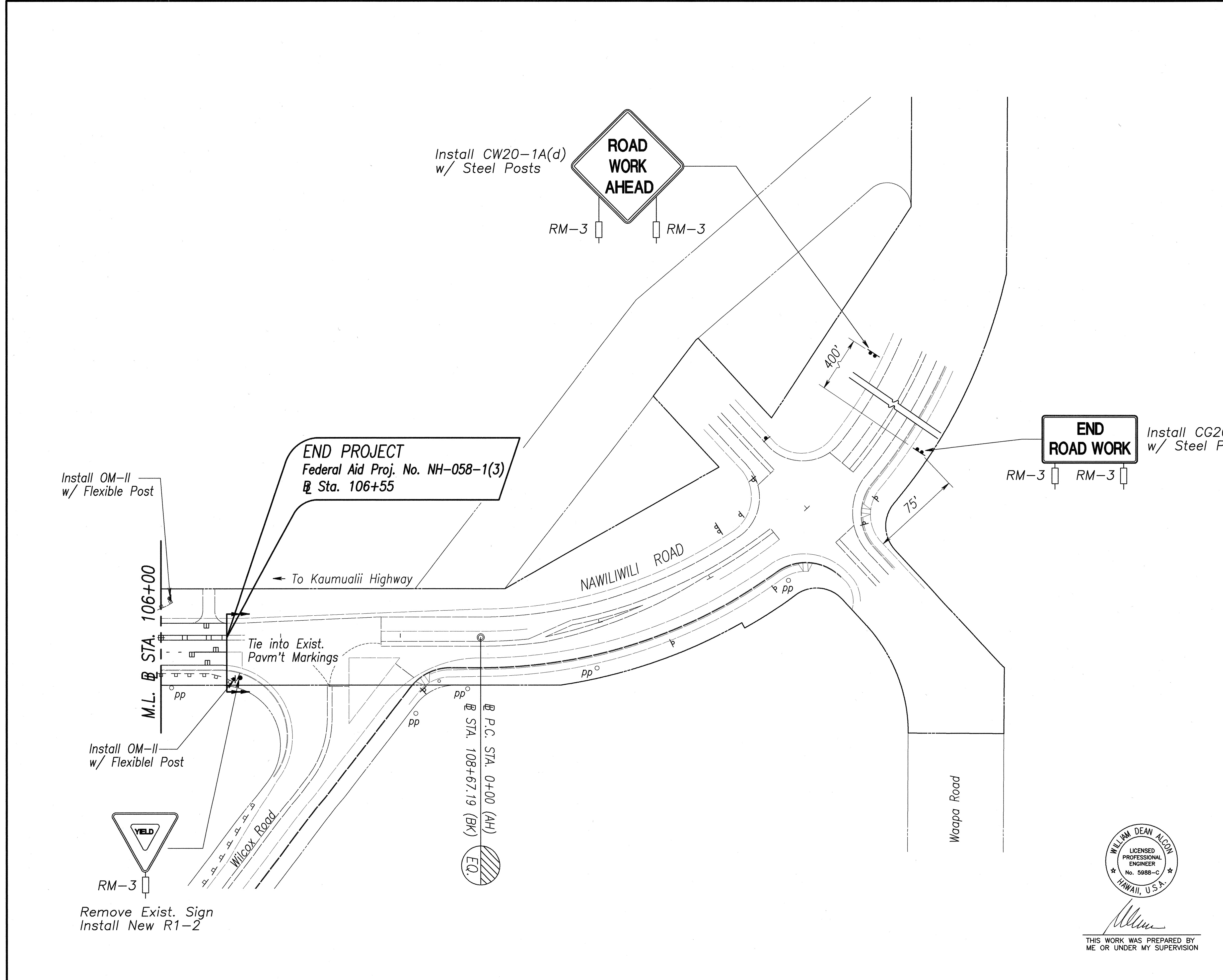
DATE	9-8-00
DESIGNED BY	H. B. ...
TRACED BY	...
NOTE BOOK	...
DESIGNED BY	S. ...
QUANTITIES BY	...
CHECKED BY	H. D. Alcon



THIS WORK WAS PREPARED BY ME OR UNDER MY SUPERVISION

STATE OF HAWAII
DEPARTMENT OF TRANSPORTATION
HIGHWAYS DIVISION
**PAVEMENT MARKING, STRIPING
& TRAFFIC SIGNING PLAN**
NAWILIWILI ROAD RESURFACING
Kaunualii Highway to Waapa Road
Federal Aid Proj. No. NH-058-1(3)
Scale: 1" = 40' Date: Nov. 2000

FED. ROAD DIST. NO.	STATE	FED. AID PROJ. NO.	FISCAL YEAR	SHEET NO.	TOTAL SHEETS
HAWAII	HAW.	NH-058-1(3)	2001	35	39



TRUE NORTH
SCALE: 1" = 40'

DATE	9-28-00
SURVEY PLOTTED BY	J. E. B. / J. E. B.
DRAWN BY	J. E. B.
TRACED BY	S. H.
DESIGNED BY	S. H.
QUANTITIES BY	S. H.
CHECKED BY	J. E. B.
ORIGINAL PLAN	AG/mh/ep/08.dwg

WILLIAM DEAN ALCON
LICENSED PROFESSIONAL ENGINEER
No. 5988-C
HAWAII, U.S.A.
William Dean Alcon
THIS WORK WAS PREPARED BY ME OR UNDER MY SUPERVISION

STATE OF HAWAII
DEPARTMENT OF TRANSPORTATION
HIGHWAYS DIVISION
PAVEMENT MARKING, STRIPING & TRAFFIC SIGNING PLAN
NAWILIWILI ROAD RESURFACING
Kaunualii Highway to Waapa Road
Federal Aid Proj. No. NH-058-1(3)
Scale: 1" = 40' Date: Nov. 2000
SHEET No. 8 OF 8 SHEETS