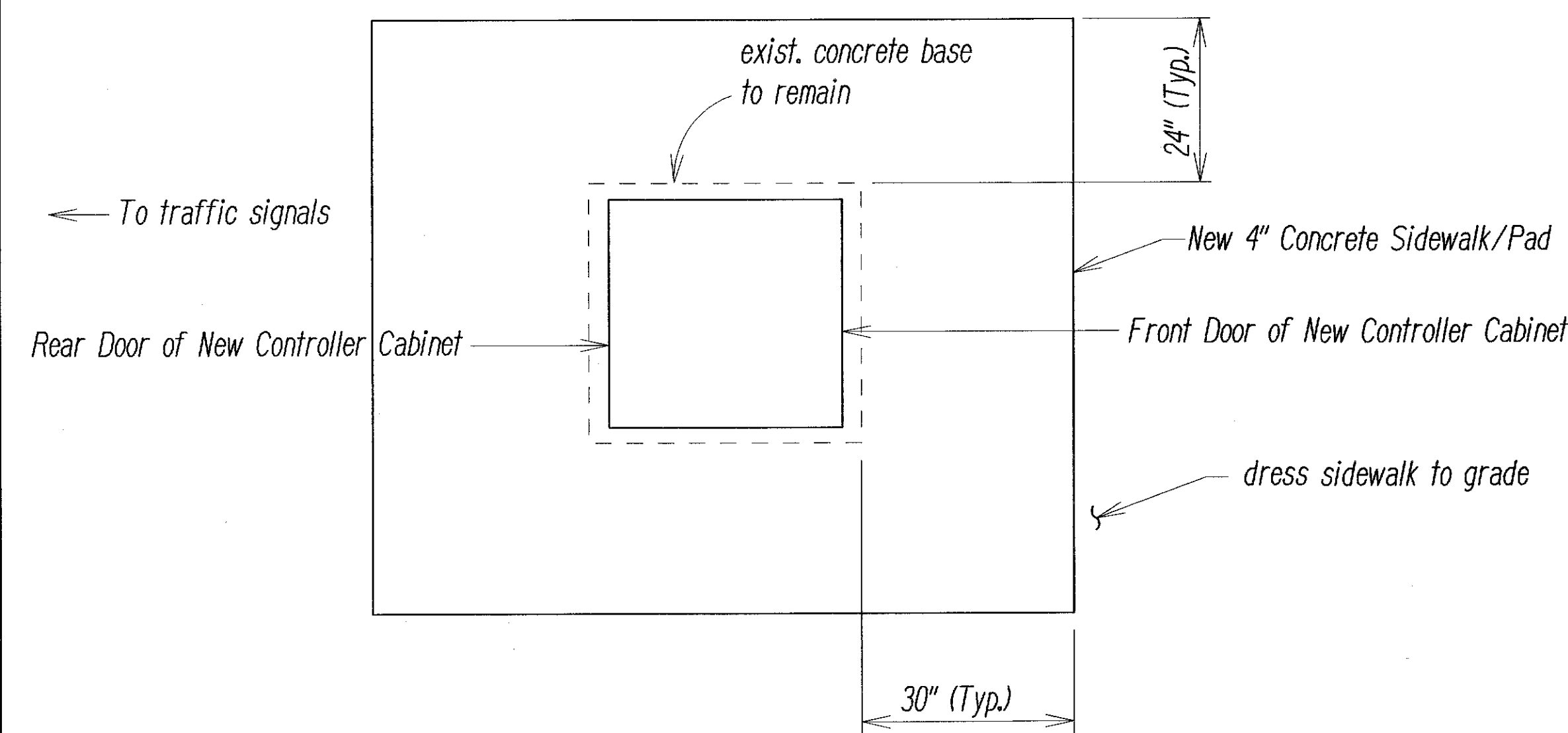
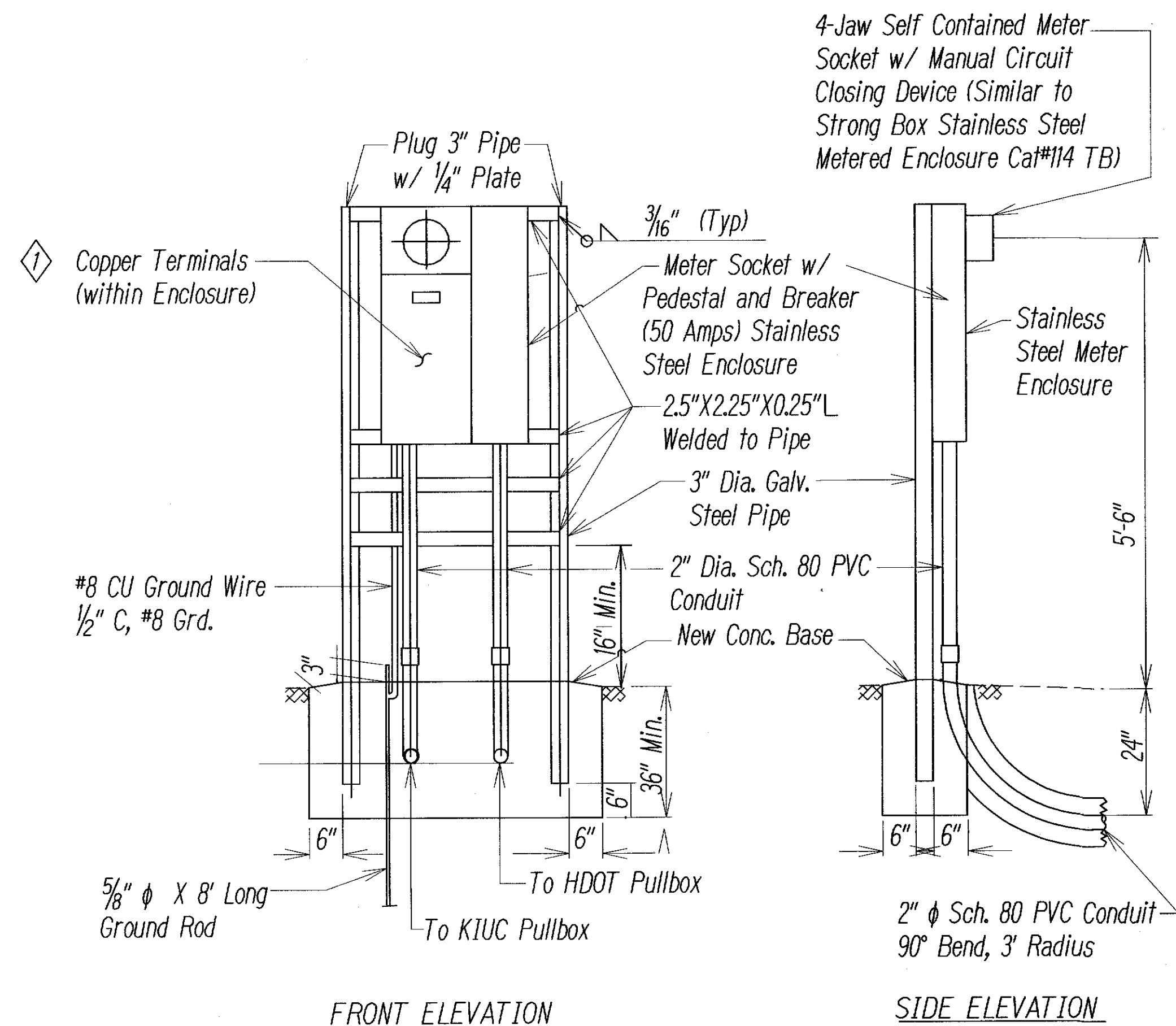


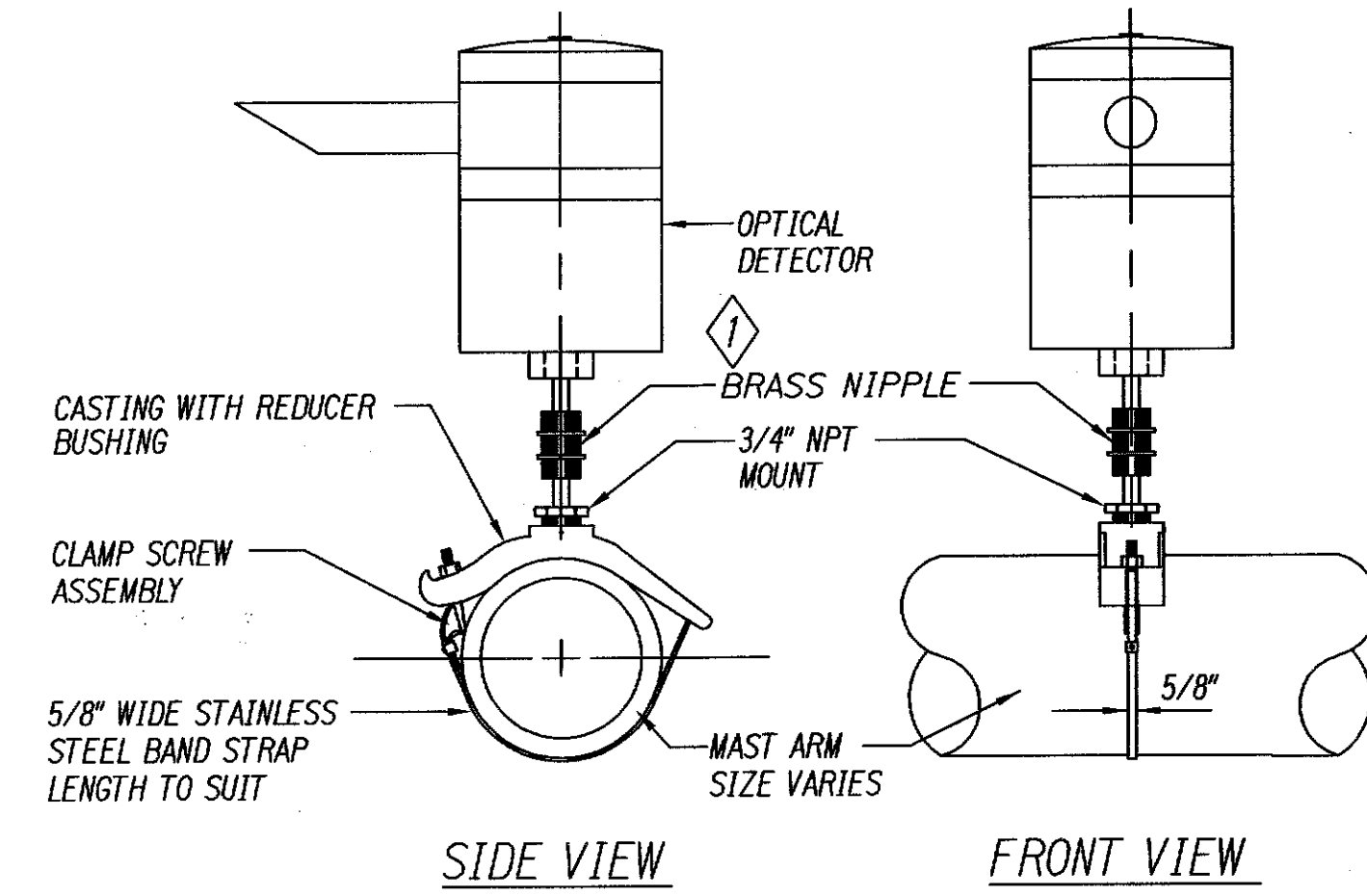
FED. ROAD DIST. NO.	STATE	PROJ. NO.	FISCAL YEAR	SHEET NO.	TOTAL SHEETS
HAWAII	HAW.	HWY-K-01-13M	2013	ADD.7	18



PLAN
NEW CONCRETE PAD AT CONTROLLER CABINET
Not to Scale

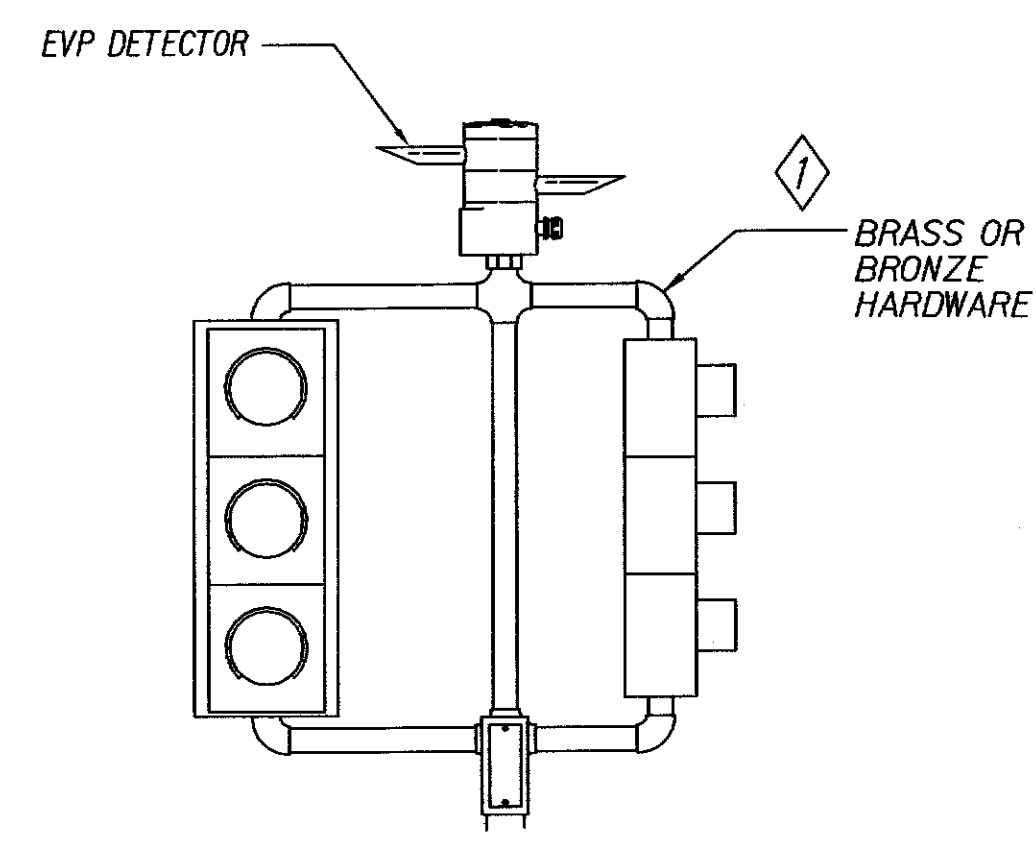


FRONT ELEVATION
SIDE ELEVATION
METER PEDESTAL FOR UNDERGROUND SERVICE
Not to Scale

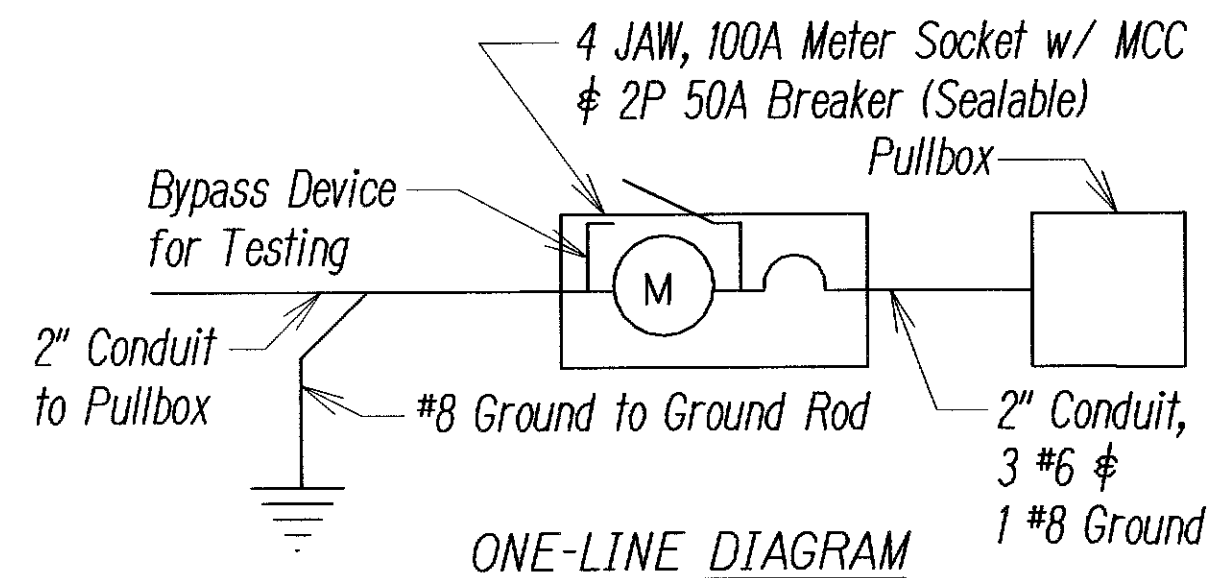


- NOTES:
1. OPTICAL DETECTOR SHALL BE "OPTICOM M711 OPTICAL DETECTOR", OR APPROVED EQUAL, UNLESS NOTED OTHERWISE IN THE SPECIAL PROVISIONS.
 2. SUPPORT SADDLE ASSEMBLY SHALL BE "ASTRO MINI-BRAC, AB-0132-29", OR APPROVED EQUAL, UNLESS NOTED OTHERWISE IN THE SPECIAL PROVISIONS.

OPTICAL DETECTOR FOR
MAST ARM MOUNTING
NOT TO SCALE



POST TOP TP-EVP MOUNTING
NOT TO SCALE



- Service Data
1. Service Voltage: 1 Phase, 3 Wire 120/240 V
 2. Load Data: Connected - 5 KVA, Estimated Demand - 2 KVA

- TRAFFIC SIGNAL LEGEND
- Remove and Install New Traffic Signal Head Mounted on Existing Type II Signal Standard
 - Remove and Install New 12" RYG Standard Traffic Signal Head
 - New Replacement Traffic Signal Heads Mounted on Type II Signal Standard, Arm Spread Shown 26' and Distance Between Signal Heads shown is 12'
 - Remove and Install New 12" RYG $\leftarrow Y/G$ Traffic Signal Bi-Modal LED Head for Left Turn
 - Remove and Install New 12" RY \uparrow Traffic Signal Head
 - Remove and Install New EVP Detector (Opticom)
 - Existing Pullbox to remain
 - Remove Existing, and Install New Type "A" Traffic Pullbox
 - Remove Existing, and Install New Type "B" Traffic Pullbox
 - Remove Existing, and Install New Type "C" Traffic Pullbox
 - Remove Existing, and Install New Controller and Cabinet on Existing Concrete Base
 - Existing Loop Detectors to remain

- NOTES:
1. Pedestal shall be new, hot-dipped galvanized after fabrication.
 2. All fastening bolts, nuts, and washers shall be new, stainless steel.
 3. Concrete base for meter pedestal shall be new. Remove portions of conduits, re-route to new pedestal with new conduit splices. Remove and demolish old pedestal and concrete base, backfill and compact immediately following removal.
 4. Provide 4 feet minimum clearance in front of meter.
 5. Install new pull box in the same location and on the same day as removal of old pull box.
 6. Contractor shall notify KIUC at least 5 days in advance to schedule disconnect/reconnect of meter socket. Please call 246-4334 to schedule work.
 7. All signal head mountings shall be brass or bronze.
 8. Remove existing, and replace with new pullboxes shall be performed at Locations 1 through 4 only (refer to Title Sheet 1 through 8, except as noted).

6/14/13	①	Revised Notes.
	①	Added Notes 7 and 8.
	①	Added Call-outs to Details.
DATE	REVISION	

STATE OF HAWAII DEPARTMENT OF TRANSPORTATION HIGHWAYS DIVISION	
<u>TRAFFIC SIGNAL LEGEND & DETAILS</u>	
<u>KUHIO HIGHWAY</u>	
<u>Traffic Signal Rehabilitation</u>	
<u>at Various Locations</u>	
<u>Project No. HWY-K-01-13M</u>	
Scale: Not to Scale	Date: May, 2013
SHEET No. 1 OF 1 SHEETS	

ORIGINAL PLAN	DATE
DESIGNED BY	
TRACED BY	
NOTE BOOK	
QUANTITIES BY	
CHECKED BY	

Paul P. P. P.
Distribution Engineer, Kauai Island Utility Cooperative
Date: 5/24/13

"AS-BUILT"

ADD.7