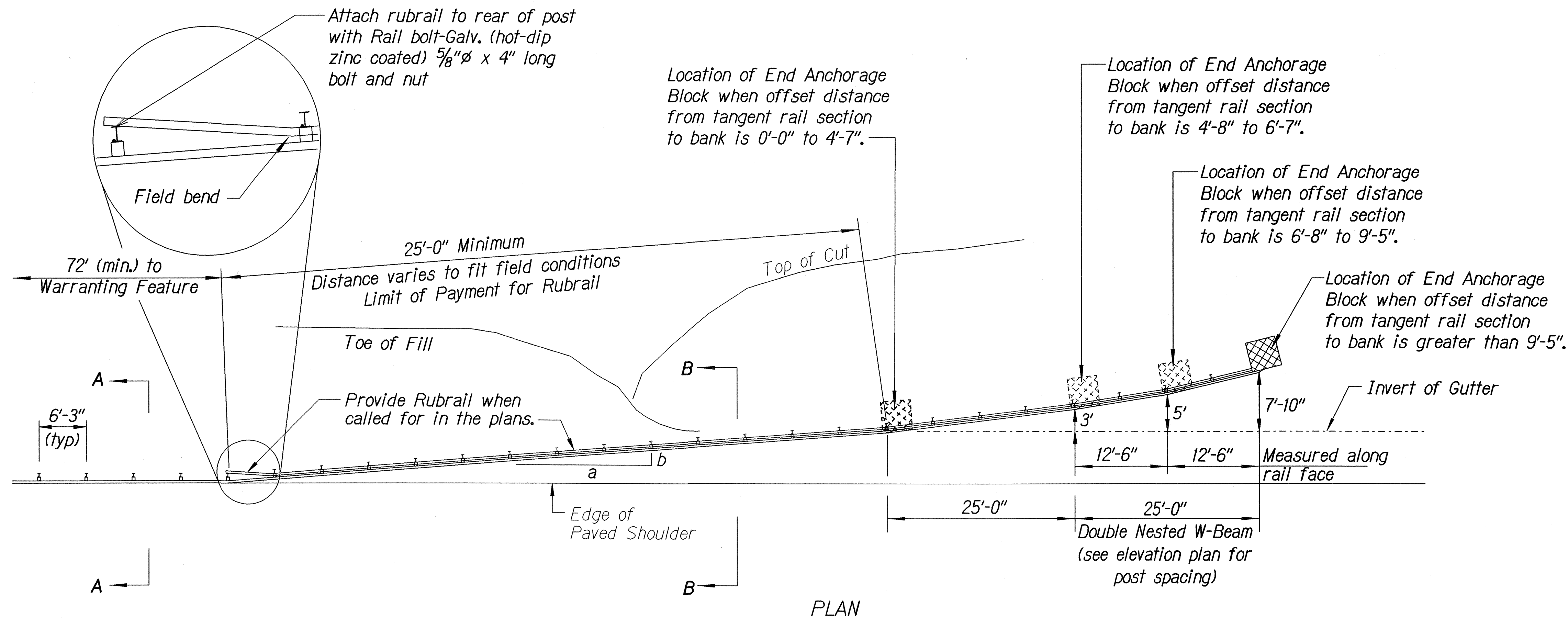
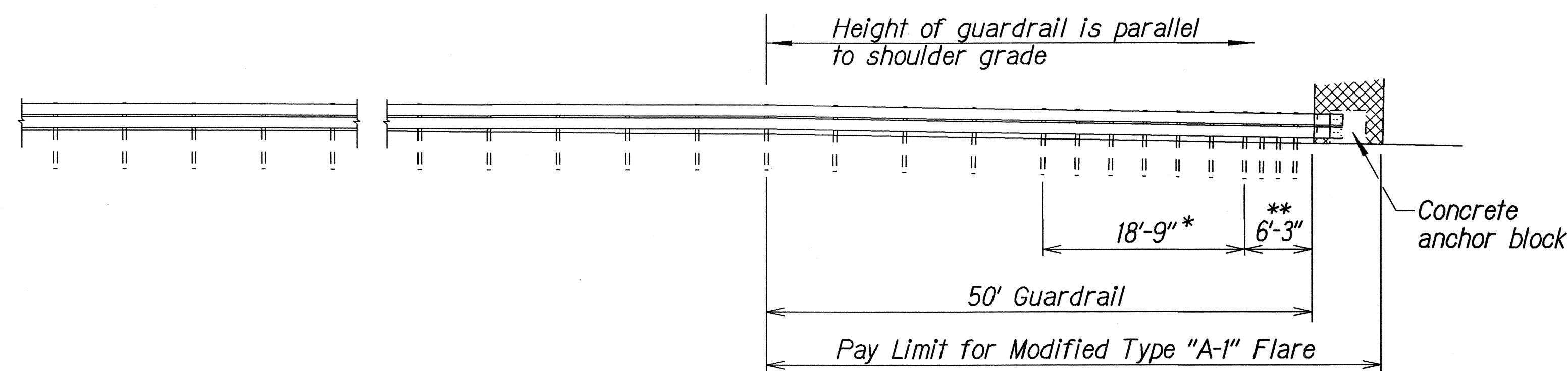


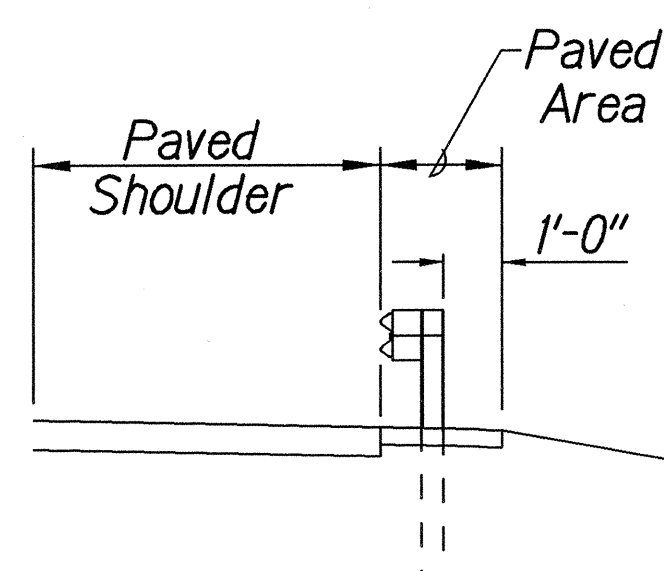
FED. ROAD DIST. NO.	STATE	FED. AID PROJ. NO.	FISCAL YEAR	SHEET NO.	TOTAL SHEETS
HAWAII	HAW.	STP-056-1(49)	2006	22	31



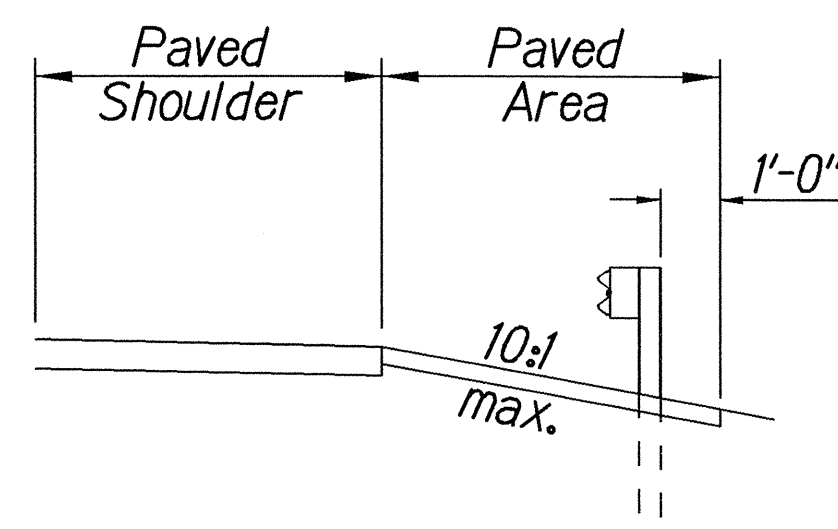
Design speed mph	a:b
68	15:1
62	13:1
56	12:1
50	11:1
43	10:1
37	9:1
31	7:1



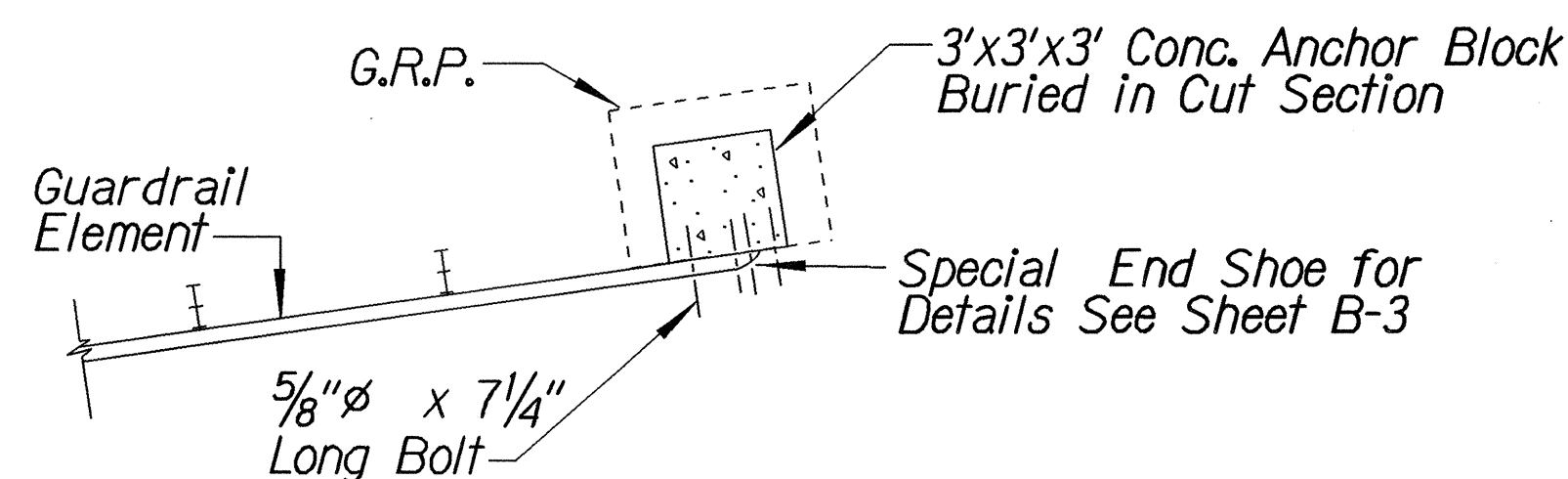
ELEVATION (Profile Along Rail)



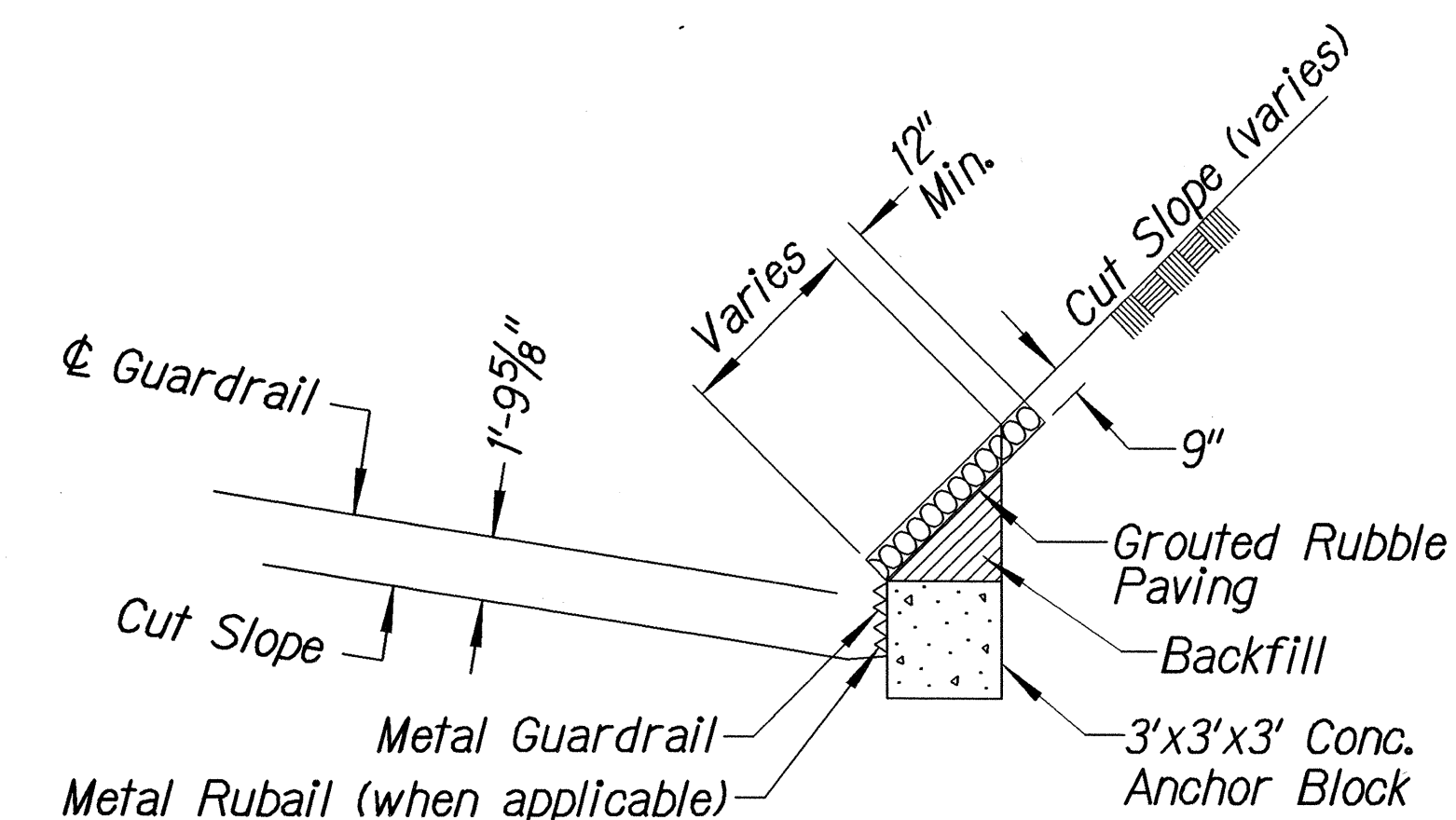
Section A-A



Section B-B



PLAN - ANCHOR BLOCK IN CUT SECTION



ANCHOR BLOCK IN CUT SECTION

General Notes

- All posts are 6'-0" in length within the 50'-0" pay limit for the Modified Type "A-1" Flare without rubrail.
- Whenever swales or a change in grade is encountered within the 50'-0" pay limit for the Modified Type "A-1" Flare, a rubrail shall be installed and all posts shall have a minimum embedment of 4'-0". Post lengths shall be adjusted to provide the minimum embedment.
- All fasteners, posts, blocks and rail elements shall conform to the latest edition and amendments of "A Guide to Standardized Highway Barrier Rail Hardware", a report prepared and approved by the AASHTO-AGCARTBA Joint Cooperative Committee and HDOT's Statewide Guideline for Permanent Highway Safety Hardware.
- Limit of payment for Modified Type "A-1" Flare shall be 50'-0" from End Shoe including Rubrail (when applicable), Anchor Block and GRP work.
- Excavation, Anchor Block, Backfill and GRP work shall be considered incidental to the Modified Type "A-1" Flare.

STATE OF HAWAII

DEPARTMENT OF TRANSPORTATION

HIGHWAYS DIVISION

MODIFIED TYPE "A-1" FLARE

KUHIO HIGHWAY

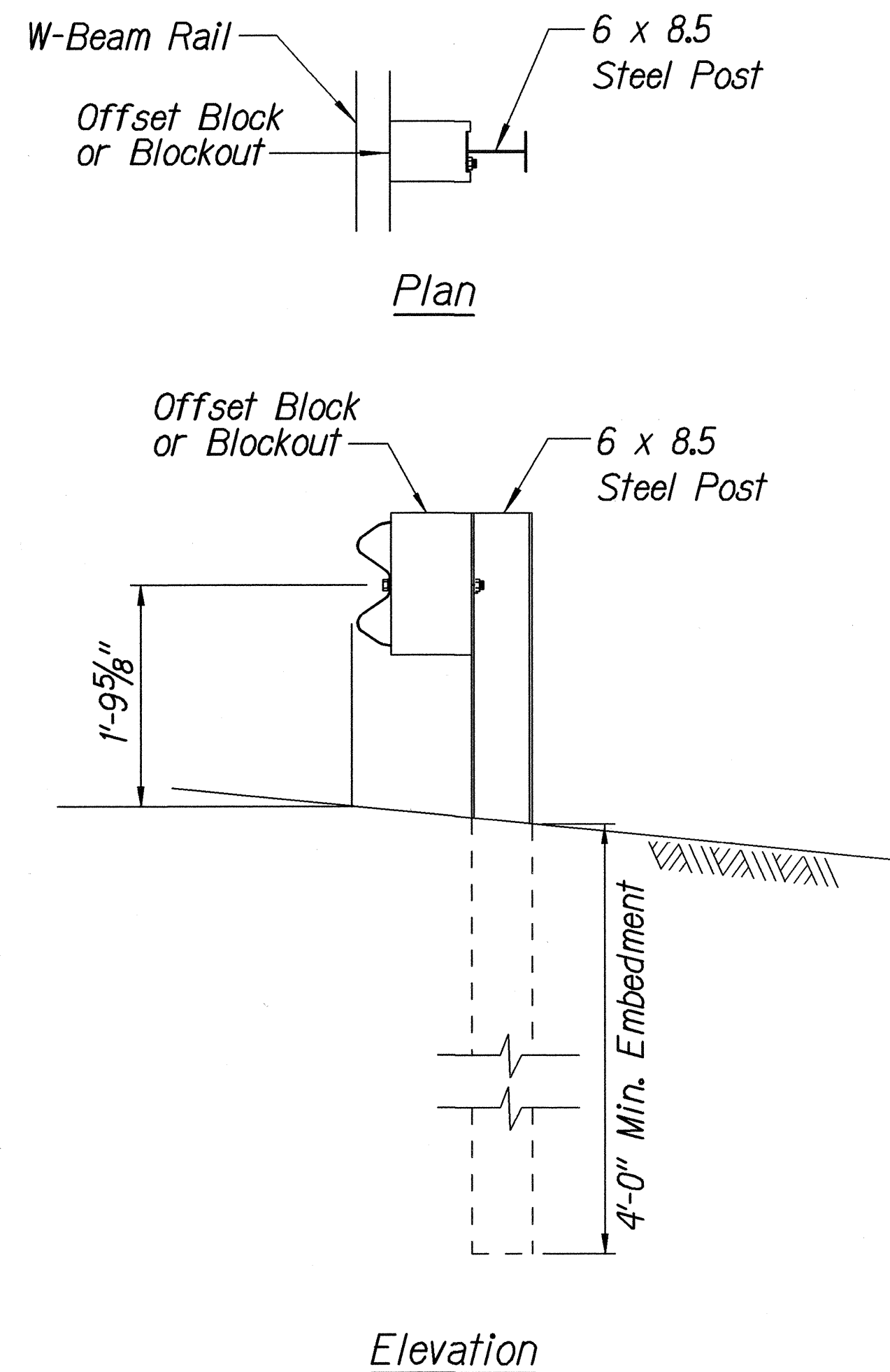
Guardrail and Shoulder Improvements at Various Locations

Fed. Aid Project No. STP-056-1(49)

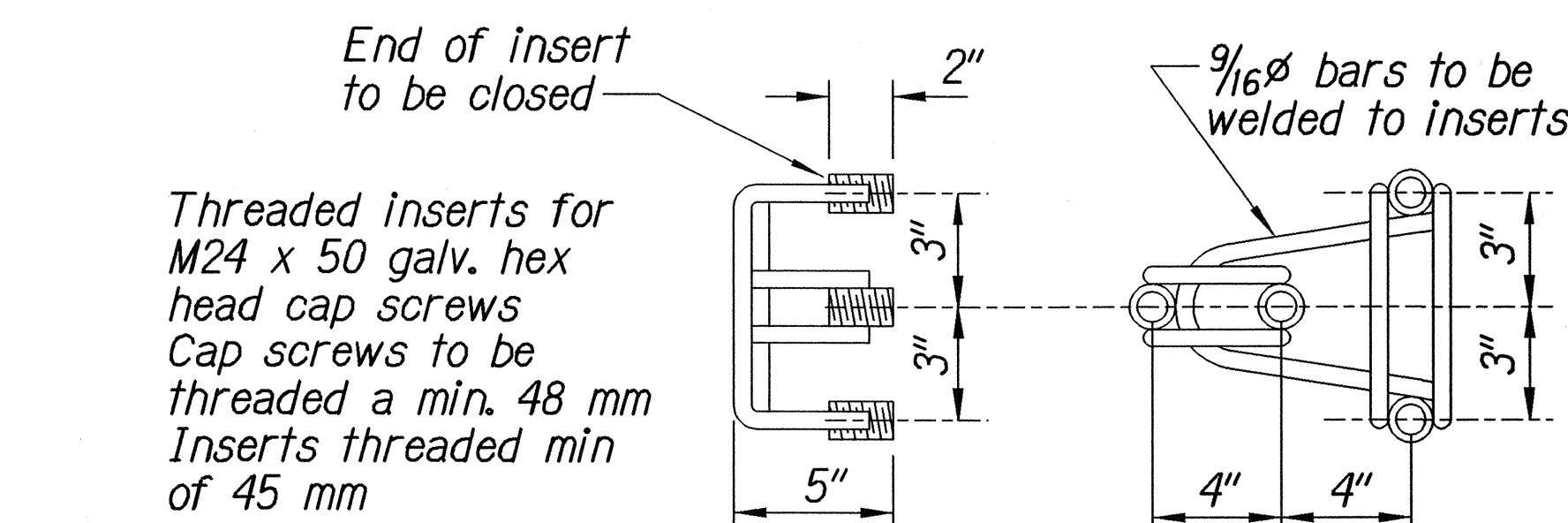
Scale: Not to Scale

Date: Oct. 2005

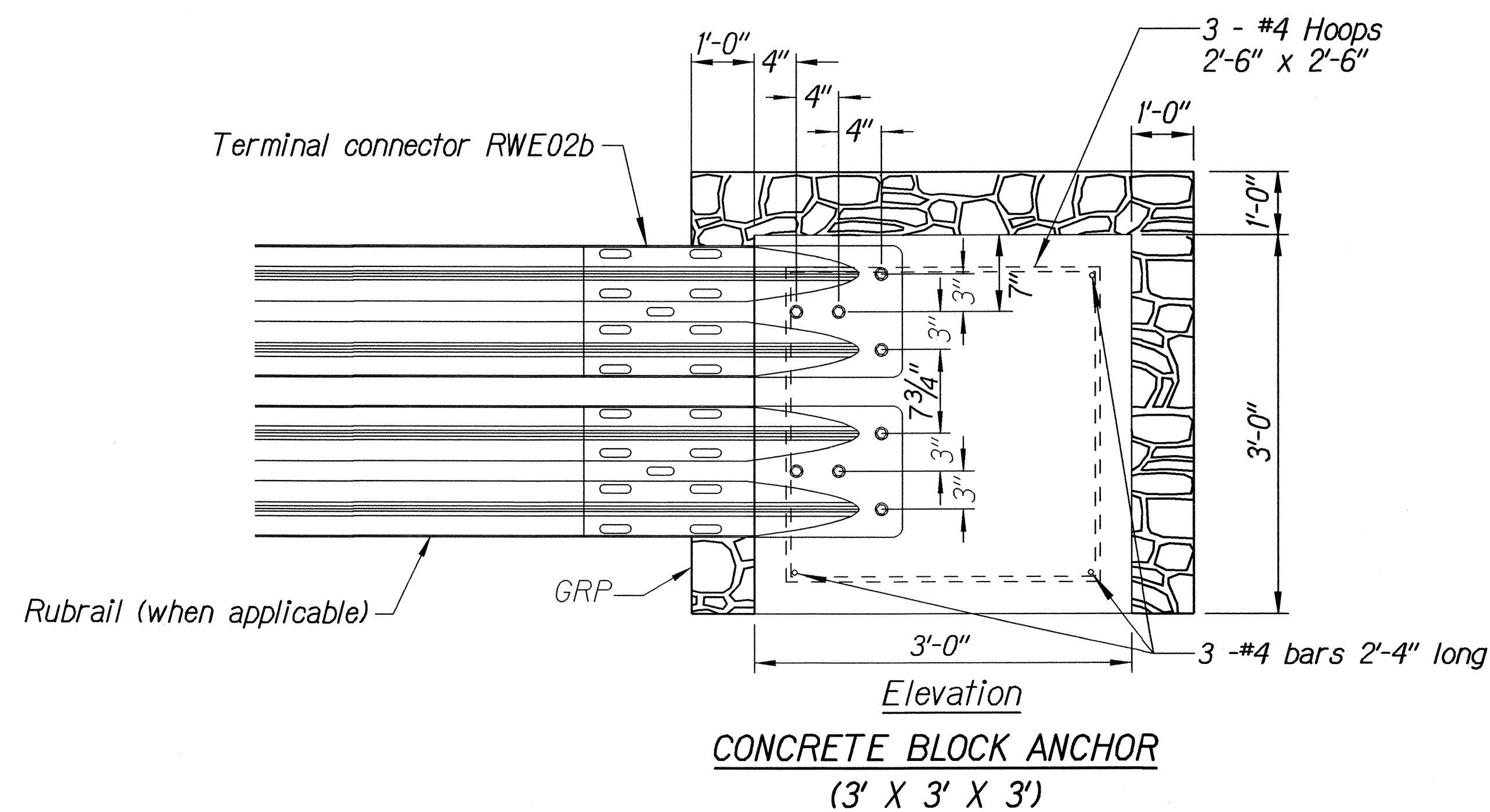
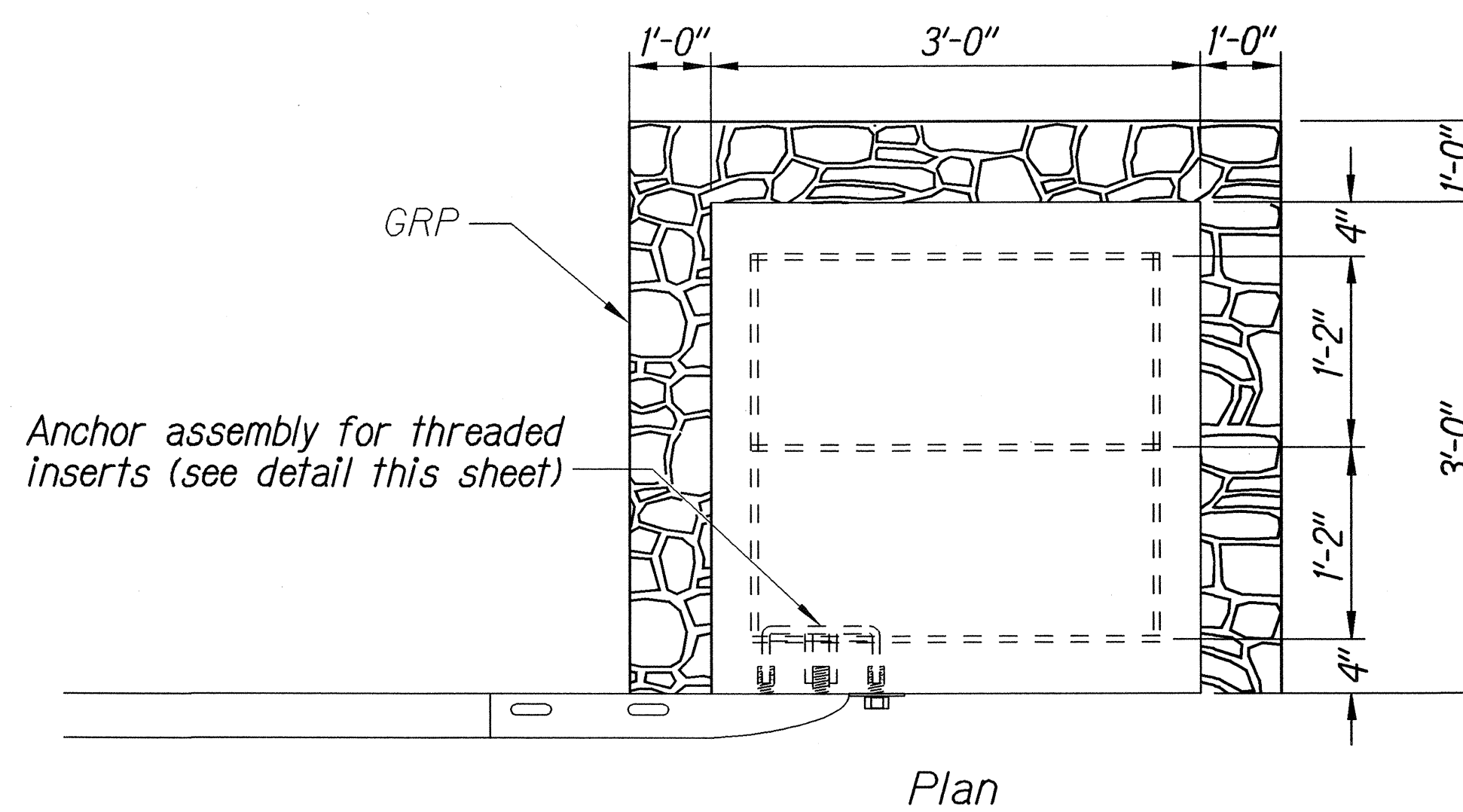
FED. ROAD DIST. NO.	STATE	FED. AID PROJ. NO.	FISCAL YEAR	SHEET NO.	TOTAL SHEETS
HAWAII	HAW.	STP-056-1(49)	2006	23	31



STRONG POST W-BEAM GUARDRAIL



ANCHOR ASSEMBLY CONCRETE BLOCK ANCHOR



BACKSLOPE ANCHOR TERMINAL END ANCHORAGE DETAILS MODIFIED TYPE "A-1" FLARE

Note:

All fasteners, posts, blocks and rail elements shall conform to the latest edition and amendments of "A Guide to Standardized Highway Barrier Rail Hardware," a report prepared and approved by the AASHTO-AGCARTBA Joint Cooperative Committee and HDOT's Statewide Guideline for Permanent Highway Safety Hardware.

SURVEY PLOTTED BY	DATE
DRAWN BY	
DESIGNED BY	
NOTED BY	
CHECKED BY	

STATE OF HAWAII DEPARTMENT OF TRANSPORTATION HIGHWAYS DIVISION
MODIFIED TYPE "A-1" FLARE
KUHIO HIGHWAY Guardrail and Shoulder Improvements at Various Locations Fed. Aid Project No. STP-056-1(49)
Scale: Not to Scale Date: Oct. 2005
SHEET No. 4 OF 6 SHEETS