

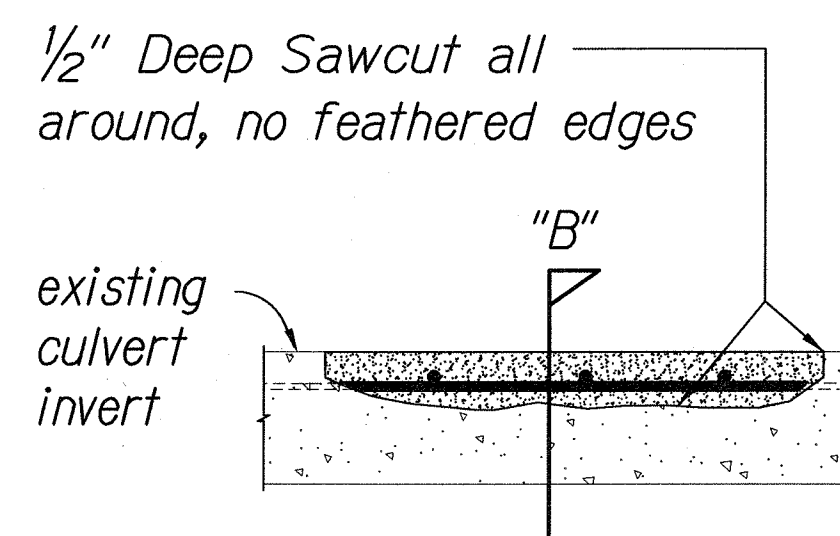
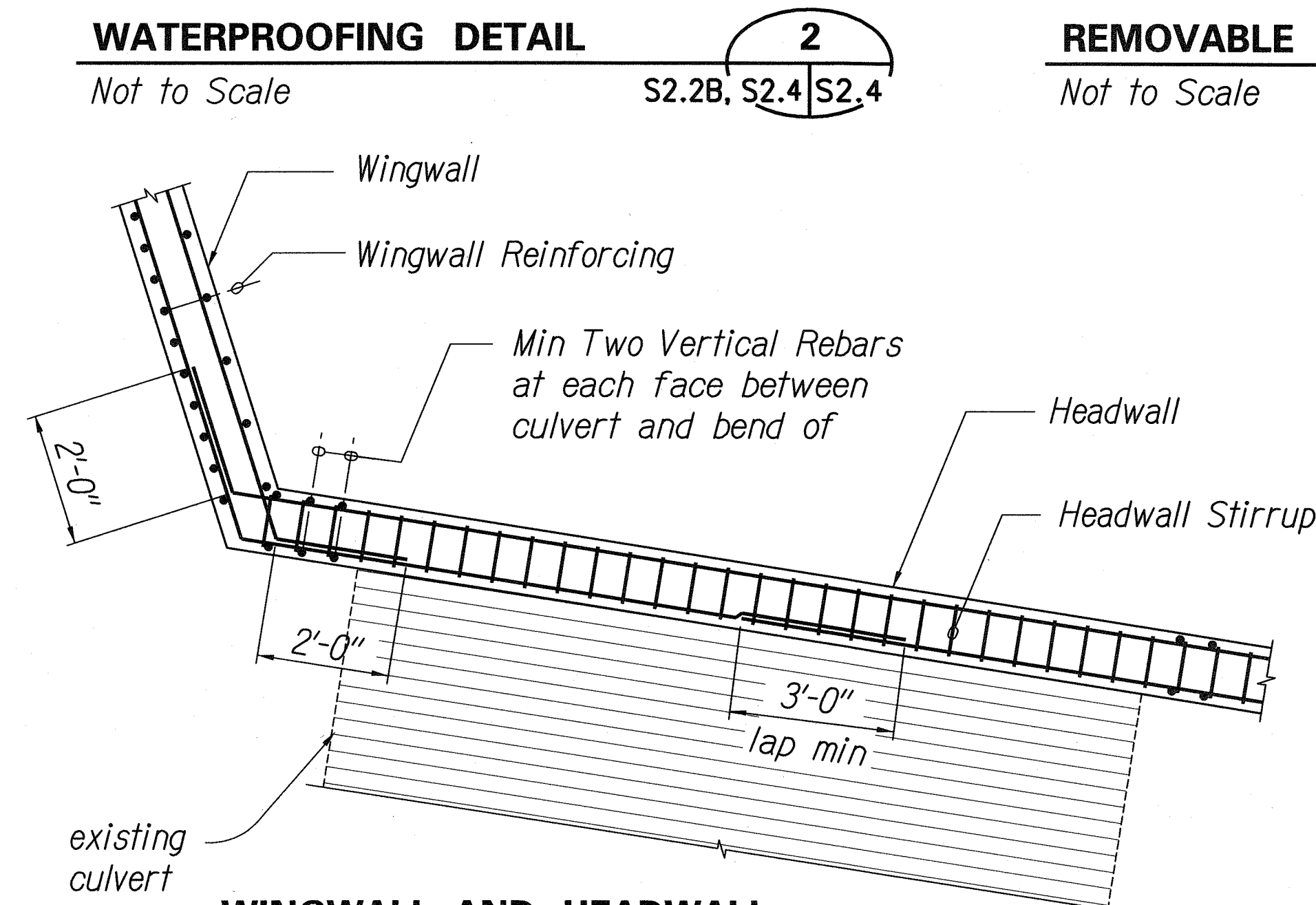
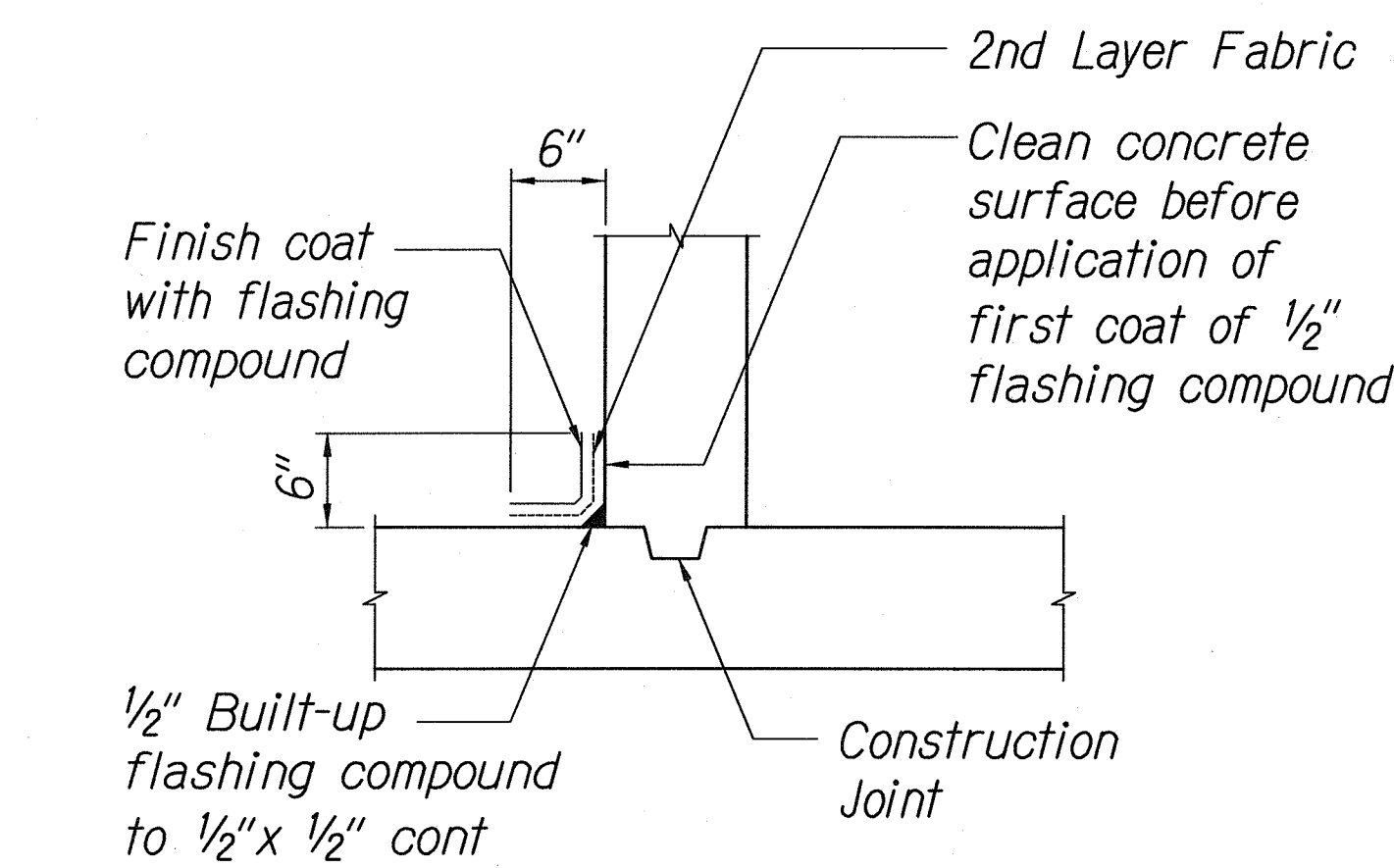
Type I Spall Repair Notes

1. Clean and prepare concrete according to the Surface Preparation Notes.
2. Substrate shall be saturated surface dry (SSD) with no standing water.
3. Apply corrosion inhibiting bonding agent to all surfaces to be patched.
4. Apply polymer modified patching mortar to repair areas to original finish lines, or until a minimum of 1 1/2" of cover over reinforcing steel is obtained.

SPALL DETAIL TYPE II

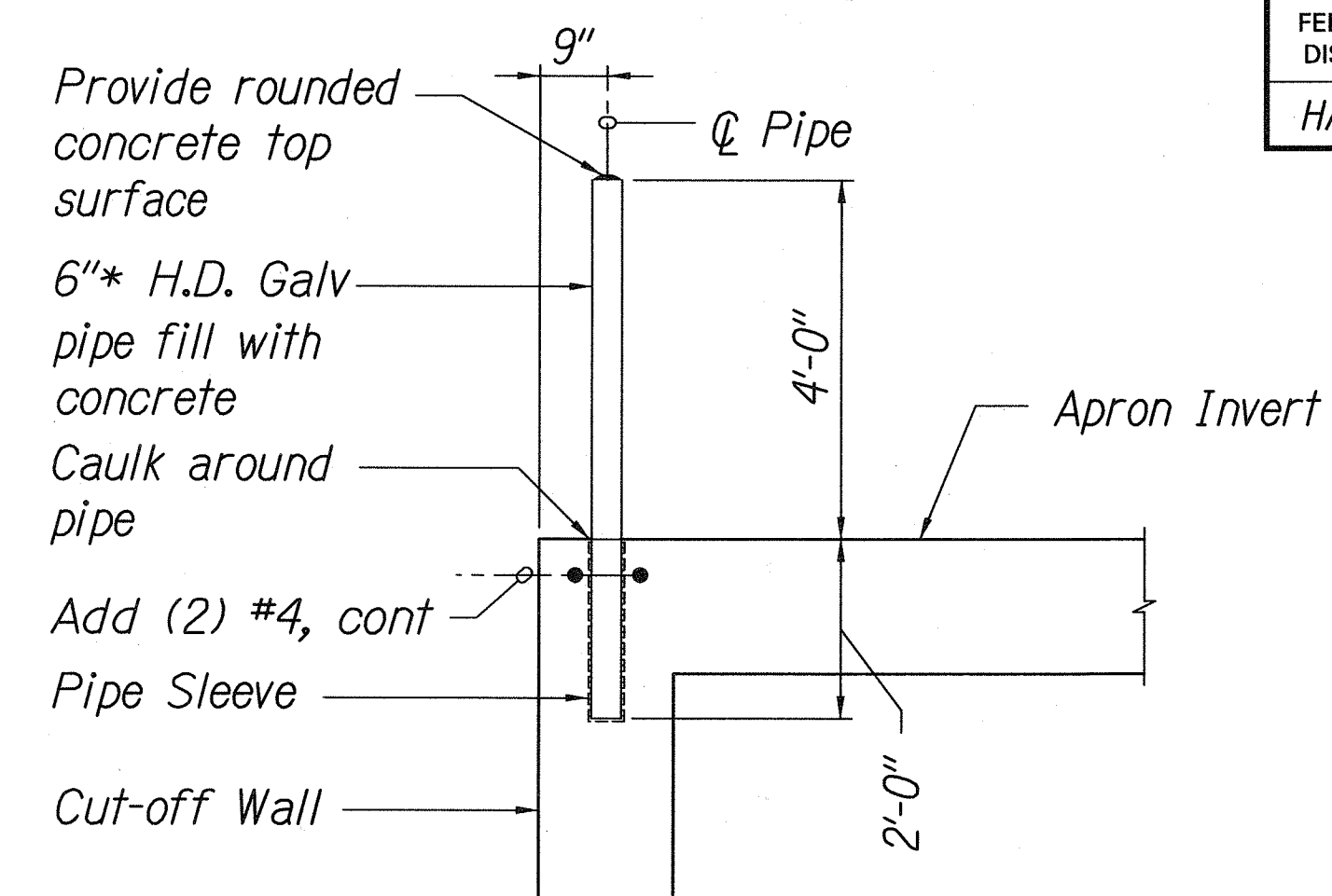
CULVERT INVERT SPALL REPAIR DETAILS

Not to Scale



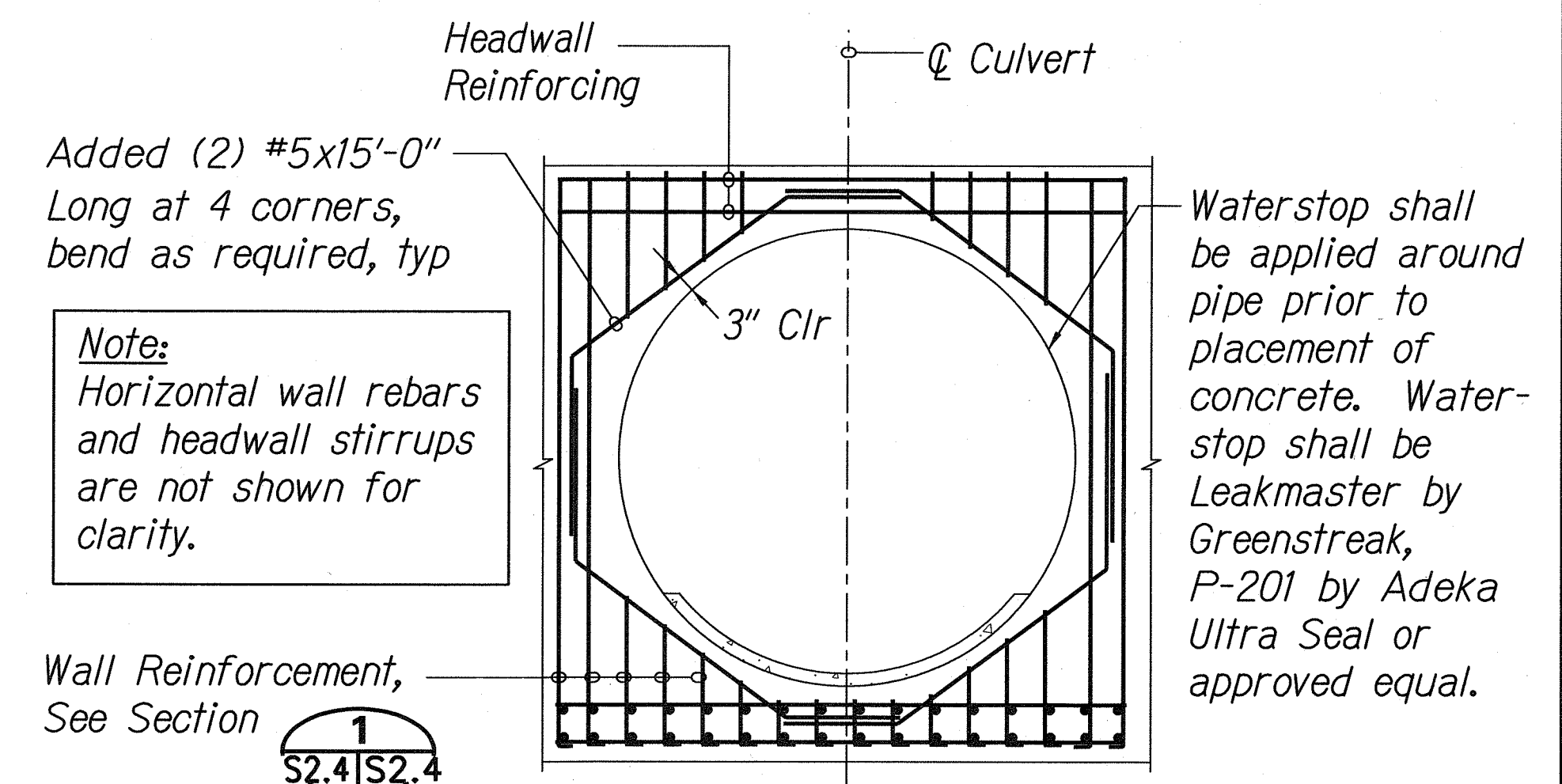
Type II Spall Repair Notes:

1. Clean and prepare concrete according to the Surface Preparation Notes.
2. Clean any exposed reinforcement by sand-blasting or with a wire brush, removing all corrosion, oil, dirt corrosion, oil, dirt and all other bond-inhibiting agents.
3. Splice corroded rebars with more than 25% section loss according to rebar splice detail, Sht. S1.2.



Notes:

1. 6" Pipe: Extra Strong
O.D.= 6.625"
I.D.= 5.761"
Pipe Sleeve: Extra Strong
O.D.= 8.625"
I.D.= 7.625"
2. Refer to Specification Section 712 for caulking requirements.



LEGEND FOR AS-BUILT POSTINGS

| | |
|---------|-------------------------------------|
| | Squiggly line for as-built deletion |
| | Double line for as-built deletion |
| Roadway | Text for as-built posting |

PLAN SECTION B

Type II Spall Repair Notes (Cont):

4. Substrate shall be saturated surface dry (SSD) with no standing water.
5. Apply corrosion inhibiting bonding agent to all surfaces to be patched, including reinforcing steel.
6. Apply polymer modified patching mortar to repair areas to original finish lines, or until a minimum of 1 1/2" of cover over reinforcing steel is obtained.

| | |
|--|---------------------------------|
| 4/26/06 | Revised Sheet and Added Details |
| Date | Revision |
| STATE OF HAWAII DEPARTMENT OF TRANSPORTATION HIGHWAYS DIVISION | |
| SECTIONS AND DETAILS | |
| Kuhio Highway Emergency Repairs Vicinity of MP 21.7 (Waiala Stream) FEDERAL AID PROJECT NO. ER-14(1) | |
| Scale: As shown | Date: April 2006 |
| SHEET No. S2.4 OF 34 SHEETS | |