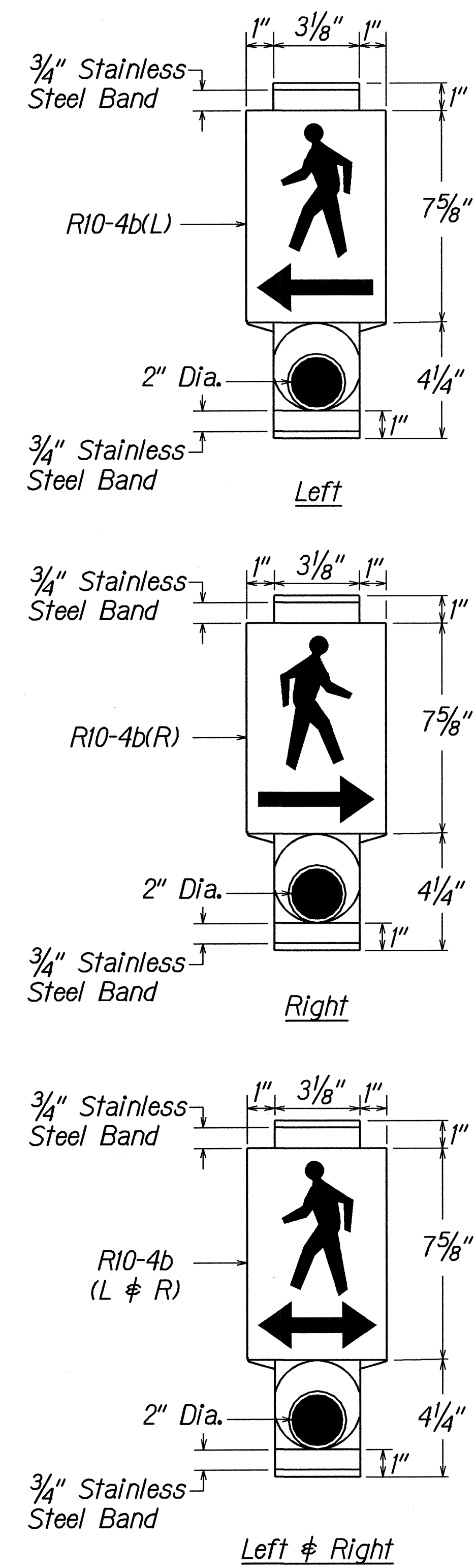


FED. ROAD DIST. NO.	STATE	PROJ. NO.	FISCAL YEAR	SHEET NO.	TOTAL SHEETS
HAWAII	HAW.	56A-01-04M	2005	21	48



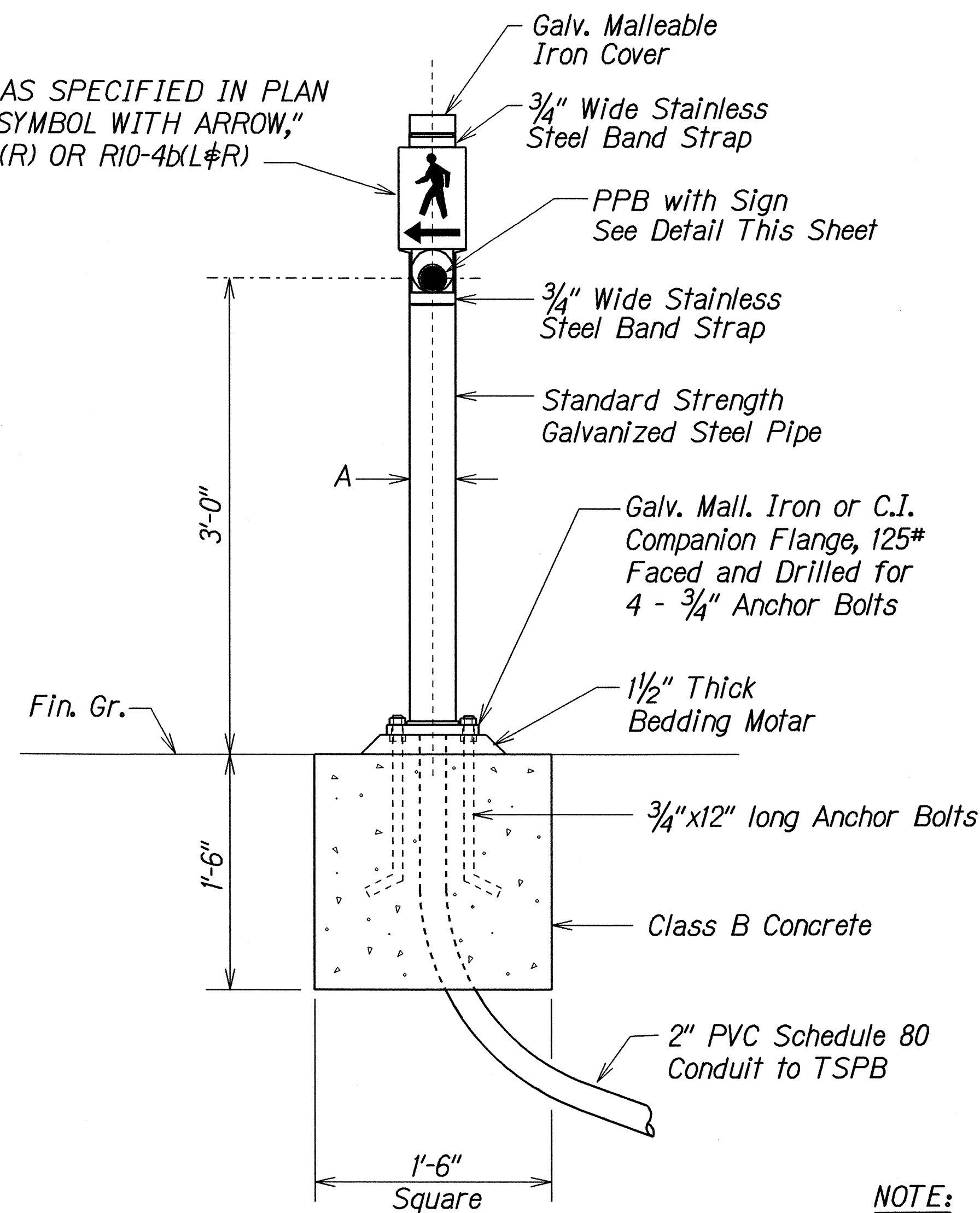
### PEDESTRIAN PUSH BUTTON WITH SIGN

Man, Arrow & Push Button - White  
Background - Black

#### NOTE:

There shall be a 30" x 48" level ground surface (2% max. cross slope, both directions) for a forward or side approach, as appropriate, to a pedestrian push button. Location of pedestrian push button shall be shown on Civil Plans in addition to Electrical Plans.

TRAFFIC SIGN AS SPECIFIED IN PLAN  
"WALKING MAN SYMBOL WITH ARROW,"  
R10-4b(L), R10-4b(R) OR R10-4b(L&R)

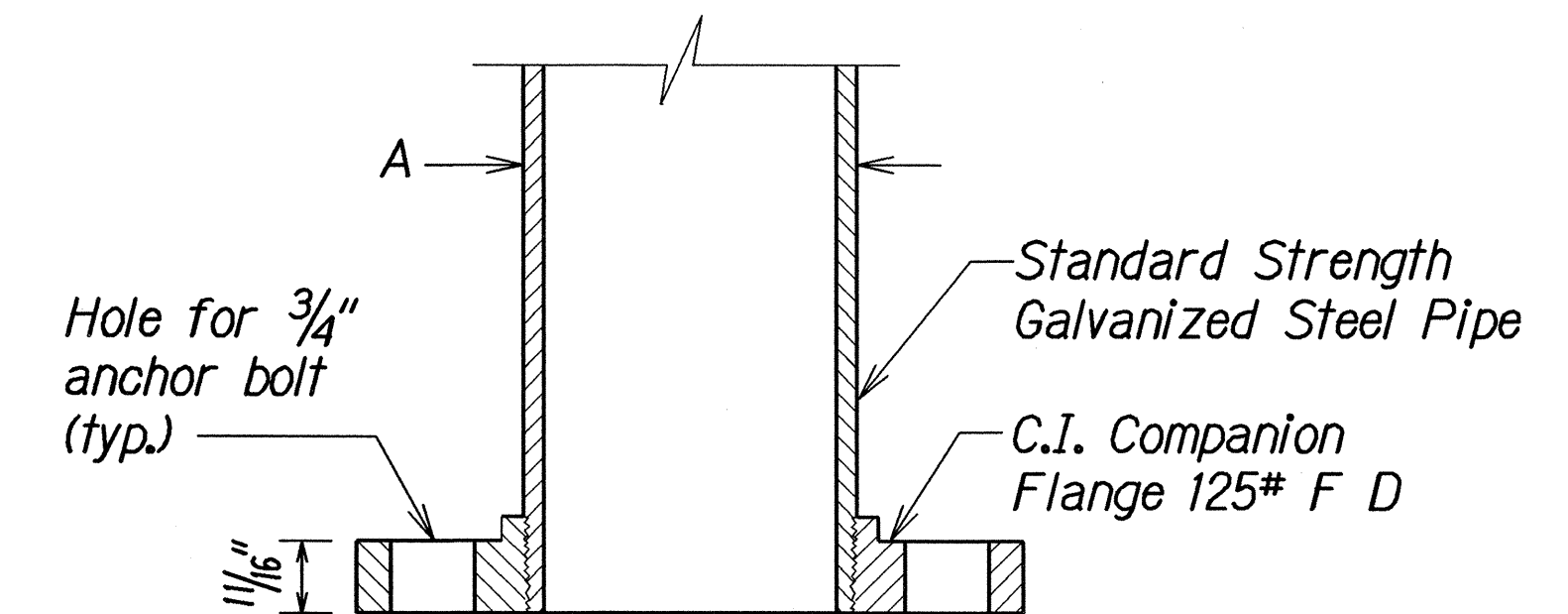


### PPB POST AND FOOTING DETAIL

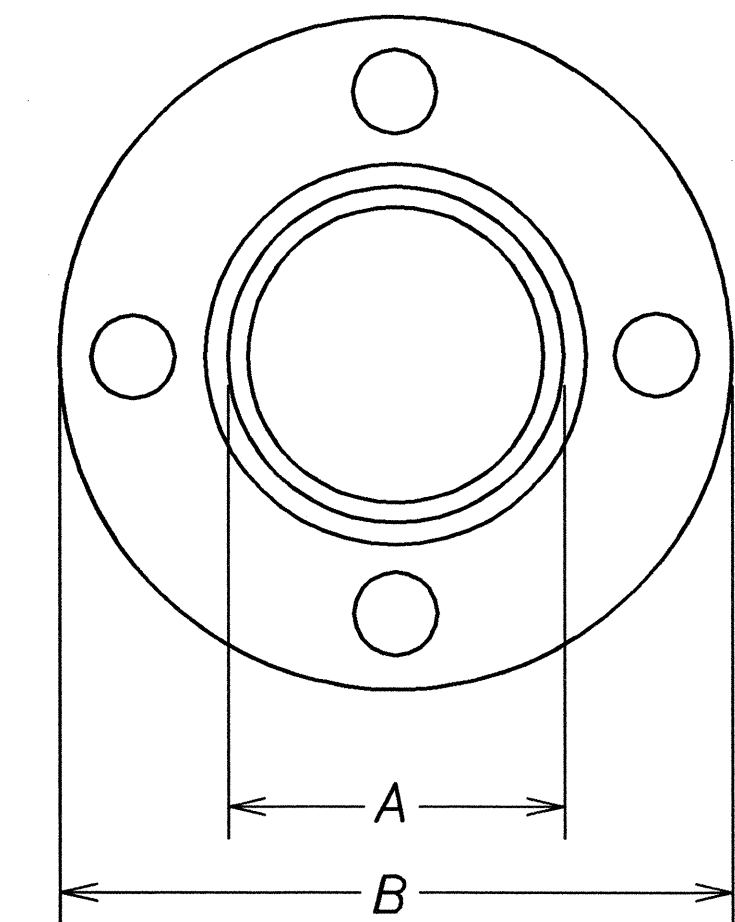
DATA TABLE FOR PPB POST		
AMOUNT OF PPB	DIMENSIONS	
	A	B
1	3 1/2"	8"
2-3	4 1/2"	9"

#### NOTE:

1. Conduits shall protrude 2" max. above finished surface of foundation.
2. Conduits shall slope away from post foundation.



### SECTION



### TOP VIEW

### FLANGE DETAIL

SURVEY PLOTTED BY	DATE
DRAWN BY	2/27/04
DESIGNED BY	
QUANTITIES BY	
CHECKED BY	
ORIGINAL PLAN	
NOTE BOOK	
REVISION	
NO.	

STATE OF HAWAII  
DEPARTMENT OF TRANSPORTATION  
HIGHWAYS DIVISION

**PEDESTRIAN PUSH BUTTON DETAILS**  
  
**KUHIO HIGHWAY RESURFACING**  
**Vicinity of Hanamaulu**  
**Project No. 56A-01-04M**  
  
Scale: Not to Scale      Date: June 2004  
SHEET No. 1 OF 1 SHEETS