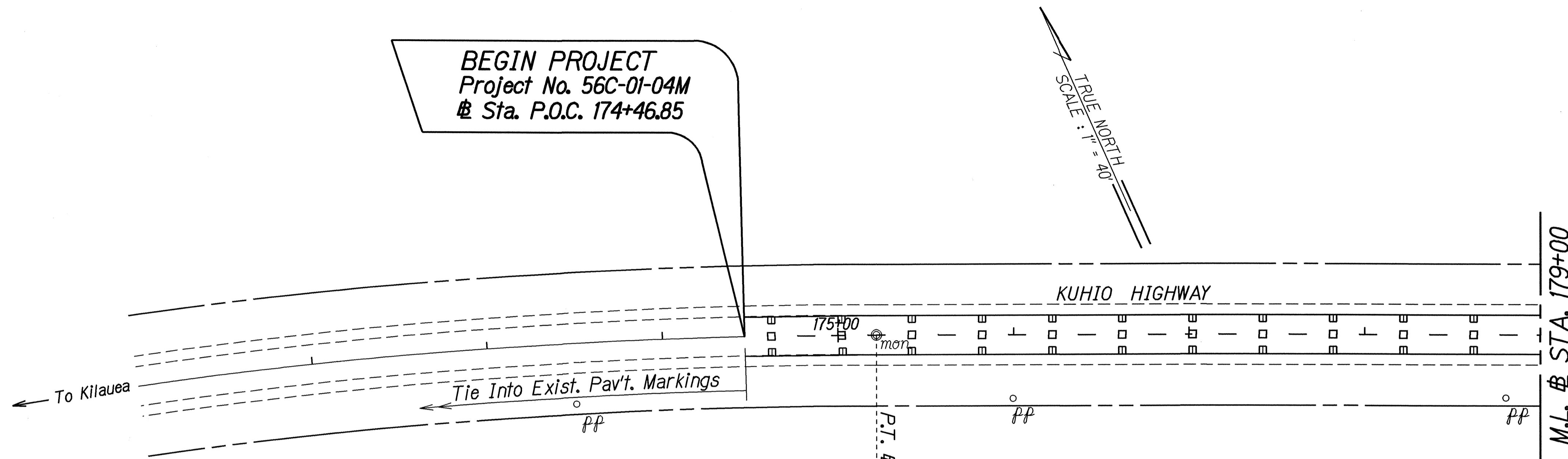
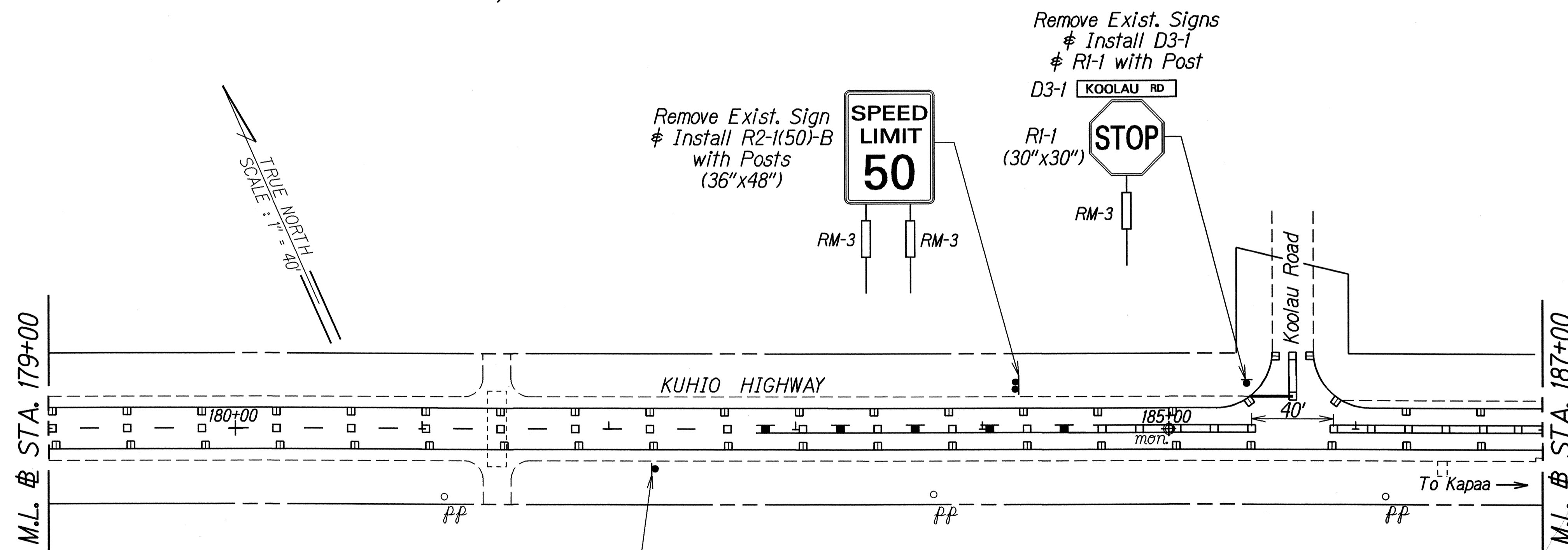


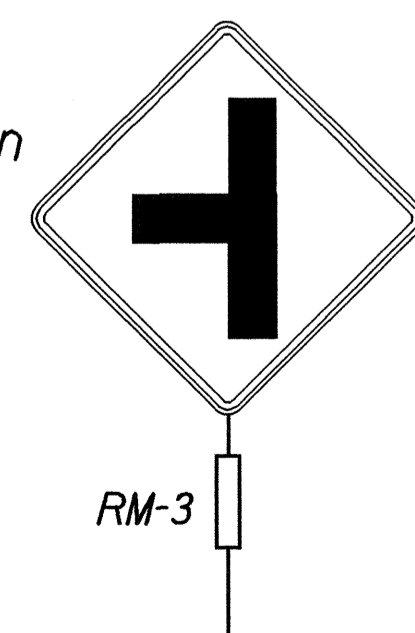
FED. ROAD DIST. NO.	STATE	PROJ. NO.	FISCAL YEAR	SHEET NO.	TOTAL SHEETS
HAWAII	HAW.	56C-01-04M	2005	17	19



CURVE DATA
 $\Delta = 39^{\circ}37'00''$
 $R = 3,000.00'$
 $T = 1,080.56'$
 $C = 2,033.25'$
 $Lc = 2,074.32'$



Remove Exist. Sign
Install W2-2L with Post (30"x30")



SURVEY PLOTTED BY	DATE
DRAWN BY	2/23/04
TRACED BY	
NOTE BOOK	
QUANTITIES BY	
CHECKED BY	
ORIGINAL PLAN	
NOTE BOOK	
QUANTITIES BY	
CHECKED BY	

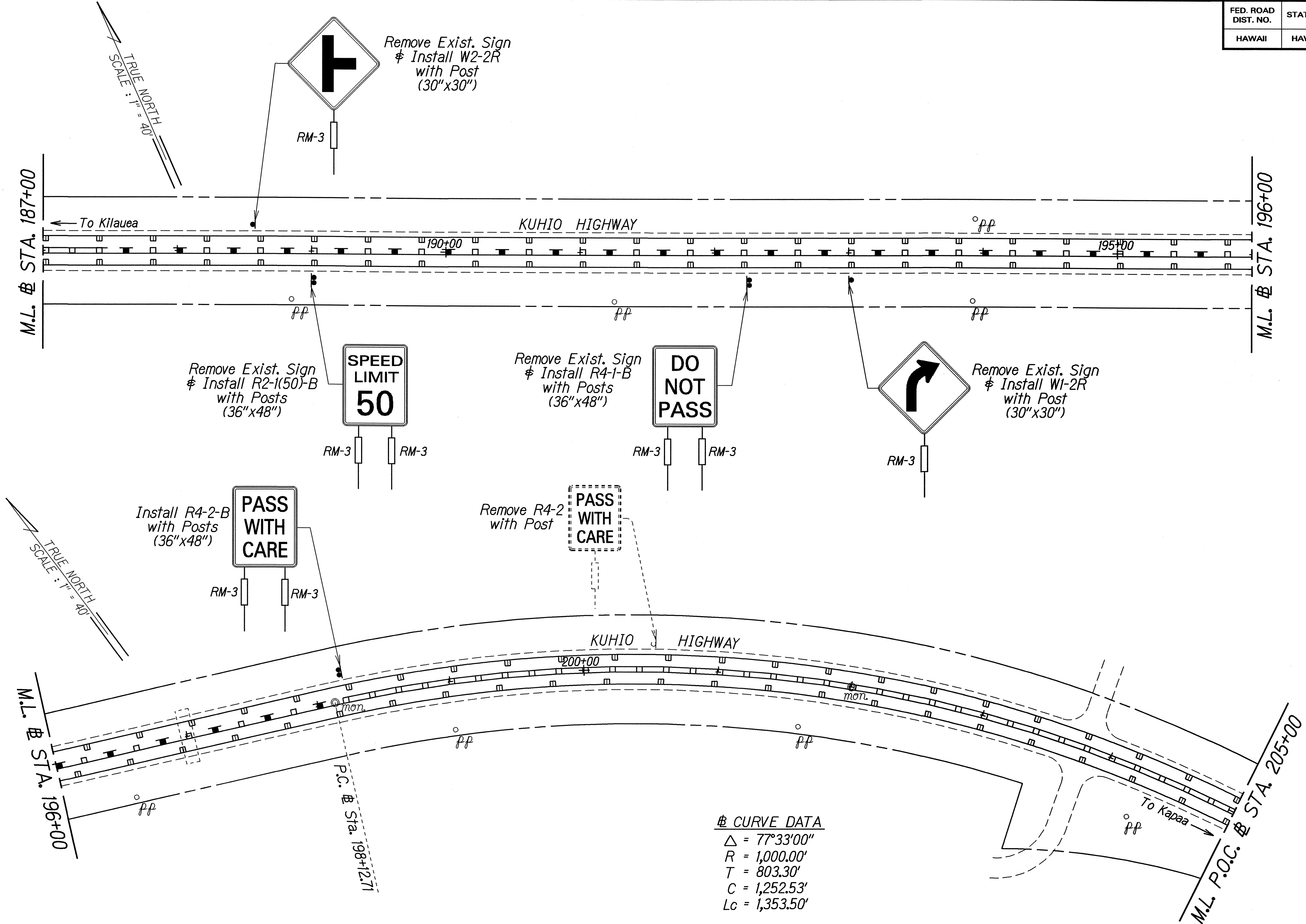
STATE OF HAWAII
DEPARTMENT OF TRANSPORTATION
HIGHWAYS DIVISION

PAVEMENT MARKING
TRAFFIC SIGNING PLAN

KUHIO HIGHWAY RESURFACING
Vicinity of Moloaa
Project No. 56C-01-04M

Scale: 1" = 40' Date: May 2005

FED. ROAD DIST. NO.	STATE	PROJ. NO.	FISCAL YEAR	SHEET NO.	TOTAL SHEETS
HAWAII	HAW.	56C-01-04M	2005	18	19



SURVEY PLOTTED BY	DATE
DESIGNED BY	2/22/02
QUANTITIES BY	
CHECKED BY	
ORIGINAL PLAN	
NOTE BOOK	
3/8/02/2/01	

STATE OF HAWAII
DEPARTMENT OF TRANSPORTATION
HIGHWAYS DIVISION

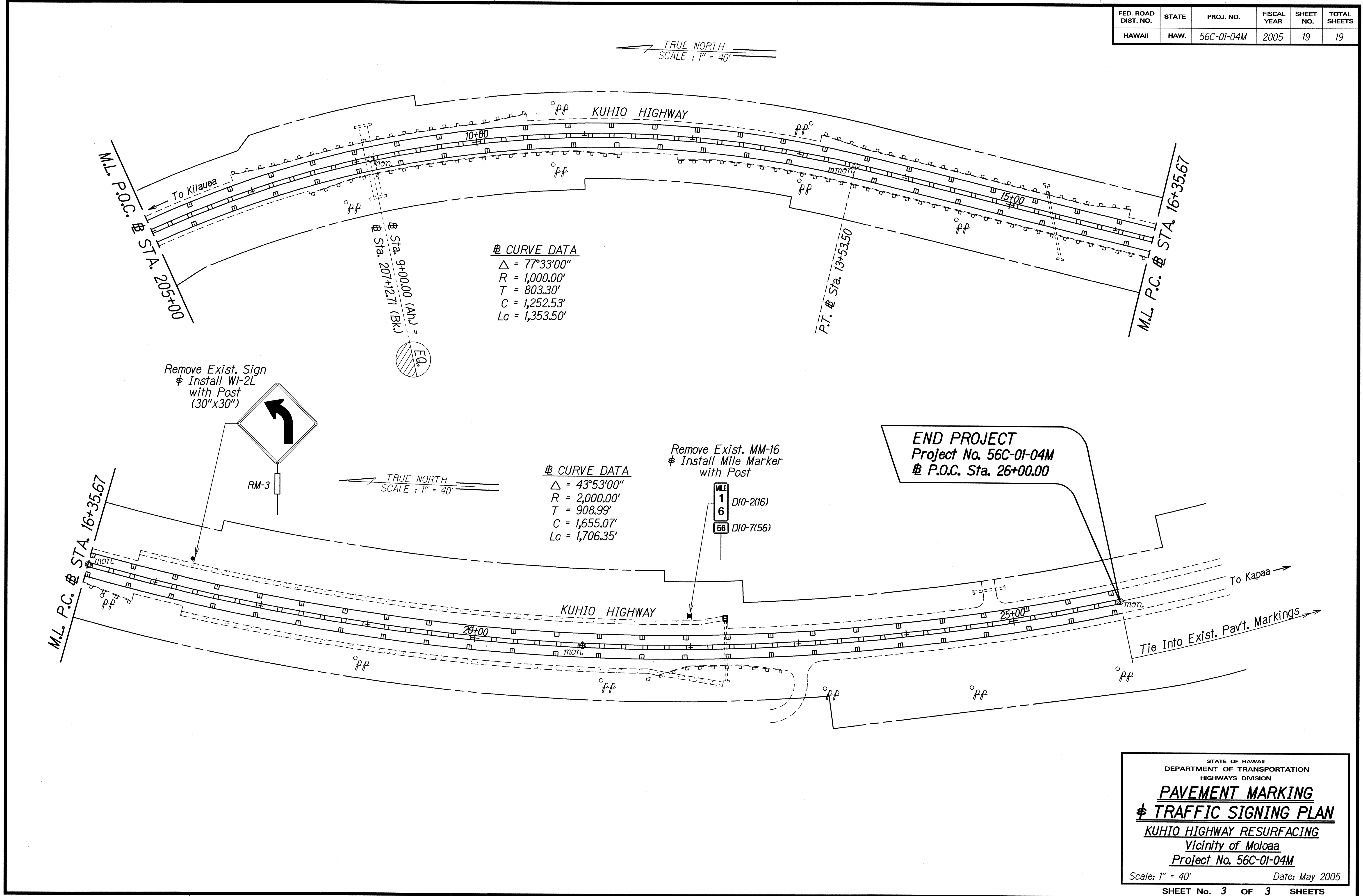
**PAVEMENT MARKING
& TRAFFIC SIGNING PLAN**

KUHIO HIGHWAY RESURFACING
Vicinity of Moloaa
Project No. 56C-01-04M

Scale: 1" = 40' Date: May 2005

SHEET No. 2 OF 3 SHEETS

FED. ROAD DIST. NO.	STATE	PROJ. NO.	FISCAL YEAR	SHEET NO.	TOTAL SHEETS
HAWAII	HAW.	56C-01-04M	2005	19	19



CURVE DATA
 $\Delta = 77^{\circ}33'00''$
 $R = 1,000.00'$
 $T = 803.30'$
 $C = 1,252.53'$
 $Lc = 1,353.50'$

CURVE DATA
 $\Delta = 43^{\circ}53'00''$
 $R = 2,000.00'$
 $T = 908.99'$
 $C = 1,655.07'$
 $Lc = 1,706.35'$

SURVEY PLOTTED BY	DATE
DRAWN BY	
TRACED BY	
NOTE BOOK	
QUANTITIES BY	
CHECKED BY	

STATE OF HAWAII
DEPARTMENT OF TRANSPORTATION
HIGHWAYS DIVISION

PAVEMENT MARKING
TRAFFIC SIGNING PLAN

KUHIO HIGHWAY RESURFACING
Vicinity of Moloaa
Project No. 56C-01-04M

Scale: 1" = 40' Date: May 2005

SHEET No. 3 OF 3 SHEETS