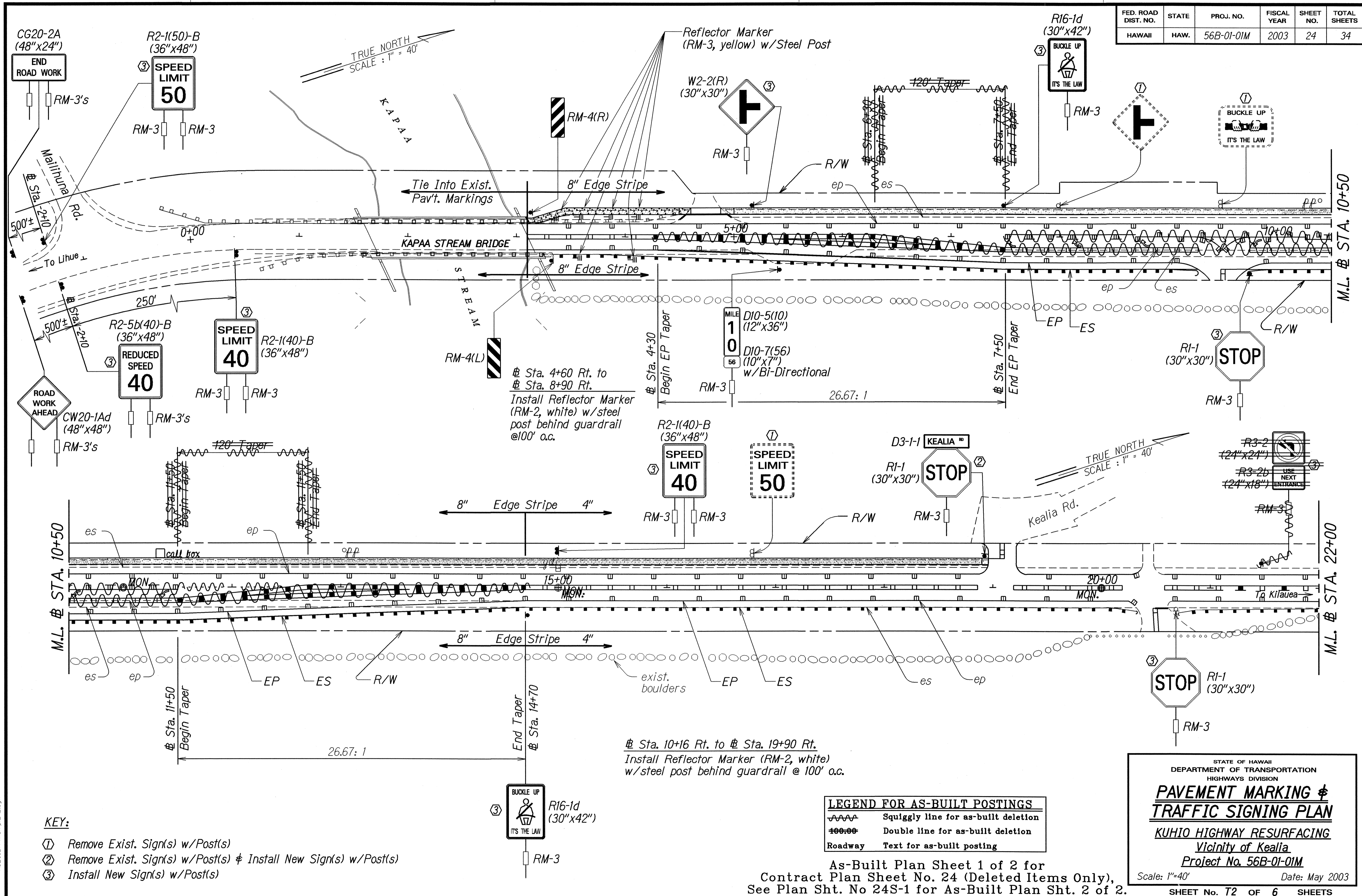


FED. ROAD DIST. NO.	STATE	PROJ. NO.	FISCAL YEAR	SHEET NO.	TOTAL SHEETS
HAWAII	HAW.	56B-01-01M	2003	24	34



SURVEY PLOTTED BY	DATE
DESIGNED BY	
QUANTITIES BY	
CHECKED BY	

- KEY:**
- ① Remove Exist. Sign(s) w/Post(s)
  - ② Remove Exist. Sign(s) w/Post(s) & Install New Sign(s) w/Post(s)
  - ③ Install New Sign(s) w/Post(s)

**LEGEND FOR AS-BUILT POSTINGS**

	Squiggly line for as-built deletion
	Double line for as-built deletion
	Text for as-built posting

STATE OF HAWAII  
DEPARTMENT OF TRANSPORTATION  
HIGHWAYS DIVISION

**PAVEMENT MARKING &  
TRAFFIC SIGNING PLAN**

**KUHIO HIGHWAY RESURFACING**  
Vicinity of Kealia  
Project No. 56B-01-01M

Scale: 1"=40' Date: May 2003

SHEET No. 72 OF 6 SHEETS

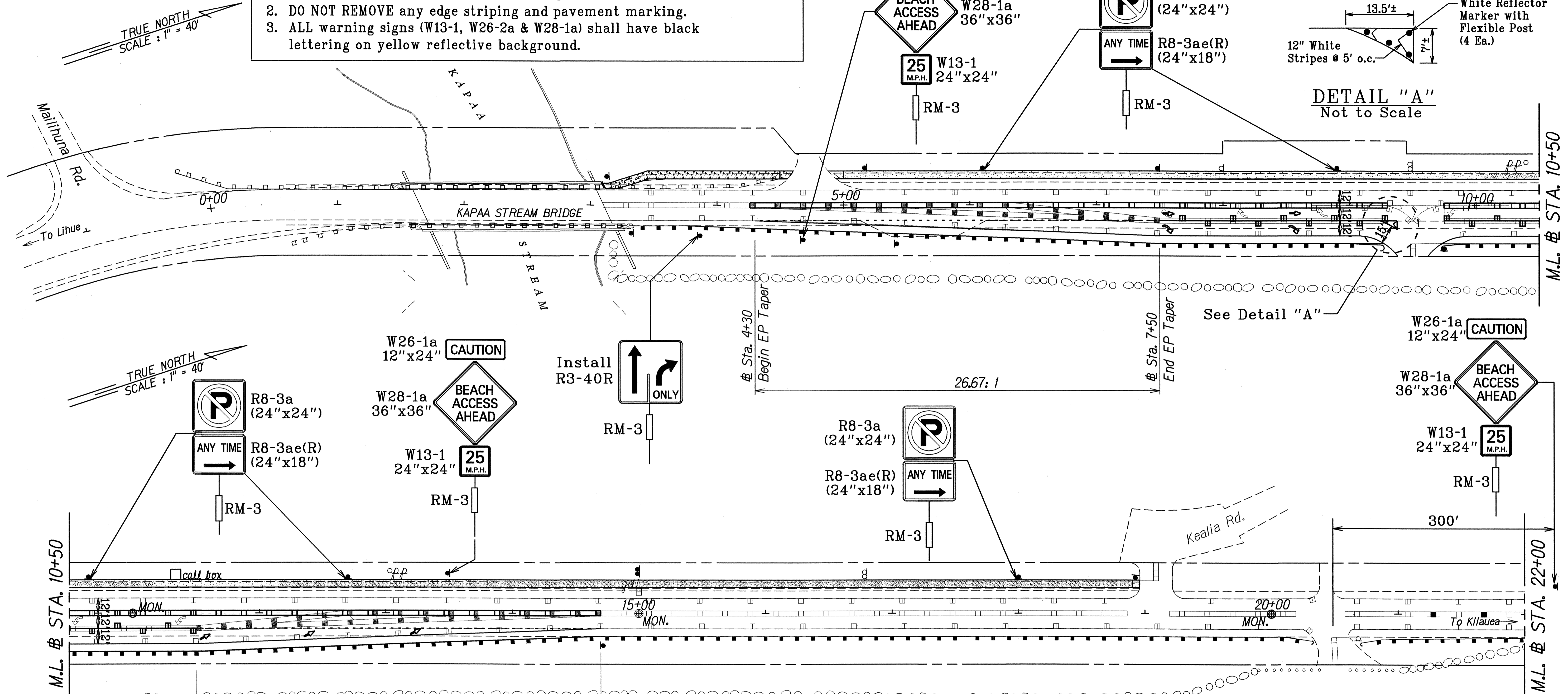
As-Built Plan Sheet 1 of 2 for  
Contract Plan Sheet No. 24 (Deleted Items Only),  
See Plan Sht. No 24S-1 for As-Built Plan Sht. 2 of 2.

AS-BUILT

FED. ROAD DIST. NO.	STATE	PROJ. NO.	FISCAL YEAR	SHEET NO.	TOTAL SHEETS
HAWAII	HAW.	56B-01-01M	2003	24S-1	34

**NOTES:**

1. Remove ALL existing centerline, channelized island and median lane pavement markers, arrows and striping from Sta. 4+30 to Sta. 14+70.
2. DO NOT REMOVE any edge striping and pavement marking.
3. ALL warning signs (W13-1, W26-2a & W28-1a) shall have black lettering on yellow reflective background.



TRUE NORTH  
SCALE: 1" = 40'

M.L. # STA. 10+50

M.L. # STA. 10+50

M.L. # STA. 22+00

**APPROXIMATE REMOVAL QUANTITIES:**

- Type A Pavement Marker - 24 Each
- Type C Pavement Marker - 24 Each
- Type D Pavement Marker - 18 Each
- Type H Pavement Marker - 64 Each
- 4" White Stripe - 350 L.F.
- 8" White Stripe - 300 L.F.
- 12" White Stripe - 200 L.F.
- 4" Double Solid Yellow Stripe - 1,640 L.F.
- Pavement Arrow - 6 Each
- Traffic Sign at Sta. 21+50 - 1 Eac.

**APPROXIMATE NEW QUANTITIES:**

- Type C Pavement Marker - 18 Each
- Type D Pavement Marker - 52 Each
- White Reflector Marker with Flexible Post - 4 Each
- 4" White Guide Line (Tape, Type III or Thermoplastic Extrusion) - 640 L.F.
- 8" White Stripe (Tape, Type I or Thermoplastic Extrusion) - 360 L.F.
- 8" White Stripe (Tape, type II or Thermoplastic Extrusion) - 30 L.F.
- 4" Double Solid Yellow Stripe (Tape, Type I or Thermoplastic Extrusion) - 1000 L.F.

**APPROXIMATE NEW QUANTITIES (cont.):**

- Pavement Arrow - 7 Each
- Reflector Marker (RM-3) - 4 Each
- R3-40R with Post - 1 Each
- W13-1 - 3 Each
- W26-1a - 3 Each
- W28-1a with Post - 3 Each

**LEGEND FOR AS-BUILT POSTINGS**

	Squiggly line for as-built deletion
	Double line for as-built deletion
	Text for as-built posting

As-Built Plan Sheet 2 of 2 for Contract  
Plan Sheet No. 24 (Added & Revised Items Only),  
See Plan Sht. No. 24 for As-Built Plan Sht. 1 of 2.

STATE OF HAWAII  
DEPARTMENT OF TRANSPORTATION  
HIGHWAYS DIVISION

**PAVEMENT MARKING & TRAFFIC SIGNING PLAN**

KUHIO HIGHWAY RESURFACING  
Vicinity of Kealia  
Project No. 56B-01-01M

Scale: 1"=40' Date: May 2003

SHEET No. T2 OF 6 SHEETS

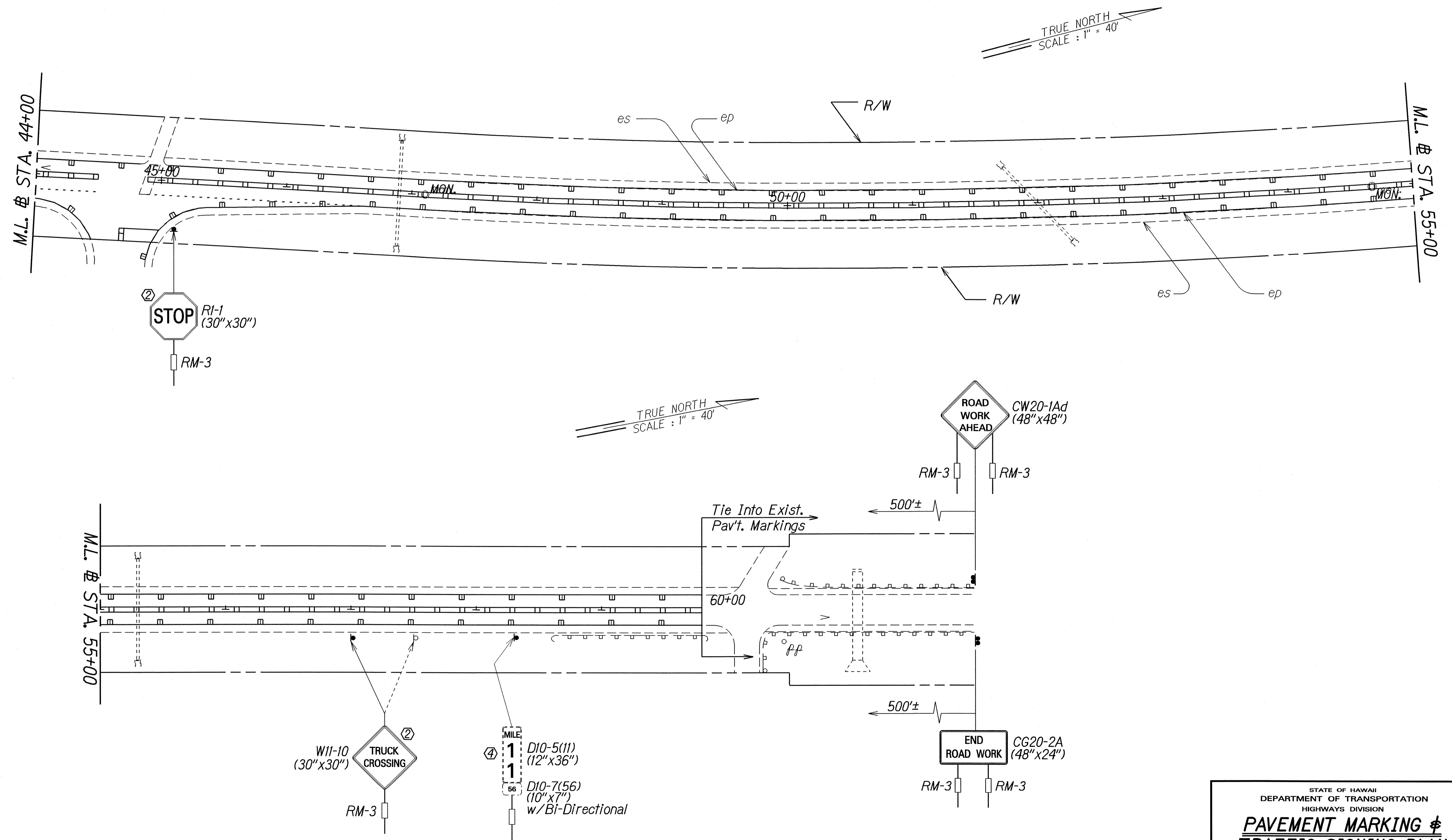
SURVEY PLOTTED BY	DATE
DRAWN BY	
DESIGNED BY	
QUANTITIES BY	
CHECKED BY	
AS-BUILT REVIEWED BY	

AS-BUILT

24S-1



FED. ROAD DIST. NO.	STATE	PROJ. NO.	FISCAL YEAR	SHEET NO.	TOTAL SHEETS
HAWAII	HAW.	56B-01-01M	2003	26	34



SURVEY PLOTTED BY	DATE
DRAWN BY	
TRACED BY	
DESIGNED BY	
CHECKED BY	
ORIGINAL PLAN	
NOTE BOOK	
DATE	
BY	
CHECKED BY	

- KEY:**
- ① Remove Exist. Sign(s) w/Post(s)
  - ② Remove Exist. Sign(s) w/Post(s) & Install New Sign(s) w/Post(s)
  - ③ Install New Sign(s) w/Post(s)
  - ④ Exist. Sign(s) & Post(s) to Remain

STATE OF HAWAII  
DEPARTMENT OF TRANSPORTATION  
HIGHWAYS DIVISION

**PAVEMENT MARKING &  
TRAFFIC SIGNING PLAN**

**KUHIO HIGHWAY RESURFACING  
Vicinity of Kealia  
Project No. 56B-01-01M**

Scale: 1"=40' Date: May 2003

SHEET No. 74 OF 6 SHEETS