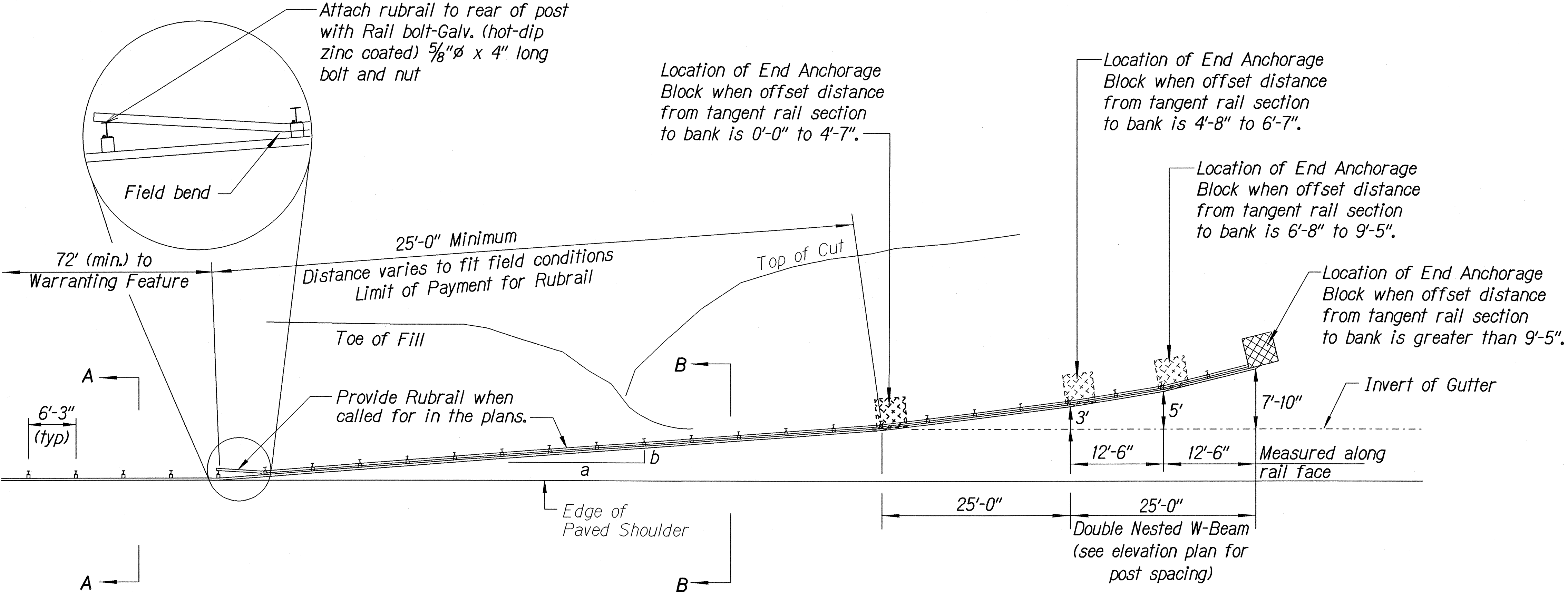
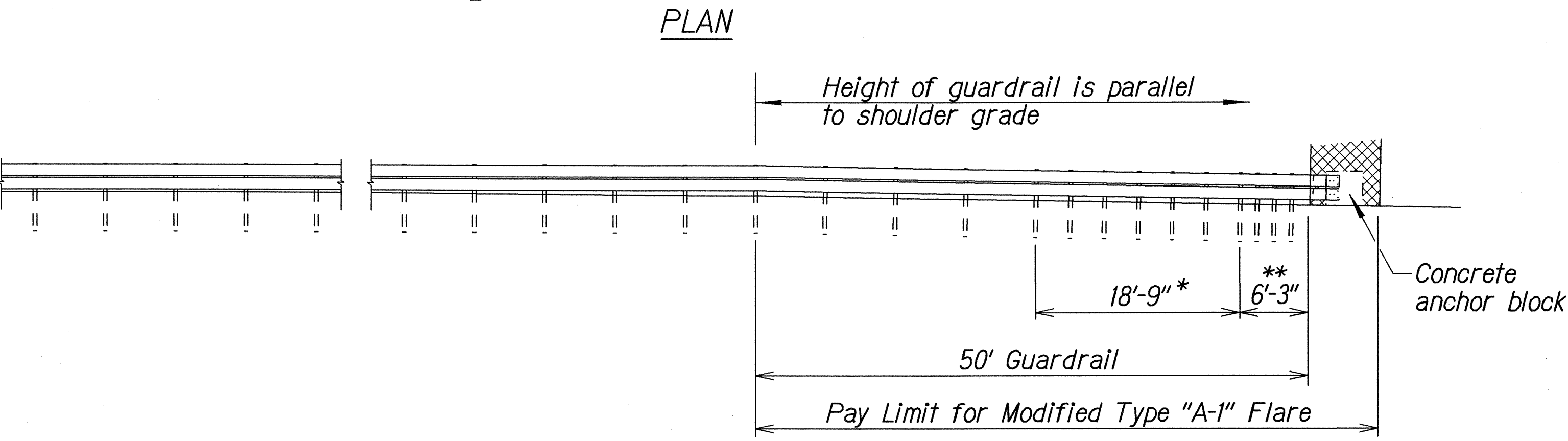


FED. ROAD DIST. NO.	STATE	PROJ. NO.	FISCAL YEAR	SHEET NO.	TOTAL SHEETS
HAWAII	HAW.	56B-01-01M	2003	14	34

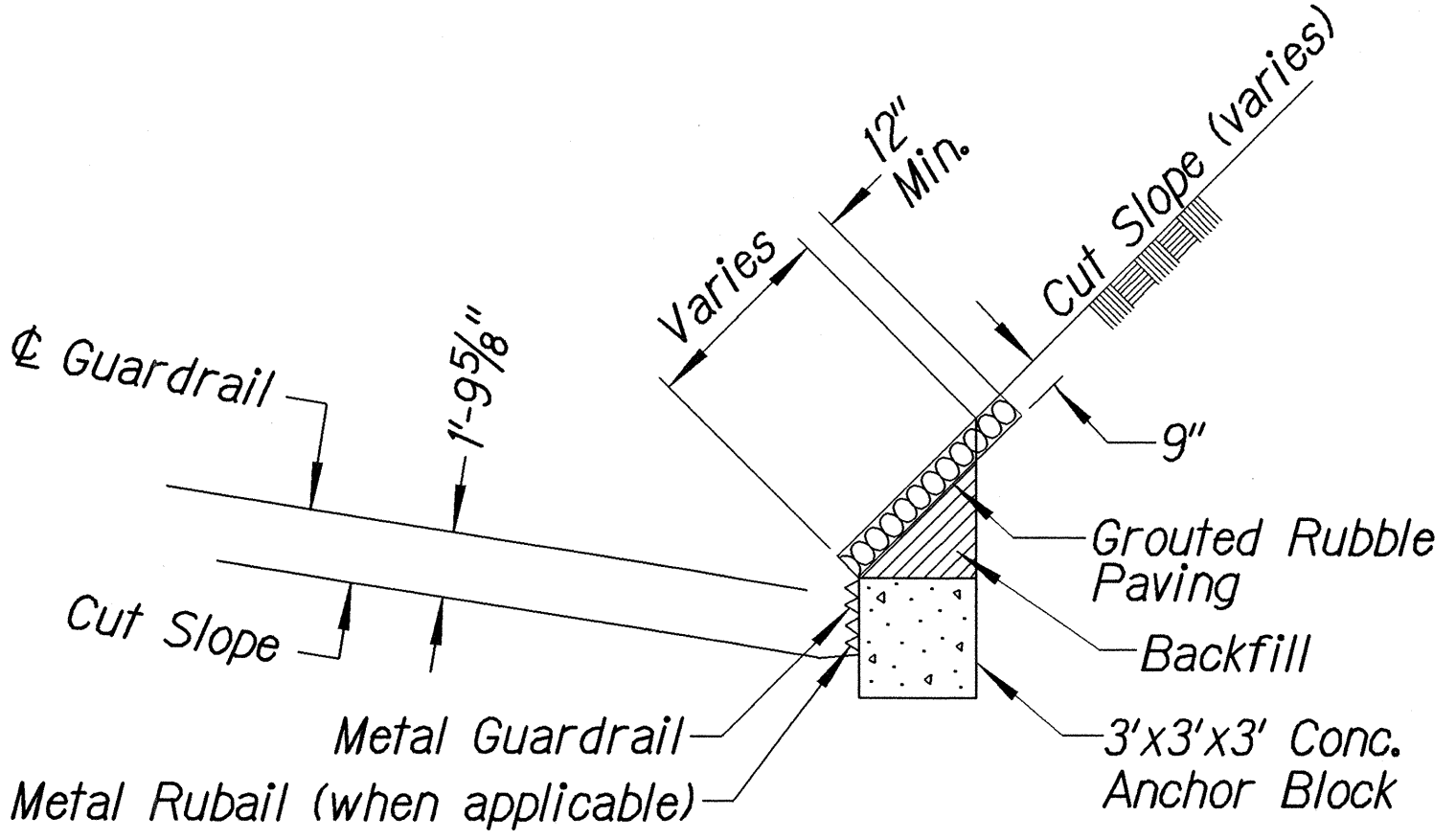


Design speed mph	a:b
68	15:1
62	13:1
56	12:1
50	11:1
43	10:1
37	9:1
31	7:1

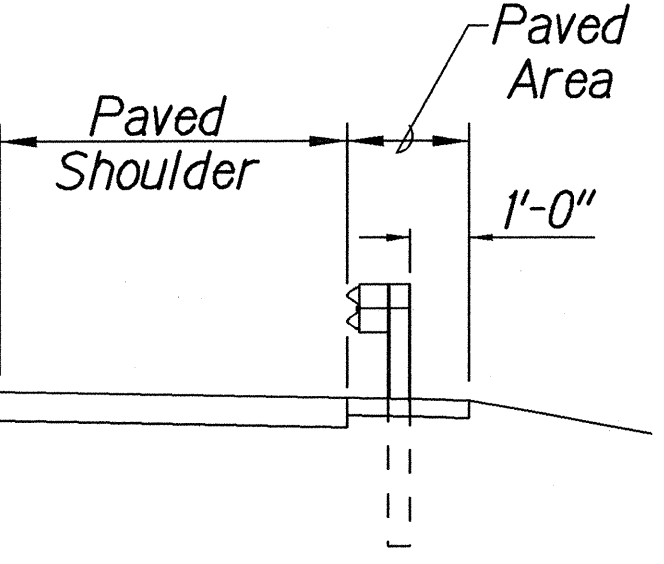


ELEVATION (Profile Along Rail)

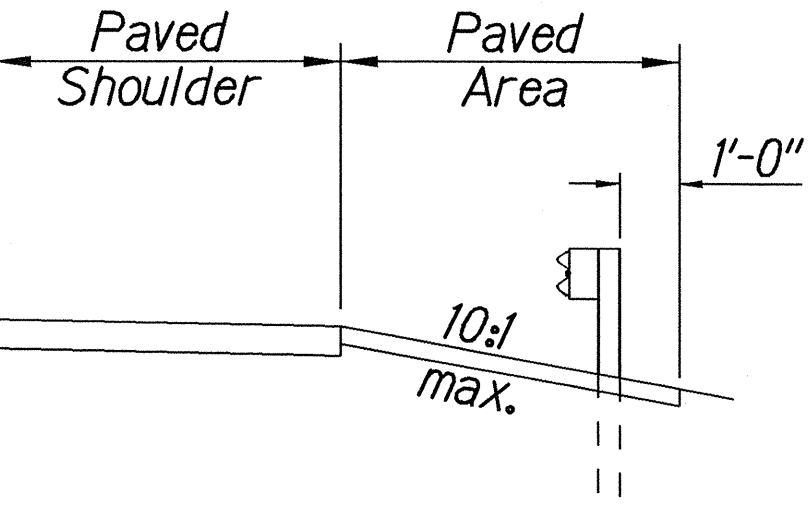
* Posts at 3'-1 1/2" o.c.
 ** Posts at 1'-6 3/4" o.c.



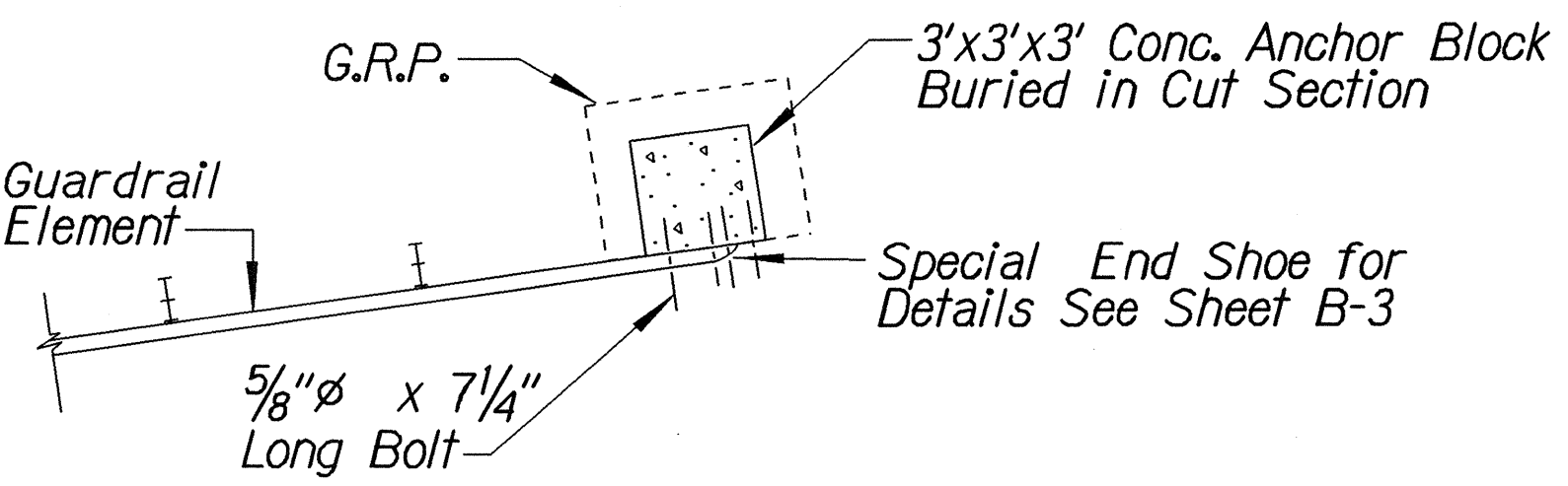
ANCHOR BLOCK IN CUT SECTION



Section A-A



Section B-B



PLAN - ANCHOR BLOCK IN CUT SECTION

General Notes

1. All posts are 6'-0" in length within the 50'-0" pay limit for the Modified Type "A-1" Flare without rubrail.
2. Whenever swales or a change in grade is encountered within the 50'-0" pay limit for the Modified Type "A-1" Flare, a rubrail shall be installed and all posts shall have a minimum embedment of 4'-0". Post lengths shall be adjusted to provide the minimum embedment.
3. All fasteners, posts, blocks and rail elements shall conform to the latest edition and amendments of "A Guide to Standardized Highway Barrier Rail Hardware", a report prepared and approved by the AASHTO-AGCARTBA Joint Cooperative Committee and HDOT's Statewide Guideline for Permanent Highway Safety Hardware.
4. Limit of payment for Modified Type "A-1" Flare shall be 50'-0" from End Shoe including Rubrail (when applicable), Anchor Block and GRP work.
5. Excavation, Anchor Block, Backfill and GRP work shall be considered incidental to the Modified Type "A-1" Flare.

STATE OF HAWAII

DEPARTMENT OF TRANSPORTATION

HIGHWAYS DIVISION

MODIFIED TYPE "A-1" FLARE

KUHIO HIGHWAY RESURFACING

Vicinity of Kealia

Project No. 56B-01-01M

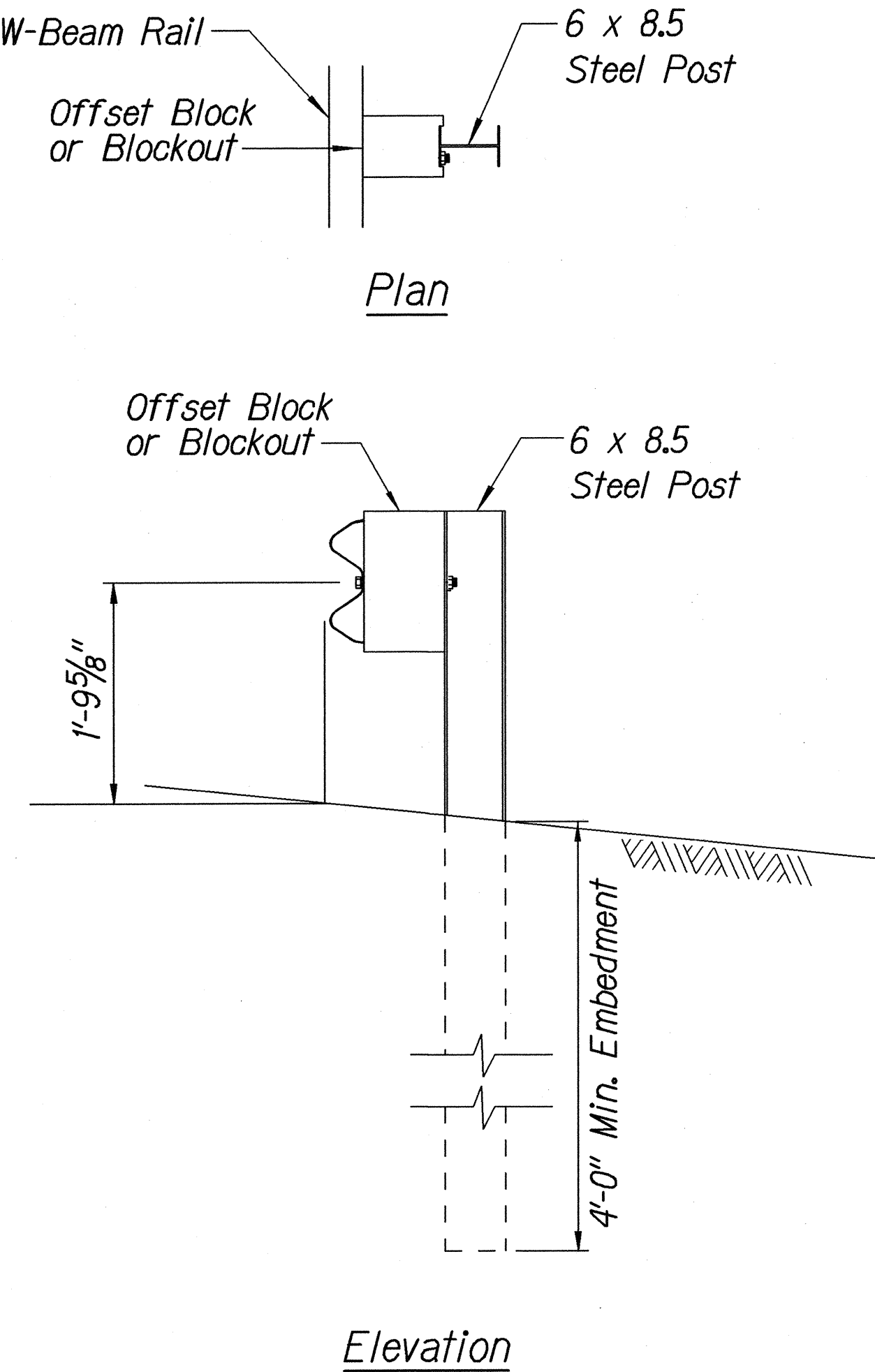
Scale: Not to Scale

Date: April, 2003

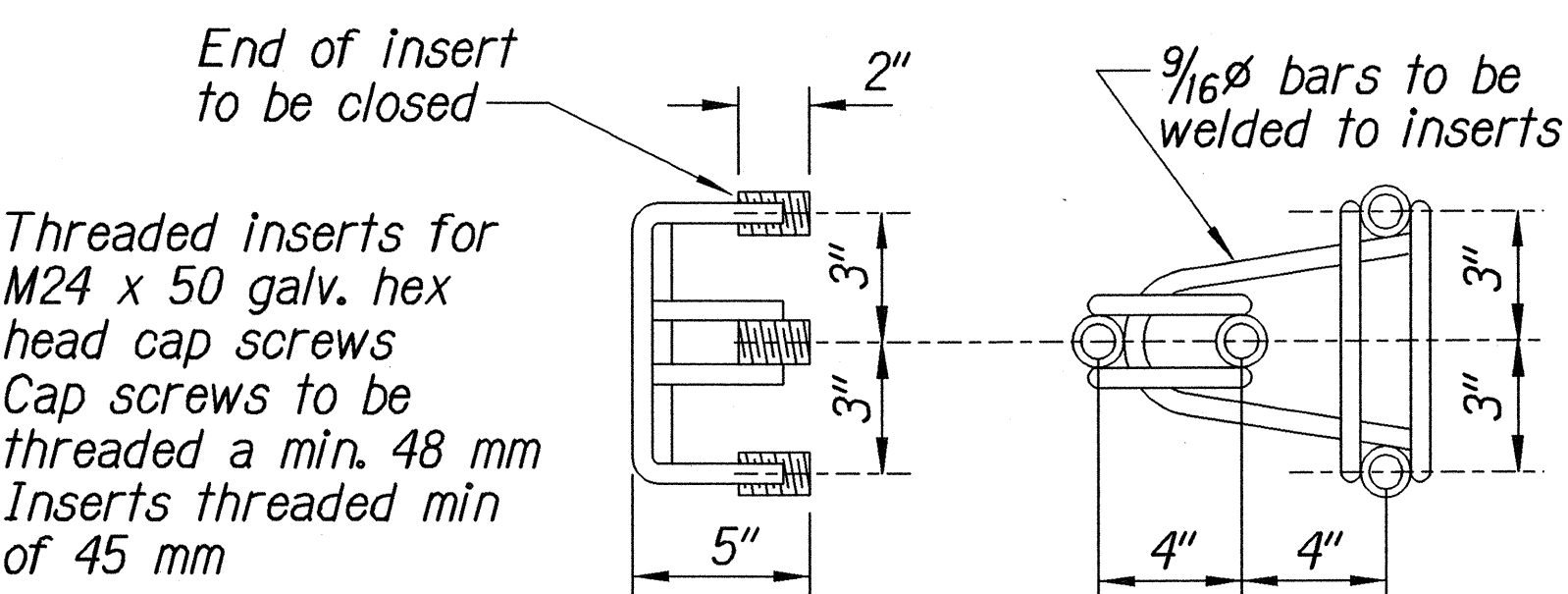
SHEET No. 1 OF 2 SHEETS

SURVEY PLOTTED BY	DATE
DRAWN BY	
TRACED BY	
CHECKED BY	
NOTE BOOK	
CHECKED BY	
ORIGINAL PLAN	

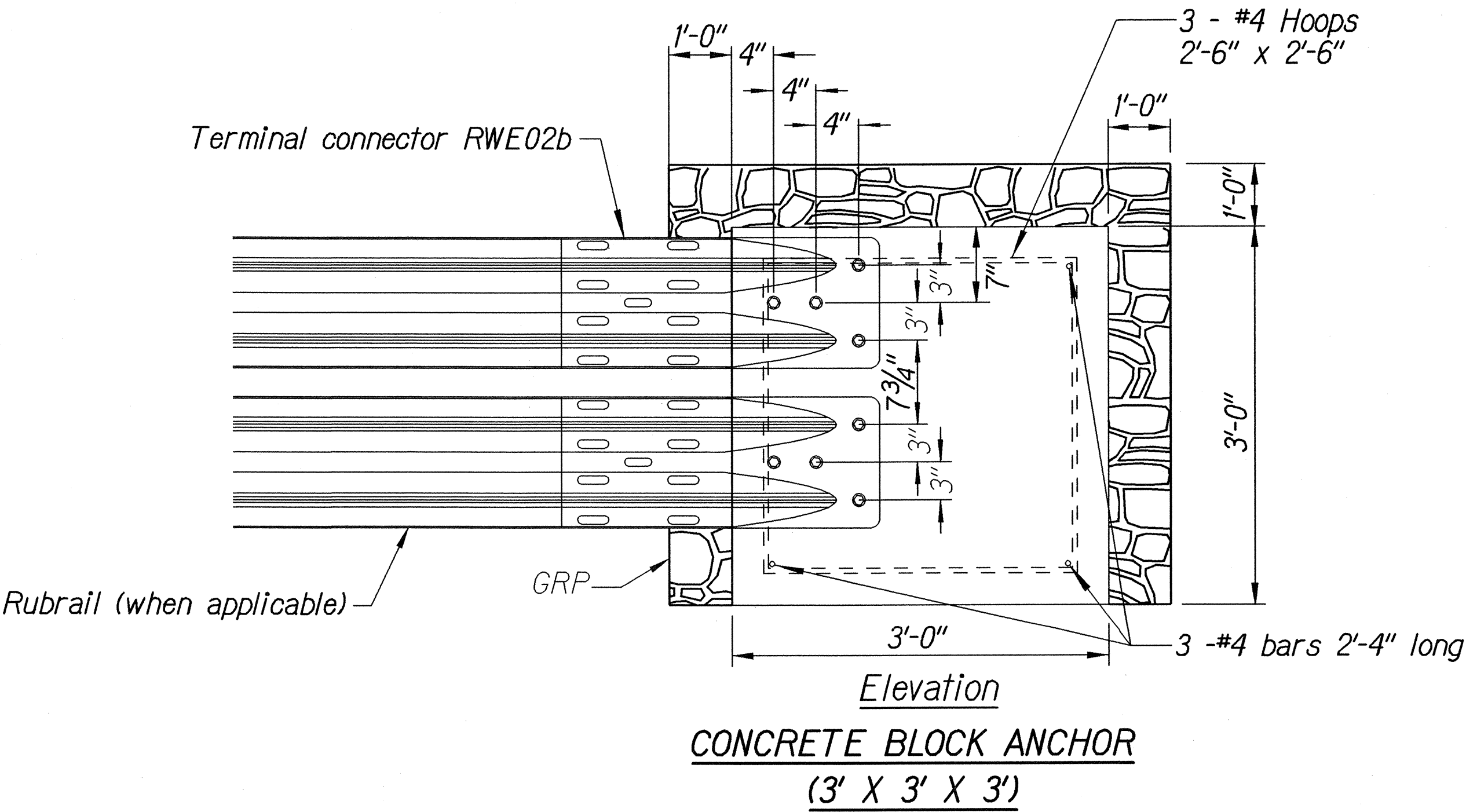
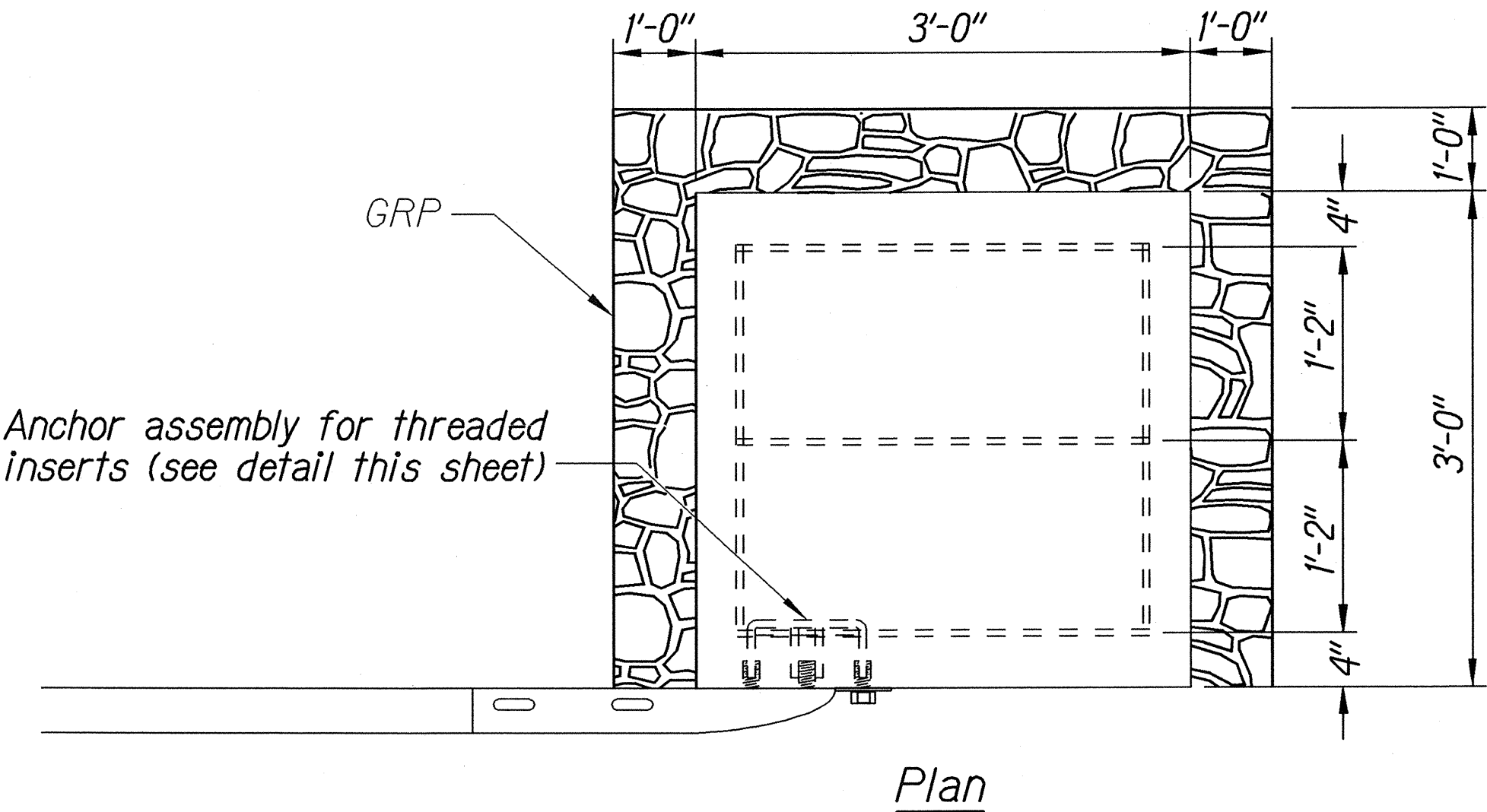
FED. ROAD DIST. NO.	STATE	PROJ. NO.	FISCAL YEAR	SHEET NO.	TOTAL SHEETS
HAWAII	HAW.	56B-01-01M	2003	15	34



STRONG POST W-BEAM GUARDRAIL



ANCHOR ASSEMBLY
CONCRETE BLOCK ANCHOR



BACKSLOPE ANCHOR TERMINAL END ANCHORAGE DETAILS
MODIFIED TYPE "A-1" FLARE

Note:

All fasteners, posts, blocks and rail elements shall conform to the latest edition and amendments of "A Guide to Standardized Highway Barrier Rail Hardware," a report prepared and approved by the AASHTO-AGCARTBA Joint Cooperative Committee and HDOT's Statewide Guideline for Permanent Highway Safety Hardware.

SURVEY PLOTTED BY	DATE
DRAWN BY	
TRACED BY	
NOTE BOOK	
QUANTITIES BY	
CHECKED BY	

STATE OF HAWAII
DEPARTMENT OF TRANSPORTATION
HIGHWAYS DIVISION

MODIFIED TYPE "A-1" FLARE
KUHIO HIGHWAY RESURFACING
Vicinity of Kealia
Project No. 56B-01-01M
Scale: Not to Scale Date: April, 2003
SHEET No. 2 OF 2 SHEETS