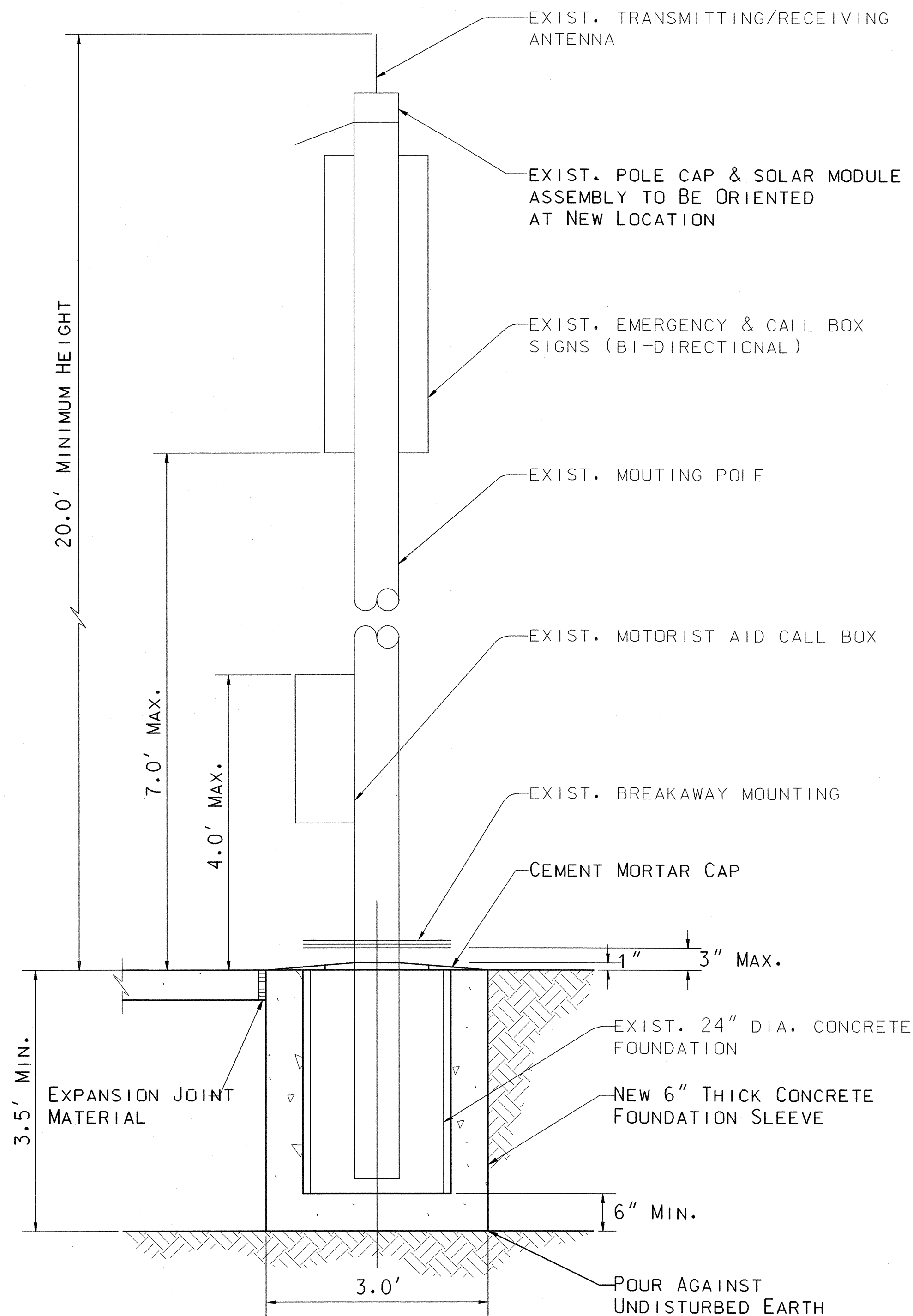
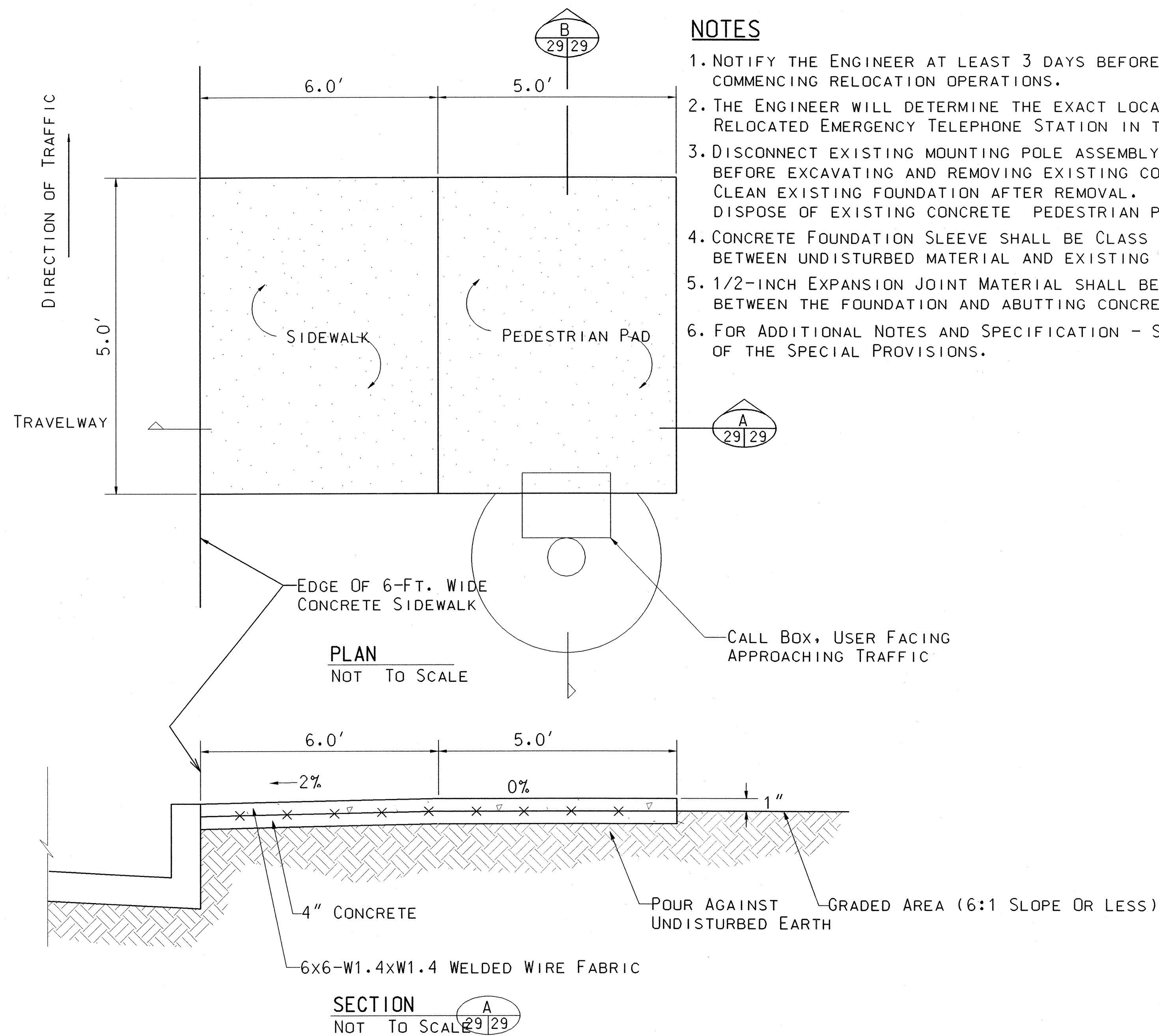


FED. ROAD DIST. NO.	STATE	PROJ. NO.	FISCAL YEAR	SHEET NO.	TOTAL SHEETS
HAWAII	HAW.	56B-01-01M	2003	29	34



SECTION B  
NOT TO SCALE



### NOTES

1. NOTIFY THE ENGINEER AT LEAST 3 DAYS BEFORE COMMENCING RELOCATION OPERATIONS.
2. THE ENGINEER WILL DETERMINE THE EXACT LOCATION OF THE RELOCATED EMERGENCY TELEPHONE STATION IN THE FIELD.
3. DISCONNECT EXISTING MOUNTING POLE ASSEMBLY FROM BASE BEFORE EXCAVATING AND REMOVING EXISTING CONCRETE FOUNDATION. CLEAN EXISTING FOUNDATION AFTER REMOVAL. REMOVE AND DISPOSE OF EXISTING CONCRETE PEDESTRIAN PAD.
4. CONCRETE FOUNDATION SLEEVE SHALL BE CLASS B PLACED BETWEEN UNDISTURBED MATERIAL AND EXISTING FOUNDATION.
5. 1/2-INCH EXPANSION JOINT MATERIAL SHALL BE PLACED BETWEEN THE FOUNDATION AND ABUTTING CONCRETE PAD.
6. FOR ADDITIONAL NOTES AND SPECIFICATION - SEE SECTION 664 OF THE SPECIAL PROVISIONS.

ORIGINAL PLAN	SURVEY PLOTTED BY	DATE
NOTE BOOK	DRAWN BY	
REVISIONS	TRACED BY	
	QUANTITIES BY	
	CHECKED BY	

## DETAILS FOR RELOCATION OF EMERGENCY TELEPHONE CALL BOX

NOT TO SCALE

STATE OF HAWAII  
DEPARTMENT OF TRANSPORTATION  
HIGHWAYS DIVISION

**EMERGENCY TELEPHONE CALL BOX**  
**RELOCATION DETAIL**  
**KUHIO HIGHWAY RESURFACING**  
**Vicinity of Kealia**  
**Project No. 56B-01-01M**  
Scale: Not to Scale      Date: April, 2003