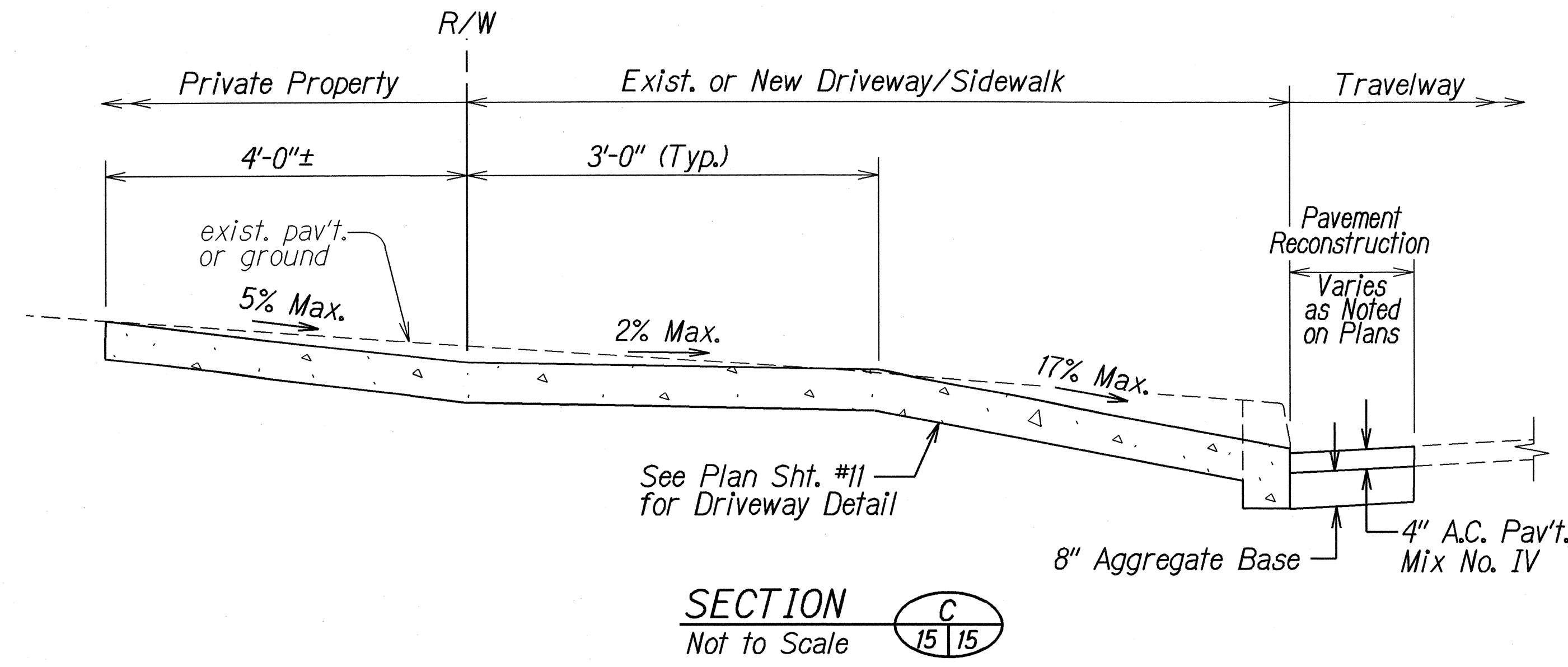
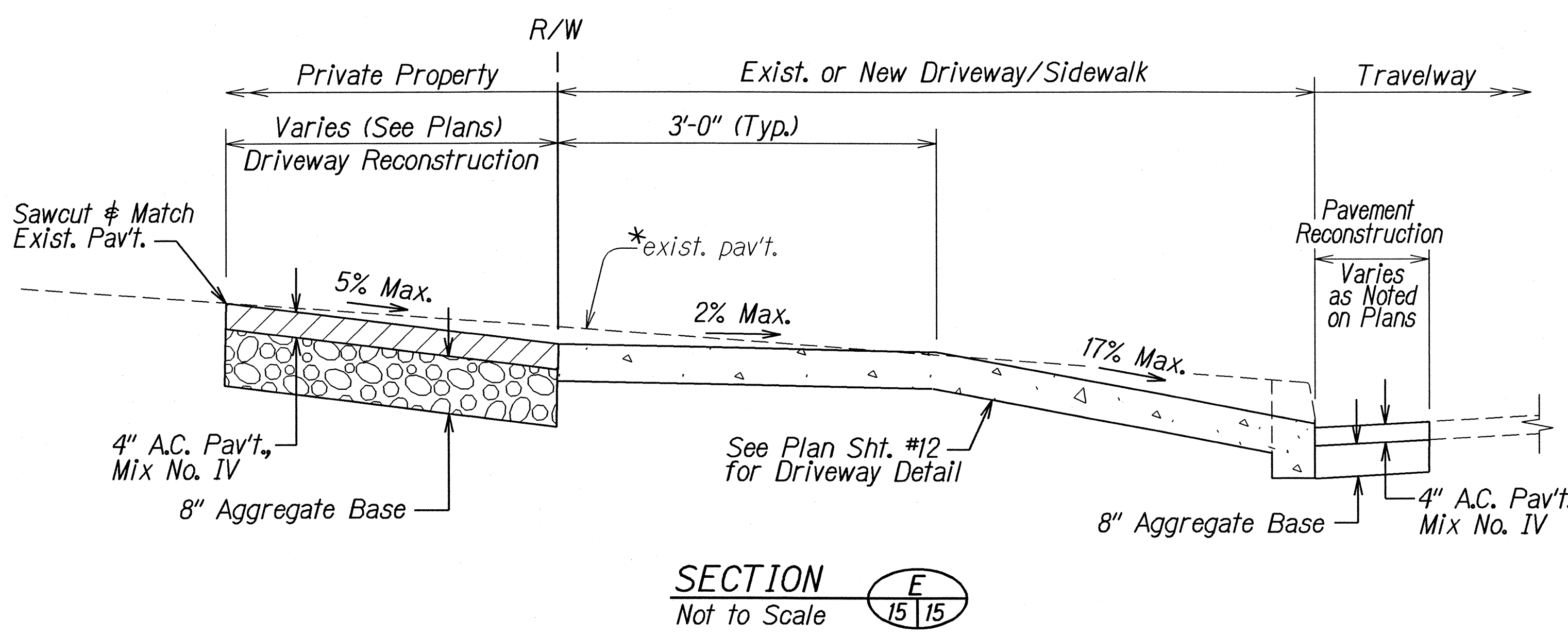
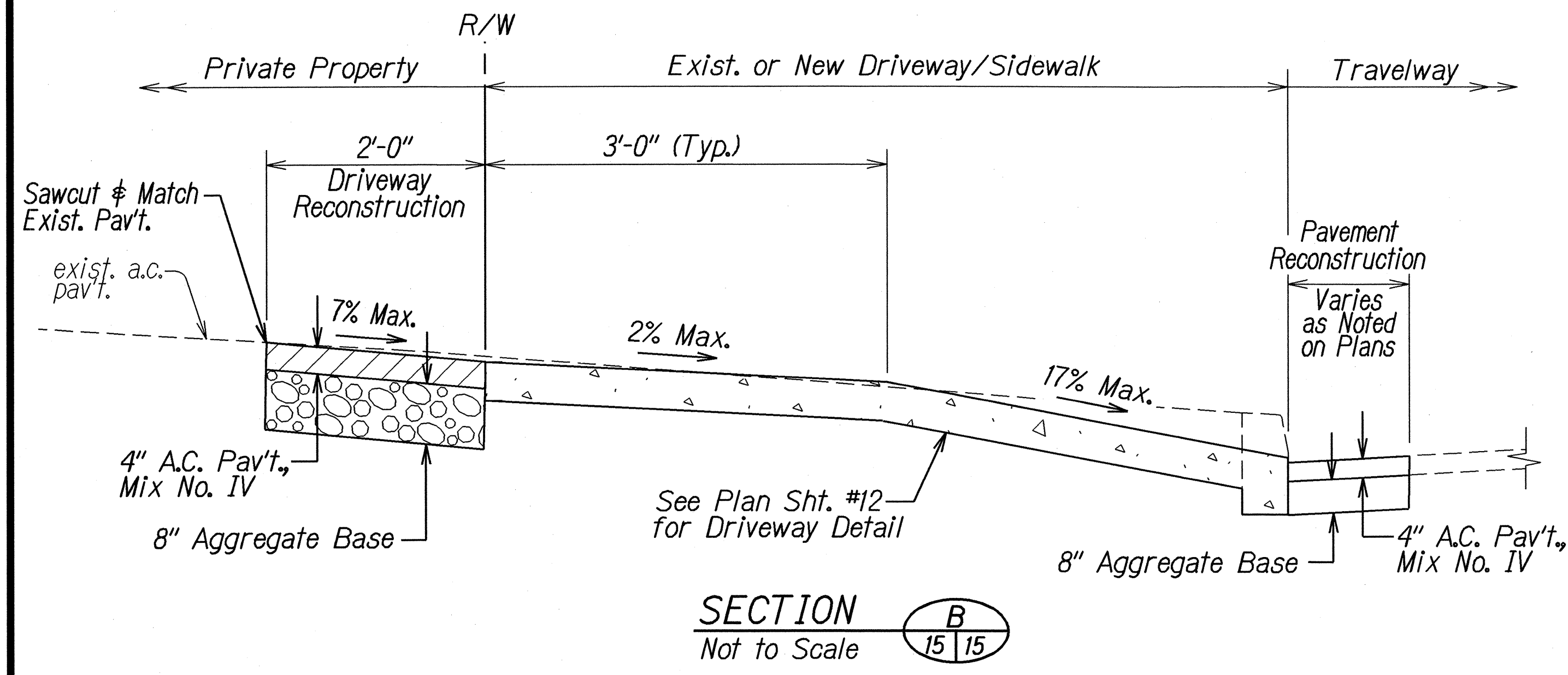
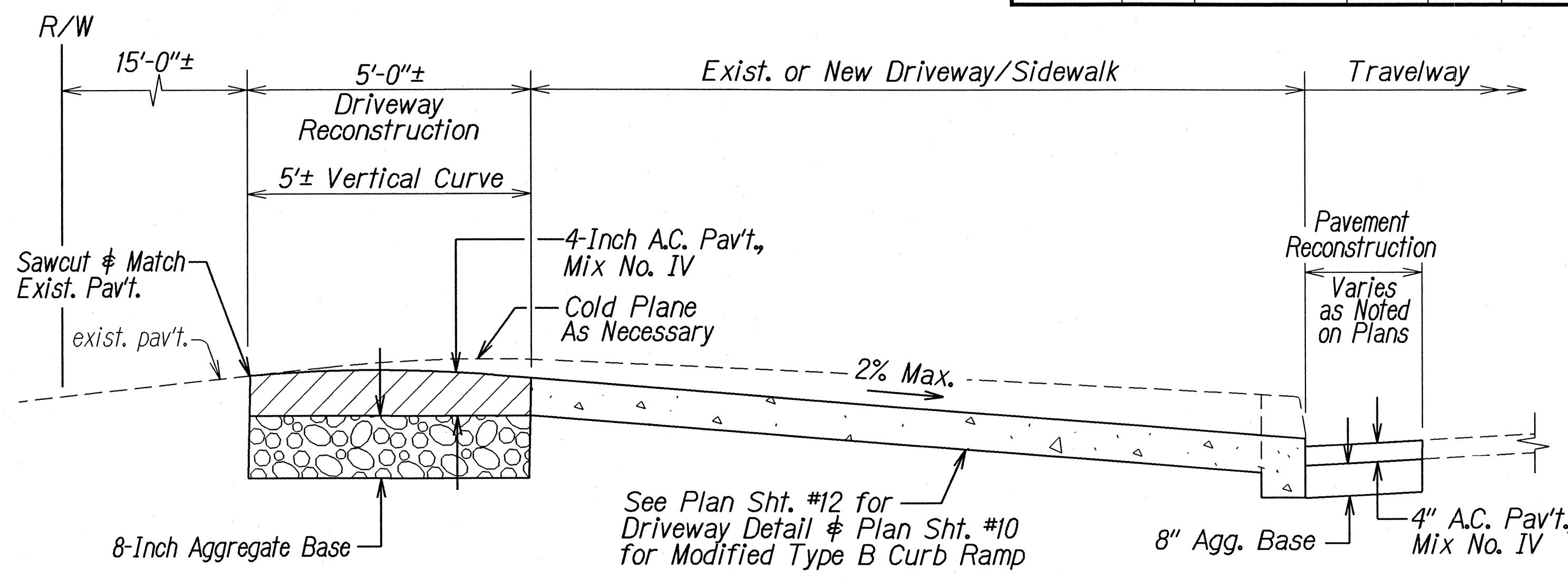
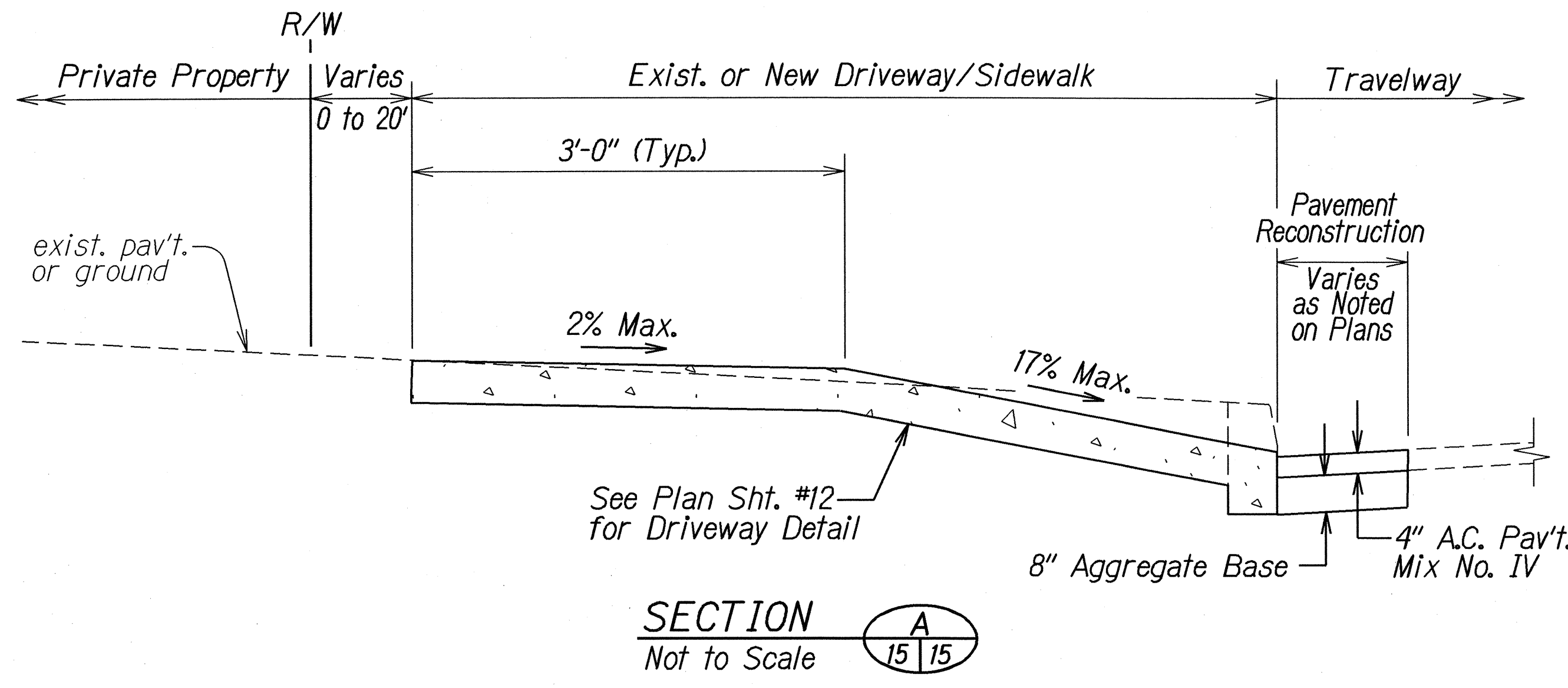


FED. ROAD DIST. NO.	STATE	FEDERAL-AID PROJ. NO.	FISCAL YEAR	SHEET NO.	TOTAL SHEETS
HAWAII	HAW.	CMAQ-056-1(47)	2003	15	50



- Notes:**
- \* 1. For clarity, Curb, Type 2D for the existing landscape area (planter) is not shown hereon. The new concrete curb shall have the same top elevation as that of the replaced concrete curb. Limits of replaced curb are shown on roadway plans.
  2. For clarity, driveway details are not shown hereon. See standard plans for typical driveway details.
  3. Minimum concrete approach thickness:
    - a. Residential - 4"
    - b. Commercial - 6"
  4. All concrete gutters shall be longitudinally broom finished.
  5. The top of all types of concrete curbs shall be longitudinally broom finished.
  6. All removal and disposal work, sawcutting, cold planing, excavating and backfilling, asphalt concrete pavement, aggregate base course, reinforcing steel and concrete curb and/or gutter shall be considered incidental to the specific driveway contract items.

SURVEY PLOTTED BY	DATE
DRAWN BY	2/03
DESIGNED BY	
NOTED BY	
CHECKED BY	
ORIGINAL PLAN	
NOTE BOOK	
RELATION	
QUANTITIES BY	
CHECKED BY	

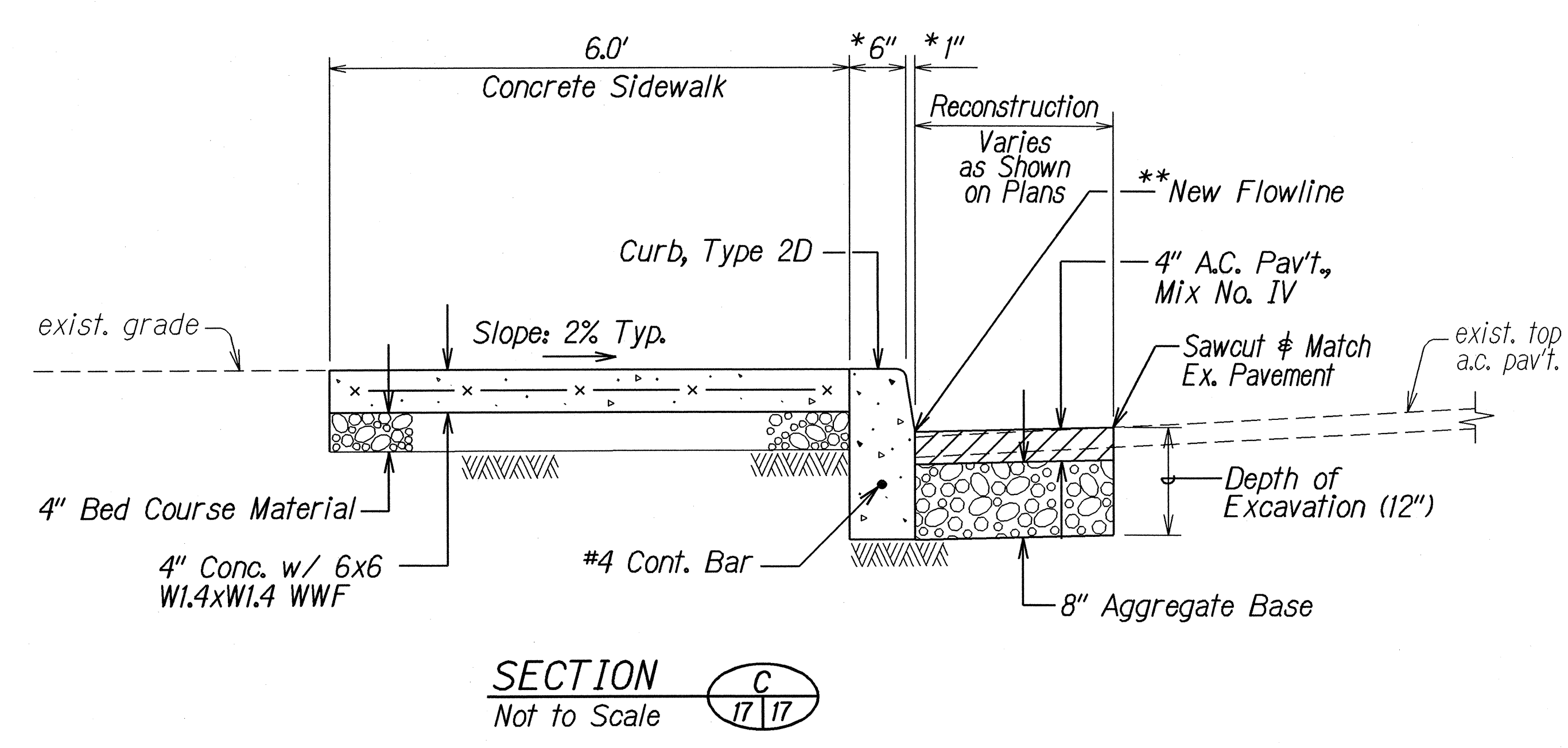
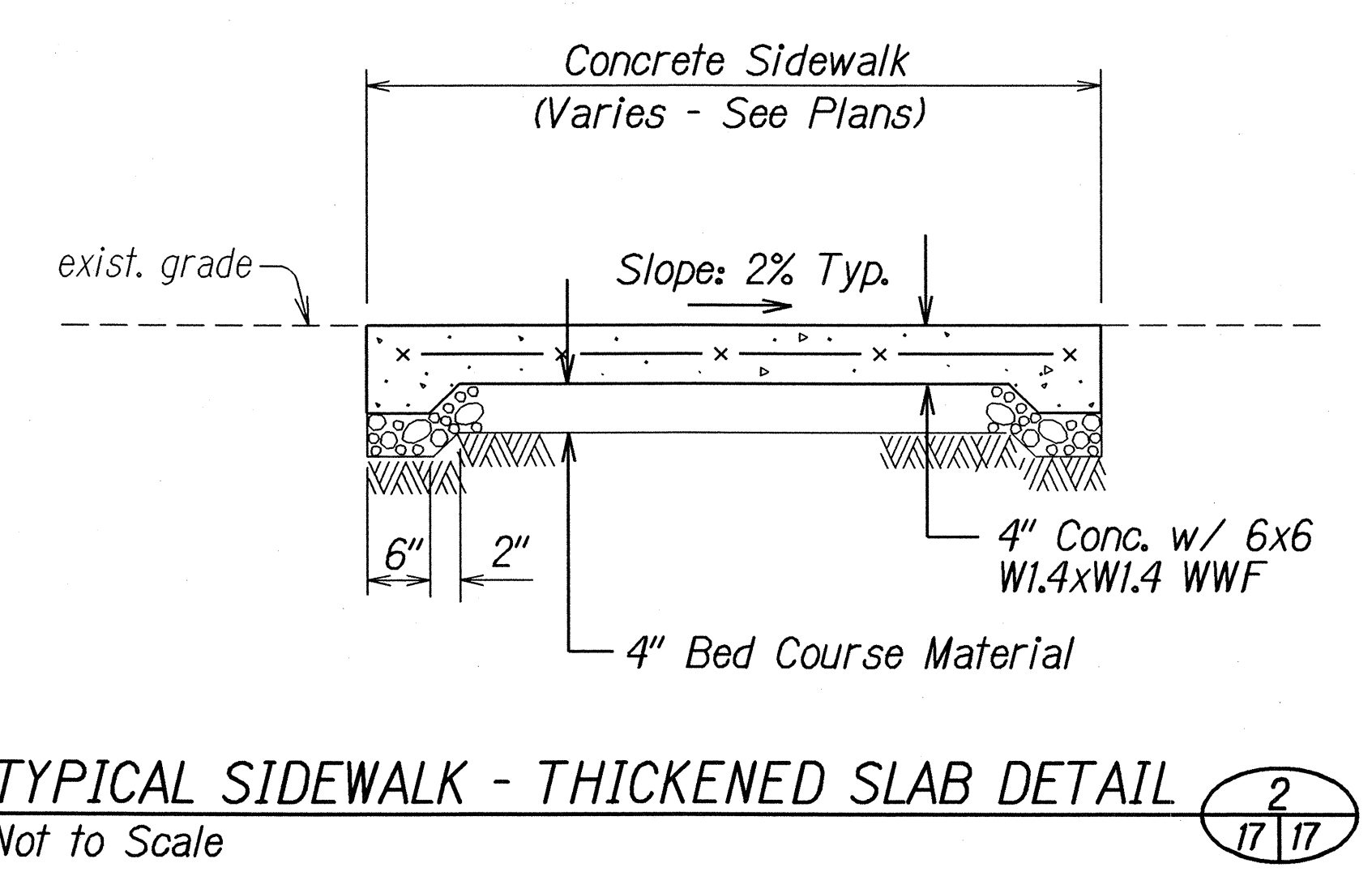
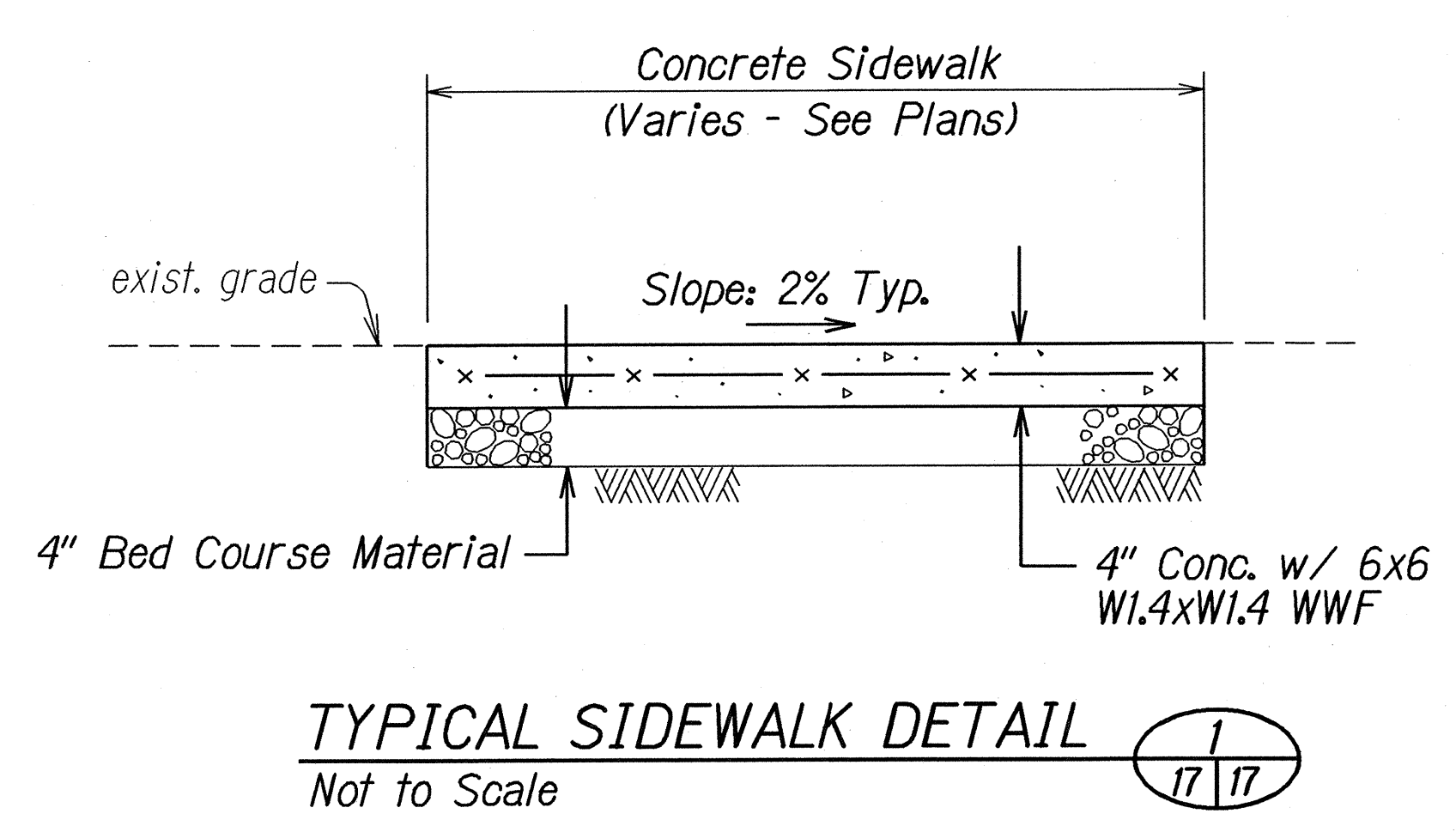
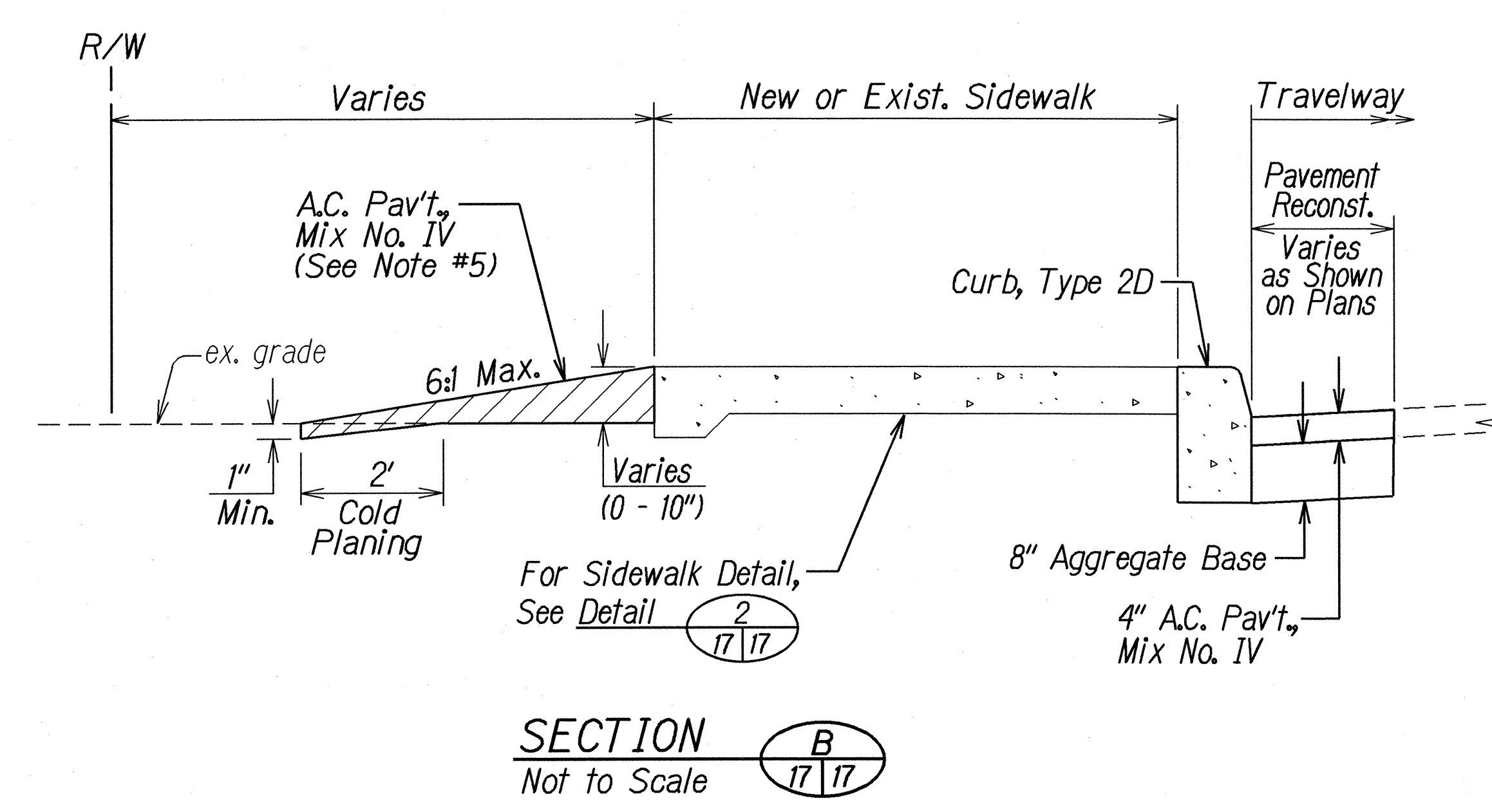
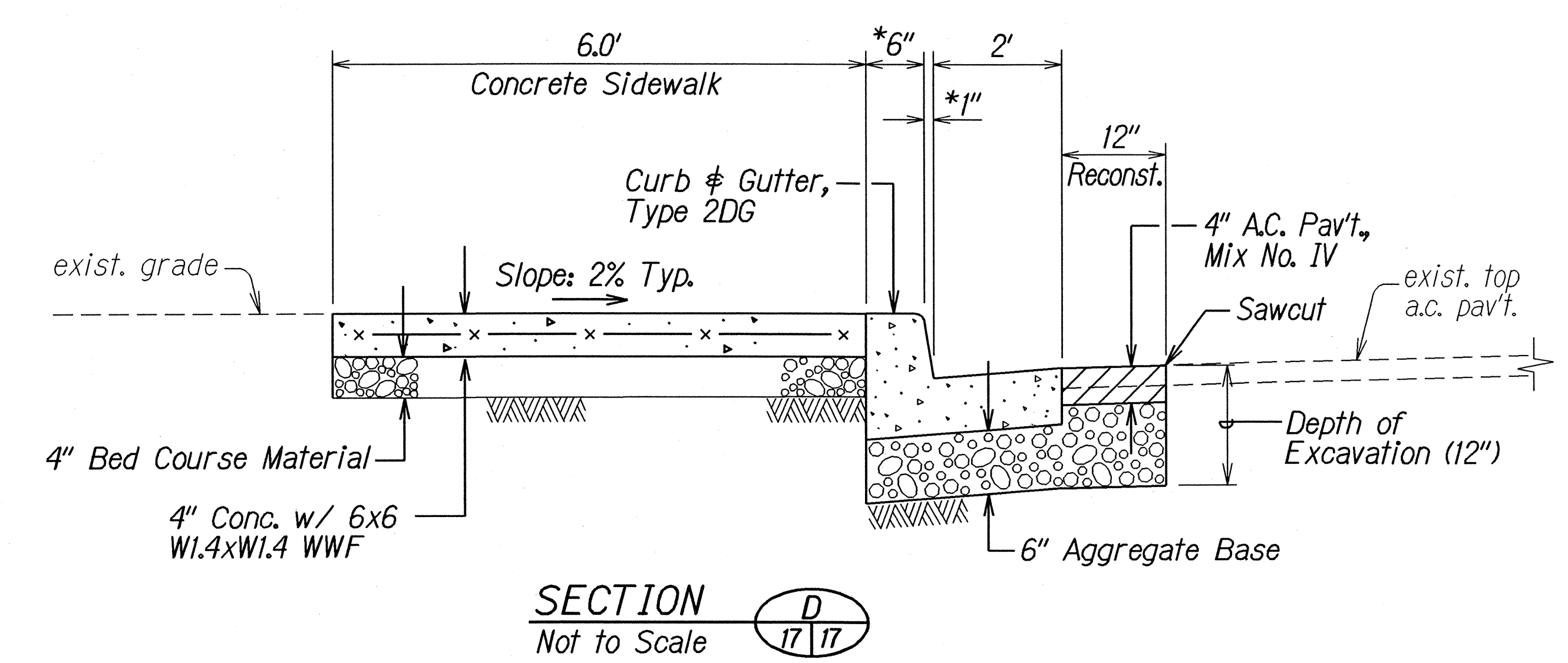
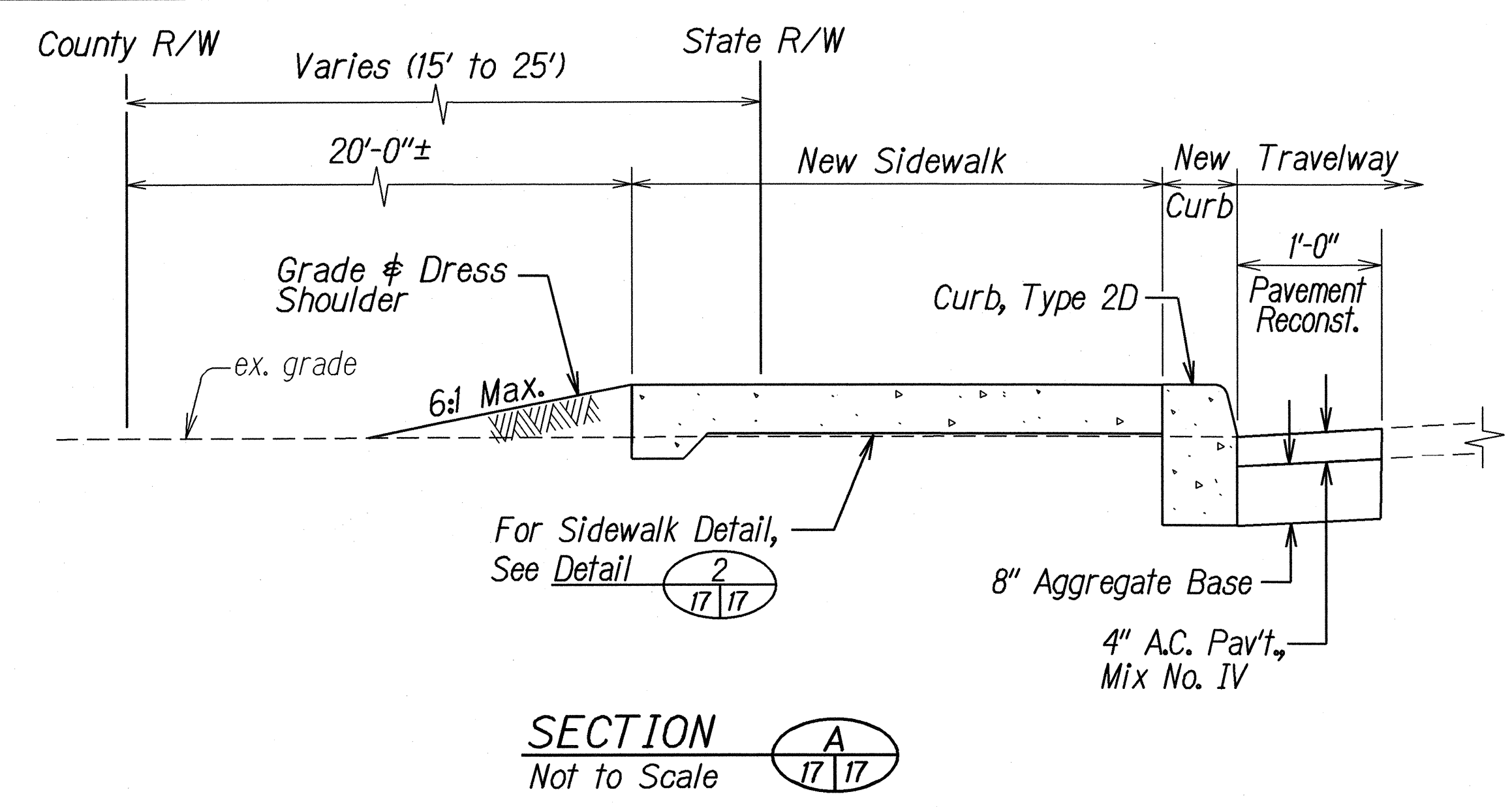
STATE OF HAWAII  
DEPARTMENT OF TRANSPORTATION  
HIGHWAYS DIVISION

**TYPICAL SECTIONS**  
**KUHIO HIGHWAY**  
**Pedestrian Facilities and ADA Compliance**  
**at Various Locations**  
**Federal-Aid Project No. CMAQ-056-1(47)**  
Scale: As Shown      Date: March 2003  
SHEET No. 1 OF 5 SHEETS





FED. ROAD DIST. NO.	STATE	FEDERAL-AID PROJ. NO.	FISCAL YEAR	SHEET NO.	TOTAL SHEETS
HAWAII	HAW.	CMAQ-056-11(47)	2003	17	50



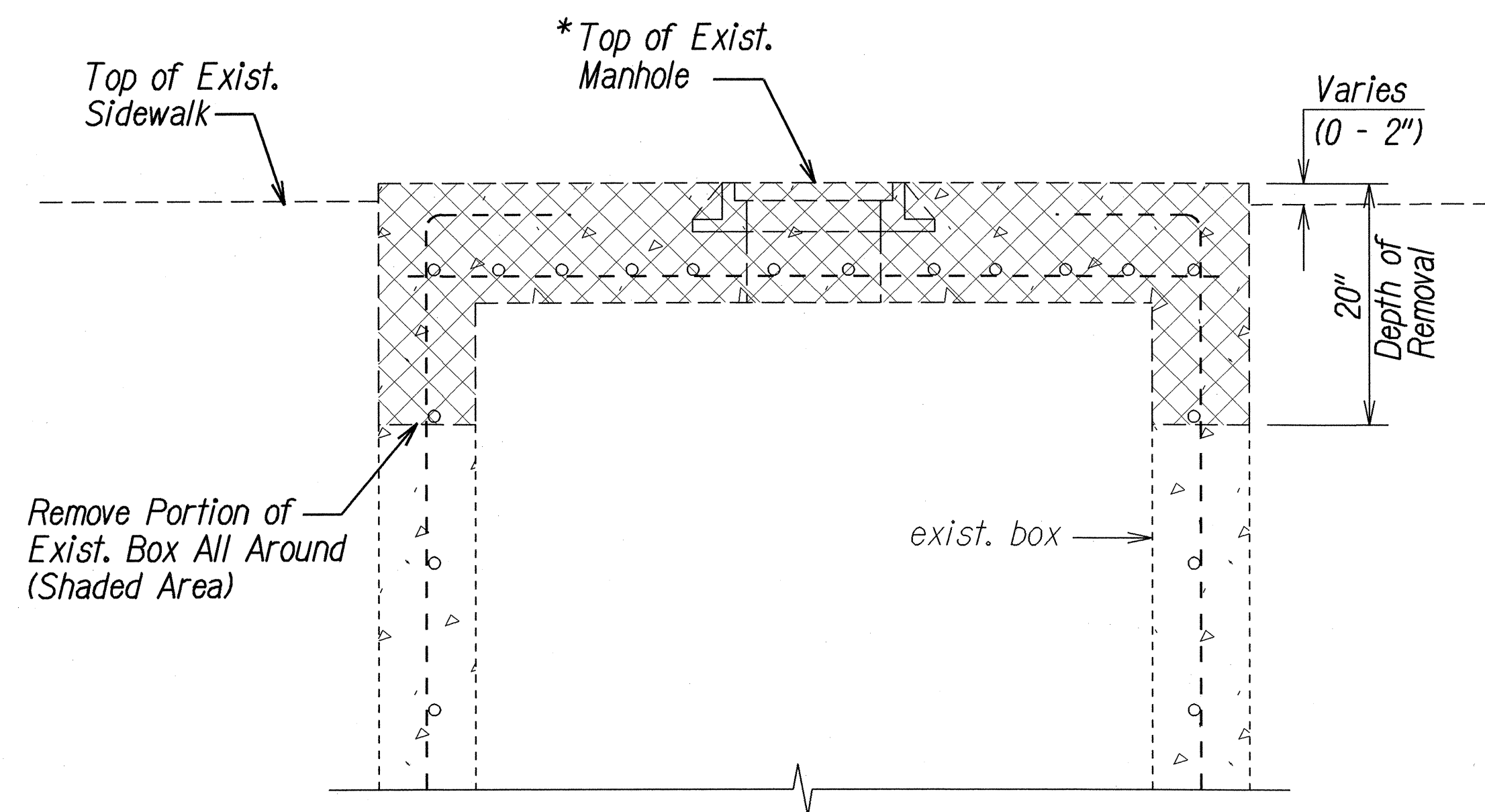
- Notes:
- \*1. Match width, height & batter of adjacent curb and/or gutter.
  - \*\*2. New flowline elevation may be located at the same or above or below the existing flowline.
  3. See Standard Plan D-4 for Curb, Type 2D and Curb & Gutter, Type 2DG details not shown.
  4. All removal and disposal work, sawcutting, cold planing, excavating and backfilling, asphalt concrete pavement, bed course material, aggregate base course, reinforcing steel and concrete curb and/or gutter shall be considered incidental to the specific curb ramp, sidewalk or driveway contract items.
  5. Asphalt pavement, Mix No. IV overlay behind sidewalk shall be considered incidental to the specific sidewalk, driveway or curb ramp contract items.
  6. The top of all types of concrete curbs shall be longitudinally broom finished.
  7. All concrete gutters shall be longitudinally broom finished.

SURVEY PLOTTED BY	DATE
DRAWN BY	2/03
DESIGNED BY	
NOTED BY	
CHECKED BY	
ORIGINAL PLAN	
NOTE BOOK	
REVISION	
QUANTITIES BY	
CHECKED BY	

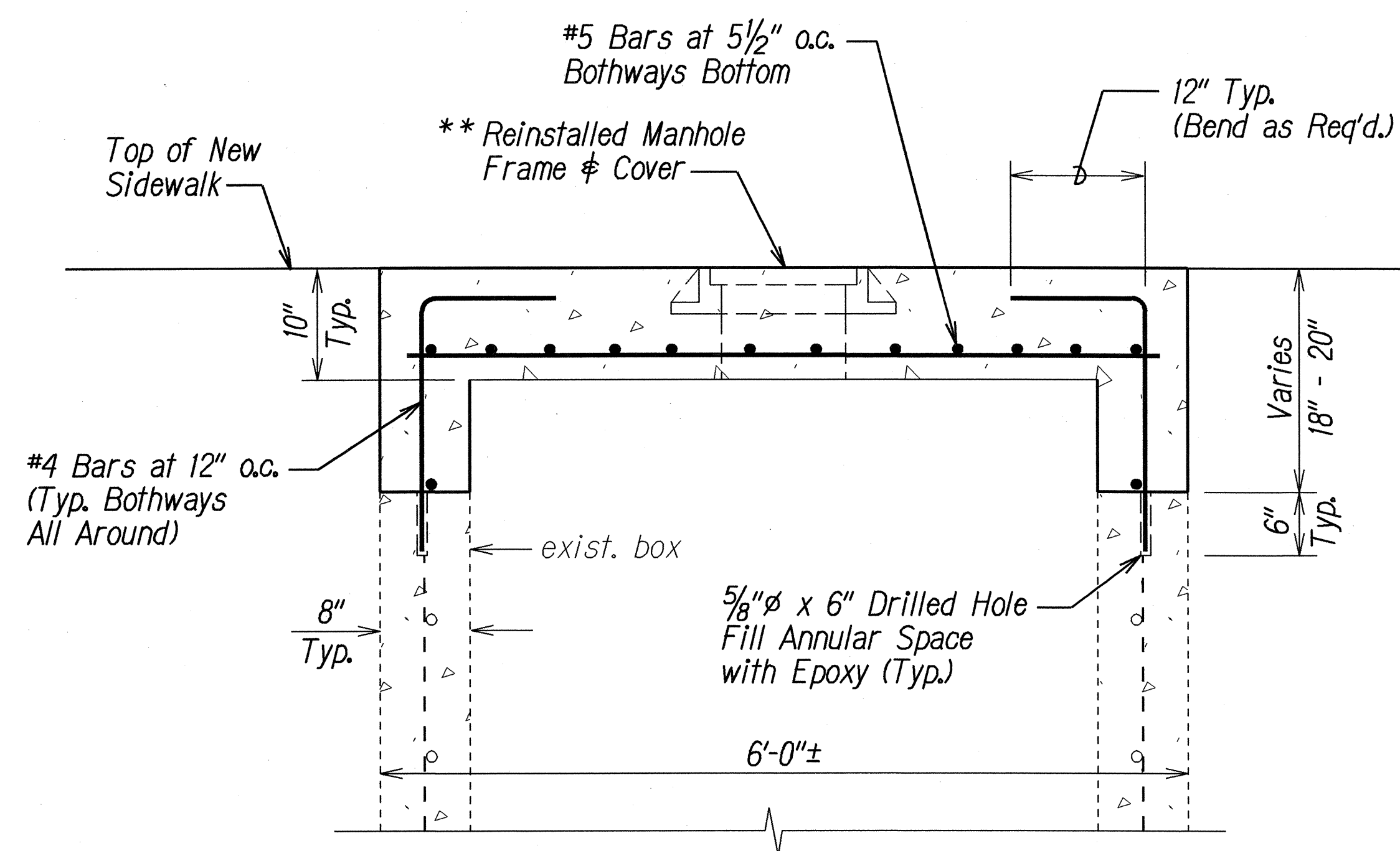
STATE OF HAWAII  
DEPARTMENT OF TRANSPORTATION  
HIGHWAYS DIVISION

**TYPICAL SECTIONS**  
**KUHIO HIGHWAY**  
**Pedestrian Facilities and ADA Compliance**  
**at Various Locations**  
**Federal-Aid Project No. CMAQ-056-11(47)**  
Scale: As Shown      Date: March 2003  
SHEET No. 3 OF 5 SHEETS

FED. ROAD DIST. NO.	STATE	FEDERAL-AID PROJ. NO.	FISCAL YEAR	SHEET NO.	TOTAL SHEETS
HAWAII	HAW.	CMAQ-056-1(47)	2003	18	50



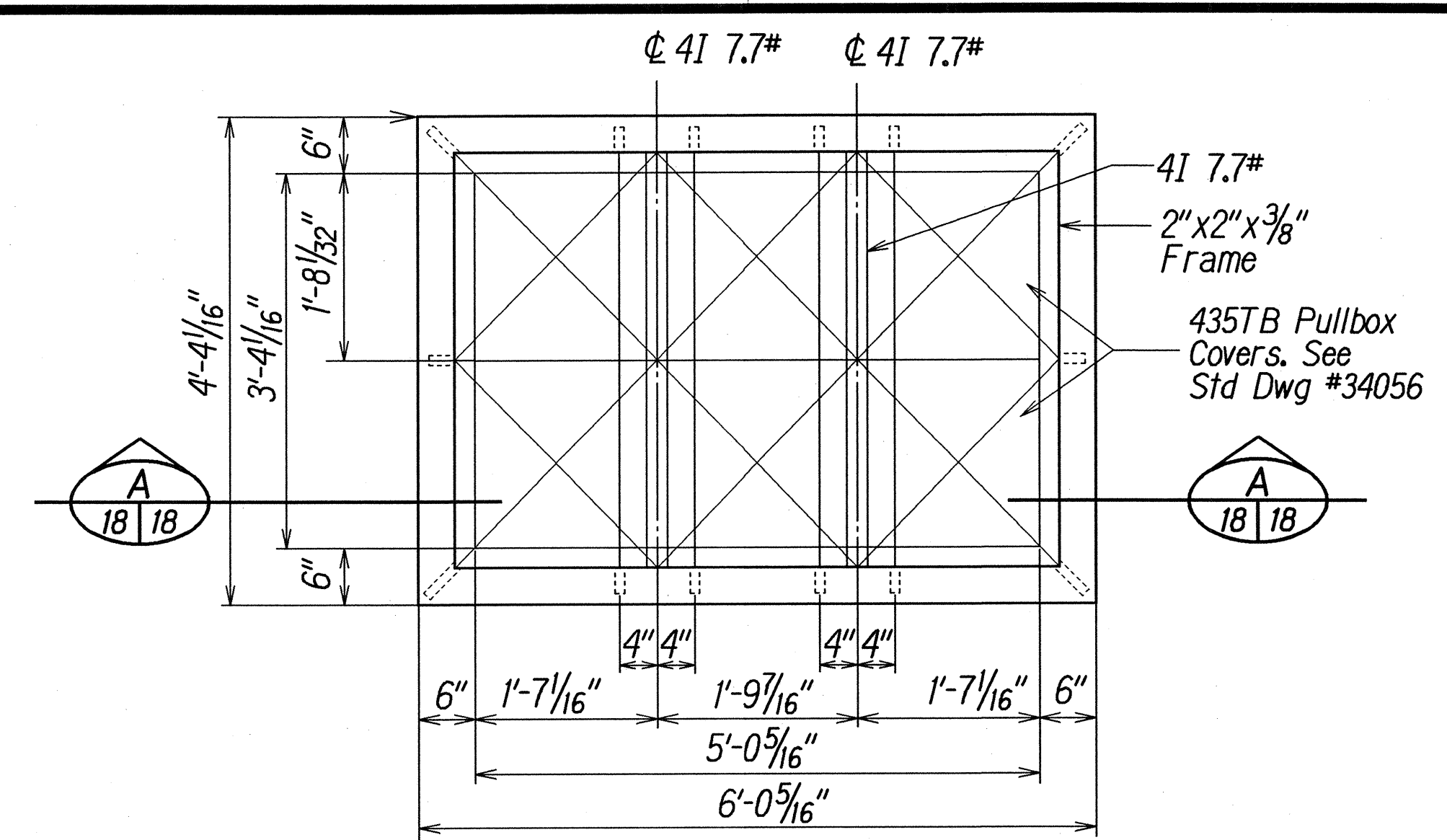
**DRAIN MANHOLE REMOVAL DETAIL**  
Not to Scale



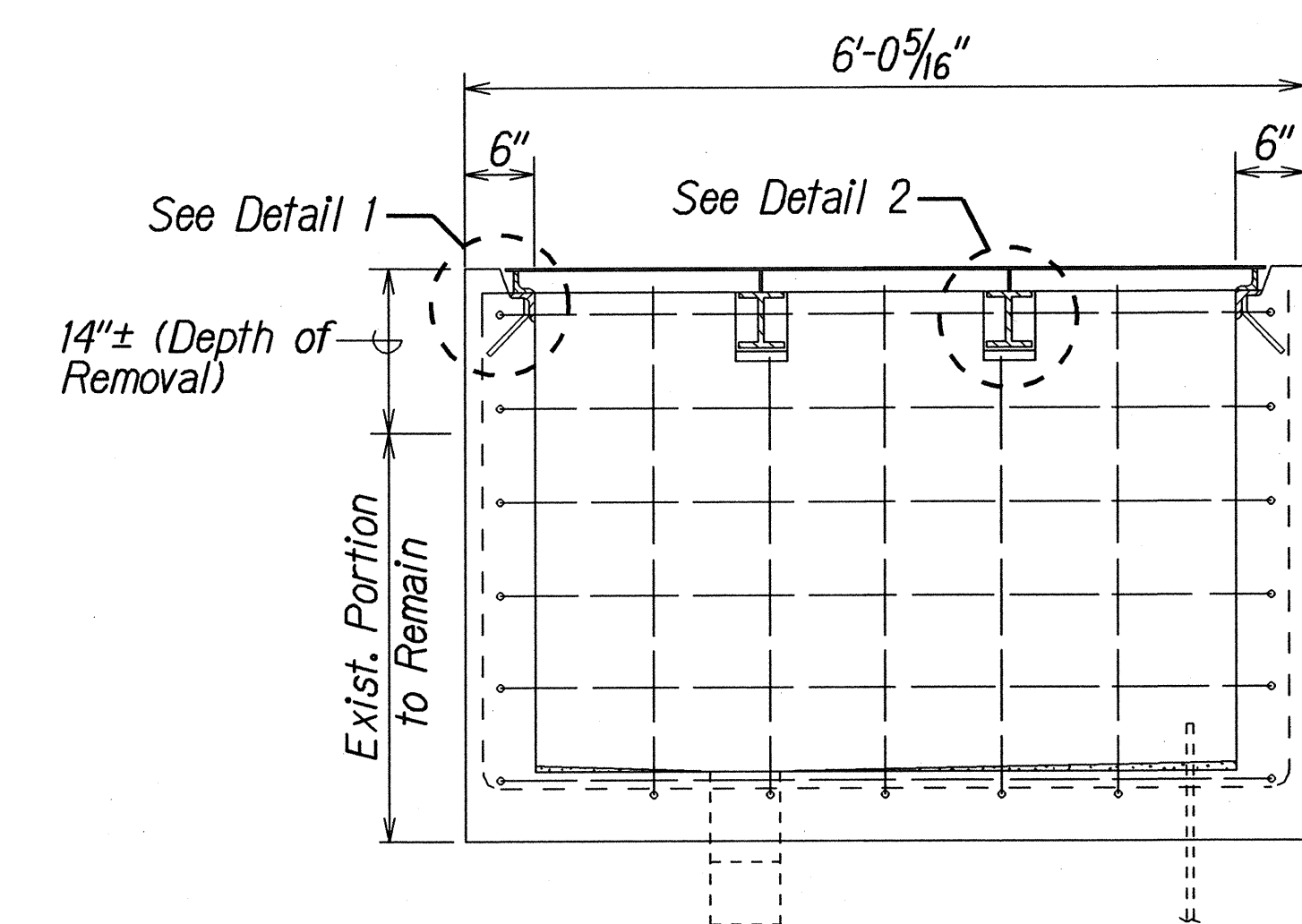
**DRAIN MANHOLE RECONSTRUCTION DETAIL**  
Not to Scale

**Notes:**

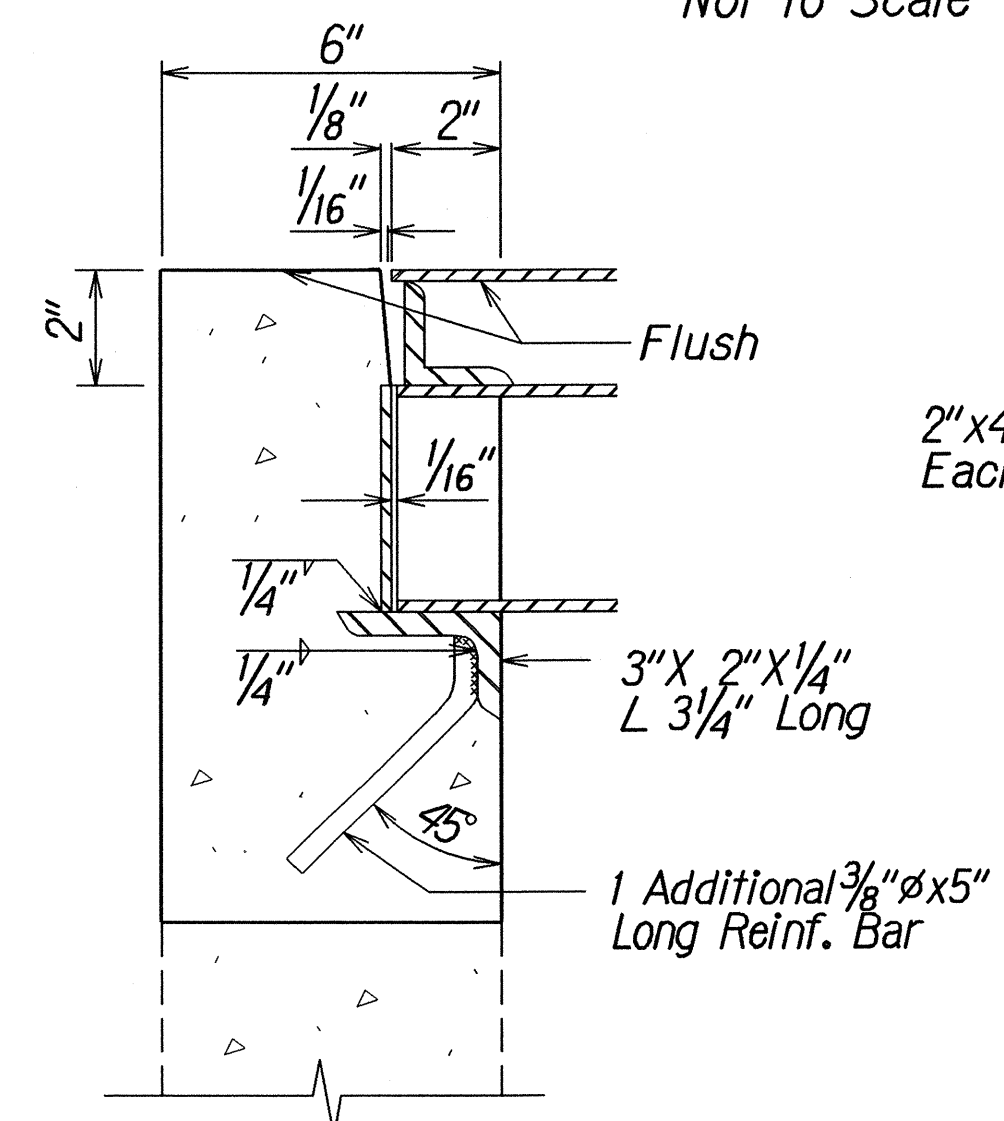
- Existing manhole frame and cover shall be salvaged and reinstalled after completion of drain manhole reconstruction.
- Top of reinstalled manhole frame and cover shall match the elevation of new sidewalk.
- All work appurtenant to drain manhole reconstruction shall be considered incidental to contract Item No. 604.4241 - Reconstruct Drain Manhole.
- See Standard Plan Sht. H-05 for details not shown.
- Concrete shall be Class A unless otherwise noted.



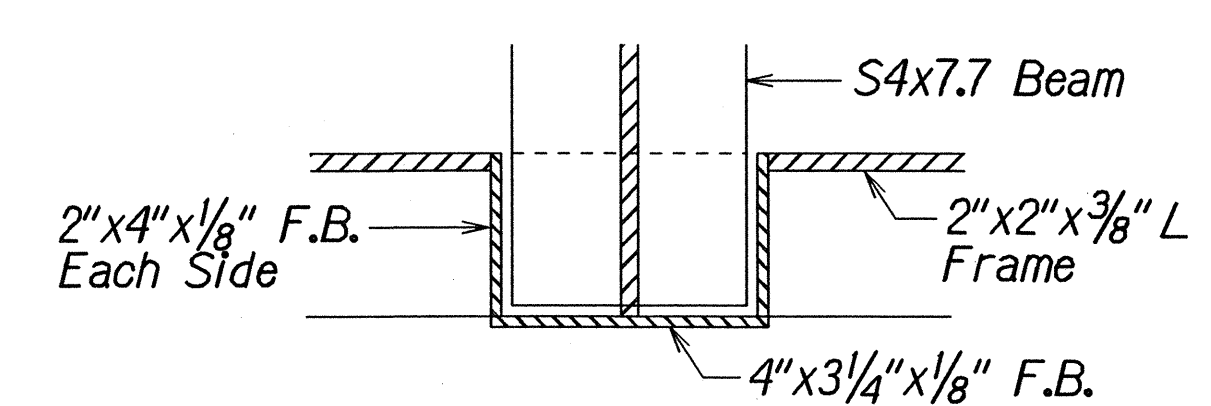
**TOP PLAN (Cast-in-Place)**  
Not to Scale



**SECTION A**  
Not to Scale

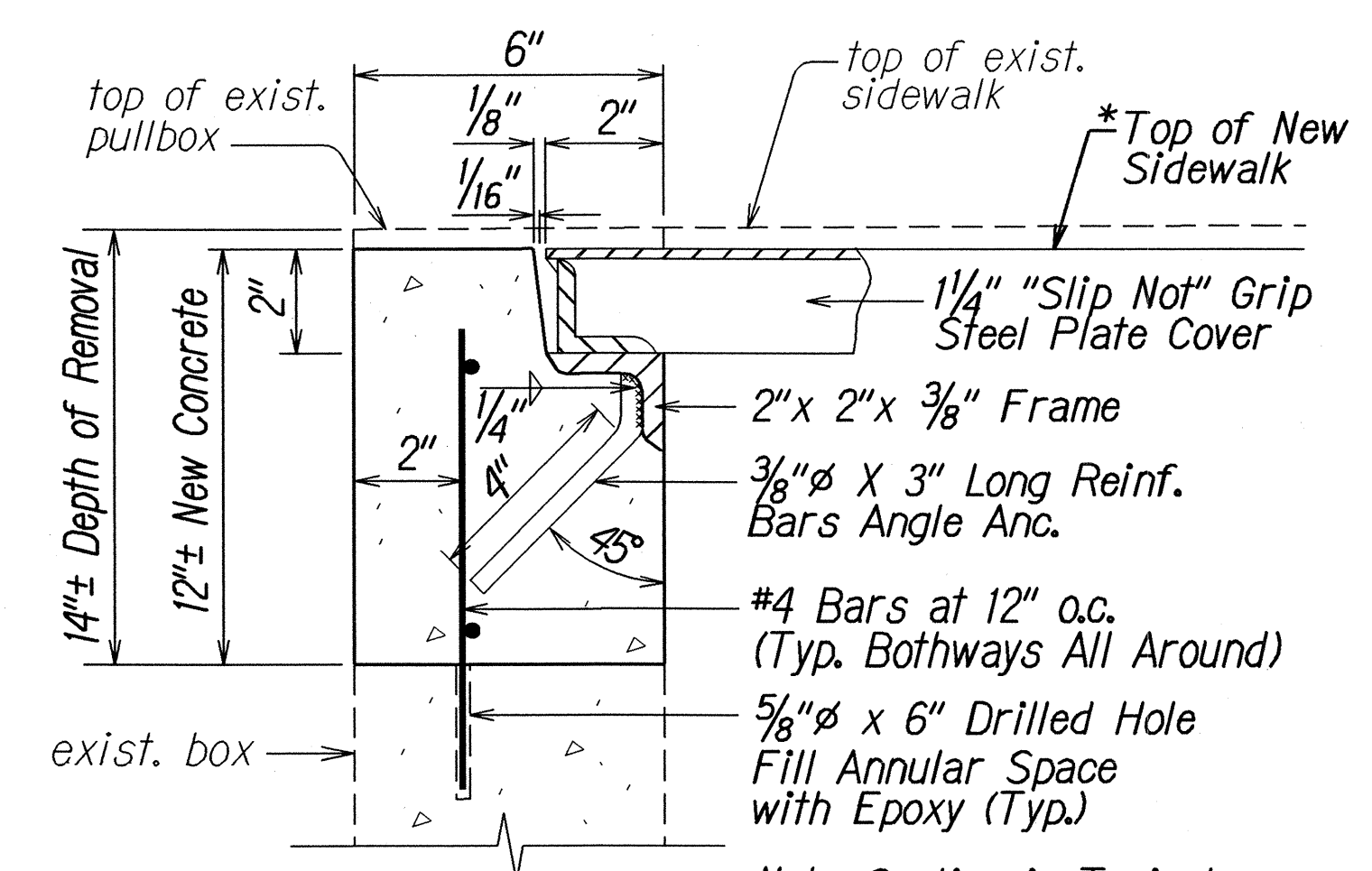


**SECTION B**  
Not to Scale

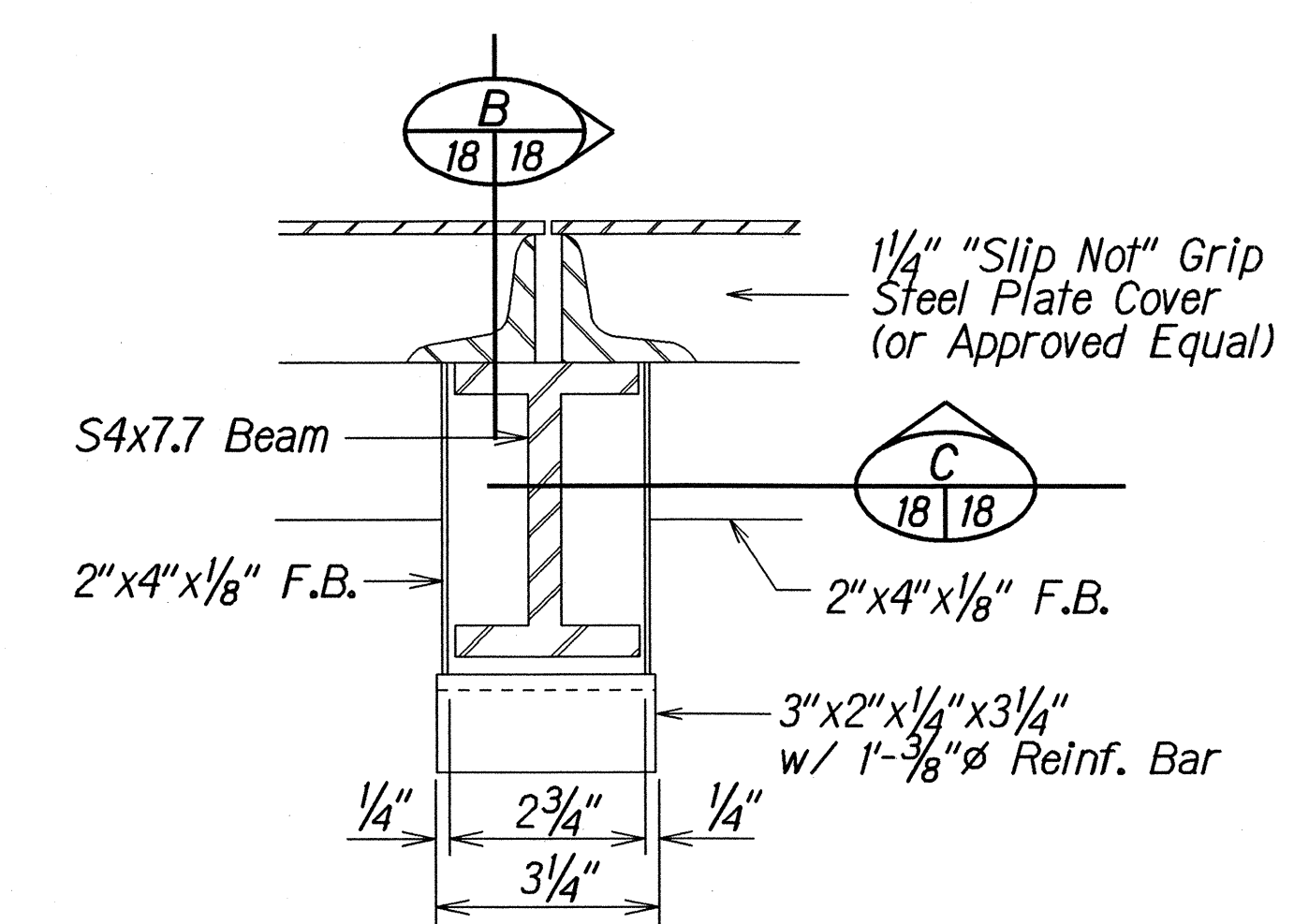


**SECTION C**  
Not to Scale

**TELEPHONE HANDHOLE TYPE #1**  
(3'-4 3/4" X 5'-1/8" Inside)



**DETAIL 1**  
Not to Scale



**DETAIL 2**  
Not to Scale

**Notes:**

- Top of reconstructed telephone handhole should match with the new finished grade of the adjacent sidewalk and/or pavement.
- Existing steel plate covers, frames, beams, flat bars, anchors and other structural sections shall be salvaged and reinstalled after completion of handhole reconstruction.
- All new structural steel shall be hot dip galvanized after fabrication.
- All work appurtenant to telephone handhole reconstruction shall be considered incidental to contract Item No. 604.4591 - Reconstruct Telephone Handhole.

STATE OF HAWAII  
DEPARTMENT OF TRANSPORTATION  
HIGHWAYS DIVISION

**TYPICAL SECTIONS**

KUHIO HIGHWAY  
Pedestrian Facilities and ADA Compliance  
at Various Locations  
Federal-Aid Project No. CMAQ-056-1(47)

Scale: As Shown      Date: March 2003

SHEET No. 4 OF 5 SHEETS

SURVEY PLOTTED BY	DATE
DRAWN BY	2/03
CHECKED BY	
DESIGNED BY	
NOTED BY	
QUANTITIES BY	
CHECKED BY	



