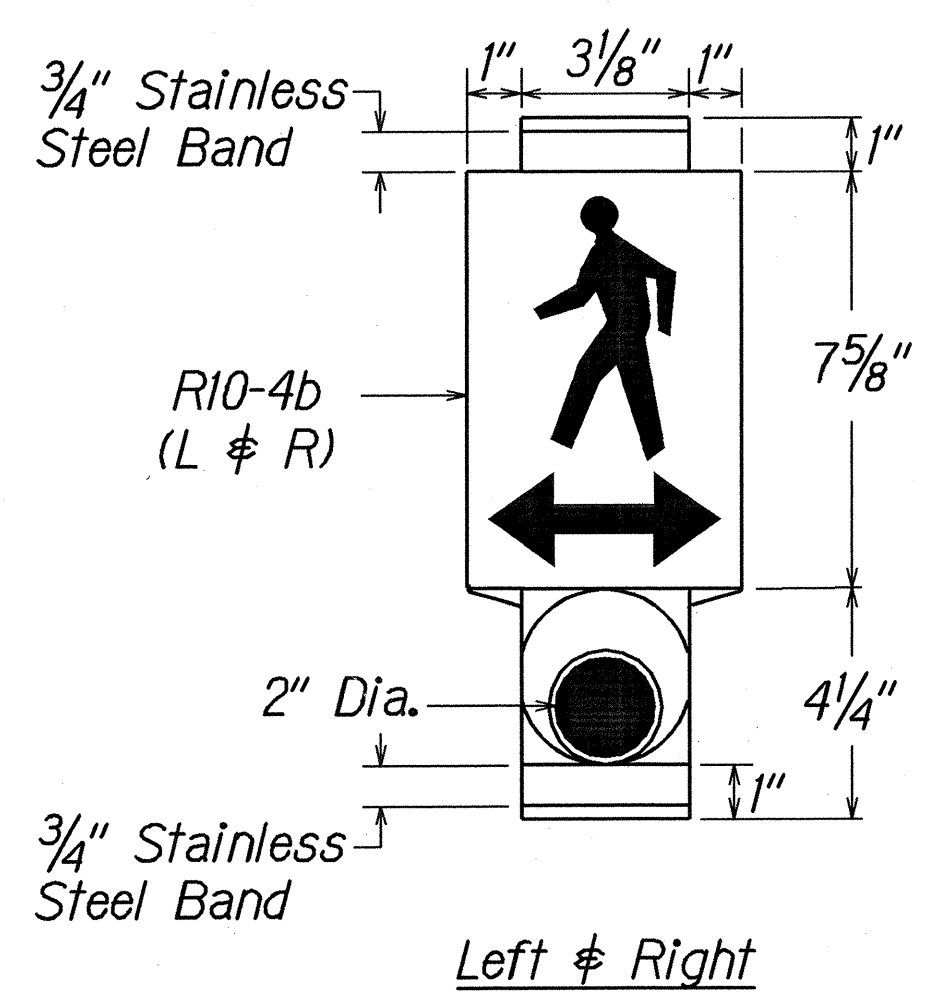
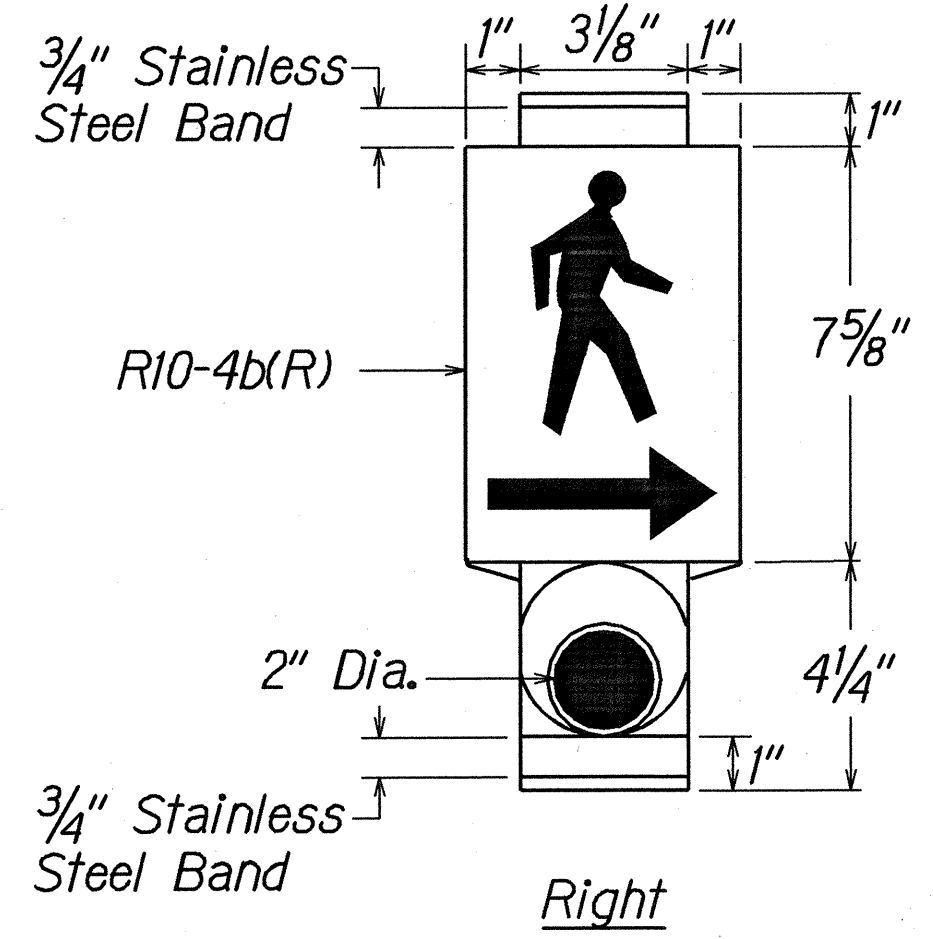
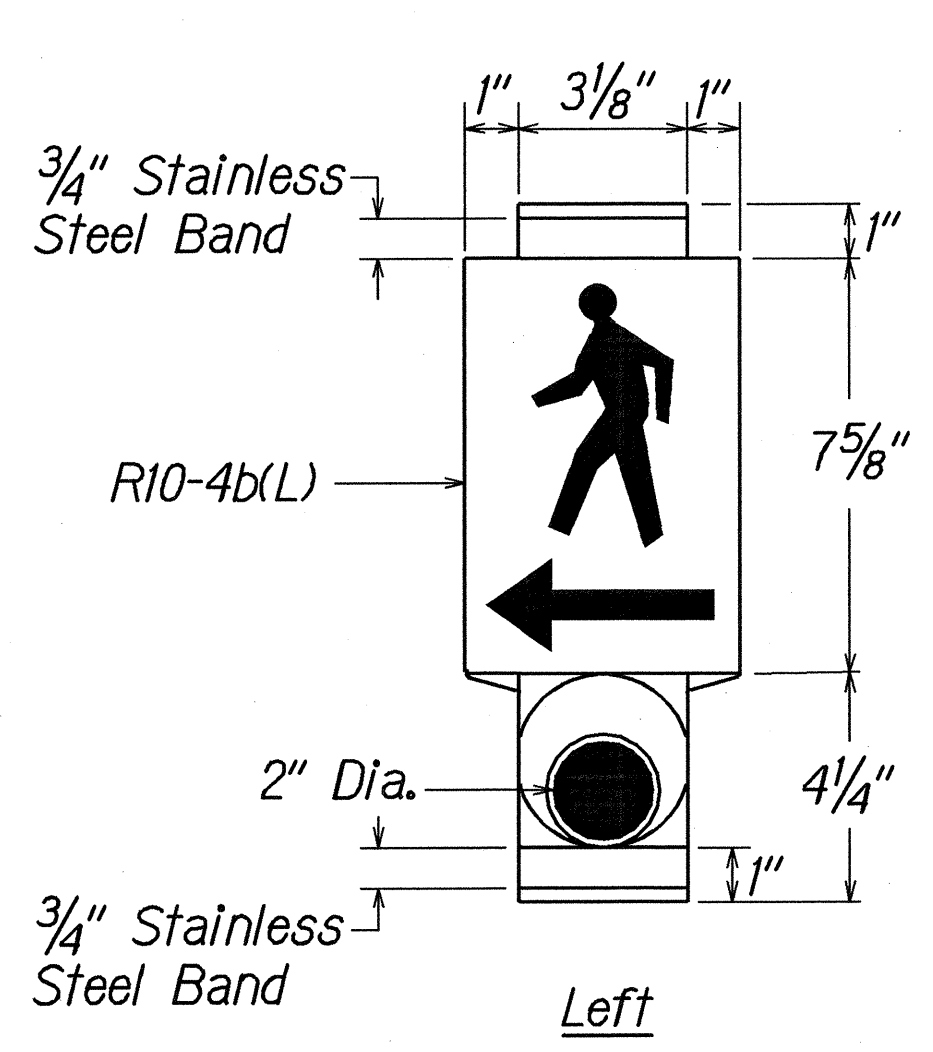


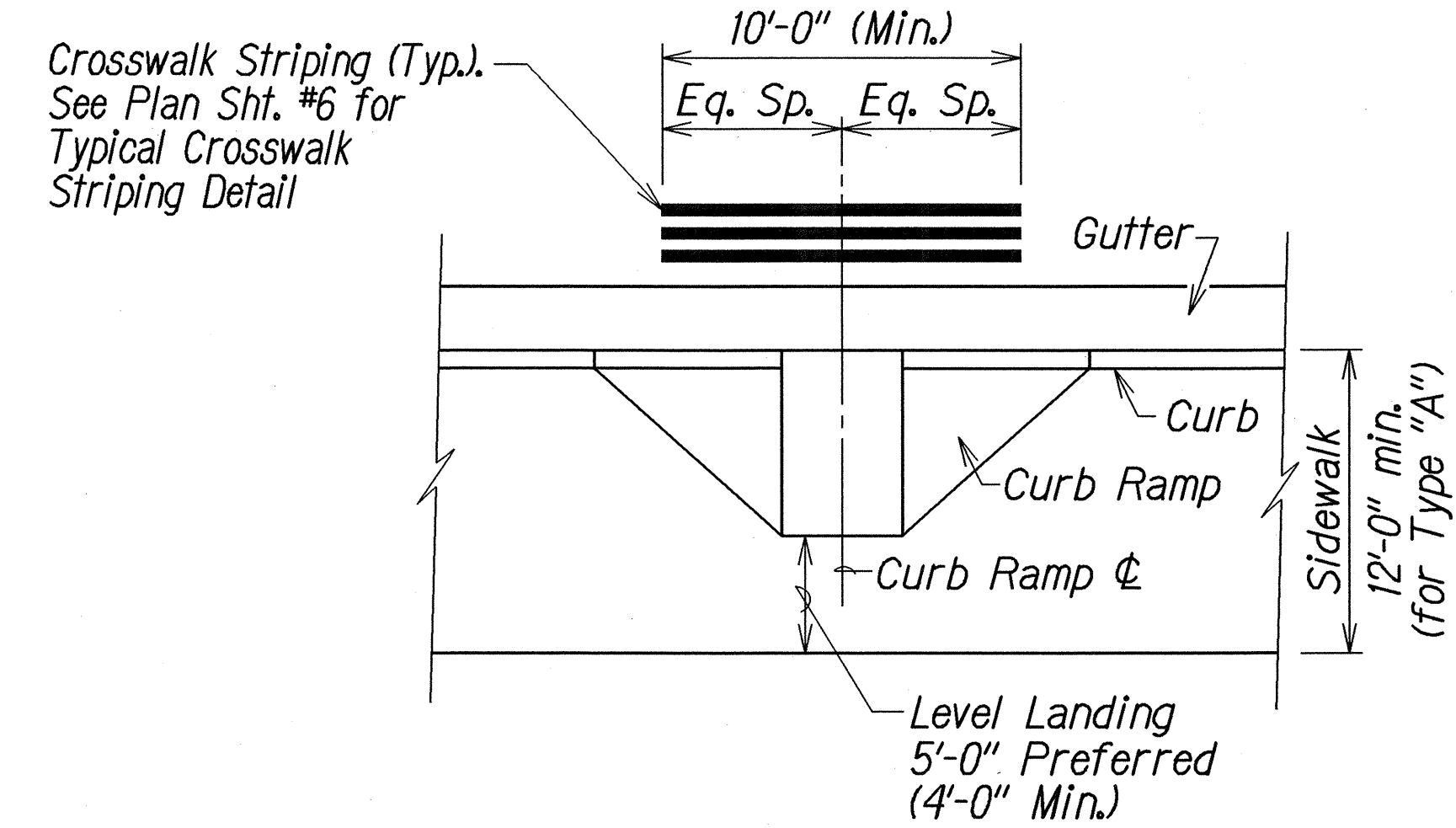
| FED. ROAD DIST. NO. | STATE | FEDERAL-AID PROJ. NO. | FISCAL YEAR | SHEET NO. | TOTAL SHEETS |
|---------------------|-------|-----------------------|-------------|-----------|--------------|
| HAWAII              | HAW.  | CMAQ-056-1(47)        | 2003        | 13        | 50           |



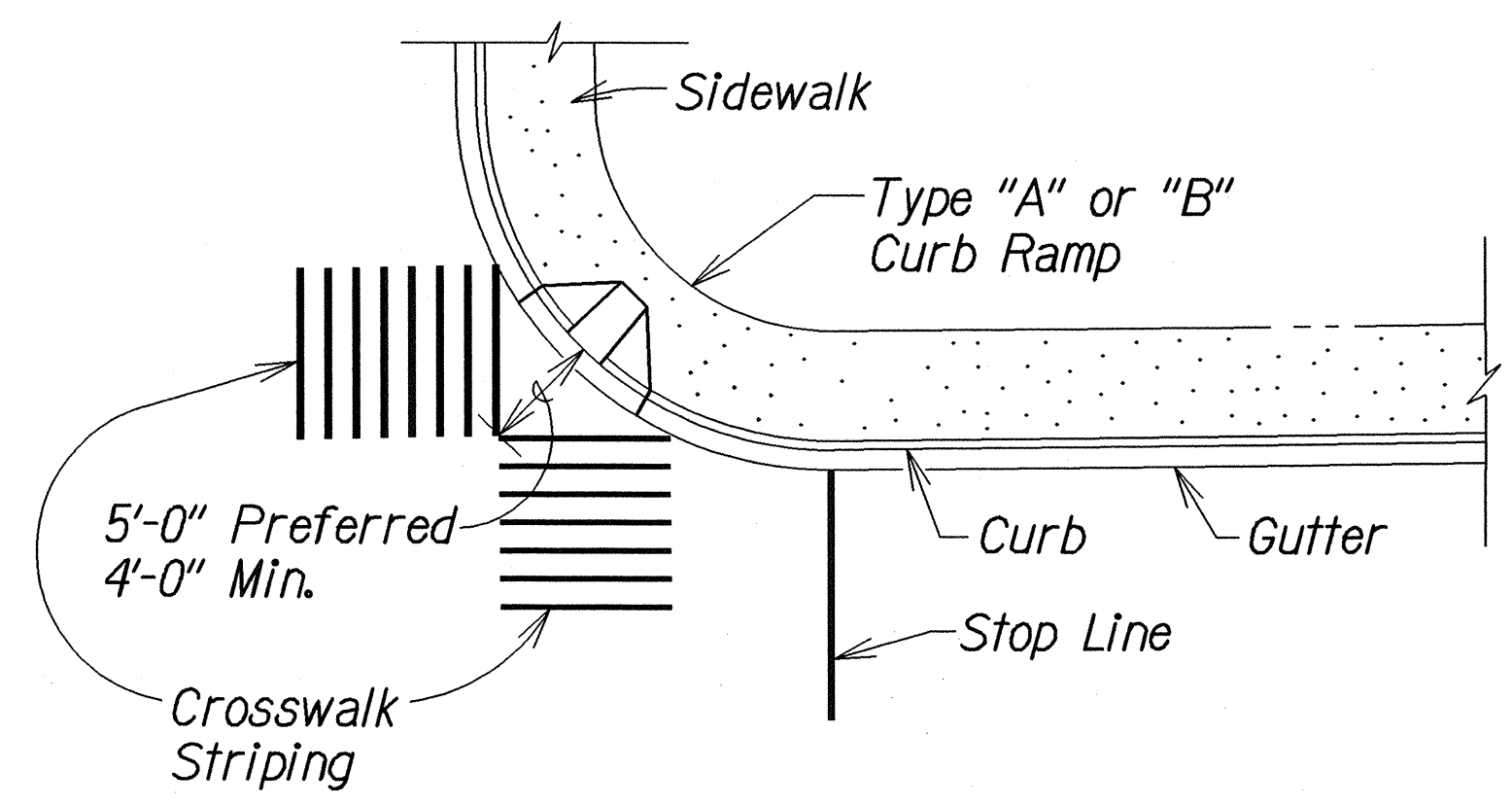
### PEDESTRIAN PUSH BUTTON WITH SIGN

Man, Arrow & Push Button - White  
Background - Black

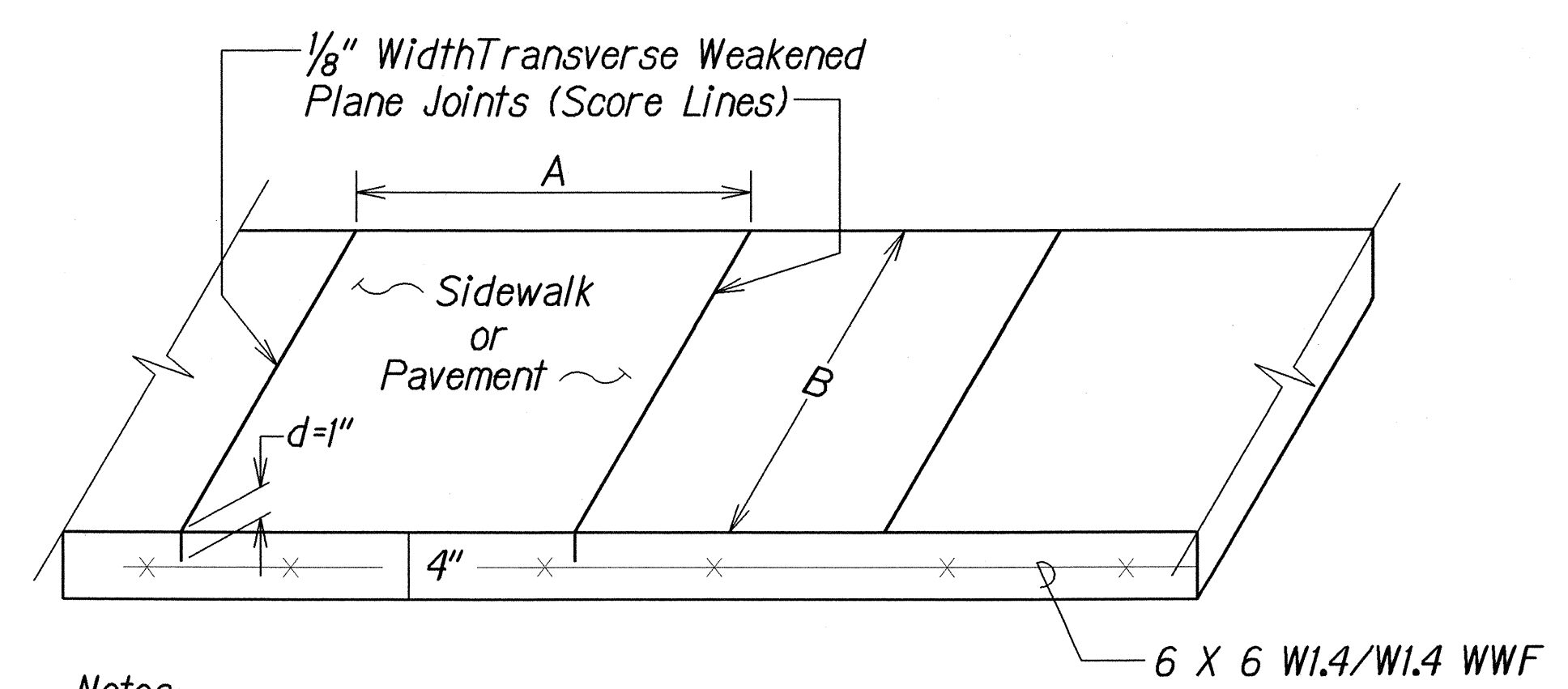
**NOTE:**  
Arrowhead to be installed  
in proper direction.



### TYPICAL CROSSWALK STRIPING AT CURB RAMP



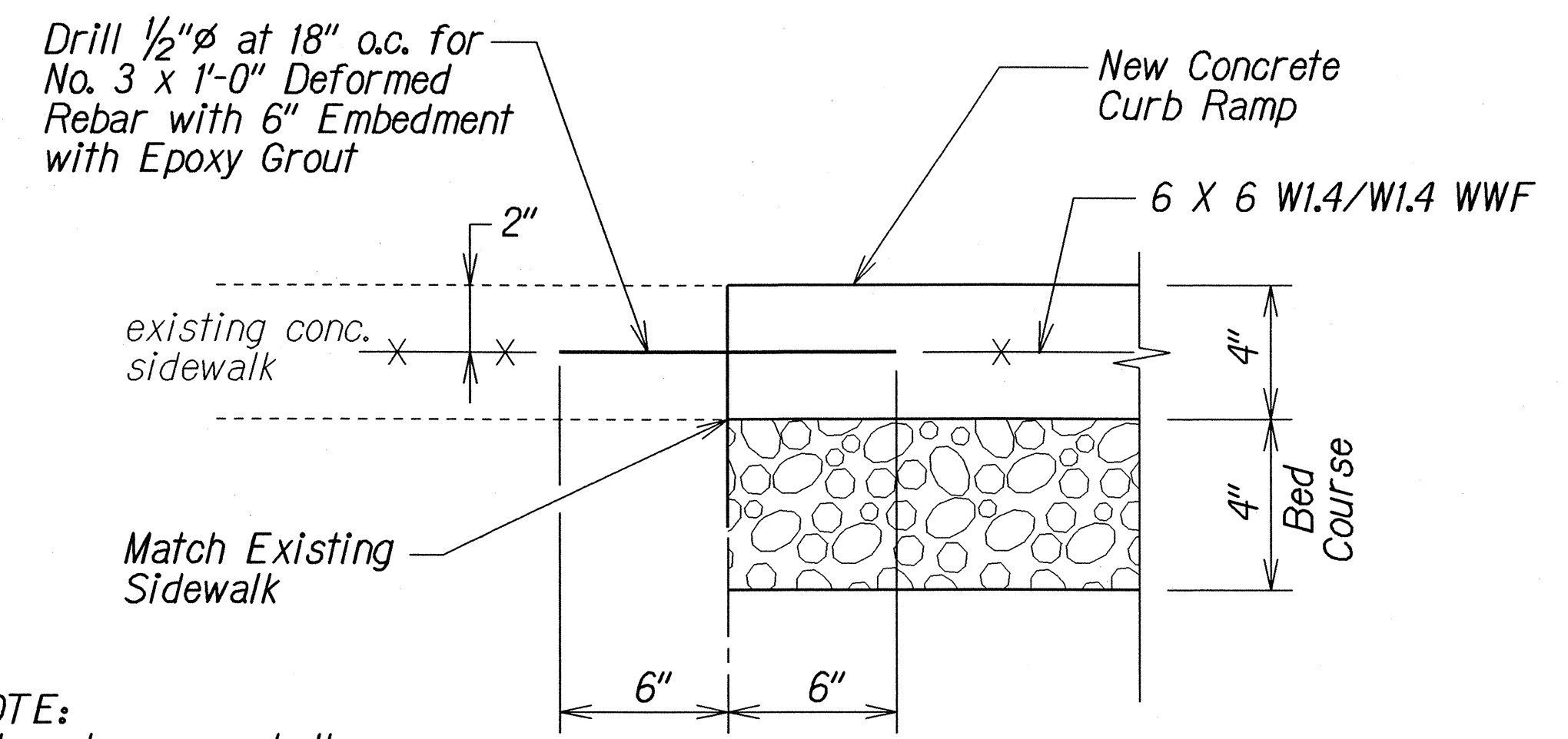
### TYPICAL CROSSWALK STRIPING AT DIAGONAL CURB RAMP



- Notes:**
1. A = 5' if B ≤ 7'.
  2. For other joint requirements, see Section 606 of the Special Provisions.

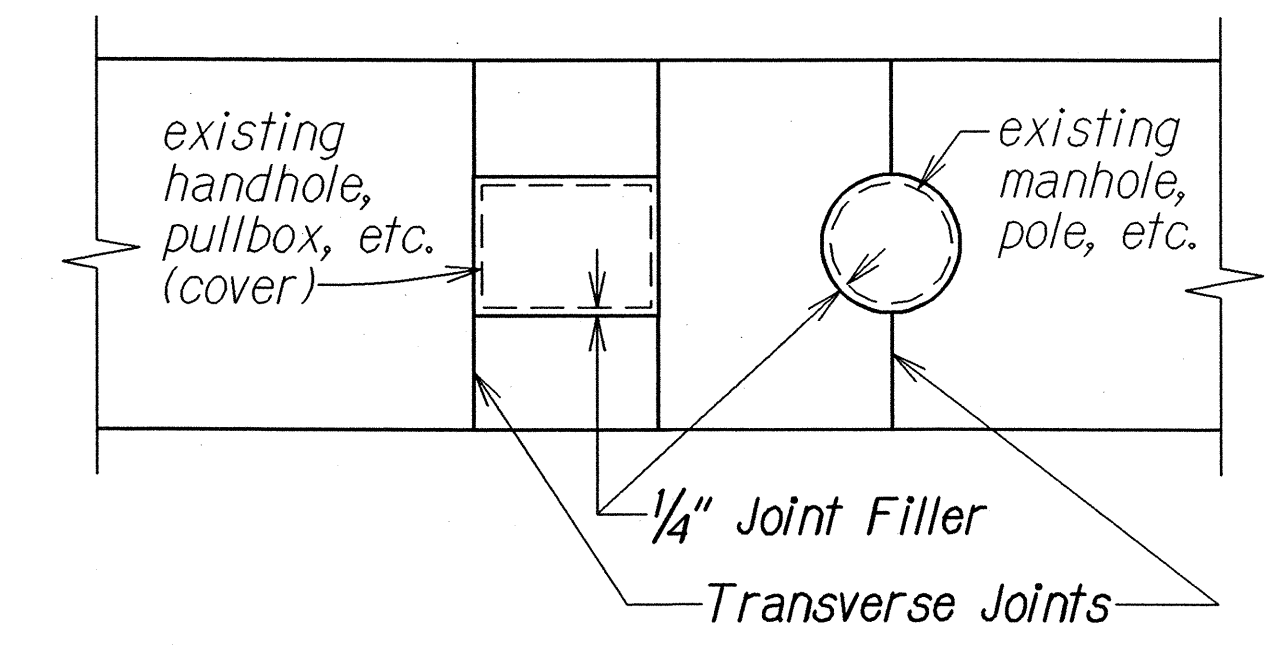
### SIDEWALK SCORE LINE DETAIL

Not To Scale



**NOTE:**  
All curb ramps shall  
be reinforced.

### TYPICAL CONSTRUCTION JOINT AT EXISTING SIDEWALK



### SIDEWALK ISOLATION JOINT DETAIL

Not To Scale

STATE OF HAWAII  
DEPARTMENT OF TRANSPORTATION  
HIGHWAYS DIVISION

**MISCELLANEOUS DETAILS**  
**KUHIO HIGHWAY**  
Pedestrian Facilities and ADA Compliance  
at Various Locations  
Federal-Aid Project No. CMAQ-056-1(47)  
Not to Scale Date: March 2003

SHEET No. 6 OF 7 SHEETS

|                   |      |
|-------------------|------|
| SURVEY PLOTTED BY | DATE |
| DRAWN BY          | 2/03 |
| DESIGNED BY       |      |
| CHECKED BY        |      |
| NOTE BOOK         |      |
| REVISION          |      |
| QUANTITIES BY     |      |
| CHECKED BY        |      |