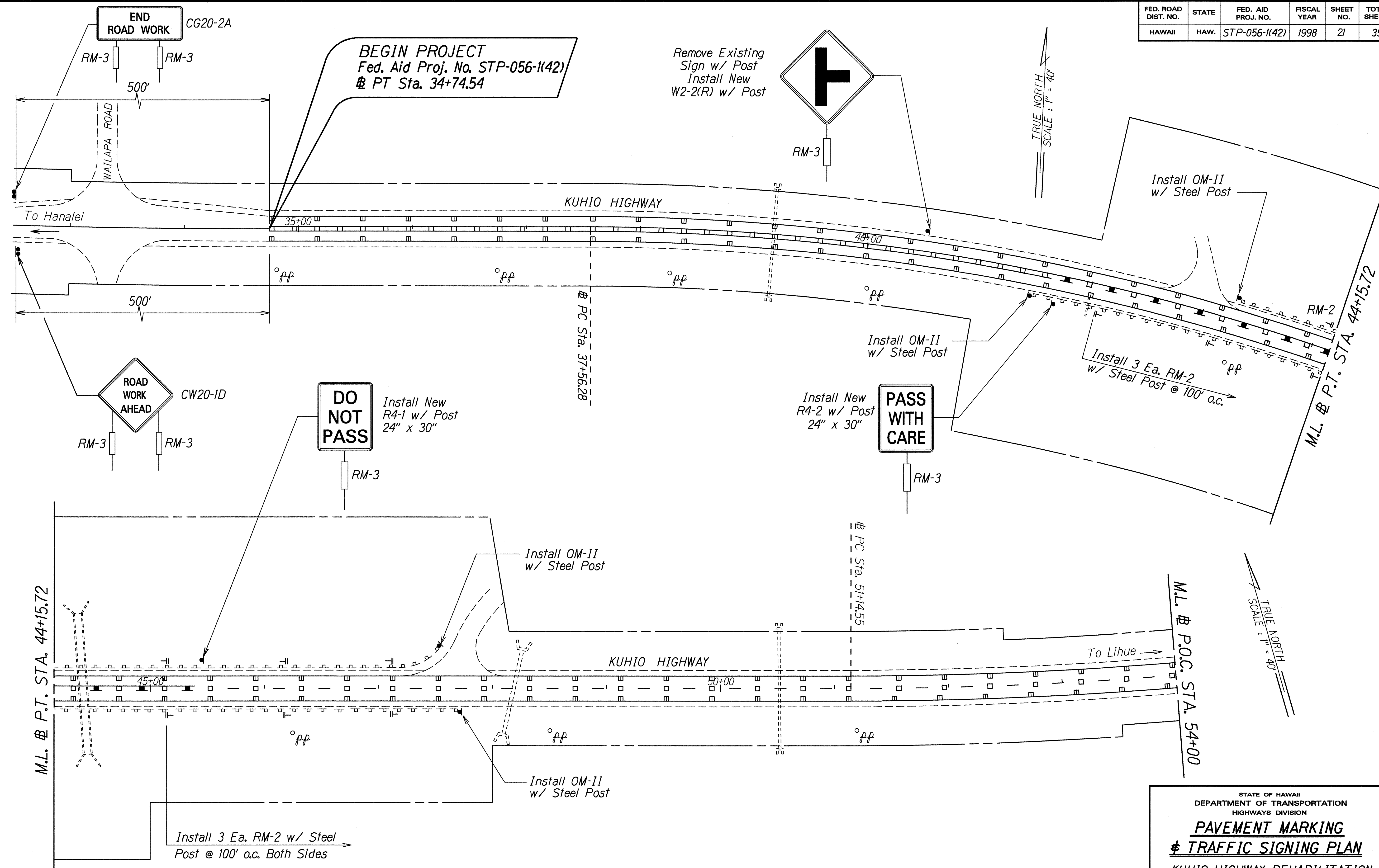


FED. ROAD DIST. NO.	STATE	FED. AID PROJ. NO.	FISCAL YEAR	SHEET NO.	TOTAL SHEETS
HAWAII	HAW.	STP-056-1(42)	1998	21	35



ORIGINAL PLAN	DATE
SURVEY PLOTTED BY	3/29/98
DRAWN BY	B. ACOB
NOTES BOOK	
REVISIONS	
DESIGNED BY	
CHECKED BY	

STATE OF HAWAII
DEPARTMENT OF TRANSPORTATION
HIGHWAYS DIVISION

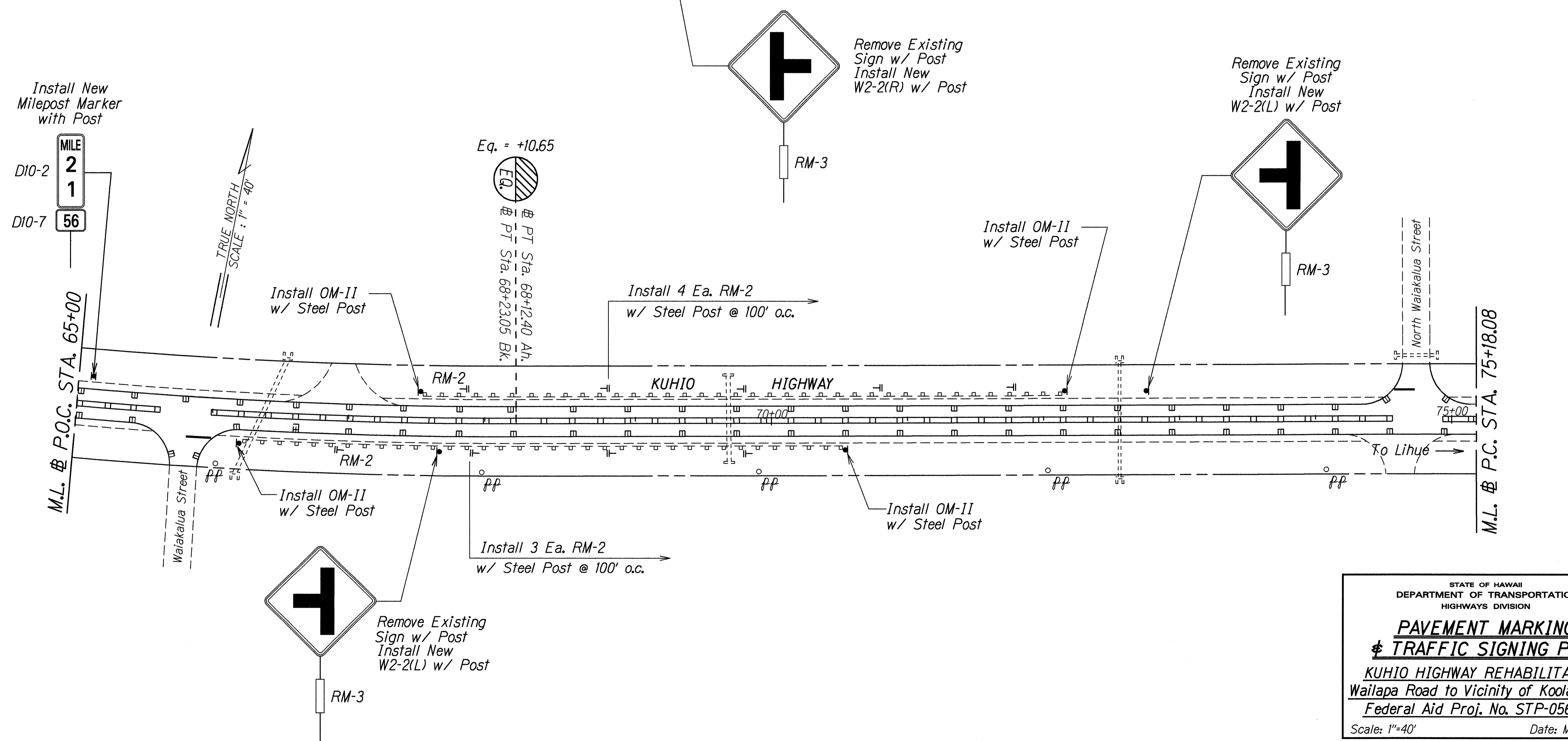
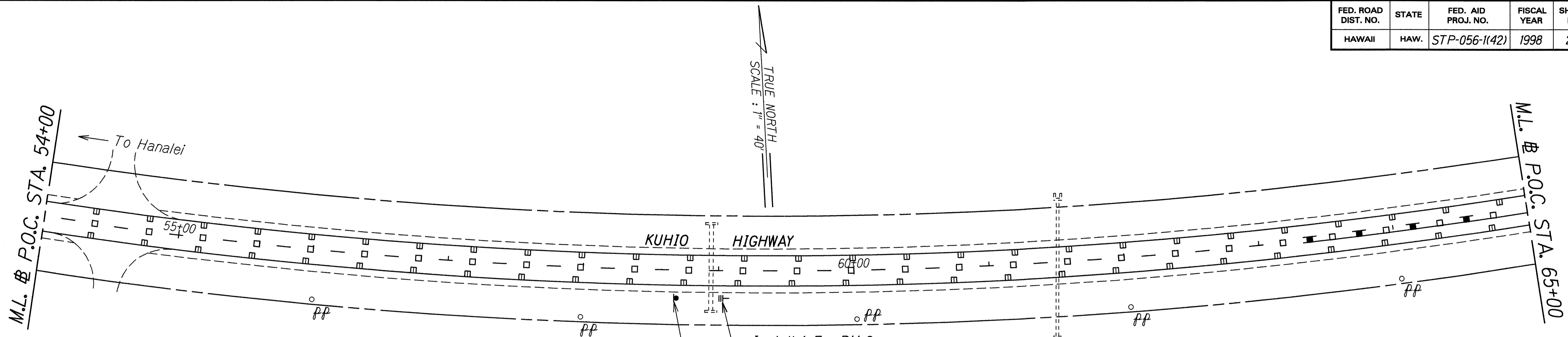
PAVEMENT MARKING
TRAFFIC SIGNING PLAN

KUHIO HIGHWAY REHABILITATION
Wailapa Road to Vicinity of Koolau Road
Federal Aid Proj. No. STP-056-1(42)

Scale: 1"=40' Date: May, 1998

SHEET No. 1 OF 12 SHEETS

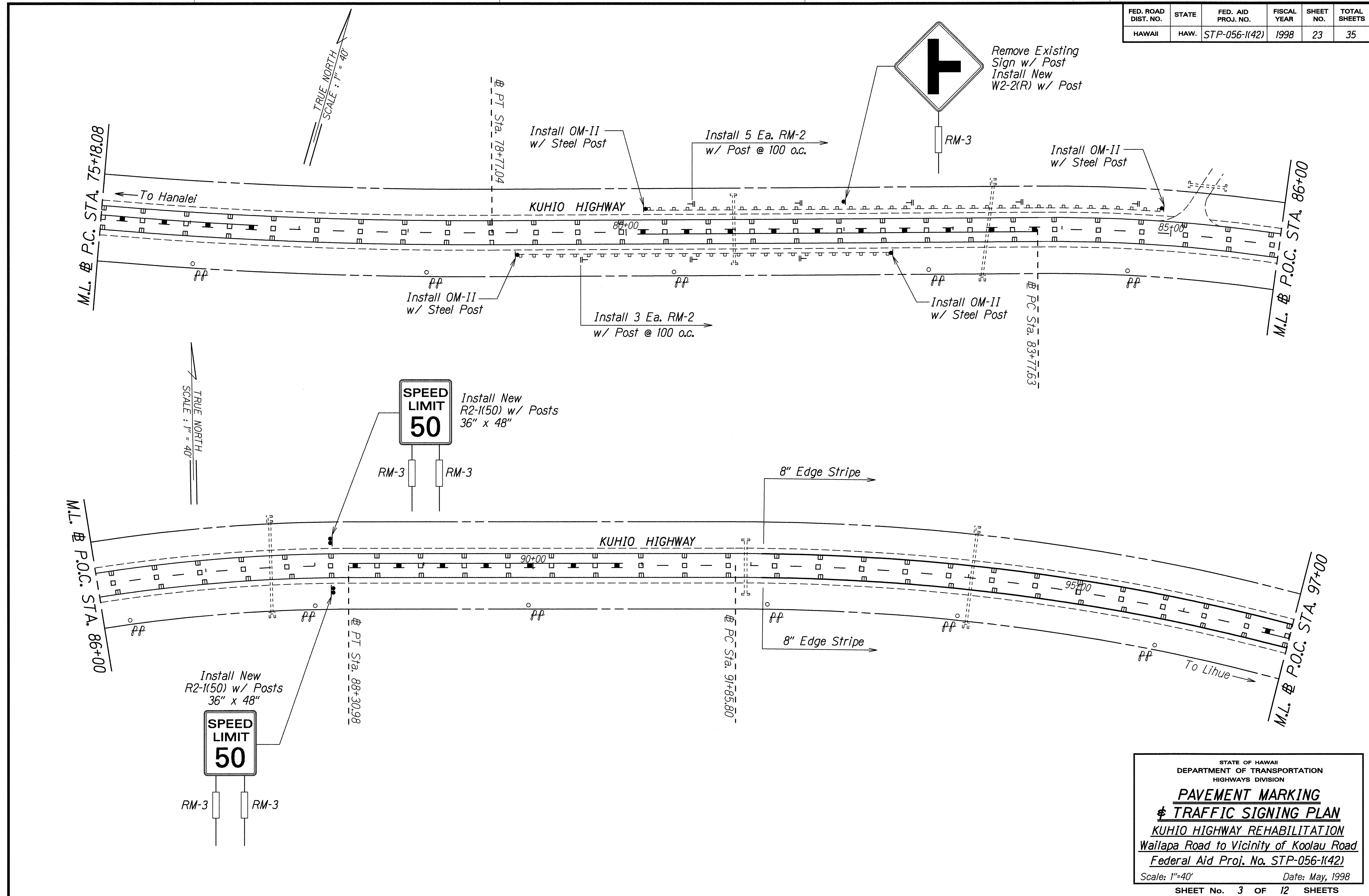
FED. ROAD DIST. NO.	STATE	FED. AID PROJ. NO.	FISCAL YEAR	SHEET NO.	TOTAL SHEETS
HAWAII	HAW.	STP-056-1(42)	1998	22	35



SURVEY PLOTTED BY: DATE: 3-05-98
 DRAWN BY: B. Aob
 CHECKED BY: B. Aob
 ORIGINAL PLAN
 NOTE BOOK
 FILED IN: 10/10/98
 CHECKED BY: B. Aob

STATE OF HAWAII
 DEPARTMENT OF TRANSPORTATION
 HIGHWAYS DIVISION
PAVEMENT MARKING
TRAFFIC SIGNING PLAN
 KUHIO HIGHWAY REHABILITATION
 Waiakalua Road to Vicinity of Koolau Road
 Federal Aid Proj. No. STP-056-1(42)
 Scale: 1"=40' Date: May, 1998
 SHEET No. 2 OF 12 SHEETS

FED. ROAD DIST. NO.	STATE	FED. AID PROJ. NO.	FISCAL YEAR	SHEET NO.	TOTAL SHEETS
HAWAII	HAW.	STP-056-1(42)	1998	23	35



ORIGINAL PLAN	DATE
SURVEY PLANNED BY	3/22/98
DRAWN BY	B. A. COO
DESIGNED BY	R. A. COO
CHECKED BY	

STATE OF HAWAII
DEPARTMENT OF TRANSPORTATION
HIGHWAYS DIVISION

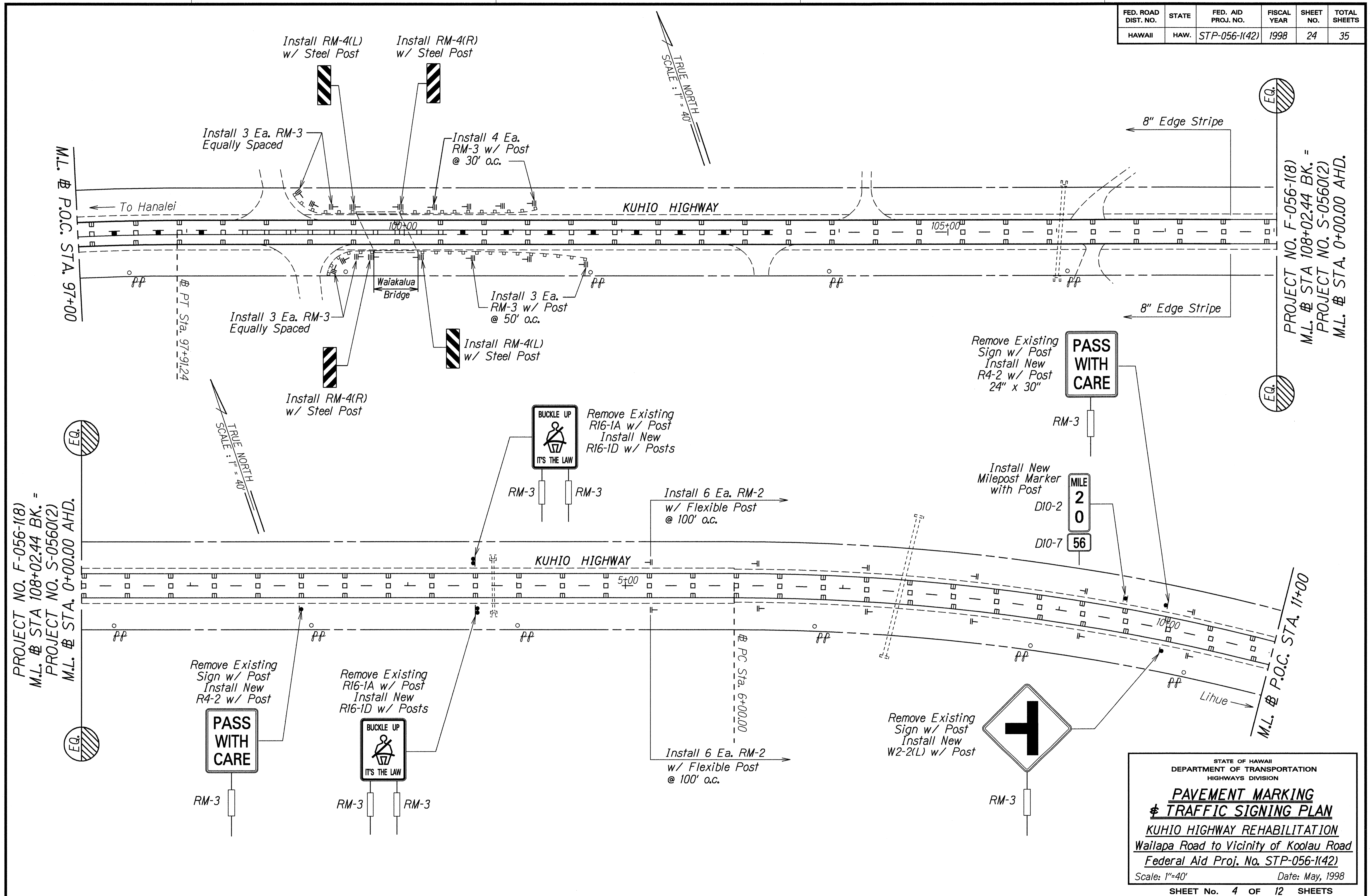
PAVEMENT MARKING
TRAFFIC SIGNING PLAN

KUHIO HIGHWAY REHABILITATION
Wailapa Road to Vicinity of Koolau Road
Federal Aid Proj. No. STP-056-1(42)

Scale: 1"=40' Date: May, 1998

SHEET No. 3 OF 12 SHEETS

FED. ROAD DIST. NO.	STATE	FED. AID PROJ. NO.	FISCAL YEAR	SHEET NO.	TOTAL SHEETS
HAWAII	HAW.	STP-056-1(42)	1998	24	35



PROJECT NO. F-056-1(8)
M.L. # STA 108+02.44 BK. =
PROJECT NO. S-0560(2)
M.L. # STA. 0+00.00 AHD.

PROJECT NO. F-056-1(8)
M.L. # STA 108+02.44 BK. =
PROJECT NO. S-0560(2)
M.L. # STA. 0+00.00 AHD.

ORIGINAL PLAN	DATE
SURVEY PLOTTED BY	3-09-98
DRAWN BY	EL. ABB
DESIGNED BY	EL. ABB
CHECKED BY	

STATE OF HAWAII
DEPARTMENT OF TRANSPORTATION
HIGHWAYS DIVISION

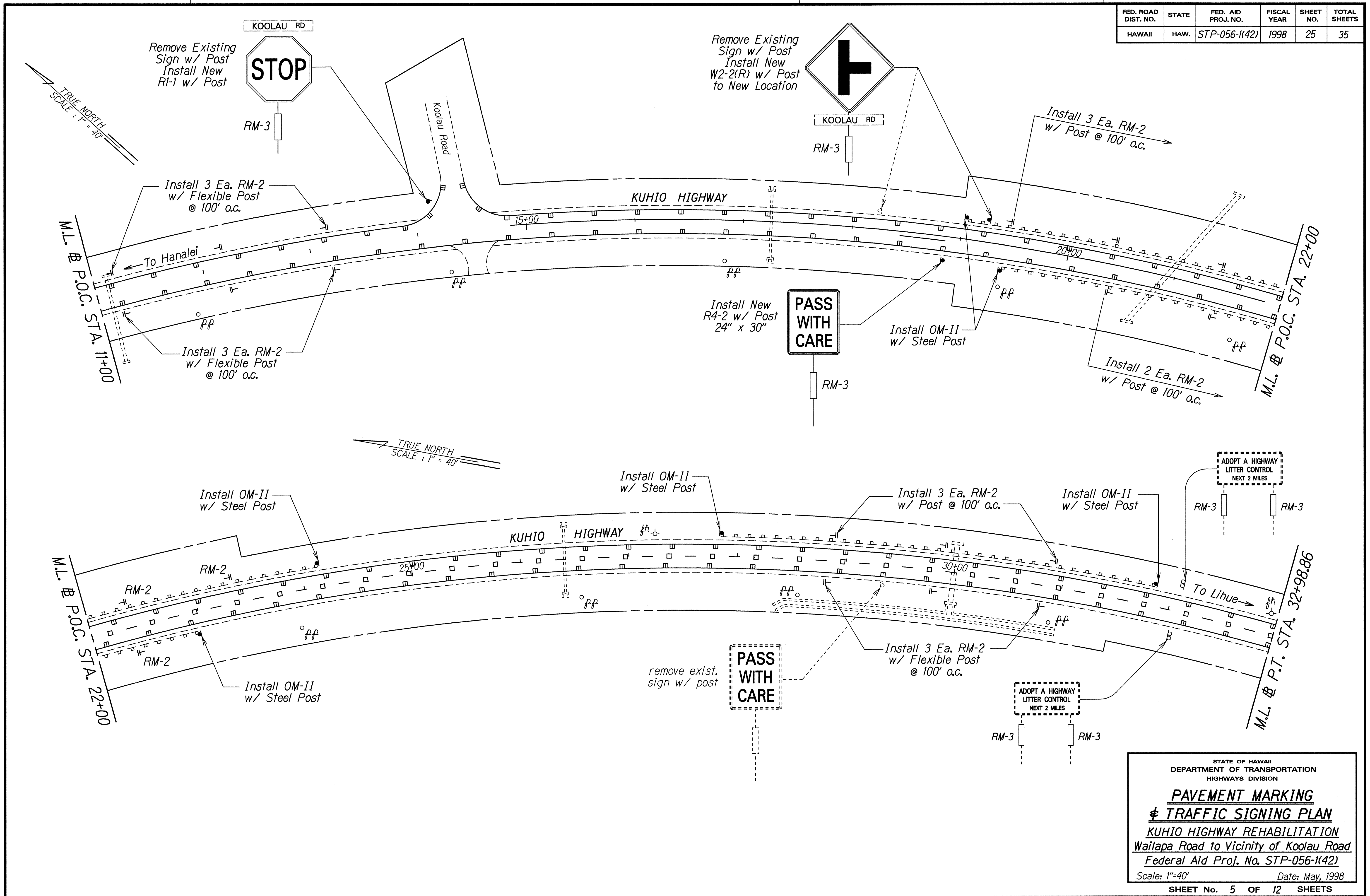
**PAVEMENT MARKING
& TRAFFIC SIGNING PLAN**

KUHIO HIGHWAY REHABILITATION
Wailapa Road to Vicinity of Koolau Road
Federal Aid Proj. No. STP-056-1(42)

Scale: 1"=40' Date: May, 1998

SHEET No. 4 OF 12 SHEETS

FED. ROAD DIST. NO.	STATE	FED. AID PROJ. NO.	FISCAL YEAR	SHEET NO.	TOTAL SHEETS
HAWAII	HAW.	STP-056-1(42)	1998	25	35



ORIGINAL PLAN	DATE
SURVEY PLOTTED BY	3-09-98
DRAWN BY	B. A. A.
TRACED BY	B. A. A.
NOTED BY	B. A. A.
DESIGNED BY	B. A. A.
CHECKED BY	B. A. A.

STATE OF HAWAII
DEPARTMENT OF TRANSPORTATION
HIGHWAYS DIVISION

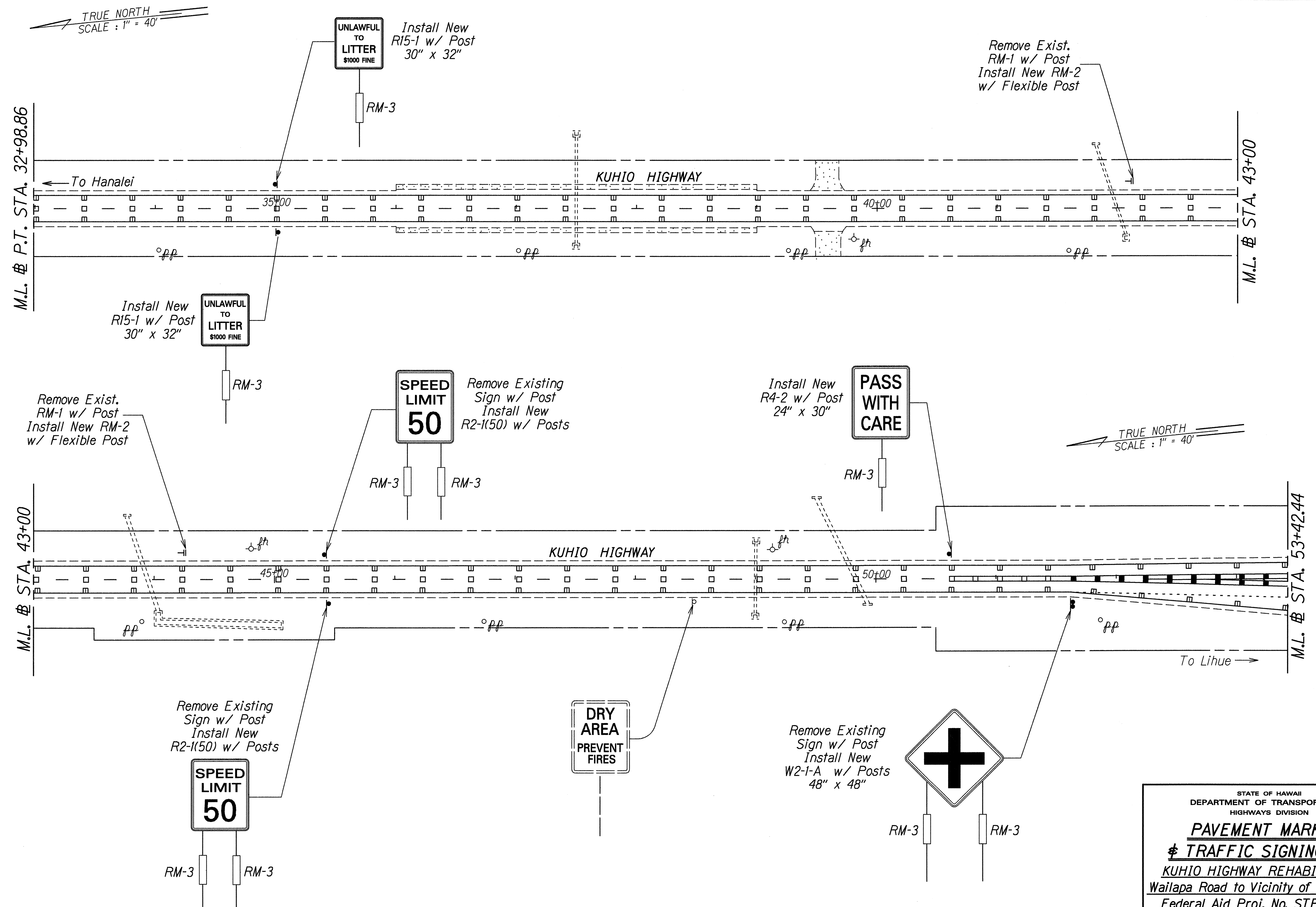
**PAVEMENT MARKING
& TRAFFIC SIGNING PLAN**

KUHIO HIGHWAY REHABILITATION
Wailapa Road to Vicinity of Koolau Road
Federal Aid Proj. No. STP-056-1(42)

Scale: 1"=40' Date: May, 1998

SHEET No. 5 OF 12 SHEETS

FED. ROAD DIST. NO.	STATE	FED. AID PROJ. NO.	FISCAL YEAR	SHEET NO.	TOTAL SHEETS
HAWAII	HAW.	STP-056-1(42)	1998	26	35



ORIGINAL PLAN	DATE
SURVEY PLOTTED BY	3/09/98
DRAWN BY	
TRACED BY	
NOTE BOOK	
REDLINED	
QUANTITIES BY	
CHECKED BY	

STATE OF HAWAII
DEPARTMENT OF TRANSPORTATION
HIGHWAYS DIVISION

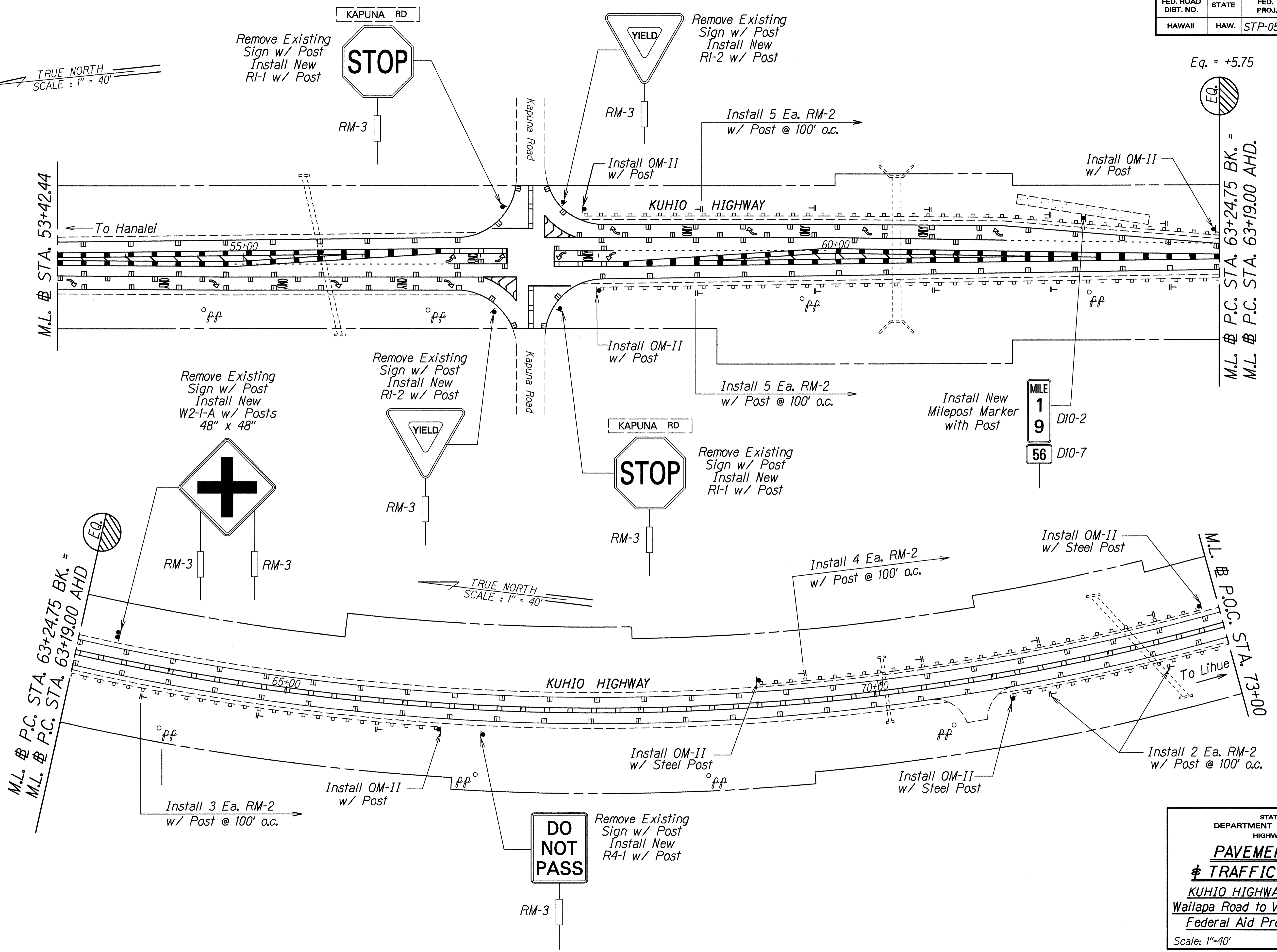
PAVEMENT MARKING
TRAFFIC SIGNING PLAN

KUHIO HIGHWAY REHABILITATION
Wailapa Road to Vicinity of Koolau Road
Federal Aid Proj. No. STP-056-1(42)

Scale: 1"=40' Date: May, 1998

FED. ROAD DIST. NO.	STATE	FED. AID PROJ. NO.	FISCAL YEAR	SHEET NO.	TOTAL SHEETS
HAWAII	HAW.	STP-056-1(42)	1998	27	35

TRUE NORTH
SCALE : 1" = 40'



ORIGINAL PLAN	DATE
SURVEY PLOTTED BY	3-09-98
DRAWN BY	H. Aoki
DESIGNED BY	B. Aoki
CHECKED BY	
NOTE BOOK	
FILED	
DATE	

STATE OF HAWAII
DEPARTMENT OF TRANSPORTATION
HIGHWAYS DIVISION

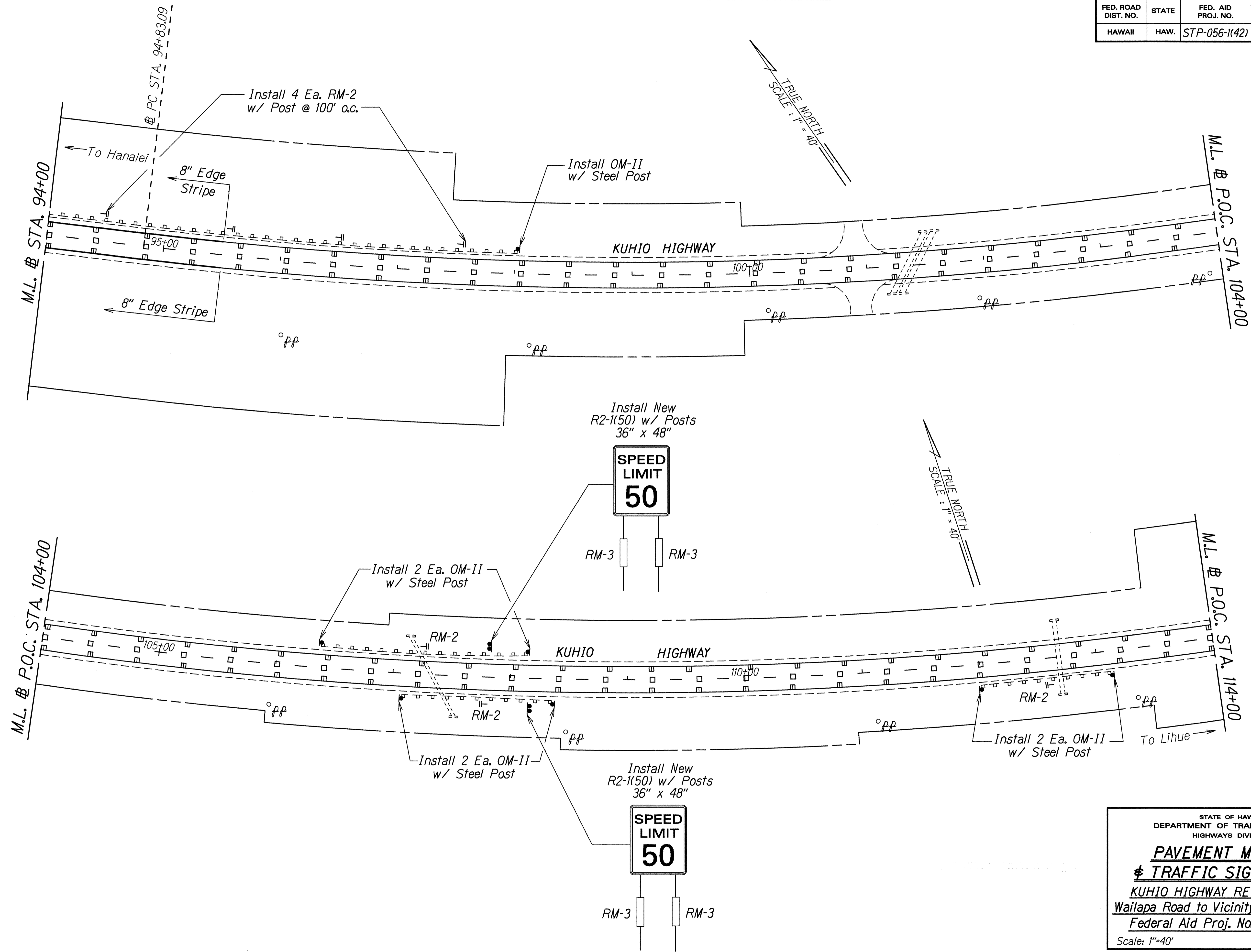
**PAVEMENT MARKING
& TRAFFIC SIGNING PLAN**

KUHIO HIGHWAY REHABILITATION
Wailapa Road to Vicinity of Koolau Road
Federal Aid Proj. No. STP-056-1(42)

Scale: 1"=40' Date: May, 1998

SHEET No. 7 OF 12 SHEETS

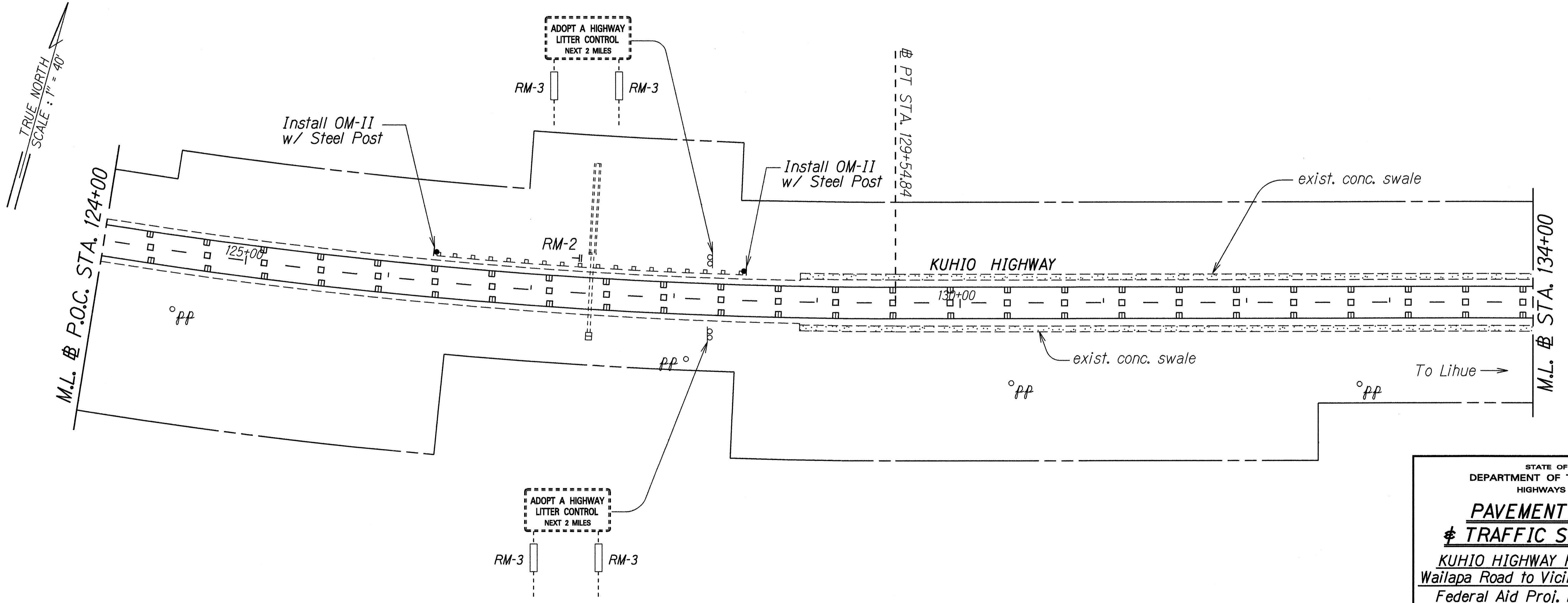
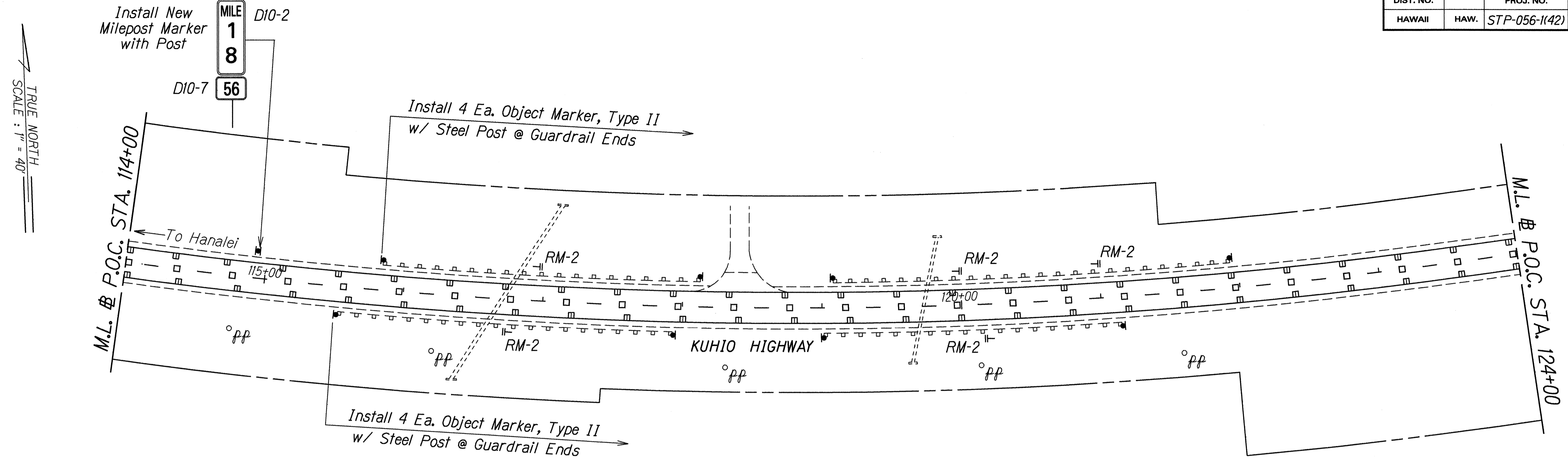
FED. ROAD DIST. NO.	STATE	FED. AID PROJ. NO.	FISCAL YEAR	SHEET NO.	TOTAL SHEETS
HAWAII	HAW.	STP-056-1(42)	1998	29	35



SURVEY PLOTTED BY: _____ DATE: 3/2/98
 DRAWN BY: E. ACCO
 CHECKED BY: _____
 ORIGINAL PLAN
 NOTE BOOK
 REVISIONS BY: _____
 CHECKED BY: _____

STATE OF HAWAII
 DEPARTMENT OF TRANSPORTATION
 HIGHWAYS DIVISION
PAVEMENT MARKING
TRAFFIC SIGNING PLAN
KUHIO HIGHWAY REHABILITATION
 Wailapa Road to Vicinity of Koolau Road
 Federal Aid Proj. No. STP-056-1(42)
 Scale: 1"=40' Date: May, 1998
 SHEET No. 9 OF 12 SHEETS

FED. ROAD DIST. NO.	STATE	FED. AID PROJ. NO.	FISCAL YEAR	SHEET NO.	TOTAL SHEETS
HAWAII	HAW.	STP-056-1(42)	1998	30	35



TRUE NORTH
SCALE: 1" = 40'

TRUE NORTH
SCALE: 1" = 40'

SURVEY PLOTTED BY	DATE
DRAWN BY	
NOTE BOOK	
REVISIONS BY	
CHECKED BY	

STATE OF HAWAII
DEPARTMENT OF TRANSPORTATION
HIGHWAYS DIVISION

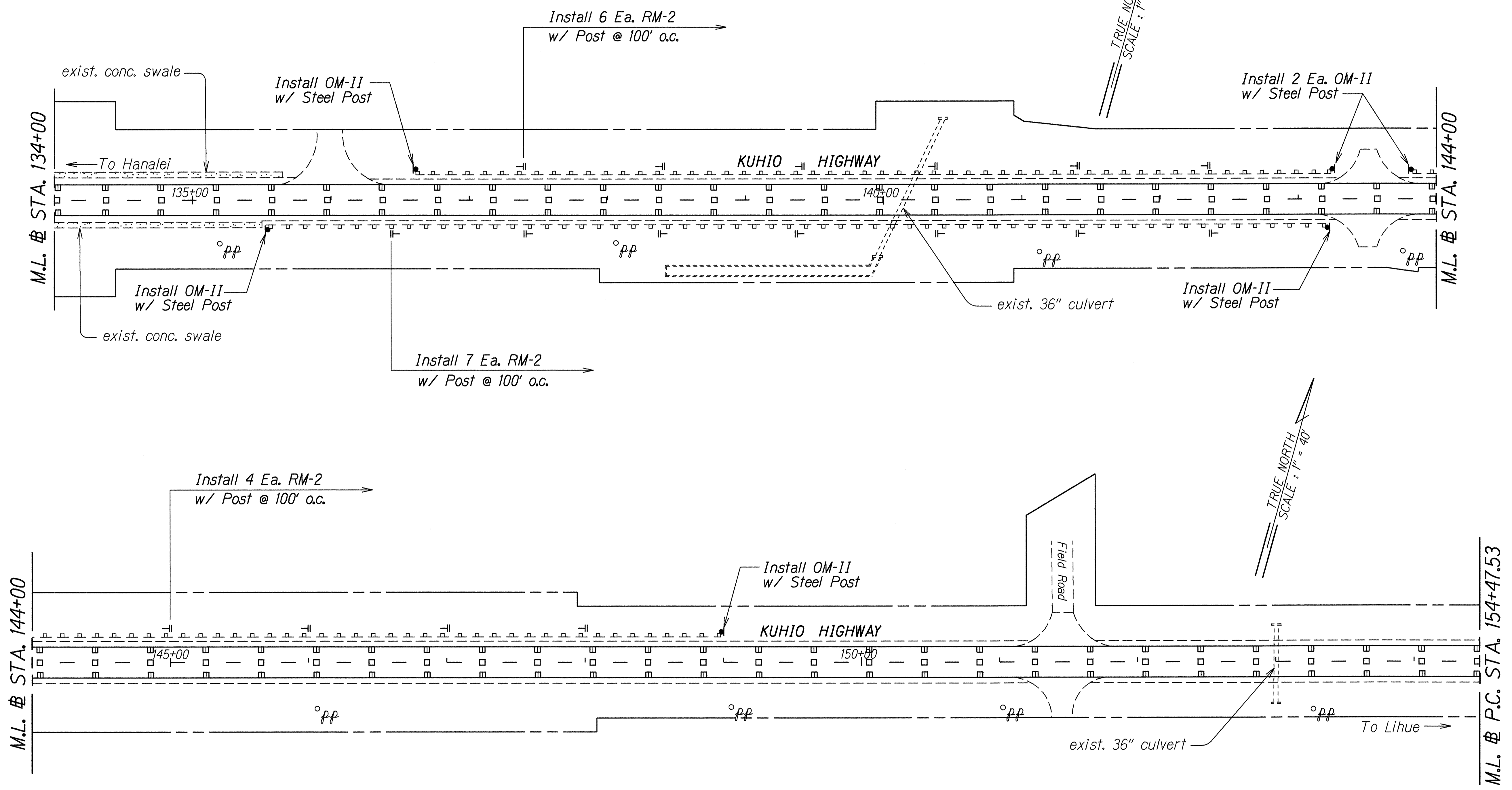
PAVEMENT MARKING
TRAFFIC SIGNING PLAN

KUHIO HIGHWAY REHABILITATION
Wailapa Road to Vicinity of Koolau Road
Federal Aid Proj. No. STP-056-1(42)

Scale: 1"=40' Date: May, 1998

SHEET No. 10 OF 12 SHEETS

FED. ROAD DIST. NO.	STATE	FED. AID PROJ. NO.	FISCAL YEAR	SHEET NO.	TOTAL SHEETS
HAWAII	HAW.	STP-056-1(42)	1998	31	35



ORIGINAL PLAN	SURVEY PLOTTED BY	DATE
NOTES BOOK	DRAWN BY	3/13/98
REVISIONS	CHECKED BY	

STATE OF HAWAII
DEPARTMENT OF TRANSPORTATION
HIGHWAYS DIVISION

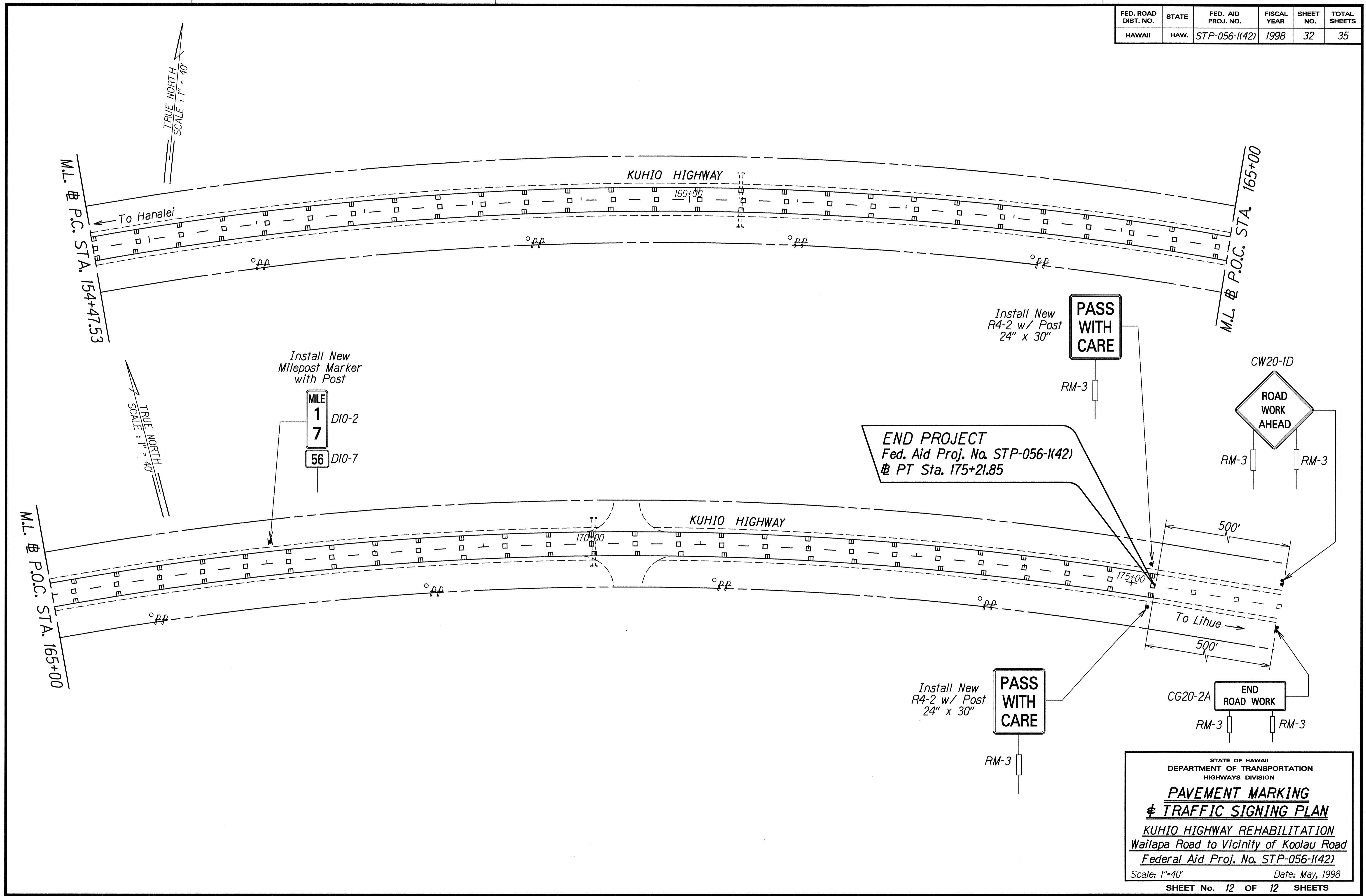
**PAVEMENT MARKING
& TRAFFIC SIGNING PLAN**

KUHIO HIGHWAY REHABILITATION
Wailapa Road to Vicinity of Koolau Road
Federal Aid Proj. No. STP-056-1(42)

Scale: 1"=40' Date: May, 1998

SHEET No. 11 OF 12 SHEETS

FED. ROAD DIST. NO.	STATE	FED. AID PROJ. NO.	FISCAL YEAR	SHEET NO.	TOTAL SHEETS
HAWAII	HAW.	STP-056-1(42)	1998	32	35



ORIGINAL PLAN	DATE
SURVEY PLOTTED BY	3-13-98
DRAWN BY	
DESIGNED BY	
CHECKED BY	
NOTE BOOK	
NO. 224	
DATE	
BY	
CHECKED BY	

STATE OF HAWAII
DEPARTMENT OF TRANSPORTATION
HIGHWAYS DIVISION

PAVEMENT MARKING
TRAFFIC SIGNING PLAN

KUHIO HIGHWAY REHABILITATION
Wailapa Road to Vicinity of Koolau Road
Federal Aid Proj. No. STP-056-1(42)

Scale: 1"=40' Date: May, 1998

SHEET No. 12 OF 12 SHEETS