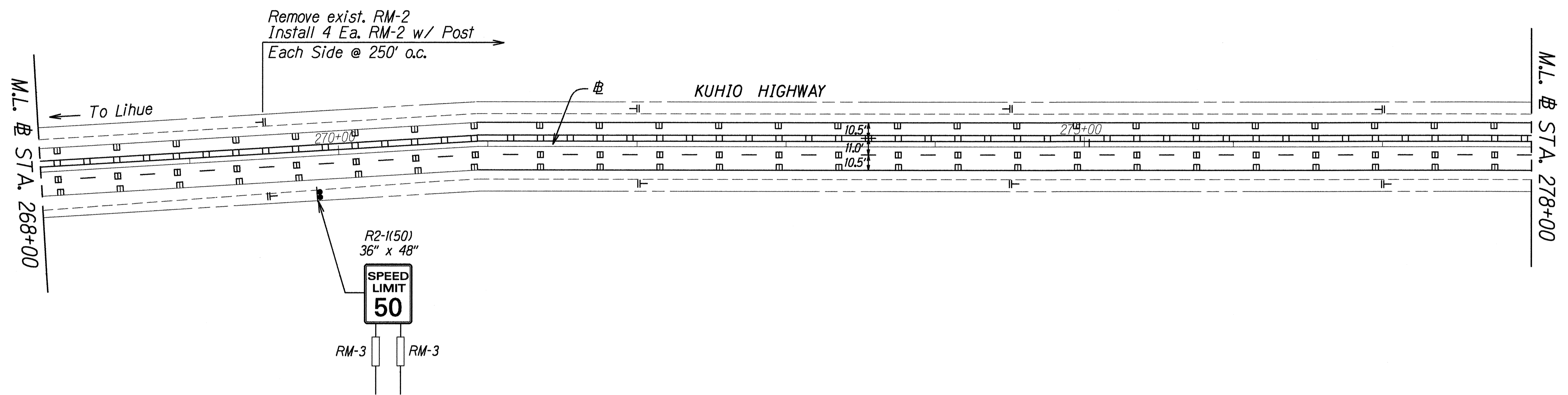
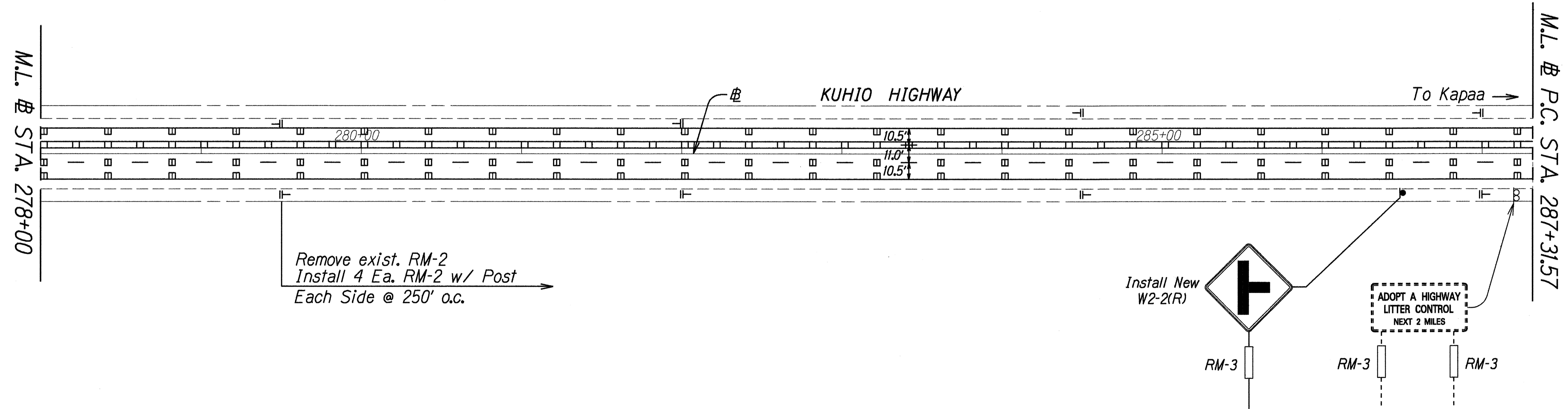


FED. ROAD DIST. NO.	STATE	FED. AID PROJ. NO.	FISCAL YEAR	SHEET NO.	TOTAL SHEETS
HAWAII	HAW.	STP-056-1(41)	1998	23	33

TRUE NORTH
SCALE: 1" = 40'



TRUE NORTH
SCALE: 1" = 40'



DATE	3-08-98
SURVEY PLOTTED BY	
DRAWN BY	H. Agob
TRACED BY	
QUANTITIES BY	B. Agob
CHECKED BY	
ORIGINAL PLAN	
NOTE BOOK	None/724
DATE	3/8/98
BY	H. Agob

STATE OF HAWAII
DEPARTMENT OF TRANSPORTATION
HIGHWAYS DIVISION

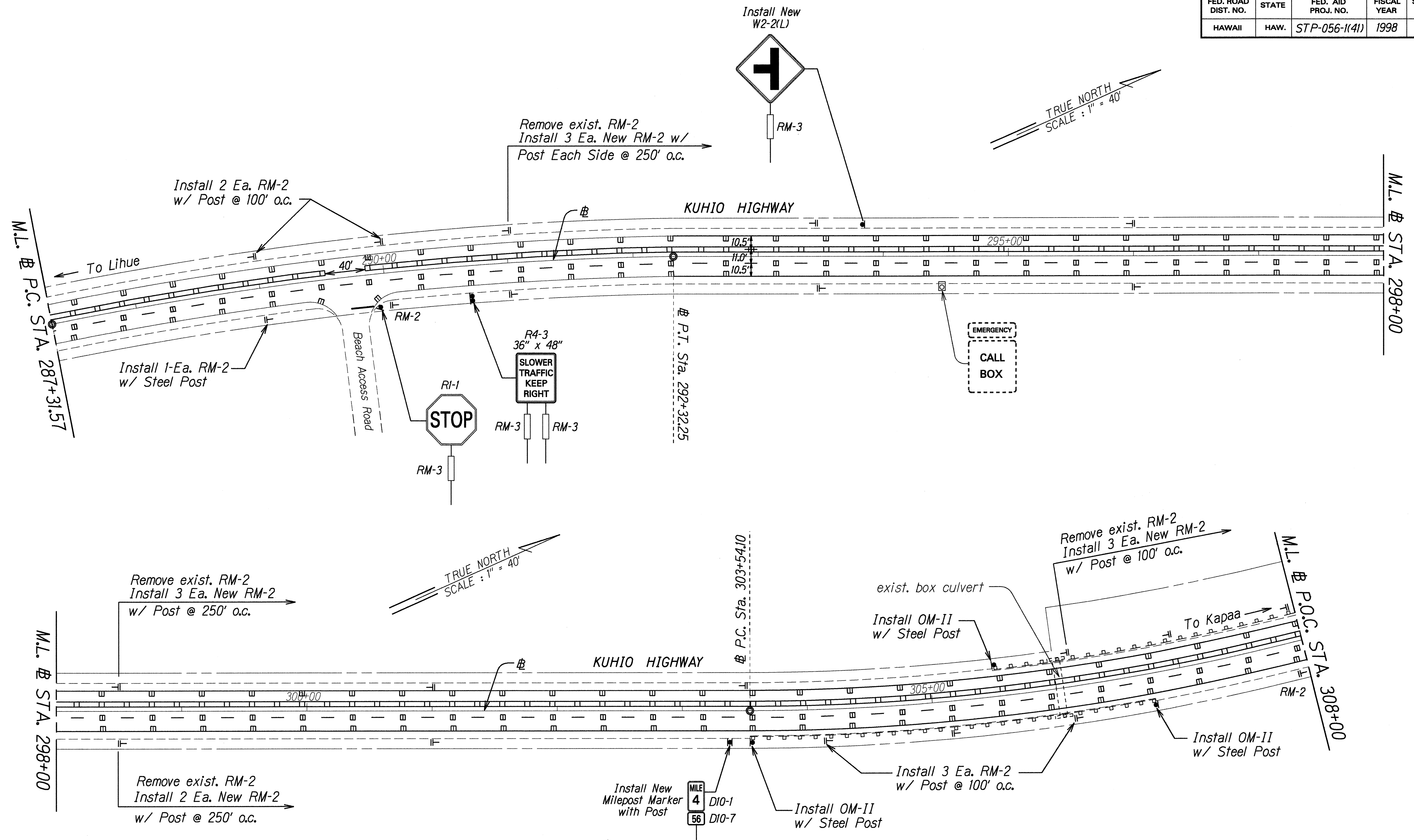
**PAVEMENT MARKING, STRIPING
& TRAFFIC SIGNING PLAN**

KUHIO HIGHWAY REHABILITATION
Hanamaulu To North Leho Drive
Federal Aid Proj. No. STP-056-1(41)

Scale: 1" = 40' Date: March, 1998

SHEET No. 3 OF 9 SHEETS

FED. ROAD DIST. NO.	STATE	FED. AID PROJ. NO.	FISCAL YEAR	SHEET NO.	TOTAL SHEETS
HAWAII	HAW.	STP-056-1(41)	1998	24	33



SURVEY PLOTTED BY	DATE
DRAWN BY	3-28-98
DESIGNED BY	
QUANTITIES BY	
CHECKED BY	
ORIGINAL PLAN	
NOTE BOOK	
KEA/ramon	
KEA/10/24/98	

STATE OF HAWAII
DEPARTMENT OF TRANSPORTATION
HIGHWAYS DIVISION

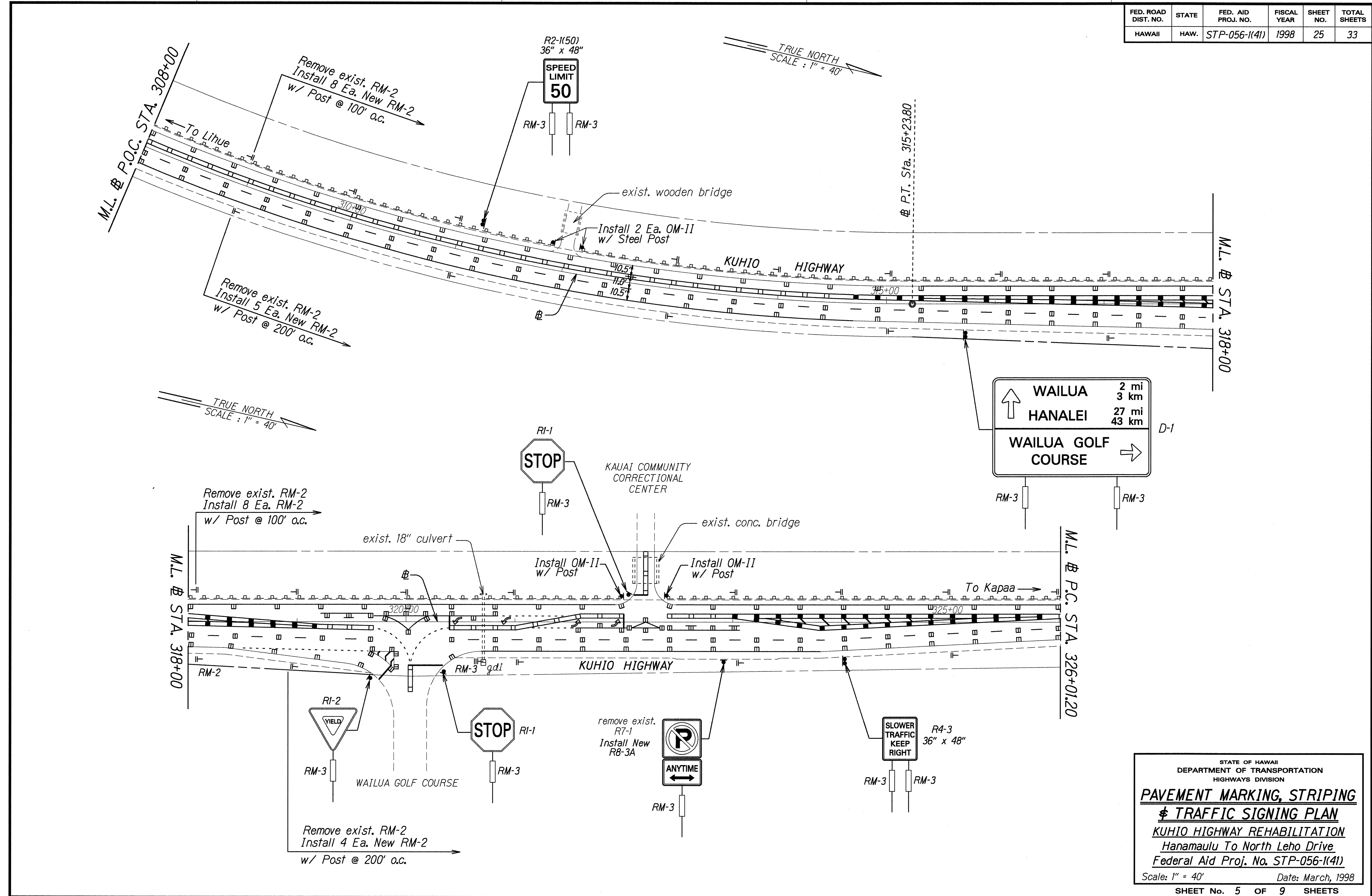
**PAVEMENT MARKING, STRIPING
& TRAFFIC SIGNING PLAN**

KUHIO HIGHWAY REHABILITATION
Hanamaulu To North Leho Drive
Federal Aid Proj. No. STP-056-1(41)

Scale: 1" = 40' Date: March, 1998

SHEET No. 4 OF 9 SHEETS

FED. ROAD DIST. NO.	STATE	FED. AID PROJ. NO.	FISCAL YEAR	SHEET NO.	TOTAL SHEETS
HAWAII	HAW.	STP-056-1(41)	1998	25	33



ORIGINAL PLAN	DATE	3/28/98
SURVEY PLATTED BY	DATE	
DRAWN BY	DATE	
DESIGNED BY	DATE	
NOTES	DATE	
QUANTITIES BY	DATE	
CHECKED BY	DATE	

STATE OF HAWAII
DEPARTMENT OF TRANSPORTATION
HIGHWAYS DIVISION

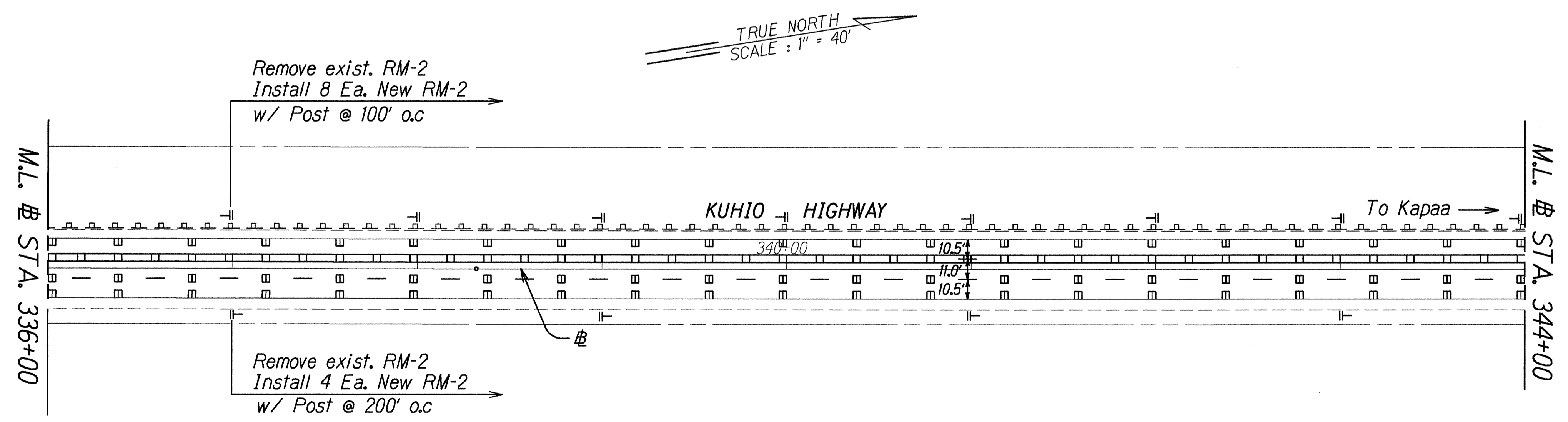
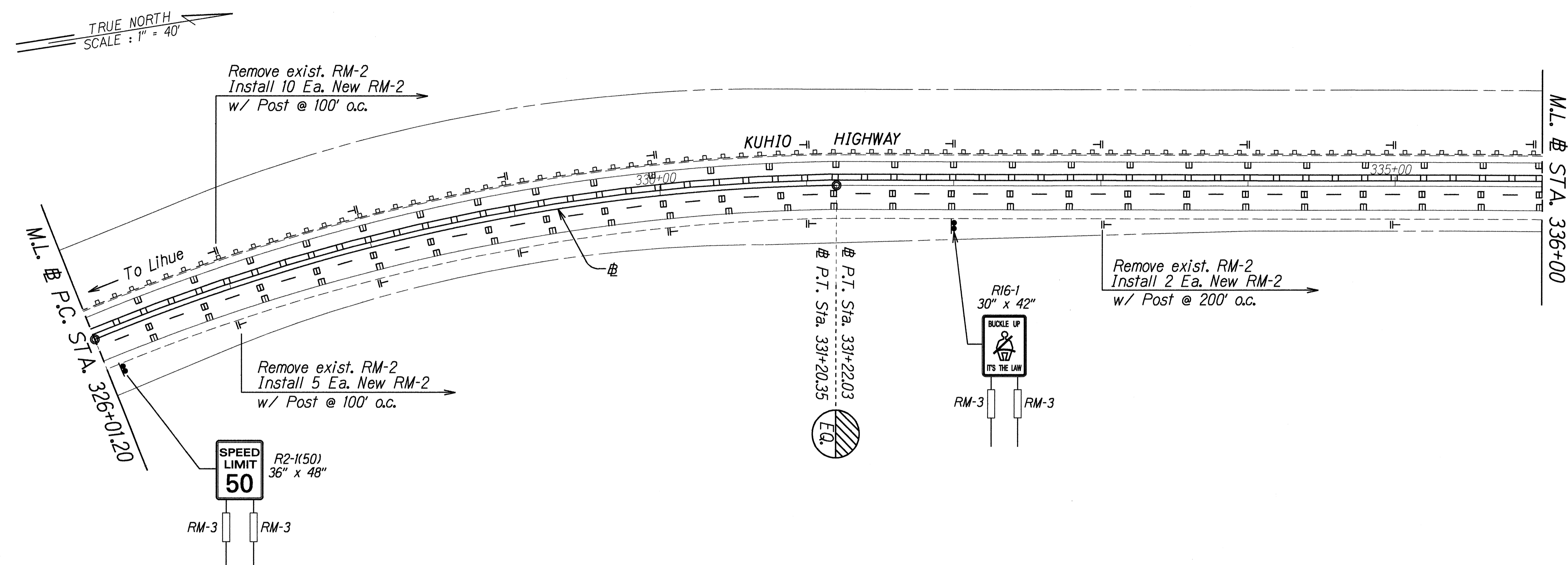
PAVEMENT MARKING, STRIPING
TRAFFIC SIGNING PLAN

KUHIO HIGHWAY REHABILITATION
Hanamaulu To North Leho Drive
Federal Aid Proj. No. STP-056-1(41)

Scale: 1" = 40' Date: March, 1998

SHEET No. 5 OF 9 SHEETS

FED. ROAD DIST. NO.	STATE	FED. AID PROJ. NO.	FISCAL YEAR	SHEET NO.	TOTAL SHEETS
HAWAII	HAW.	STP-056-1(41)	1998	26	33



ORIGINAL PLAN	DATE	3/28/98
SURVEY PLOTTED BY		
DRAWN BY		
NOTE BOOK DESIGNED BY		
QUANTITIES BY		
CHECKED BY		

STATE OF HAWAII
DEPARTMENT OF TRANSPORTATION
HIGHWAYS DIVISION

PAVEMENT MARKING, STRIPING
& TRAFFIC SIGNING PLAN

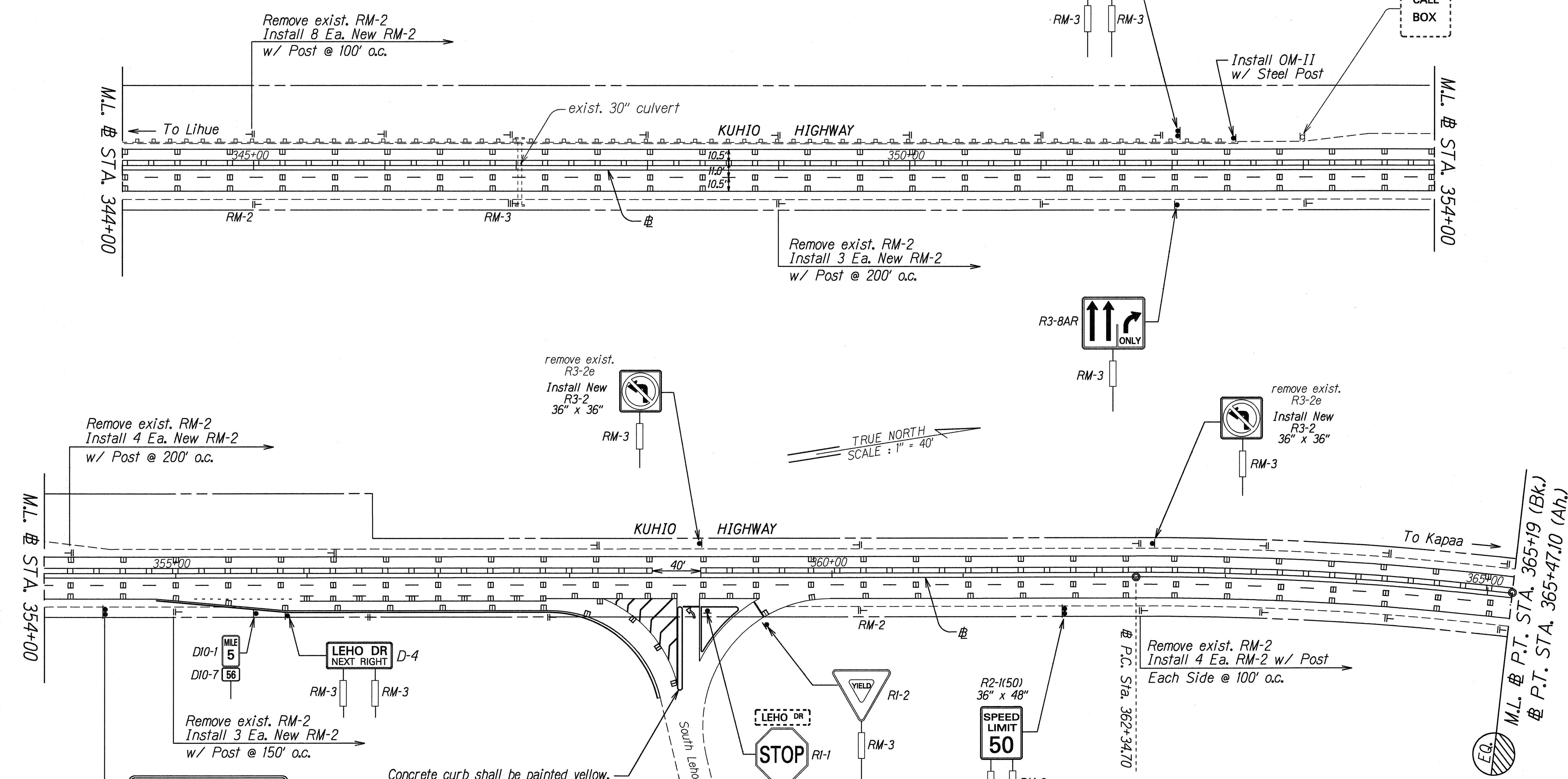
KUHIO HIGHWAY REHABILITATION
Hanamaulu To North Leho Drive
Federal Aid Proj. No. STP-056-1(41)

Scale: 1" = 40' Date: March, 1998

SHEET No. 6 OF 9 SHEETS

FED. ROAD DIST. NO.	STATE	FED. AID PROJ. NO.	FISCAL YEAR	SHEET NO.	TOTAL SHEETS
HAWAII	HAW.	STP-056-1(41)	1998	27	33

TRUE NORTH
SCALE: 1" = 40'



Remove exist. RM-2
Install 8 Ea. New RM-2
w/ Post @ 100' o.c.

Remove exist. RM-2
Install 3 Ea. New RM-2
w/ Post @ 200' o.c.

Remove exist. RM-2
Install 4 Ea. New RM-2
w/ Post @ 200' o.c.

remove exist.
R3-2e
Install New
R3-2
36" x 36"

remove exist.
R3-2e
Install New
R3-2
36" x 36"

Remove exist. RM-2
Install 3 Ea. New RM-2
w/ Post @ 150' o.c.

Remove exist. RM-2
Install 4 Ea. RM-2 w/ Post
Each Side @ 100' o.c.

Concrete curb shall be painted yellow.
Painting shall be considered incidental
to Item No. 609.2020 - Curb, Type 2D.

DATE	3/20/98
SURVEY PLOTTED BY	
DRAWN BY	H. Aoba
TRACED BY	R. Aoba
QUANTITIES BY	
CHECKED BY	
ORIGINAL PLAN	
NOTE BOOK	1027/1000
DATE	5/26/98
CHECKED BY	

APPROVED: (FOR WORK WITHIN COUNTY RIGHT-OF-WAY)

Springer
COUNTY ENGINEER

5/26/98
DATE

STATE OF HAWAII
DEPARTMENT OF TRANSPORTATION
HIGHWAYS DIVISION

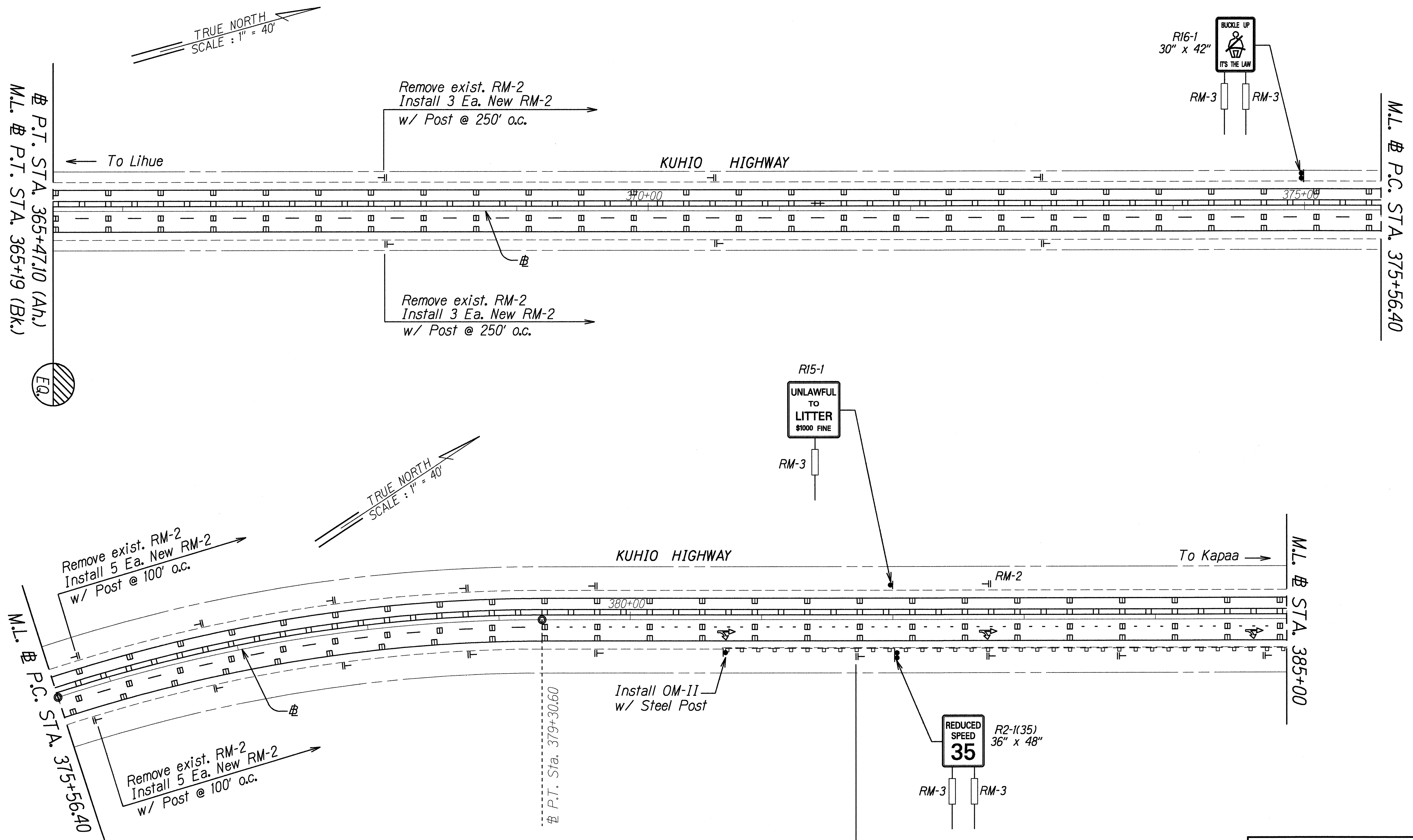
PAVEMENT MARKING, STRIPING
TRAFFIC SIGNING PLAN

KUHIO HIGHWAY REHABILITATION
Hanamaulu To North Leho Drive
Federal Aid Proj. No. STP-056-1(41)

Scale: 1" = 40' Date: March, 1998

SHEET No. 7 OF 9 SHEETS

FED. ROAD DIST. NO.	STATE	FED. AID PROJ. NO.	FISCAL YEAR	SHEET NO.	TOTAL SHEETS
HAWAII	HAW.	STP-056-1(41)	1998	28	33



SURVEY PLANNED BY	DATE
DESIGNED BY	
NOTES CHECKED BY	
QUANTITIES BY	
CHECKED BY	
ORIGINAL PLAN	
NOTES	
DESIGNED BY	
QUANTITIES BY	
CHECKED BY	

STATE OF HAWAII
DEPARTMENT OF TRANSPORTATION
HIGHWAYS DIVISION

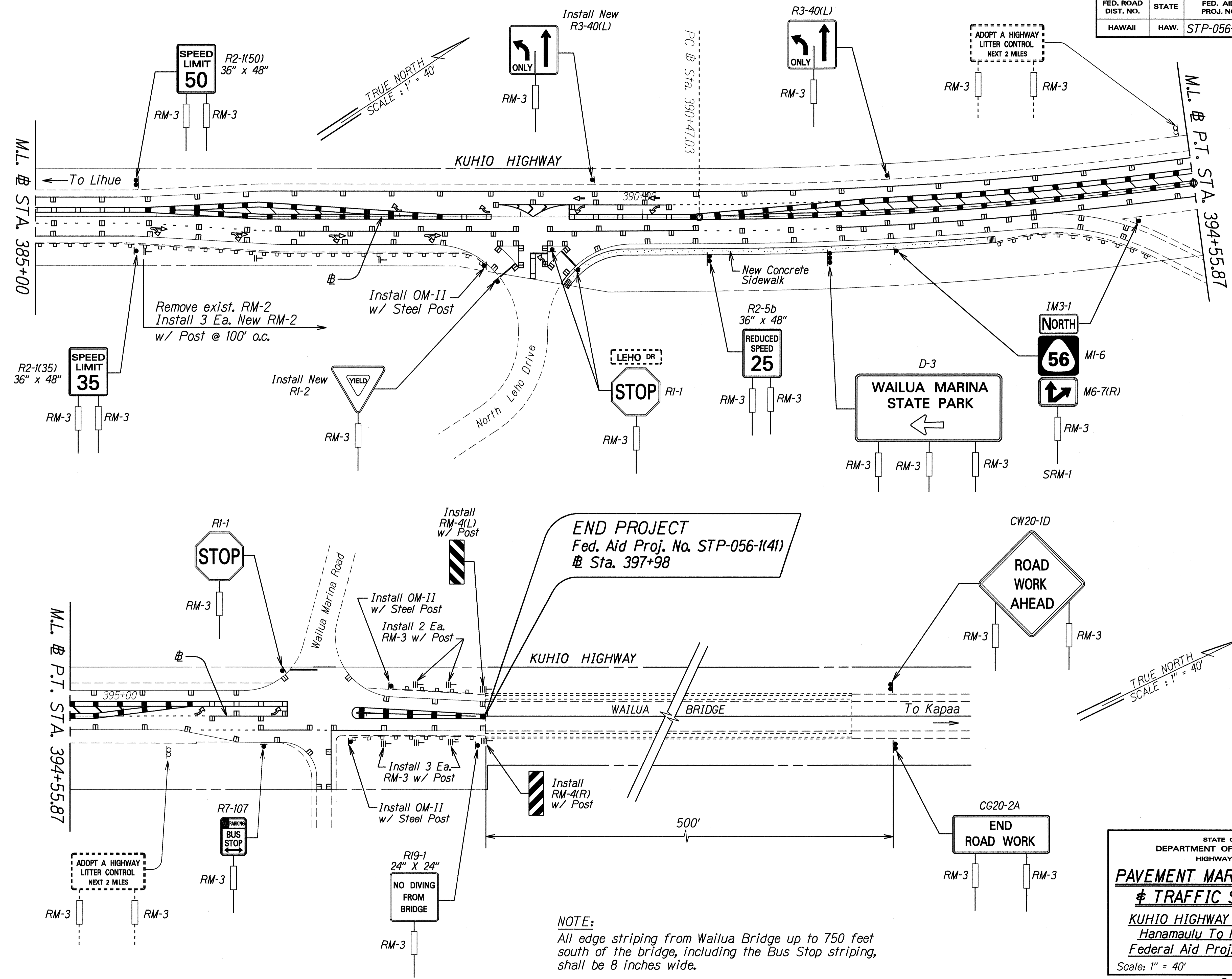
**PAVEMENT, STRIPING
& TRAFFIC SIGNING PLAN**

KUHIO HIGHWAY REHABILITATION
Hanamaulu To North Leho Drive
Federal Aid Proj. No. STP-056-1(41)

Scale: 1" = 40' Date: March, 1998

SHEET No. 8 OF 9 SHEETS

FED. ROAD DIST. NO.	STATE	FED. AID PROJ. NO.	FISCAL YEAR	SHEET NO.	TOTAL SHEETS
HAWAII	HAW.	STP-056-1(41)	1998	29	33



NOTE:
 All edge striping from Wailua Bridge up to 750 feet south of the bridge, including the Bus Stop striping, shall be 8 inches wide.

SURVEY PLOTTED BY	DATE
DRAWN BY	
NOTES	
QUANTITIES BY	
CHECKED BY	

STATE OF HAWAII
 DEPARTMENT OF TRANSPORTATION
 HIGHWAYS DIVISION

**PAVEMENT MARKING, STRIPING
 & TRAFFIC SIGNING PLAN**

KUHIO HIGHWAY REHABILITATION
 Hanamaulu To North Leho Drive
 Federal Aid Proj. No. STP-056-1(41)

Scale: 1" = 40' Date: March, 1998

SHEET No. 9 OF 9 SHEETS