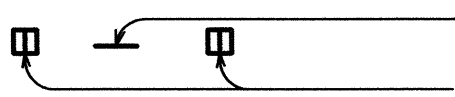


FED. ROAD DIST. NO.	STATE	PROJ. NO.	FISCAL YEAR	SHEET NO.	TOTAL SHEETS
HAWAII	HAW.	HWY-K-03-00	2002	19	30

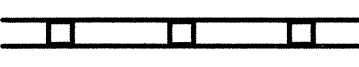
LEGEND



4 each Type A Raised Pavement Markers
Type C Raised Pavement Markers (RPM) at 40'-0" o.c.



8" White Stripe with Type C
Raised Pavement Markers (RPM) at 20'-0" o.c.
(Tape, Type I or Thermoplastic Extrusion)



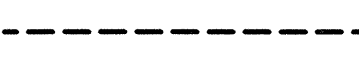
4" Double Solid Yellow with Type D
Raised Pavement Markers (RPM) at 20'-0" o.c.
(Tape, Type I or Thermoplastic Extrusion)



4" Double Solid Yellow Stripe with Type H
Raised Pavement Markers (RPM) at 20'-0" o.c.
(Tape, Type I or Thermoplastic Extrusion)



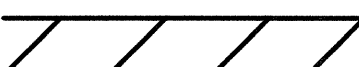
4" or 8" White Edge Stripe with Type C
Raised Pavement Markers at 40'-0" o.c.
(Tape, Type II or Thermoplastic Extrusion)



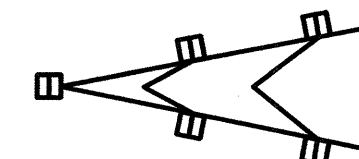
4" White Guide Lines (Tape, Type III or
Thermoplastic Extrusion except for bus bays)



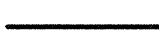
Transverse Median Marking (Tape, Type II or
Thermoplastic Extrusion)



Transverse Shoulder Marking
(Tape, Type II or Thermoplastic Extrusion)



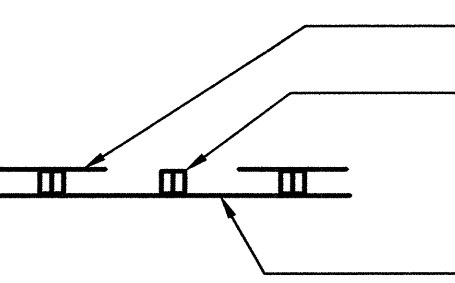
Channelizing Island or Deceleration Lane Gore
(Tape, Type II or Thermoplastic Extrusion)



Stop Line.
(Tape, Type III or Thermoplastic Extrusion)



Pavement Arrow
(Tape, Type III or Thermoplastic Extrusion)



4 Each Type A Raised Pavement Markers
Type C Raised Pavement Markers at 20'-0" o.c.

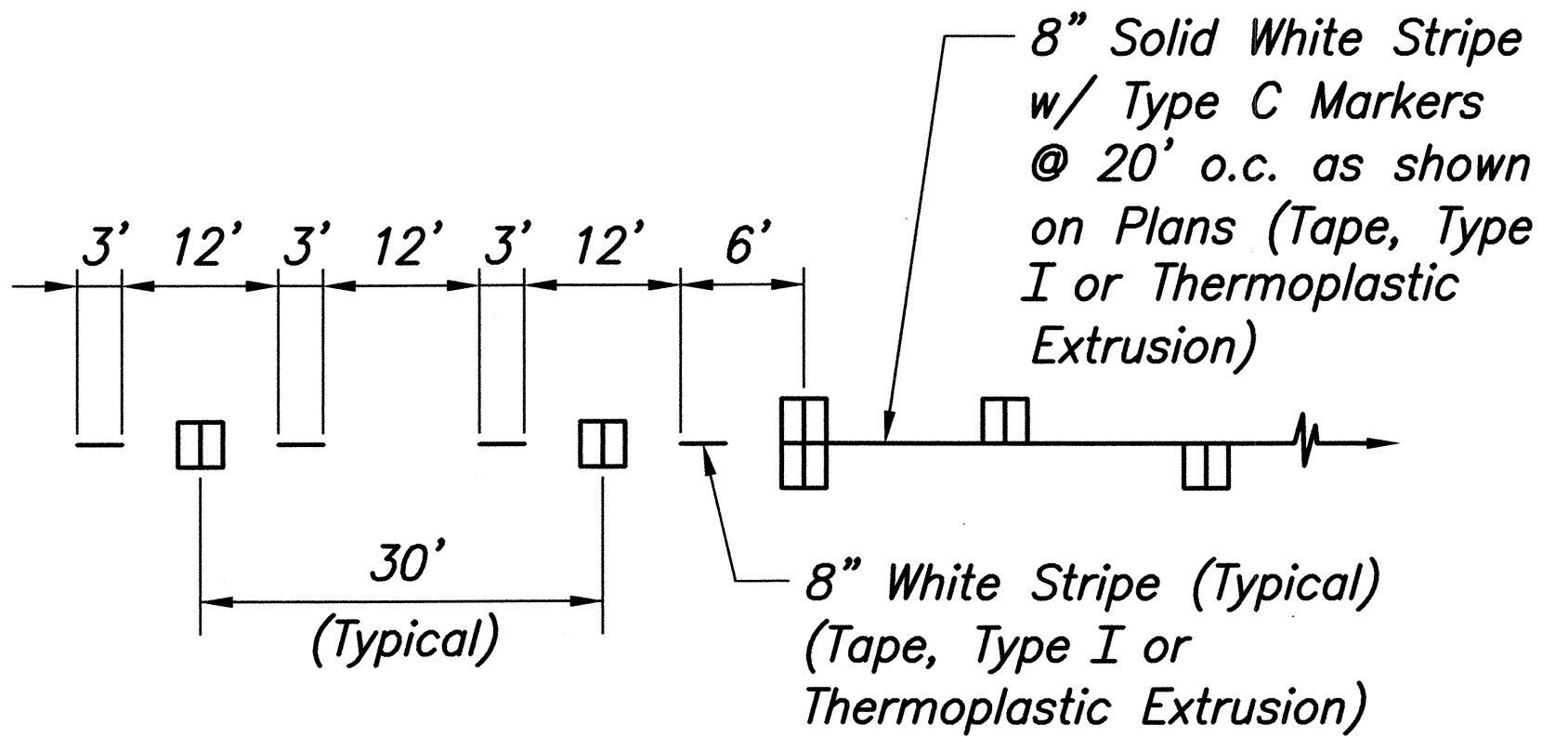


4" Single Solid White Stripe
(Tape, Type I or Thermoplastic Extrusion)

Yield Line (Shark Teeth)

NOTES

1. Layout of pavement markings and striping shall be done by the Contractor and approved by the Engineer prior to any installation work.
2. Existing pavement markings not incorporated in the final traffic pattern shall be removed as directed by the Engineer. The removal of existing pavement markings shall not be paid for separately but shall be considered incidental to the various pavement marking items.
3. Final locations of all signs shall be approved by the Engineer prior to any installation work.
4. Existing signs not shown on these plans shall remain as posted unless otherwise directed by the Engineer. Removal and disposal of existing signs and/or posts as designated on these plans shall be incidental to the various signing items.
5. Final locations of all stop lines shall be approved by the Engineer prior to installation.
6. All pavement striping shall be as noted on the legend or plans.
7. All preformed pavement marking tapes over existing pavement shall be applied with an approved primer as recommended by the tape manufacturer and as approved by the Engineer. The primer shall be allowed to dry to the tacky stage prior to tape application.
8. Removal of existing delineators and posts as directed by the Engineer shall be considered incidental to the various signing items.
9. Existing signs that are to be replaced shall not be removed until new signs are installed as replacements, or the messages are no longer necessary. Removal of existing signs and posts to be replaced shall be considered incidental to the various sign items.
10. Backing for all new regulatory and warning signs shall not be spliced.
11. All sign panels shall conform to Section 621 of Special Provisions and the latest editions and amendments of the following FHWA publications:
 - a. "Manual on Uniform Traffic Control Devices for Street and Highways" (MUTCD)
 - b. "Standard Highway Signs"
 - c. "Standard Alphabets for Highway Signs"
12. All new and relocated signs and markers installed on pipe post or light standard are to be mounted with band brackets and steel braces.
13. The Contractor shall erect at the beginning of the project and at the end of the project advance construction warning signs as indicated on the plans or as directed by the Engineer for the duration of the highway project and shall be maintained by the Contractor. These signs shall be placed in addition to the required traffic control signs called for in Section 645-Traffic Control. The advance construction warning signs shall be new and become the property of the State. The Contractor shall remove, clean and deliver the signs and posts to the Kauai District Baseyard or as directed by the Engineer at the end of the project.
14. The Contractor shall install new Type II Object Markers on all utility poles that are within the State Highway Right-of-way as directed by the Engineer. This shall be paid for under contract Item No. 621.4701-Object Marker, Type II.



LANE DROP MARKING

Not to Scale

Legend:

- ||— Reflector Marker (RM-2) w/ Post
- |||— Reflector Marker (RM-3) w/ Post
- ||||— Reflector Marker (RM-4) w/ Post



THIS WORK WAS PREPARED BY ME
OR UNDER MY SUPERVISION
Signature: *Pete G. Pasqua* 4/20/02
Expiration Date of the License

STATE OF HAWAII
DEPARTMENT OF TRANSPORTATION
HIGHWAYS DIVISION
**PAVEMENT MARKING
LEGEND, DETAILS AND NOTES**
KUHIO HIGHWAY
Intersection Improvements
at South Leho Drive
Project No. HWY-K-03-00
Scale: As Noted Date: Nov. 26, 2001
SHEET No. 1 OF 1 SHEETS

"AS-BUILT"