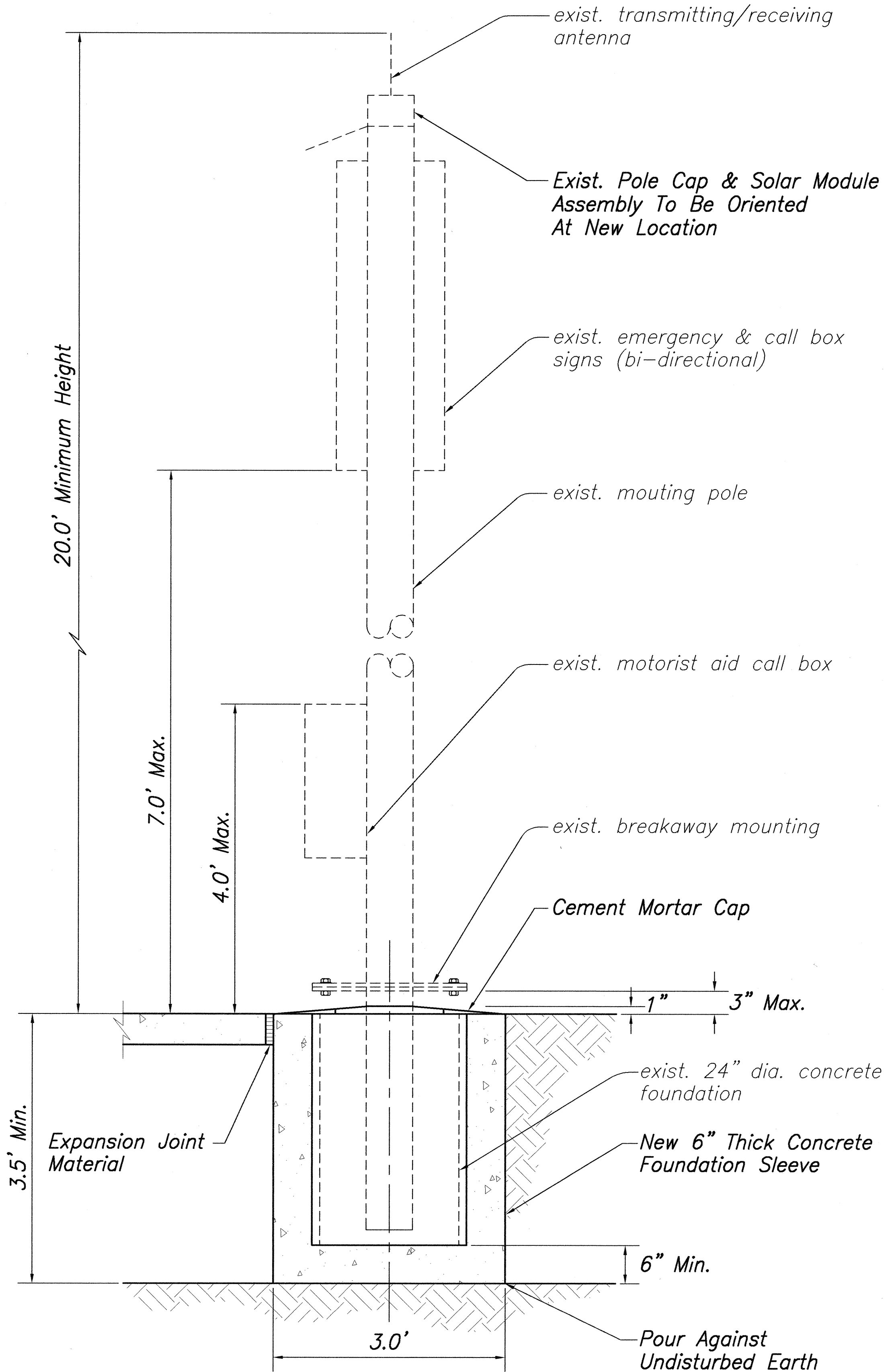


FED. ROAD DIST. NO.	STATE	PROJ. NO.	FISCAL YEAR	SHEET NO.	TOTAL SHEETS
HAWAII	HAW.	HWY-K-03-00	2002	9	30

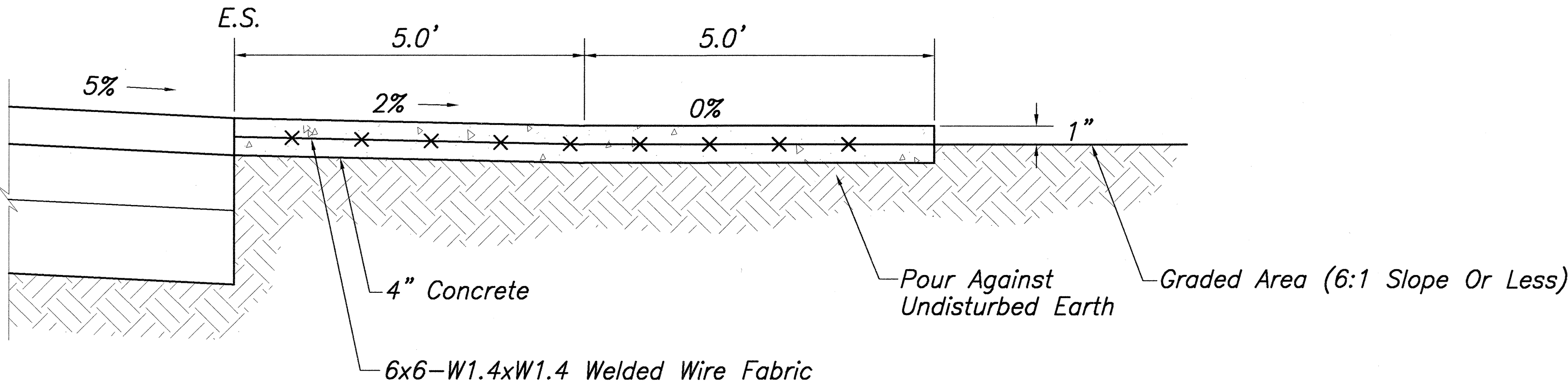
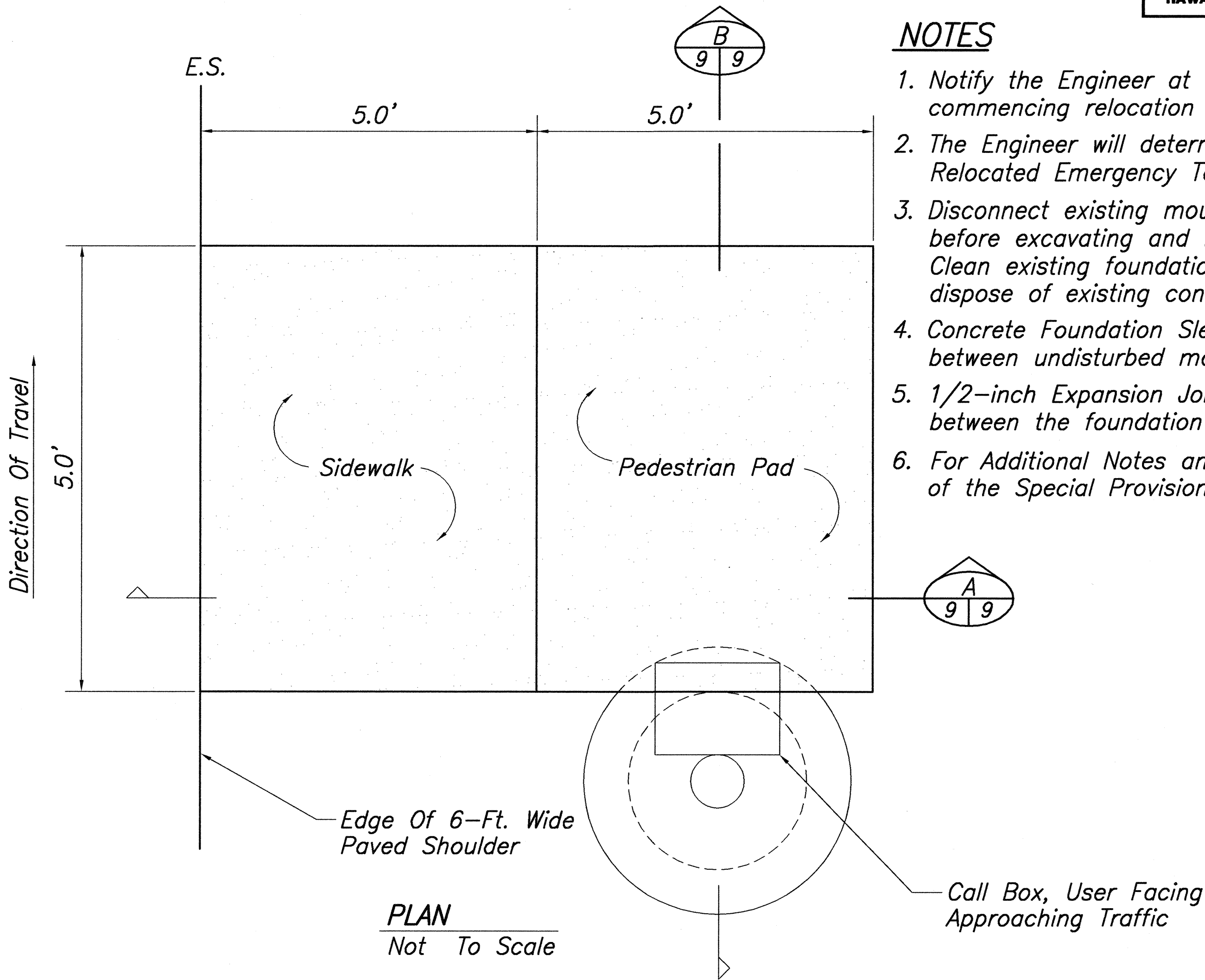
NOTES

1. Notify the Engineer at least 3 days before commencing relocation operations.
2. The Engineer will determine the exact location of the Relocated Emergency Telephone Station in the field.
3. Disconnect existing mounting pole assembly from base before excavating and removing existing concrete foundation. Clean existing foundation after removal. Remove and dispose of existing concrete pedestrian pad.
4. Concrete Foundation Sleeve shall be Class B placed between undisturbed material and existing foundation.
5. 1/2-inch Expansion Joint Material shall be placed between the foundation and abutting concrete pad.
6. For Additional Notes and Specification – See Section 664 of the Special Provisions.



SECTION
Not To Scale

DETAILS FOR RELOCATION OF EMERGENCY TELEPHONE CALL BOX
Not To Scale



SECTION
Not To Scale

STATE OF HAWAII
DEPARTMENT OF TRANSPORTATION
HIGHWAYS DIVISION
**EMERGENCY TELEPHONE CALL BOX
RELOCATION DETAIL**
KUHIU HIGHWAY
Intersection Improvements
at South Leho Drive
Project No. HWY-K-03-00
Scale: As Noted Date: Nov. 26, 2001

SHEET No. 1 OF 1 SHEETS