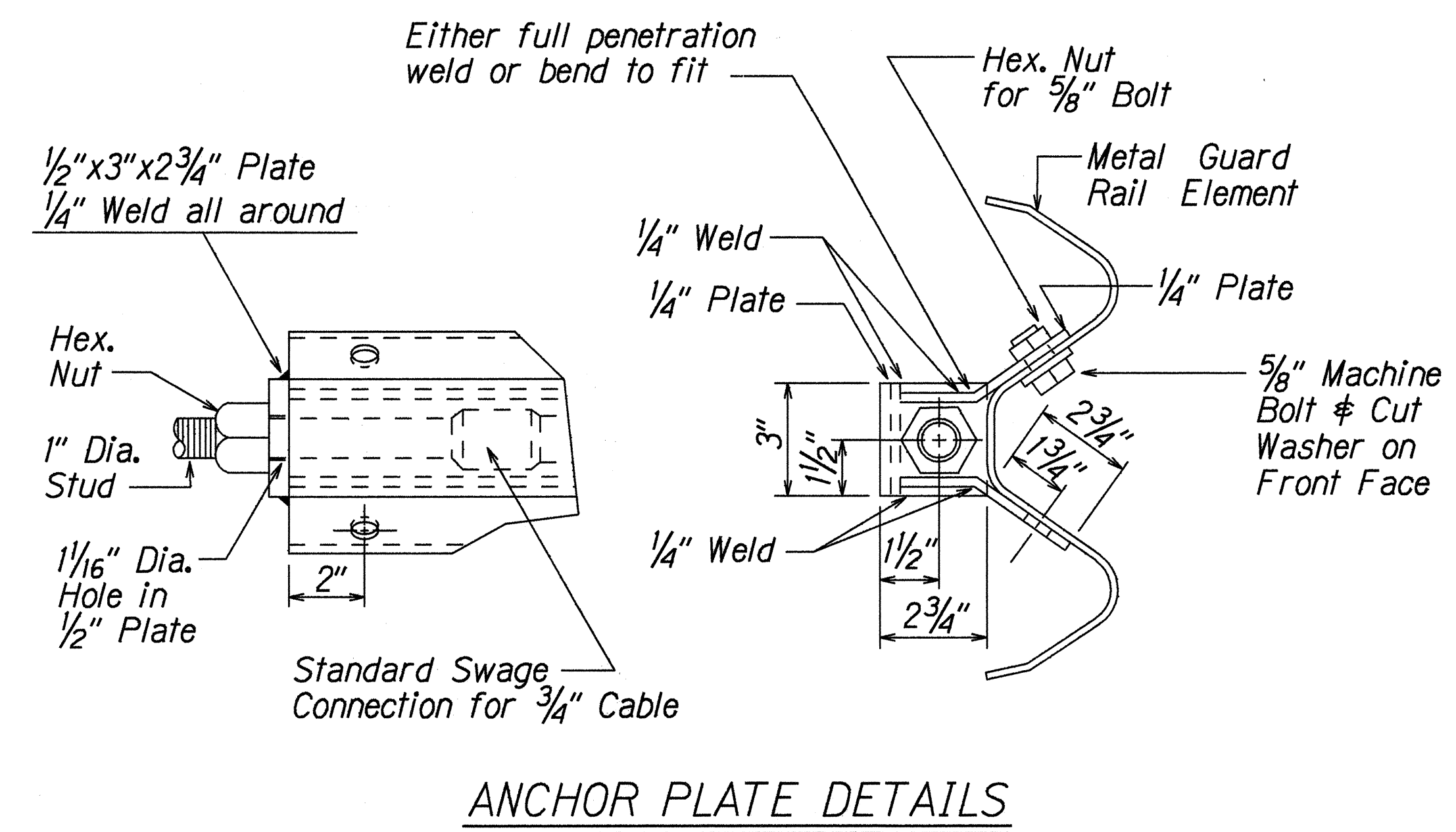
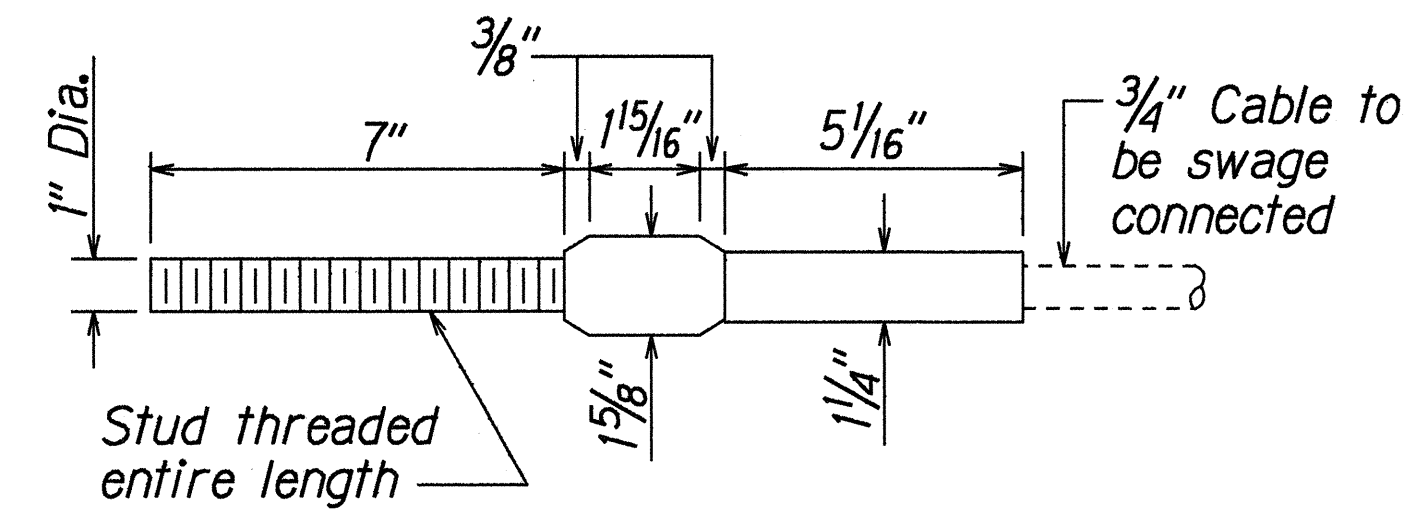


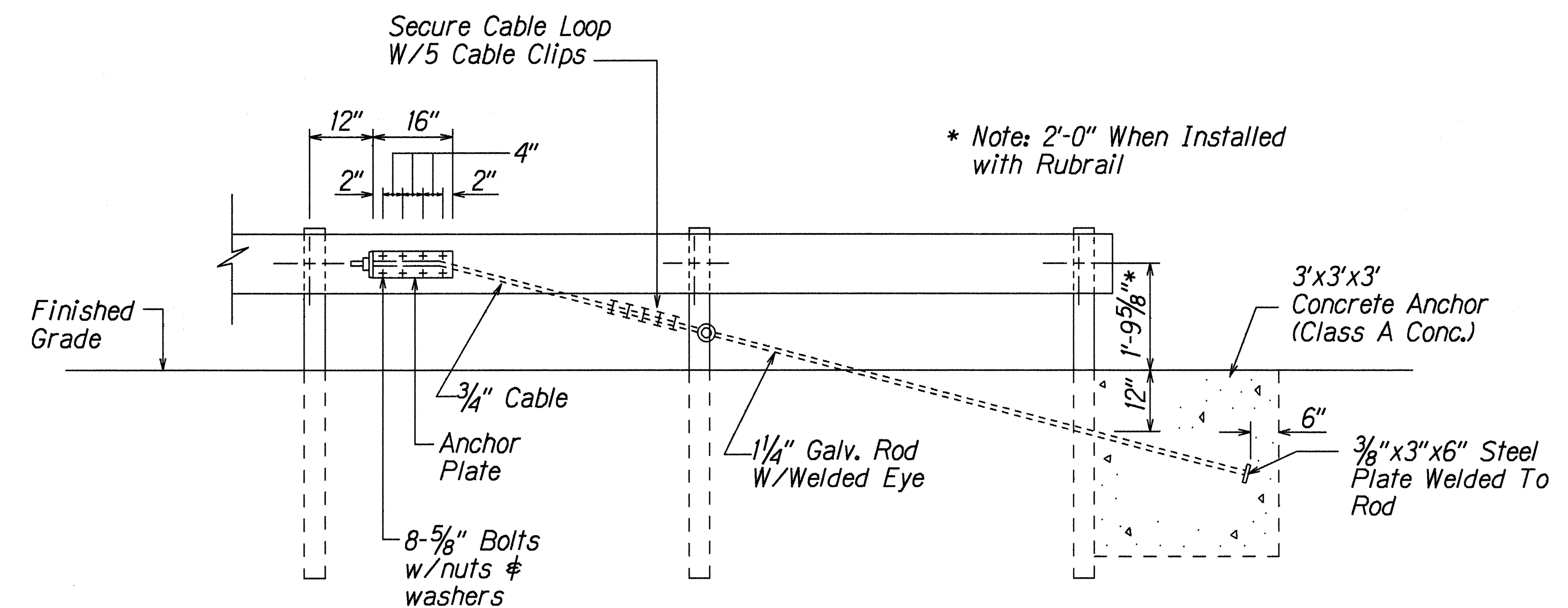
| FED. ROAD DIST. NO. | STATE | FED. AID PROJ. NO. | FISCAL YEAR | SHEET NO. | TOTAL SHEETS |
|---------------------|-------|--------------------|-------------|-----------|--------------|
| HAWAII | HAW. | STP-056-1(43) | 2000 | 16 | 42 |



ANCHOR PLATE DETAILS

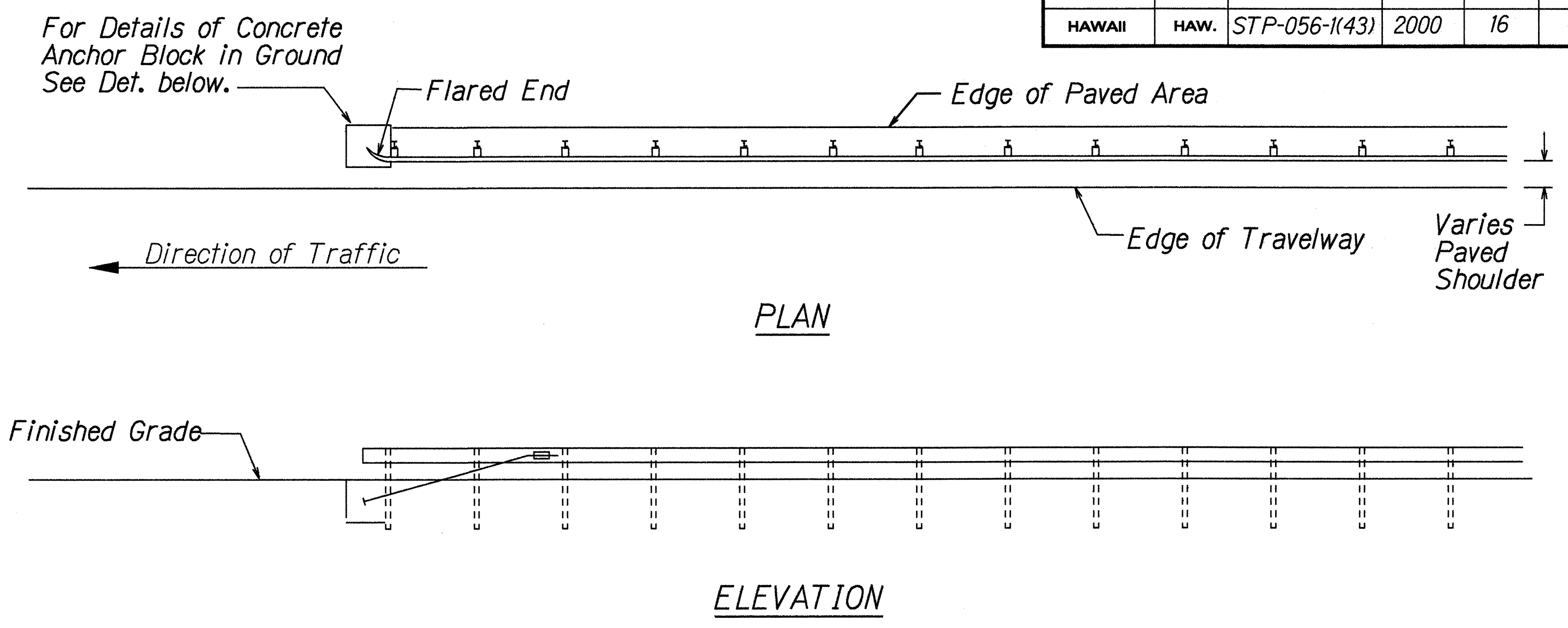


STANDARD SWAGED FITTING AND STUD



ANCHOR BLOCK DETAIL

- Concrete, G.R.P., excavation, anchor rod and miscellaneous appurtenances necessary to anchor the guardrail ends shall be incidental to metal guardrail.



TYPE "G" FLARE END TERMINAL

NOTE:

Type "G" Modified End Terminal is a site specific end terminal with a taper and radial termini. A site specific detailed drawing is required for all Type "G" Modified End Terminal and must receive Engineer's approval.

The taper (flare rate) of the guardrail shall follow the latest edition of AASHTO'S Roadside Design Guide (currently, Table 5.6 - Suggested Flare Rate for Barrier Design, page 5-21, Jan. 1996 edition).

The radius of the radial termini is an Engineer's judgement based on the site evaluation. The Engineer shall consider safety (minimize the spearing & blunt end situation); degree and potential seriousness of the hazard; bicycle and pedestrian accessibility; maintenance equipment accessibility; Right-of-Way availability; the smallest radii the metal w-beam/thrie-beam railing can be constructed (check with supplier/contractor); posted speed limit; angle of vehicle impact; and aesthetics when designing the Type "G" Modified End Terminal.

During construction, the Contractor shall layout the proposed Type "G" Modified End Terminal and receive approval from the Construction Engineer prior to installation.

| | | |
|---------------|-------------------|------|
| ORIGINAL PLAN | SURVEY PLOTTED BY | DATE |
| NOTE BOOK | DRAWN BY | |
| | DESIGNED BY | |
| | CHECKED BY | |
| | IN CHARGE | |

Standard Plan TE-59 11/03/89
r3/01/99 ekmsk659.dgn

STATE OF HAWAII
DEPARTMENT OF TRANSPORTATION
HIGHWAYS DIVISION

GUARDRAIL DETAILS
TYPE 'G' FLARE
KUH10 HIGHWAY- Guardrail and Shoulder Improvements at Various Locations
Fed. Aid Project No. STP-056-1(43)
Scale: NTS Date: April, 1999

SHEET No. 1 OF 1 SHEETS