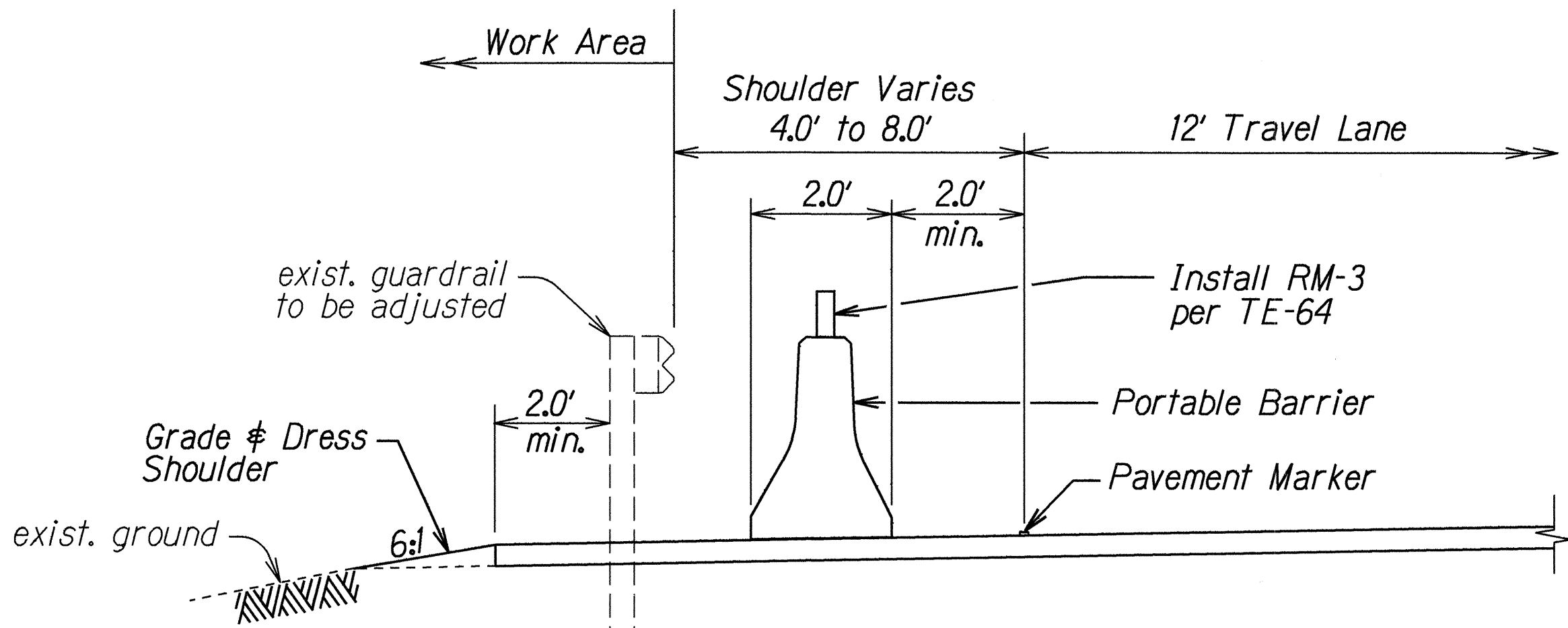
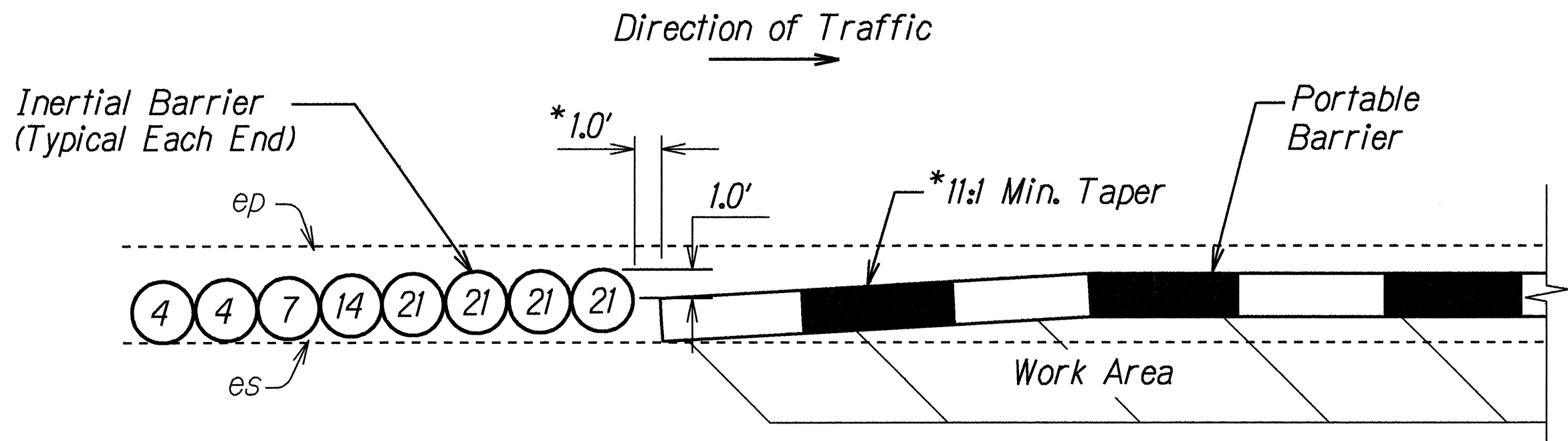


FED. ROAD DIST. NO.	STATE	PROJ. NO.	FISCAL YEAR	SHEET NO.	TOTAL SHEETS
HAWAII	HAW.	56BC-01-99M	1999	8	32



**TYPICAL DETAIL  
PORTABLE BARRIER**  
Not To Scale

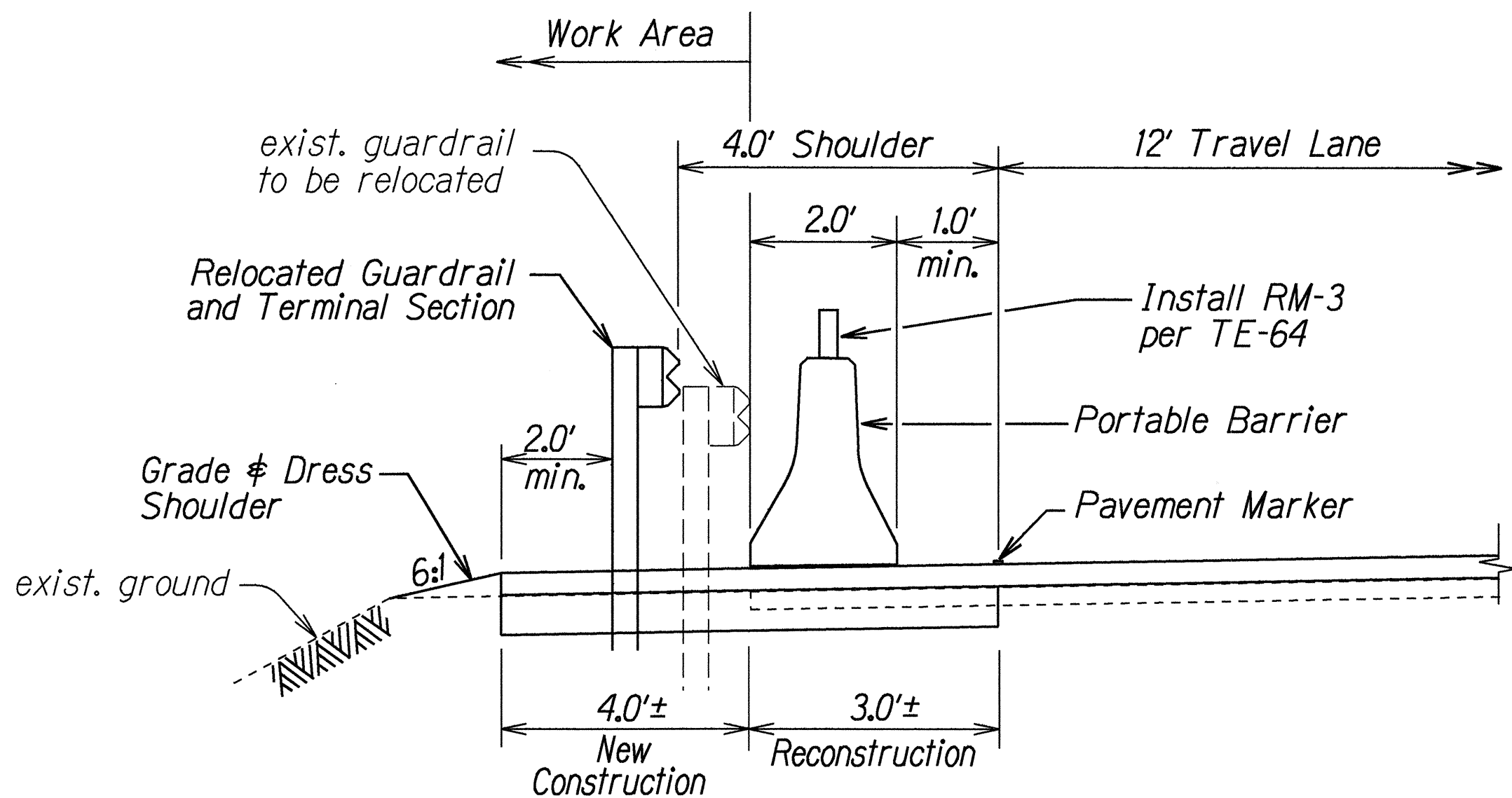


NOTE: The numbers inside the circle indicate weight of sand in 100 lb unit. Installation shall conform to Manufacturer's recommendations.

**TYPICAL DETAIL  
8-MODULE INERTIAL BARRIER**  
Not To Scale

**NOTES:**

- Typical layout will vary based on speed and manufacturer of system used. Installation shall conform to Manufacturer's recommendations.
- Physical barriers shall be required whenever guardrails have been removed and will not be reinstalled at the end of the work day. See General Note No. 21 on Plan Sht. No. 3.
- Physical barriers shall be either portable concrete barriers or portable water-filled barriers. Installation of portable water-filled barriers shall conform to Manufacturer's recommendations as dictated by design speed and field conditions.
- Providing, transporting, placing, maintaining, relocating and removing physical barriers shall be considered incidental to the various items of work. See Section 645, TRAFFIC CONTROL DEVICES of the Special Provisions.
- Ends of portable barriers shall be protected with Inertial Barriers as shown above. Furnishing and installing inertial barriers shall be considered incidental to the various contract items.
- Furnishing and installing reflector markers (RM-3) over the portable barriers shall be considered incidental to the various contract items.



**PORTABLE BARRIER DETAIL**  
**KUHIO HIGHWAY - STA. 173+00 TO STA. 174+00 (o/s Lt.)**  
Not To Scale

SURVEY PLOTTED BY	DATE
DESIGNED BY	12-99
TRACED BY	
NOTE BOOK	
DESIGNED BY	
QUANTITIES BY	
CHECKED BY	

STATE OF HAWAII  
DEPARTMENT OF TRANSPORTATION  
HIGHWAYS DIVISION

**PORTABLE PHYSICAL BARRIER  
DETAILS**  
**KUHIO HIGHWAY RESURFACING**  
**Vicinity of Kumukumu to Aliomanu Road**  
**Project No. 56BC-01-99M**  
Scale: As Shown      Date: April, 1999  
SHEET No. 1 OF 1 SHEETS