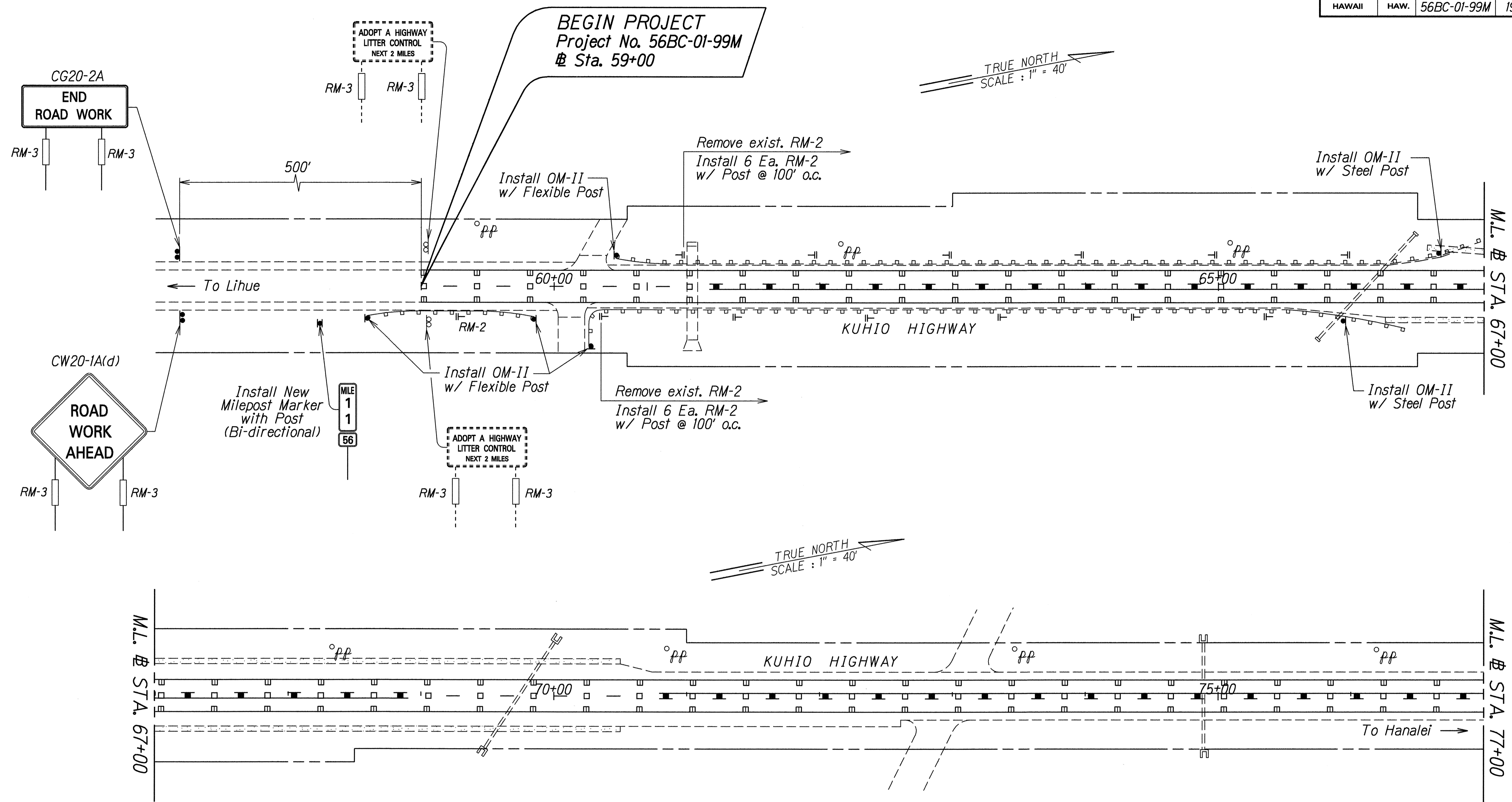


FED. ROAD DIST. NO.	STATE	PROJ. NO.	FISCAL YEAR	SHEET NO.	TOTAL SHEETS
HAWAII	HAW.	56BC-01-99M	1999	21	32



DATE	12-7-99
DESIGNED BY	E. ACOB
TRACED BY	
QUANTITIES BY	
CHECKED BY	

STATE OF HAWAII
DEPARTMENT OF TRANSPORTATION
HIGHWAYS DIVISION

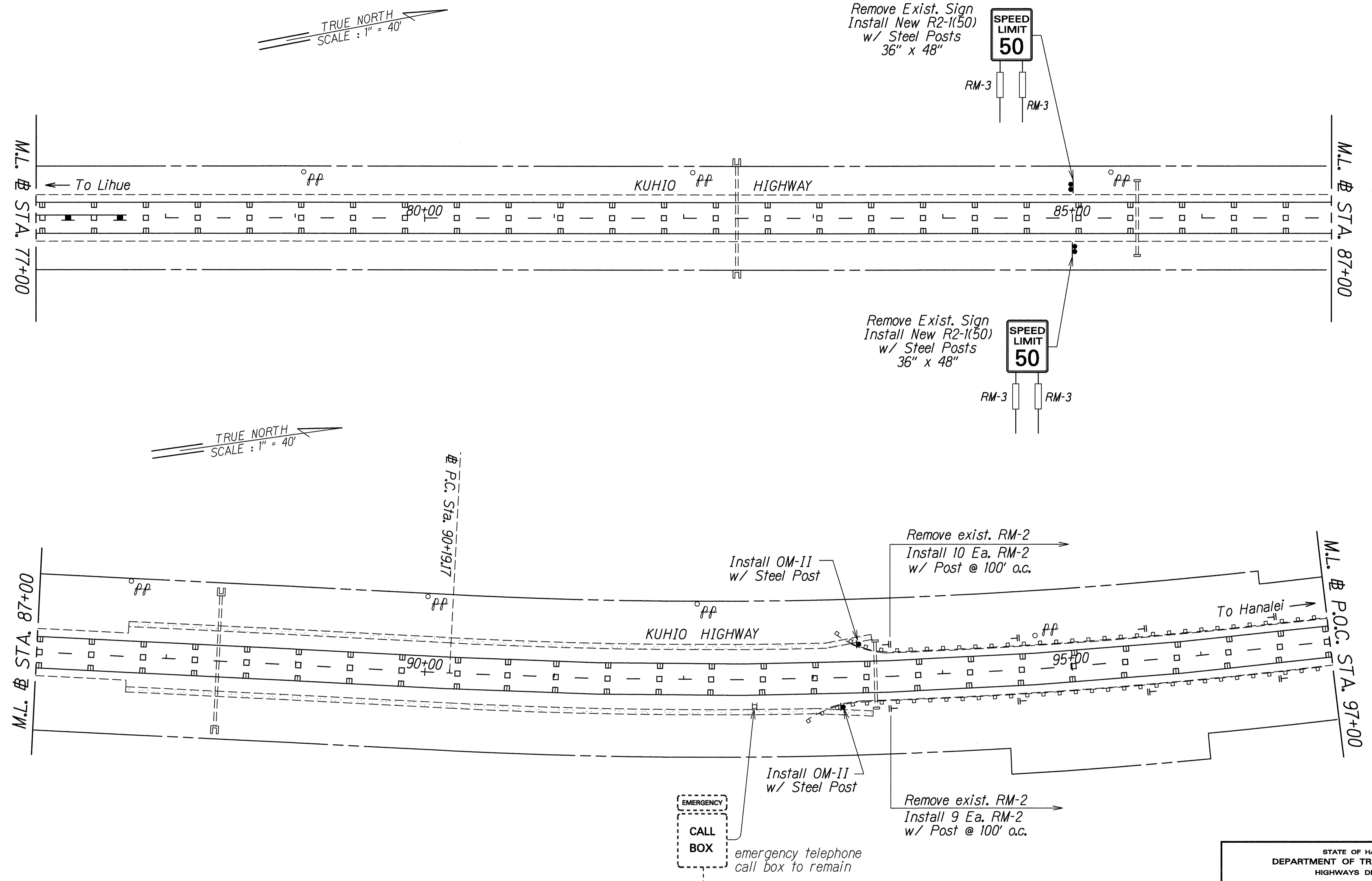
**PAVEMENT MARKING
& TRAFFIC SIGNING PLAN**

KUHIO HIGHWAY RESURFACING
Vicinity of Kumukumu to Aliomanu Road
Project No. 56BC-01-99M

Scale: 1"=40' Date: April, 1999

SHEET No. 1 OF 9 SHEETS

FED. ROAD DIST. NO.	STATE	PROJ. NO.	FISCAL YEAR	SHEET NO.	TOTAL SHEETS
HAWAII	HAW.	56BC-01-99M	1999	22	32

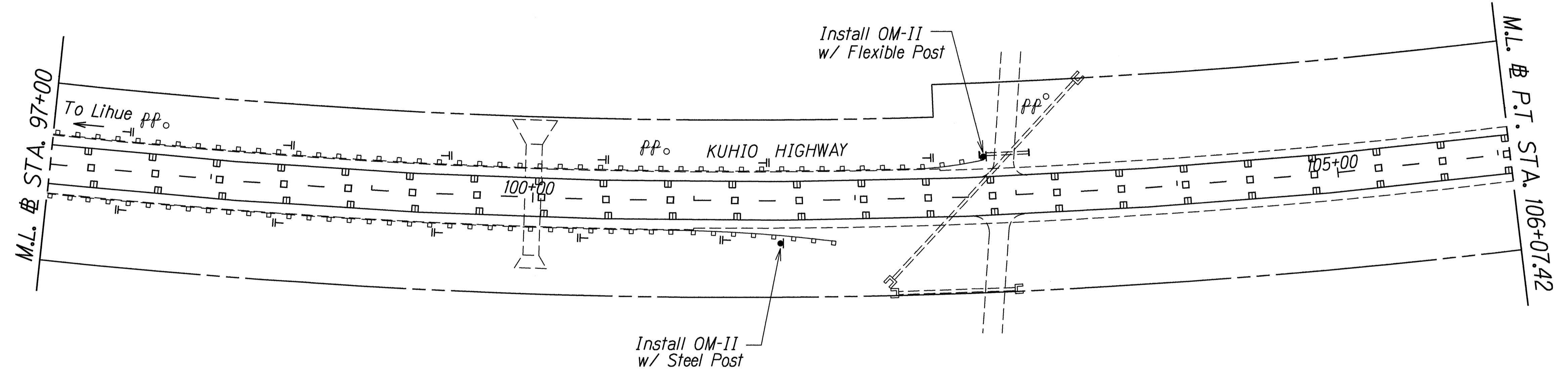


ORIGINAL PLAN
 SURVEY PLOTTED BY
 DRAWN BY
 NOTE BOOK
 DESIGNED BY
 CHECKED BY
 DATE: 4/27/99

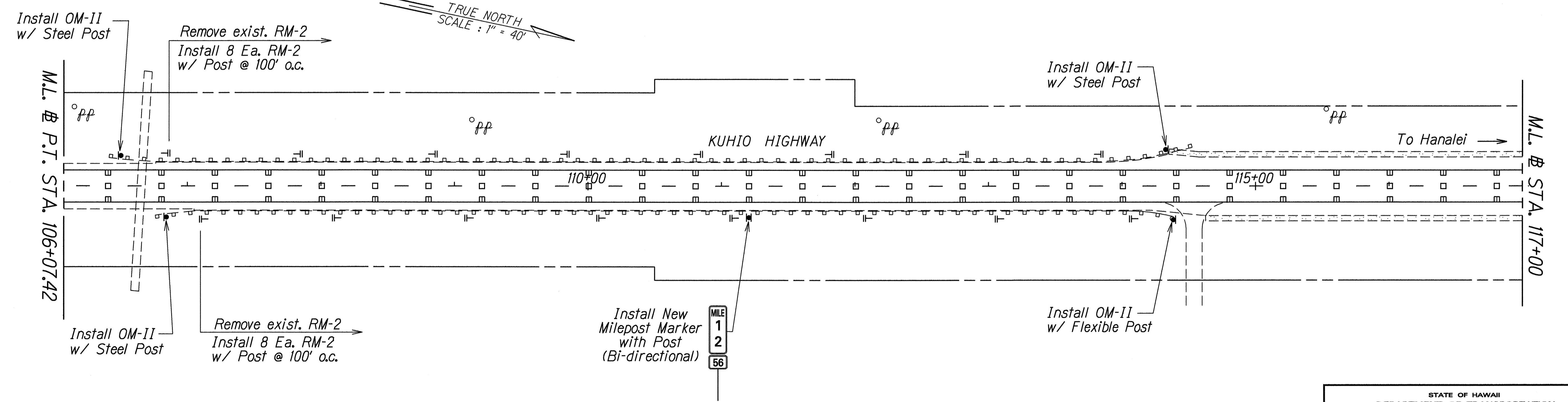
STATE OF HAWAII
 DEPARTMENT OF TRANSPORTATION
 HIGHWAYS DIVISION
PAVEMENT MARKING
& TRAFFIC SIGNING PLAN
 KUHIO HIGHWAY RESURFACING
 Vicinity of Kumukumu to Aliomanu Road
 Project No. 56BC-01-99M
 Scale: 1"=40' Date: April, 1999
 SHEET No. 2 OF 9 SHEETS

FED. ROAD DIST. NO.	STATE	PROJ. NO.	FISCAL YEAR	SHEET NO.	TOTAL SHEETS
HAWAII	HAW.	56BC-01-99M	1999	23	32

TRUE NORTH
SCALE: 1" = 40'



TRUE NORTH
SCALE: 1" = 40'



SURVEY PLOTTED BY	DATE
DRAWN BY	12/7/99
TRACED BY	
QUANTITIES BY	
CHECKED BY	
ORIGINAL PLAN	
NOTE BOOK	
FILE NO.	
PROJECT NO.	
CHECKED BY	

STATE OF HAWAII
DEPARTMENT OF TRANSPORTATION
HIGHWAYS DIVISION

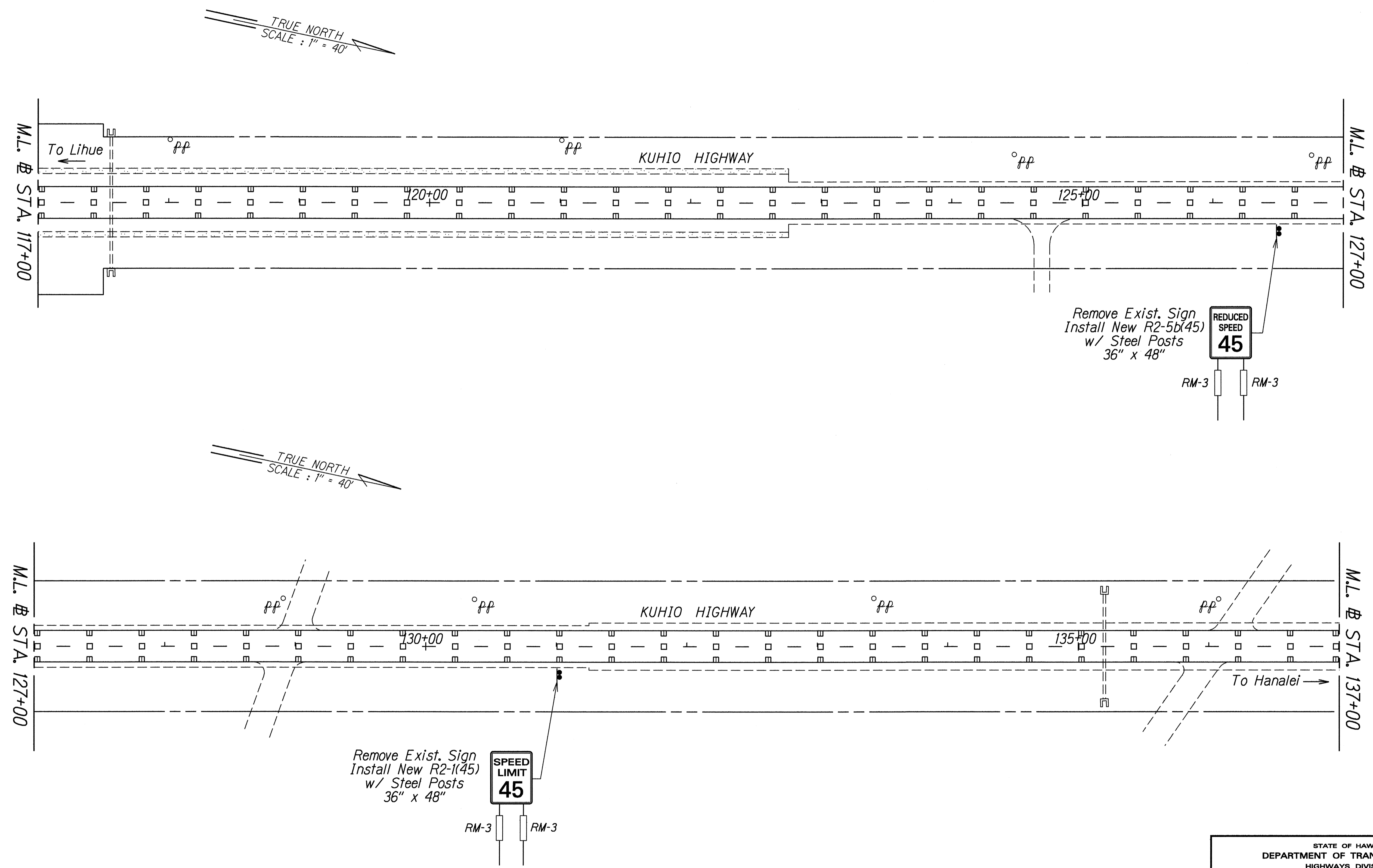
PAVEMENT MARKING
TRAFFIC SIGNING PLAN

KUHIO HIGHWAY RESURFACING
Vicinity of Kumukumu to Aliomanu Road
Project No. 56BC-01-99M

Scale: 1"=40' Date: April, 1999

SHEET No. 3 OF 9 SHEETS

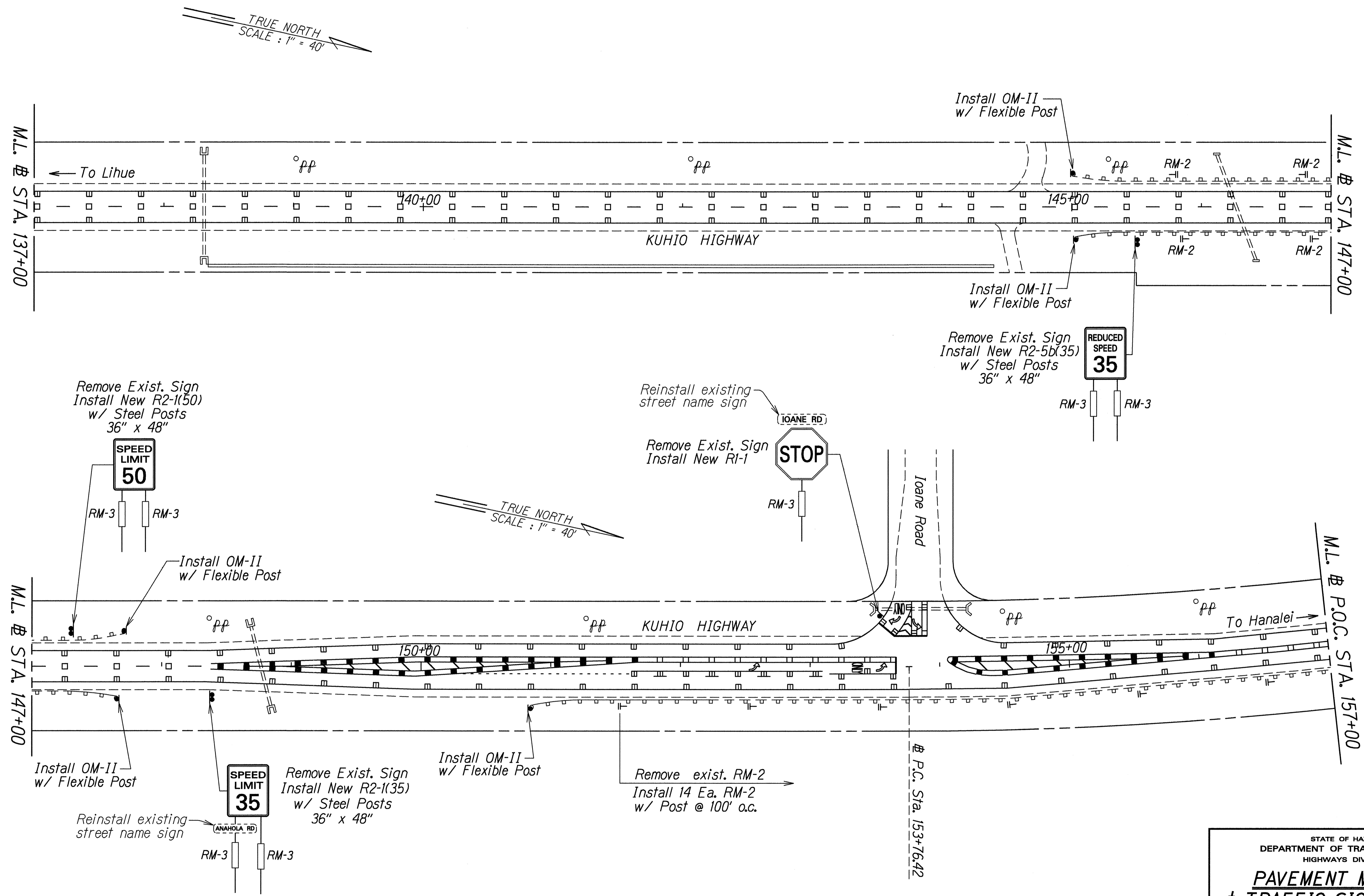
FED. ROAD DIST. NO.	STATE	PROJ. NO.	FISCAL YEAR	SHEET NO.	TOTAL SHEETS
HAWAII	HAW.	56BC-01-99M	1999	24	32



ORIGINAL PLAN
 SURVEY PLOTTED BY _____ DATE: 12/99
 DRAWN BY: R. Aoba
 NOTE BOOK NUMBER: _____
 TRANSMITTED BY: R. Aoba
 ORGANIZED BY: _____
 CHECKED BY: _____

STATE OF HAWAII
 DEPARTMENT OF TRANSPORTATION
 HIGHWAYS DIVISION
PAVEMENT MARKING
TRAFFIC SIGNING PLAN
 KUHIO HIGHWAY RESURFACING
 Vicinity of Kumukumu to Aliomanu Road
 Project No. 56BC-01-99M
 Scale: 1"=40' Date: April, 1999
 SHEET No. 4 OF 9 SHEETS

FED. ROAD DIST. NO.	STATE	PROJ. NO.	FISCAL YEAR	SHEET NO.	TOTAL SHEETS
HAWAII	HAW.	56BC-01-99M	1999	25	32



ORIGINAL PLAN	DATE
SURVEY PLOTTED BY	12/99
DRAWN BY	
DESIGNED BY	
QUANTITIES BY	
CHECKED BY	

STATE OF HAWAII
DEPARTMENT OF TRANSPORTATION
HIGHWAYS DIVISION

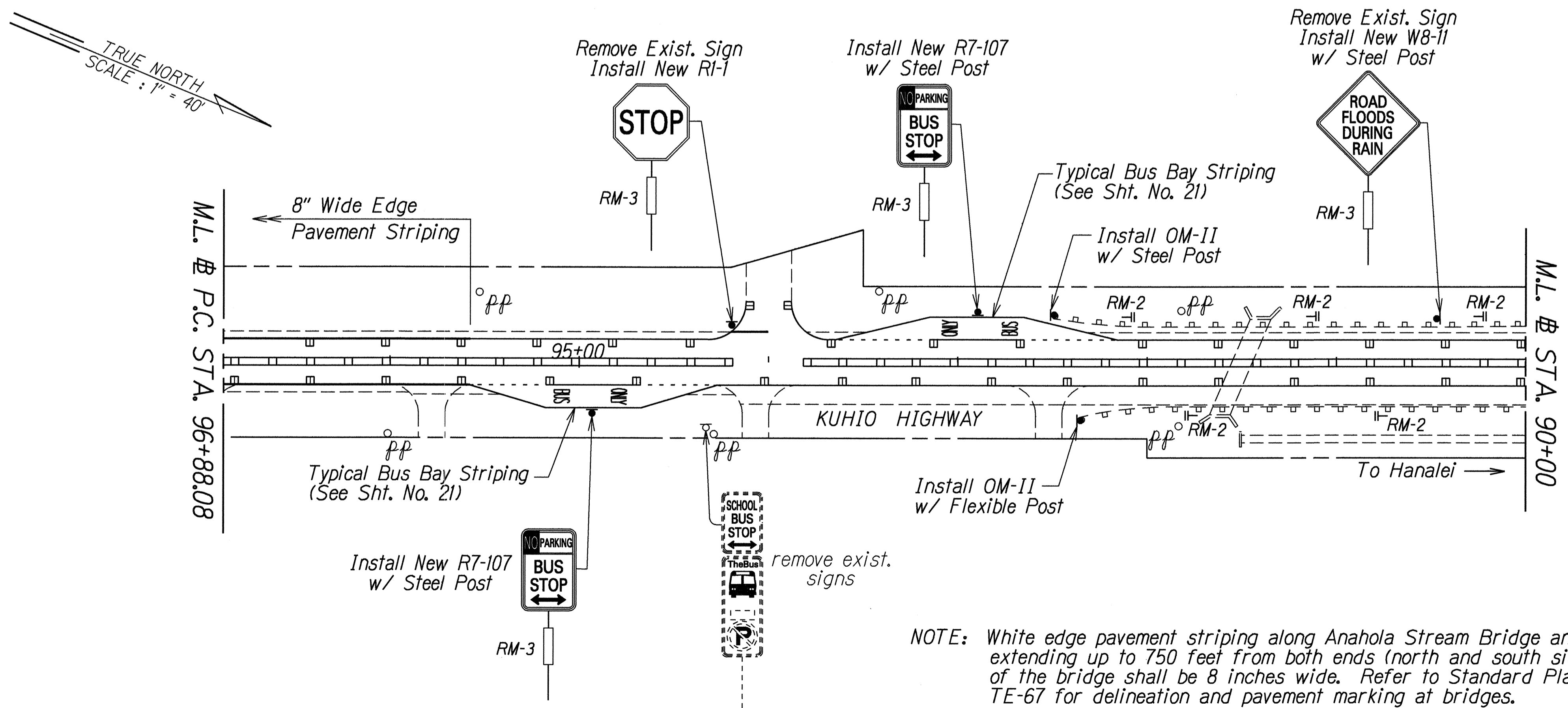
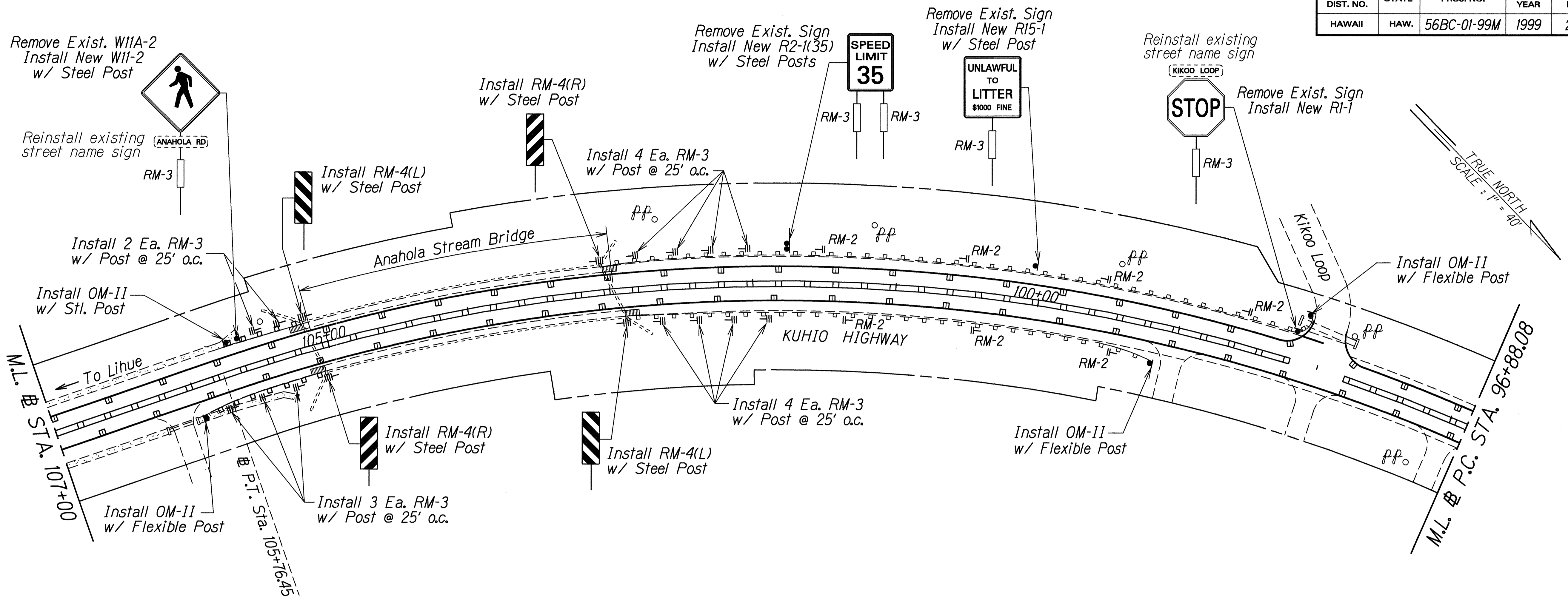
**PAVEMENT MARKING
& TRAFFIC SIGNING PLAN**

KUHIO HIGHWAY RESURFACING
Vicinity of Kumukumu to Aliomanu Road
Project No. 56BC-01-99M

Scale: 1"=40' Date: April, 1999

SHEET No. 5 OF 9 SHEETS

FED. ROAD DIST. NO.	STATE	PROJ. NO.	FISCAL YEAR	SHEET NO.	TOTAL SHEETS
HAWAII	HAW.	56BC-01-99M	1999	28	32



NOTE: White edge pavement striping along Anahola Stream Bridge and extending up to 750 feet from both ends (north and south sides) of the bridge shall be 8 inches wide. Refer to Standard Plan TE-67 for delineation and pavement marking at bridges.

DATE	1/27/99
SURVEY PLOTTED BY	...
DRAWN BY	...
DESIGNED BY	...
CHECKED BY	...

STATE OF HAWAII
DEPARTMENT OF TRANSPORTATION
HIGHWAYS DIVISION

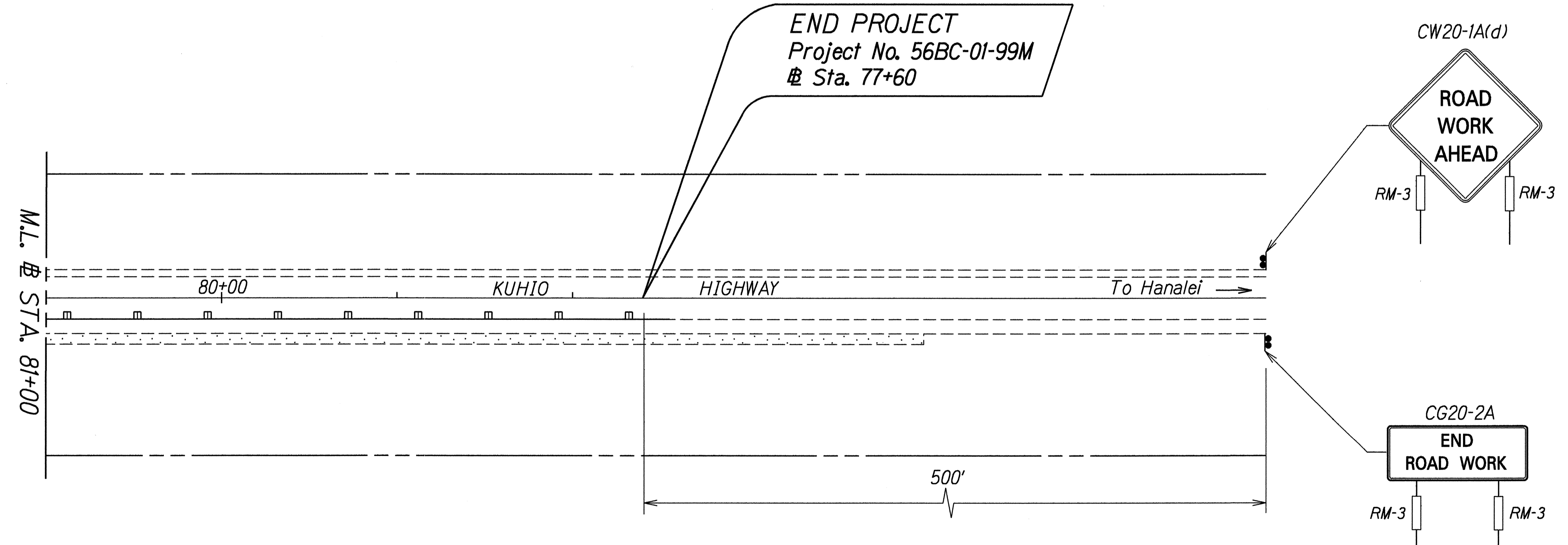
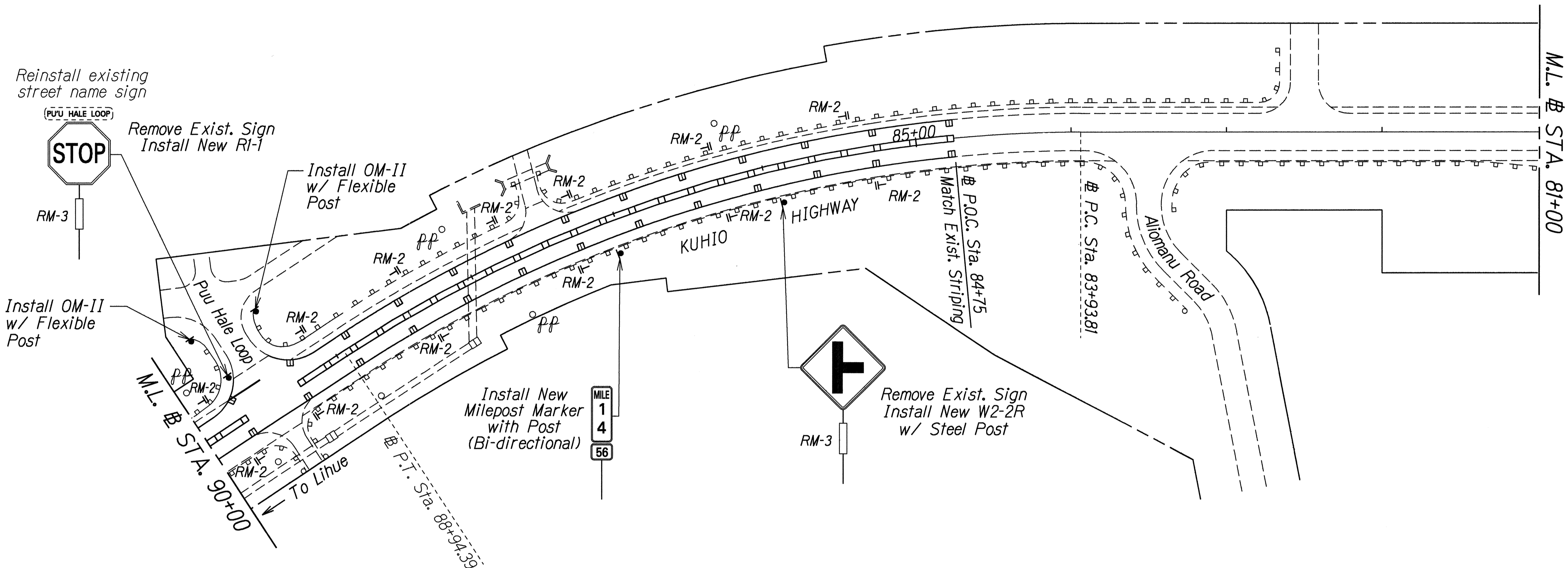
**PAVEMENT MARKING
& TRAFFIC SIGNING PLAN**

KUHIO HIGHWAY RESURFACING
Vicinity of Kumukumu to Aliomanu Road
Project No. 56BC-01-99M

Scale: 1"=40' Date: April, 1999

SHEET No. 8 OF 9 SHEETS

FED. ROAD DIST. NO.	STATE	PROJ. NO.	FISCAL YEAR	SHEET NO.	TOTAL SHEETS
HAWAII	HAW.	56BC-01-99M	1999	29	32



NOTE: At shoulder reconstruction area (# Sta. 80+90 to Sta. 77+60 o/s Rt.), edge pavement marking and striping shall be extended to where existing pavement marking and striping has been damaged by the reconstruction.

DATE	1/27/99
DESIGNED BY	R. A. BOG
TRACED BY	
QUANTITIES BY	
CHECKED BY	

STATE OF HAWAII
DEPARTMENT OF TRANSPORTATION
HIGHWAYS DIVISION

**PAVEMENT MARKING
& TRAFFIC SIGNING PLAN**

*KUHIO HIGHWAY RESURFACING
Vicinity of Kumukumu to Aliomanu Road
Project No. 56BC-01-99M*

Scale: 1"=40' Date: April, 1999

SHEET No. 9 OF 9 SHEETS