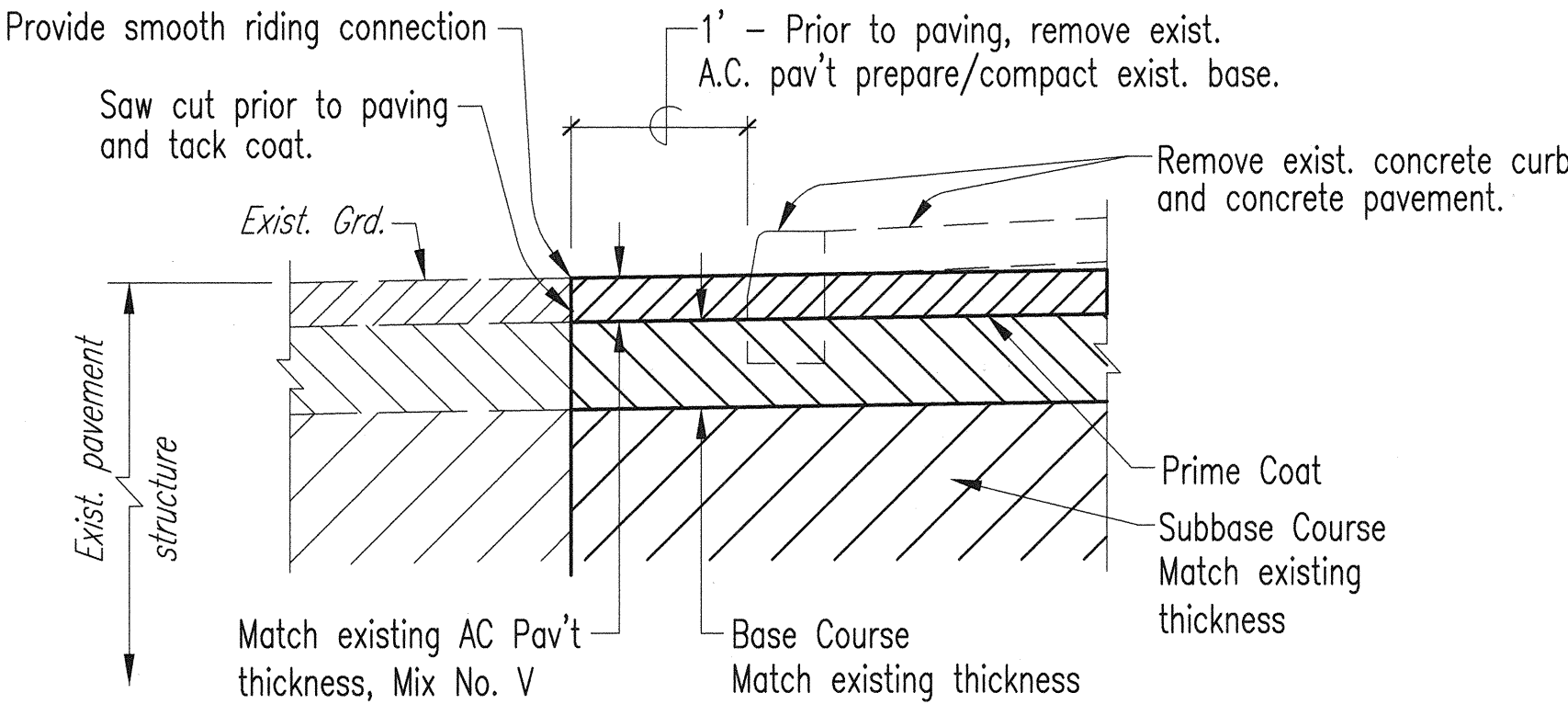


NOTES:

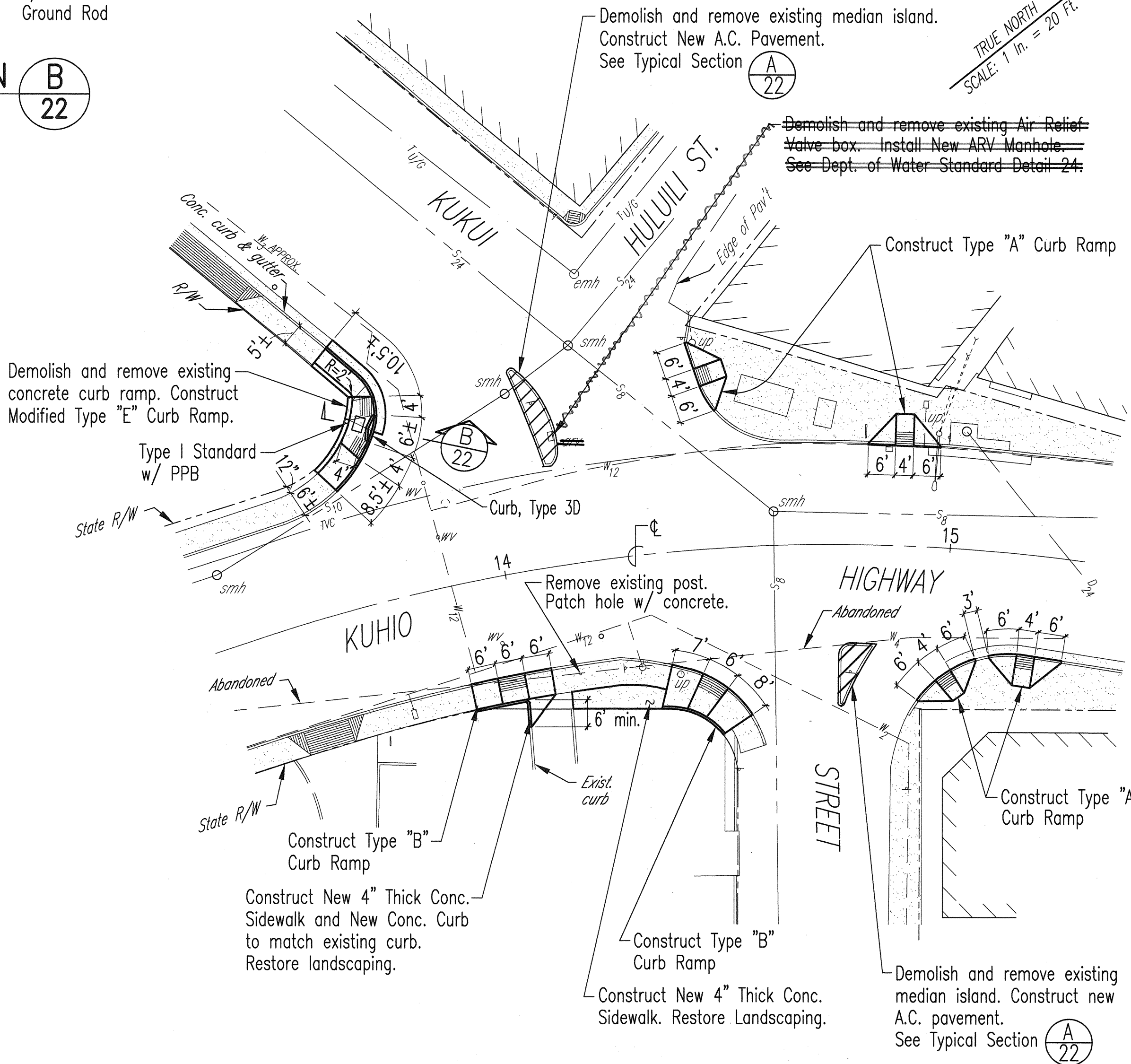
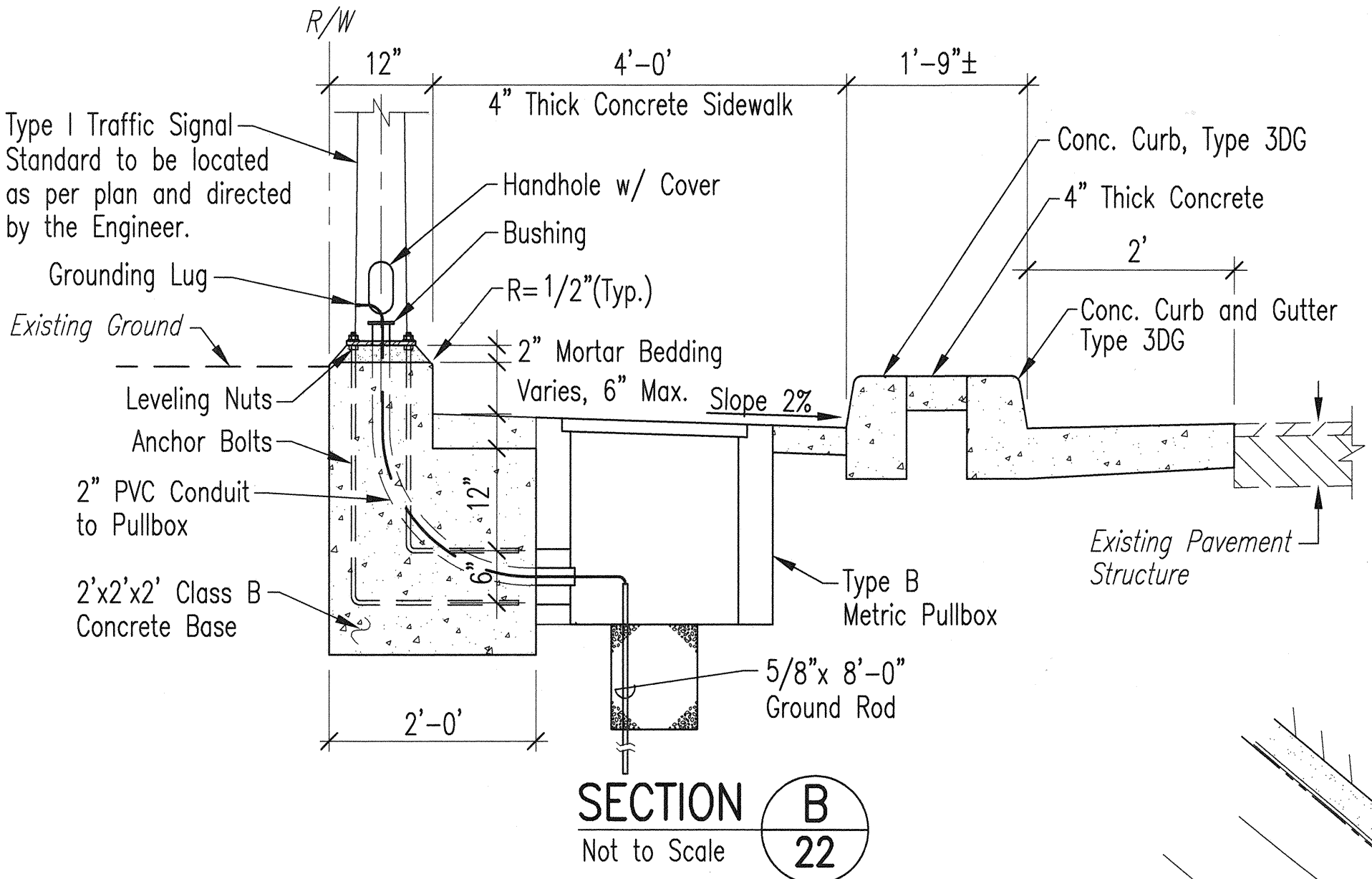
1. All cables and elements of grounding system shall be new.
2. All conduits shall be new.
3. Type 2 and Type 5 cables between signal face and TSPB are not called out on the intersection plan, but shall be furnished and installed in sufficient numbers and lengths, as required.
4. Type 5 cables shall be incidental to installation of signal faces.

CONDUIT AND CABLE SCHEDULE		
Designation	PVC Conduits	Cables
1	6 - 2"	1 - Type 1, Ground Wire 3 - Type 2 3 - Type 2 1 - Type 3 2 - Spare
2	7 - 2"	1 - Type 1, Ground Wire 3 - Type 2 3 - Type 2 1 - Type 3 2 - Type 7 2 - Spare
3	10 - 2"	1 - Type 1, Ground Wire 1 - Type 1 4 - Type 2 4 - Type 2 3 - Type 2 1 - Type 3 3 - Type 7 3 - Spare
4	1 - 2"	1 - Type 6
5	6 - 2"	1 - Type 1, Ground Wire 3 - Type 2 2 - Type 2 1 - Type 7 2 - Spare
6	1 - 2"	1 - Type 2
7	5 - 2"	1 - Type 1, Ground Wire 3 - Type 2 1 - Type 7 2 - Spare
8	5 - 2"	1 - Type 1, Ground Wire 1 - Type 2 1 - Type 7 2 - Spare
9	3 - 2"	1 - Type 1, Ground Wire 2 - Spare
10	2 - 2"	3 - Type 2 1 - Type 3
11	2 - 2"	1 - Type 2 1 - Type 3
12	5 - 2"	1 - Type 1, Ground Wire 4 - Type 2 1 - Type 3 2 - Spare
13	6 - 2"	1 - Type 1, Ground Wire 3 - Type 2 3 - Type 2 1 - Type 3 2 - Spare

LIST OF MATERIALS				
Pole Letter	Standard Type	Signal Head No.	Mounting Type	Signal Faces & Opticom Receivers
A	I-10	1	Slipfitter, One-Way	R Y G $\leftarrow \frac{G}{Y}$
		2	Pole Bracket, One-Way	H - M
B	II-20	1	Polebracket, One-Way	R Y G
		2	Mast Arm, One-Way	R Y G
			Mast Arm (Hor.)	Opticom
			Mast Arm (Hor.)	Opticom
C	I-10	1	Slipfitter, One-Way	R Y \rightarrow
		2	Pole Bracket, One-Way	H - M
D	I-10	1	Slipfitter, Two-Way	R Y \rightarrow
		2	Slipfitter, Two-Way	R Y G
E	I-10	1	Slipfitter, One-Way	R Y G
		2	Pole Bracket, One-Way	H - M
		3	Pole Bracket, One-Way	H - M
F	II-35	1	Mast Arm, One-Way	R Y G $\leftarrow \frac{G}{Y}$
		2	Mast Arm, One-Way	R Y G
		3	Mast Arm, One-Way	R Y G
		4	Pole Bracket, One-Way	R Y G
		5	Pole Bracket, One-Way	H - M
			Mast Arm (Hor.)	Opticom
G	I-10	1	Slipfitter, Two-Way	R Y G
		2	Slipfitter, Two-Way	R Y G
		3	Pole Bracket, One-Way	H - M
H	I-10	1	Slipfitter, One-Way	R Y G
		2	Pole Bracket, One-Way	H - M
		3	Pole Bracket, One-Way	H - M



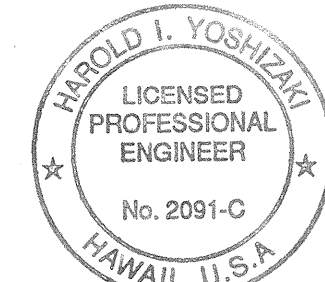
AC PAVEMENT - TYPICAL SECTION A 22
Not to Scale



PLAN - INTERSECTION IMPROVEMENTS

Scale: 1" = 20'

9/10/98	Revised "Conduit and Cable Schedule" and "List of Materials" tables. Added two Type "A" Curb Ramps crossing Kuhio Hwy; added dimensions of curb ramps; added new 4" thick concrete sidewalk; delete new concrete island; and add Modified Type "E" Curb Ramp on "Plan-Intersection Improvements."
DATE	REVISION



THIS WORK WAS PREPARED BY ME OR UNDER MY SUPERVISION.
Harold I. Yoshizaki
SHIMABUKURO, ENDOKA YOSHIZAKI, INC.
1126 12th Avenue
Honolulu, Hawaii 96816

FED. ROAD DIST. NO.	STATE	FED. AID PROJ. NO.	FISCAL YEAR	SHEET NO.	TOTAL SHEETS
HAWAII	HAW.	STP-056-1(39)	1998	22	28

NOTES:

1. See "Marking, Signing and Striping Plan at Kukui St." for relocation and/or removal of signs.
2. The Contractor shall construct new sidewalks to match surface finish of existing sidewalks.
3. The Contractor shall score new sidewalks to match spacing of score lines on existing sidewalks.
4. The following shall not be measured separately for payment but shall be considered incidental to various items of work.
 - a. Removal of existing concrete island.
 - b. Restoration of existing landscaping.

STATE OF HAWAII
DEPARTMENT OF TRANSPORTATION
HIGHWAYS DIVISION
PLAN - INTERSECTION IMPROVEMENTS

KUHIO HIGHWAY
TRAFFIC SIGNAL MODERNIZATION
FED. AID PROJECT NO. STP-056-1(39)

SCALE: AS SHOWN DATE:

SHEET No. 1 OF 1 SHEETS