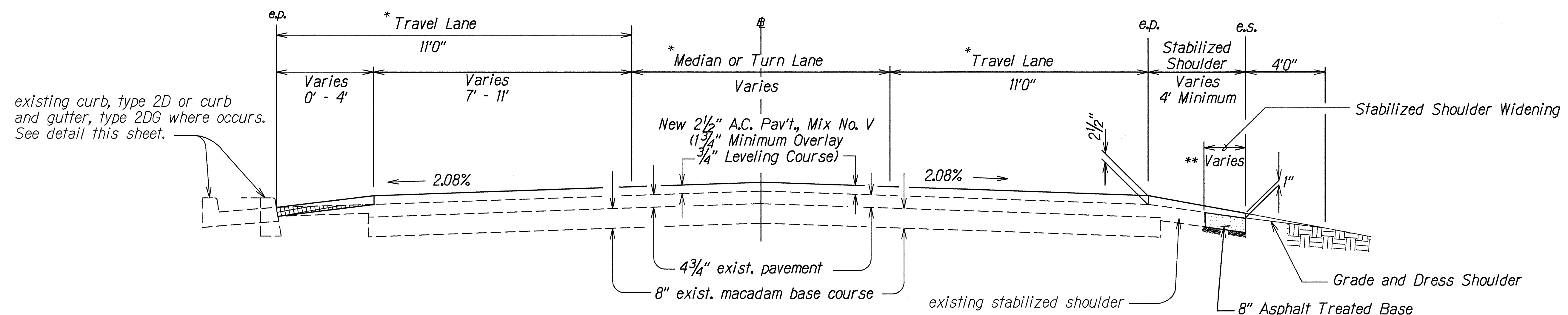
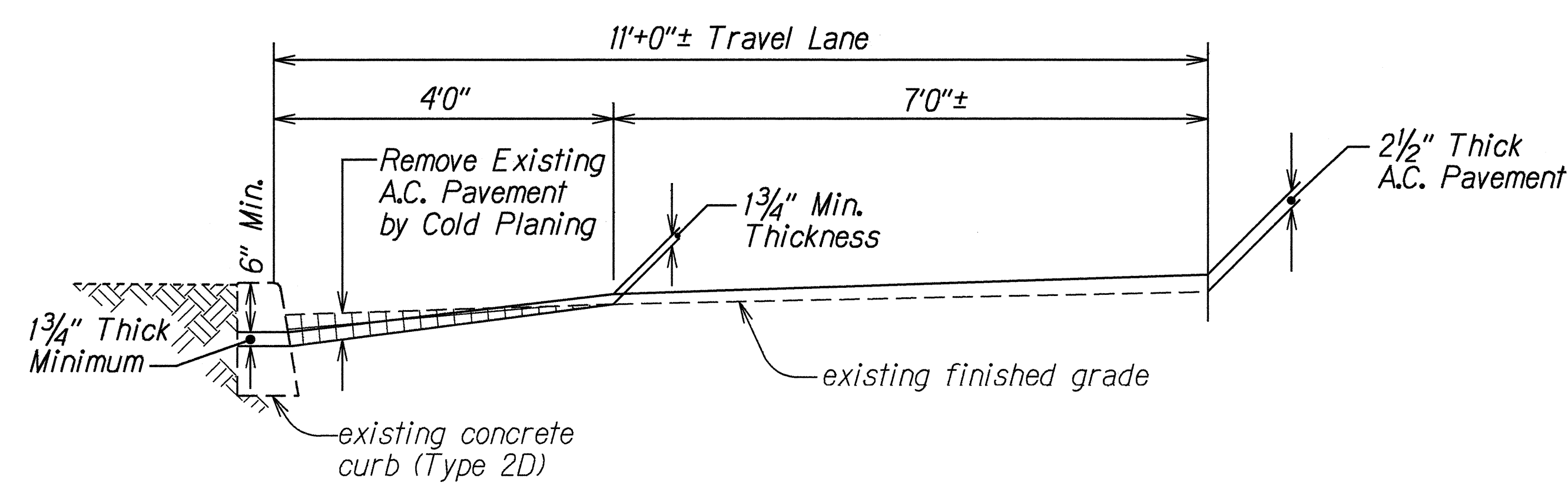


FED. ROAD DIST. NO.	STATE	FED. AID PROJ. NO.	FISCAL YEAR	SHEET NO.	TOTAL SHEETS
HAWAII	HAW.	STP-056-1(37)	1995	5	24

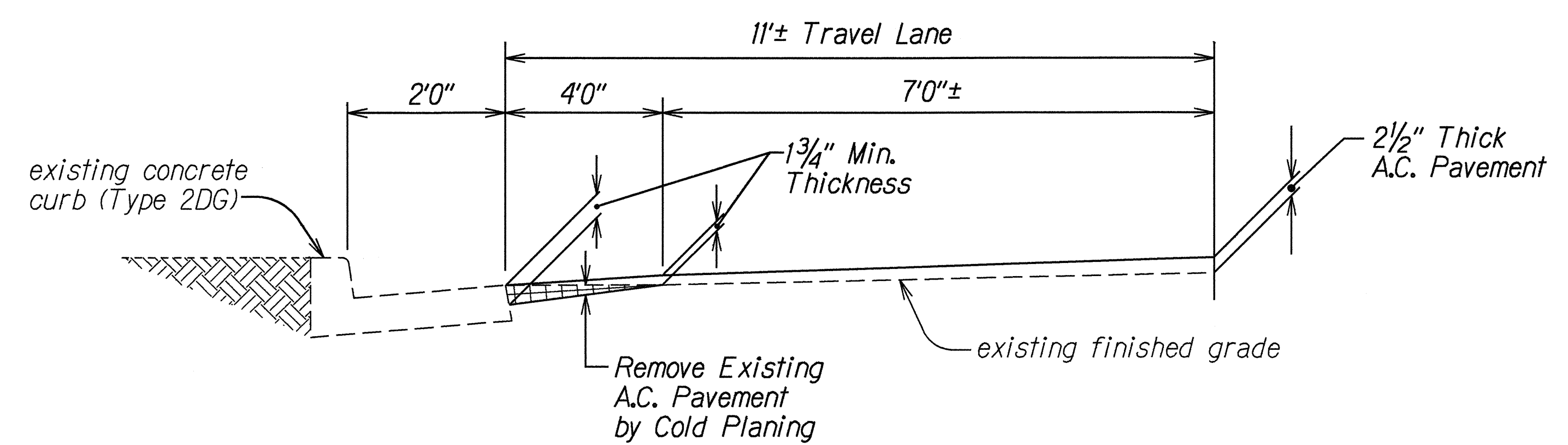


- \* All laneage stripings and median island stripings shall be measured off the base line.
- \*\* Construct Widened Stabilized Shoulder to meet 4' minimum Shoulder Width.

**TYPICAL MULTIPLE LANE SECTION**  
Not To Scale



**@ TYPE 2D CURB LOCATIONS**  
Not to Scale



**@ TYPE 2DG CURB LOCATIONS**  
Not to Scale

**COLD PLANING & RESURFACING**  
**@ EXISTING CURB LOCATIONS**  
Not To Scale

NOTE: Transition between regular resurfacing (non-curbed) sections and curbed sections shall be gradual, i.e. transition sections shall be smooth riding with no abrupt changes in the finished surface.

SURVEY PLOTTED BY	DATE
DRAWN BY	Sept. 94
TRACED BY	
CHECKED BY	
QUANTITIES BY	
ORIGINAL PLAN	
NOTE BOOK	
KEY	
CHECKED BY	

STATE OF HAWAII  
DEPARTMENT OF TRANSPORTATION  
HIGHWAYS DIVISION

**TYPICAL SECTIONS**

KUHIO HIGHWAY RESURFACING  
WAILUA TO KAPAA  
Fed. Aid Proj. No. STP-056-1(37)

Scale: As Shown      Date: Apr., 1995

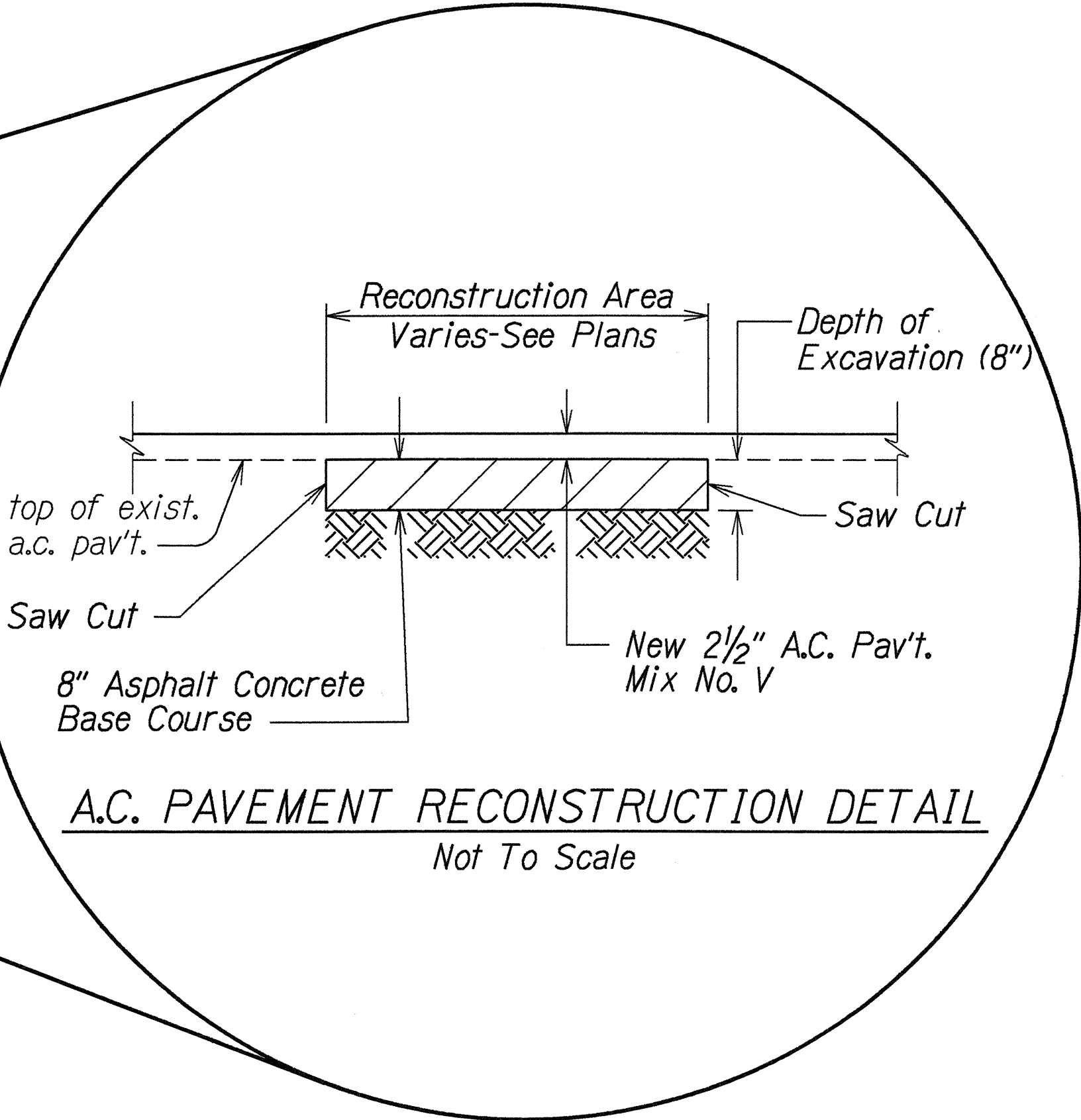
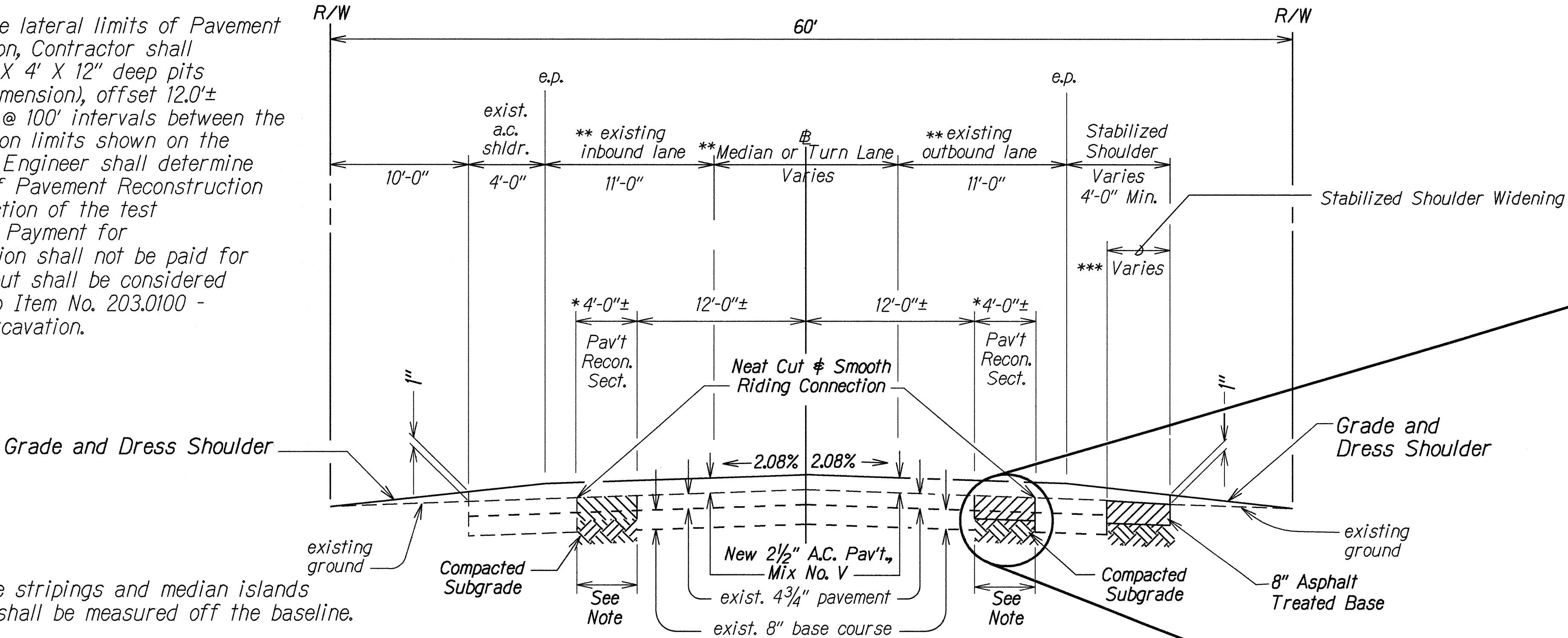
SHEET No. 1 OF 5 SHEETS

FED. ROAD DIST. NO.	STATE	FED. AID PROJ. NO.	FISCAL YEAR	SHEET NO.	TOTAL SHEETS
HAWAII	HAW.	STP-056-1(37)	1995	6	24

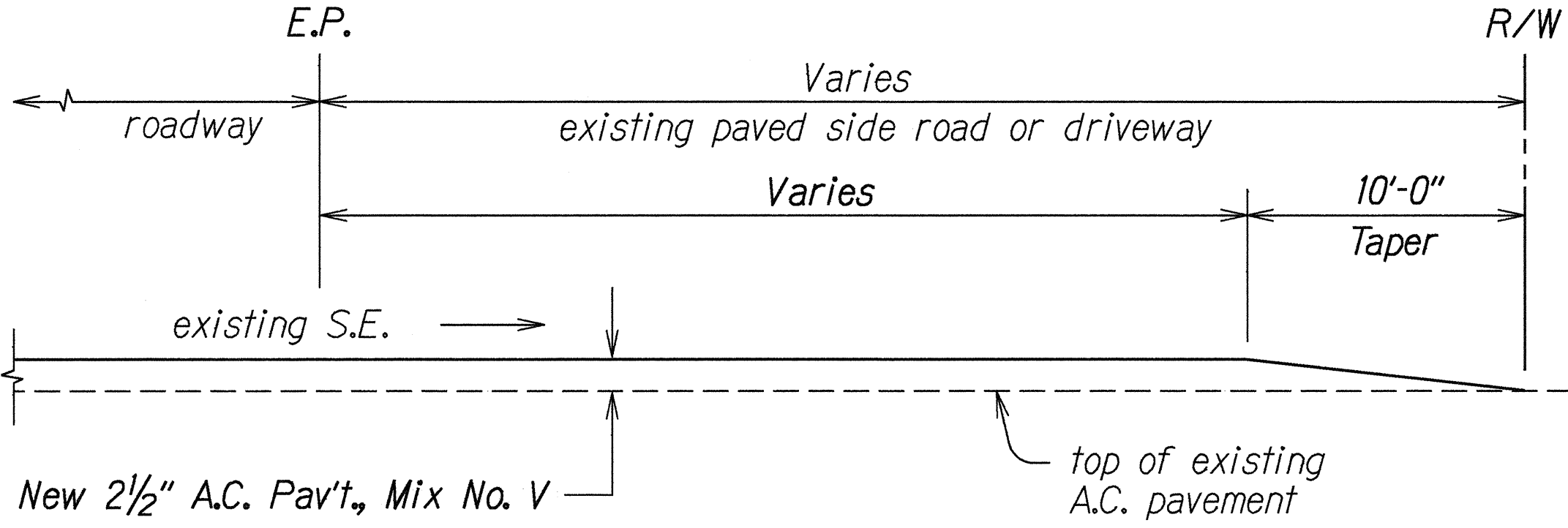
\* To determine lateral limits of Pavement Reconstruction, Contractor shall excavate 4' X 4' X 12" deep pits (minimum dimension), offset 12.0'± from the  $\#$  @ 100' intervals between the reconstruction limits shown on the plans. The Engineer shall determine the limits of Pavement Reconstruction after inspection of the test excavation. Payment for test-excavation shall not be paid for separately but shall be considered incidental to Item No. 203.0100 - Roadway Excavation.

\*\* All laneage stripings and median islands stripings shall be measured off the baseline.

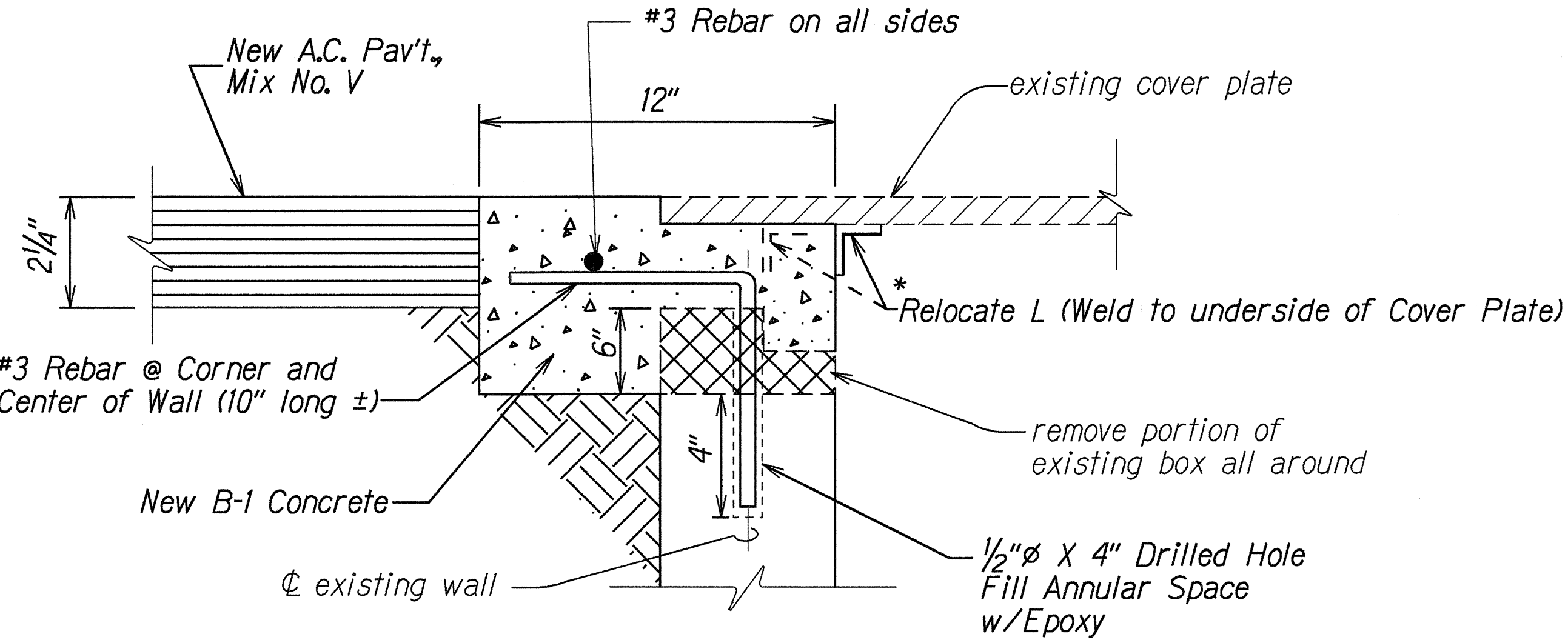
\*\*\* Construct Widened Stabilized Shoulder to meet 4' min. Shoulder Width.



TYPICAL PAVEMENT RECONSTRUCTION SECTION  
Sta. 430+00± to Sta. 471+75± (Lt.S)  
Sta. 443+75± to Sta. 472+50± (Rt.S)  
Not To Scale



A. C. RESURFACING AT PAVED SIDEROAD OR PAVED DRIVEWAY DETAIL  
Not To Scale



UTILITY BOX ADJUSTMENT DETAIL  
Not To Scale

NOTE: When shown on the plans, driveways and/or public roadways shall be cold planed prior to resurfacing.

\*NOTE: For utility boxes with cover frames, the Contractor shall remove and adjust the frames to the new finished grade by embedding the frame in new concrete section as shown above

STATE OF HAWAII  
DEPARTMENT OF TRANSPORTATION  
HIGHWAYS DIVISION

TYPICAL SECTIONS & DETAILS

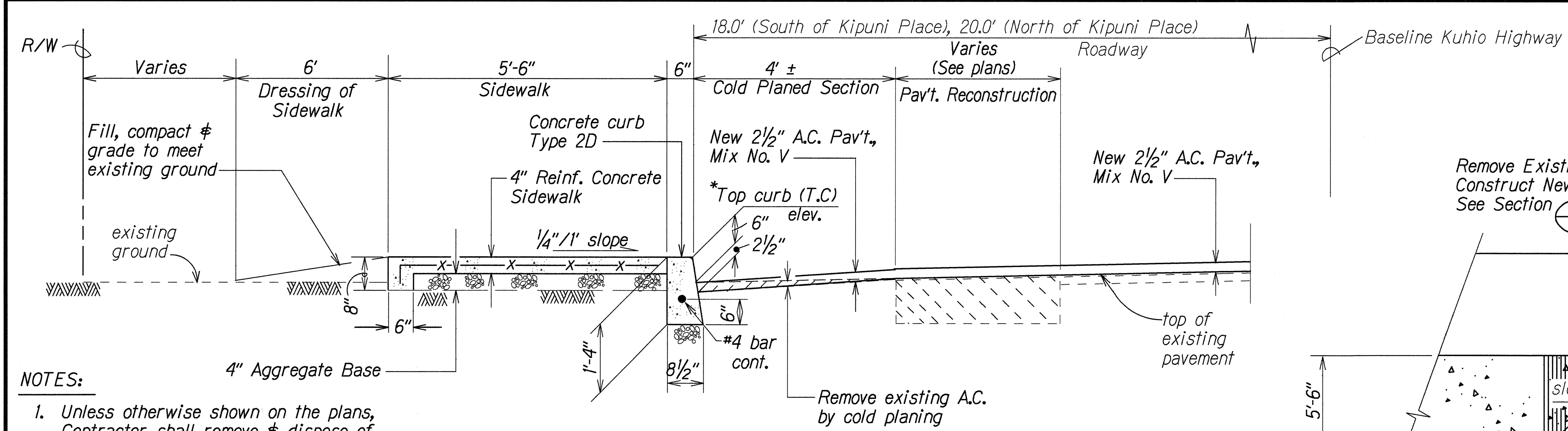
KUHIO HIGHWAY RESURFACING  
WAILUA TO KAPAA  
Fed. Aid Proj. No. STP-056-1(37)

Scale: As Shown
Date: Apr., 1995

SHEET No. 2 OF 5 SHEETS

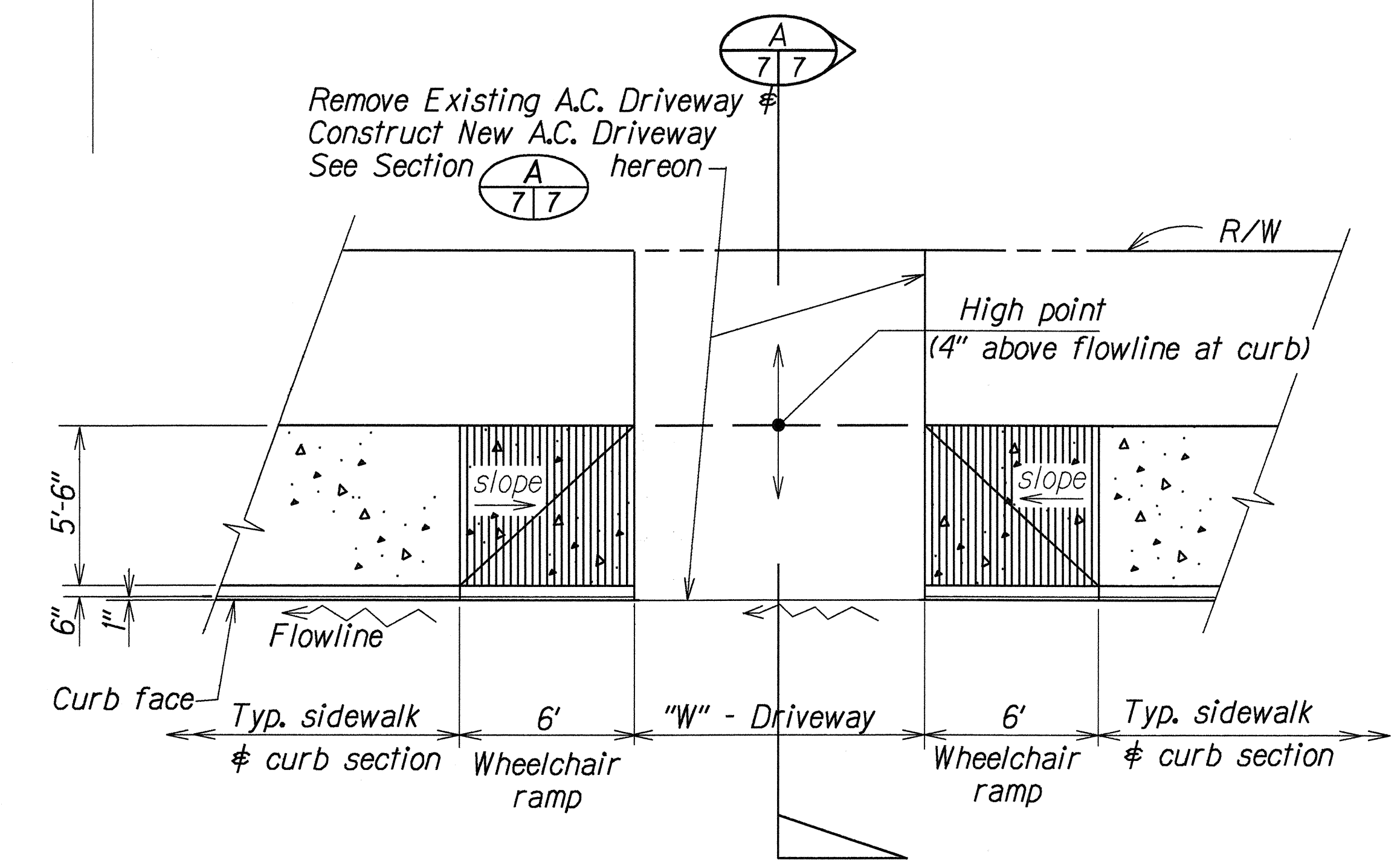


FED. ROAD DIST. NO.	STATE	FED. AID PROJ. NO.	FISCAL YEAR	SHEET NO.	TOTAL SHEETS
HAWAII	HAW.	STP-056-1(37)	1995	7	24

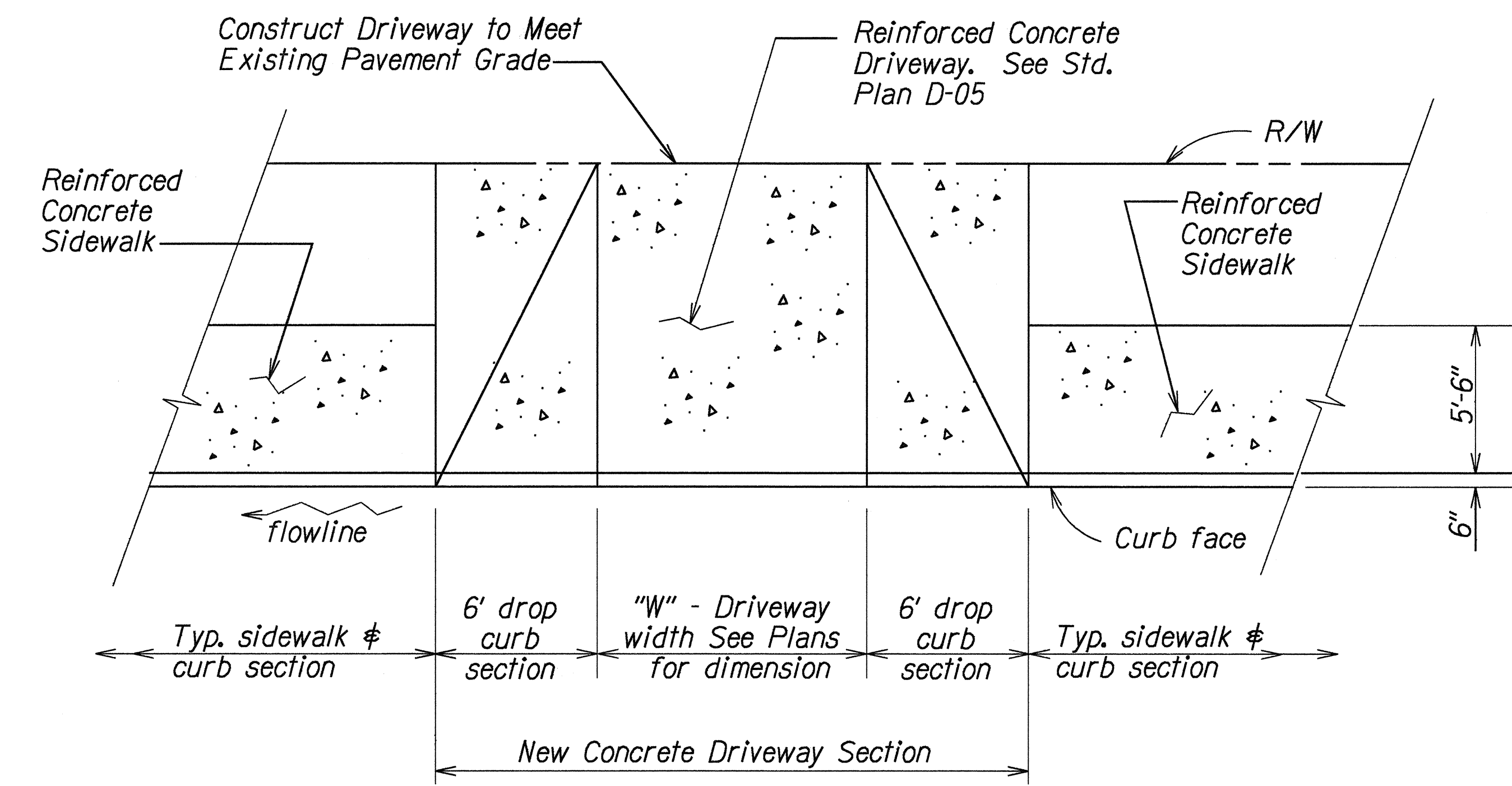


- NOTES:
1. Unless otherwise shown on the plans, Contractor shall remove & dispose of existing concrete sidewalk, curbs, & driveways between Sta. 485+73 ± and Sta. 517+67 ± (o/s left)
  - \* 3. For Top of Curb (TC) Elevations, See Plan Sheet No. 14&15. During resurfacing, the Contractor shall insure that flowline along the curb face is maintained.

**TYPICAL CONCRETE SIDEWALK & CURB SECTION**  
 Scale: 3/4" = 1' - 0'

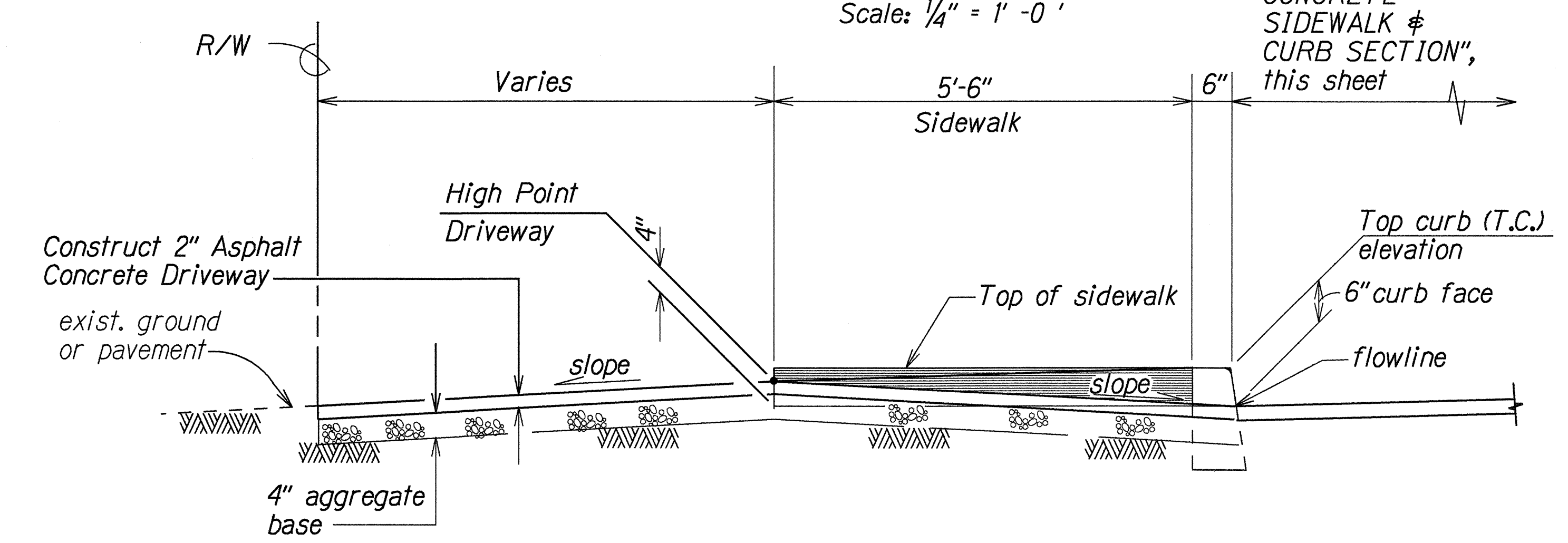


**PLAN-MODIFIED TYPE "B" WHEELCHAIR RAMPS AT A.C. DRIVEWAYS**  
 Scale: 1/4" = 1' - 0'



NOTE: For "W" = 10', thickness of driveway section ("T") = 4"  
 For "W" = 22', thickness of driveway section ("T") = 6"

**PLAN-CONCRETE DRIVEWAY**  
 Scale: 1/4" = 1' - 0'



**SECTION A**  
 Scale: 3/4" = 1' - 0'

STATE OF HAWAII

DEPARTMENT OF TRANSPORTATION

HIGHWAYS DIVISION

TYPICAL DETAILS

KUHIO HIGHWAY RESURFACING

WAILUA TO KAPAA

Fed. Aid Proj. No. STP-056-1(37)

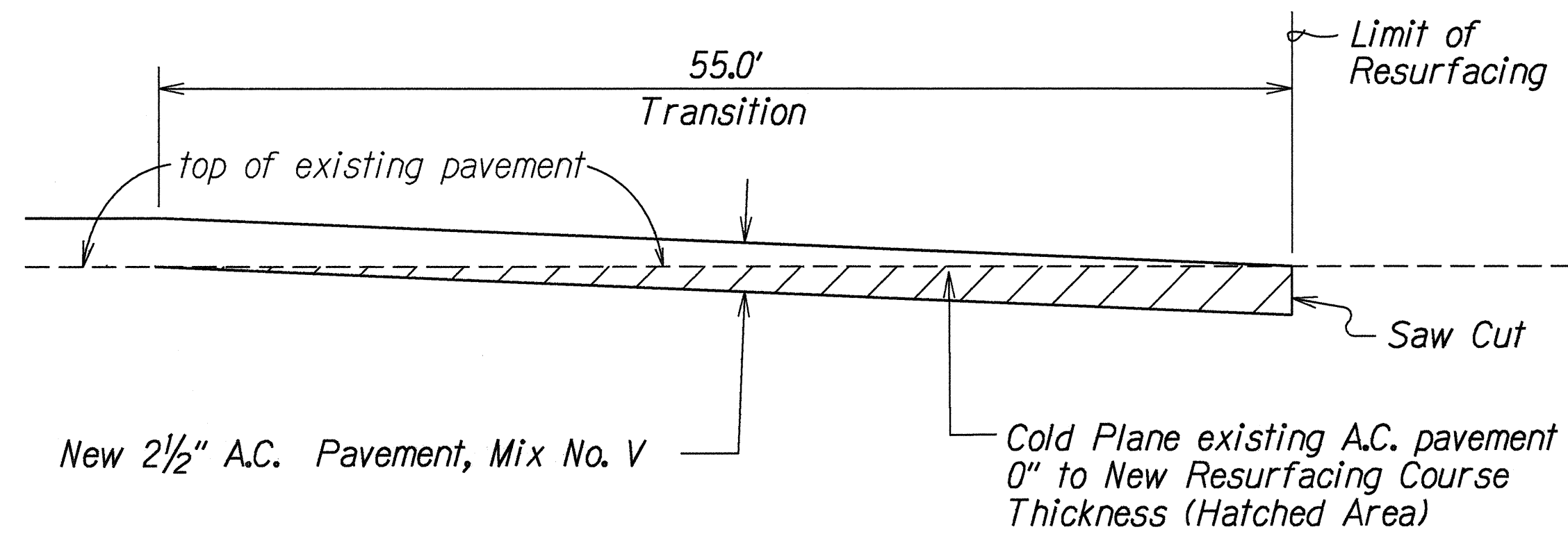
Scale: As Shown

Date: Apr., 1995

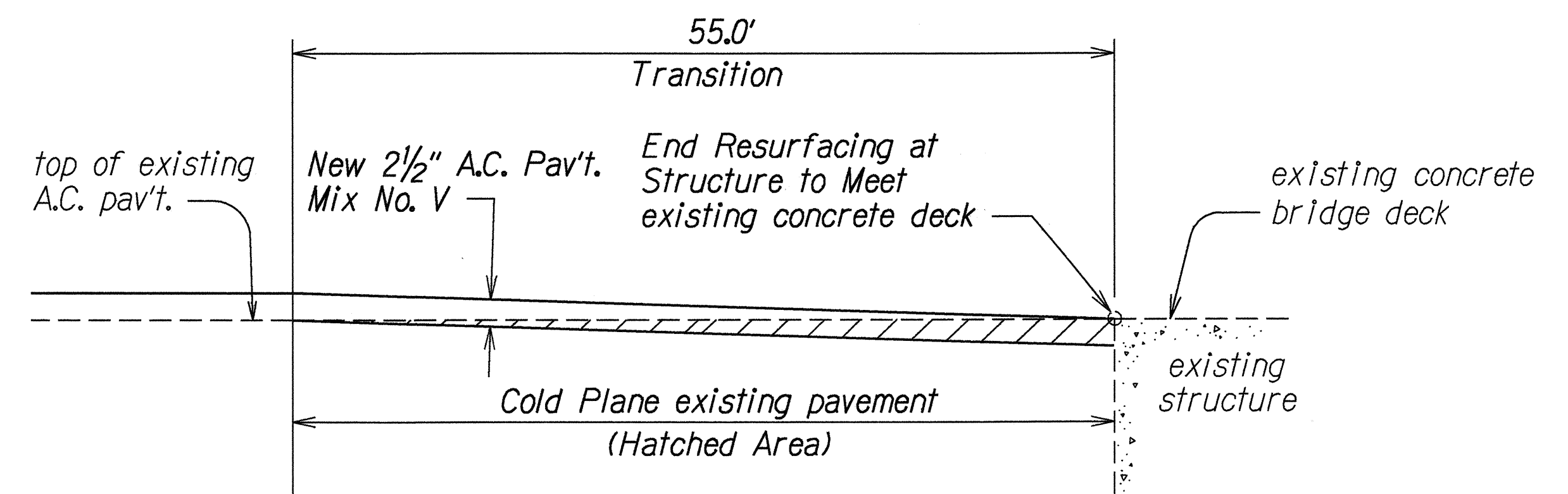
SHEET No. 3 OF 5 SHEETS

ORIGINAL PLAN	DATE	1
SURVEY PLOTTED BY		
DRAWN BY		
NOTES		
DESIGNED BY		
CHECKED BY		

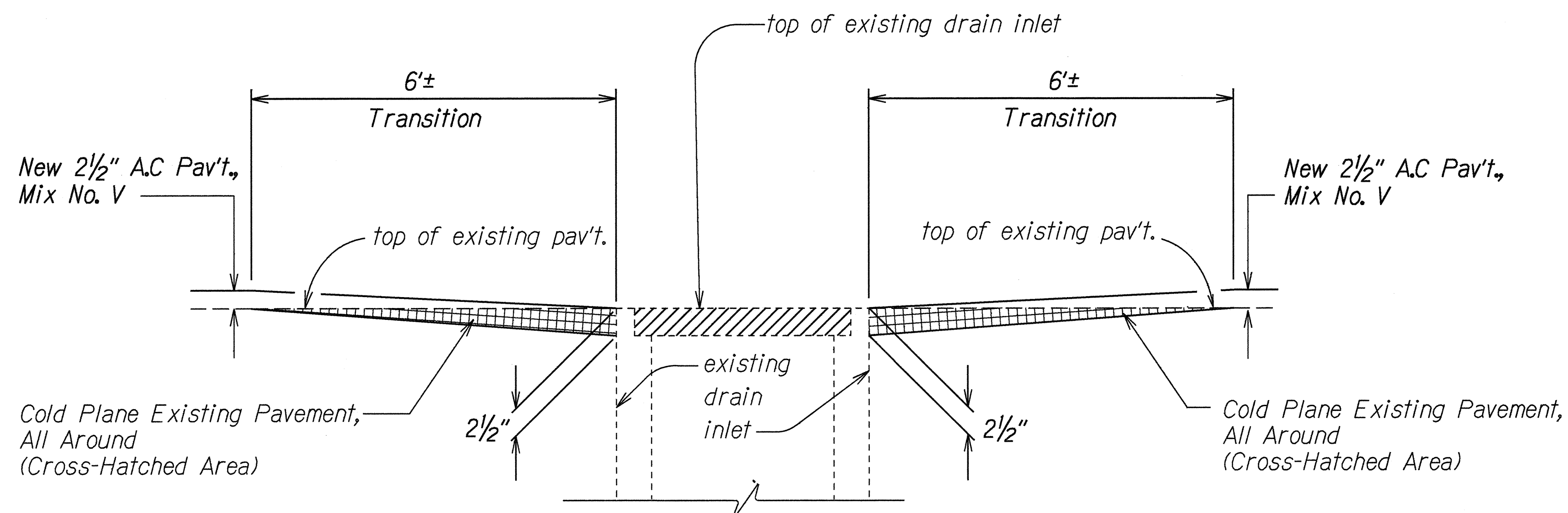
FED. ROAD DIST. NO.	STATE	FED. AID PROJ. NO.	FISCAL YEAR	SHEET NO.	TOTAL SHEETS
HAWAII	HAW.	STP-056-1(37)	1995	8	24



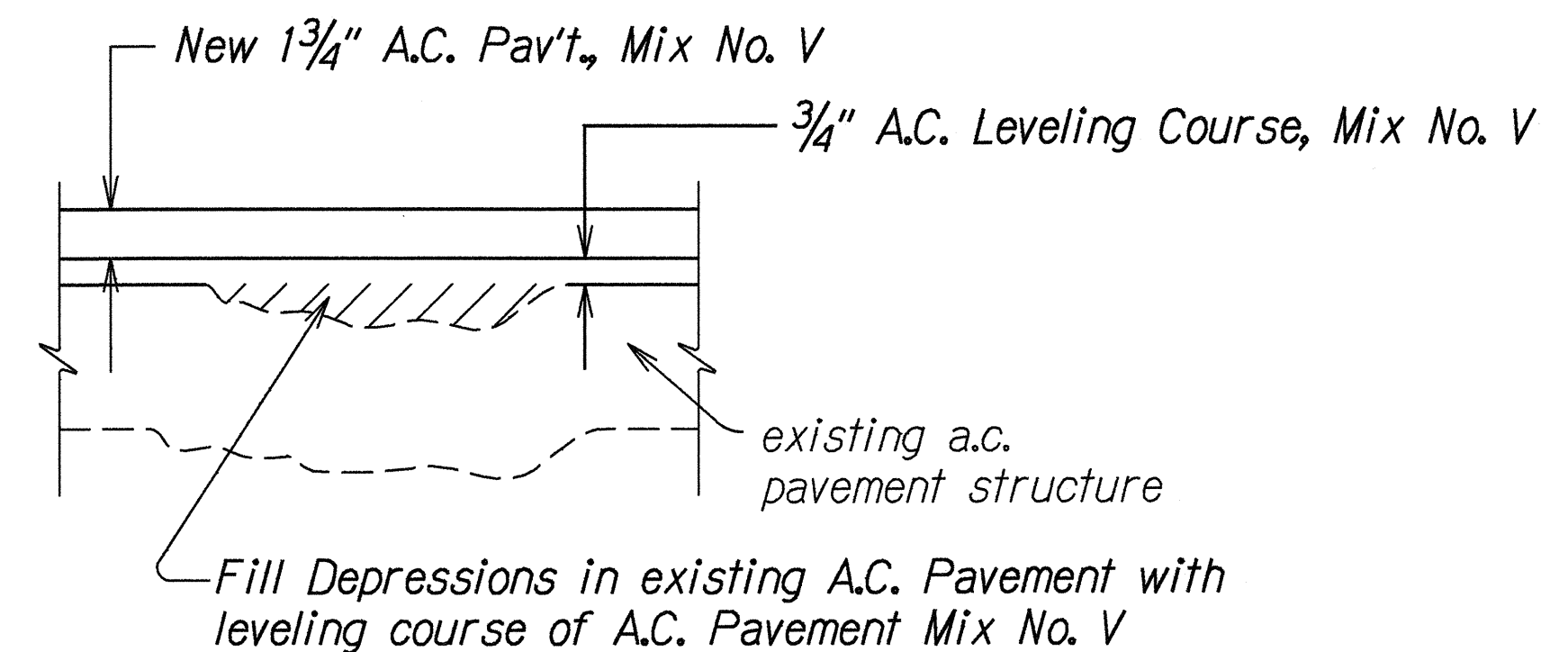
**COLD PLANED TRANSITION  
TO EXISTING A.C. PAVEMENT  
AT BEGINING AND END OF PROJECT**  
Not To Scale



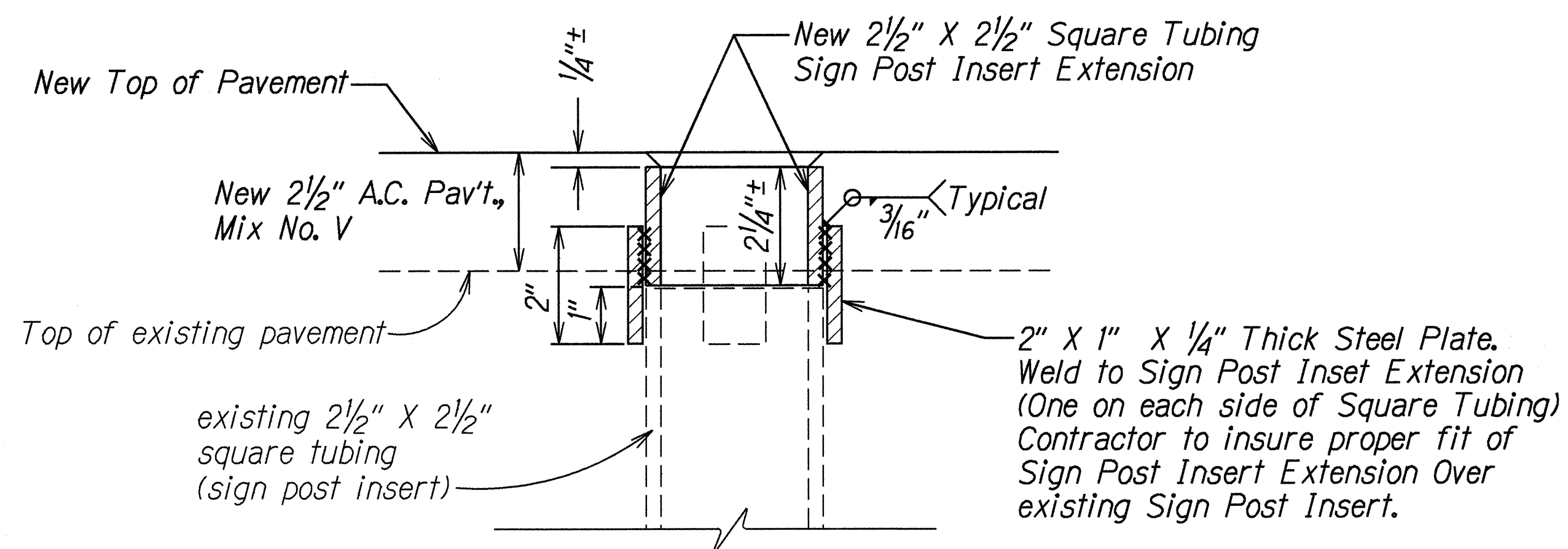
**COLD PLANED TRANSITION AT STRUCTURE**  
Not to Scale



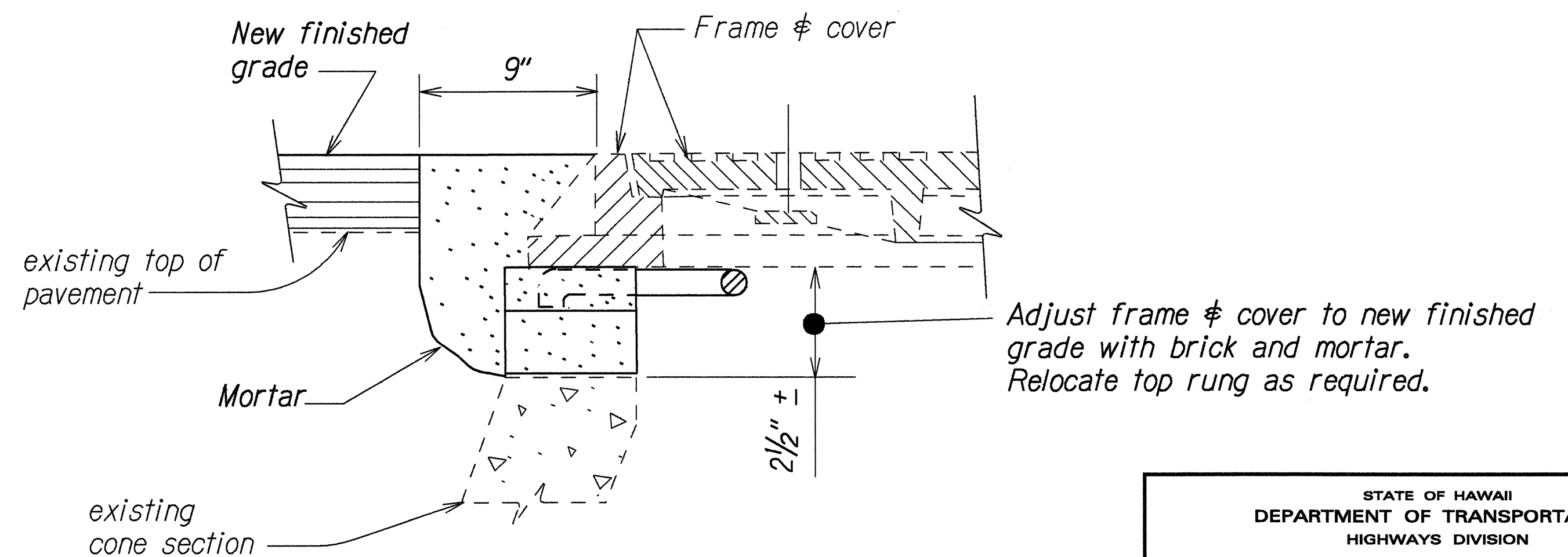
**COLD PLANED TRANSITION @ DRAIN INLETS**  
Not To Scale



**LEVELING COURSE DETAIL**  
Not To Scale



**DETAIL-SIGN POST INSERT EXTENSION**  
Not To Scale

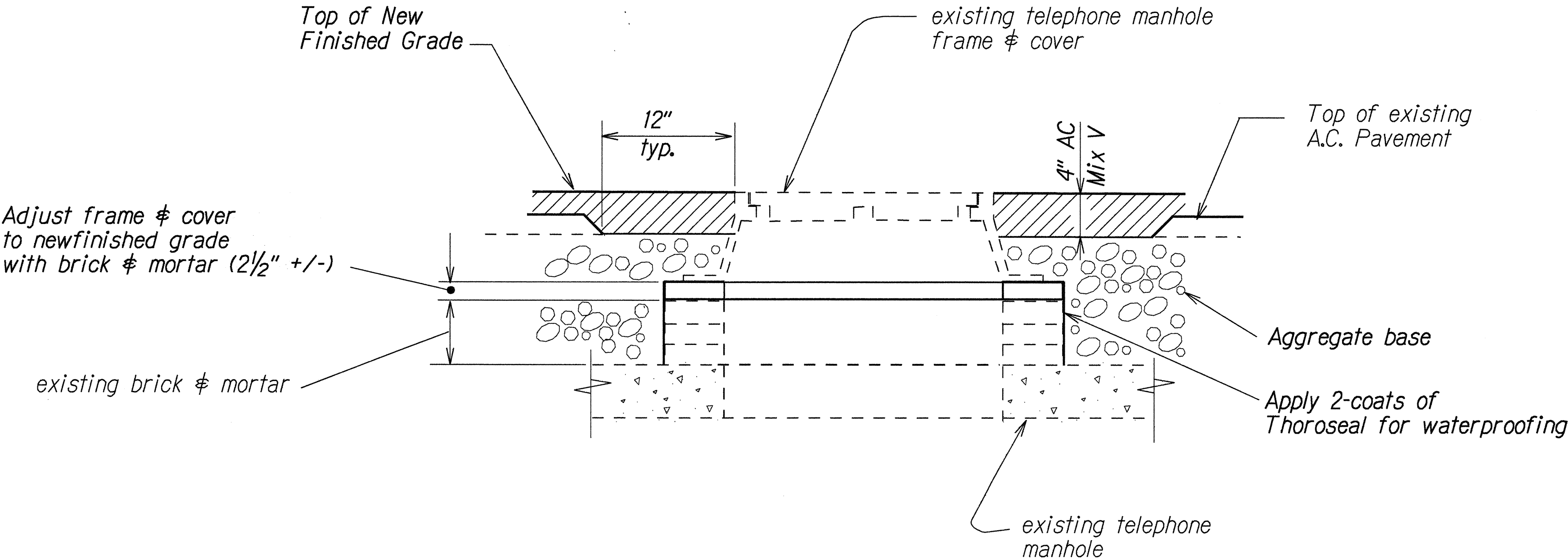


**TYPICAL MANHOLE FRAME &  
COVER ADJUSTMENT**  
(SEWER & STORM DRAIN M.H.)  
Not To Scale

STATE OF HAWAII DEPARTMENT OF TRANSPORTATION HIGHWAYS DIVISION
<b><u>TYPICAL DETAILS</u></b>
<b><u>KUHIO HIGHWAY RESURFACING</u></b>
<b><u>WAILUA TO KAPAA</u></b>
<b><u>Fed. Aid Proj. No. STP-056-1(37)</u></b>
Scale: As Shown Date: Apr., 1995
SHEET No. 4 OF 5 SHEETS

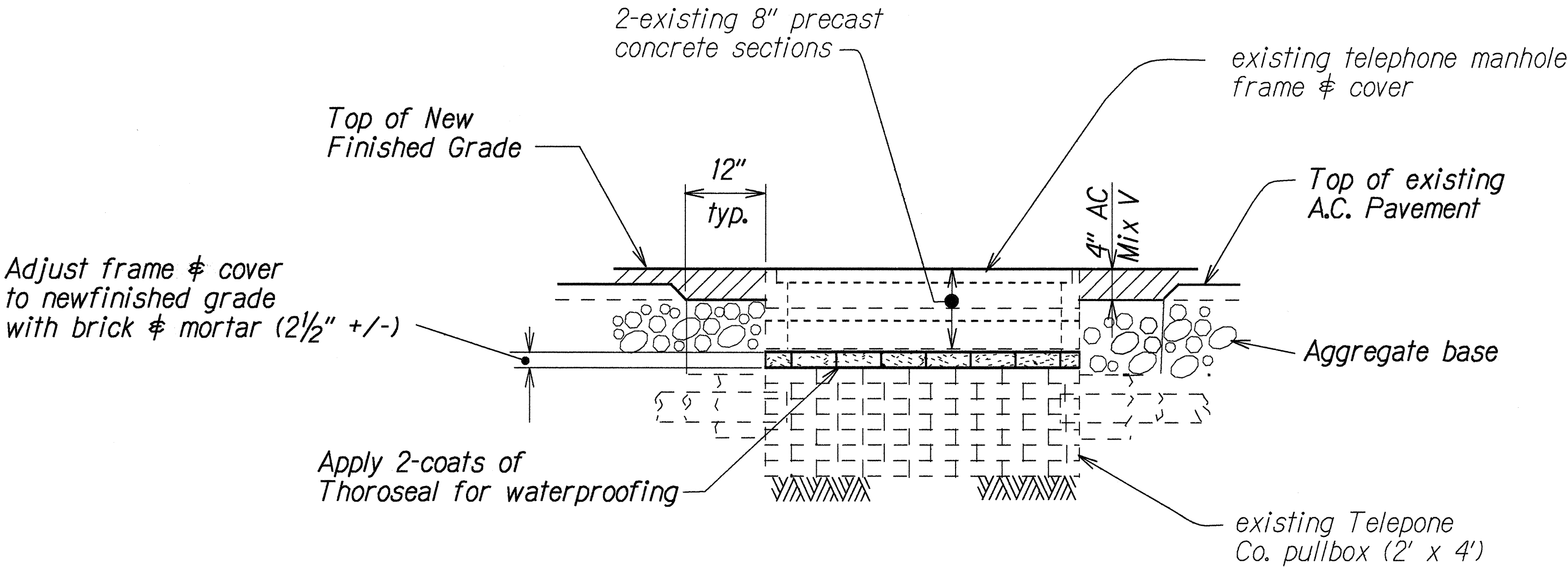


FED. ROAD DIST. NO.	STATE	FED. AID PROJ. NO.	FISCAL YEAR	SHEET NO.	TOTAL SHEETS
HAWAII	HAW.	STP-056-1(37)	1995	9	24



FRAME & COVER  
ADJUSTMENT FOR  
TELEPHONE CO. MANHOLES  
Not to Scale

- Notes:
- Contractor shall excavate around the top of the manhole and/or pullbox to the required depths to make the necessary frame & cover adjustments. Excavation shall not be paid for separately but shall be considered incidental to Item No. 604.4700 - Adjusting Telephone Manhole Frame & Cover , or Item No. 604.4701. -Adjusting Telephone Pullbox Frame & Cover.
  - Prior to resurfacing around the manhole and/or pullbox, the contractor shall place & compact aggregate base around the manhole or pullbox.



FRAME & COVER  
ADJUSTMENT FOR  
TELEPHONE CO. PULLBOX  
Not to Scale

SURVEY PLOTTED BY	DATE
DRAWN BY	
TRACED BY	
CHECKED BY	
QUANTITIES BY	
CHECKED BY	
ORIGINAL PLAN	
NOTE BOOK	
NO.	

STATE OF HAWAII  
DEPARTMENT OF TRANSPORTATION  
HIGHWAYS DIVISION

**TYPICAL DETAILS**  
KUHIO HIGHWAY RESURFACING  
WAILUA TO KAPAA  
Fed. Aid Proj. No. STP-056-1(37)

Scale: None
Date: Apr., 1995

SHEET No. 5 OF 5 SHEETS