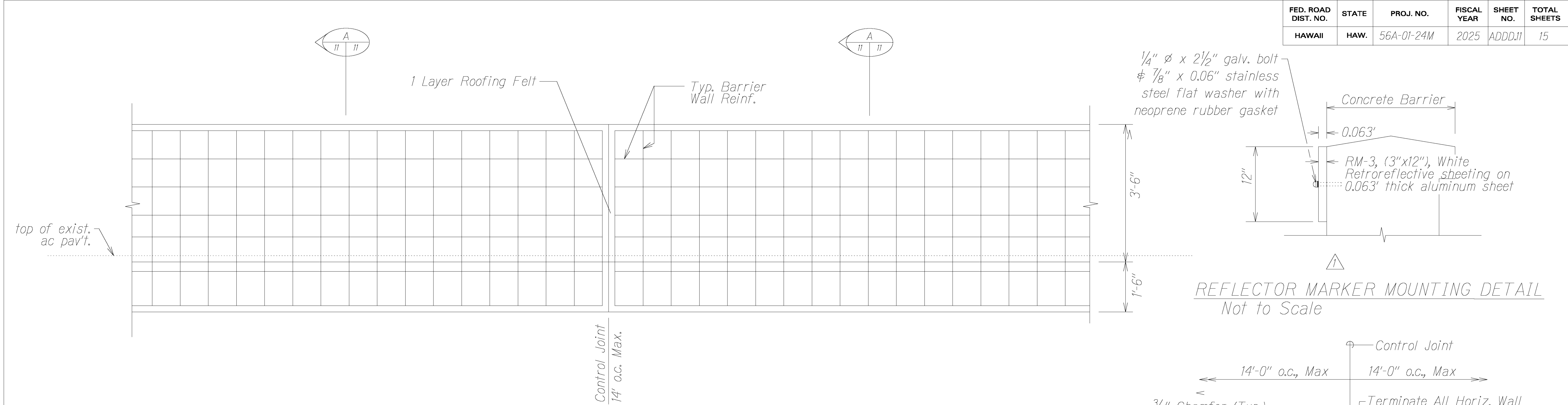
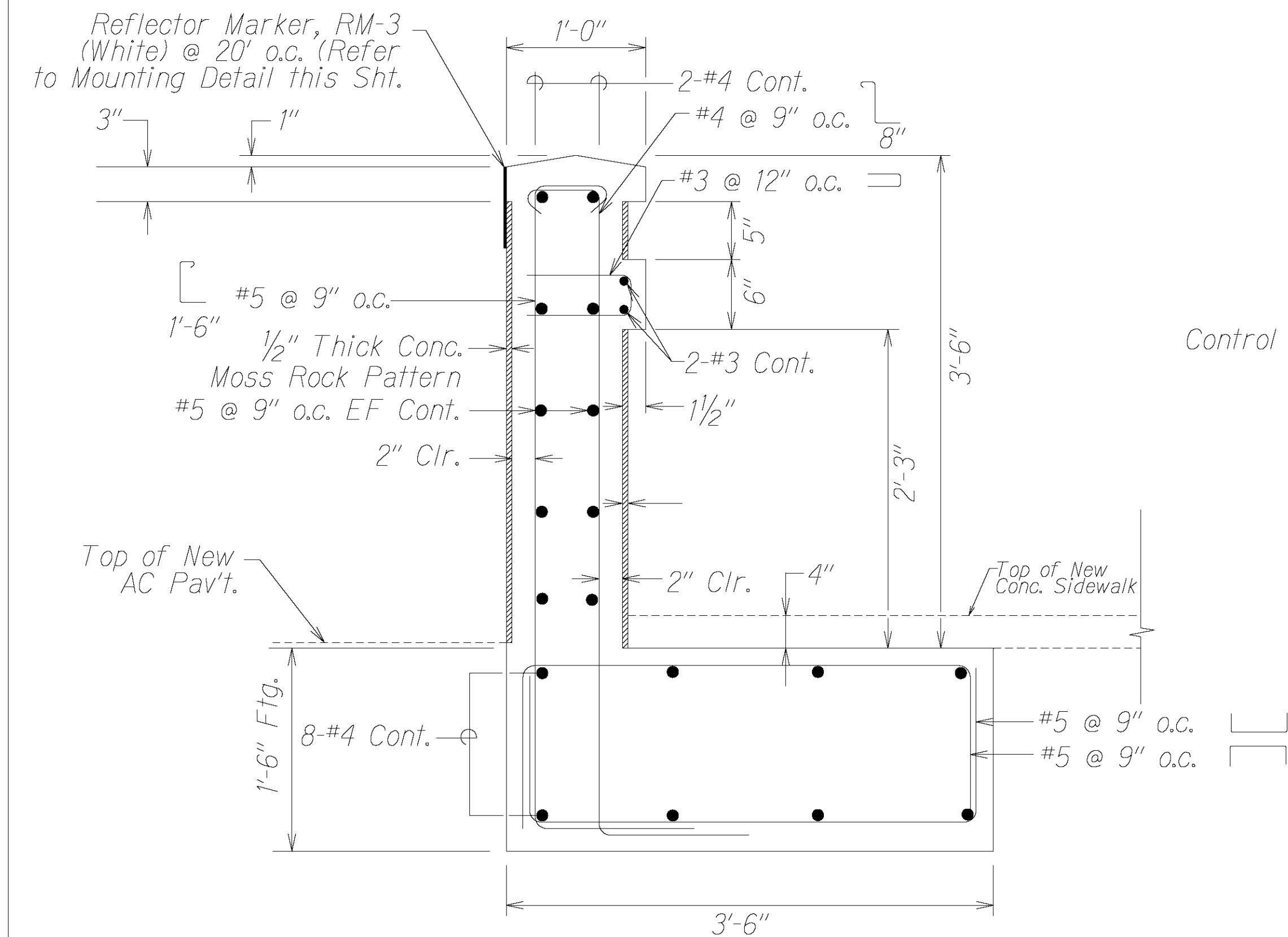


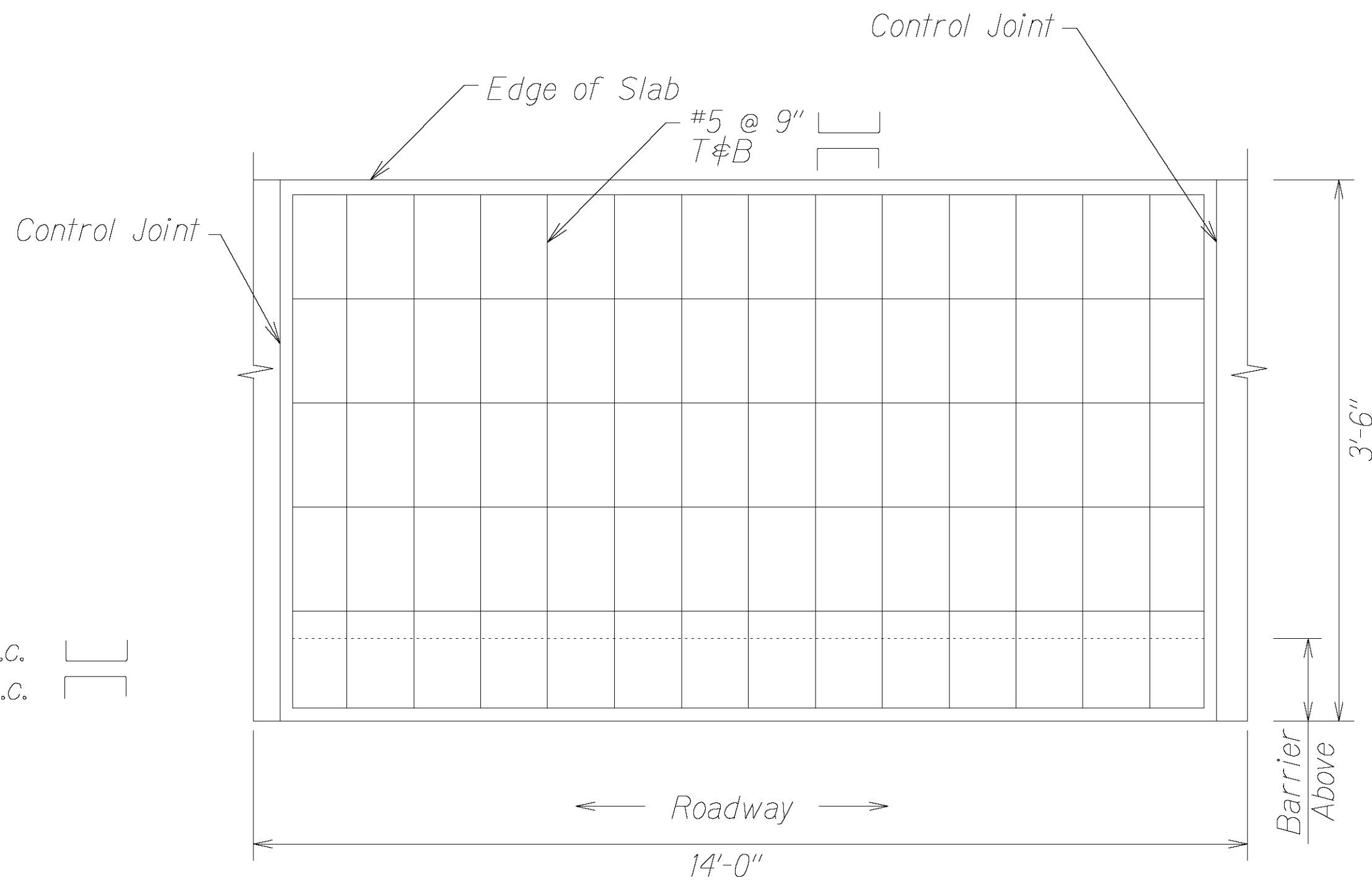
FED. ROAD DIST. NO.	STATE	PROJ. NO.	FISCAL YEAR	SHEET NO.	TOTAL SHEETS
HAWAII	HAW.	56A-01-24M	2025	ADDJ.11	15



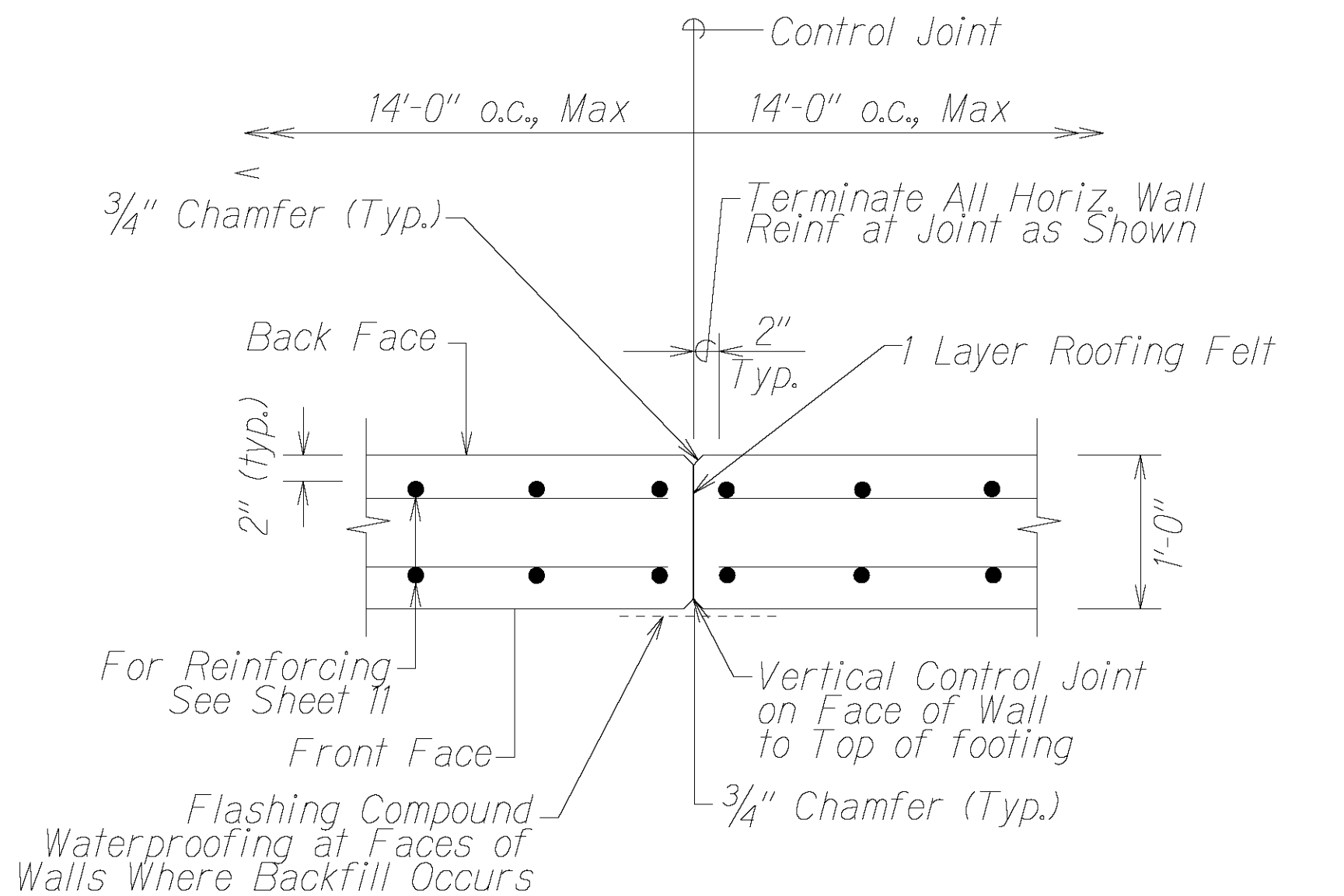
TYPICAL BARRIER WALL REINFORCEMENTS - ELEVATION
Not to Scale



SECTION
Not to Scale



TYPICAL SLAB LAYOUT
Not to Scale



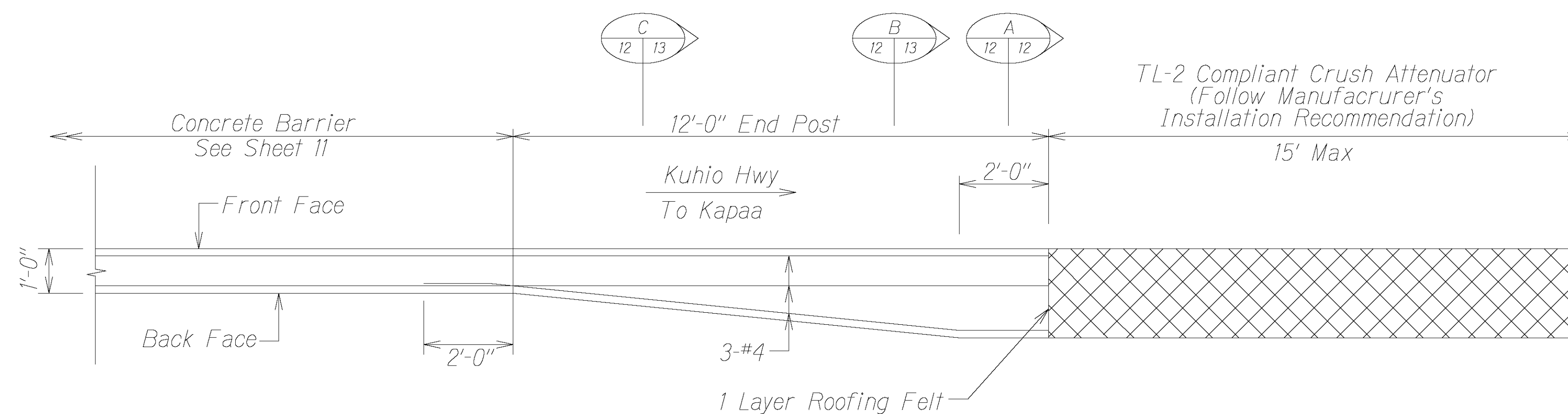
Note: Waterproofing shall be installed on exterior faces of wall at all joints.

CONTROL JOINT AT WALLS - PLAN
Not to Scale

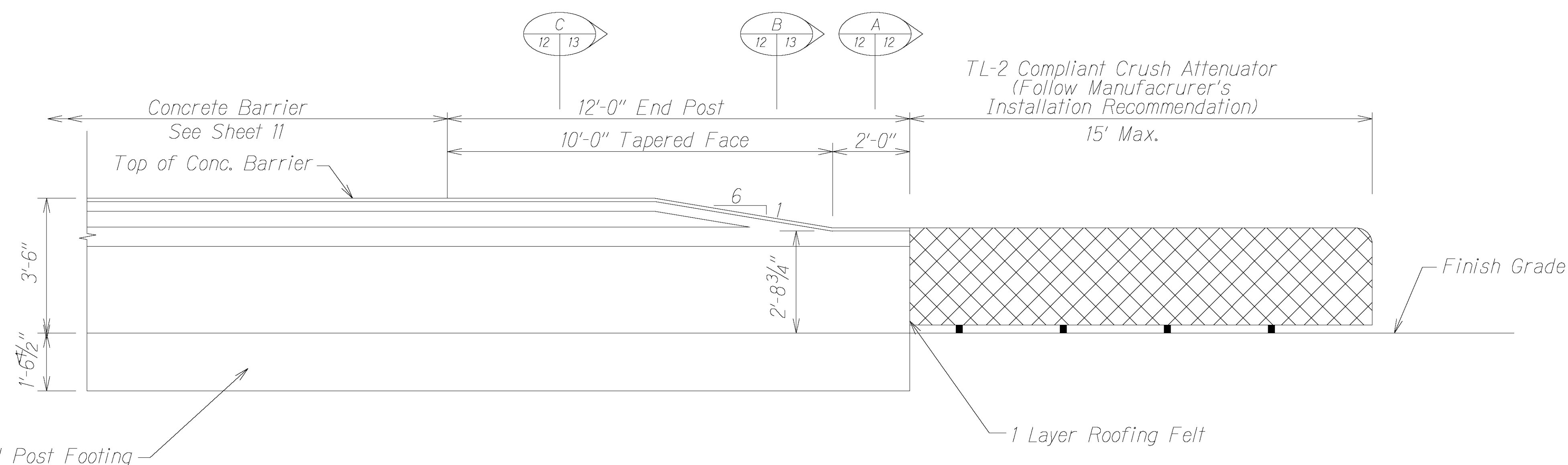
SURVEY PLOTTED BY	DATE
DRAWN BY	5/08
DESIGNED BY	
QUANTITIES BY	
CHECKED BY	

7/22/24	1 - RM-3 Mounting Detail
DATE	REVISION
STATE OF HAWAII DEPARTMENT OF TRANSPORTATION HIGHWAYS DIVISION	
MISCELLANEOUS DETAILS	
KUHIO HIGHWAY	
CONCRETE BARRIER INSTALLATION	
Vicinity of Lanikai Street	
Project No. 56A-01-24M	
Not to Scale	Date: May 2024
SHEET No. 1 OF 3 SHEETS	

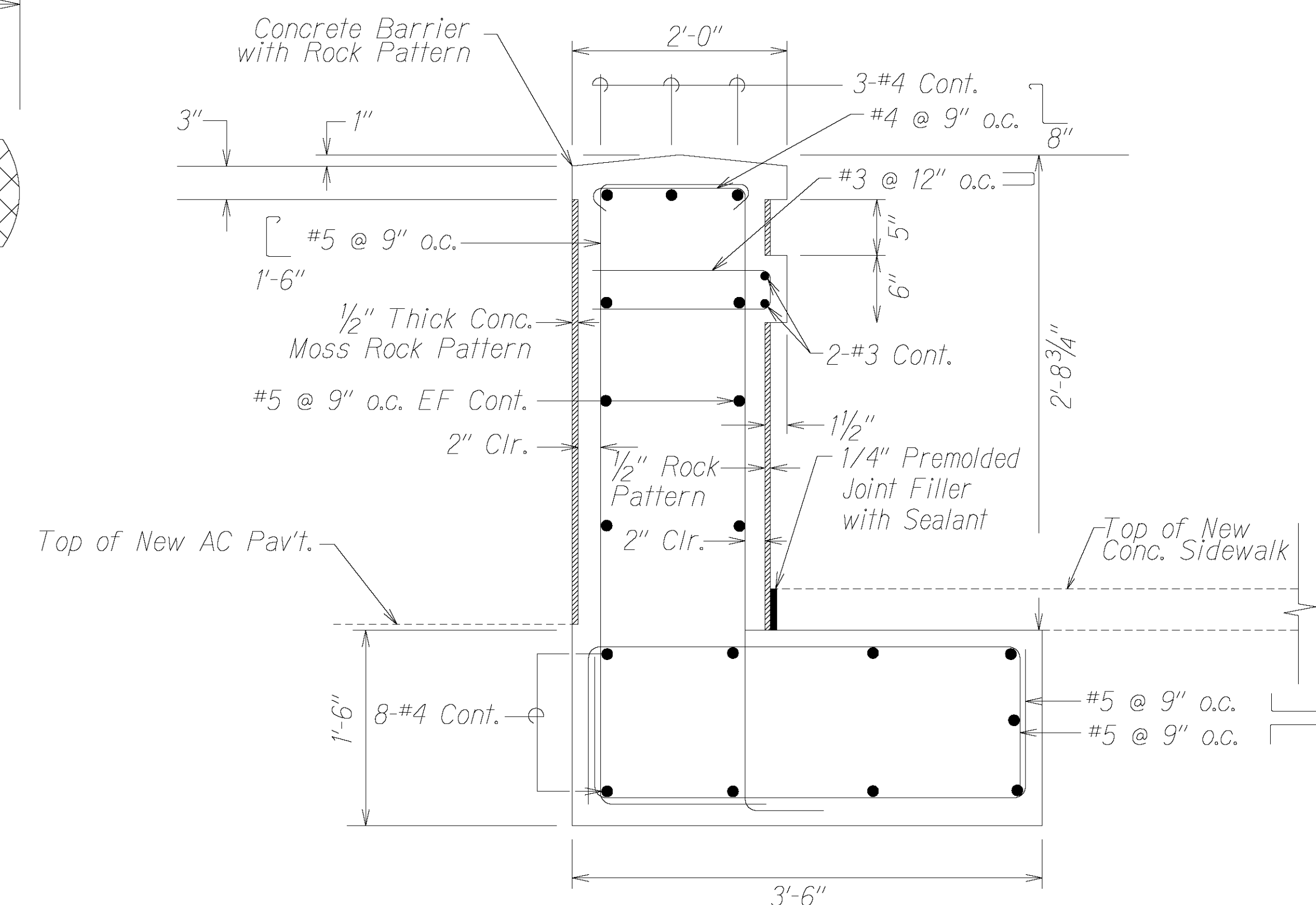
FED. ROAD DIST. NO.	STATE	PROJ. NO.	FISCAL YEAR	SHEET NO.	TOTAL SHEETS
HAWAII	HAW.	56A-01-24M	2025	ADD.12	15



END POST PLAN 
Not to Scale



END POST ELEVATION \triangle
Not to Scale



SECTION  A
Not to Scale

ORIGINAL PLAN	SURVEY PLOTTED BY	DATE
	DRAWN BY <i>X</i>	<i>5/09</i>
	TRACED BY	
	DESIGNED BY <i>X</i>	
	QUANTITIES BY	
	CHECKED BY	
	S _n	

7/22/24	<div style="display: flex; align-items: center;"> <div style="border: 1px solid black; padding: 2px; margin-right: 5px;">i</div> Revise End Post Plan & Elevation </div>
DATE	REVISION

STATE OF HAWAII
DEPARTMENT OF TRANSPORTATION
HIGHWAYS DIVISION

MISCELLANEOUS DETAILS

KUHIO HIGHWAY

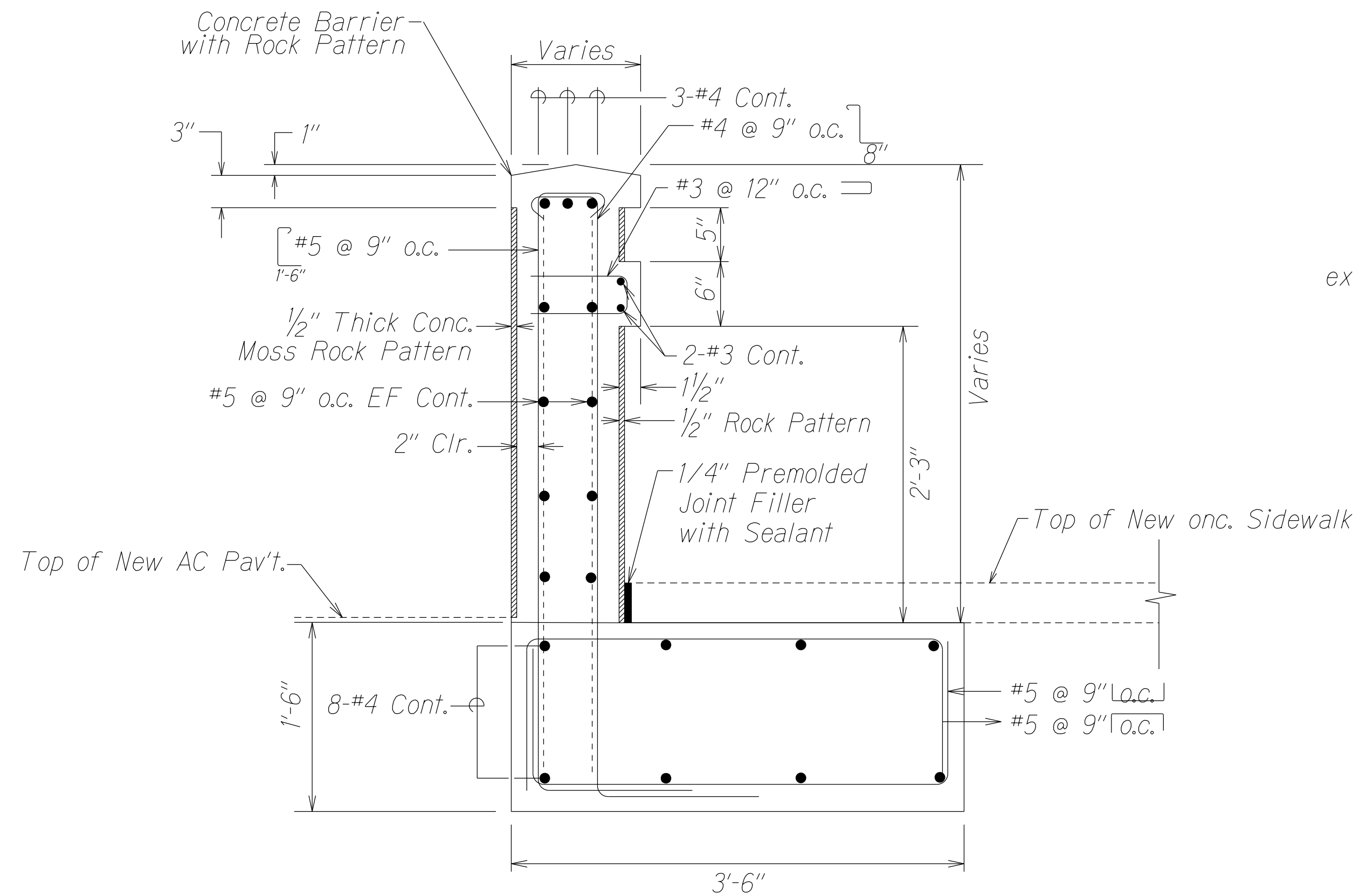
CONCRETE BARRIER INSTALLATION

Vicinity of Lanikai Street
Project No. 56A-01-24M

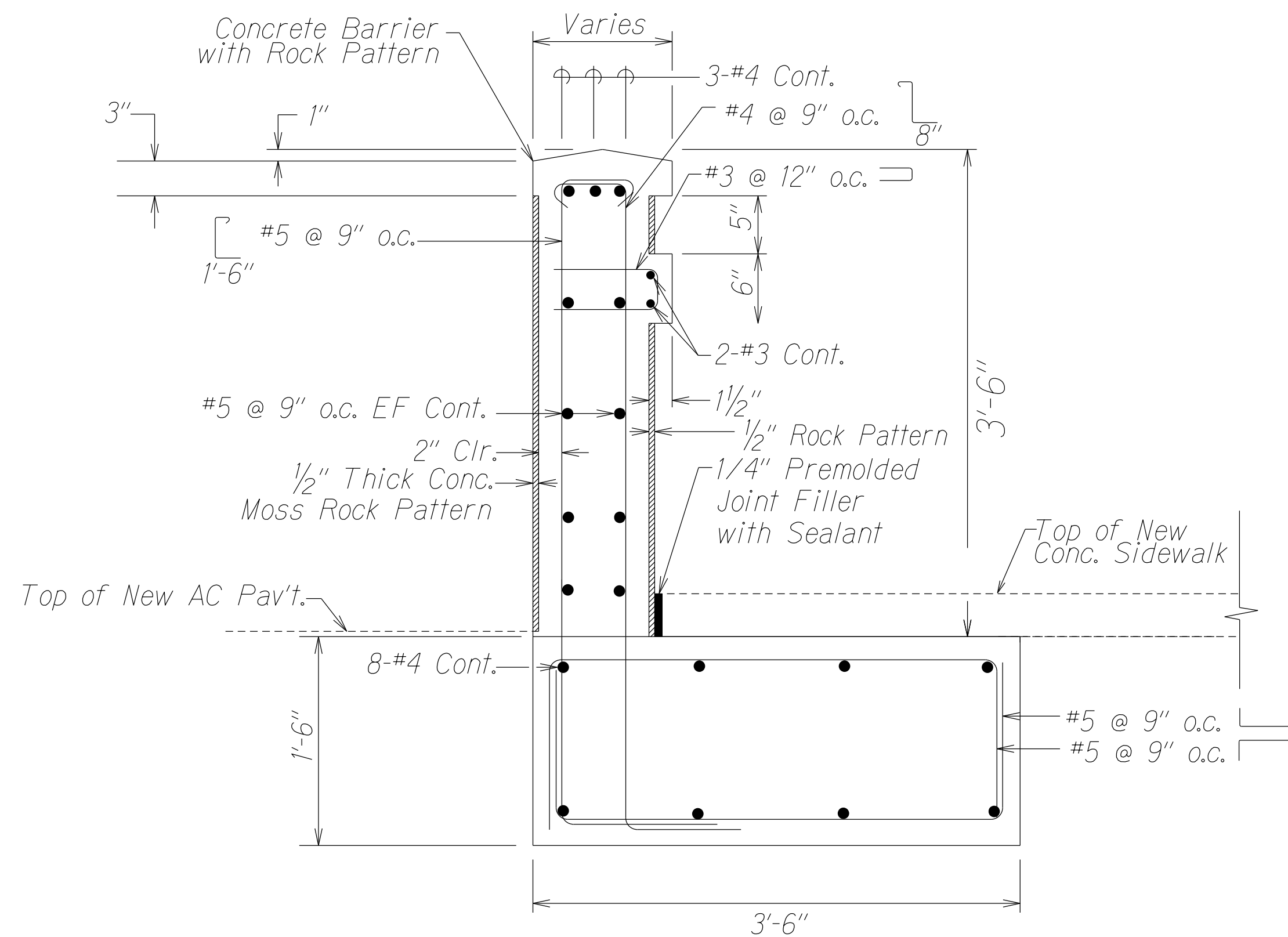
Not to Scale
Date: May 2024

SHEET No. 2 OF 3 SHEETS

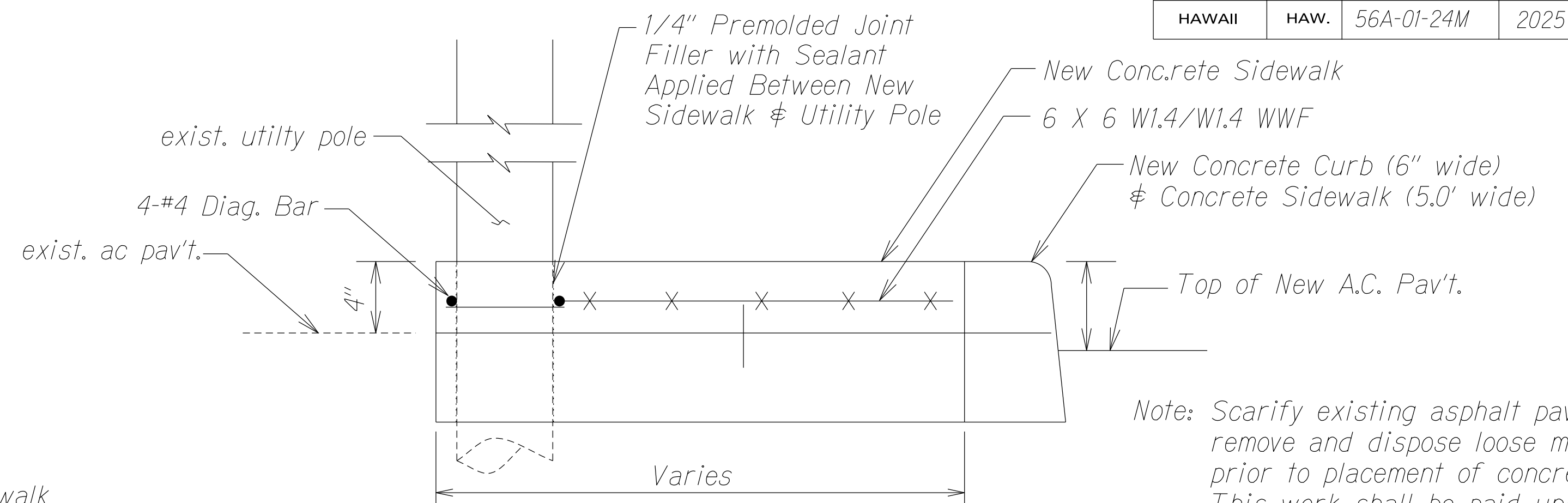
FED. ROAD DIST. NO.	STATE	PROJ. NO.	FISCAL YEAR	SHEET NO.	TOTAL SHEETS
HAWAII	HAW.	56A-01-24M	2025	13	15



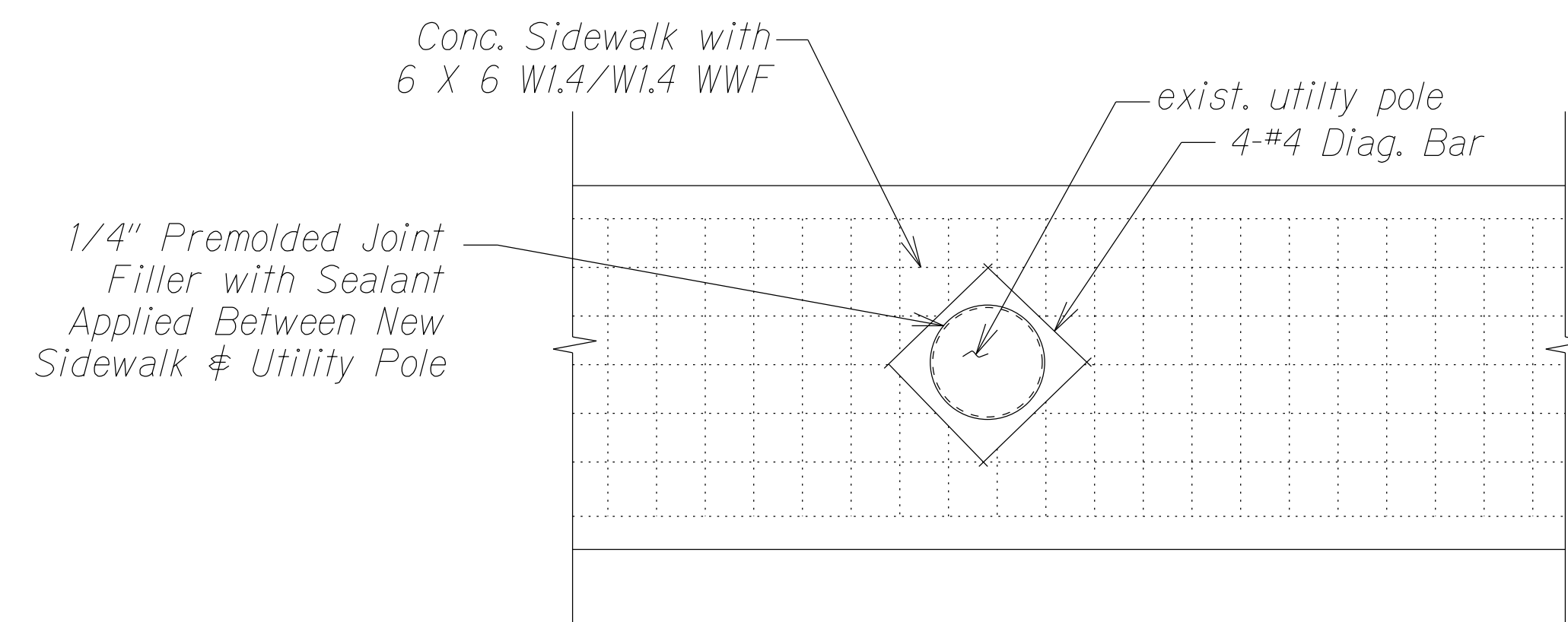
SECTION B
Not to Scale



SECTION C
Not to Scale

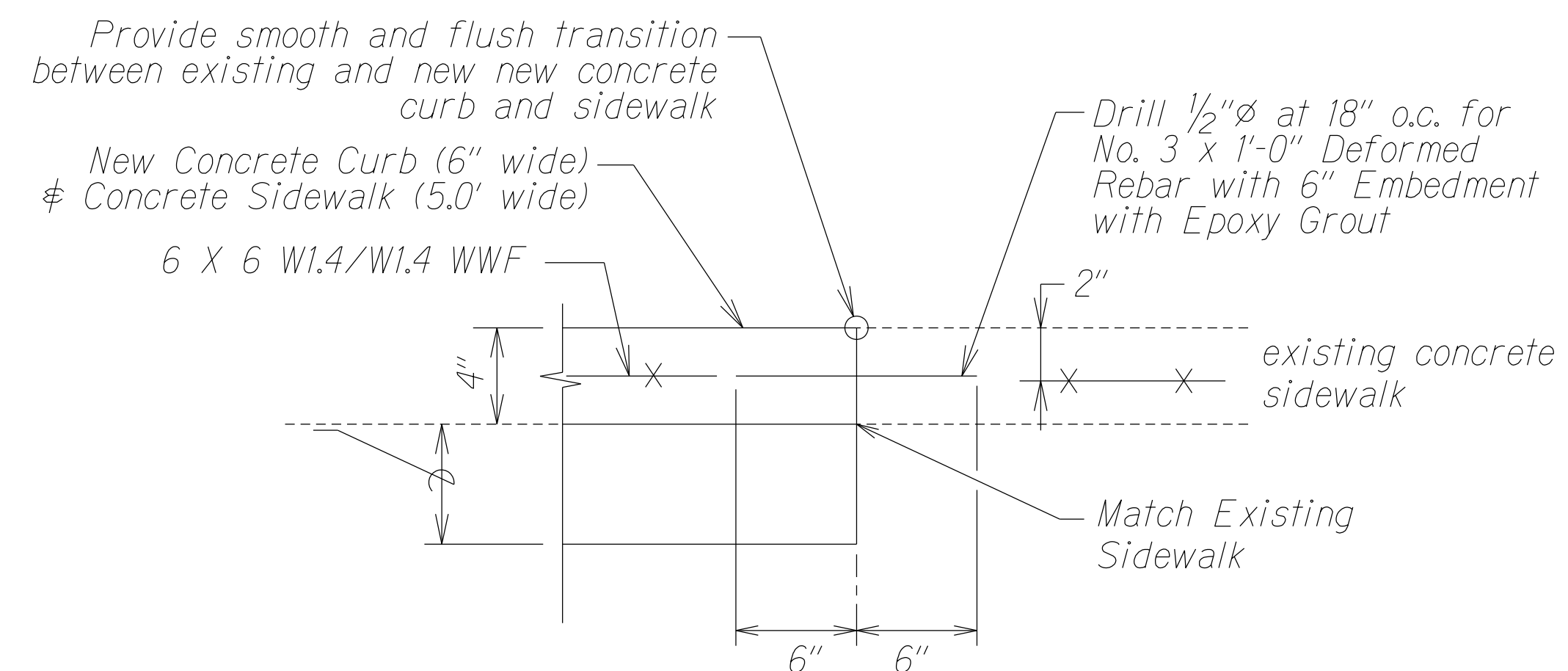


ELEVATION
Not to Scale



PLAN
Not to Scale

TYPICAL CONSTRUCTION AT EXISTING UTILITY POLE
Not to Scale



TYPICAL CONSTRUCTION JOINT
AT EXISTING RAMP
Not to Scale

STATE OF HAWAII DEPARTMENT OF TRANSPORTATION HIGHWAYS DIVISION	
MISCELLANEOUS DETAIL	
KUHIO HIGHWAY	
CONCRETE BARRIER INSTALLATION	
Vicinity of Lanikai Street	
Project No. 56A-01-24M	
Not to Scale	Date: May 2024
SHEET No. 3 OF 3 SHEETS	