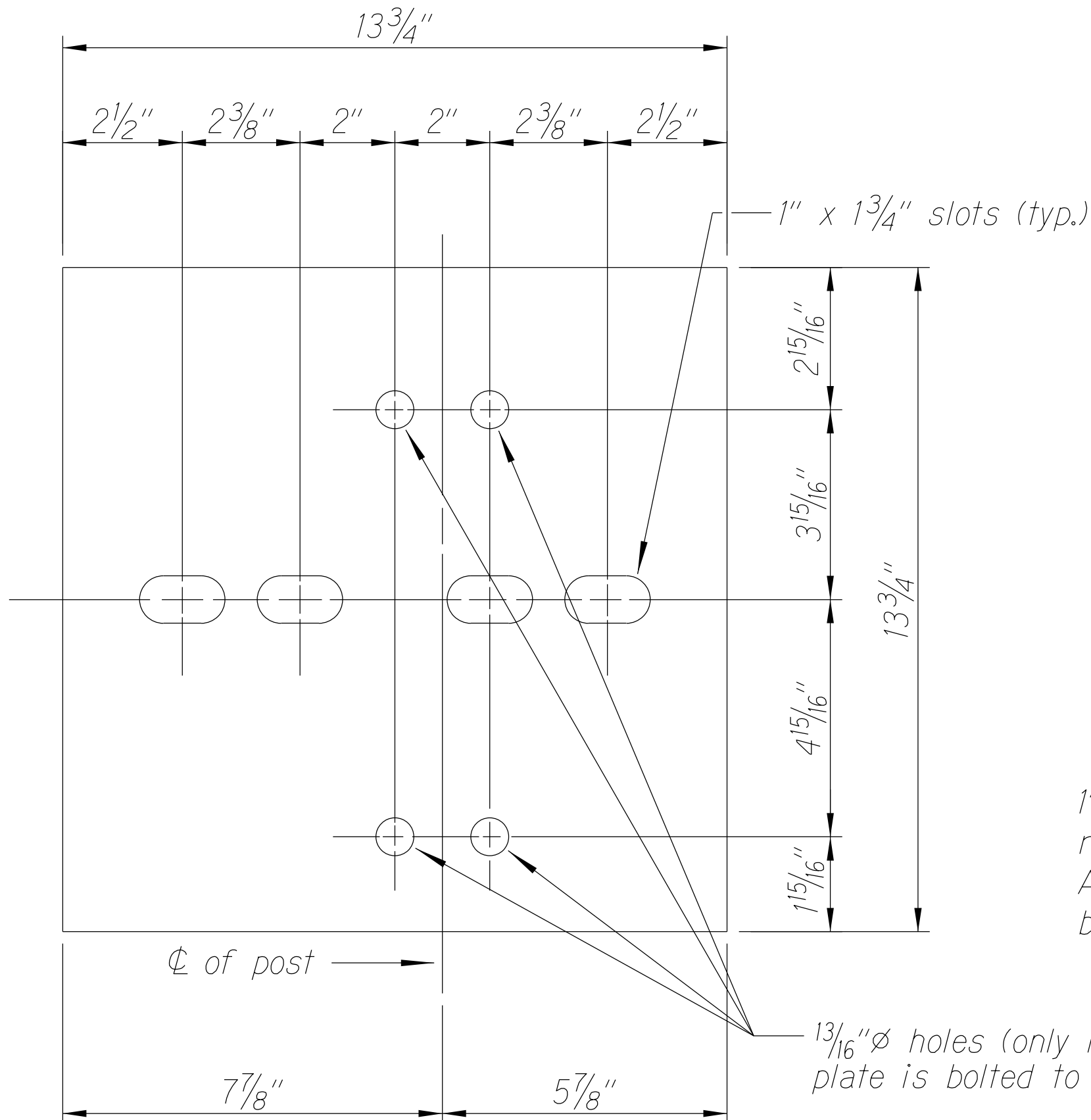
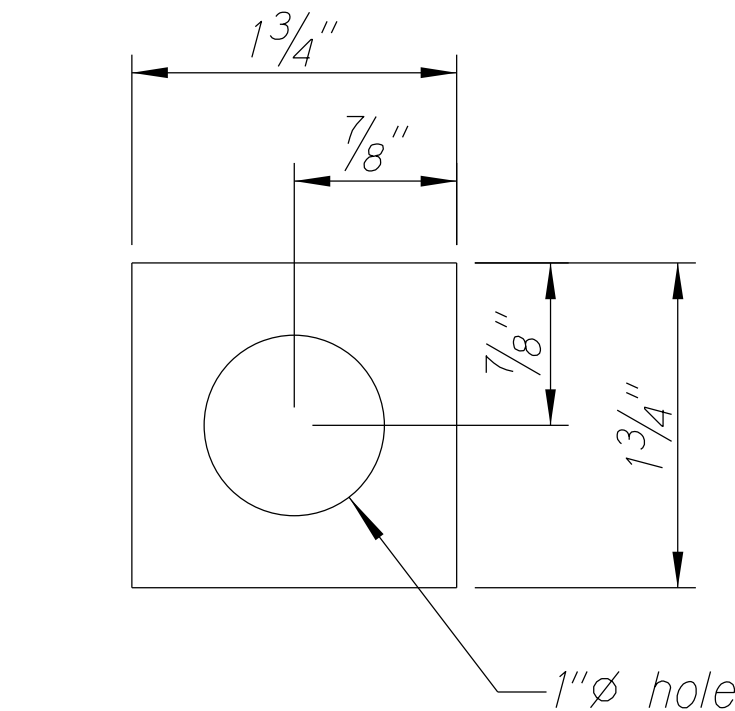


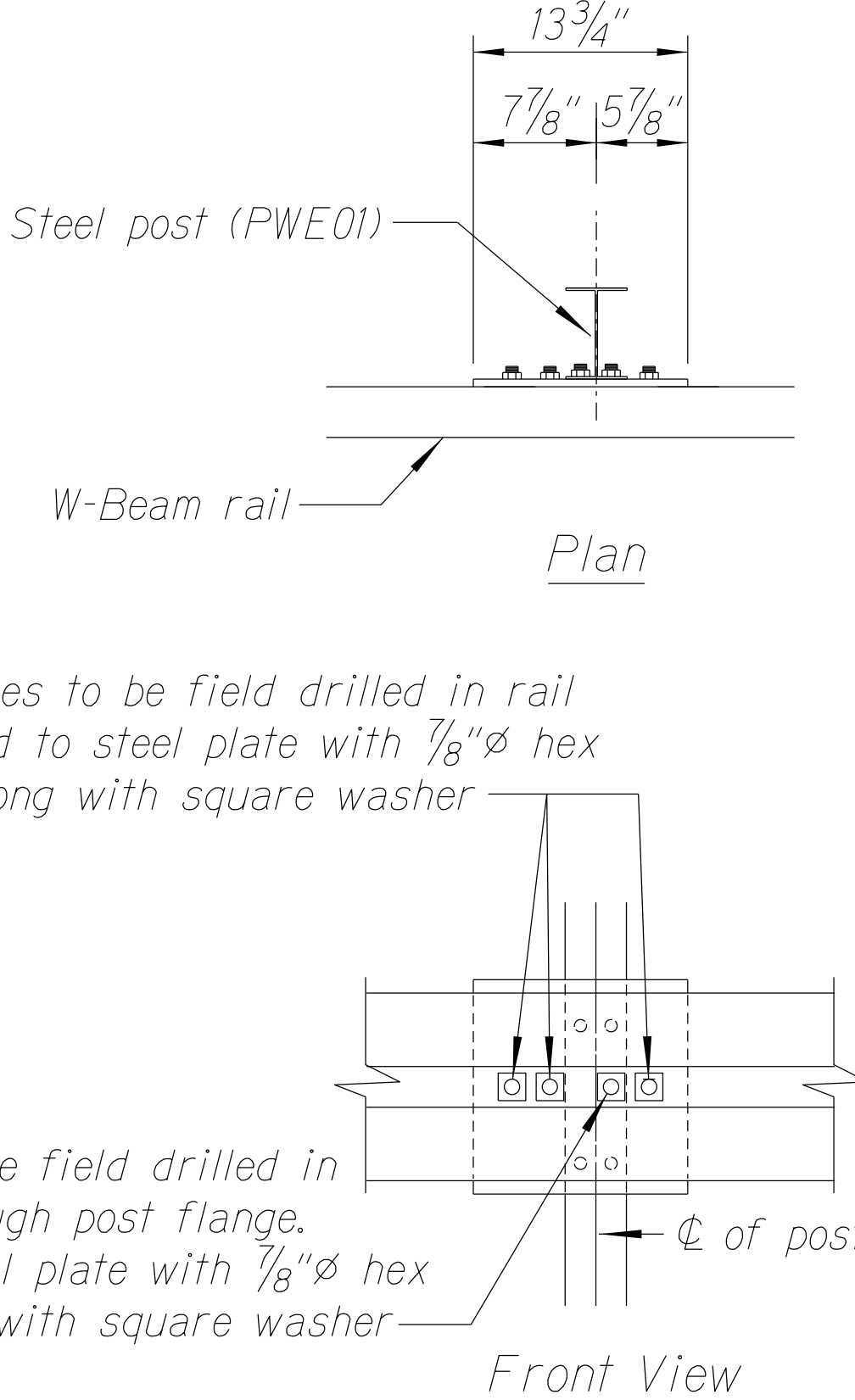
FED. ROAD DIST. NO.	STATE	FED. AID PROJ. NO.	FISCAL YEAR	SHEET NO.	TOTAL SHEET
HAWAI'I	HAW.	STP-0700(090)	2023	20	26



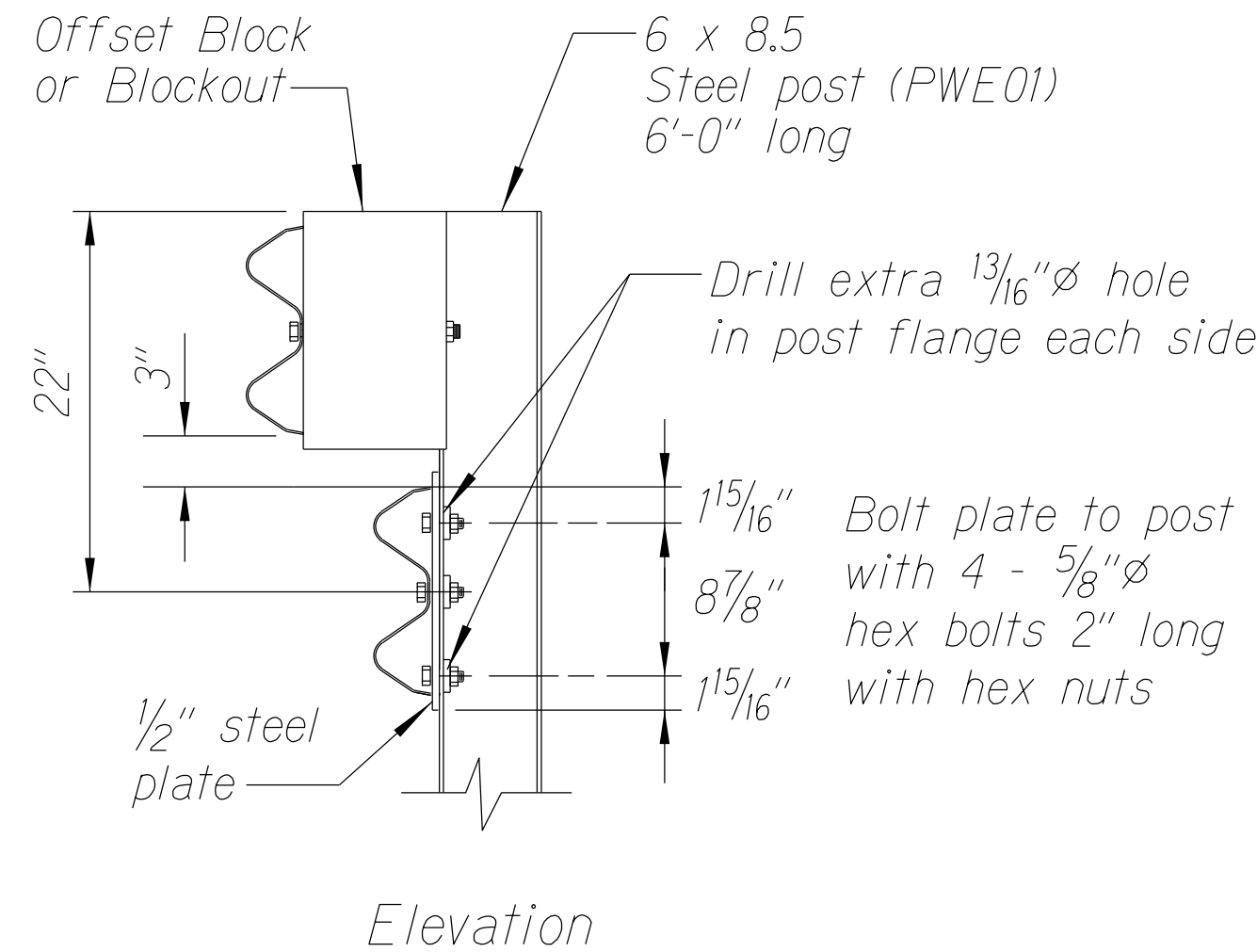
Steel Plate - 1/2"
(Hot-dip Zinc Coated Galvanized-
Welded or Bolted to Post)



Square Washer
($\frac{3}{16}$ " Thick - Hot-dip
Zinc Coated Galvanized)

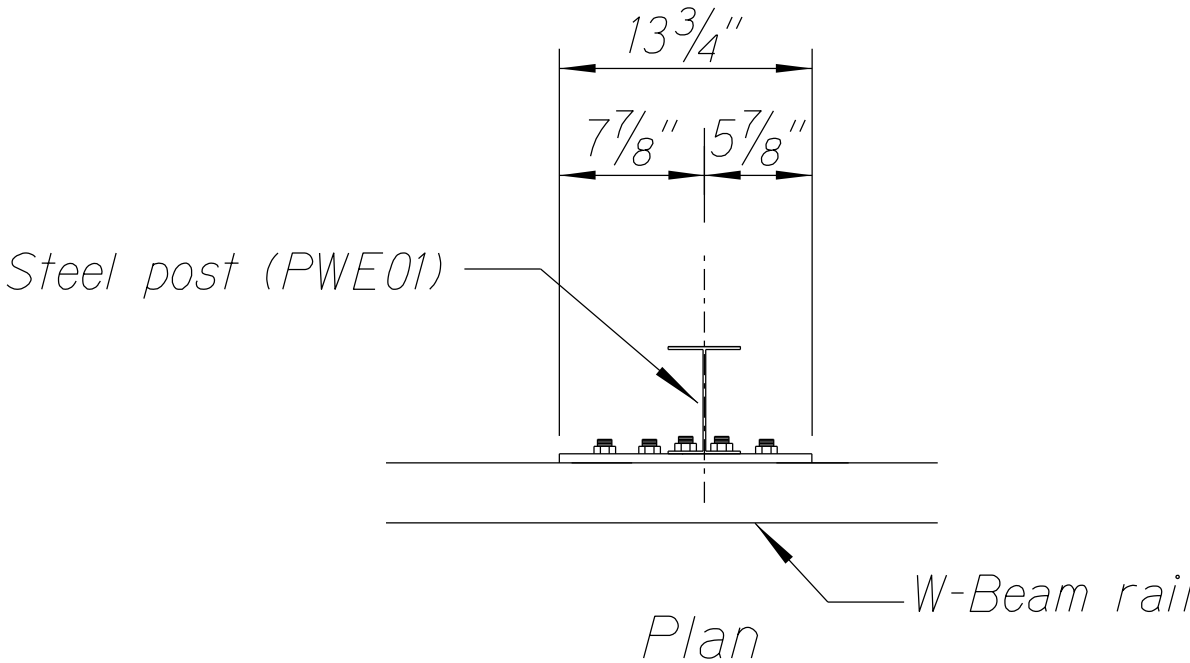


RUBRAIL ANCHOR DETAILS

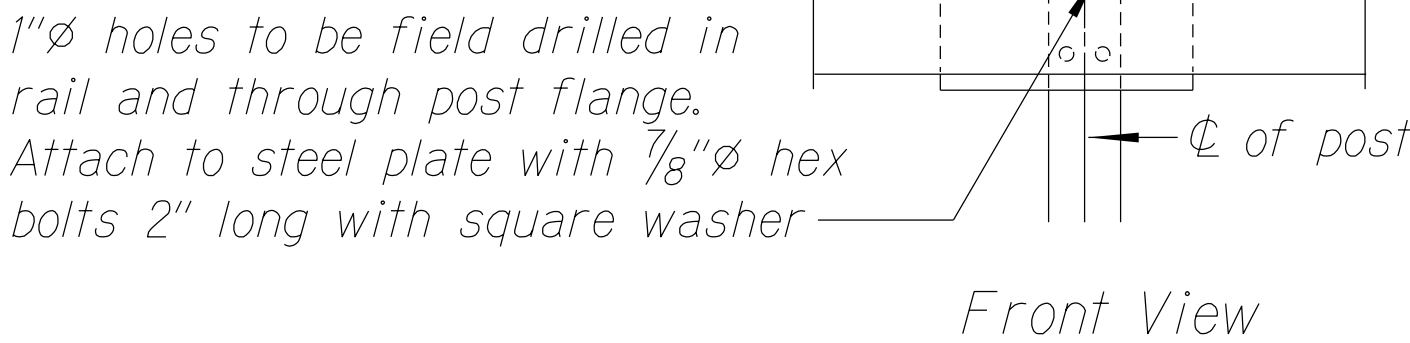


Note:

All fasteners, posts, blocks and rail elements shall conform to the latest edition and amendments of "A Guide to Standardized Highway Barrier Rail Hardware", a report prepared and approved by the AASHTO-AGCARTBA Joint Cooperative Committee.

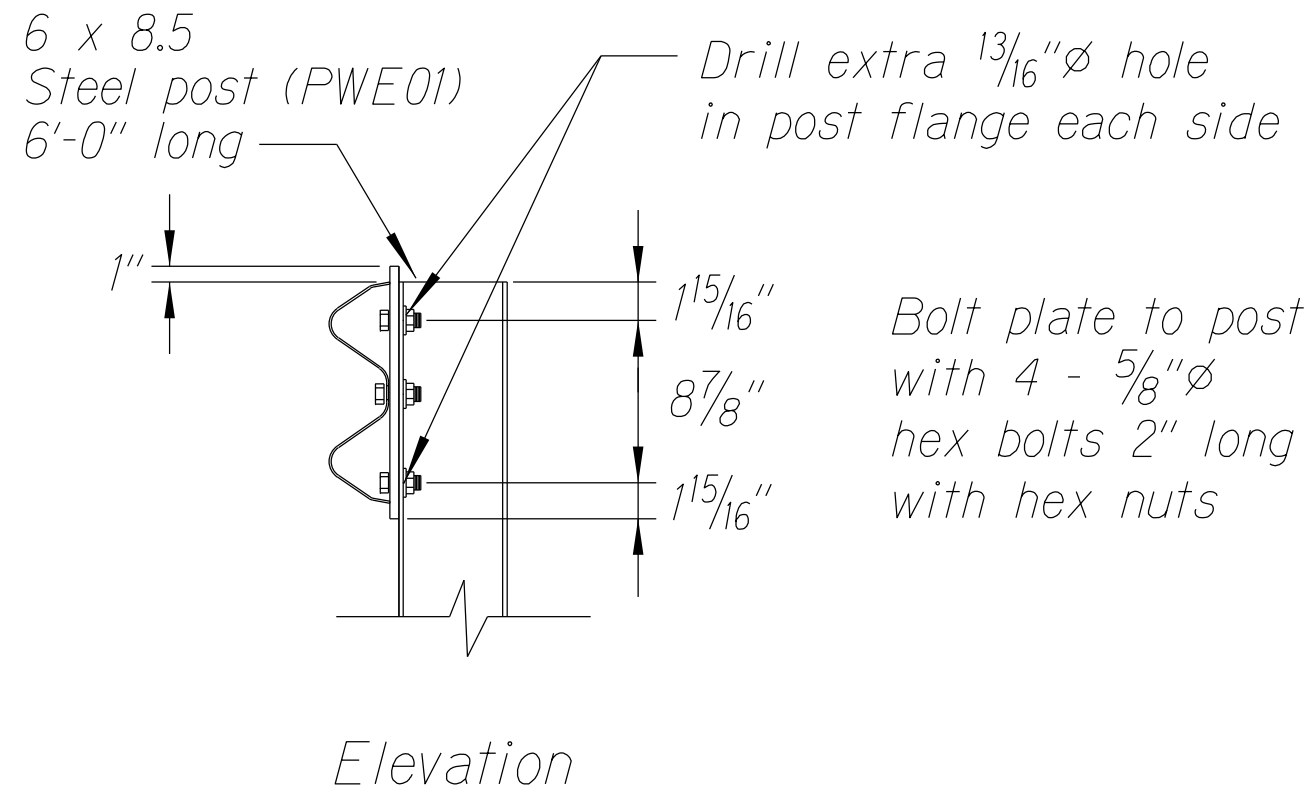


3 - $\frac{7}{8}$ " \varnothing holes to be field drilled in rail
and attached to steel plate with $\frac{7}{8}$ " \varnothing hex
bolts $1\frac{15}{16}$ " long with square washer —



POST ANCHOR DETAILS

RUBRAIL DETAIL FOR MODIFIED TYPE "A-1" FLARE
(WHEN CALLED FOR IN PLANS)



4'-0" Min. Embedment

Elevation

STEEL POST GUARDRAIL
WITH RUBRAIL

MODIFIED TYPE "A-1" FLARE

ORIGINAL PLAN	SURVEY PLOTTED BY _____	DATE _____
	DRAWN BY <u>X</u>	• <u>X</u>
	TRACED BY _____	• _____
	DESIGNED BY <u>X</u>	• _____
	QUANTITIES BY _____	• _____
	CHECKED BY _____	• _____

STATE OF HAWAII
DEPARTMENT OF TRANSPORTATION
HIGHWAYS DIVISION

MODIFIED TYPE "A-1" FLARE
RUBRAIL DETAILS
KUHIO HIGHWAY GUARDRAIL AND SHOULDER
IMPROVEMENTS AT VARIOUS LOCATIONS, PART 7
Federal-Aid Project No. STP-0700(090)

Scale: NTS Date: July 2023