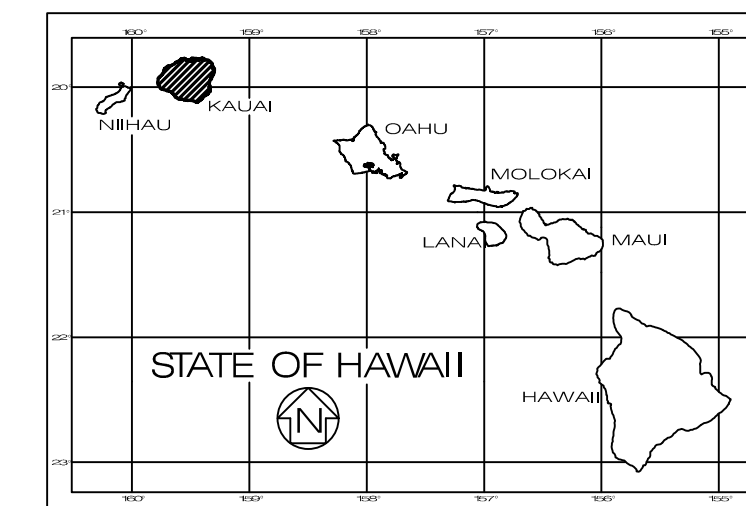


FED. ROAD DIST. NO.	STATE	FEDERAL AID PROJ. NO.	FISCAL YEAR	SHEET NO.	TOTAL SHEETS
HAWAII	HAW.	ER-23(001)	2021	1	109



STATE OF HAWAII
DEPARTMENT OF TRANSPORTATION
HIGHWAYS DIVISION
HONOLULU, HAWAII

PLANS FOR
KUHIO HIGHWAY
REPAIRS TO WAILUA RIVER BRIDGE
FEDERAL AID PROJECT NO. ER-23(001)

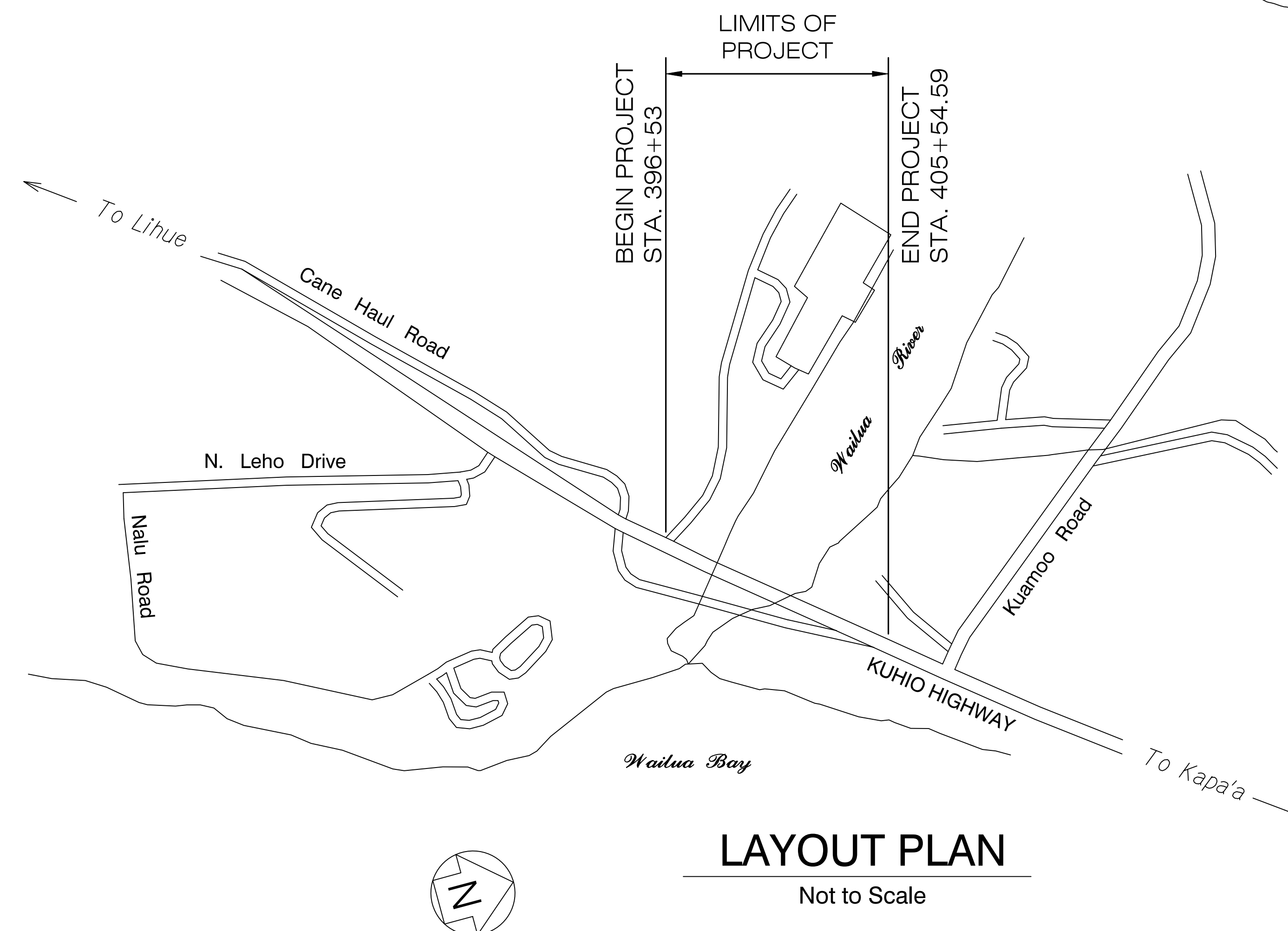
DISTRICT OF LIHUE
ISLAND OF KAUAI

FEDERAL AID PROJECTS PREVIOUSLY CONSTRUCTED
OR UNDER CONSTRUCTION

MILE POST 5.70 TO MILE POST 5.87

INDEX TO DRAWINGS	
SHEET NO.	DESCRIPTION
1	TITLE SHEET
2	STANDARD PLANS SUMMARY
3	GENERAL NOTES & LEGEND
4-6	GENERAL NOTES
7-8	WATER NOTES
9	SEWER NOTES
10-11	UTILITY NOTES
12-14	WATER POLLUTION AND EROSION CONTROL NOTES
15	WATER POLLUTION AND EROSION CONTROL DETAILS
16	EROSION CONTROL PLAN
17	ALIGNMENT PLAN
18	ROADWAY PLAN
19	GUARDRAIL DETAILS & NOTES
20	STRONG POST W-BEAM GUARDRAIL
21	SIGNING AND PAVEMENT MARKING NOTES AND LEGEND
22-23	SIGNING AND PAVEMENT MARKING PLAN AND DETAIL
24-38	SCOUR PROTECTION PLANS
39-102	STRUCTURAL PLANS
103-109	TRAFFIC CONTROL PLANS


SECTION	Kuhio Highway at Wailua River Bridge, MP 5.84; Kapule Highway to Kuamoo Road Route 56 (MP 2.61 to 5.96)
TRAFFIC DATA	
2020 ADT	37,900
2030 ADT	46,300
2040 ADT	54,800
2030 DHV	3,700
2050 DHV	4,380
Design K	8.0
Design D	60/40
Design T	3.5
T24	3.5
CLASSIFICATION	24-HOUR TRUCK COMPOSITION PERCENT
BUS	8.60
2D	52.19
3X	14.17
4X	4.14
2S1, 3S1, 2S2	8.61
3S2, 3-2, 2-3	6.85
6/6+X S-TLR	1.36
5X M-TLR	1.21
6X M-TLR	0.62
7X M-TLR	2.26



LAYOUT PLAN

Not to Scale

GROSS LENGTH OF PROJECT. 0.40 MILES
NET LENGTH OF PROJECT. 0.17 MILES

DEPARTMENT OF TRANSPORTATION STATE OF HAWAII	
APPROVED: 	May 4, 2021
_____ DIR. OF TRANSPORTATION	_____ DATE