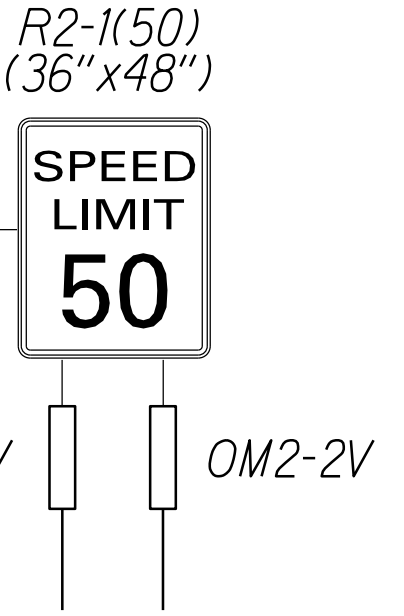
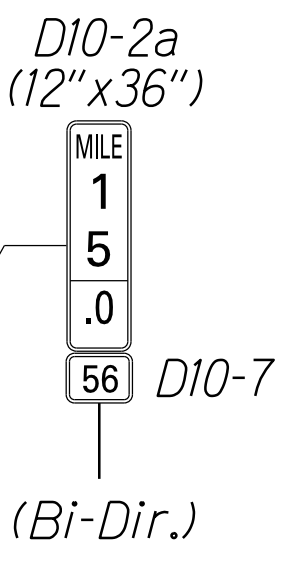
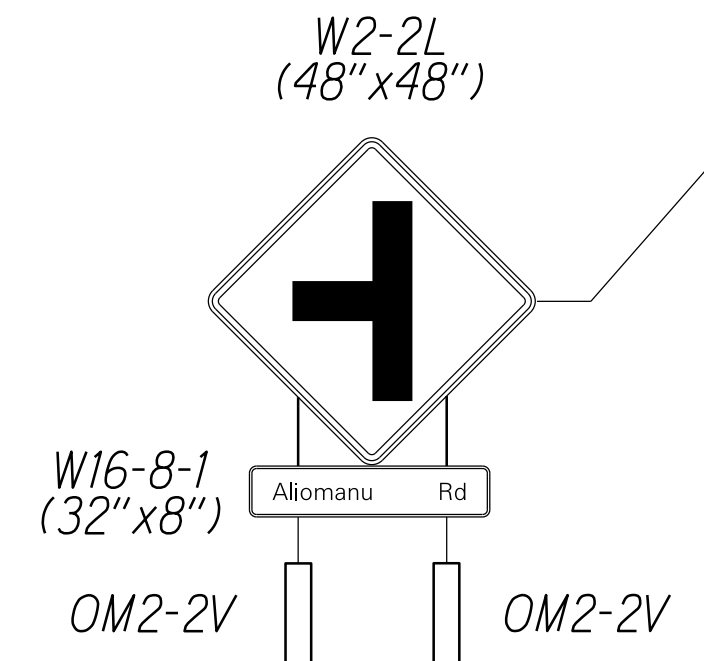
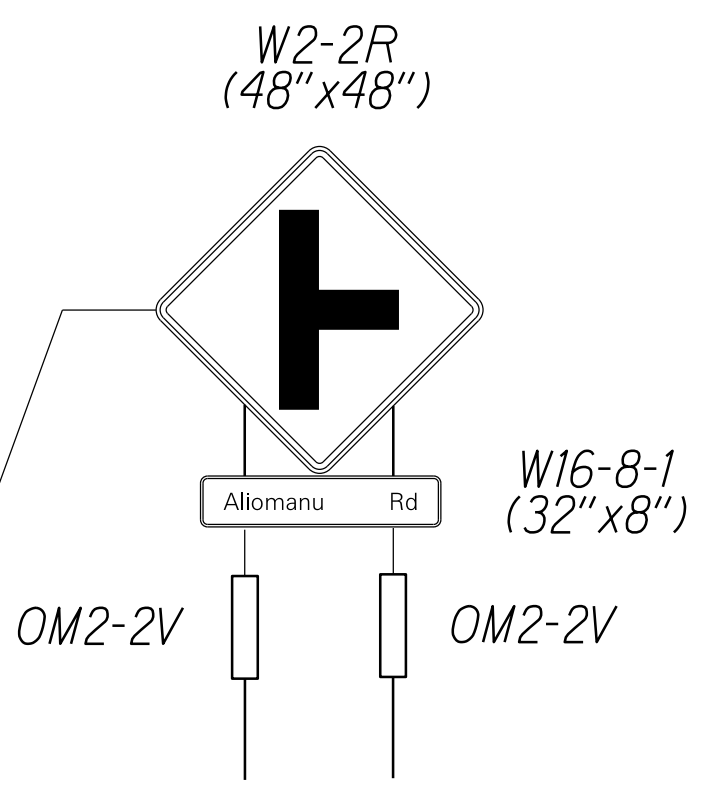
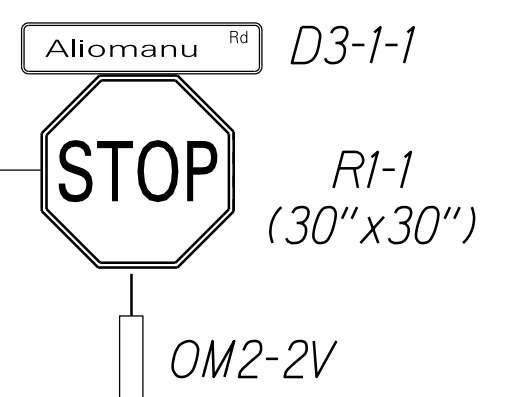
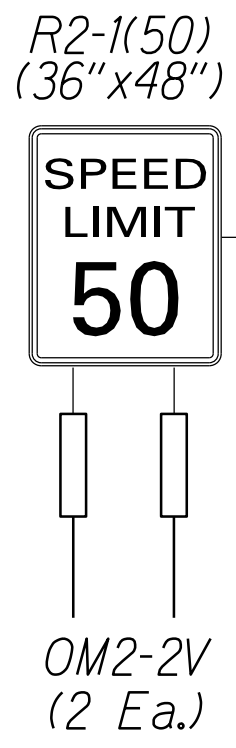
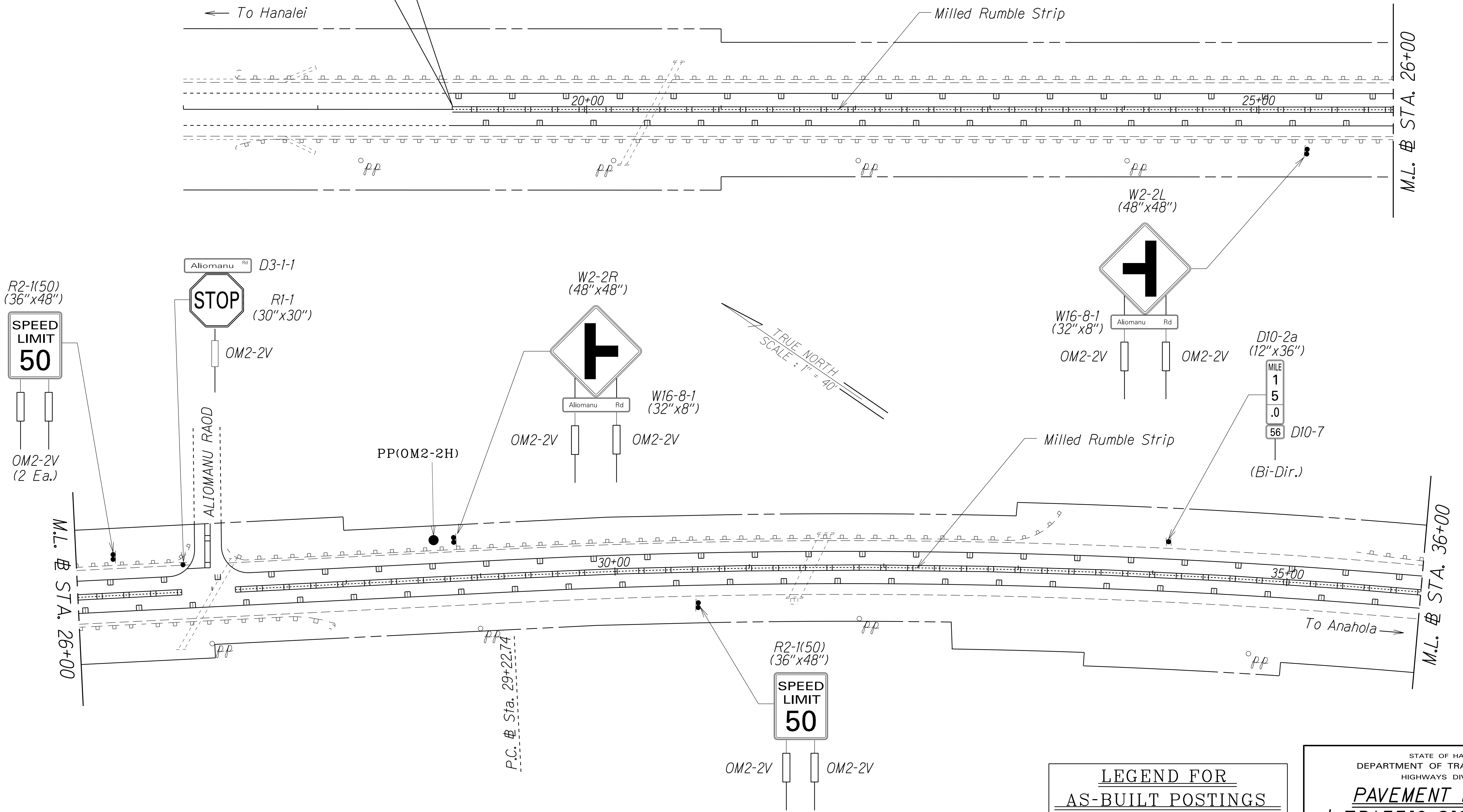
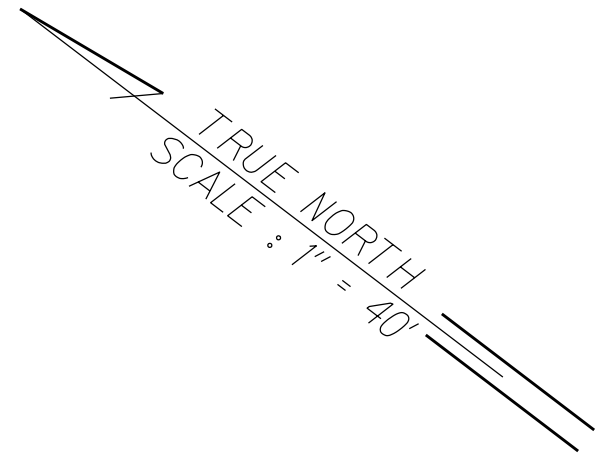


FED. ROAD DIST. NO.	STATE	PROJ. NO.	FISCAL YEAR	SHEET NO.	TOTAL SHEETS
HAWAII	HAW.	56C-01-15M	2017	16	21

END PROJECT
Project No. 50C-01-15M
Sta. 19+00



LEGEND FOR AS-BUILT POSTINGS	
	Squiggly line for as-built deletion
	Double line for as-built deletion
Roadway	Text for as-built posting

STATE OF HAWAII
DEPARTMENT OF TRANSPORTATION
HIGHWAYS DIVISION

PAVEMENT MARKING
TRAFFIC SIGNING PLAN

KUHIO HIGHWAY RESURFACING
Papaa Road to Aliomanu Road (South)
Project No. 56C-01-15M

Scale: 1" = 40' Date: August 2016
SHEET No. T3 OF 6 SHEETS

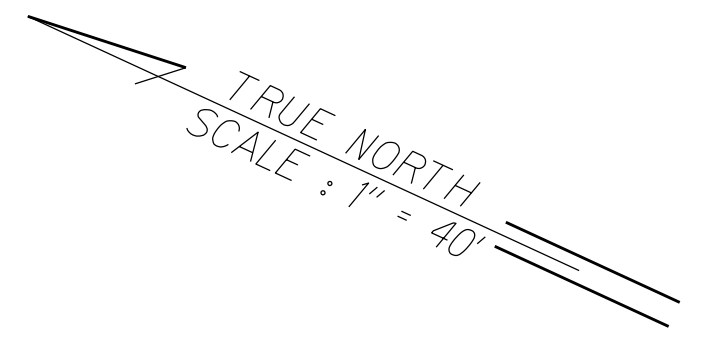
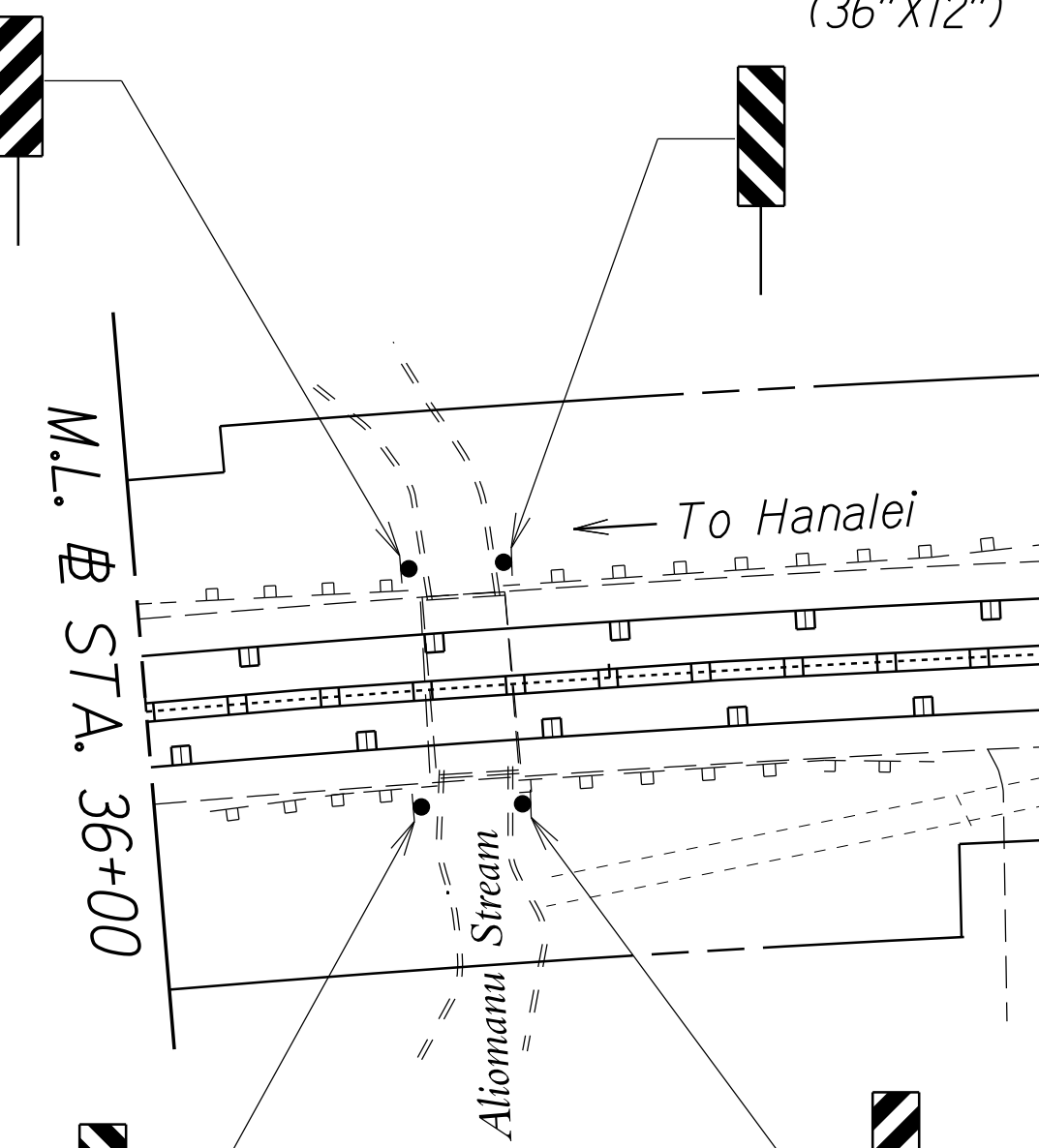
ORIGINAL PLAN	SURVEY PLOTTED BY	DATE
NOTE BOOK	DRAWN BY	
DESIGNED BY	TRACED BY	
CHECKED BY	DESIGNED BY	
	CHECKED BY	

"AS-BUILT"

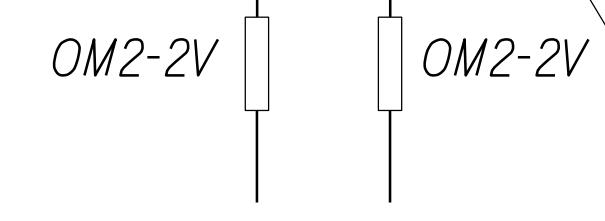
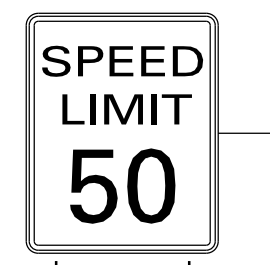
FED. ROAD DIST. NO.	STATE	PROJ. NO.	FISCAL YEAR	SHEET NO.	TOTAL SHEETS
HAWAII	HAW.	56C-01-15M	2017	17	21

OM3-1(L)
(36"x12")

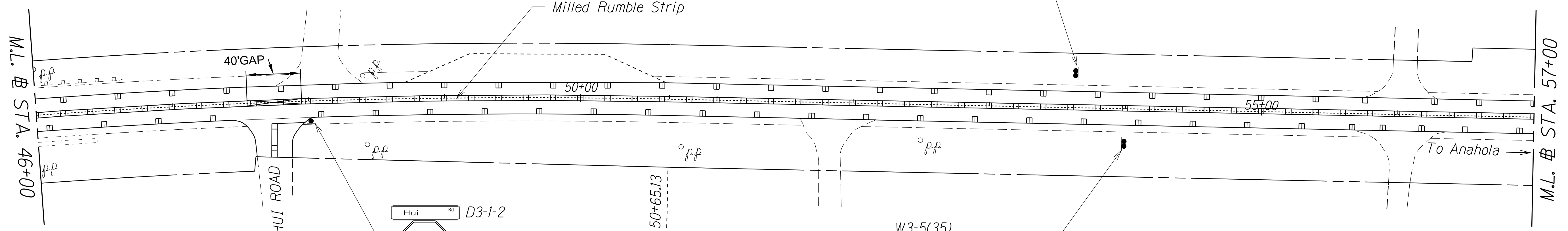
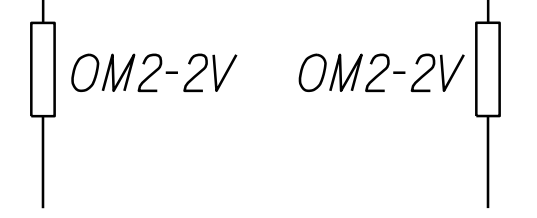
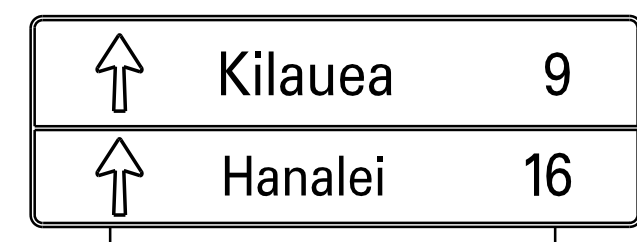
OM3-1(R)
(36"x12")



R2-1(50)
(36"x48")



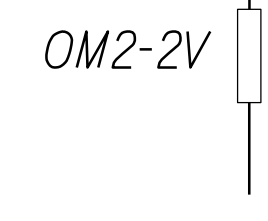
D3-2
(70"x36")



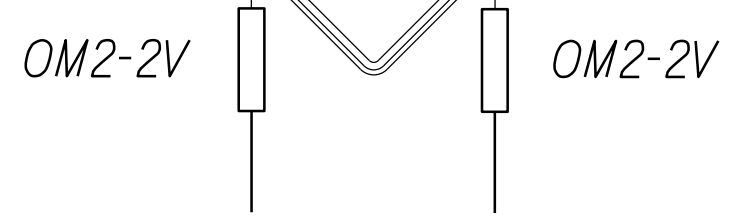
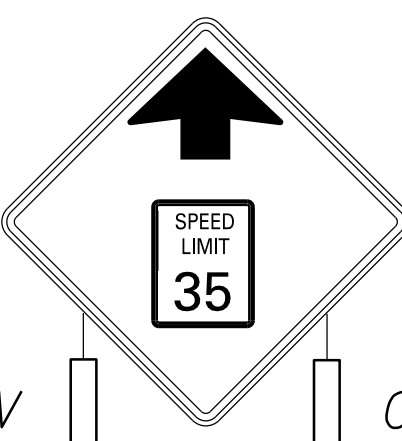
Hui Rd D3-1-2



R1-1
(30"x30")



W3-5(35)
48'x48'



LEGEND FOR AS-BUILT POSTINGS	
	Squiggly line for as-built deletion
	Double line for as-built deletion
Roadway	Text for as-built posting

STATE OF HAWAII
DEPARTMENT OF TRANSPORTATION
HIGHWAYS DIVISION

PAVEMENT MARKING
TRAFFIC SIGNING PLAN

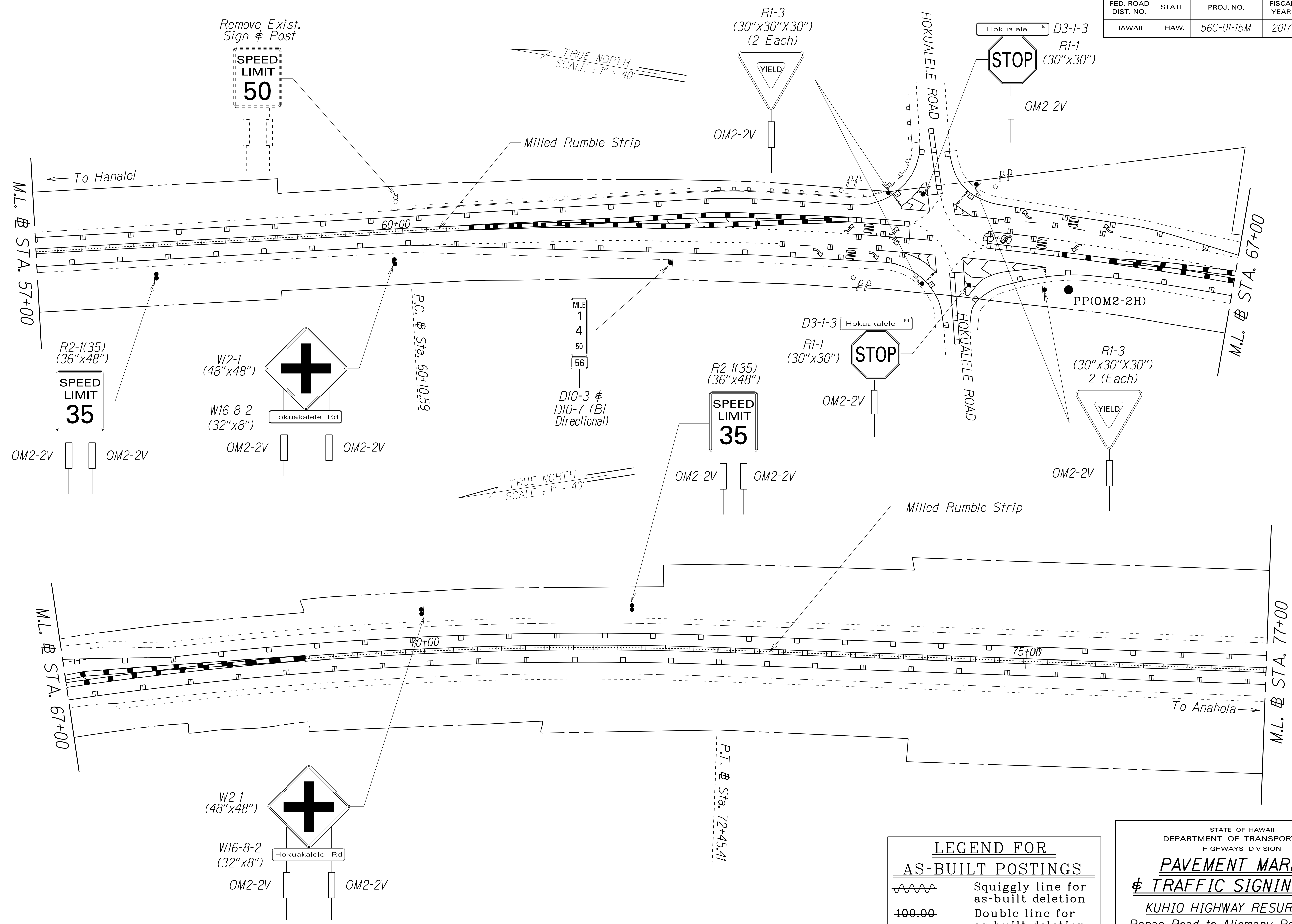
KUHIO HIGHWAY RESURFACING
Papaa Road to Aliomanu Road (South)
Project No. 56C-01-15M

Scale: 1" = 40' Date: August 2016
SHEET No. T4 OF 6 SHEETS

ORIGINAL PLAN	SURVEY PLOTTED BY	DATE
NOTE BOOK	DRAWN BY	
DESIGNED BY	TRACED BY	
CHECKED BY	DESIGNED BY	
	CHECKED BY	

"AS-BUILT"

FED. ROAD DIST. NO.	STATE	PROJ. NO.	FISCAL YEAR	SHEET NO.	TOTAL SHEETS
HAWAII	HAW.	56C-01-15M	2017	18	21



DATE	_____
SURVEY PLOTTED BY	_____
DRAWN BY	_____
TRACED BY	_____
DESIGNED BY	_____
CHECKED BY	_____
ORIGINAL PLAN	_____
NOTE BOOK	_____
DATE	_____
NO.	_____

LEGEND FOR AS-BUILT POSTINGS	
	Squiggly line for as-built deletion
	Double line for as-built deletion
Roadway	Text for as-built posting

STATE OF HAWAII
DEPARTMENT OF TRANSPORTATION
HIGHWAYS DIVISION

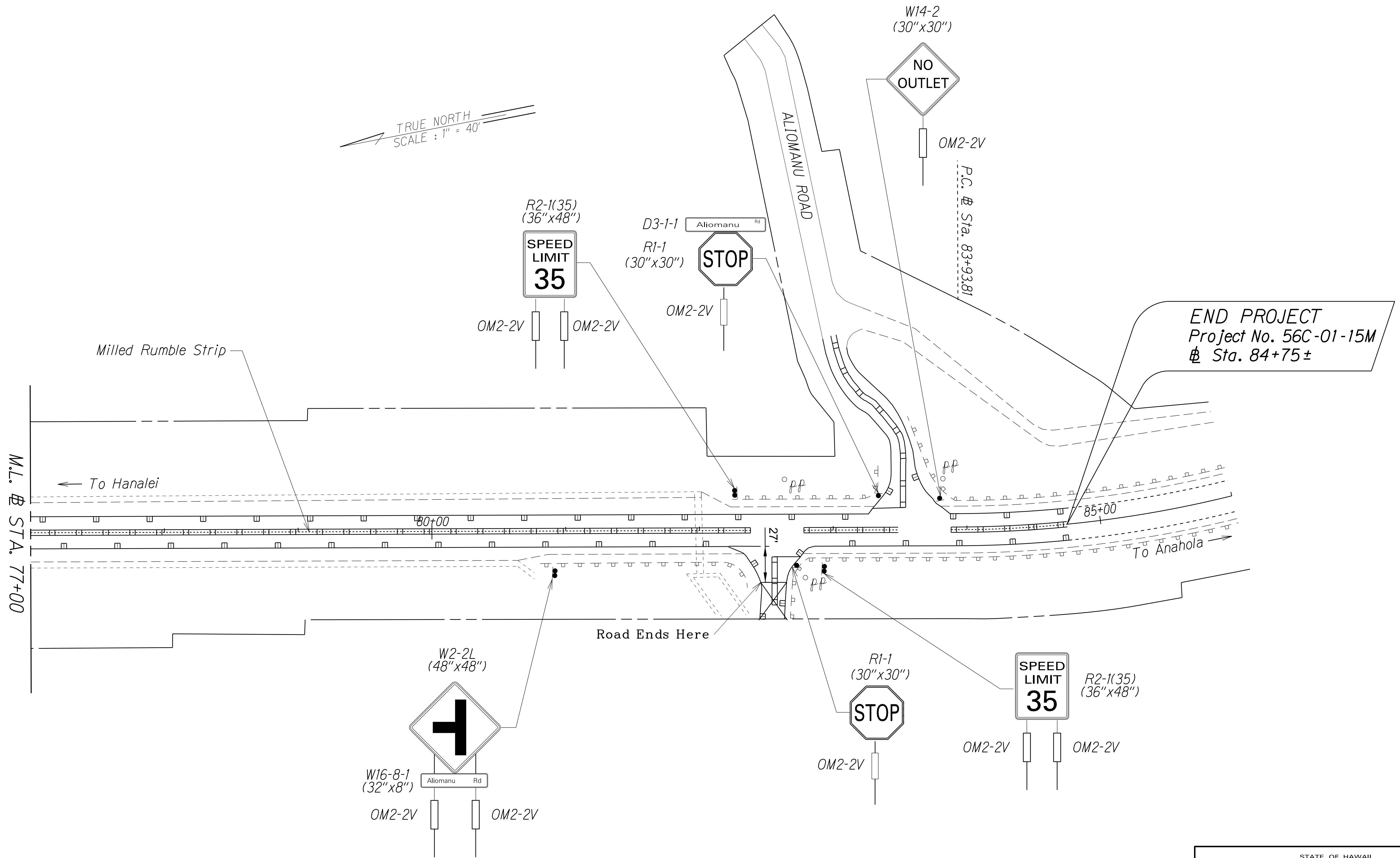
PAVEMENT MARKING
TRAFFIC SIGNING PLAN

KUHIO HIGHWAY RESURFACING
Papaa Road to Aliomanu Road (South)
Project No. 56C-01-15M
Scale: 1" = 40' Date: August 2016
SHEET No. T5 OF 6 SHEETS

"AS-BUILT"

FED. ROAD DIST. NO.	STATE	PROJ. NO.	FISCAL YEAR	SHEET NO.	TOTAL SHEETS
HAWAII	HAW.	56C-01-15M	2017	19	21

TRUE NORTH
SCALE : 1" = 40'



DATE	_____
SURVEY PLOTTED BY	_____
DRAWN BY	_____
TRACED BY	_____
DESIGNED BY	_____
CHECKED BY	_____
ORIGINAL PLAN	_____
NOTE BOOK	_____
DATE	_____
NO.	_____

LEGEND FOR AS-BUILT POSTINGS	
	Squiggly line for as-built deletion
	Double line for as-built deletion
Roadway	Text for as-built posting

STATE OF HAWAII
DEPARTMENT OF TRANSPORTATION
HIGHWAYS DIVISION

PAVEMENT MARKING
TRAFFIC SIGNING PLAN

KUHIO HIGHWAY RESURFACING
Papaa Road to Aliomanu Road (South)
Project No. 56C-01-15M

Scale: 1" = 40' Date: August 2016

SHEET No. T6 OF 6 SHEETS

"AS-BUILT"