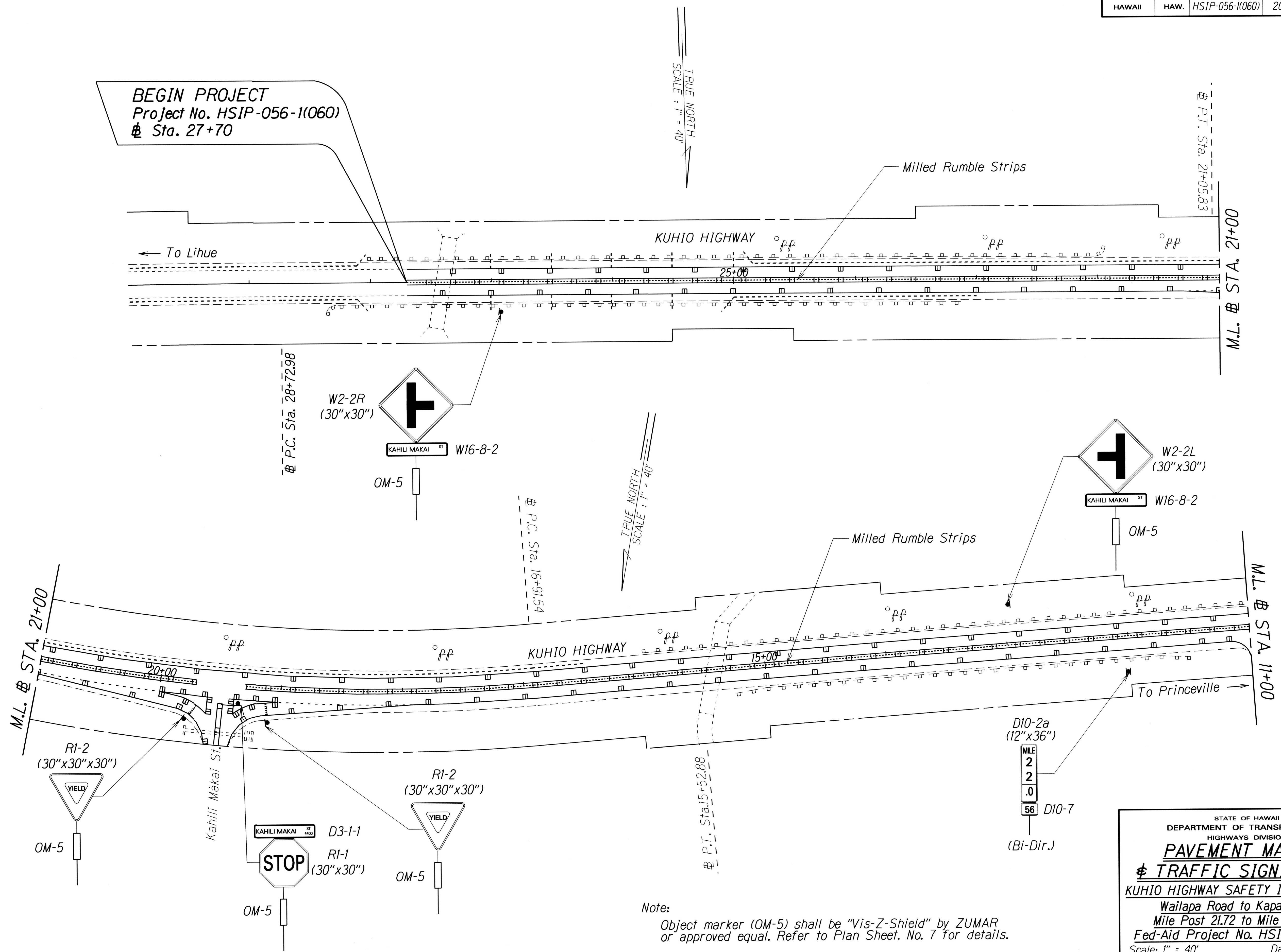


FED. ROAD DIST. NO.	STATE	FED-AID PROJ. NO.	FISCAL YEAR	SHEET NO.	TOTAL SHEETS
HAWAII	HAW.	HSIP-056-1(060)	2017	10	29



BEGIN PROJECT
 Project No. HSIP-056-1(060)
 Sta. 27+70

TRUE NORTH
 SCALE: 1" = 40'

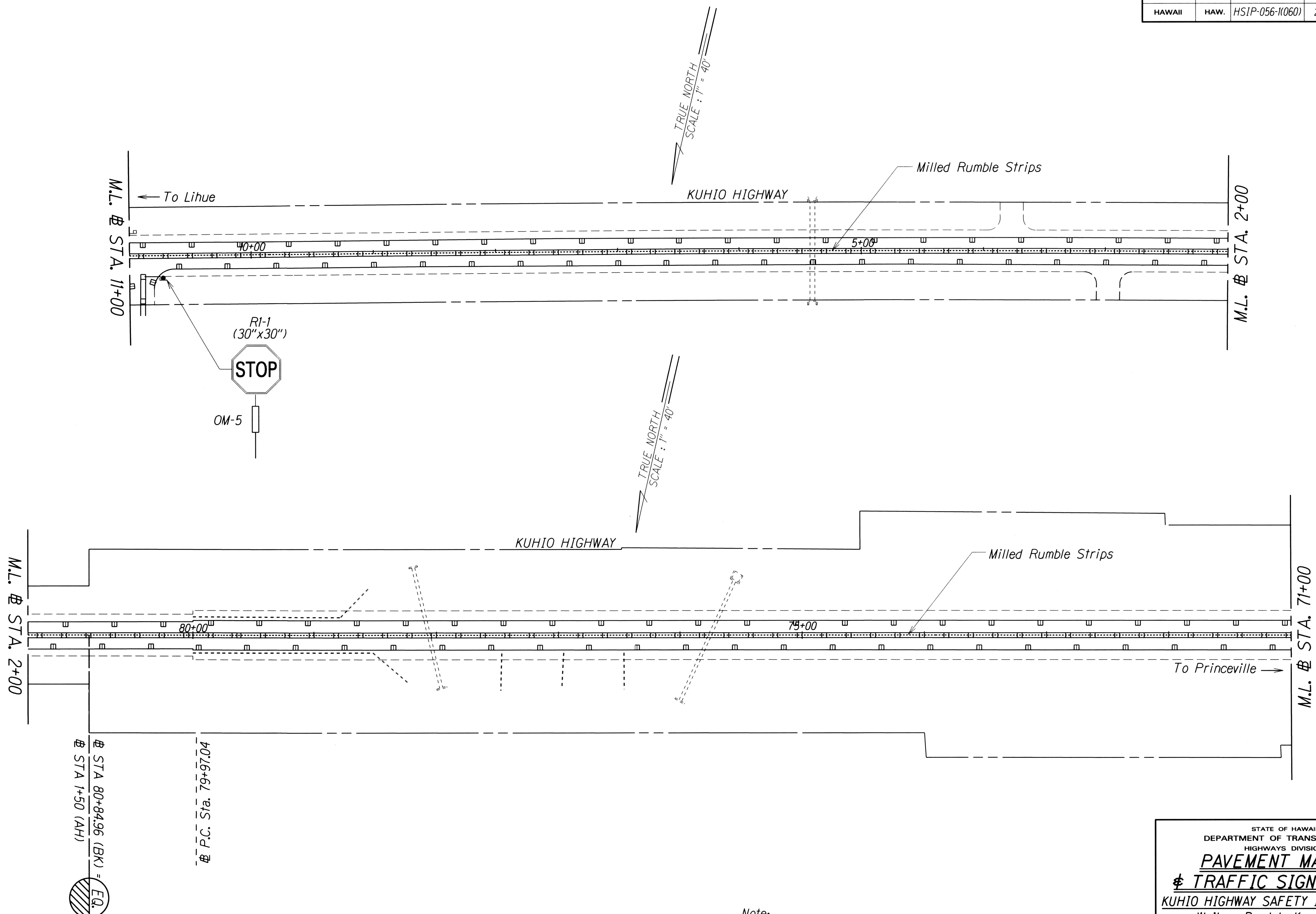
TRUE NORTH
 SCALE: 1" = 40'

ORIGINAL PLAN	DATE
SURVEY PLOTTED BY	
DRAWN BY	
TRACED BY	
DESIGNED BY	
CHECKED BY	

Note:
 Object marker (OM-5) shall be "Vis-Z-Shield" by ZUMAR or approved equal. Refer to Plan Sheet. No. 7 for details.

STATE OF HAWAII
 DEPARTMENT OF TRANSPORTATION
 HIGHWAYS DIVISION
PAVEMENT MARKING
TRAFFIC SIGNING PLAN
 KUHIO HIGHWAY SAFETY IMPROVEMENTS
 Wailapa Road to Kapaka Street
 Mile Post 21.72 to Mile Post 27.32
 Fed-Aid Project No. HSIP-056-1(060)
 Scale: 1" = 40' Date: January 2017
 SHEET No. 10 OF 18 SHEETS

FED. ROAD DIST. NO.	STATE	FED-AID PROJ. NO.	FISCAL YEAR	SHEET NO.	TOTAL SHEETS
HAWAII	HAW.	HSIP-056-1(060)	2017	11	29



ORIGINAL PLAN	SURVEY PLOTTED BY	DATE
NOTE BOOK	DESIGNED BY	
	QUANTITIES BY	
	CHECKED BY	

Note:
Object marker (OM-5) shall be "Vis-Z-Shield" by ZUMAR or approved equal. Refer to Plan Sheet. No. 7 for details.

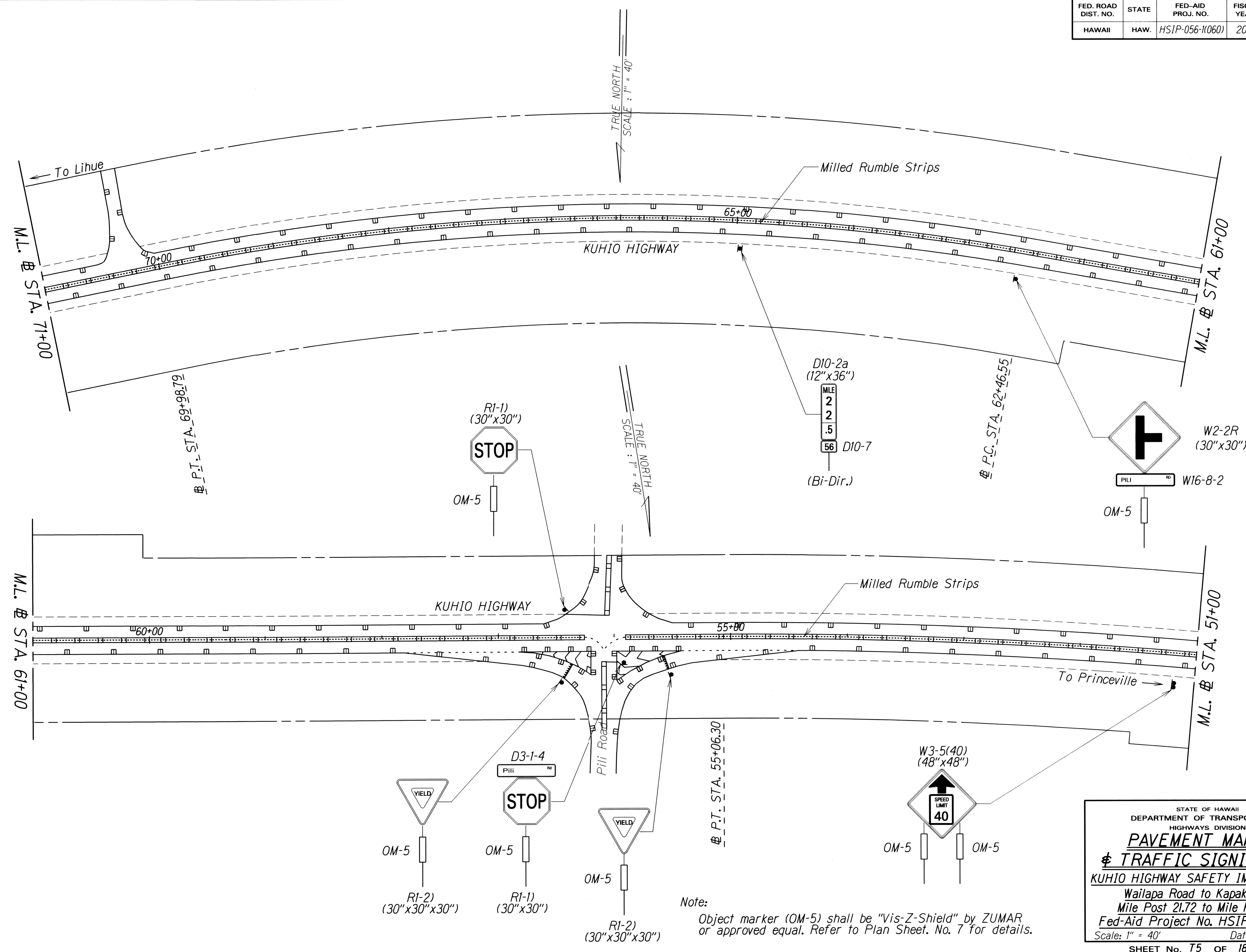
STATE OF HAWAII
DEPARTMENT OF TRANSPORTATION
HIGHWAYS DIVISION

PAVEMENT MARKING
TRAFFIC SIGNING PLAN

KUHIO HIGHWAY SAFETY IMPROVEMENTS
Wailapa Road to Kapaka Street
Mile Post 21.72 to Mile Post 27.32
Fed-Aid Project No. HSIP-056-1(060)
Scale: 1" = 40' Date: January 2017

SHEET No. 11 OF 18 SHEETS

FED. ROAD DIST. NO.	STATE	FED-AID PROJ. NO.	FISCAL YEAR	SHEET NO.	TOTAL SHEETS
HAWAII	HAW.	HSIP-056-1060	2017	12	29

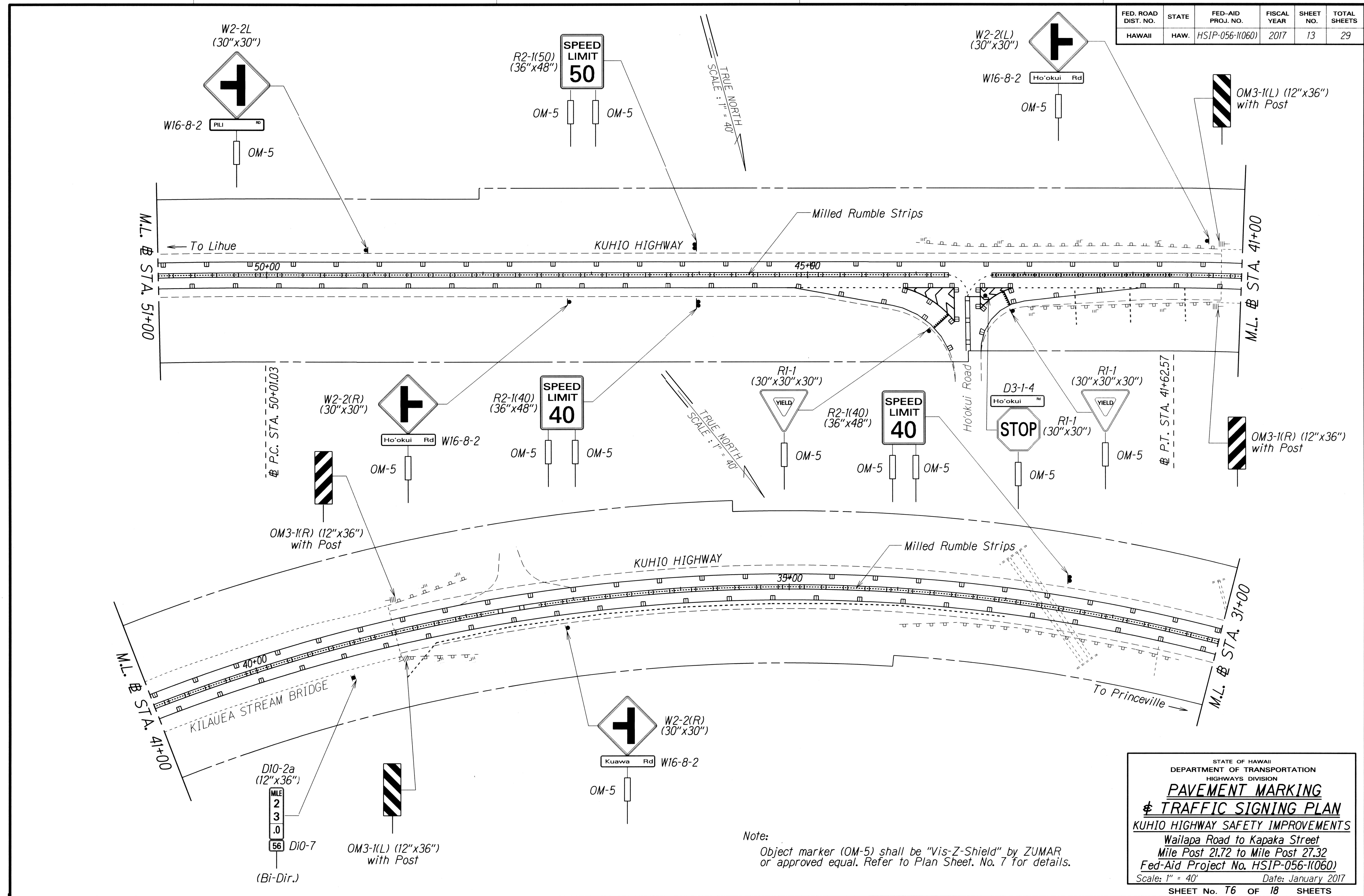


SURVEY PLOTTED BY	DATE
DESIGNED BY	
QUANTITIES BY	
CHECKED BY	

Note: Object marker (OM-5) shall be "Vis-Z-Shield" by ZUMAR or approved equal. Refer to Plan Sheet. No. 7 for details.

STATE OF HAWAII
DEPARTMENT OF TRANSPORTATION
HIGHWAYS DIVISION
PAVEMENT MARKING
TRAFFIC SIGNING PLAN
KUHIO HIGHWAY SAFETY IMPROVEMENTS
Wailapa Road to Kapaka Street
Mile Post 21.72 to Mile Post 27.32
Fed-Aid Project No. HSIP-056-1060
Scale: 1" = 40' Date: January 2017
SHEET No. 12 OF 18 SHEETS

FED. ROAD DIST. NO.	STATE	FED-AID PROJ. NO.	FISCAL YEAR	SHEET NO.	TOTAL SHEETS
HAWAII	HAW.	HSIP-056-1(060)	2017	13	29



SURVEY PLOTTED BY	DATE
DESIGNED BY	
TRACED BY	
DESIGNED BY	
QUANTITIES BY	
CHECKED BY	

Note:
Object marker (OM-5) shall be "Vis-Z-Shield" by ZUMAR or approved equal. Refer to Plan Sheet No. 7 for details.

STATE OF HAWAII
DEPARTMENT OF TRANSPORTATION
HIGHWAYS DIVISION

**PAVEMENT MARKING
& TRAFFIC SIGNING PLAN**

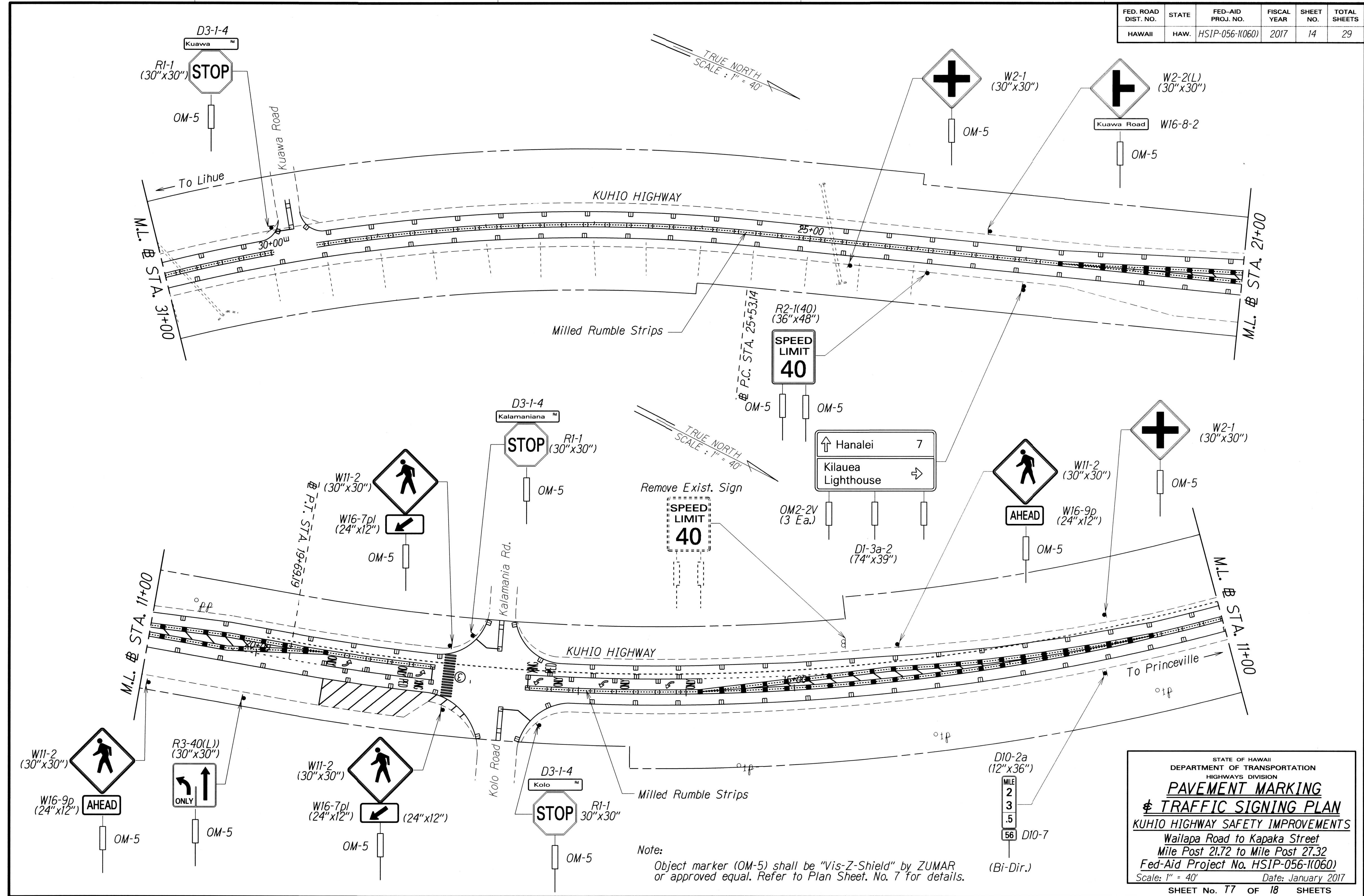
KUHIO HIGHWAY SAFETY IMPROVEMENTS

Wailapa Road to Kapaka Street
Mile Post 21.72 to Mile Post 27.32
Fed-Aid Project No. HSIP-056-1(060)

Scale: 1" = 40' Date: January 2017

SHEET No. T6 OF 18 SHEETS

FED. ROAD DIST. NO.	STATE	FED-AID PROJ. NO.	FISCAL YEAR	SHEET NO.	TOTAL SHEETS
HAWAII	HAW.	HSIP-056-1(060)	2017	14	29



SURVEY PLOTTED BY	DATE
PLAN	
NOTE BOOK	DESIGNED BY
QUANTITIES BY	CHECKED BY

Note:
Object marker (OM-5) shall be "Vis-Z-Shield" by ZUMAR or approved equal. Refer to Plan Sheet, No. 7 for details.

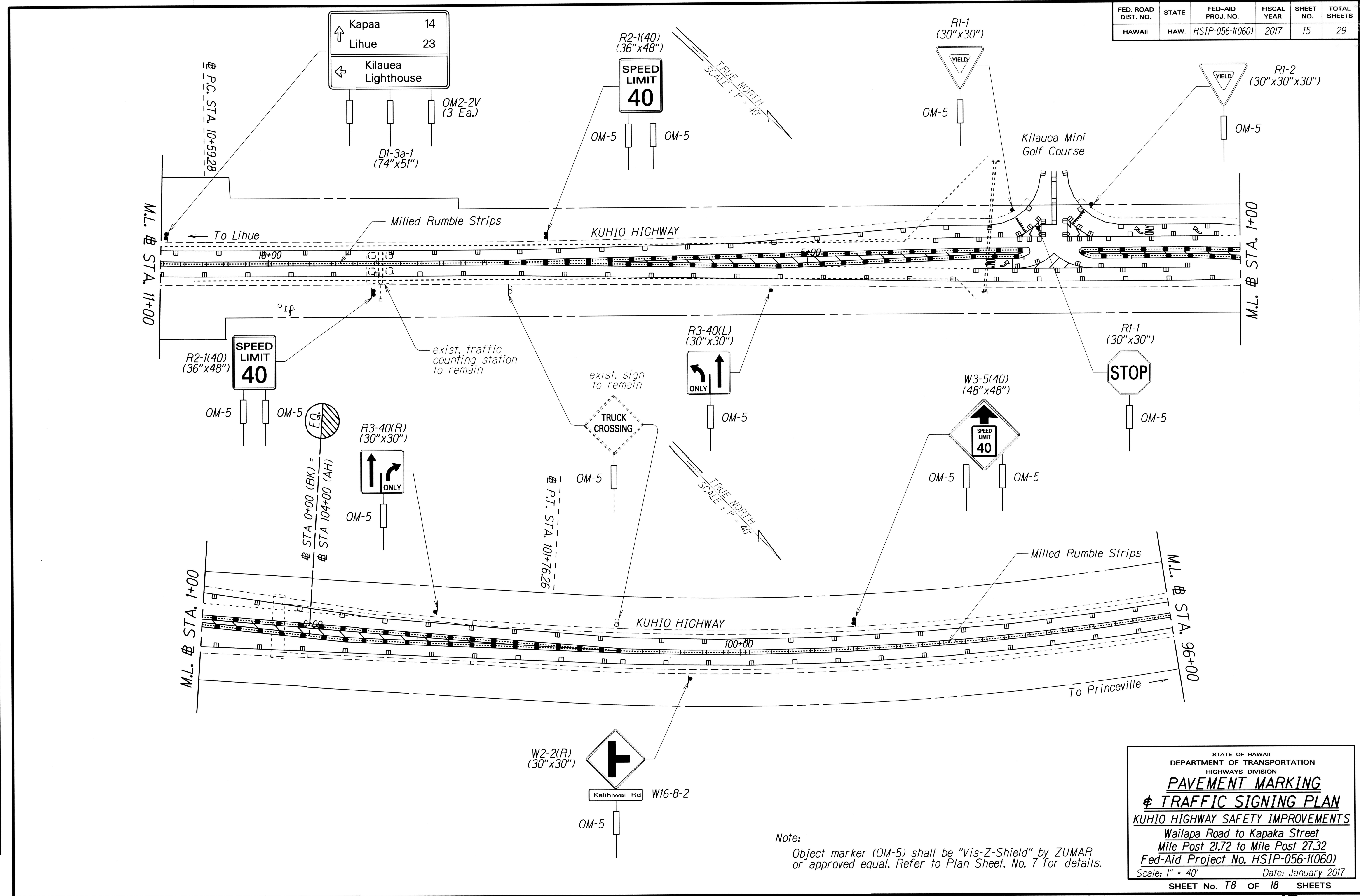
STATE OF HAWAII
DEPARTMENT OF TRANSPORTATION
HIGHWAYS DIVISION

PAVEMENT MARKING
TRAFFIC SIGNING PLAN

KUHIO HIGHWAY SAFETY IMPROVEMENTS
Wailapa Road to Kapaka Street
Mile Post 21.72 to Mile Post 27.32
Fed-Aid Project No. HSIP-056-1(060)
Scale: 1" = 40' Date: January 2017

SHEET No. 14 OF 18 SHEETS

FED. ROAD DIST. NO.	STATE	FED-AID PROJ. NO.	FISCAL YEAR	SHEET NO.	TOTAL SHEETS
HAWAII	HAW.	HSIP-056-1(060)	2017	15	29



SURVEY PLOTTED BY	DATE
DRAWN BY	
TRACED BY	
QUANTITIES BY	
CHECKED BY	
ORIGINAL PLAN	
NOTE BOOK	
DATE	
NO.	

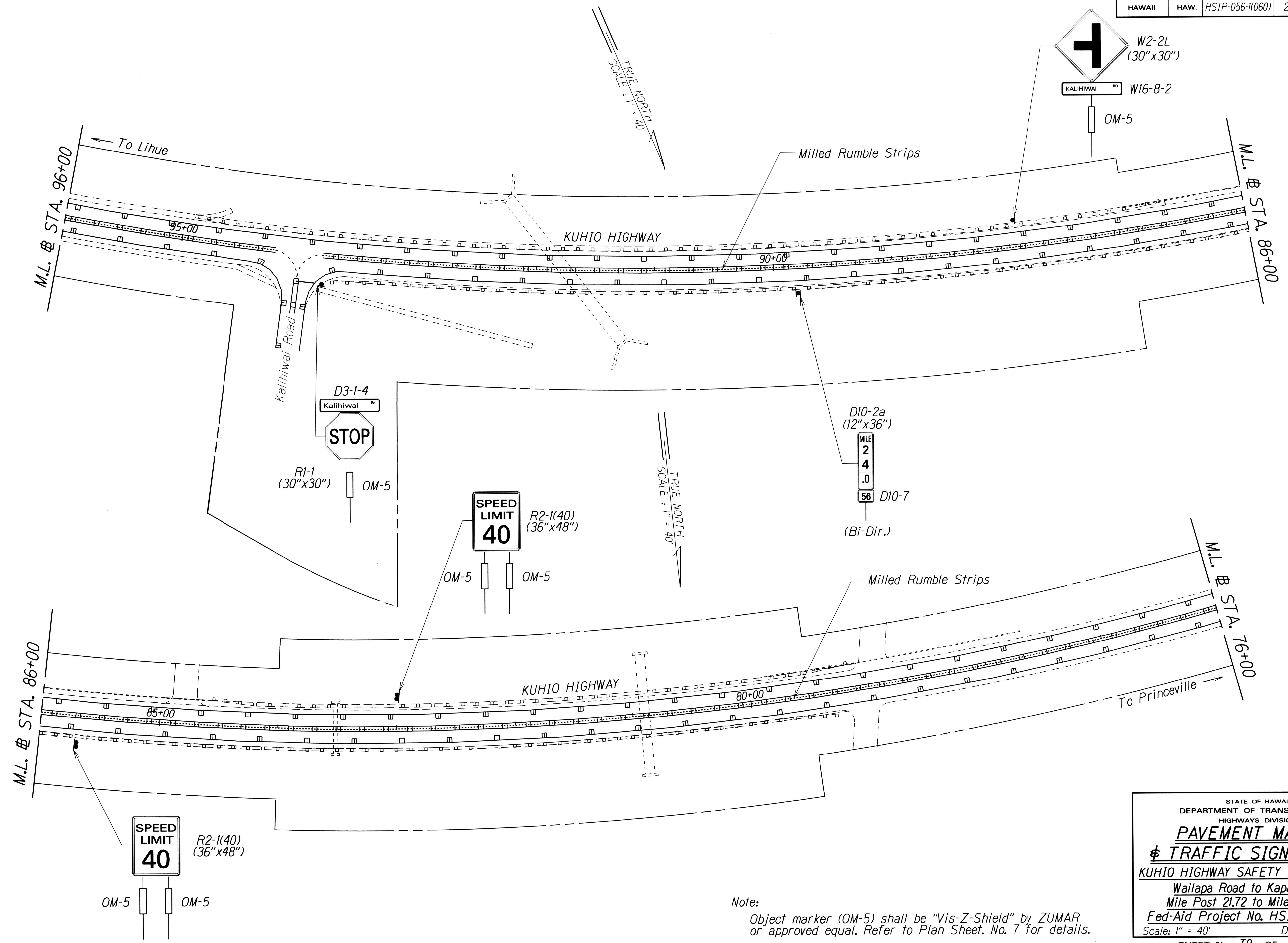
Note: Object marker (OM-5) shall be "Vis-Z-Shield" by ZUMAR or approved equal. Refer to Plan Sheet. No. 7 for details.

STATE OF HAWAII
DEPARTMENT OF TRANSPORTATION
HIGHWAYS DIVISION

PAVEMENT MARKING
TRAFFIC SIGNING PLAN

KUHIO HIGHWAY SAFETY IMPROVEMENTS
Wailapa Road to Kapaka Street
Mile Post 21.72 to Mile Post 27.32
Fed-Aid Project No. HSIP-056-1(060)
Scale: 1" = 40' Date: January 2017

FED. ROAD DIST. NO.	STATE	FED-AID PROJ. NO.	FISCAL YEAR	SHEET NO.	TOTAL SHEETS
HAWAII	HAW.	HSIP-056-1(060)	2017	16	29

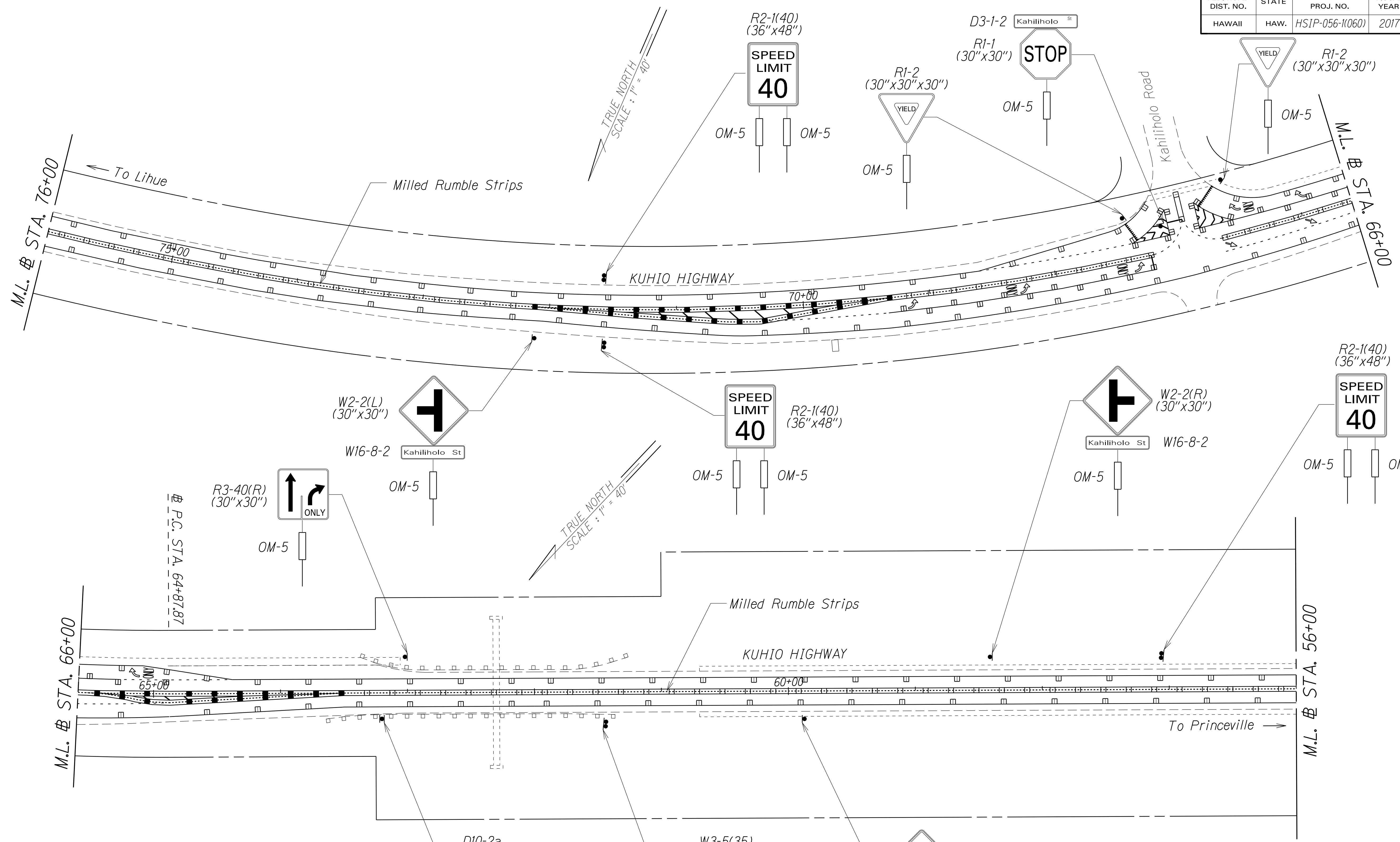


SURVEY PLOTTED BY	DATE
DRAWN BY	
DESIGNED BY	
QUANTITIES BY	
CHECKED BY	
ORIGINAL PLAN	
NOTE BOOK	
DATE	
CHECKED BY	

Note:
Object marker (OM-5) shall be "Vis-Z-Shield" by ZUMAR or approved equal. Refer to Plan Sheet, No. 7 for details.

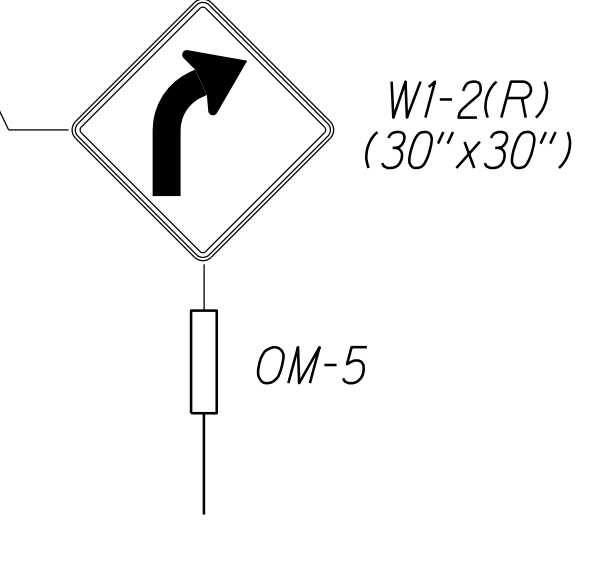
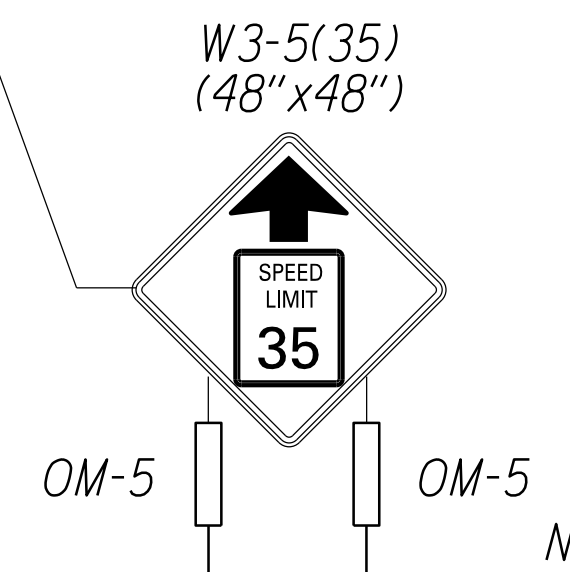
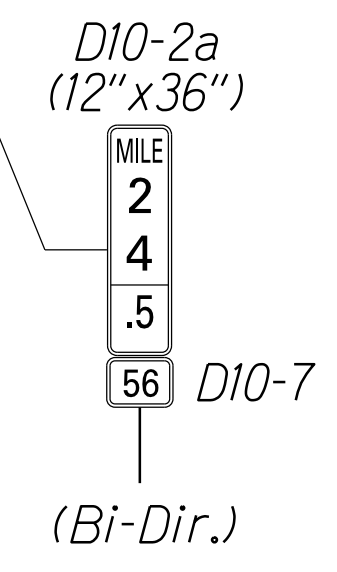
STATE OF HAWAII
DEPARTMENT OF TRANSPORTATION
HIGHWAYS DIVISION
PAVEMENT MARKING
TRAFFIC SIGNING PLAN
KUHIO HIGHWAY SAFETY IMPROVEMENTS
Wailapa Road to Kapaka Street
Mile Post 21.72 to Mile Post 27.32
Fed-Aid Project No. HSIP-056-1(060)
Scale: 1" = 40' Date: January 2017
SHEET No. 16 OF 18 SHEETS

FED. ROAD DIST. NO.	STATE	FED-AID PROJ. NO.	FISCAL YEAR	SHEET NO.	TOTAL SHEETS
HAWAII	HAW.	HSIP-056-11060	2017	17	29



LEGEND FOR AS-BUILT POSTINGS

	Squiggly line for as-built deletion
	Double line for as-built deletion
Roadway	Text for as-built posting



Note: Object marker (OM-5) shall be "Vis-Z-Shield" by ZUMAR or approved equal. Refer to Plan Sheet, No. 7 for details.

SURVEY PLOTTED BY	DATE
DRAWN BY	
TRACED BY	
DESIGNED BY	
CHECKED BY	
ORIGINAL PLAN	
NOTE BOOK	
DATE	
BY	
CHECKED BY	
DATE	

STATE OF HAWAII
DEPARTMENT OF TRANSPORTATION
HIGHWAYS DIVISION

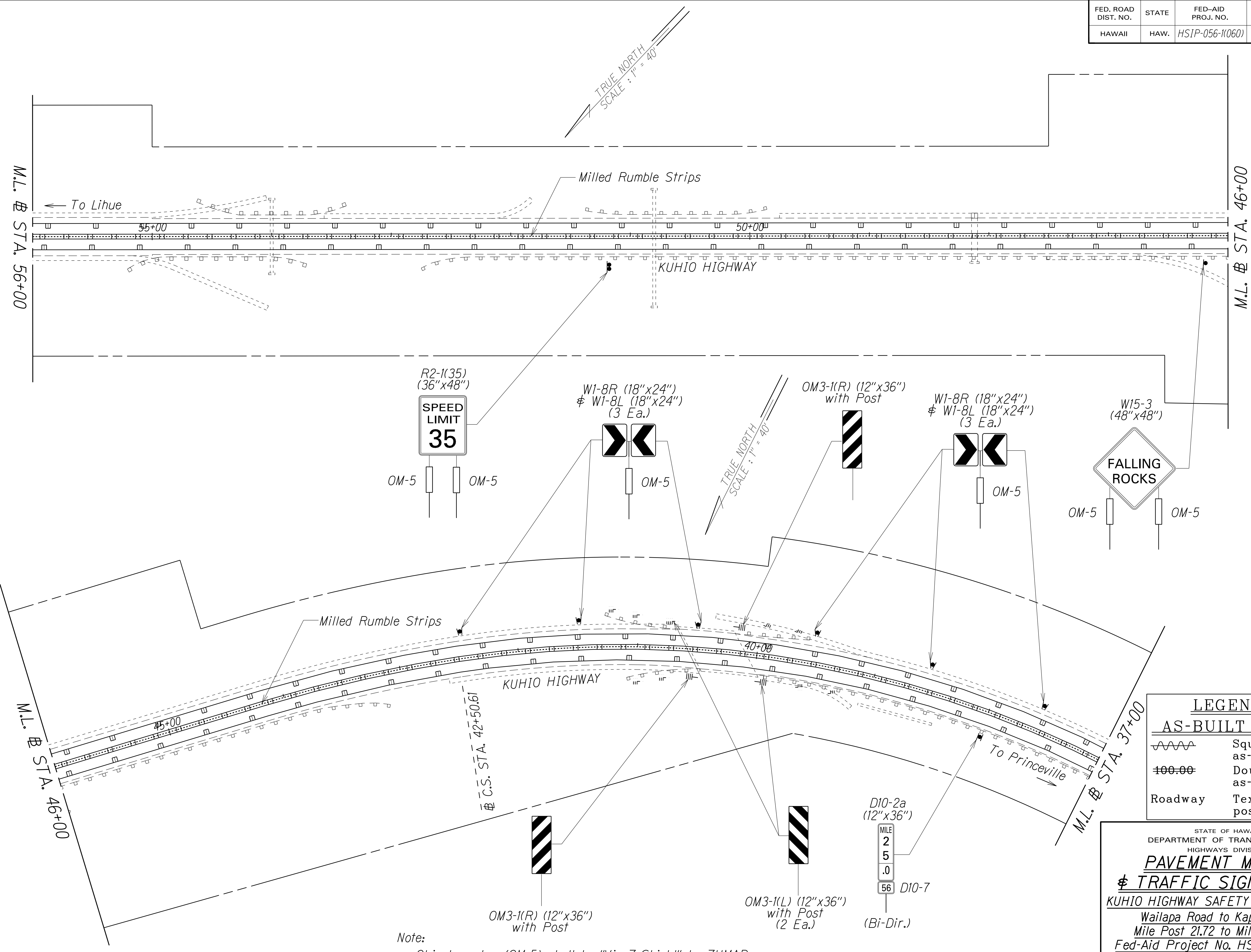
PAVEMENT MARKING
TRAFFIC SIGNING PLAN

KUHIO HIGHWAY SAFETY IMPROVEMENTS
Wailapa Road to Kapaka Street
Mile Post 21.72 to Mile Post 27.32
Fed-Aid Project No. HSIP-056-11060
Scale: 1" = 40' Date: January 2017

SHEET No. T10 OF 18 SHEETS

"AS-BUILT"

FED. ROAD DIST. NO.	STATE	FED-AID PROJ. NO.	FISCAL YEAR	SHEET NO.	TOTAL SHEETS
HAWAII	HAW.	HSIP-056-11060	2017	18	29



SURVEY PLOTTED BY	DATE
DRAWN BY	
TRACED BY	
DESIGNED BY	
CHECKED BY	
ORIGINAL PLAN	
NOTE BOOK	
DATE	
NO.	

Note:
Object marker (OM-5) shall be "Vis-Z-Shield" by ZUMAR or approved equal. Refer to Plan Sheet No. 7 for details.

	Squiggly line for as-built deletion
	Double line for as-built deletion
Roadway	Text for as-built posting

STATE OF HAWAII
DEPARTMENT OF TRANSPORTATION
HIGHWAYS DIVISION

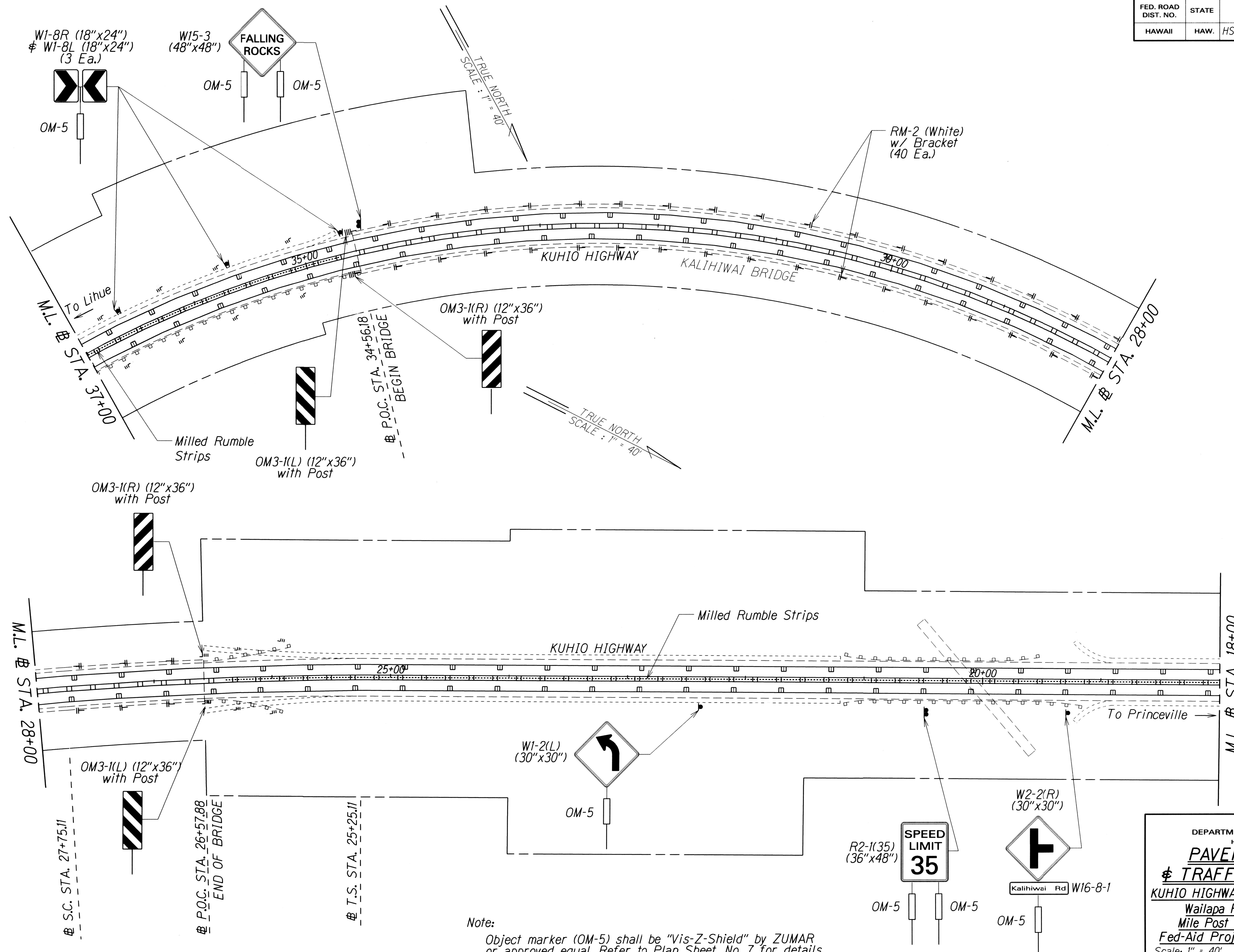
PAVEMENT MARKING
& TRAFFIC SIGNING PLAN

KUHIO HIGHWAY SAFETY IMPROVEMENTS
Wailapa Road to Kapaka Street
Mile Post 21.72 to Mile Post 27.32
Fed-Aid Project No. HSIP-056-11060
Scale: 1" = 40' Date: January 2017

SHEET No. 111 OF 118 SHEETS

"AS-BUILT"

FED. ROAD DIST. NO.	STATE	FED-AID PROJ. NO.	FISCAL YEAR	SHEET NO.	TOTAL SHEETS
HAWAII	HAW.	HSIP-056-1(060)	2017	19	29

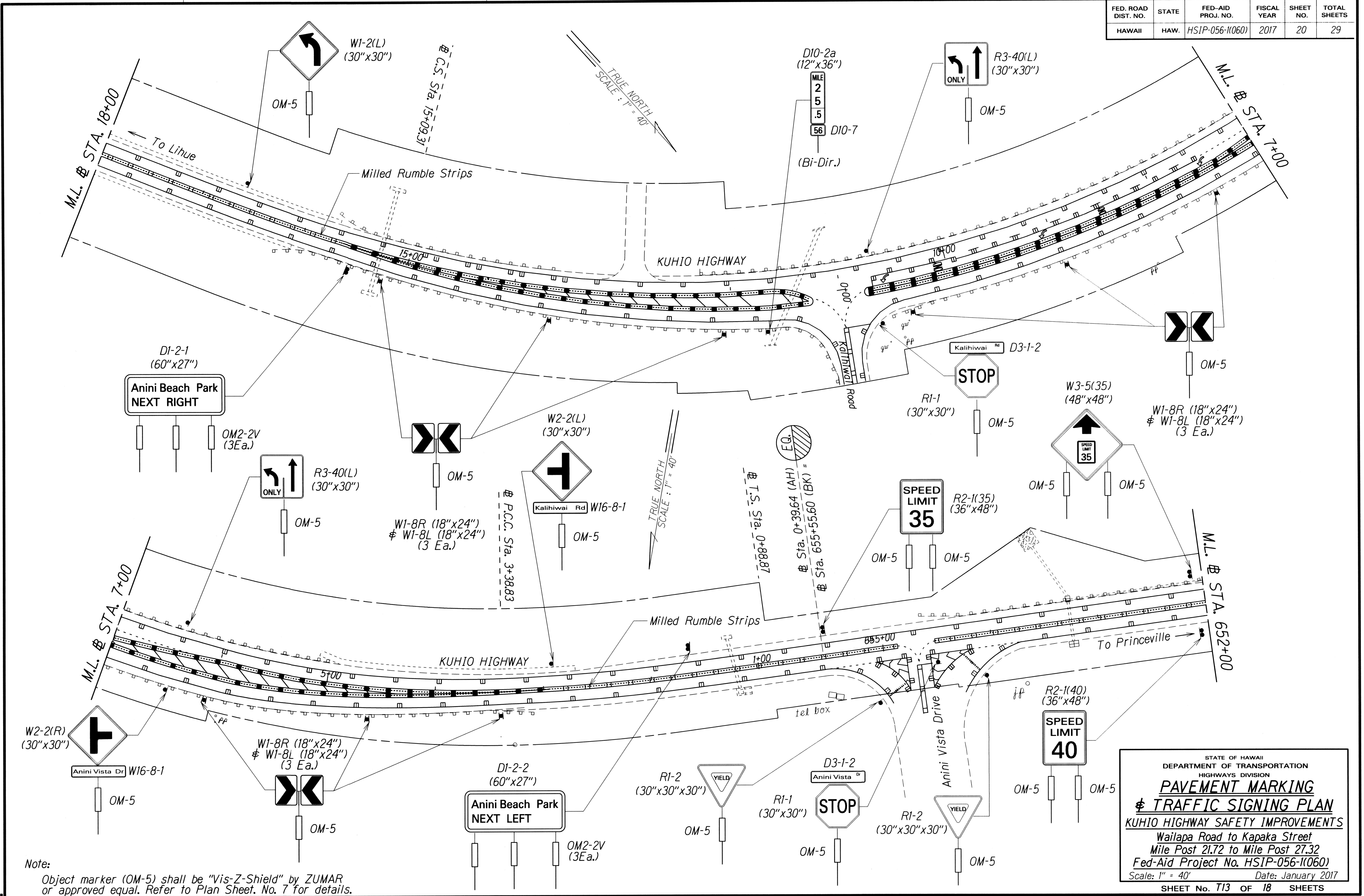


SURVEY DRAFTED BY	DATE
DRAWN BY	
DESIGNED BY	
CHECKED BY	
ORIGINAL PLAN	
NOTE BOOK	
QUANTITIES BY	
CHECKED BY	

Note:
Object marker (OM-5) shall be "Vis-Z-Shield" by ZUMAR or approved equal. Refer to Plan Sheet. No. 7 for details.

STATE OF HAWAII
DEPARTMENT OF TRANSPORTATION
HIGHWAYS DIVISION
PAVEMENT MARKING
& TRAFFIC SIGNING PLAN
KUHIO HIGHWAY SAFETY IMPROVEMENTS
Wailapa Road to Kapaka Street
Mile Post 21.72 to Mile Post 27.32
Fed-Aid Project No. HSIP-056-1(060)
Scale: 1" = 40' Date: January 2017
SHEET No. T12 OF 18 SHEETS

FED. ROAD DIST. NO.	STATE	FED-AID PROJ. NO.	FISCAL YEAR	SHEET NO.	TOTAL SHEETS
HAWAII	HAW.	HSIP-056-11060	2017	20	29

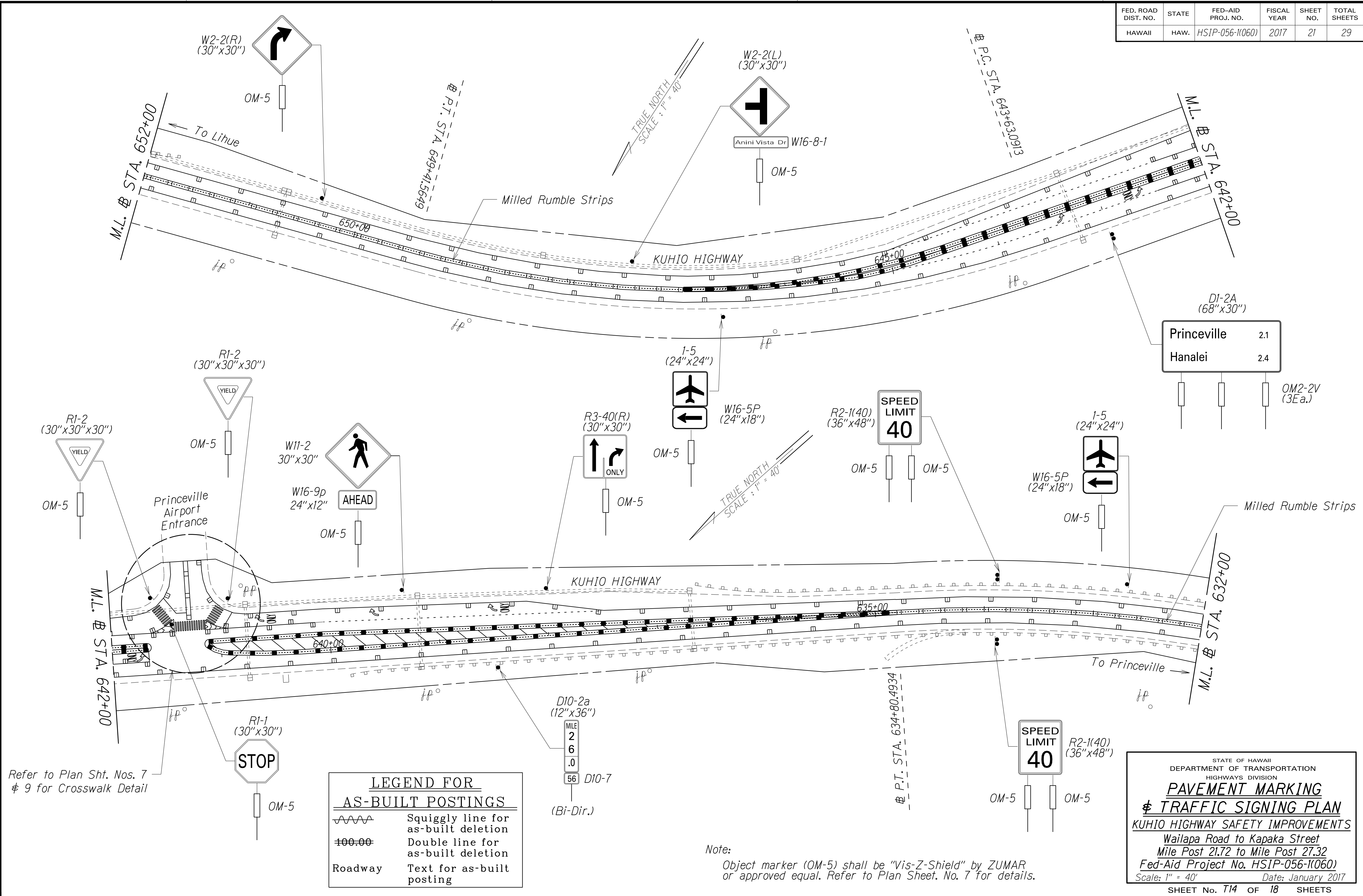


SURVEY PLOTTED BY	DATE
DESIGNED BY	
TRACED BY	
DESIGNED BY	
QUANTITIES BY	
CHECKED BY	
ORIGINAL PLAN	
NOTE BOOK	
NO.	

Note:
Object marker (OM-5) shall be "Vis-Z-Shield" by ZUMAR or approved equal. Refer to Plan Sheet. No. 7 for details.

STATE OF HAWAII
DEPARTMENT OF TRANSPORTATION
HIGHWAYS DIVISION
PAVEMENT MARKING
TRAFFIC SIGNING PLAN
KUHIO HIGHWAY SAFETY IMPROVEMENTS
Wailapa Road to Kapaka Street
Mile Post 21.72 to Mile Post 27.32
Fed-Aid Project No. HSIP-056-11060
Scale: 1" = 40' Date: January 2017
SHEET No. 113 OF 18 SHEETS

FED. ROAD DIST. NO.	STATE	FED-AID PROJ. NO.	FISCAL YEAR	SHEET NO.	TOTAL SHEETS
HAWAII	HAW.	HSIP-056-11060	2017	21	29



Refer to Plan Sht. Nos. 7 & 9 for Crosswalk Detail

LEGEND FOR AS-BUILT POSTINGS	
	Squiggly line for as-built deletion
	Double line for as-built deletion
Roadway	Text for as-built posting

Note: Object marker (OM-5) shall be "Vis-Z-Shield" by ZUMAR or approved equal. Refer to Plan Sheet. No. 7 for details.

STATE OF HAWAII
DEPARTMENT OF TRANSPORTATION
HIGHWAYS DIVISION

PAVEMENT MARKING & TRAFFIC SIGNING PLAN

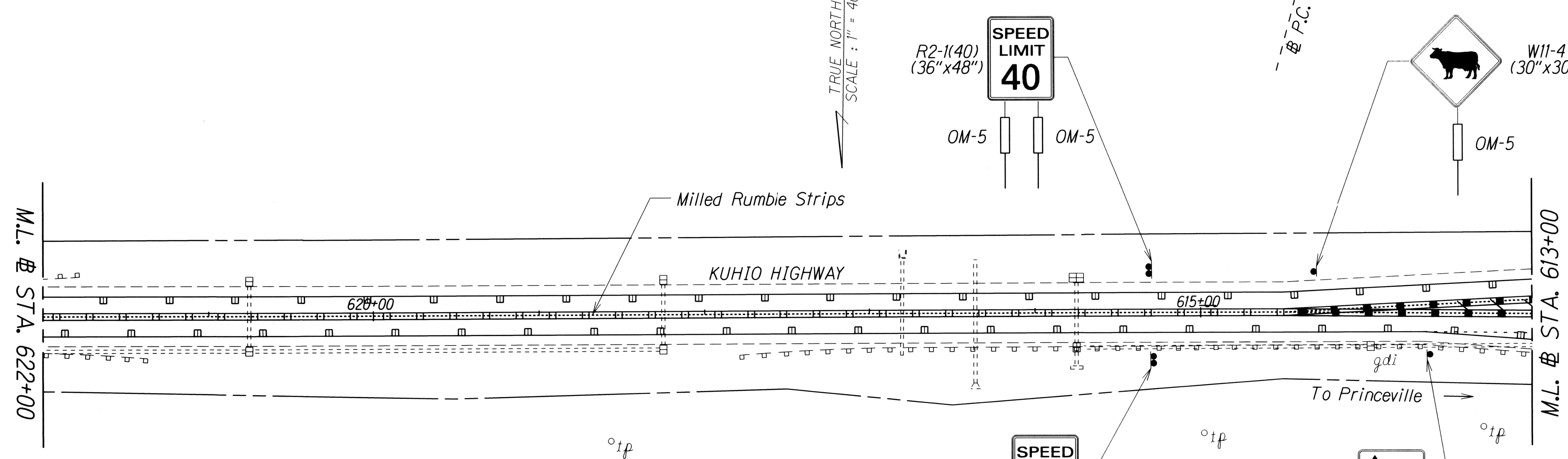
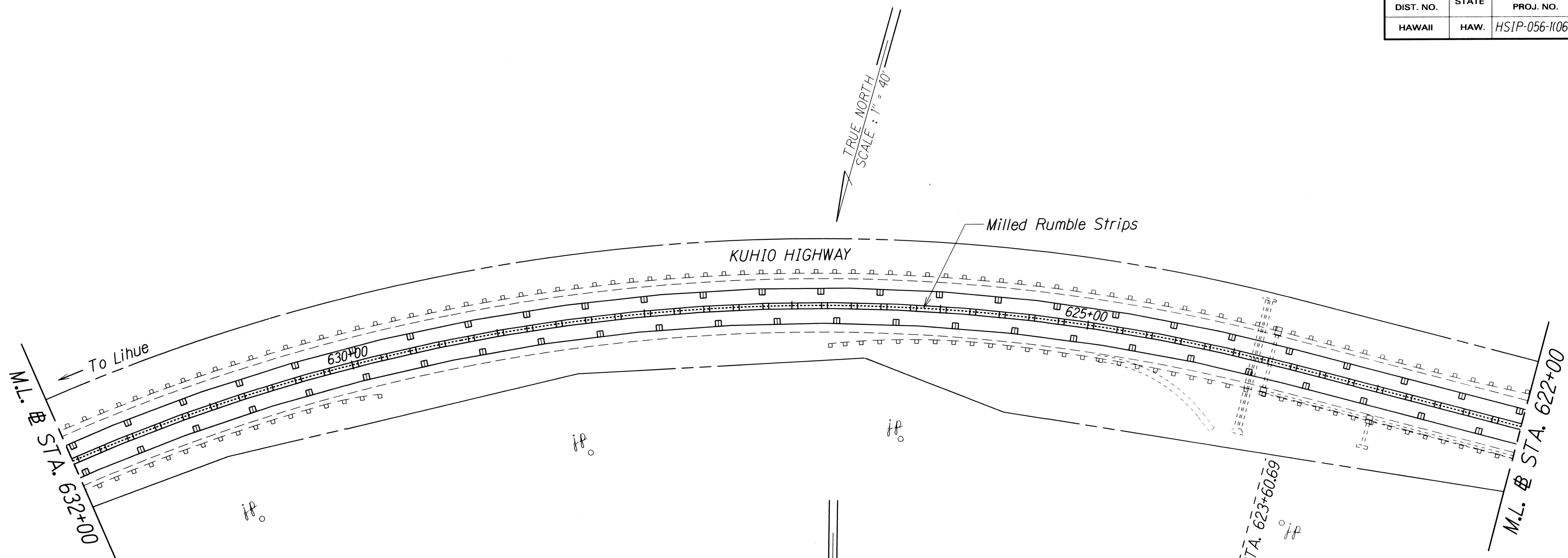
KUHIO HIGHWAY SAFETY IMPROVEMENTS
Wailapa Road to Kapaka Street
Mile Post 21.72 to Mile Post 27.32
Fed-Aid Project No. HSIP-056-11060
Scale: 1" = 40' Date: JANUARY 2017

SHEET No. T14 OF 18 SHEETS

ORIGINAL PLAN	DATE
SURVEY PLOTTED BY	
DRAWN BY	
TRACED BY	
DESIGNED BY	
CHECKED BY	

"AS-BUILT"

FED. ROAD DIST. NO.	STATE	FED-AID PROJ. NO.	FISCAL YEAR	SHEET NO.	TOTAL SHEETS
HAWAII	HAW.	HSIP-056-1(060)	2017	22	29



ORIGINAL PLAN	DATE
SURVEY PLOTTED BY	
DRAWN BY	
TRACED BY	
DESIGNED BY	
QUANTITIES BY	
CHECKED BY	

Note:
Object marker (OM-5) shall be "Vis-Z-Shield" by ZUMAR or approved equal. Refer to Plan Sheet No. 7 for details.

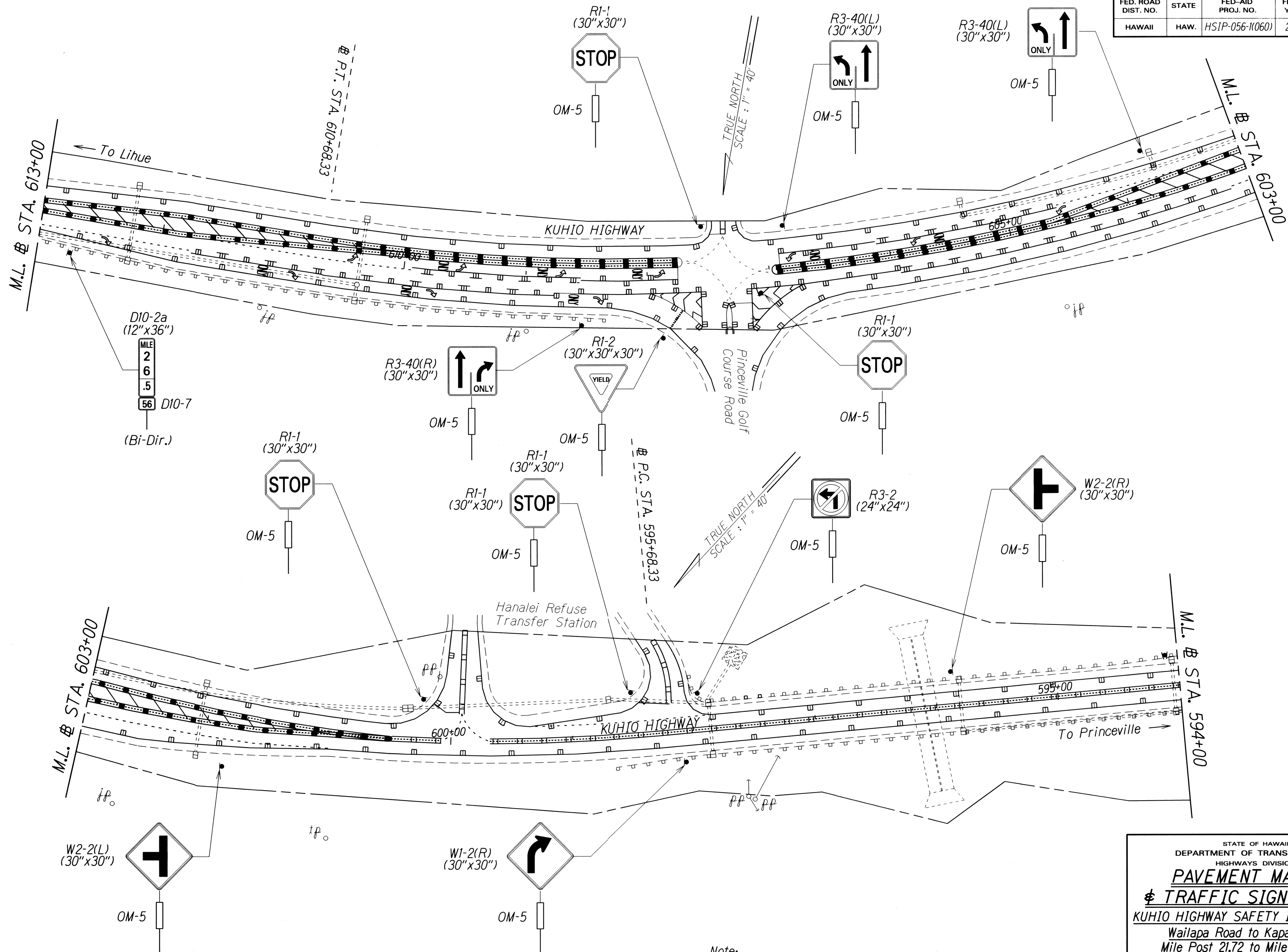
STATE OF HAWAII
DEPARTMENT OF TRANSPORTATION
HIGHWAYS DIVISION

**PAVEMENT MARKING
& TRAFFIC SIGNING PLAN**

KUHIO HIGHWAY SAFETY IMPROVEMENTS
Wailapa Road to Kapaka Street
Mile Post 21.72 to Mile Post 27.32
Fed-Aid Project No. HSIP-056-1(060)
Scale: 1" = 40' Date: January 2017

SHEET No. 115 OF 18 SHEETS

FED. ROAD DIST. NO.	STATE	FED-AID PROJ. NO.	FISCAL YEAR	SHEET NO.	TOTAL SHEETS
HAWAII	HAW.	HSIP-056-1(060)	2017	23	29

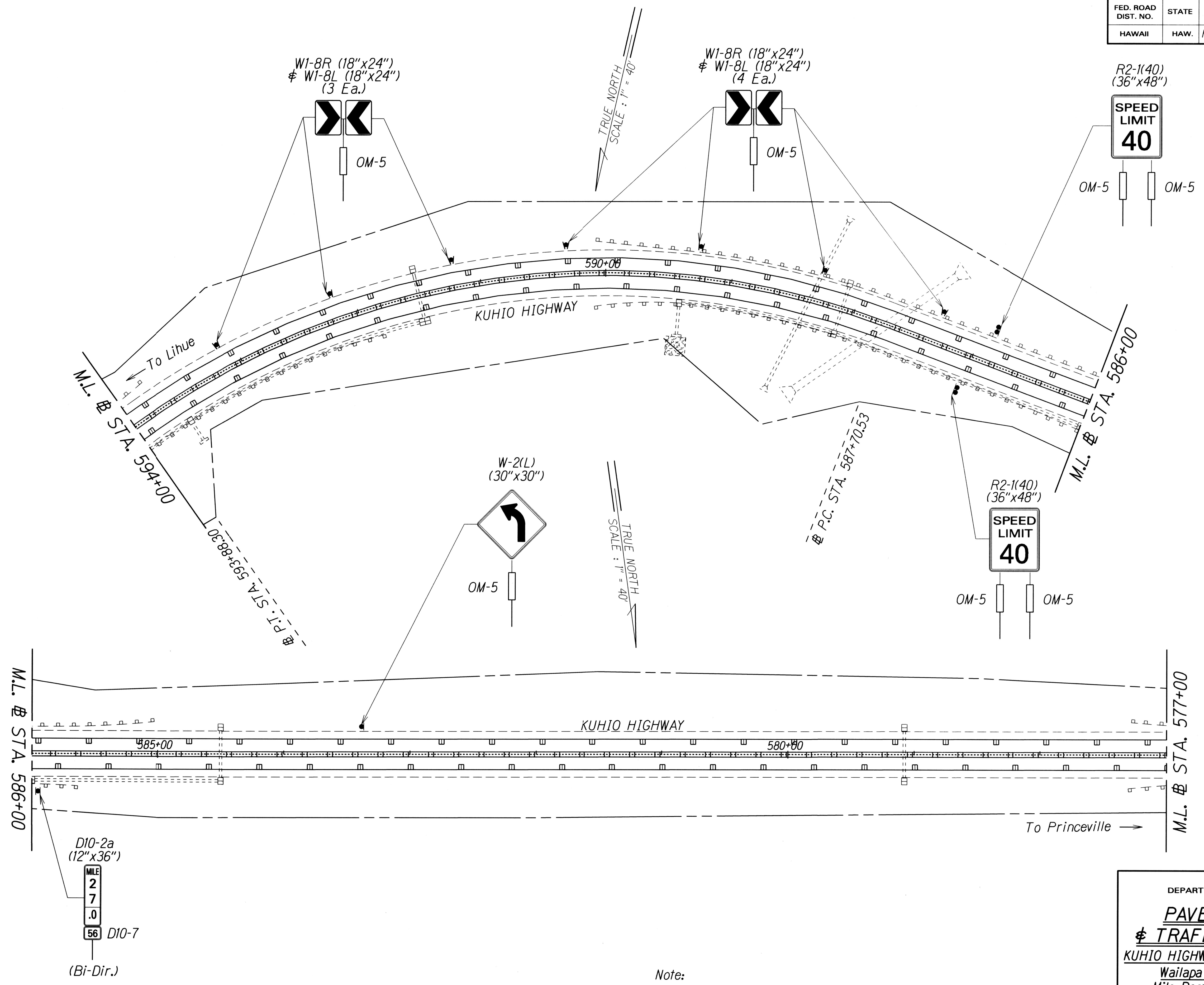


ORIGINAL PLAN	DATE
DESIGNED BY	
TRACED BY	
DESIGNED BY	
QUANTITIES BY	
CHECKED BY	

Note:
Object marker (OM-5) shall be "Vis-Z-Shield" by ZUMAR or approved equal. Refer to Plan Sheet, No. 7 for details.

STATE OF HAWAII
DEPARTMENT OF TRANSPORTATION
HIGHWAYS DIVISION
PAVEMENT MARKING
& TRAFFIC SIGNING PLAN
KUHIO HIGHWAY SAFETY IMPROVEMENTS
Wailapa Road to Kapaka Street
Mile Post 21.72 to Mile Post 27.32
Fed-Aid Project No. HSIP-056-1(060)
Scale: 1" = 40' Date: January 2017
SHEET No. 116 OF 18 SHEETS

FED. ROAD DIST. NO.	STATE	FED-AID PROJ. NO.	FISCAL YEAR	SHEET NO.	TOTAL SHEETS
HAWAII	HAW.	HSIP-056-1(060)	2017	24	29



ORIGINAL PLAN	DATE
SURVEY PLOTTED BY	
DRAWN BY	
DESIGNED BY	
CHECKED BY	

Note:
Object marker (OM-5) shall be "Vis-Z-Shield" by ZUMAR or approved equal. Refer to Plan Sheet. No. 7 for details.

STATE OF HAWAII
DEPARTMENT OF TRANSPORTATION
HIGHWAYS DIVISION

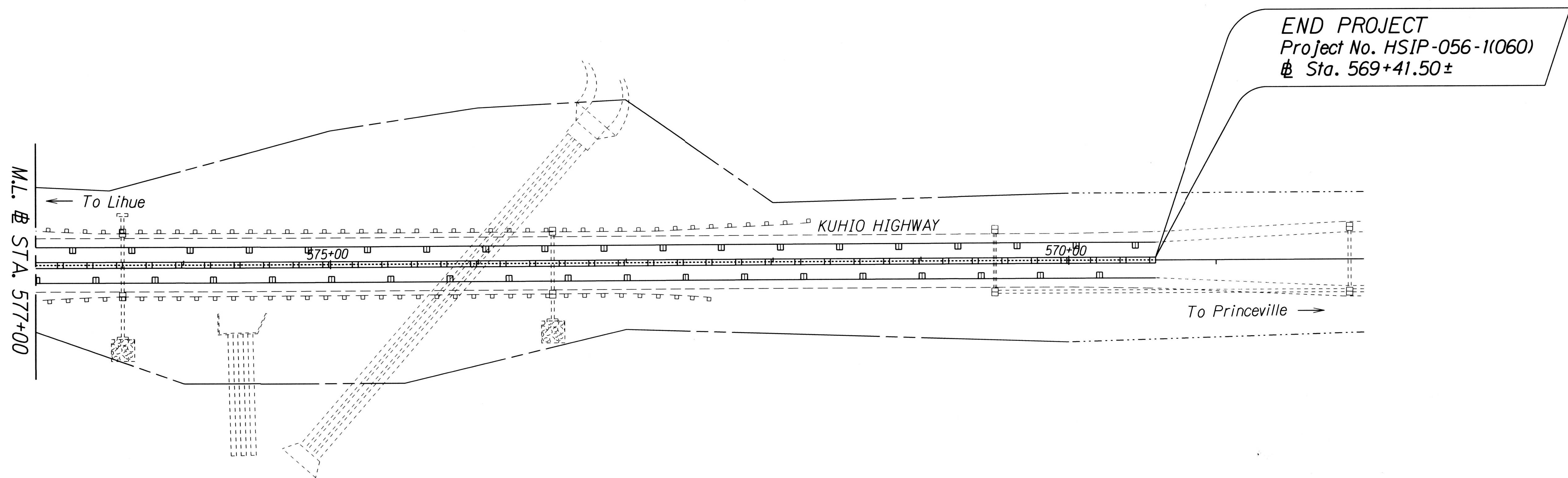
PAVEMENT MARKING
& TRAFFIC SIGNING PLAN

KUHIO HIGHWAY SAFETY IMPROVEMENTS
Wailapa Road to Kapaka Street
Mile Post 21.72 to Mile Post 27.32
Fed-Aid Project No. HSIP-056-1(060)
Scale: 1" = 40' Date: January 2017

SHEET No. T17 OF 18 SHEETS

FED. ROAD DIST. NO.	STATE	FED-AID PROJ. NO.	FISCAL YEAR	SHEET NO.	TOTAL SHEETS
HAWAII	HAW.	HSIP-056-1(060)	2017	25	29

TRUE NORTH
SCALE: 1" = 40'



ORIGINAL PLAN	SURVEY PLOTTED BY	DATE
NOTE BOOK	DRAWN BY	
DESIGNED BY	TRACED BY	
QUANTITIES BY	DESIGNED BY	
CHECKED BY		

STATE OF HAWAII
DEPARTMENT OF TRANSPORTATION
HIGHWAYS DIVISION
PAVEMENT MARKING
TRAFFIC SIGNING PLAN
KUHIO HIGHWAY SAFETY IMPROVEMENTS
Wailapa Road to Kapaka Street
Mile Post 21.72 to Mile Post 27.32
Fed-Aid Project No. HSIP-056-1(060)
Scale: 1" = 40' Date: January 2017
SHEET No. 18 OF 18 SHEETS