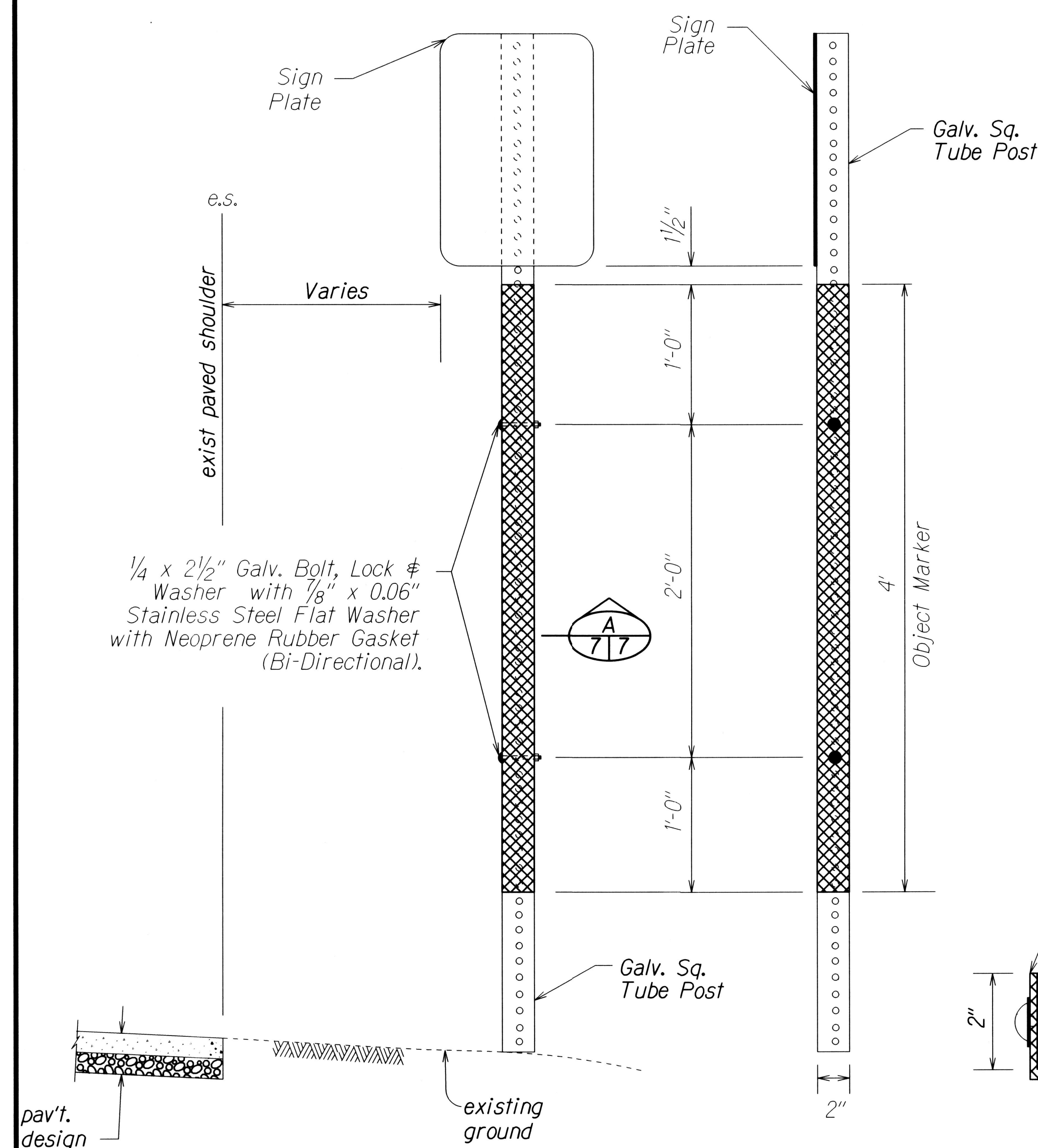
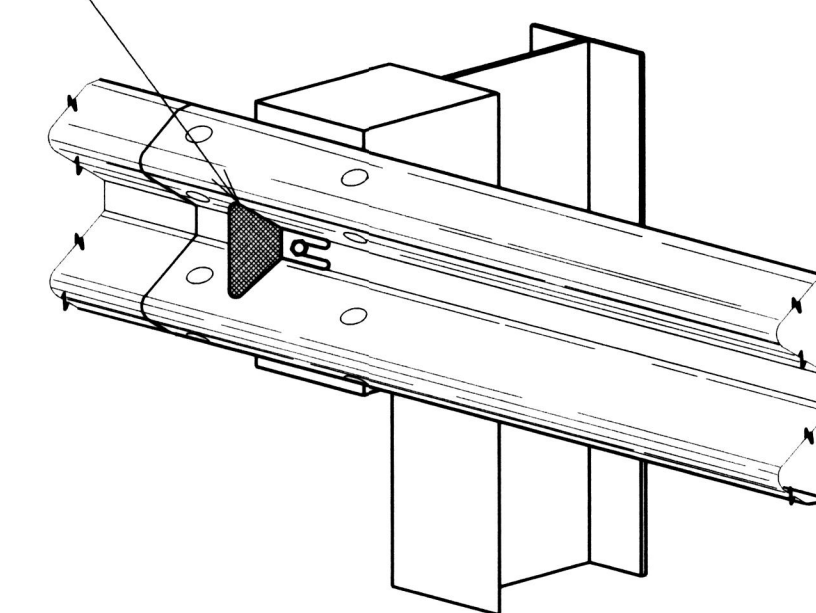


FED. ROAD DIST. NO.	STATE	FED-AID PROJ. NO.	FISCAL YEAR	SHEET NO.	TOTAL SHEETS
HAWAII	HAW.	HSIP-056-1(060)	2017	7	29

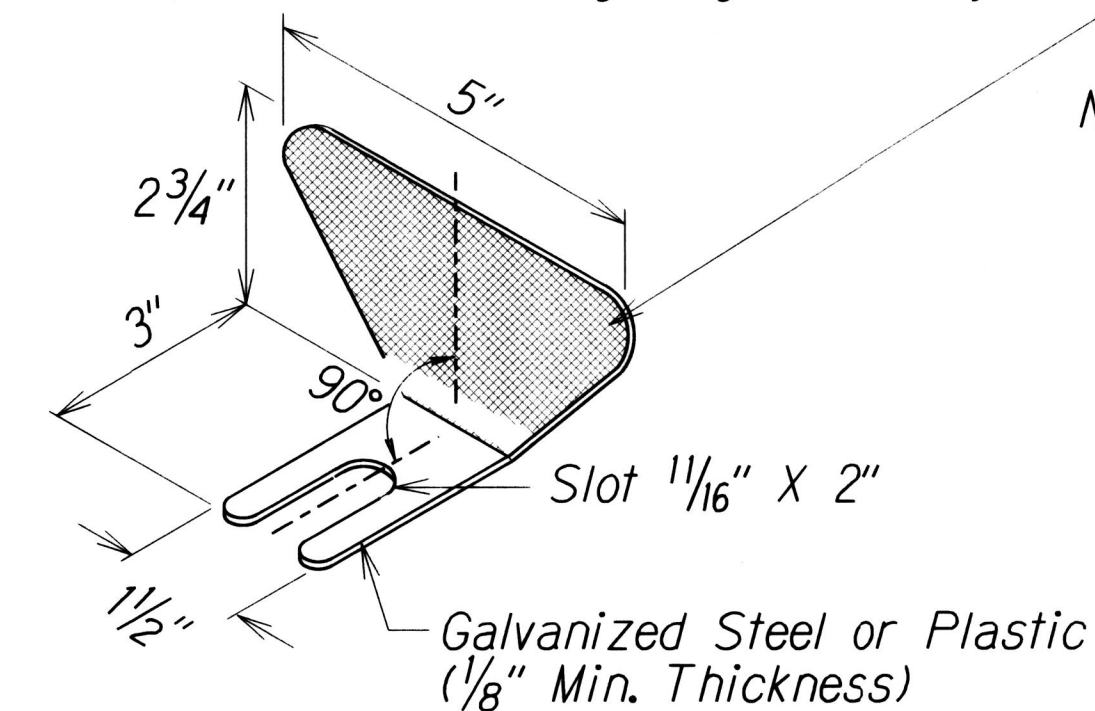


Reflector Marker (RM-5) - Reflector Facing Traffic (Mounted on Guardrail Bolt)



(Refer to Notes **)

Type III or IV Retroreflective Sheeting (High Intensity)

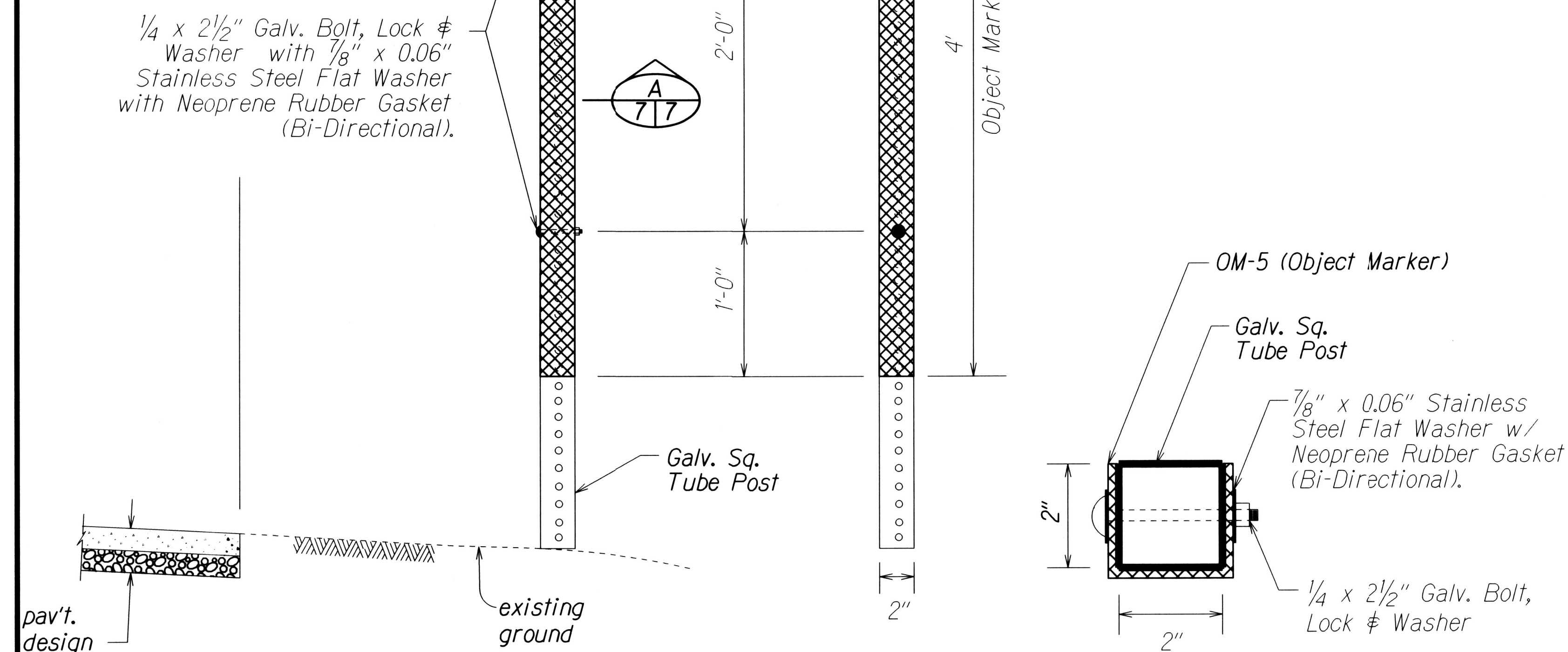


Notes**:

Reflector Marker (RM-5) mounted on guardrails shall be spaced every 25 feet. RM-5's shall not be installed on Terminal Sections. RM-5 shall be either galvanized steel or plastic.

REFLECTOR MARKER (RM-5) DETAIL AND TYPICAL INSTALLATION

Not to Scale



(Refer to Notes *)

FRONT VIEW

SIDE VIEW

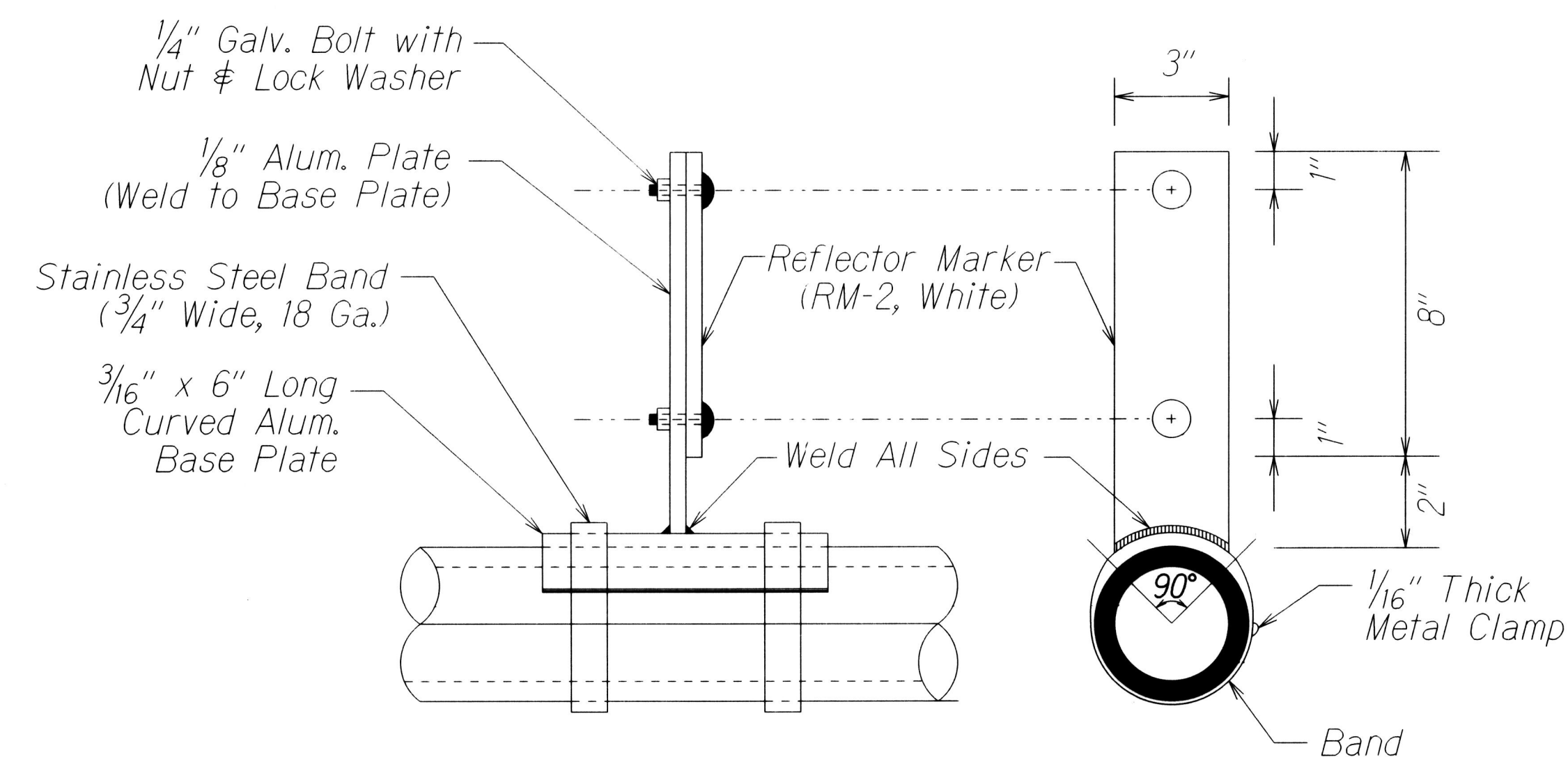
SECTION

OBJECT MARKER (OM-5) DETAIL @ TRAFFIC SIGN POST

Not to Scale

Notes*:

- Object marker shall be Vis-Z-Shield manufactured by ZUMAR or approved equal.
- Background of object marker shall be retroreflectorized with Type XI retroreflective sheeting.
- The color of the object marker retroreflective sheeting shall be red for "STOP" (RI-1) and "YIELD" (RI-2) signs, others shall be yellow retroreflective sheeting.



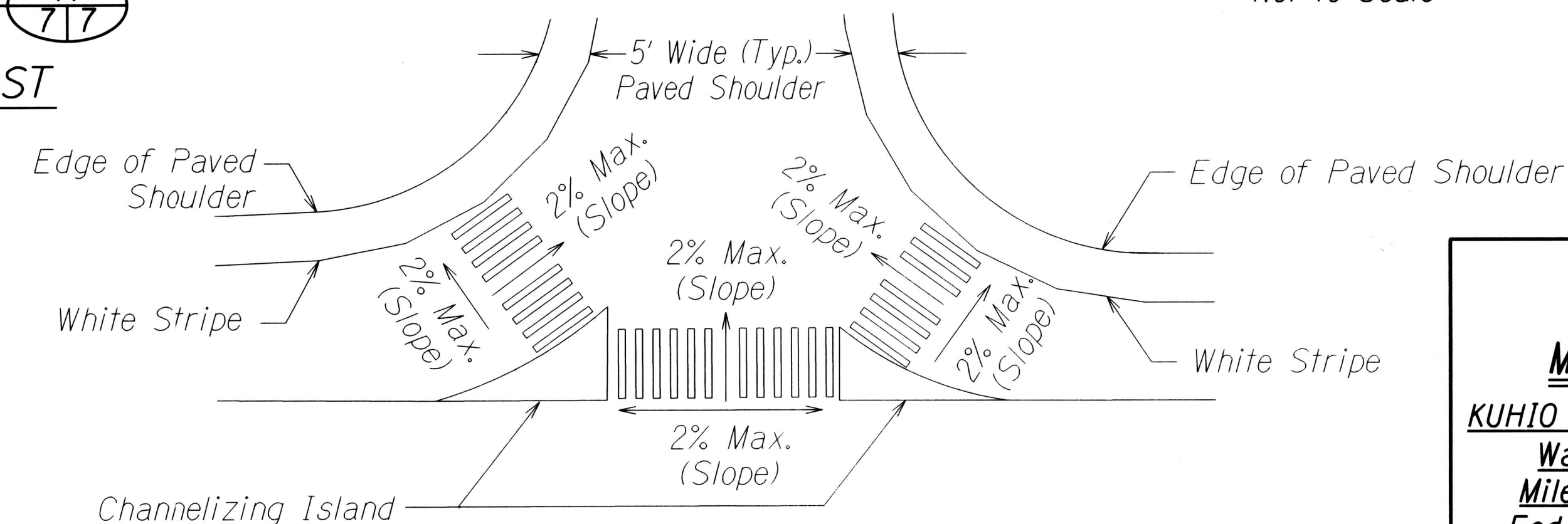
SIDE VIEW

FRONT VIEW

DETAILS OF BRACKETS FOR REFLECTOR MARKERS (RM-2)

MOUNTED ON BRIDGE RAILINGS

Not to Scale



DETAIL AT CROSSWALK

Not to Scale

STATE OF HAWAII DEPARTMENT OF TRANSPORTATION HIGHWAYS DIVISION	
MISCELLANEOUS DETAIL	
KUHIO HIGHWAY SAFETY IMPROVEMENTS	
Wailapa Road to Kapaka Street	
Mile Post 21.72 to Mile Post 27.32	
Fed-Aid Proj. No. HSIP-056-1(060)	
Not to Scale	Date: January 2017
SHEET No. 1 OF 1 SHEETS	