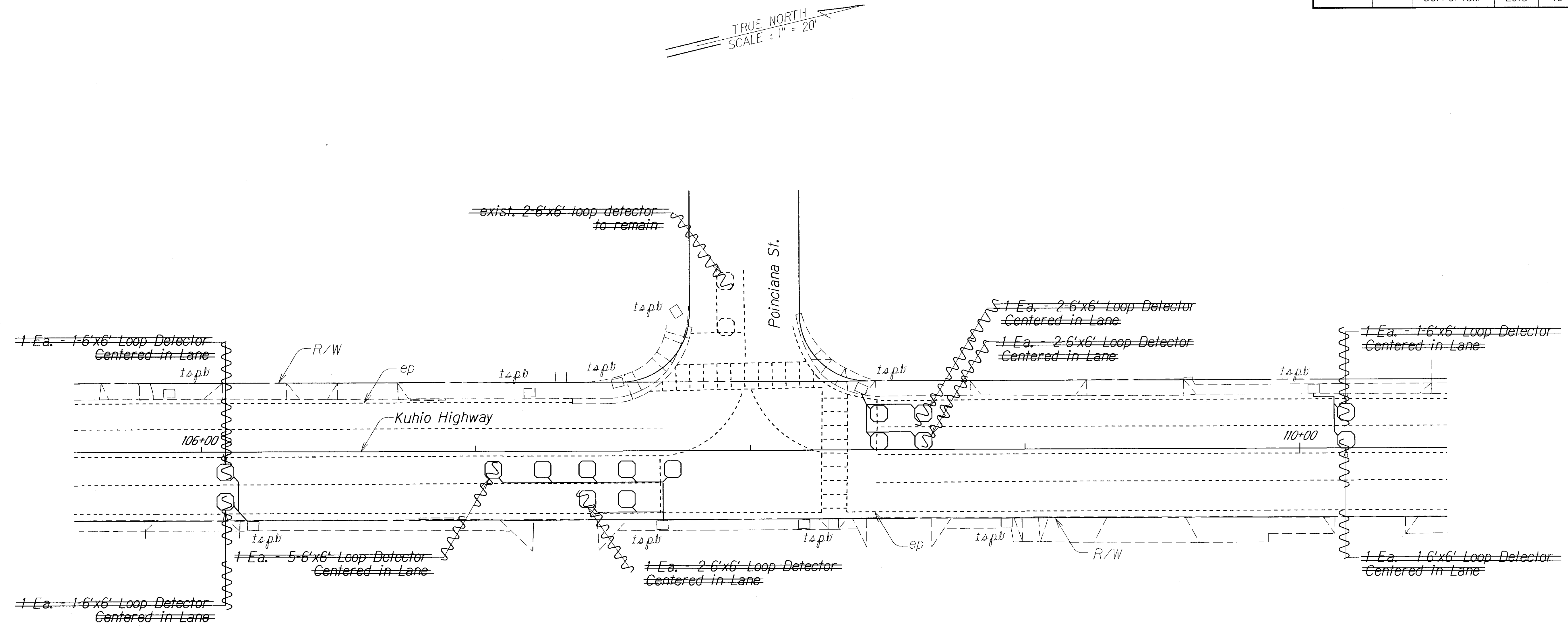


FED. ROAD DIST. NO.	STATE	PROJ. NO.	FISCAL YEAR	SHEET NO.	TOTAL SHEETS
HAWAII	HAW.	56A-01-13M	2013	18	24



KUHIO HIGHWAY/POINCIANA STREET INTERSECTION
Scale: 1"=20'

- Notes:
1. Refer to HDOT Standard Plan TE-34 & TE-35 for loop detector and ducts details and notes.
 2. Install new cable/conduit from sensor loop to traffic signal pullbox. Existing conduit between traffic signal pullbox shall remain.
 3. Traffic signal system at the intersection shall remain operational during the construction and a temporary traffic signal system shall be provided as required to maintain operation. Contractor shall obtain approval from the HDOT for any temporary traffic signal system prior to modifications to the existing traffic signal system.
 4. Loop detectors shall be installed before paving works.

LEGEND FOR AS-BUILT POSTINGS	
	Squiggly line for as-built deletion
	Double line for as-built deletion
Roadway	Text for as-built posting

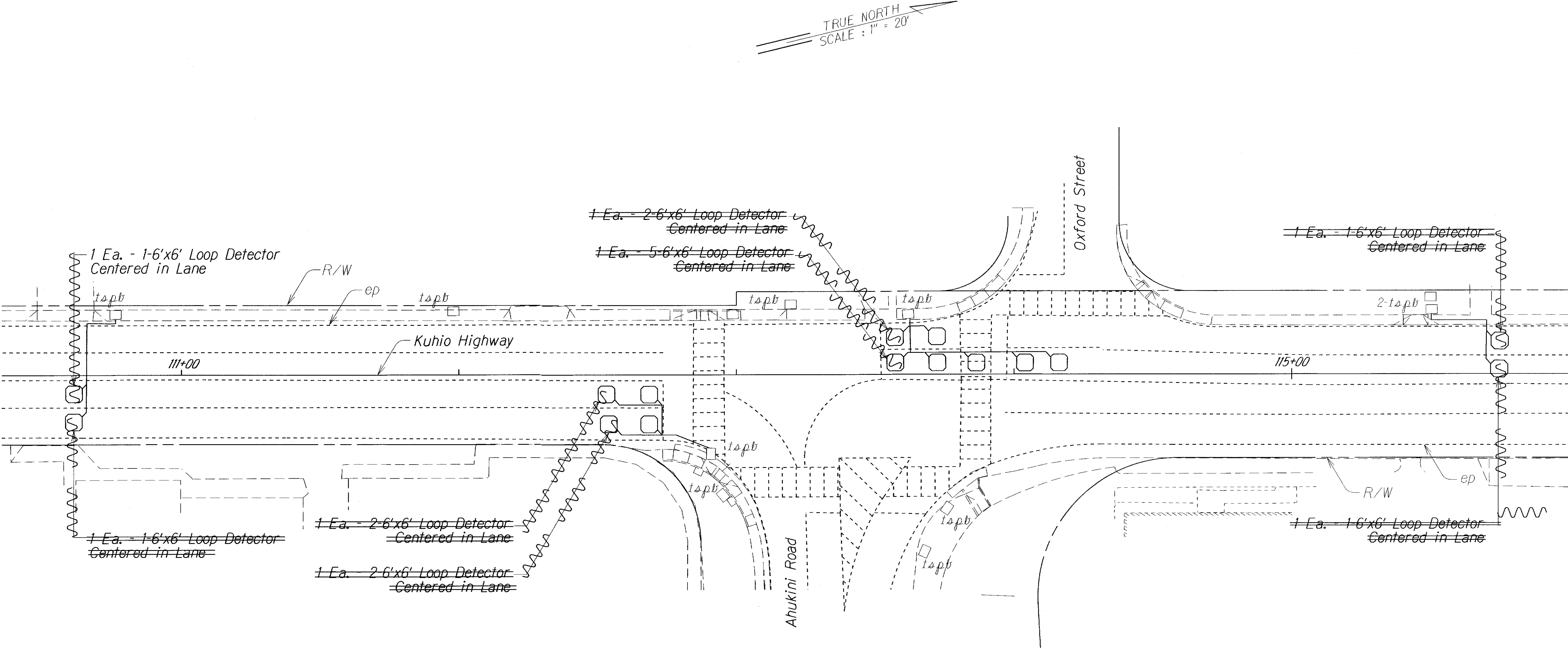
STATE OF HAWAII
DEPARTMENT OF TRANSPORTATION
HIGHWAYS DIVISION

LOOP DETECTOR PLAN

KUHIO HIGHWAY RESURFACING
Hardy Street to Vicinity of Laukini Road
Project No. 56A-01-13M
Scale: 1" = 20' Date: January 2013

ORIGINAL PLAN	DATE
SURVEY PLOTTED BY	
DRAWN BY	
DESIGNED BY	
NOTED BY	
CHECKED BY	

FED. ROAD DIST. NO.	STATE	PROJ. NO.	FISCAL YEAR	SHEET NO.	TOTAL SHEETS
HAWAII	HAW.	56A-01-13M	2013	19	24



KUHIO HIGHWAY/AHUKINI ROAD & OXFORD STREET INTERSECTION
 Scale: 1"=20'

- Notes:
1. Refer to HDOT Standard Plan TE-34 & TE-35 for loop detector and ducts details and notes.
 2. Install new cable/conduit from sensor loop to traffic signal pullbox. Existing conduit between traffic signal pullbox shall remain.
 3. Traffic signal system at the intersection shall remain operational during the construction and a temporary traffic signal system shall be provided as required to maintain operation. Contractor shall obtain approval from the HDOT for any temporary traffic signal system prior to modifications to the existing traffic signal system.
 4. Loop detectors shall be installed before paving works.

LEGEND FOR AS-BUILT POSTINGS	
	Squiggly line for as-built deletion
	Double line for as-built deletion
Roadway	Text for as-built posting

STATE OF HAWAII
DEPARTMENT OF TRANSPORTATION
HIGHWAYS DIVISION

LOOP DETECTOR PLAN

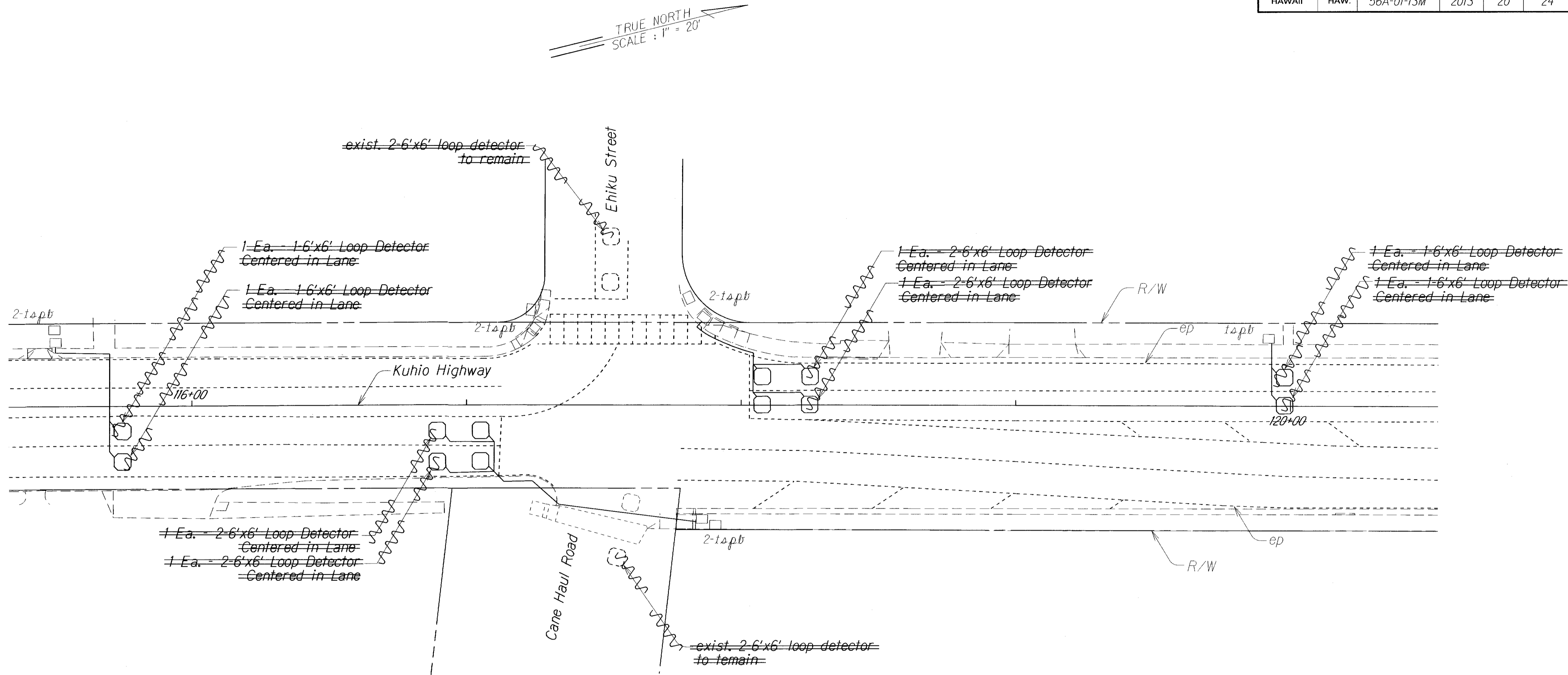
KUHIO HIGHWAY RESURFACING
Hardy Street to Vicinity of Laukini Road
Project No. 56A-01-13M

Scale: 1" = 20' Date: January 2013

SHEET No. 2 OF 5 SHEETS

ORIGINAL PLAN	SURVEY PLOTTED BY	DATE
NOTE BOOK	DRAWN BY	
DESIGNED BY	CHECKED BY	
APPROVED BY		

FED. ROAD DIST. NO.	STATE	PROJ. NO.	FISCAL YEAR	SHEET NO.	TOTAL SHEETS
HAWAII	HAW.	56A-01-13M	2013	20	24



KUHIO HIGHWAY/EHIKU STREET INTERSECTION
Scale: 1"=20'

LEGEND FOR AS-BUILT POSTINGS	
	Squiggly line for as-built deletion
	Double line for as-built deletion
Roadway	Text for as-built posting

- Notes:
1. Refer to HDOT Standard Plan TE-34 & TE-35 for loop detector and ducts details and notes.
 2. Install new cable/conduit from sensor loop to traffic signal pullbox. Existing conduit between traffic signal pullbox shall remain.
 3. Traffic signal system at the intersection shall remain operational during the construction and a temporary traffic signal system shall be provided as required to maintain operation. Contractor shall obtain approval from the HDOT for any temporary traffic signal system prior to modifications to the existing traffic signal system.
 4. Loop detectors shall be installed before paving works.

STATE OF HAWAII
DEPARTMENT OF TRANSPORTATION
HIGHWAYS DIVISION

LOOP DETECTOR PLAN

KUHIO HIGHWAY RESURFACING
Hardy Street to Vicinity of Laukini Road
Project No. 56A-01-13M

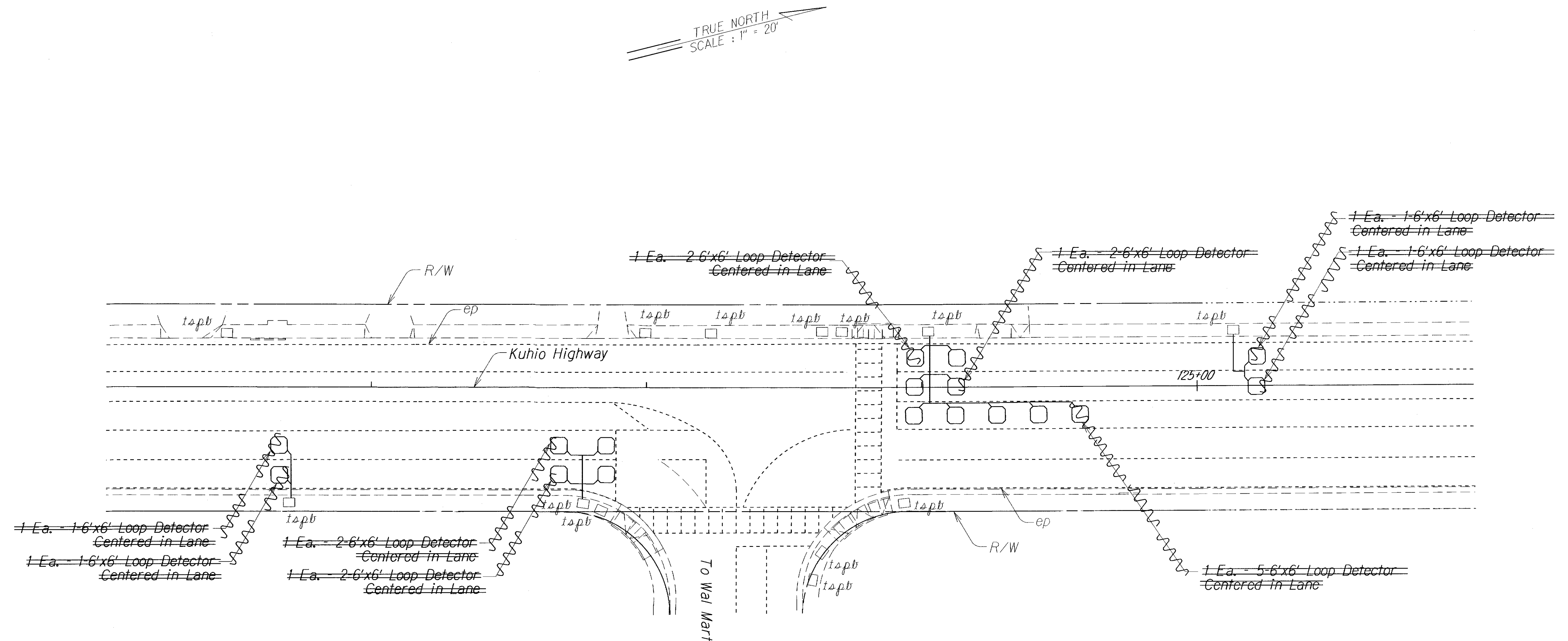
Scale: 1" = 20' Date: January 2013

SHEET No. 3 OF 5 SHEETS

ORIGINAL PLAN	SURVEY PLOTTED BY	DATE
NOTE BOOK	DRAWN BY	
DESIGNED BY	CHECKED BY	
DATE		

"AS-BUILT"

FED. ROAD DIST. NO.	STATE	PROJ. NO.	FISCAL YEAR	SHEET NO.	TOTAL SHEETS
HAWAII	HAW.	56A-01-13M	2013	21	24



KUHIO HIGHWAY/WALMART INTERSECTION
Scale: 1"=20'

Notes:

1. Refer to HDOT Standard Plan TE-34 & TE-35 for loop detector and ducts details and notes.
2. Install new cable/conduit from sensor loop to traffic signal pullbox. Existing conduit between traffic signal pullbox shall remain.
3. Traffic signal system at the intersection shall remain operational during the construction and a temporary traffic signal system shall be provided as required to maintain operation. Contractor shall obtain approval from the HDOT for any temporary traffic signal system prior to modifications to the existing traffic signal system.
4. Loop detectors shall be installed before paving works.

**LEGEND FOR
AS-BUILT POSTINGS**

	Squiggly line for as-built deletion
	Double line for as-built deletion
Roadway	Text for as-built posting

STATE OF HAWAII
DEPARTMENT OF TRANSPORTATION
HIGHWAYS DIVISION

LOOP DETECTOR PLAN

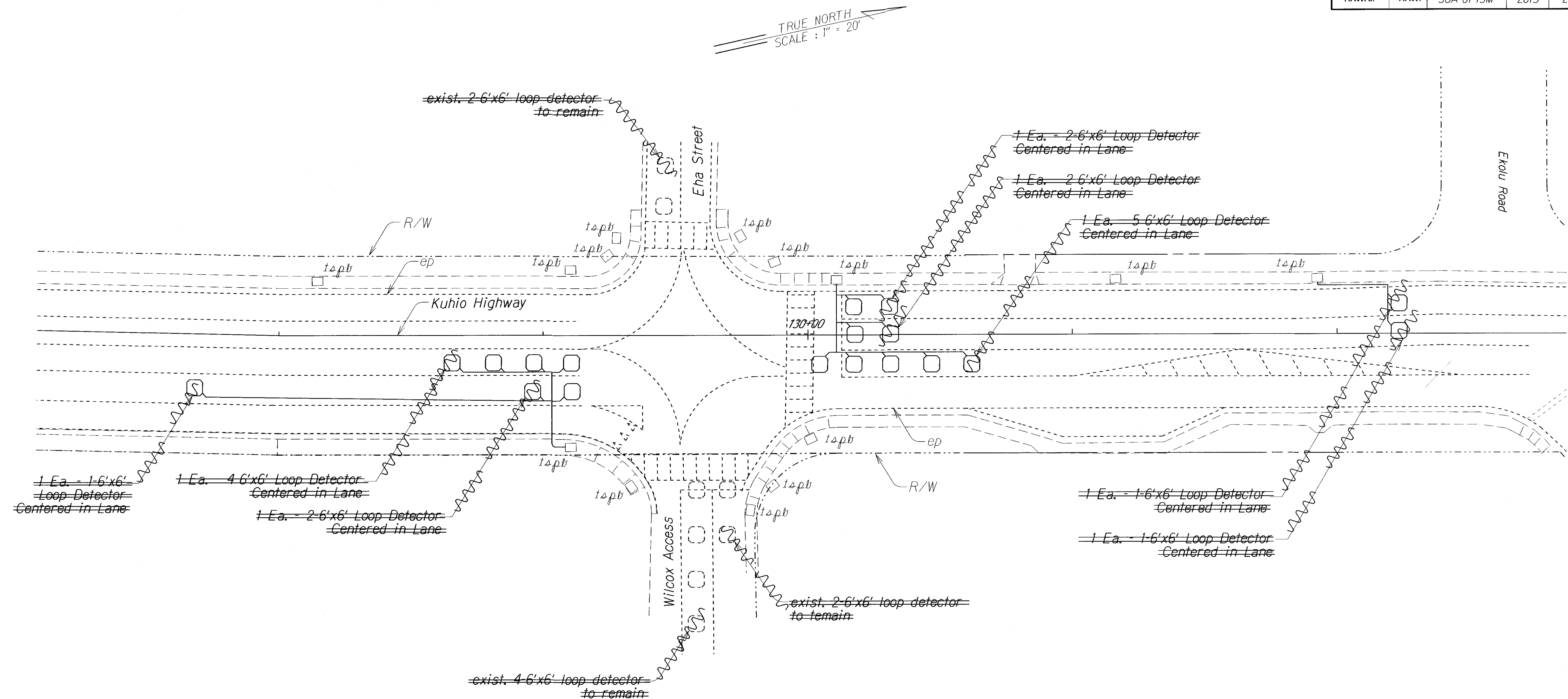
KUHIO HIGHWAY RESURFACING
Hardy Street to Vicinity of Laukini Road
Project No. 56A-01-13M

Scale: 1" = 20' Date: January 2013

SHEET No. 4 OF 5 SHEETS

"AS-BUILT"

FED. ROAD DIST. NO.	STATE	PROJ. NO.	FISCAL YEAR	SHEET NO.	TOTAL SHEETS
HAWAII	HAW.	56A-01-13M	2013	22	24



KUHIO HIGHWAY/EHA STREET INTERSECTION
Scale: 1"=20'

Notes:

1. Refer to HDOT Standard Plan TE-34 & TE-35 for loop detector and ducts details and notes.
2. Install new cable/conduit from sensor loop to traffic signal pullbox. Existing conduit between traffic signal pullbox shall remain.
3. Traffic signal system at the intersection shall remain operational during the construction and a temporary traffic signal system shall be provided as required to maintain operation. Contractor shall obtain approval from the HDOT for any temporary traffic signal system prior to modifications to the existing traffic signal system.
4. Loop detectors limits shall be installed before paving works.

LEGEND FOR AS-BUILT POSTINGS	
	Squiggly line for as-built deletion
	Double line for as-built deletion
Roadway	Text for as-built posting

STATE OF HAWAII
DEPARTMENT OF TRANSPORTATION
HIGHWAYS DIVISION

LOOP DETECTOR PLAN

KUHIO HIGHWAY RESURFACING
Hardy Street to Vicinity of Laukini Road
Project No. 56A-01-13M

Scale: 1" = 20' Date: January 2013

SHEET No. 5 OF 5 SHEETS

"AS-BUILT"